

Account Key:  [Open New Account](#)

Ledger Account:  [Acct Detail](#)

Transaction Status:  [Save](#)

Managed Currency: 

LOCAL	
Current Month	0.00
Balance YTD	0.00

Physical Resource: 

Phys Current	0.00
Phys YTD	0.00
KPI Type	
Kpi Current	0.00
Kpi YTD	0.00

InclExp or BalSheet:

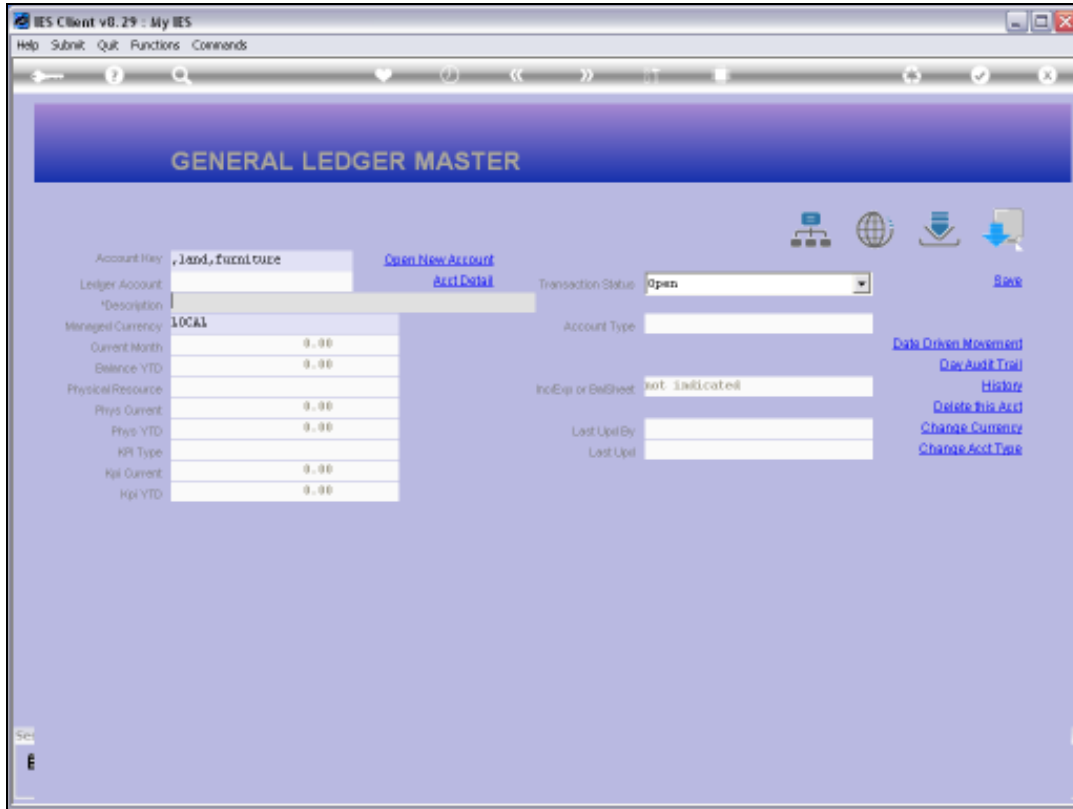
Last Upd By:

Last Upd:

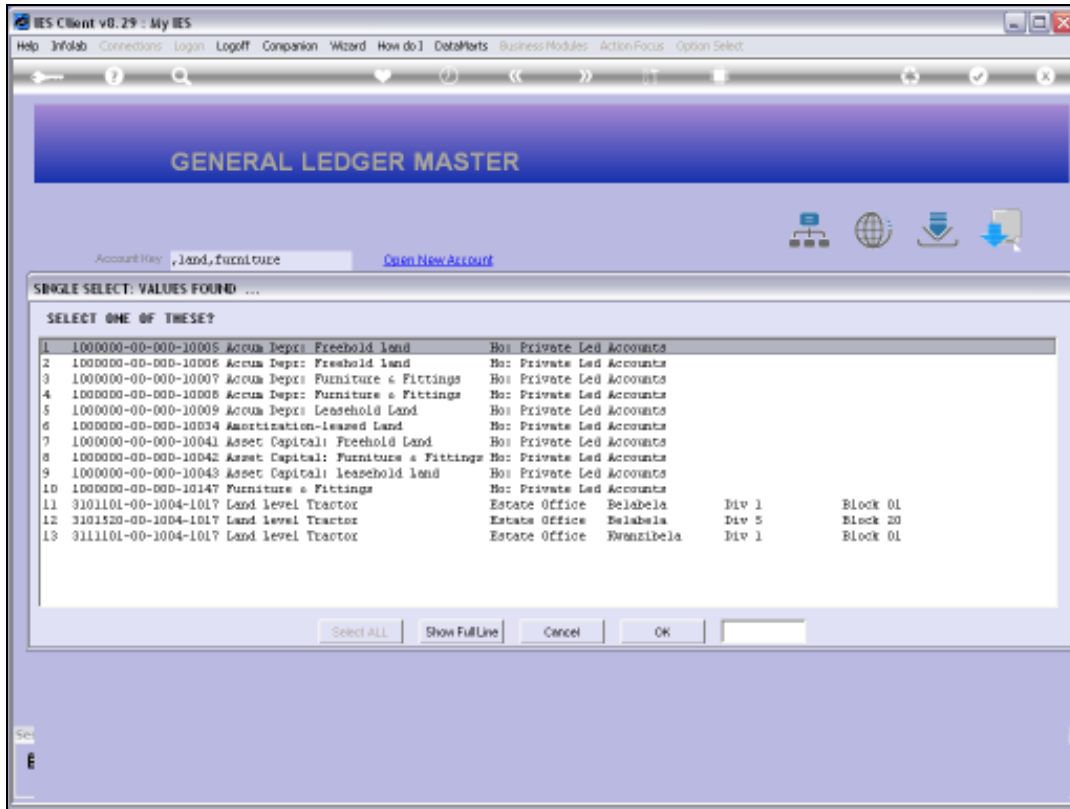
[Data Driven Movement](#)  
[Get Aud & Trail](#)  
[History](#)  
[Delete this Acct](#)  
[Change Currency](#)  
[Change Acct Type](#)

### Slide 1

Slide notes: The intuitive lookup also supports an 'OR' scenario. For example, by starting with a comma, we can add more words or strings separated by comma. That means that if any of these strings are found in the Account Name then it qualifies.

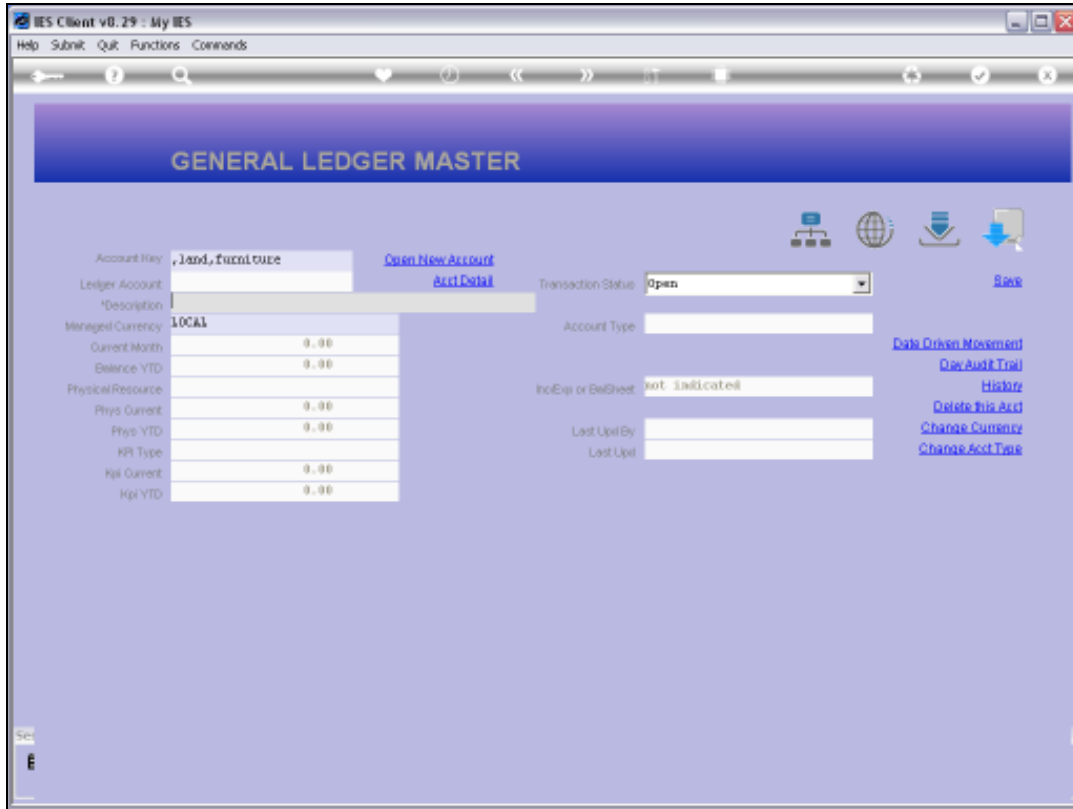


Slide 2  
Slide notes:

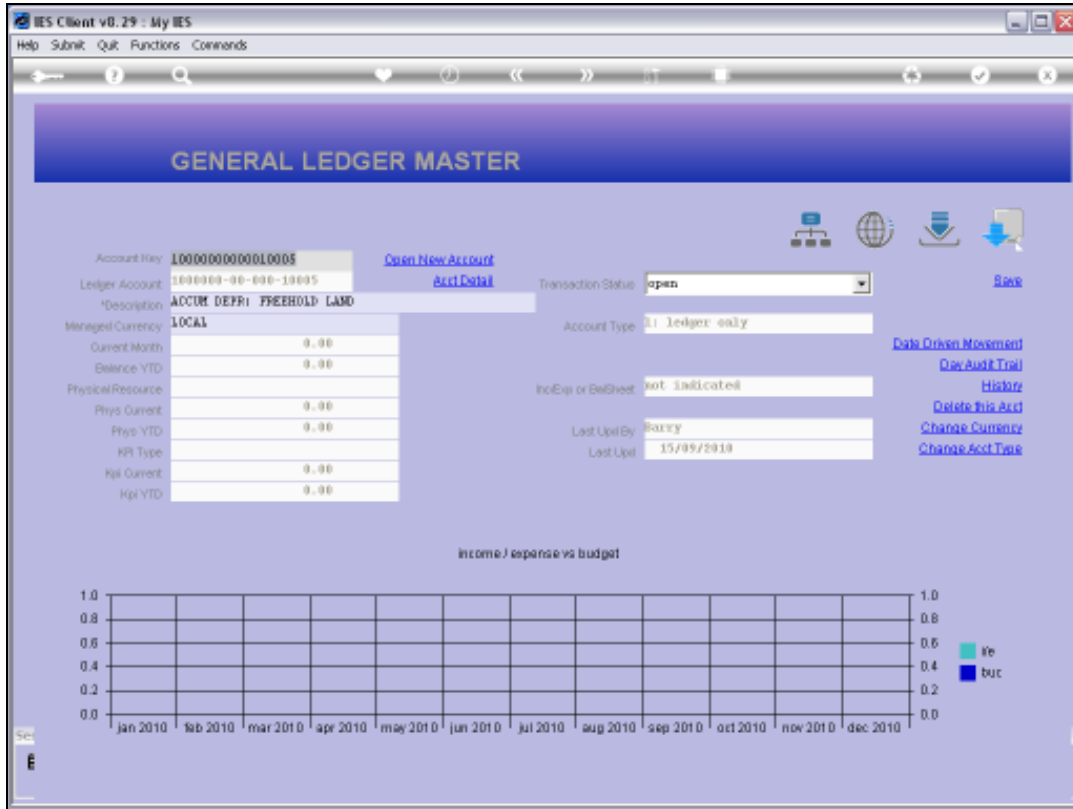


Slide 3

Slide notes: So all of these Accounts will include at least 'land' or 'furniture'.



Slide 4  
Slide notes:



Slide 5

Slide notes: Now we add another string, and the list may be longer, because if any Account includes 'other' then it now qualifies.

**GENERAL LEDGER MASTER**

Account Key: land, furn, other [Open New Account](#)

Ledger Account: 100000-00-00-1005 [Acct Detail](#) Transaction Status: open [Save](#)

Description: ACCUM DEPR: FREEHOLD LAND

Managed Currency: LOCAL Account Type: 31 ledger only [Data Origin Movement](#)

Current Month: 0.00 [Doc Audit Trail](#)

Balance YTD: 0.00 [History](#)

Physical Resource: Inc/Exp or BalSheet: not indicated [Delete This Acct](#)

Phys Current: 0.00 [Change Currency](#)

Phys YTD: 0.00 [Change Acct Type](#)

HR Type: Last Upd By: Barry

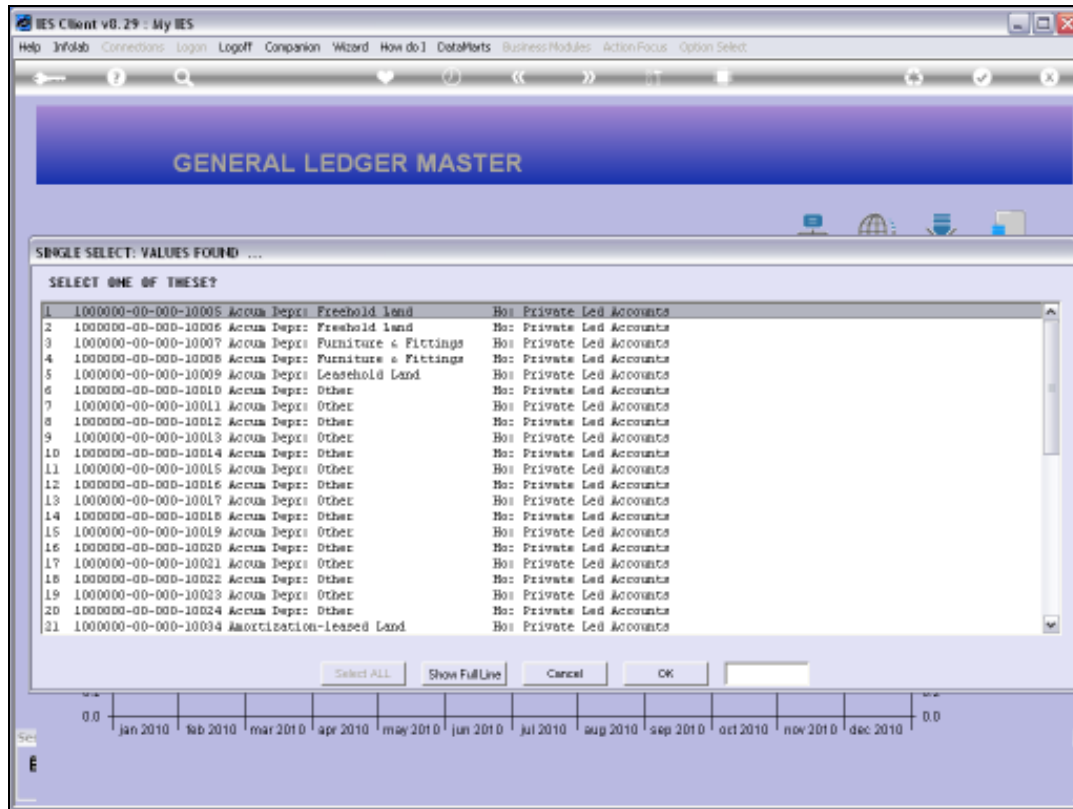
HR Current: 0.00 Last Upd: 15/09/2010

HR YTD: 0.00

income / expense vs budget

Month	inc	exp
Jan 2010		
Feb 2010		
Mar 2010		
Apr 2010		
May 2010		
Jun 2010		
Jul 2010		
Aug 2010		
Sep 2010		
Oct 2010		
Nov 2010		
Dec 2010		

Slide 6  
Slide notes:



Slide 7

Slide notes: And indeed we have a longer result list, with various Account Names that include the word 'other'.

**GENERAL LEDGER MASTER**

Account Key: land, furn, other [Open New Account](#)

Ledger Account: 100000-00-00-1005 [Acct Detail](#) Transaction Status: open [Save](#)

Description: ACCUM DEPR: FREEHOLD LAND

Managed Currency: LOCAL Account Type: 31 ledger only [Data Origin Movement](#)

Current Month	0.00
Balance YTD	0.00
Physical Resource	
Phys Current	0.00
Phys YTD	0.00
HR Type	
Hpl Current	0.00
Hpl YTD	0.00

Inc/Exp or BalSheet: not indicated [Doc Audit Trail](#)

Last Upd By: Barry [History](#)

Last Upd: 15/09/2010 [Delete This Acct](#)

[Change Currency](#)

[Change Acct Type](#)

income / expense vs budget

Month	inc	exp	budget
Jan 2010			
Feb 2010			
Mar 2010			
Apr 2010			
May 2010			
Jun 2010			
Jul 2010			
Aug 2010			
Sep 2010			
Oct 2010			
Nov 2010			
Dec 2010			

Slide 8  
Slide notes:



**GENERAL LEDGER MASTER**

Account Key: 1000000000010147 [Open New Account](#)

Ledger Account: 100000-00-000-10147 [Acct Detail](#) Transaction Status: open [Save](#)

Description: FURNITURE & FIXTURES

Managed Currency: LOCAL Account Type: 01 ledger only [Data Origin Movement](#)

Current Month	0.00
Balance YTD	0.00
Physical Resource	
Phys Current	0.00
Phys YTD	0.00
HR Type	
Hpl Current	0.00
Hpl YTD	0.00

Inc/Exp or BalSheet: not indicated [Doc Audit Trail](#)

Last Upd By: Barry [History](#)

Last Upd: 15/09/2010 [Delete This Acct](#)

[Change Currency](#)

[Change Acct Type](#)

income / expense vs budget

1.0												1.0	
0.8												0.8	
0.6												0.6	
0.4												0.4	
0.2												0.2	
0.0												0.0	
	Jan 2010	Feb 2010	Mar 2010	Apr 2010	May 2010	Jun 2010	Jul 2010	Aug 2010	Sep 2010	Oct 2010	Nov 2010	Dec 2010	

Legend: ■ inc ■ exp

Slide 9  
Slide notes: