

IES Client v0.29 - My IES

Help Submit Quit Functions Comments

GENERAL LEDGER MASTER

Account Key: [Open New Account](#)

Ledger Account: [Acct Detail](#)

Description:

Managed Currency: LOCAL

Current Month: 0.00

Balance YTD: 0.00

Physical Resource:

Phys Current: 0.00

Phys YTD: 0.00

KPI Type:

Kpi Current: 0.00

Kpi YTD: 0.00

Transaction Status: Open

Account Type:

IncExp or BalSheet: not indicated

Last Upd By:

Last Upd:

[Save](#)

[Data Driven Movement](#)

[Get Audit Trail](#)

[History](#)

[Delete this Acct](#)

[Change Currency](#)

[Change Acct Type](#)

income / expense vs budget

1.0
0.8
0.6
0.4
0.2
0.0

Jan 2010 Feb 2010 Mar 2010 Apr 2010 May 2010 Jun 2010 Jul 2010 Aug 2010 Sep 2010 Oct 2010 Nov 2010 Dec 2010

re
bud

Slide 1

Slide notes: The Account Code lookup supports the method for 'Account Code Includes'. In this case, we put the 'include' string within slashes.

Account Key /1004/ [Open New Account](#)

Ledger Account [Acct Detail](#) Transaction Status [Save](#)

Managed Currency LOCAL Account Type

Current Month	0.00
Balance YTD	0.00

Physical Resource

Phys Current	0.00
Phys YTD	0.00

Hpl Type

Hpl Current	0.00
Hpl YTD	0.00

Inc/Exp or BalSheet

Last Upd By

Last Upd

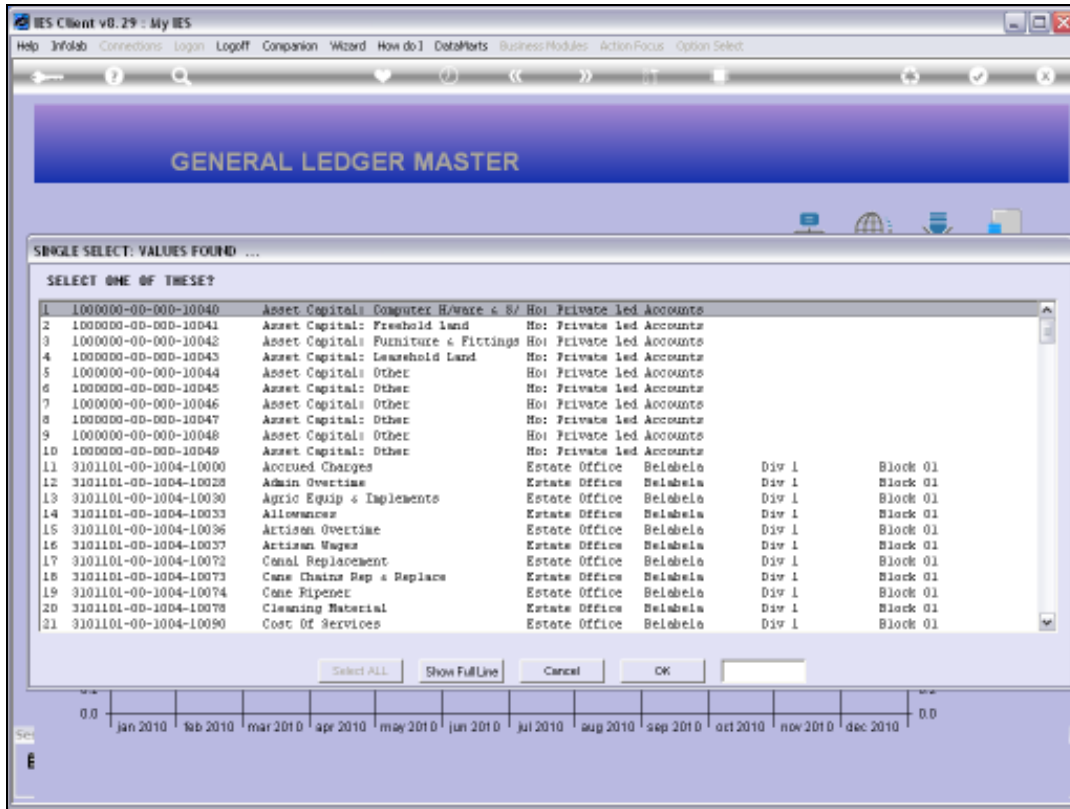
[Data Origin Movement](#)
[Doc Audit Trail](#)
[History](#)
[Delete This Acct](#)
[Change Currency](#)
[Change Acct Type](#)

income / expense vs budget

1.0													1.0
0.8													0.8
0.6													0.6
0.4													0.4
0.2													0.2
0.0													0.0
	Jan 2010	Feb 2010	Mar 2010	Apr 2010	May 2010	Jun 2010	Jul 2010	Aug 2010	Sep 2010	Oct 2010	Nov 2010	Dec 2010	

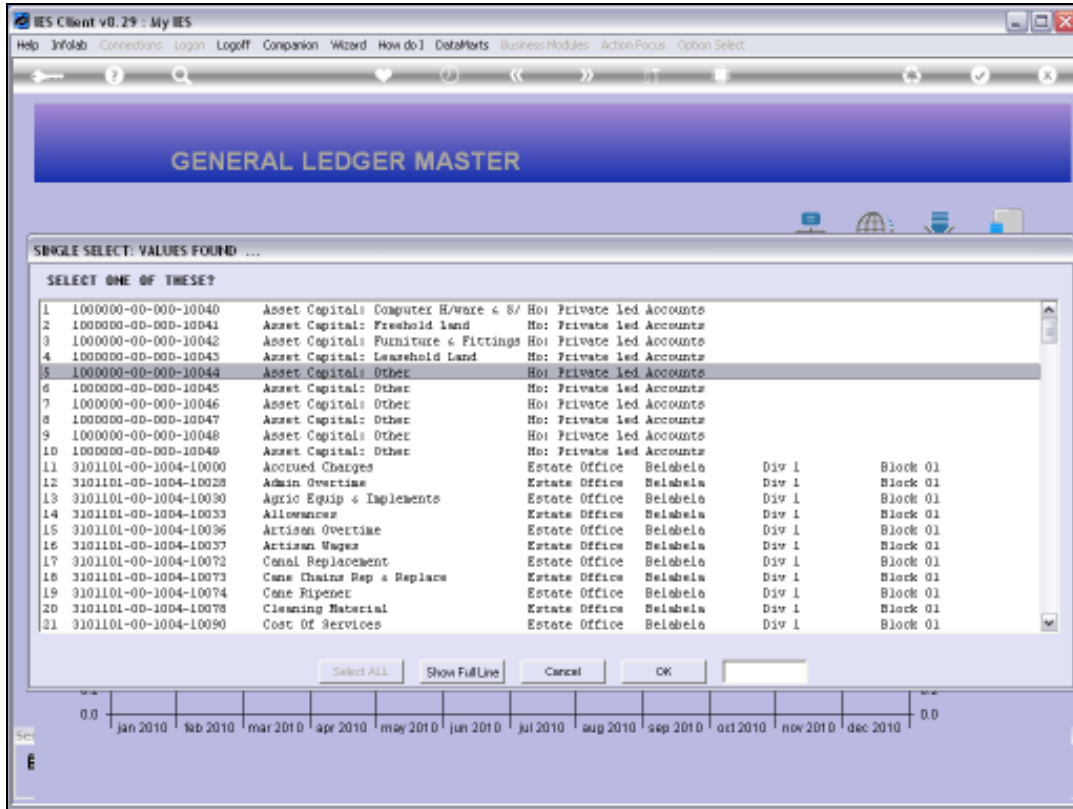
inc
buc

Slide 2
Slide notes:

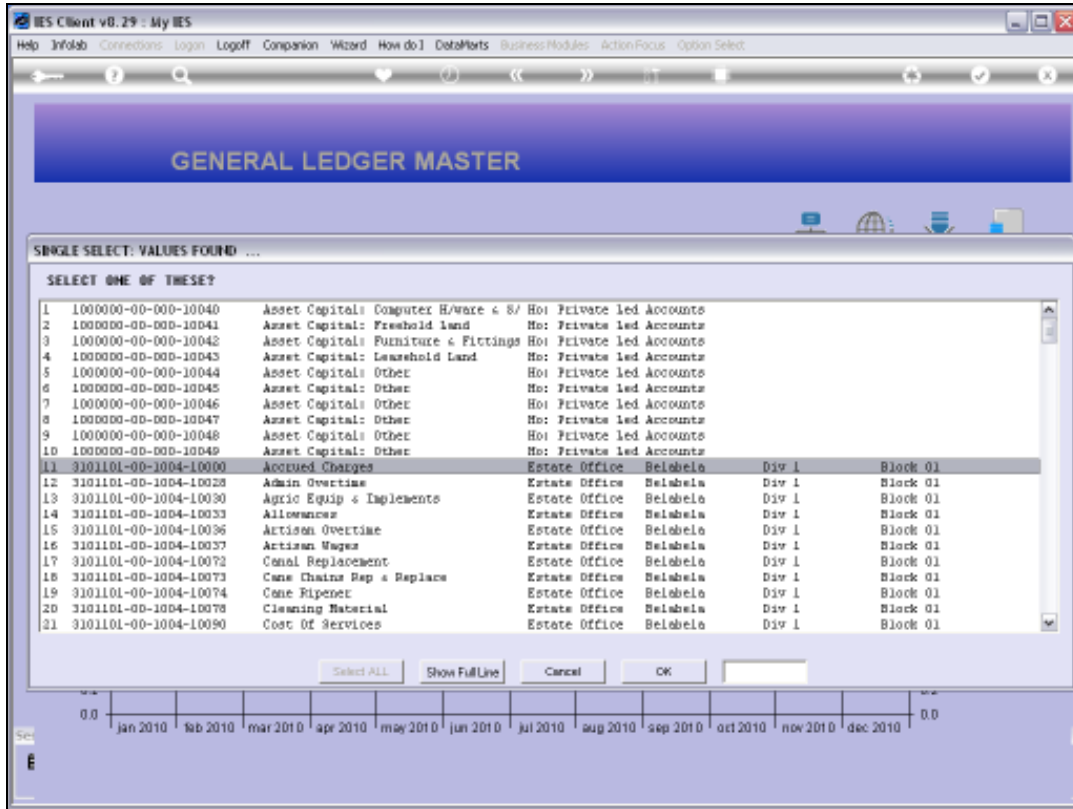


Slide 3

Slide notes: All of these Account Codes include '1004' somewhere in the Code.



Slide 4
Slide notes:



Slide 5
Slide notes:

Slide 6
Slide notes:

GENERAL LEDGER MASTER

Account Key: 310110100100410000 [Open New Account](#)
Ledger Account: 1191101-99-1000-10000 [Acct Detail](#) Transaction Status: open [Save](#)
Description: ACCRUED CHARGES
Managed Currency: LOCAL Account Type: 31 ledger only [Data Origin Movement](#)
Current Month: 0.00 [Doc Audit Trail](#)
Balance YTD: 0.00 [History](#)
Physical Resource: Inc/Esp or BalSheet: not indicated [Delete This Acct](#)
Phys Current: 0.00 [Change Currency](#)
Phys YTD: 0.00 [Change Acct Type](#)
Hpl Type: Last Upd By: Barry
Hpl Current: 0.00 Last Upd: 11/09/2010

income / expense vs budget

Month	Actual	Budget
Jan 2010		
Feb 2010		
Mar 2010		
Apr 2010		
May 2010		
Jun 2010		
Jul 2010		
Aug 2010		
Sep 2010		
Oct 2010		
Nov 2010		
Dec 2010		

Slide 7
Slide notes: