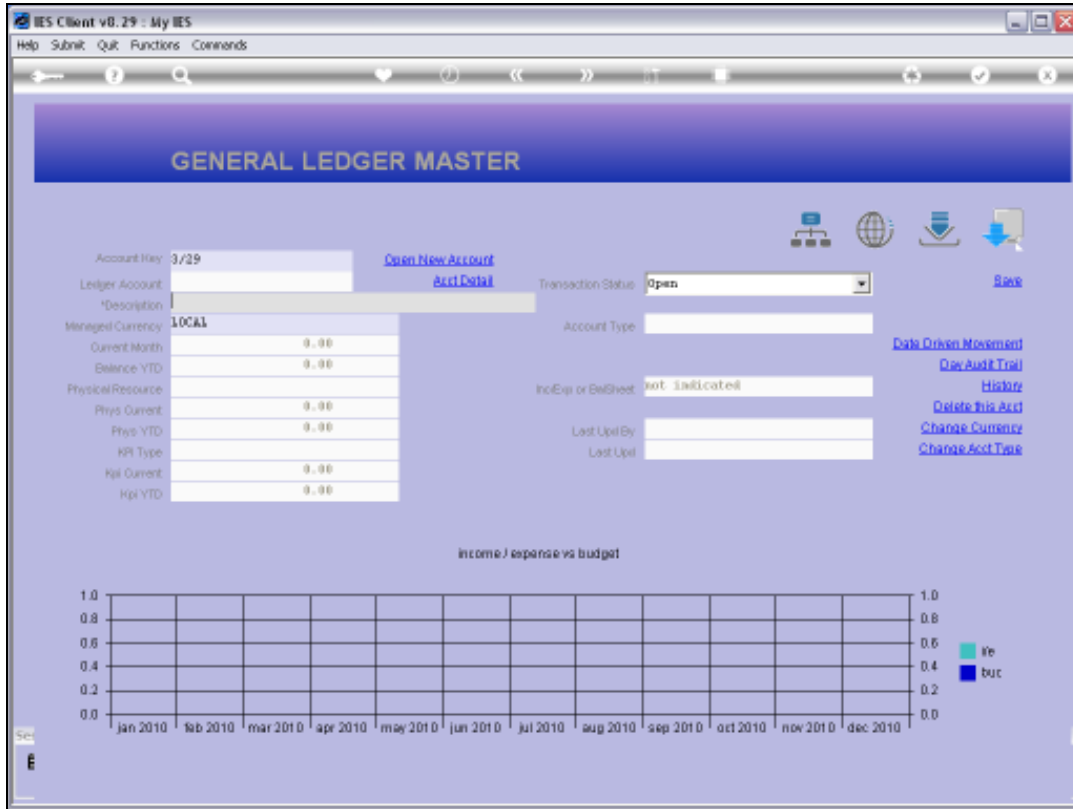


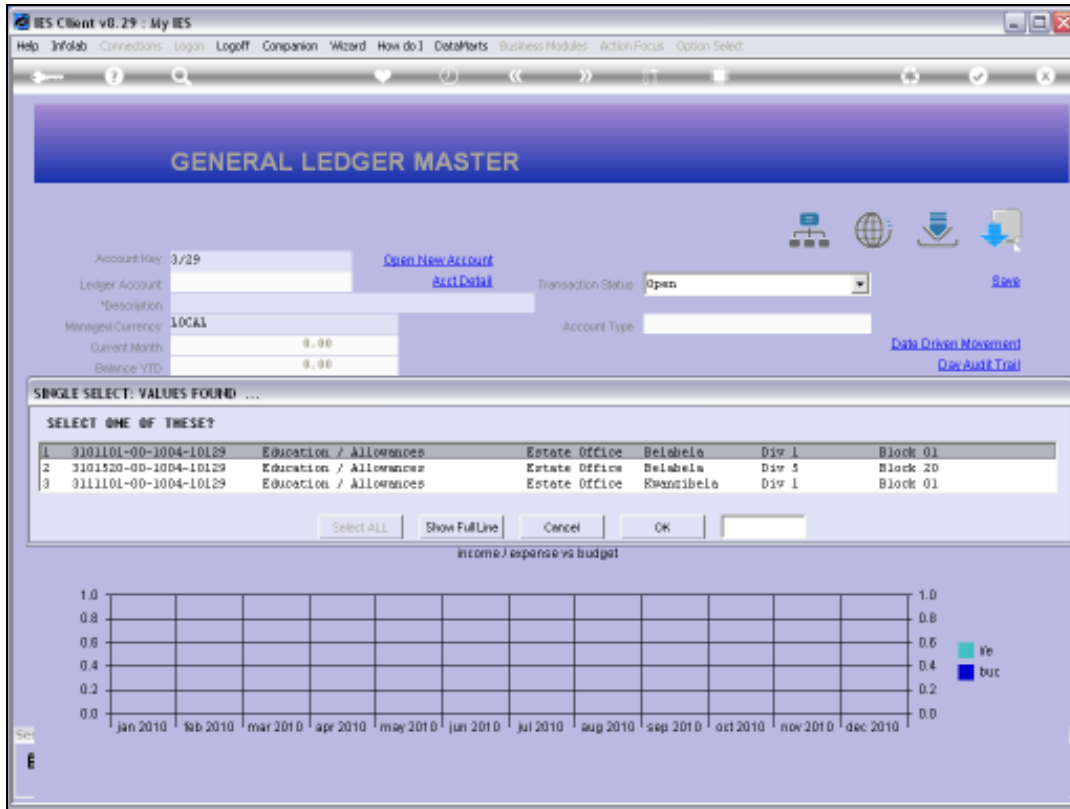


## Slide 1

Slide notes: The Account Code lookup supports the method for 'Starts With and Ends With'. In this case, we just separate 'start with' and 'end with' using the slash.

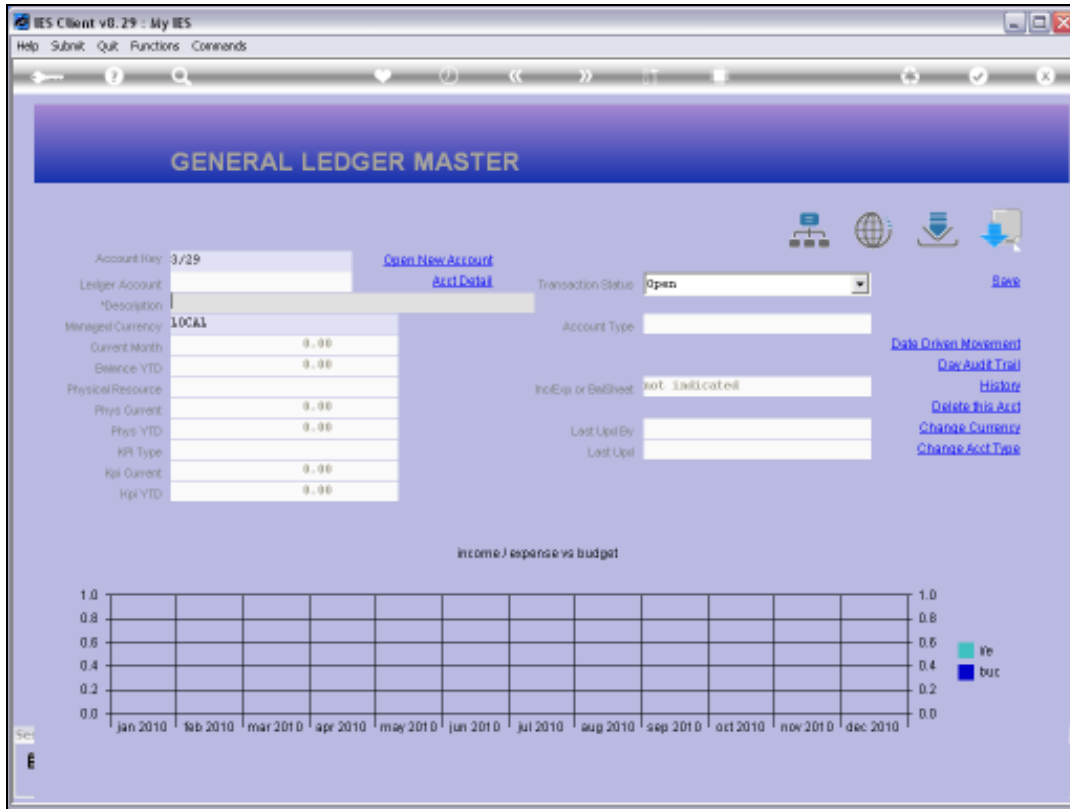


Slide 2  
Slide notes:



Slide 3

Slide notes: So these Account Codes will all start with '3' and end with '29'.



Slide 4  
Slide notes:

**GENERAL LEDGER MASTER**

Account Key: 310110100100410129 [Open New Account](#)  
Ledger Account: 1191101-00-1000-10129 [Acct Detail](#) Transaction Status: open [Save](#)  
Description: EDUCATION / ALLOWANCES  
Managed Currency: LOCAL Account Type: 31 ledger only [Data Origin Movement](#)  
Current Month: 0.00 Inc/Exp or BalSheet: not indicated [Doc Audit Trail](#)  
Balance YTD: 0.00 Last Upd By: Barry [History](#)  
Physical Resource: Last Upd: 11/09/2010 [Delete This Acct](#)  
Phys Current: 0.00 [Change Currency](#)  
Phys YTD: 0.00 [Change Acct Type](#)  
HR Type:  
Hpl Current: 0.00  
Hpl YTD: 0.00

income / expense vs budget

Month	inc	exp	bud
Jan 2010			
Feb 2010			
Mar 2010			
Apr 2010			
May 2010			
Jun 2010			
Jul 2010			
Aug 2010			
Sep 2010			
Oct 2010			
Nov 2010			
Dec 2010			

Slide 5  
Slide notes: