



Slide 1

Slide notes: The Chart lookup method is activated with a question mark. This method is based on the Chart Structure, and we start by selecting a Cost Centre.

Account Key: [dropdown] [Open New Account](#)

Ledger Account: [dropdown] [Acct Detail](#) Transaction Status: [Save](#)

Managed Currency: LOCAL Account Type: [dropdown]

Current Month: 0.00 [Data Drive Movement](#)

Balance YTD: 0.00 [Doc Audit Trail](#)

Physical Resource: 0.00 [History](#)

Phys Current: 0.00 [Delete This Acct](#)

Phys YTD: 0.00 [Change Currency](#)

Hpl Type: [dropdown] [Change Acct Type](#)

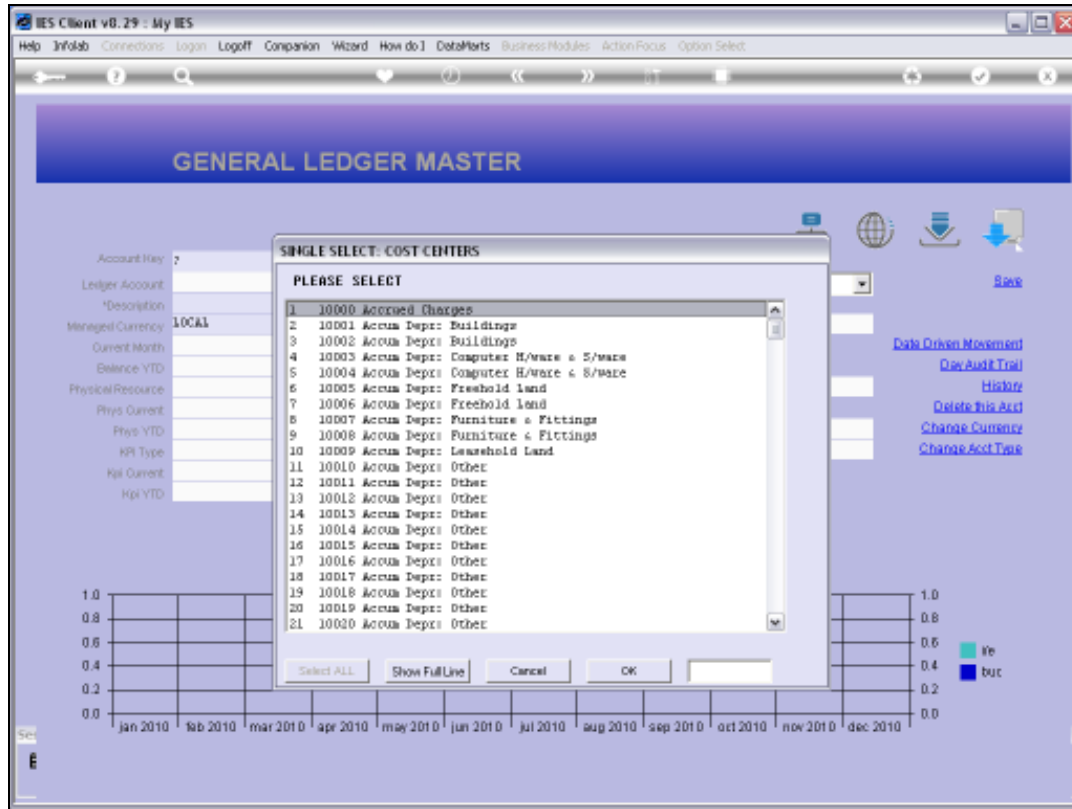
Hpl Current: 0.00

Hpl YTD: 0.00

Income / expense vs budget

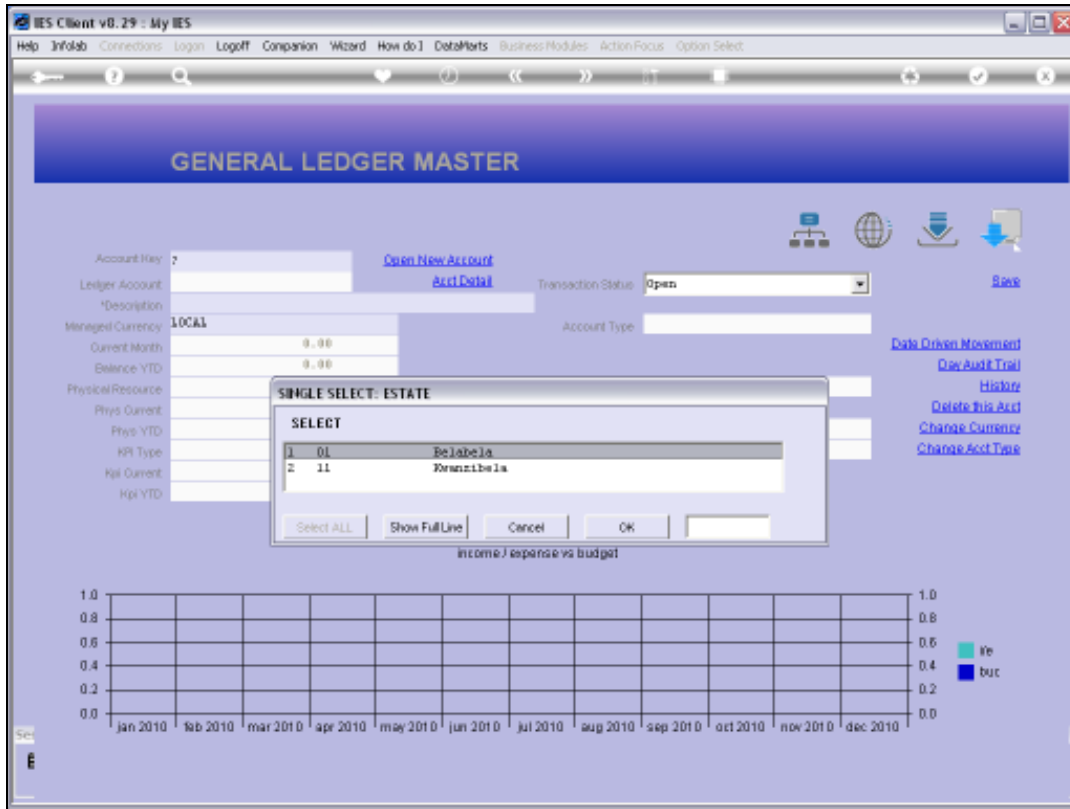
Month	inc	exp
Jan 2010		
Feb 2010		
Mar 2010		
Apr 2010		
May 2010		
Jun 2010		
Jul 2010		
Aug 2010		
Sep 2010		
Oct 2010		
Nov 2010		
Dec 2010		

Slide 2
Slide notes:



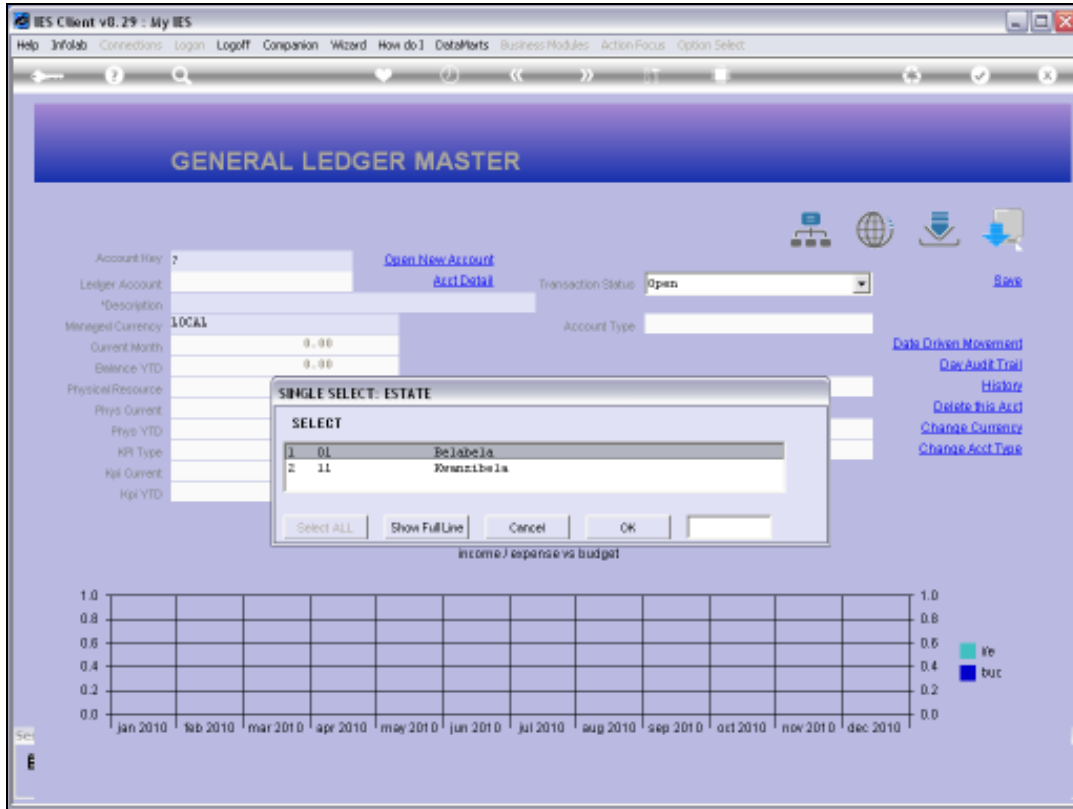
Slide 3

Slide notes: We identify the Cost Centre and select it.

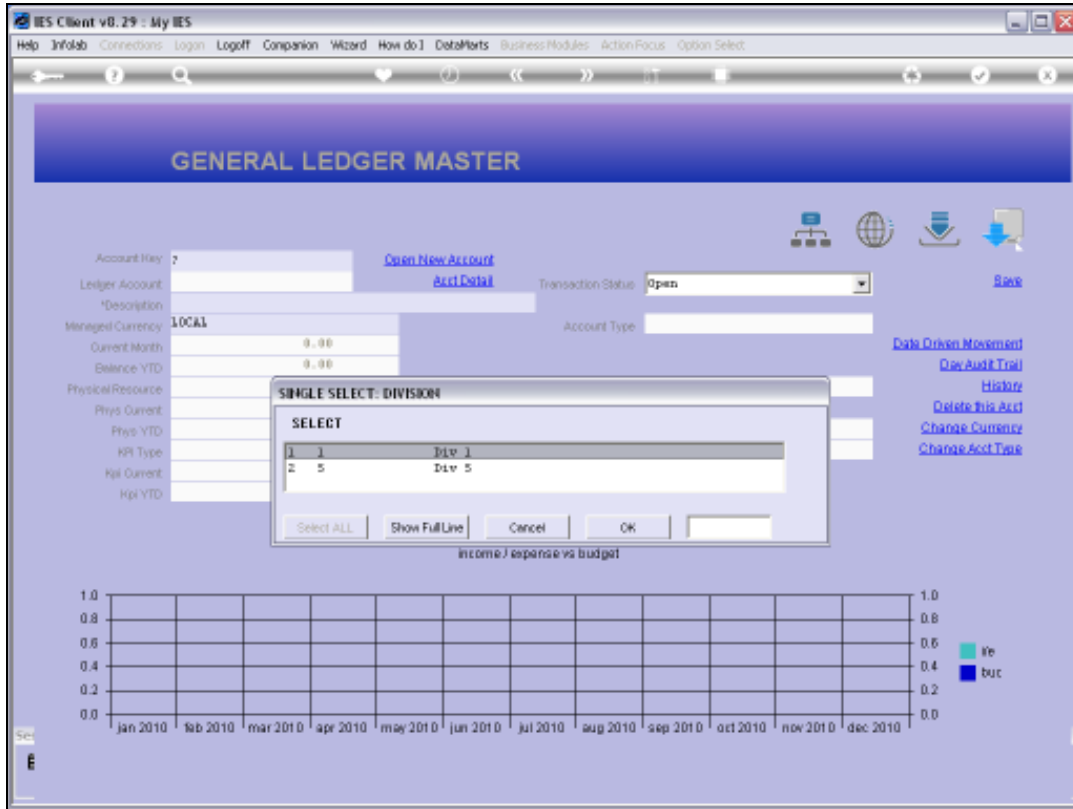


Slide 4

Slide notes: The lookup now checks the Chart Structure, and this will of course be different from one Company to the next. In this example, the Cost Centre is found in 2 Estates, so we need to select the Estate.



Slide 5
Slide notes:

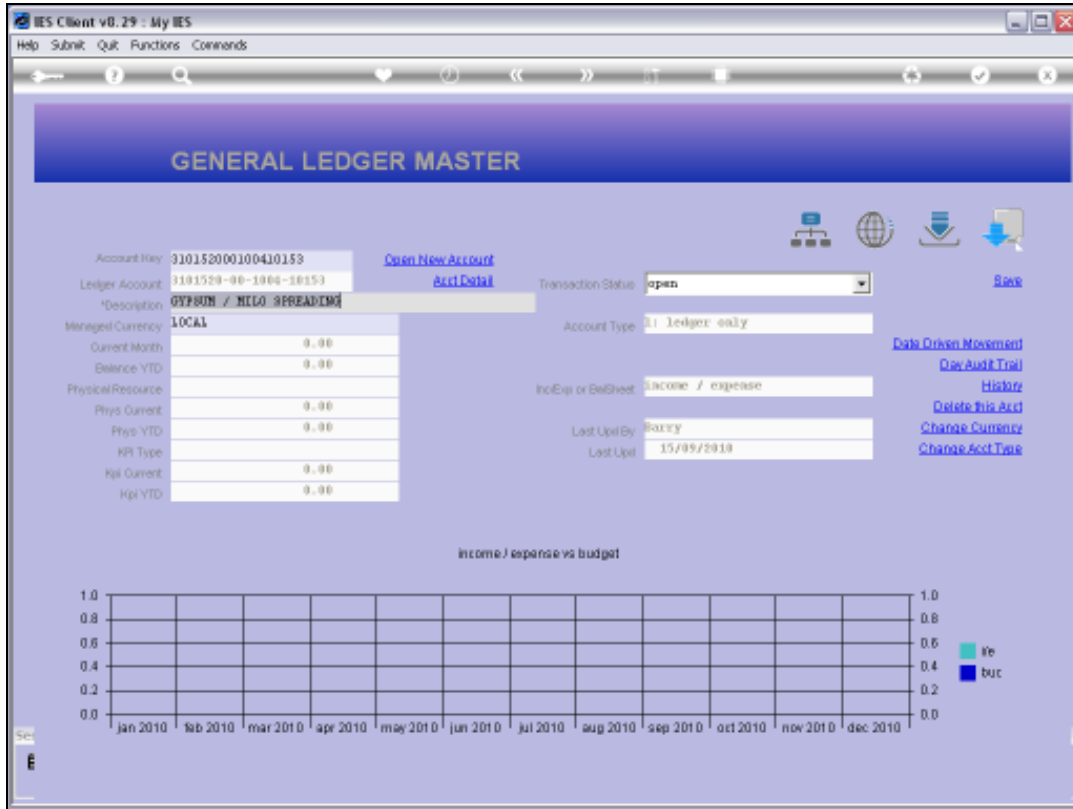


Slide 6

Slide notes: Within the selected Estate, the lookup now finds the Cost Centre in multiple Divisions, so we need to select the Division.

The screenshot displays the IES Client v8.29 interface for the 'GENERAL LEDGER MASTER' module. The window title is 'IES Client v8.29 : My IES'. The menu bar includes 'Help', 'InfoLab', 'Connections', 'Login', 'Logout', 'Companion', 'Wizard', 'How do I', 'DataMarts', 'Business Modules', 'Action Focus', and 'Option Select'. The main area features a form for account management with fields for 'Account Key', 'Ledger Account', 'Description', 'Managed Currency' (set to 'LOCAL'), 'Current Month', 'Balance YTD', 'Physical Resource', 'Phys Current', 'Phys YTD', 'PR Type', 'Hpl Current', and 'Hpl YTD'. A 'Transaction Status' dropdown is set to 'Open'. A 'SINGLE SELECT: DIVISION' dialog box is open, showing a table with two rows: '1 1 Div 1' and '2 5 Div 5'. The dialog has buttons for 'Select ALL', 'Show Full Line', 'Cancel', and 'OK'. Below the form is a chart titled 'Income / expense vs budget' with a grid for months from Jan 2010 to Dec 2010. The chart has a y-axis from 0.0 to 1.0 and a legend with 'inc' (light blue) and 'buc' (dark blue).

Slide 7
Slide notes:



Slide 8

Slide notes: After this, the lookup finds there is only 1 possibility left, and promptly selects the Account Code.

GENERAL LEDGER MASTER

Account Key: 310152000100410153 [Open New Account](#)
Ledger Account: 3101520-00-1000-10153 [Acct Detail](#) Transaction Status: open [Save](#)
Description: **GYF80N / NILO SPREADING**
Managed Currency: LOCAL Account Type: 31 ledger only [Data Origin Movement](#)
Current Month: 0.00 [Doc Audit Trail](#)
Balance YTD: 0.00 [History](#)
Physical Resource: Inc/Exp or BalSheet: Income / expense [Delete This Acct](#)
Phys Current: 0.00 [Change Currency](#)
Phys YTD: 0.00 [Change Acct Type](#)
PR Type: Last Upd By: Ruxxy
Hpl Current: 0.00 Last Upd: 15/09/2010
Hpl YTD: 0.00

income / expense vs budget

Month	Actual	Budget
Jan 2010		
Feb 2010		
Mar 2010		
Apr 2010		
May 2010		
Jun 2010		
Jul 2010		
Aug 2010		
Sep 2010		
Oct 2010		
Nov 2010		
Dec 2010		

Slide 9
Slide notes: