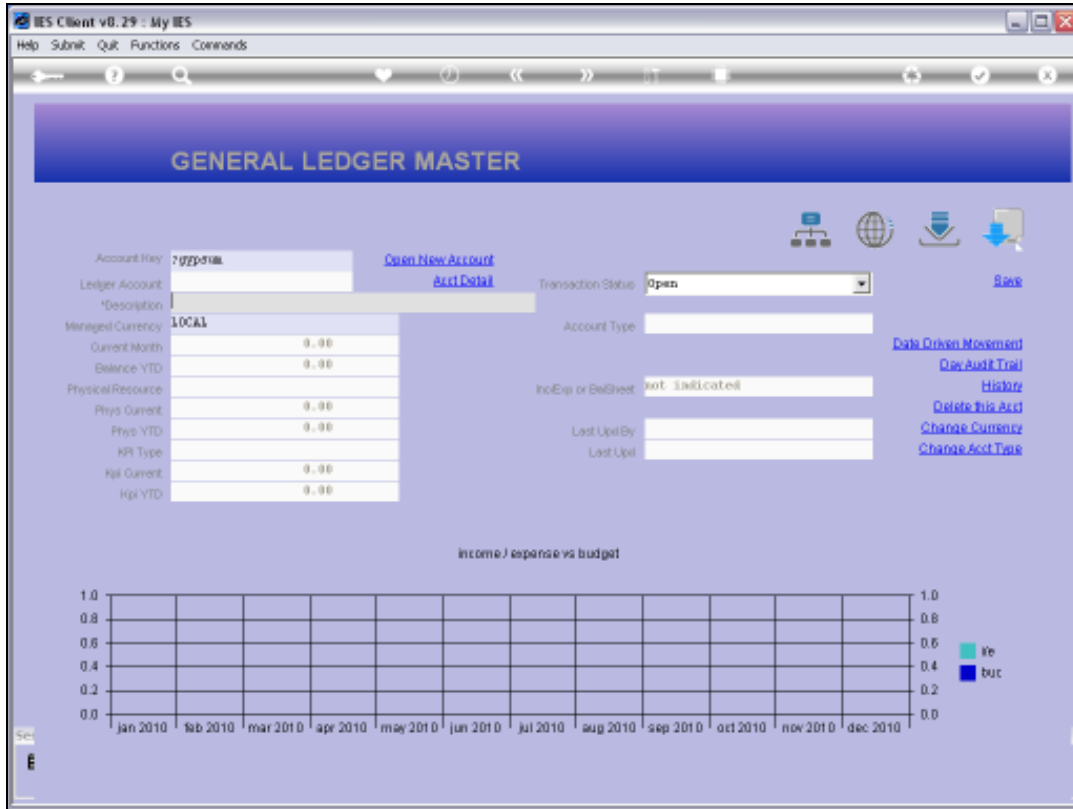


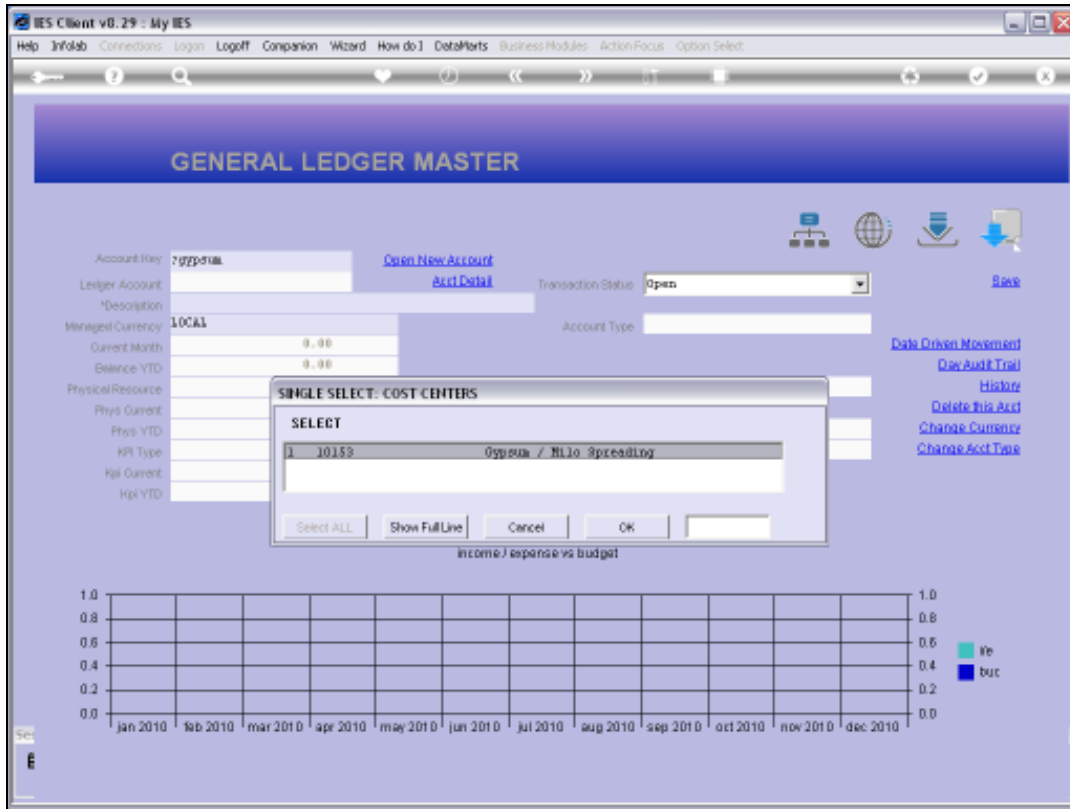


Slide 1

Slide notes: The Chart Lookup method is based on the local Ledger Structure, and is activated by starting with a question mark. We may optionally follow the "?" with a word in the Cost Centre, then we can select the Cost Centre more easily. And if the Cost Centre Code is known, then we can type it directly.

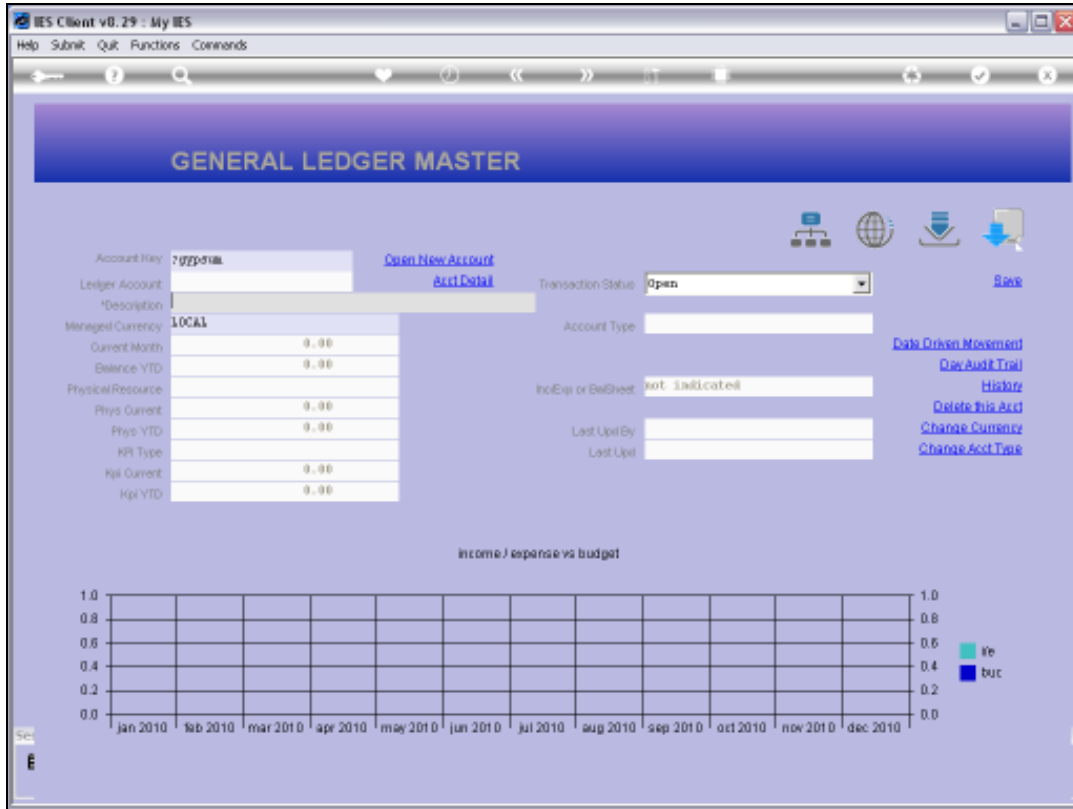


Slide 2
Slide notes:

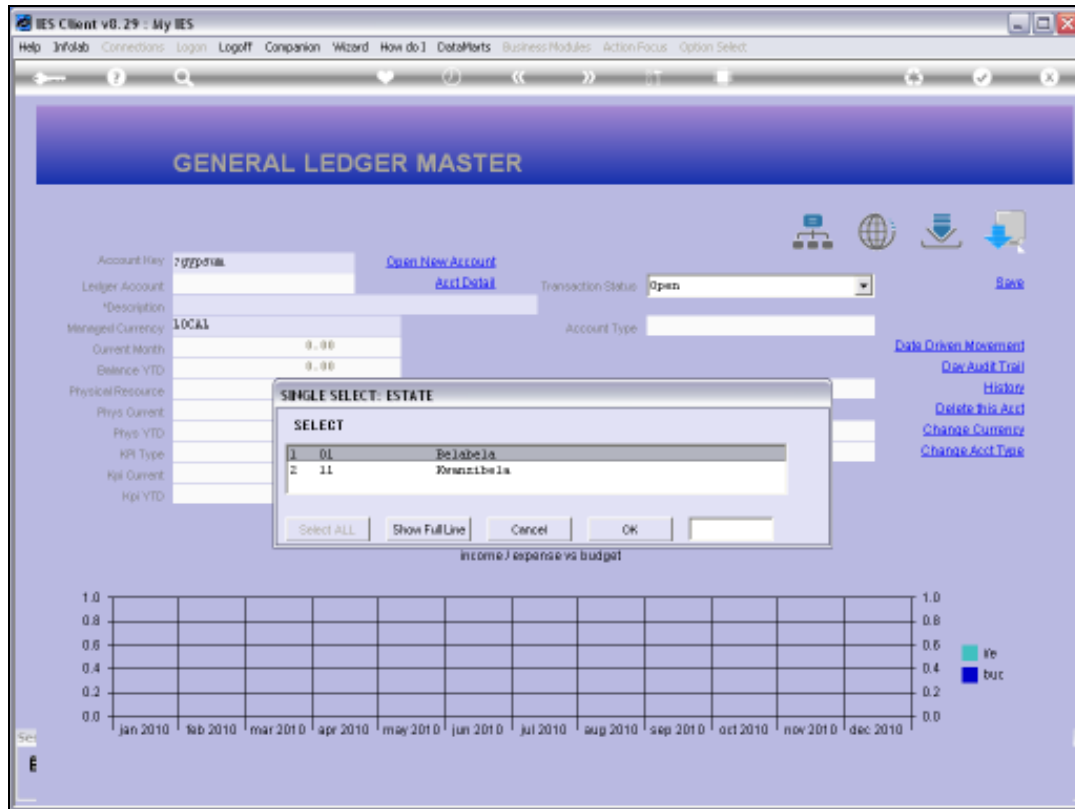


Slide 3

Slide notes: Only 1 qualifying Cost Centre has been found, and we select it.

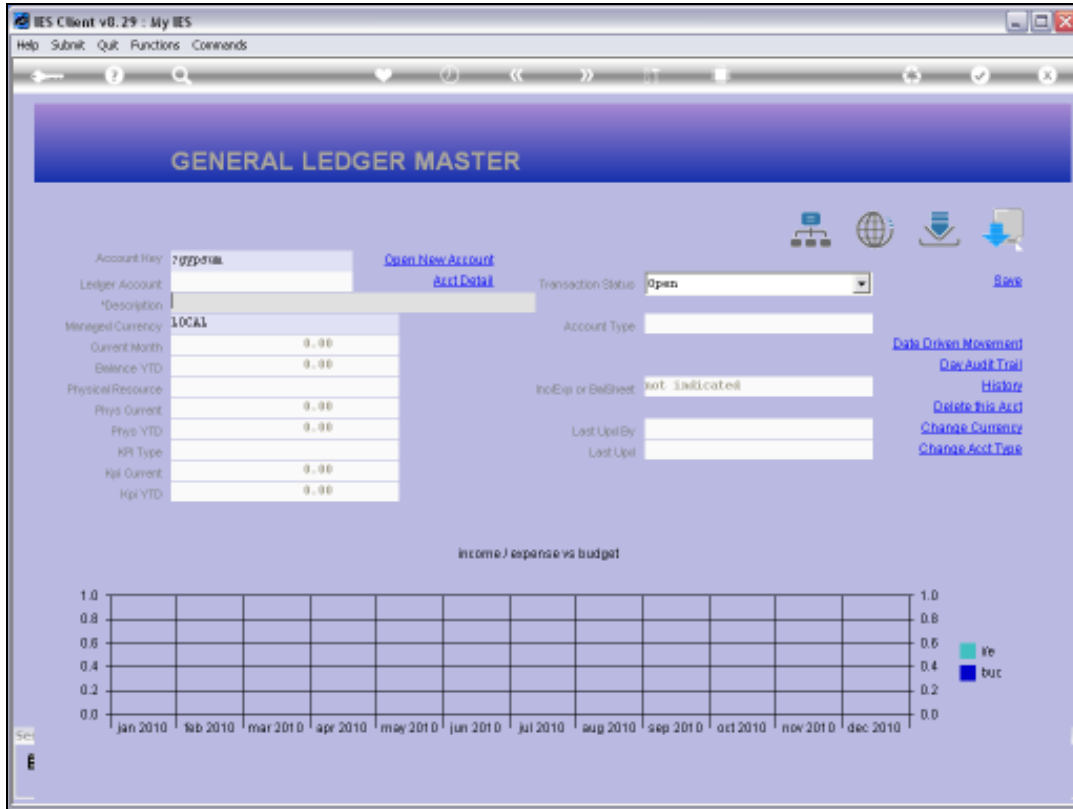


Slide 4
Slide notes:

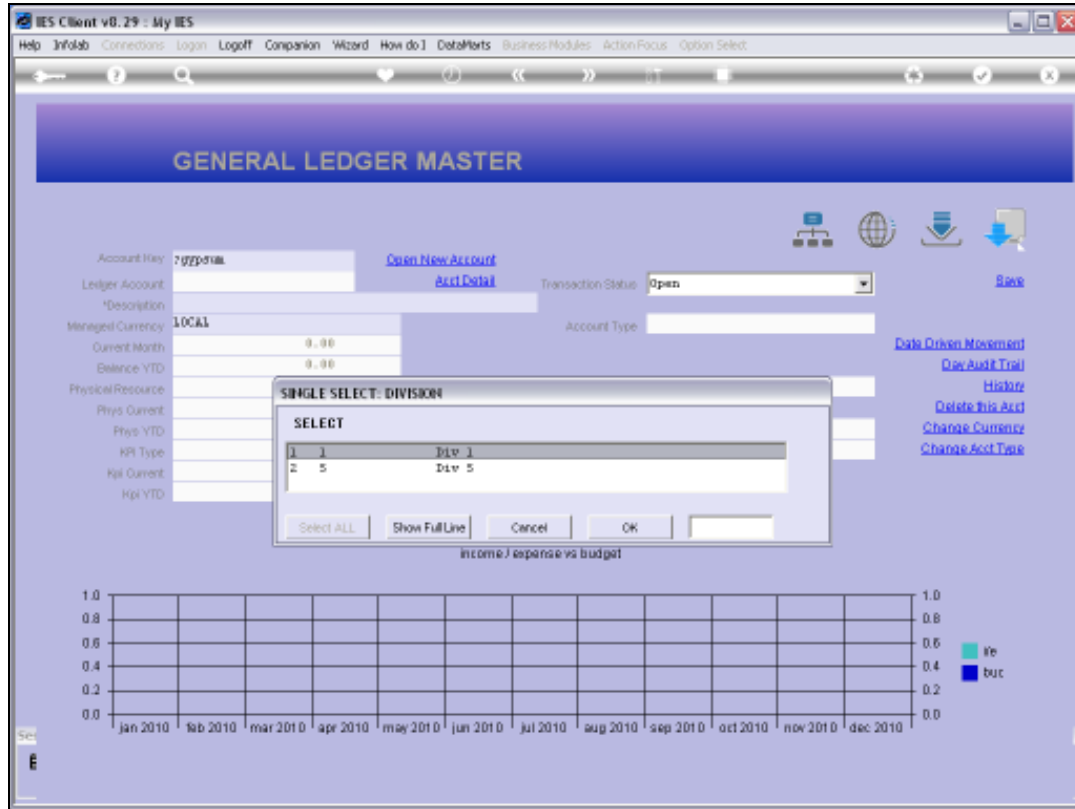


Slide 5

Slide notes: The lookup finds the Cost Centre in multiple Estates, and we need to select the Estate we want.

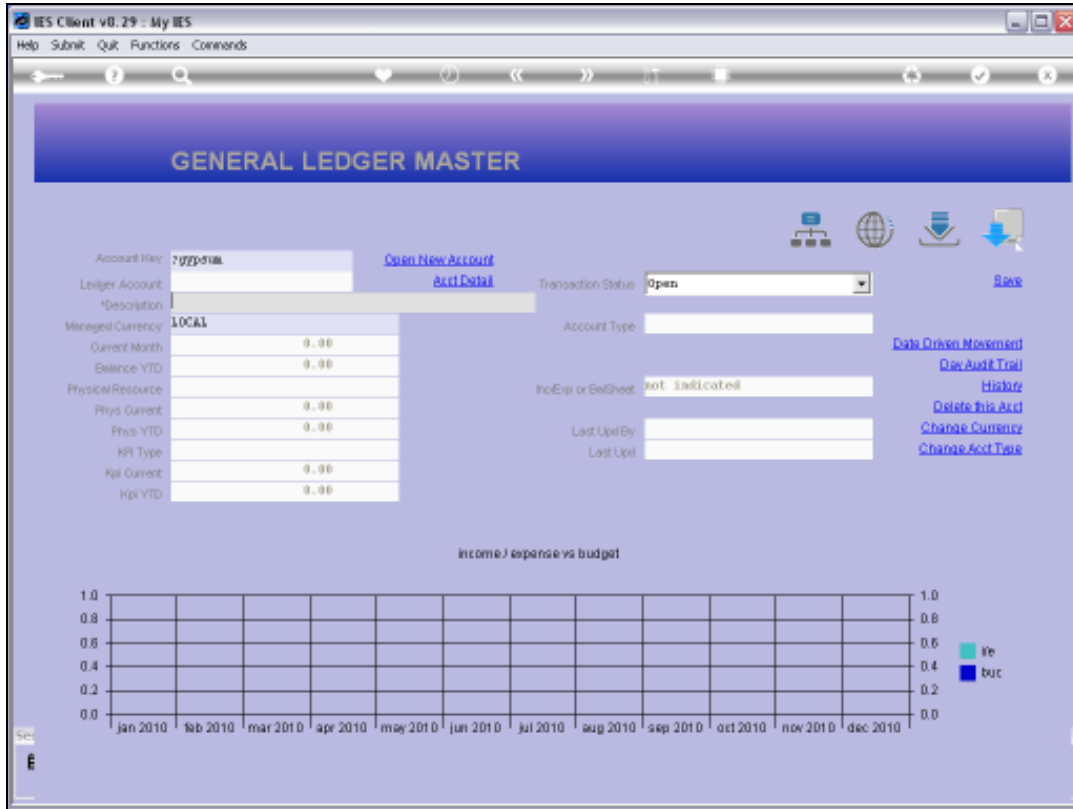


Slide 6
Slide notes:

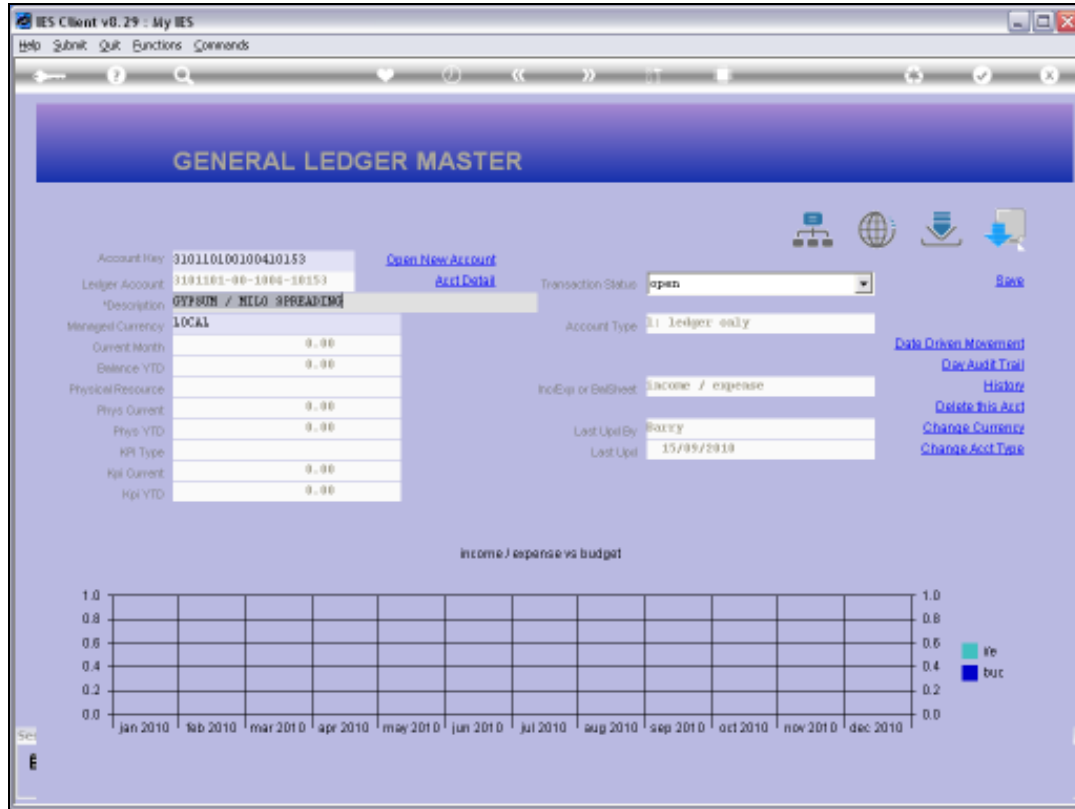


Slide 7

Slide notes: Within the selected Estate, the lookup finds the Cost Centre present in multiple Divisions. So we need to select the Division we want.



Slide 8
Slide notes:



Slide 9

Slide notes: In this example, the lookup finds no more multiple possibilities and promptly selects the Account Code.

Slide 10

Slide notes: If we know the Cost Centre, we can type it directly after the "?" and then we enter the lookup directly at the Cost Centre checkpoint.

GENERAL LEDGER MASTER

Account Key: 210153 [Open New Account](#)
Ledger Account: 1191181-98-1000-10153 [Acct Detail](#) Transaction Status: open [Save](#)
Description: GYF8UN / NILO SPREADING
Managed Currency: LOCAL Account Type: 31 ledger only [Data Drive Movement](#)
Current Month: 0.00 [Doc Audit Trail](#)
Balance YTD: 0.00 [History](#)
Physical Resource: Inc/Exp or BalSheet: Income / expense [Delete This Acct](#)
Phys Current: 0.00 [Change Currency](#)
Phys YTD: 0.00 [Change Acct Type](#)
PR Type: Last Upd By: Ruxxy
PR Current: 0.00 Last Upd: 15/09/2010
PR YTD: 0.00

income / expense vs budget

Month	Actual	Budget
Jan 2010		
Feb 2010		
Mar 2010		
Apr 2010		
May 2010		
Jun 2010		
Jul 2010		
Aug 2010		
Sep 2010		
Oct 2010		
Nov 2010		
Dec 2010		

Slide 11
Slide notes:

The screenshot displays the IES Client v8.29 interface for the 'GENERAL LEDGER MASTER'. The main window contains several data entry fields and a list of actions on the right side. A modal dialog box titled 'SINGLE SELECT: ESTATE' is open in the center, showing a table with two rows of data.

Account Information:

- Account Key: 210153 [Open New Account](#)
- Ledger Account: 1191101-00-1000-10153 [Acct Detail](#)
- Description: GYPBUN / NULO SPREADING
- Managed Currency: LOCAL
- Transaction Status: open
- Account Type: 11 Ledger only

Financial Data:

- Current Month: 0.00
- Balance YTD: 0.00
- Physical Resource: [empty]
- Phys Current: [empty]
- Phys YTD: [empty]
- HP Type: [empty]
- Hpl Current: [empty]
- Hpl YTD: [empty]

Actions:

- [Data Origin Movement](#)
- [Doc Audit Trail](#)
- [History](#)
- [Delete This Acct](#)
- [Change Currency](#)
- [Change Acct Type](#)

Modal Dialog: SINGLE SELECT: ESTATE

SELECT		
1	01	Belabela
2	11	Koranzibela

Buttons: Select ALL, Show Full Line, Cancel, OK

Income / expense vs budget

Chart: A grid chart showing income and expense vs budget from Jan 2010 to Dec 2010. The y-axis ranges from 0.0 to 1.0. A legend indicates 'inc' (income) in light blue and 'exp' (expense) in dark blue.

Slide 12
Slide notes:

Account Key: 210153 [Open New Account](#)

Ledger Account: 1191181-98-1000-10153 [Acct Detail](#) Transaction Status: open [Save](#)

Description: GYF8UN / NILO SPREADING

Managed Currency: LOCAL Account Type: 31 Ledger only [Data Drive Movement](#)

Current Month: 0.00 [Doc Audit Trail](#)

Balance YTD: 0.00 [History](#)

Physical Resource: Inc/Exp or BalSheet: Income / expense [Delete This Acct](#)

Phys Current: 0.00 [Change Currency](#)

Phys YTD: 0.00 [Change Acct Type](#)

HP Type: Last Upd By: Barry

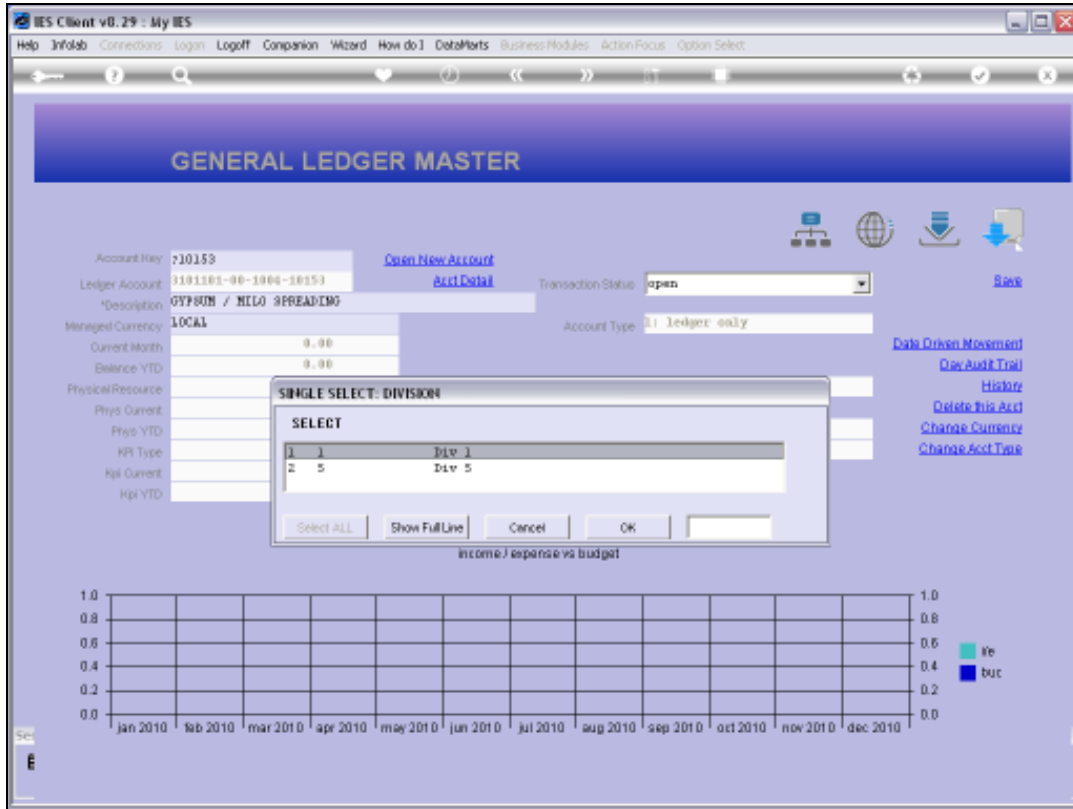
HP Current: 0.00 Last Upd: 15/09/2010

HP YTD: 0.00

income / expense vs budget

Month	Actual	Budget
Jan 2010		
Feb 2010		
Mar 2010		
Apr 2010		
May 2010		
Jun 2010		
Jul 2010		
Aug 2010		
Sep 2010		
Oct 2010		
Nov 2010		
Dec 2010		

Slide 13
Slide notes:



Slide 14
Slide notes:

GENERAL LEDGER MASTER

Account Key: 210153 [Open New Account](#)
Ledger Account: 1191181-98-1000-10153 [Acct Detail](#) Transaction Status: open [Save](#)
Description: GYF8UN / NILO SPREADING
Managed Currency: LOCAL Account Type: 31 Ledger only [Data Drive Movement](#)
Current Month: 0.00 [Doc Audit Trail](#)
Balance YTD: 0.00 [History](#)
Physical Resource: Inc/Exp or BalSheet: Income / expense [Delete This Acct](#)
Phys Current: 0.00 [Change Currency](#)
Phys YTD: 0.00 [Change Acct Type](#)
NPI Type: Last Upd By: Barry
NPI Current: 0.00 Last Upd: 15/09/2010
NPI YTD: 0.00

income / expense vs budget

Month	Actual	Budget
Jan 2010		
Feb 2010		
Mar 2010		
Apr 2010		
May 2010		
Jun 2010		
Jul 2010		
Aug 2010		
Sep 2010		
Oct 2010		
Nov 2010		
Dec 2010		

Slide 15
Slide notes:

GENERAL LEDGER MASTER

Account Key: 310152000100410153 [Open New Account](#)
Ledger Account: 3101520-00-1000-10153 [Acct Detail](#) Transaction Status: [Save](#)
Description: GYF80N / NILO SPREADING
Managed Currency: LOCAL Account Type: 31 Ledger only [Data Drive Movement](#)
Current Month: 0.00 [Doc Audit Trail](#)
Balance YTD: 0.00 [History](#)
Physical Resource: Inc/Exp or BalSheet: Income / expense [Delete This Acct](#)
Phys Current: 0.00 [Change Currency](#)
Phys YTD: 0.00 [Change Acct Type](#)
PR Type: Last Upd By: Ruxxy
PR Current: 0.00 Last Upd: 15/09/2010
PR YTD: 0.00

income / expense vs budget

Month	Actual	Budget
Jan 2010		
Feb 2010		
Mar 2010		
Apr 2010		
May 2010		
Jun 2010		
Jul 2010		
Aug 2010		
Sep 2010		
Oct 2010		
Nov 2010		
Dec 2010		

Slide 16
Slide notes: