

Slide 1

Slide notes: Custom and Odds Report Flags, and Master Accounts, are the very same objects, although used in multiple ways and contexts.

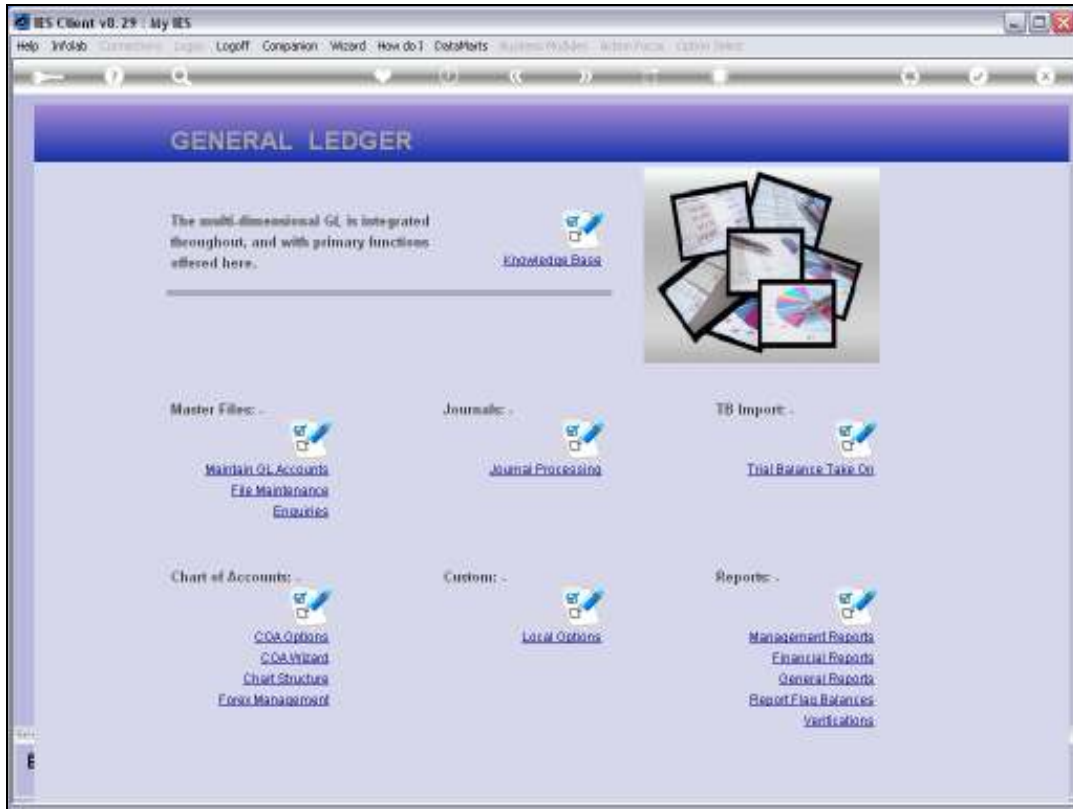


Slide 2  
Slide notes:



### Slide 3

Slide notes: We may enter the File Maintenance options for the Master Accounts and the Custom and Odds Report Flags from the Ledger File Maintenance menu, and the 2 entry points still arrive at the same function.



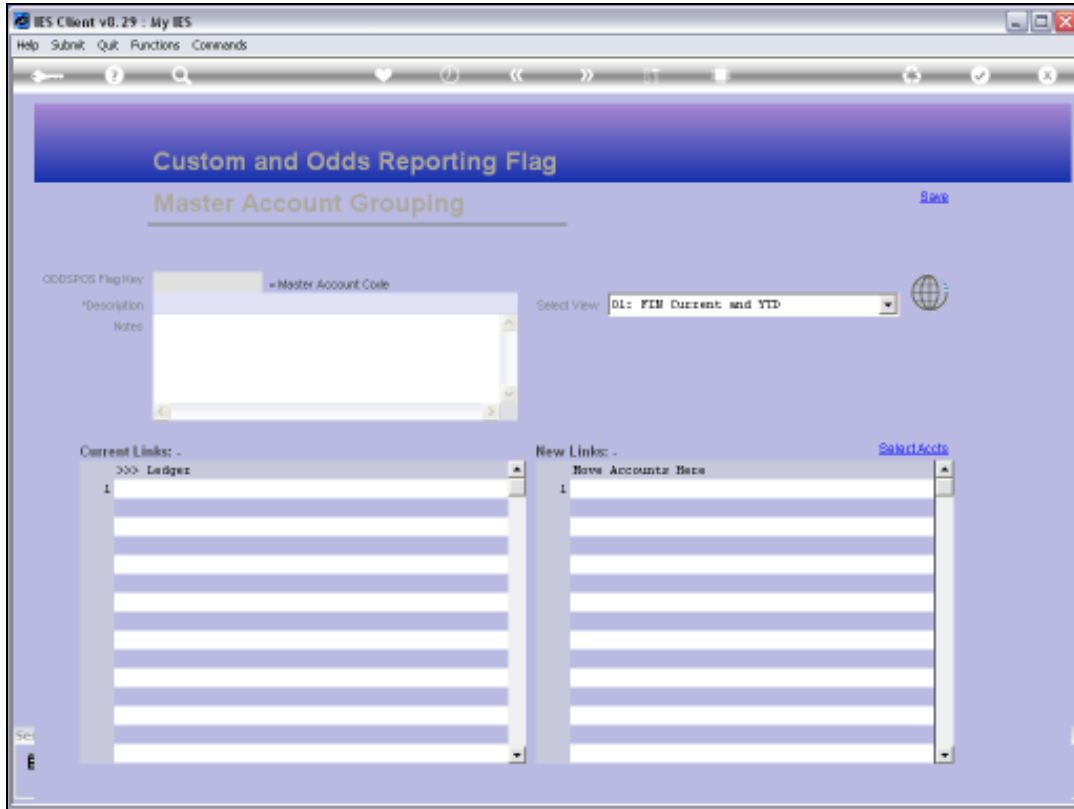
Slide 4  
Slide notes:



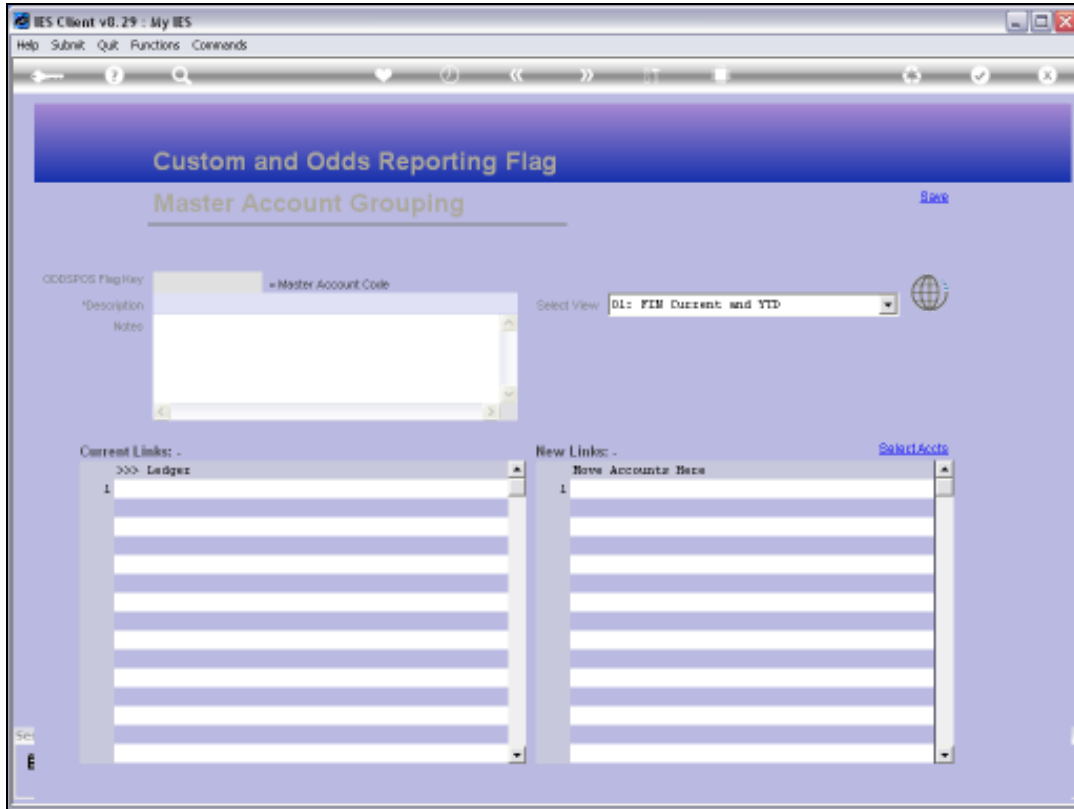
Slide 5  
Slide notes:



Slide 6  
Slide notes:



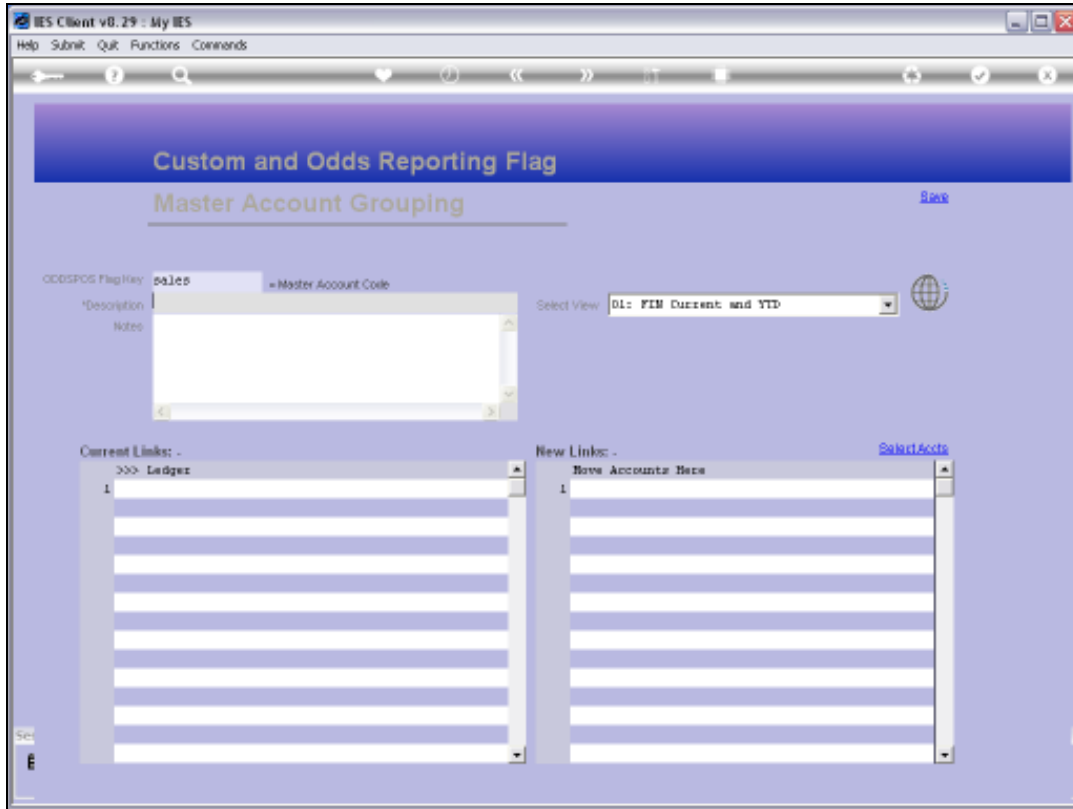
Slide 7  
Slide notes:



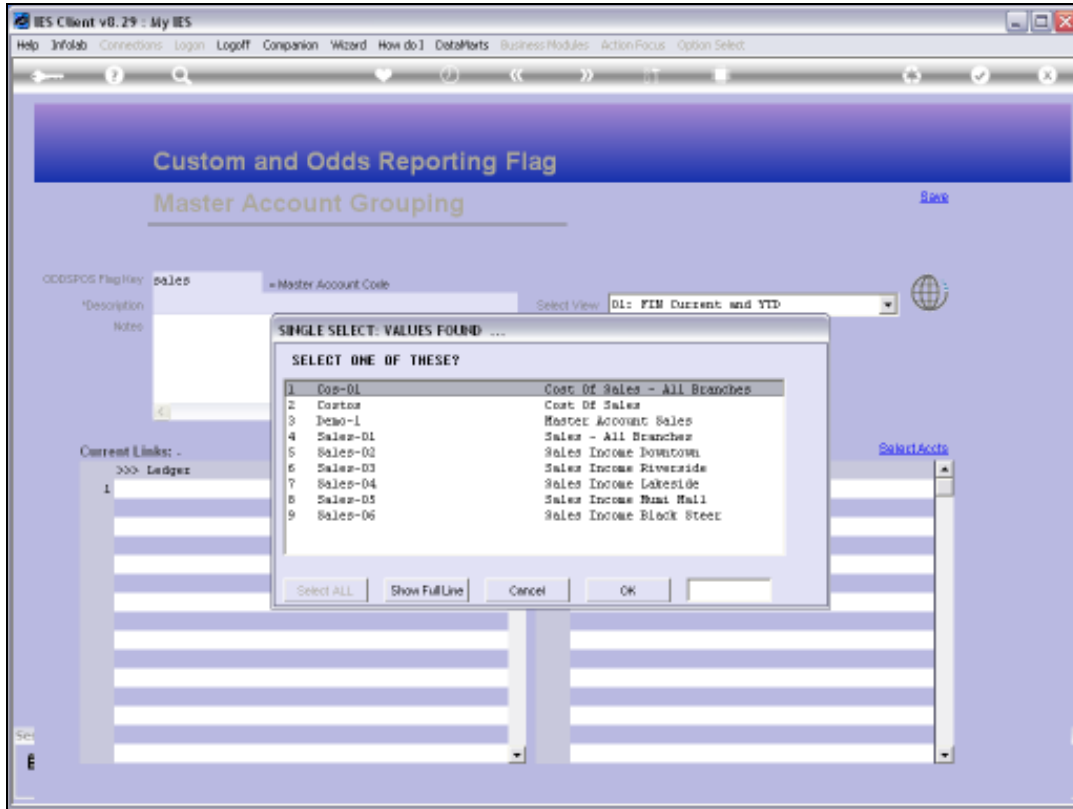
Slide 8

Slide notes: The usual lookup options are available to retrieve an existing Master Account, or else we may specify a new Key for a new Master Account that we wish to create.



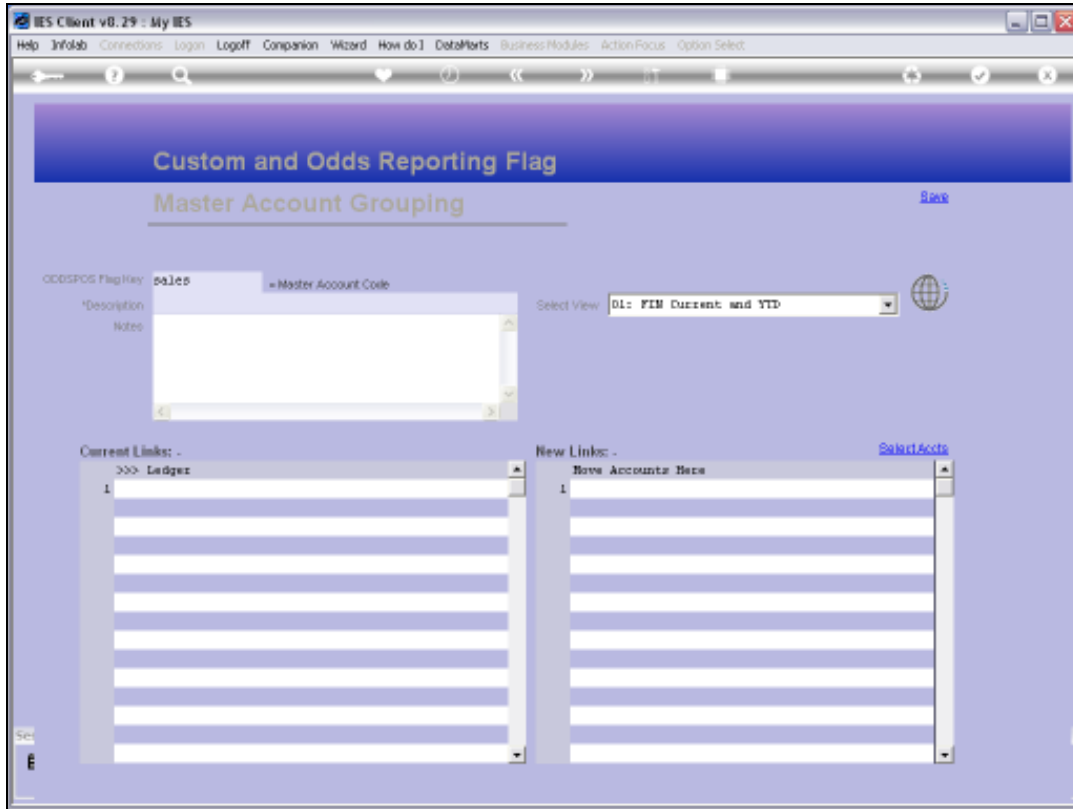


Slide 9  
Slide notes:

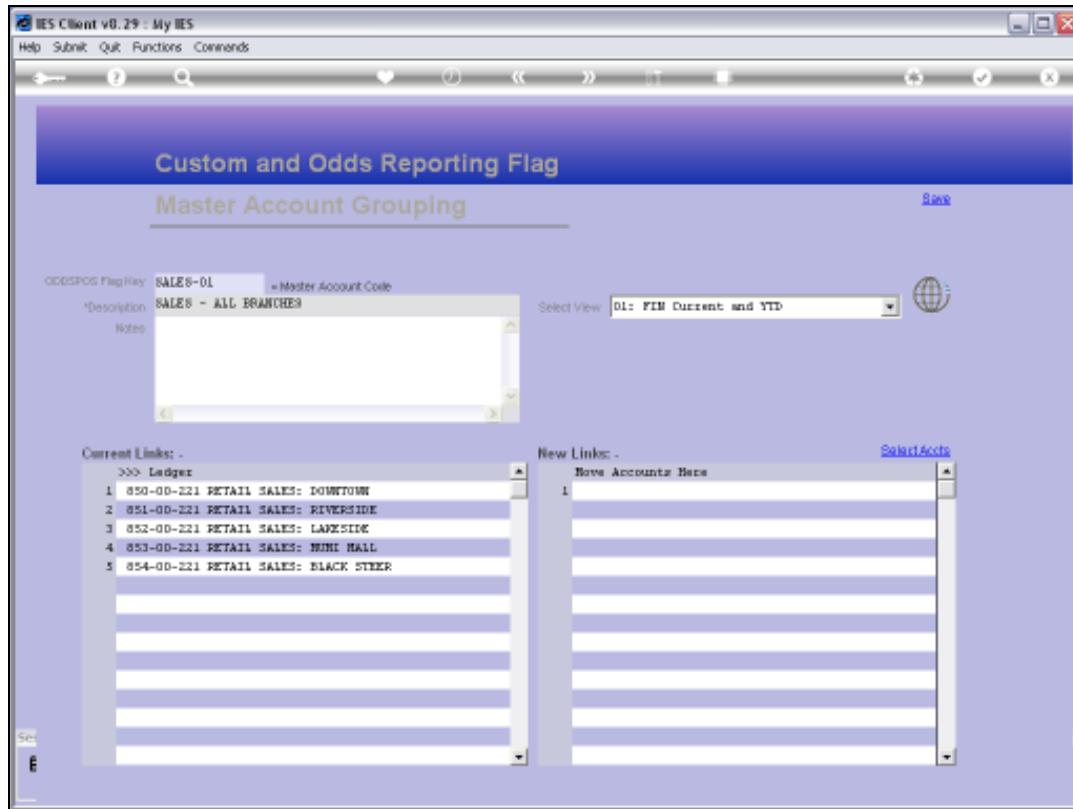


Slide 10

Slide notes:

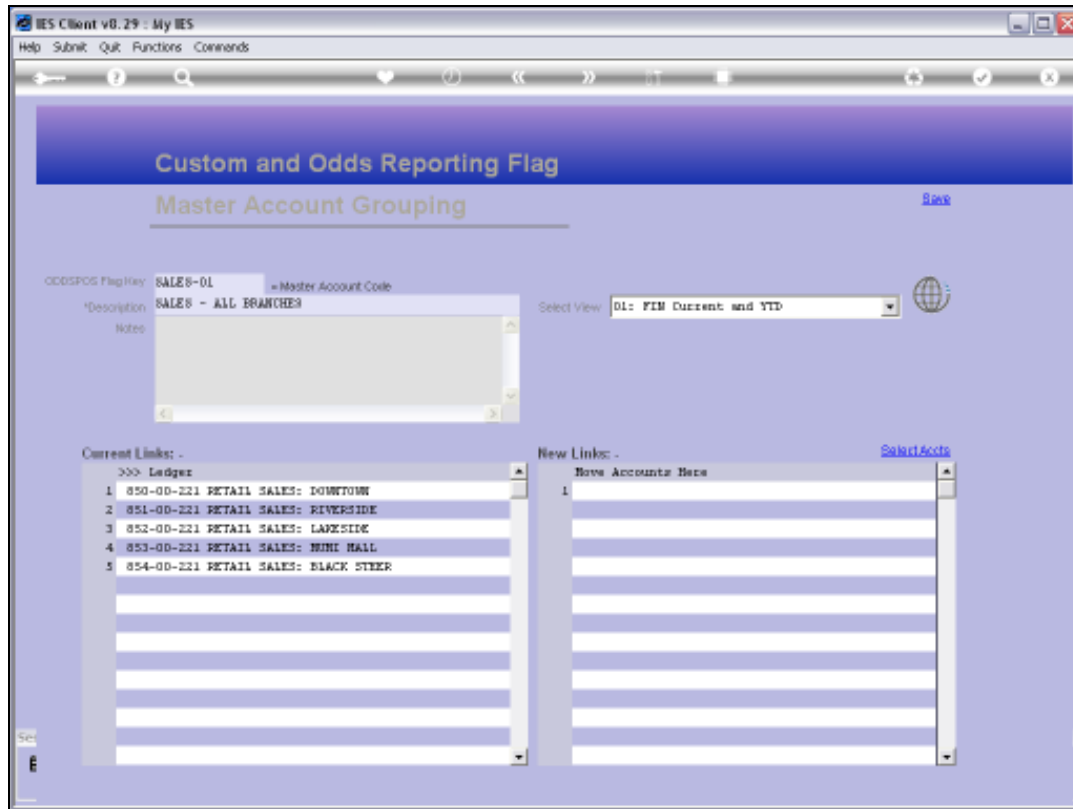


Slide 11  
Slide notes:



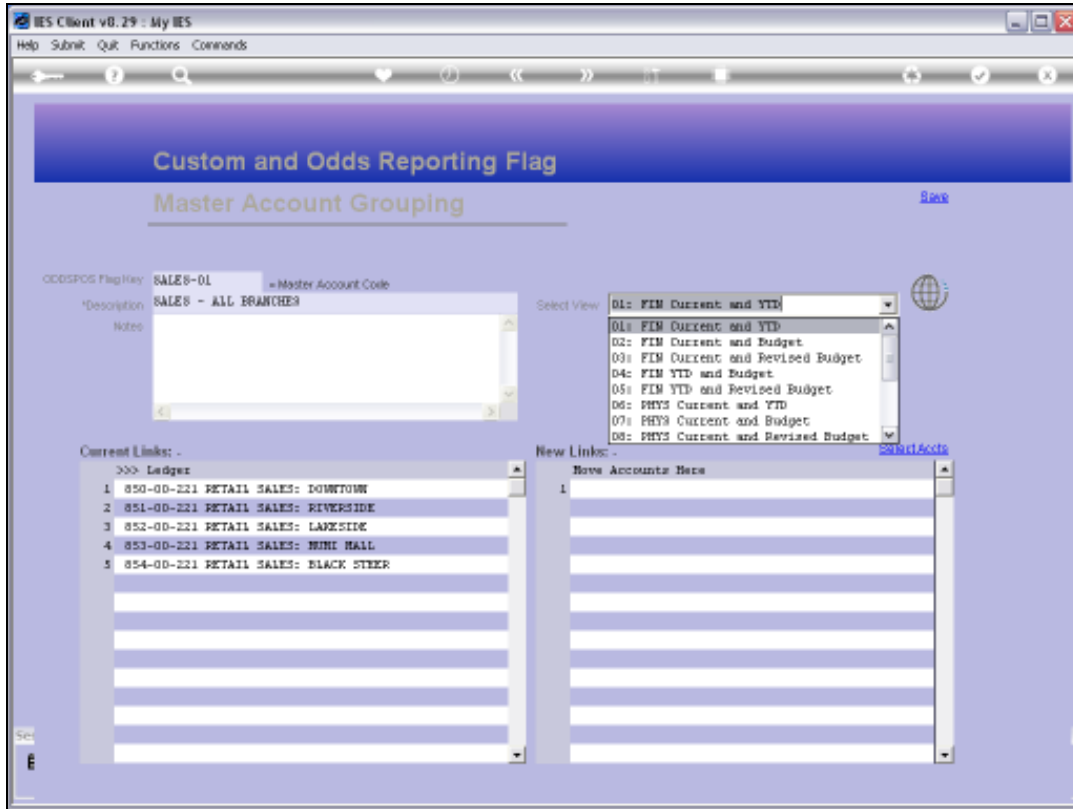
## Slide 12

Slide notes: A Custom Report Flag, also a Master Account, is different from other Report Flag types in the sense that any GL Account can subscribe to many Master Accounts, but each GL Account can only subscribe to 1 of each of the other Report Flag types.



## Slide 13

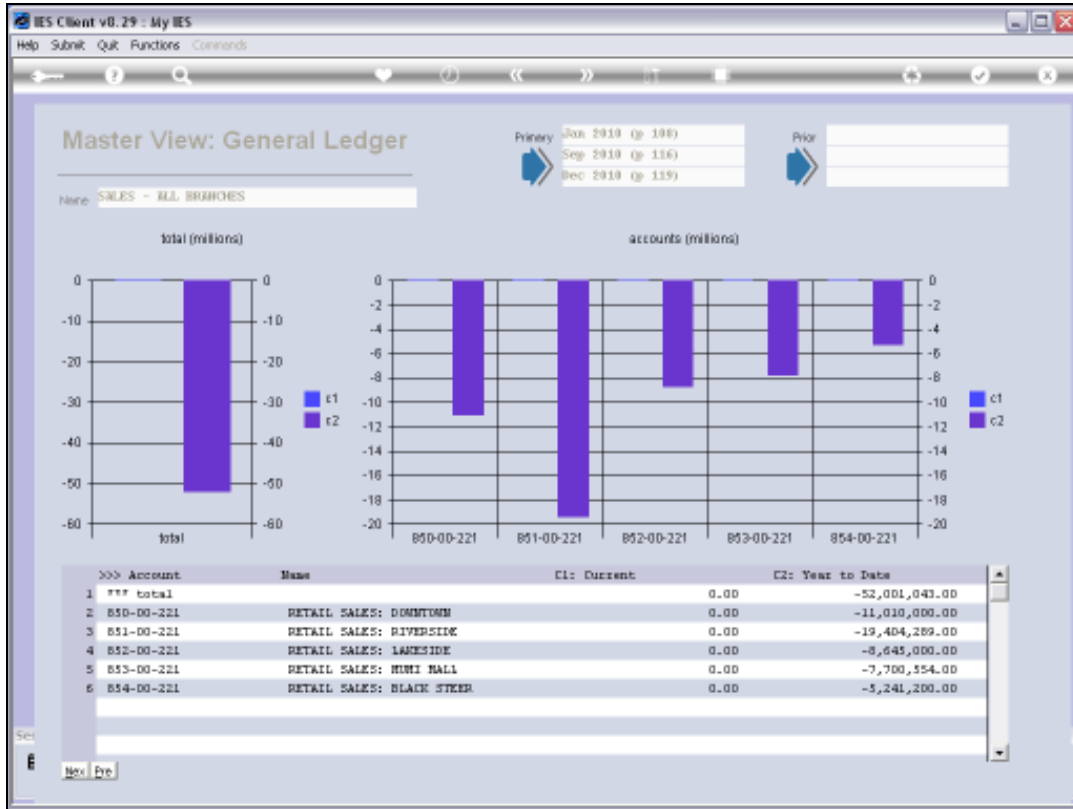
Slide notes: A Master Account has a short unique code, which we can assign, and we give it a Description that it can be identified by. A Master Account may include any number of GL Accounts, and has a direct Business Intelligence entry function.



Slide 14  
Slide notes:



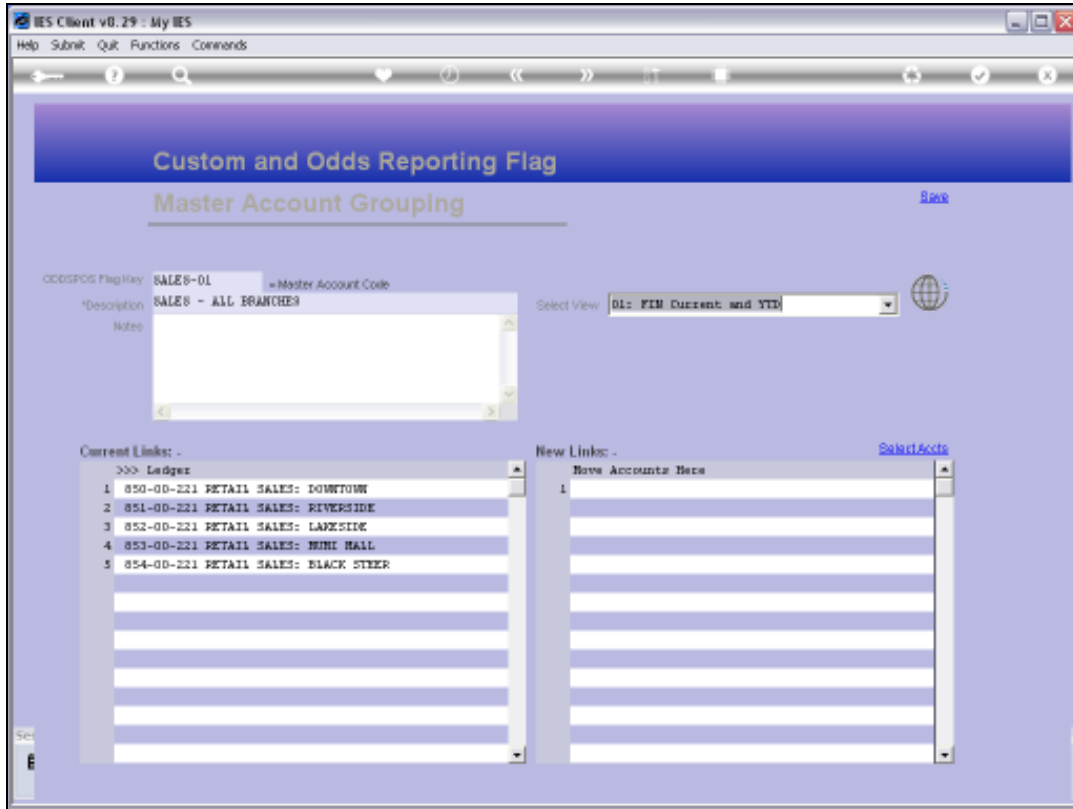
Slide 15  
Slide notes:



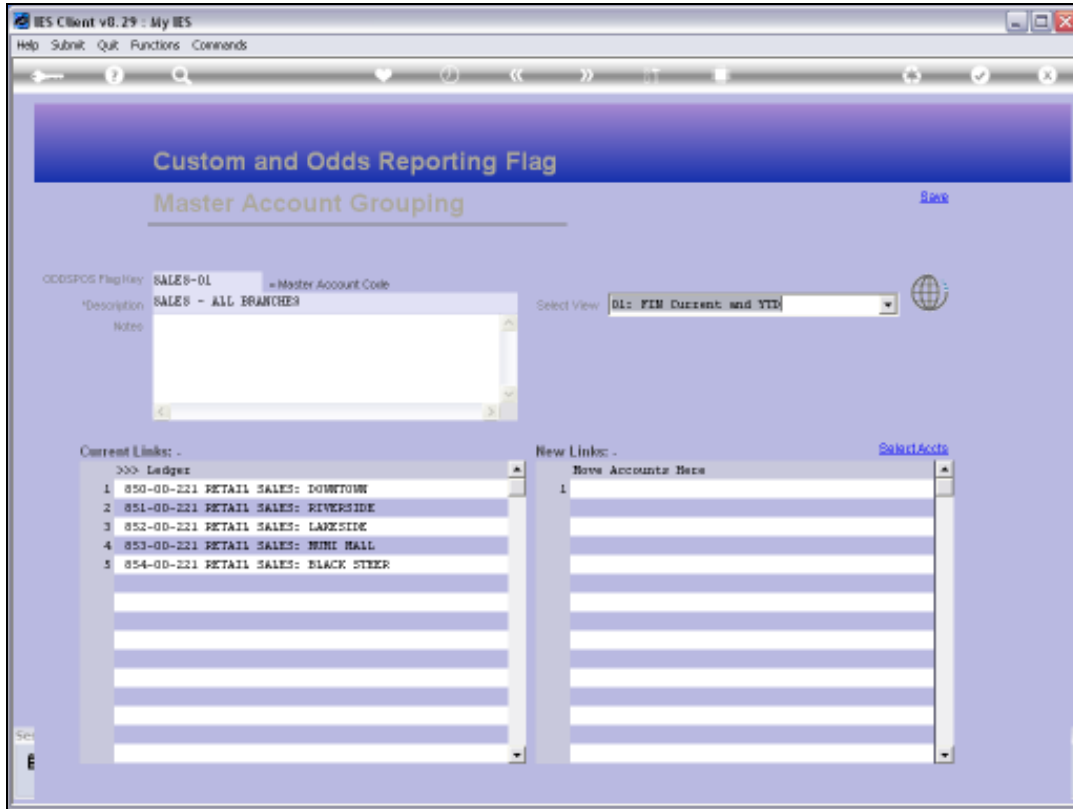
Slide 16

Slide notes: The Business View supports further drilling into the included Ledger Accounts.

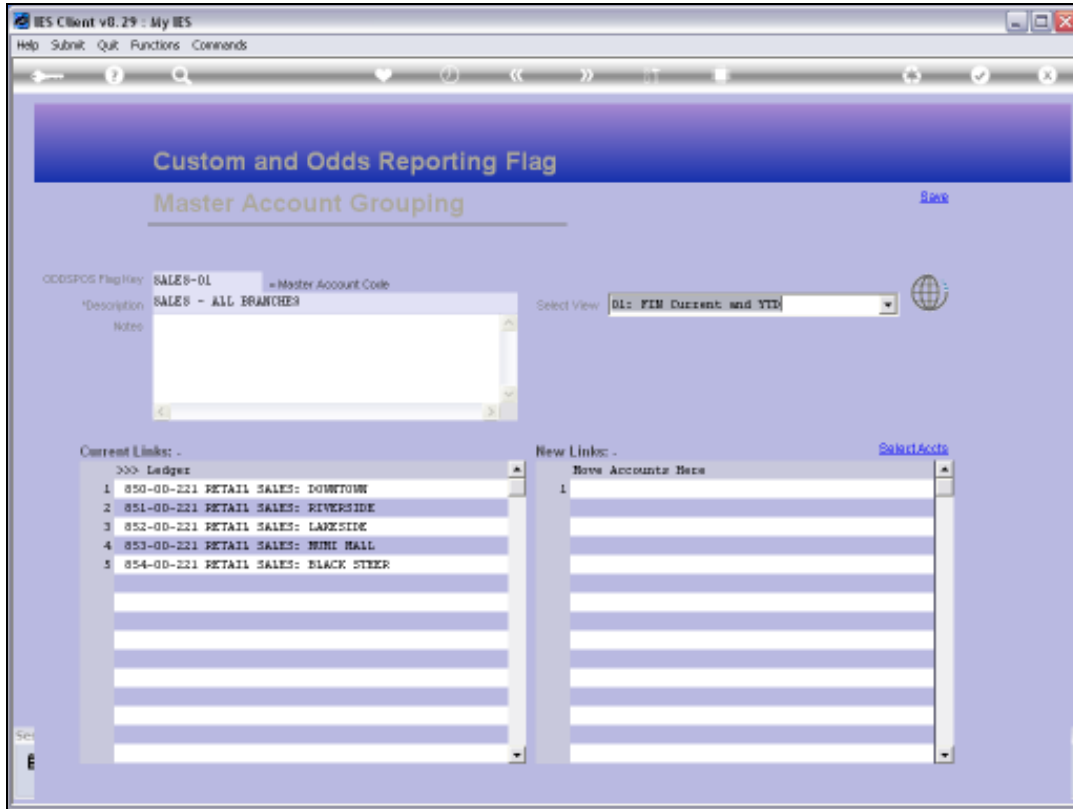




Slide 17  
Slide notes:

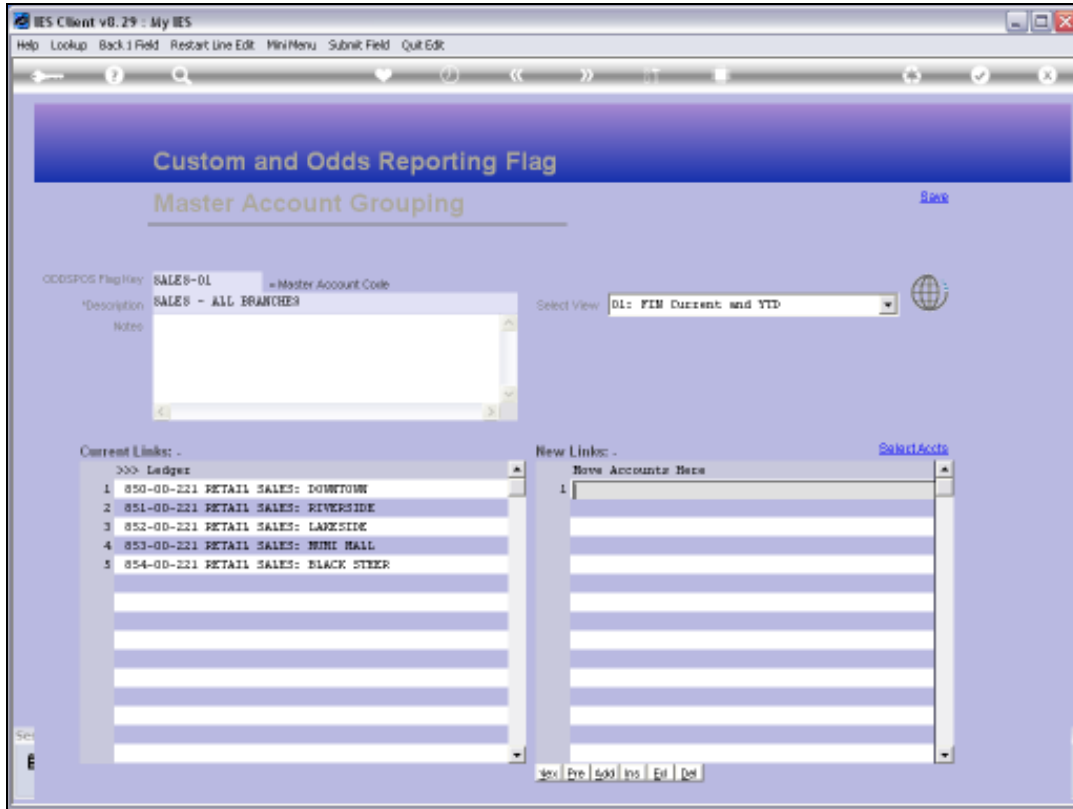


Slide 18  
Slide notes:

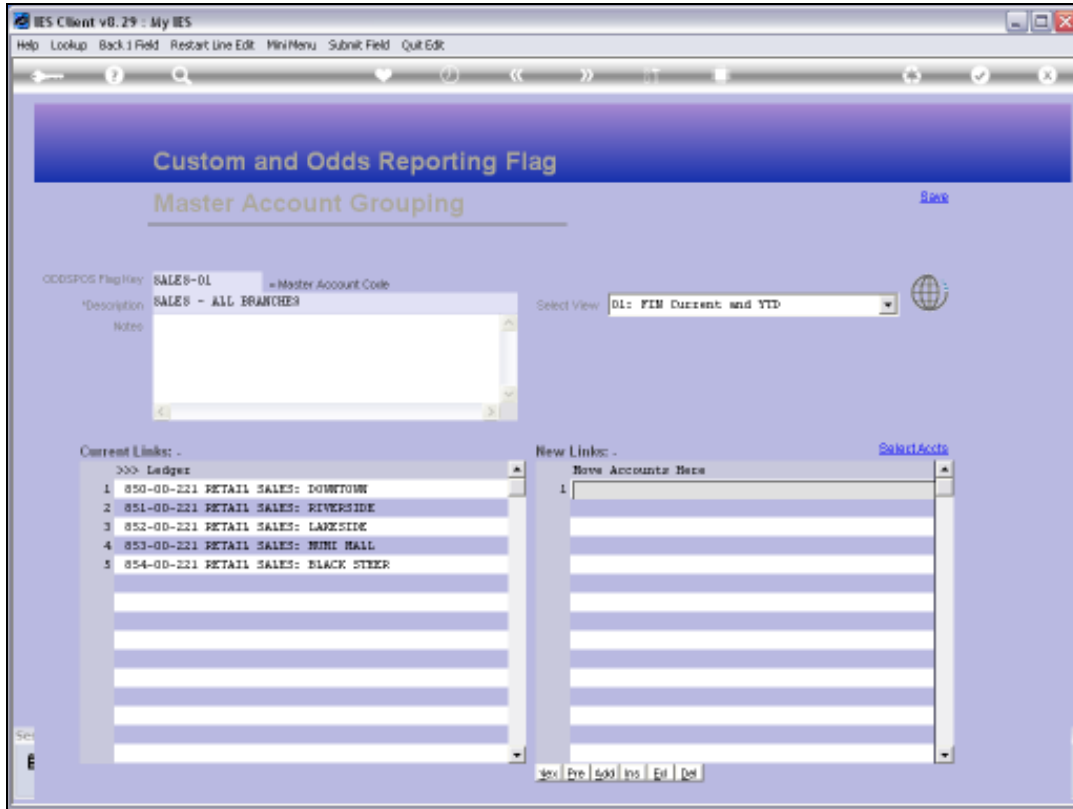


Slide 19

Slide notes: Like other Report Flags, we can state them directly on the GL Account Maintenance screens, and we can insert them en masse with the Chart wizard, but we can also do it at the Flag Master screen. Under 'New Links', we can directly lookup and list any Accounts that should include this Flag as a Report Flag and at the same time become part of this Master Account.



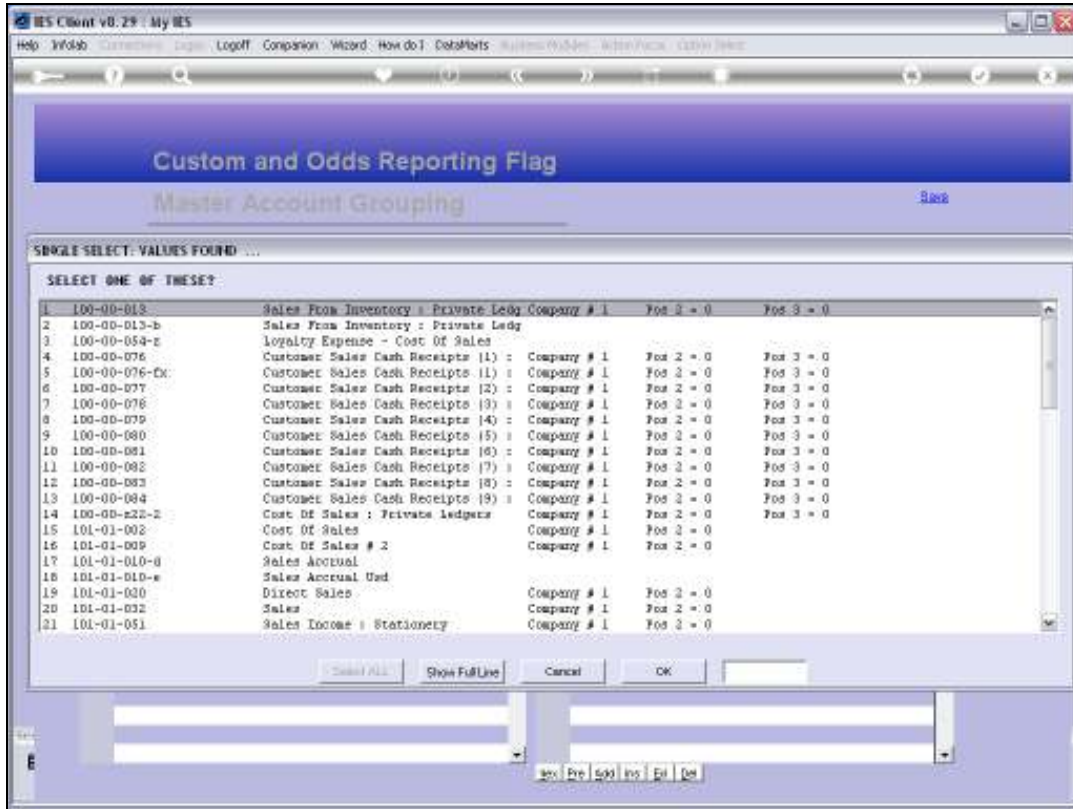
Slide 20  
Slide notes:



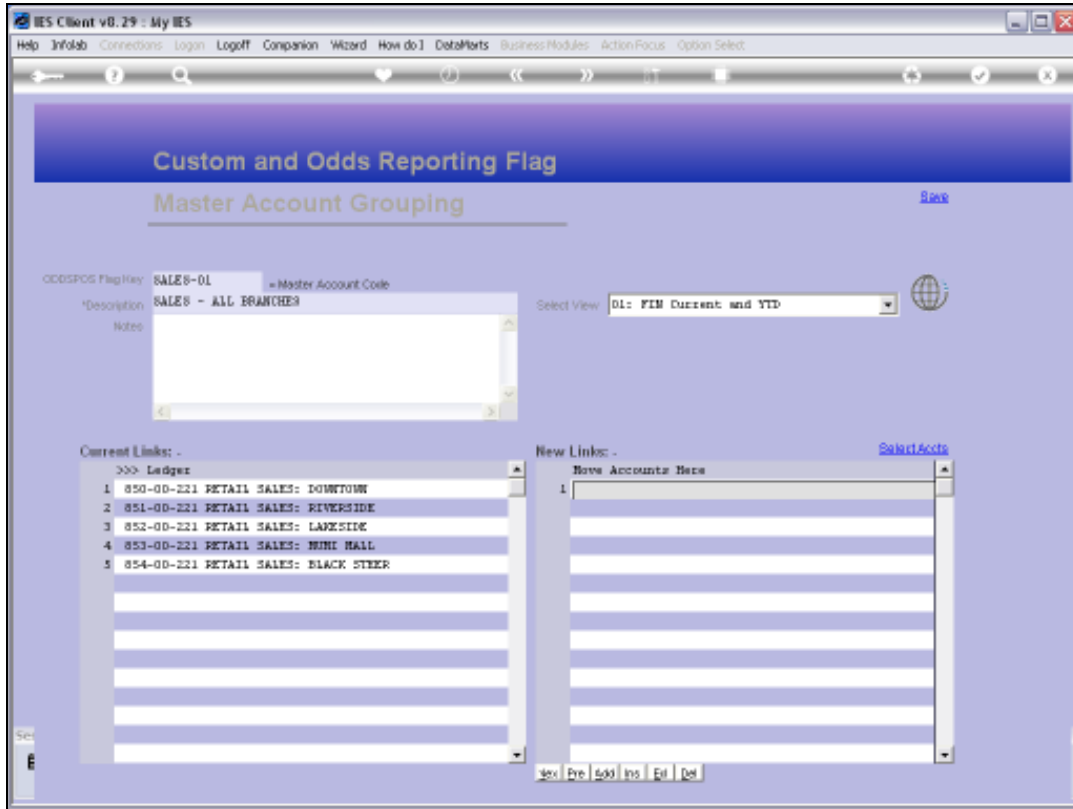
Slide 21  
Slide notes:



Slide 22  
Slide notes:



Slide 23  
Slide notes:



Slide 24

Slide notes:





Slide 25

Slide notes: We can also use the more powerful 'Select Accounts' function to include any number of Accounts.

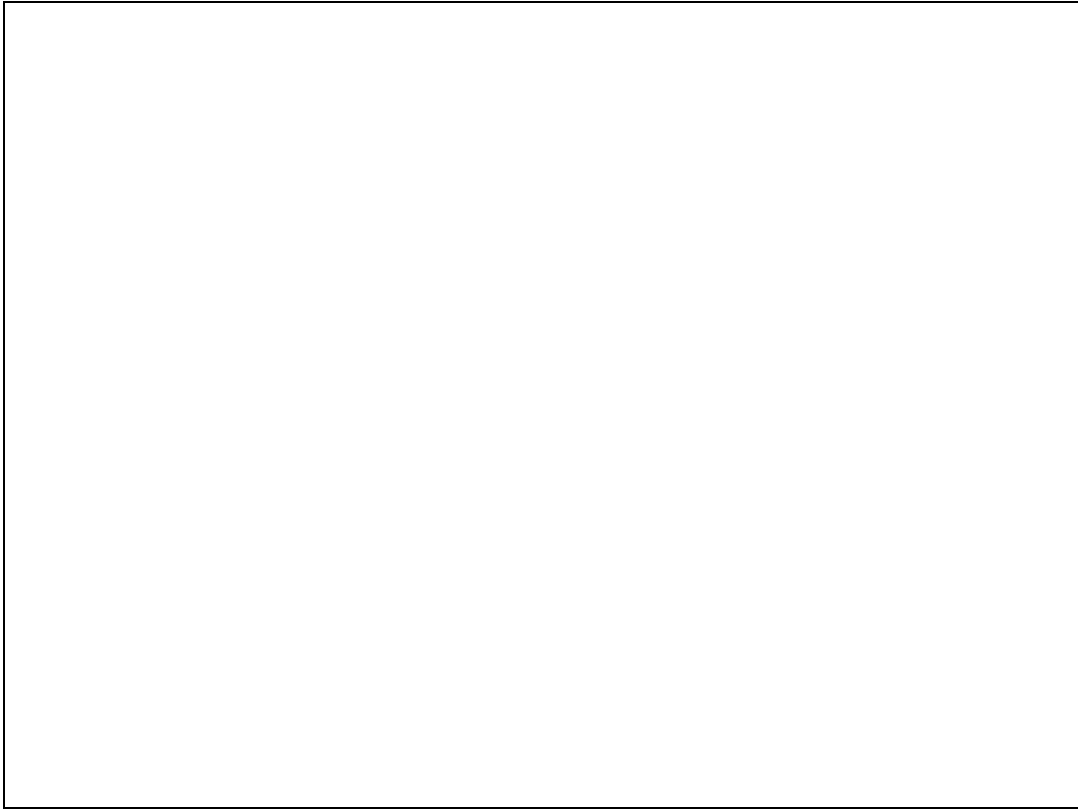


Slide 26

Slide notes: Any of the existing Ledger selection methods may be used to select the Accounts that we want to include.



Slide 27  
Slide notes:

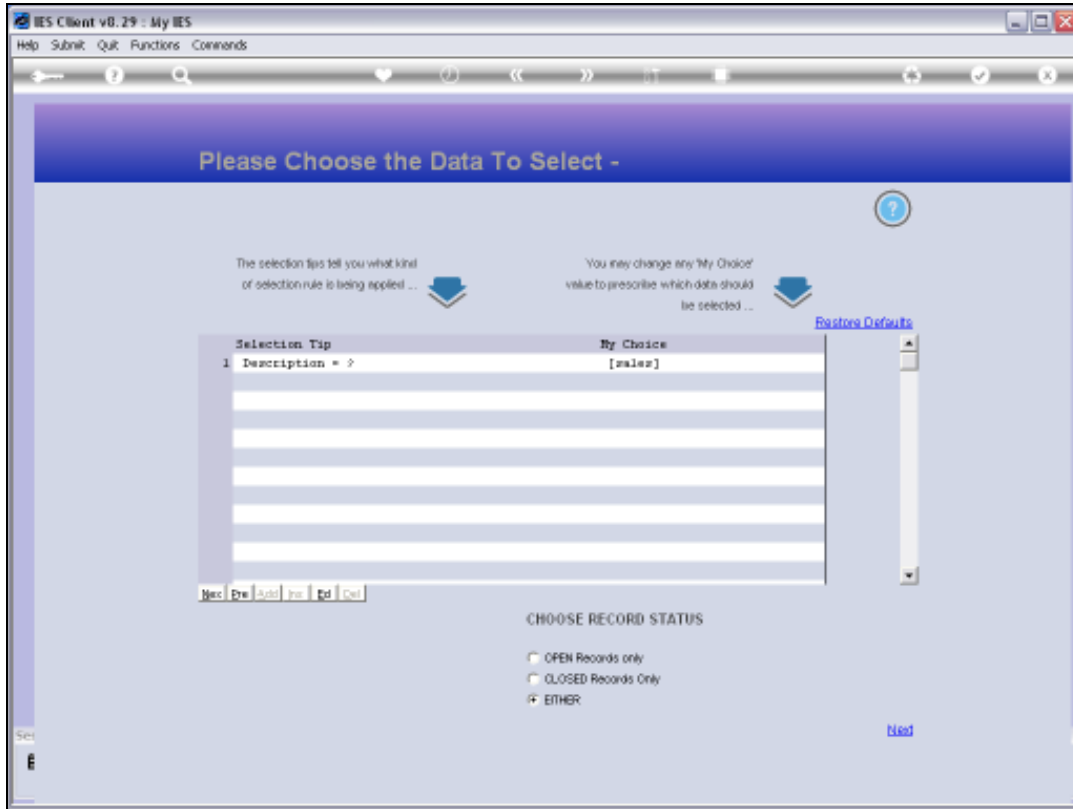


Slide 28

Slide notes:

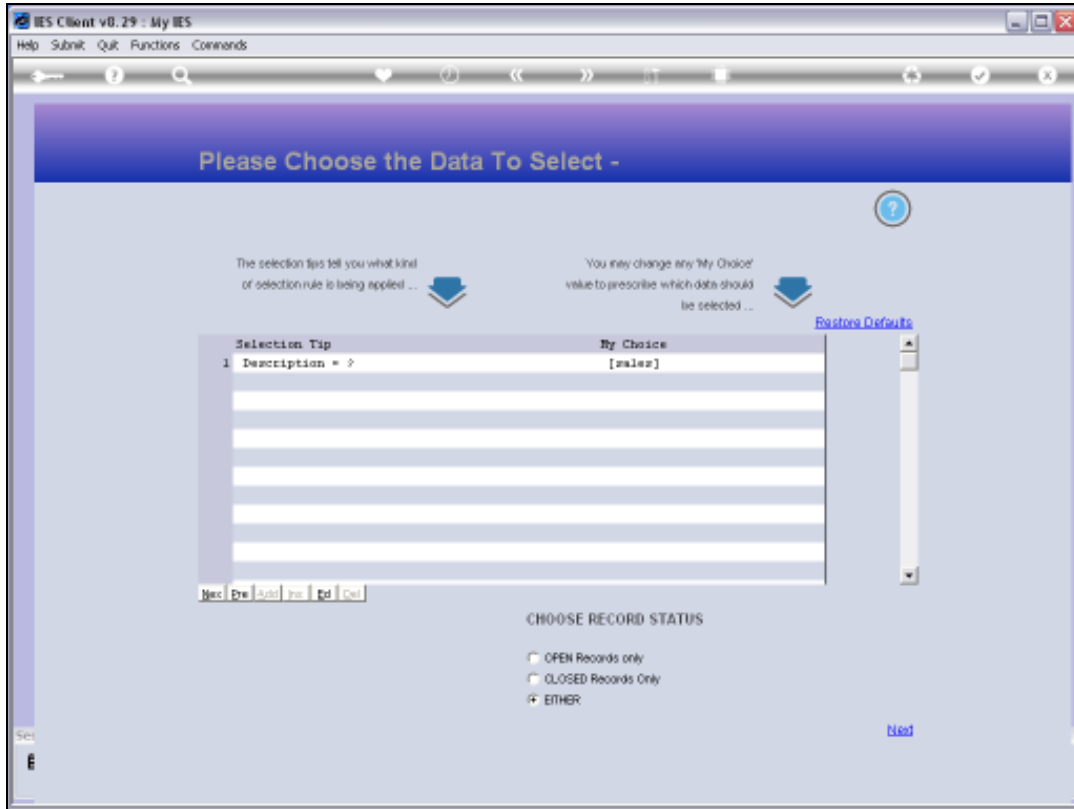


Slide 29  
Slide notes:

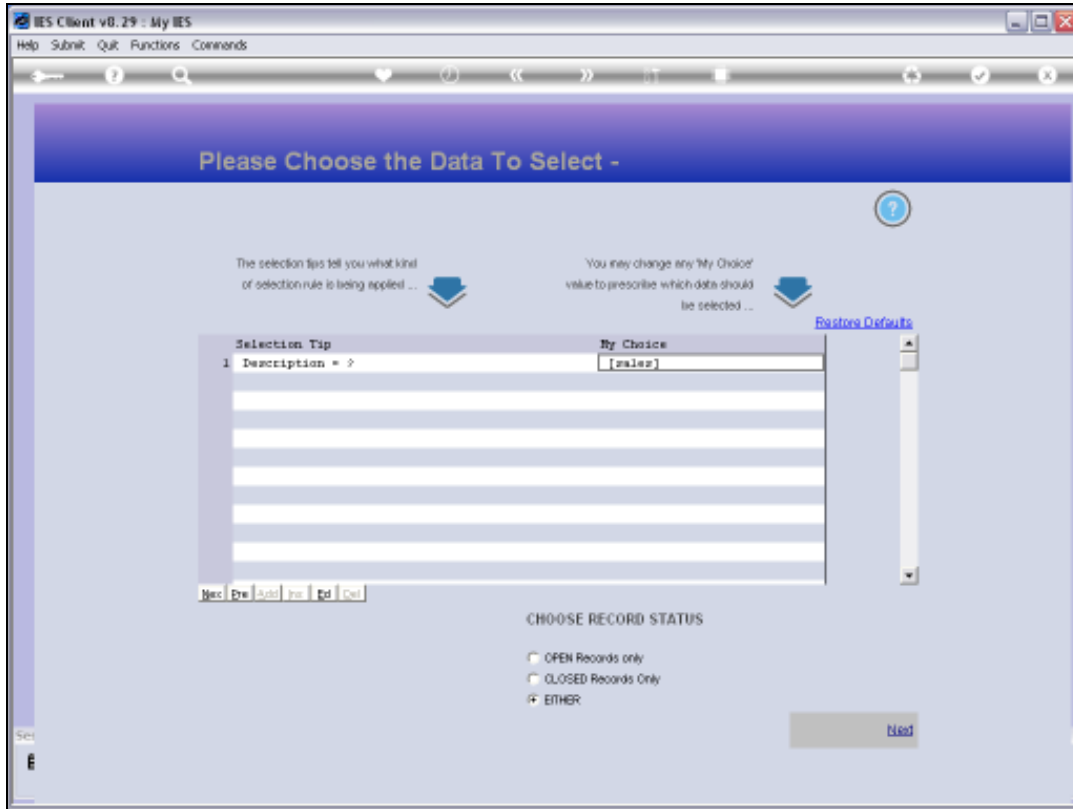


Slide 30

Slide notes: In our example, we use the method that finds Accounts by Name and we are looking for Accounts that include 'sales' in the Name.

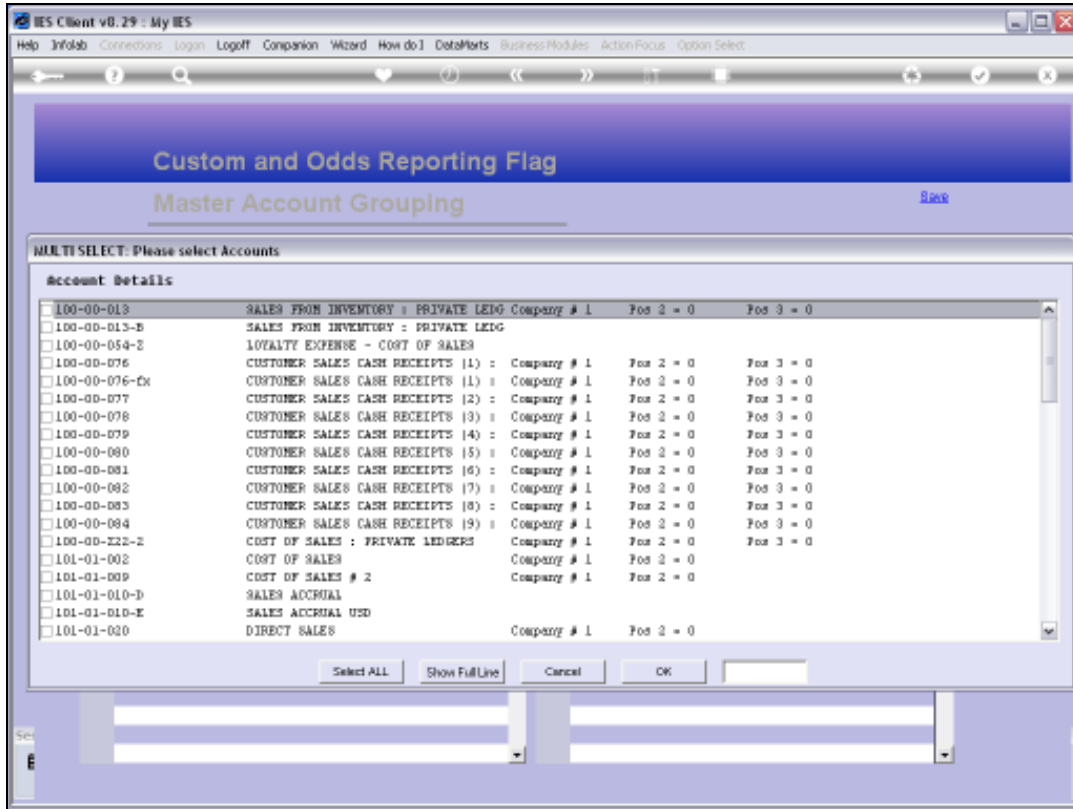


Slide 31  
Slide notes:

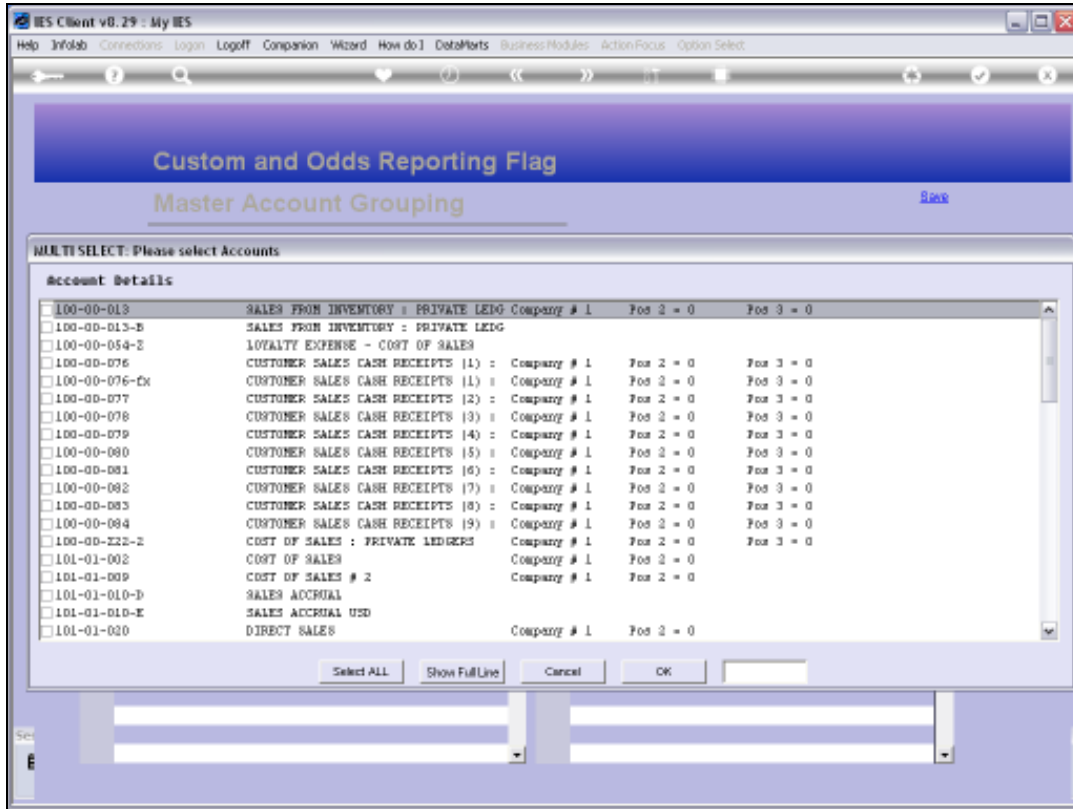


Slide 32  
Slide notes:

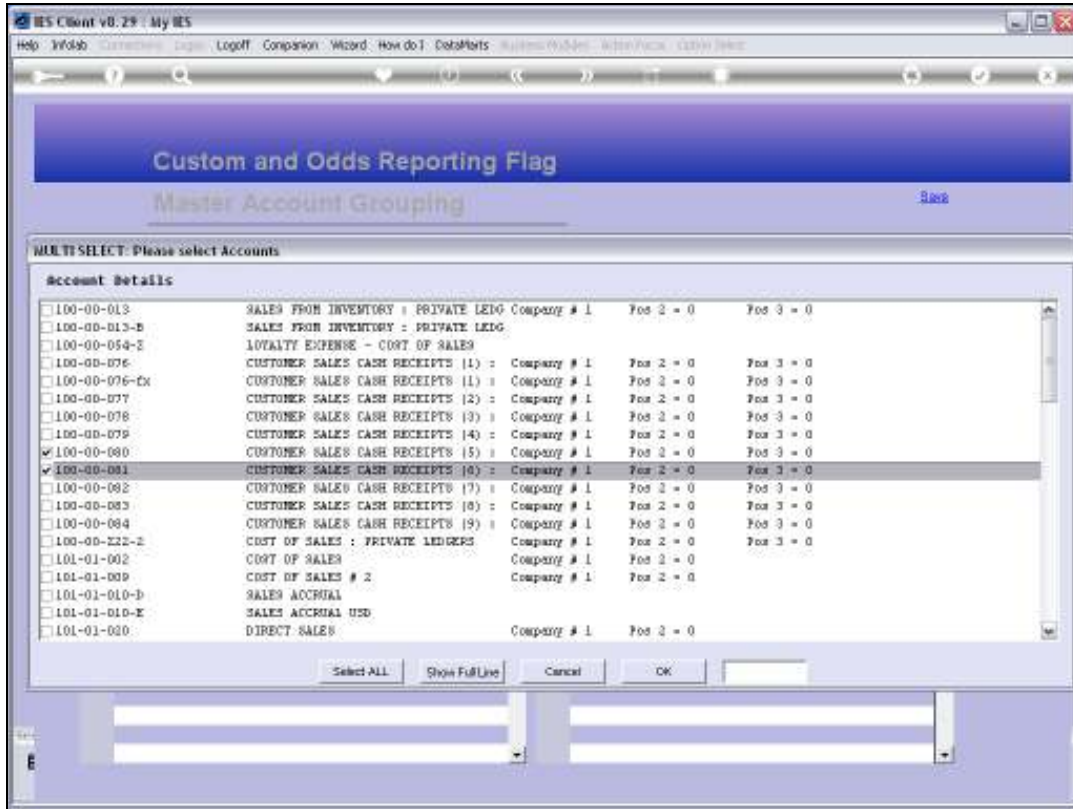




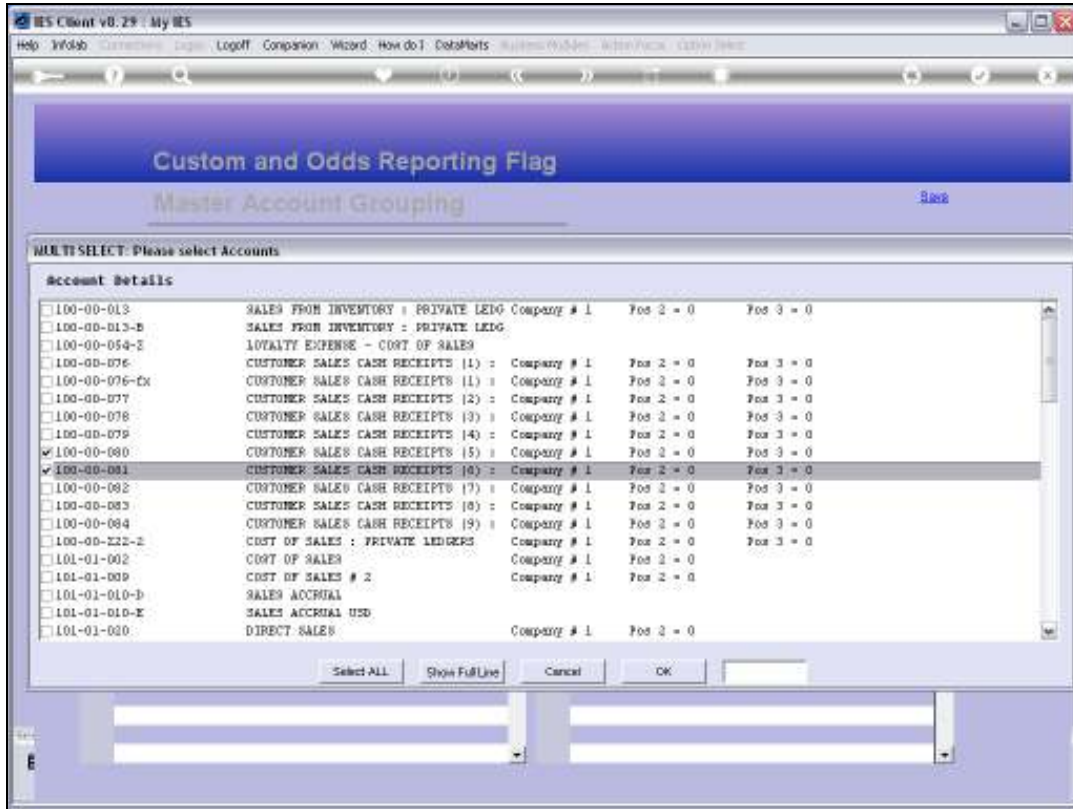
Slide 33  
Slide notes:



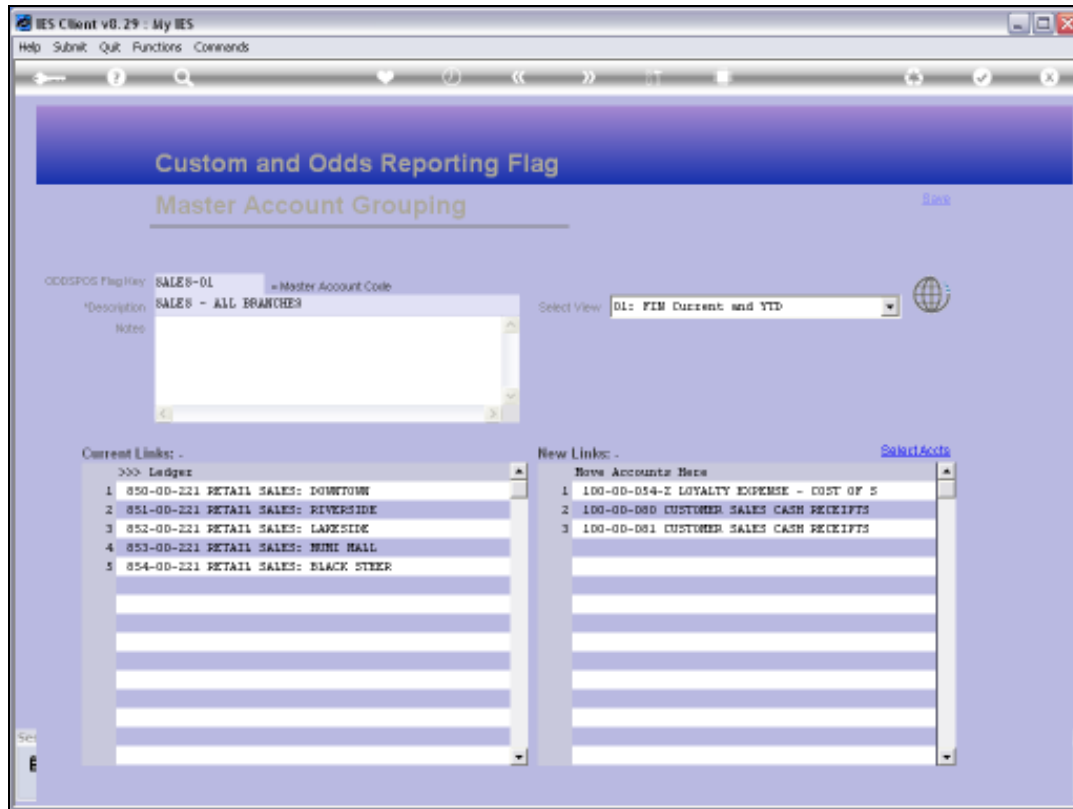
Slide 34  
Slide notes:



Slide 35  
Slide notes:



Slide 36  
Slide notes:



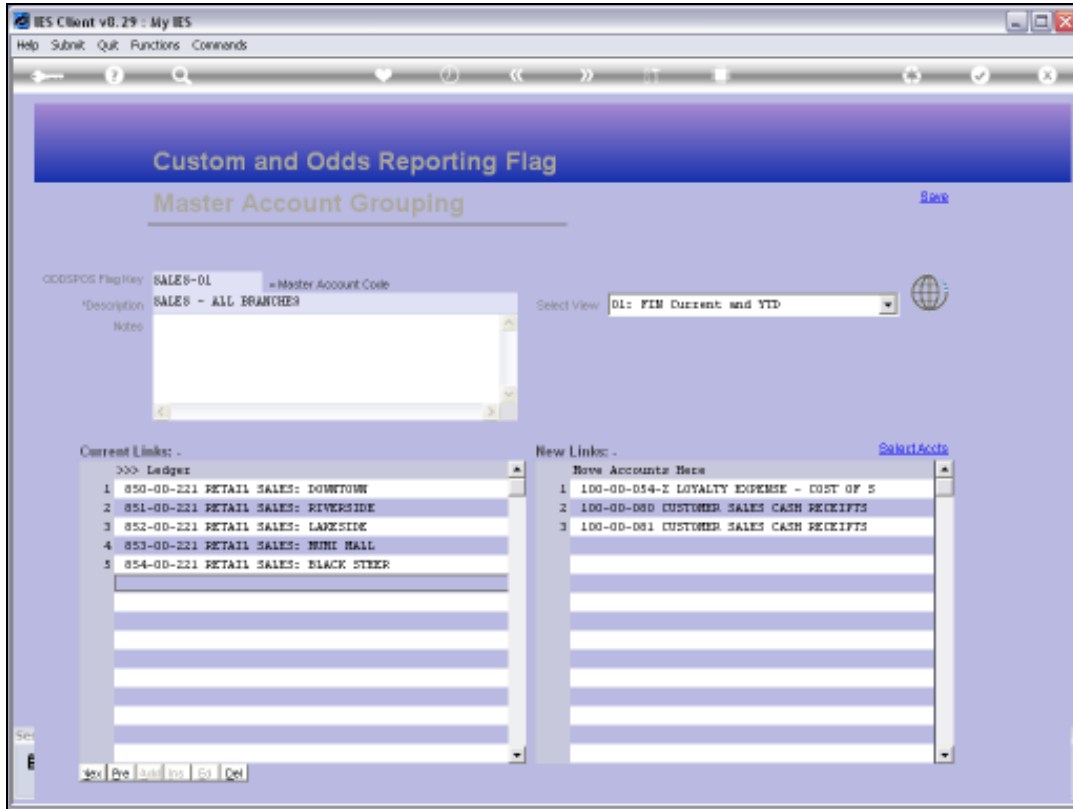
## Slide 37

Slide notes: If we choose to SAVE the Master Account, then any Accounts listed at 'New Links' will become part of the Master Account and when we open it again, will be listed at Current Links.

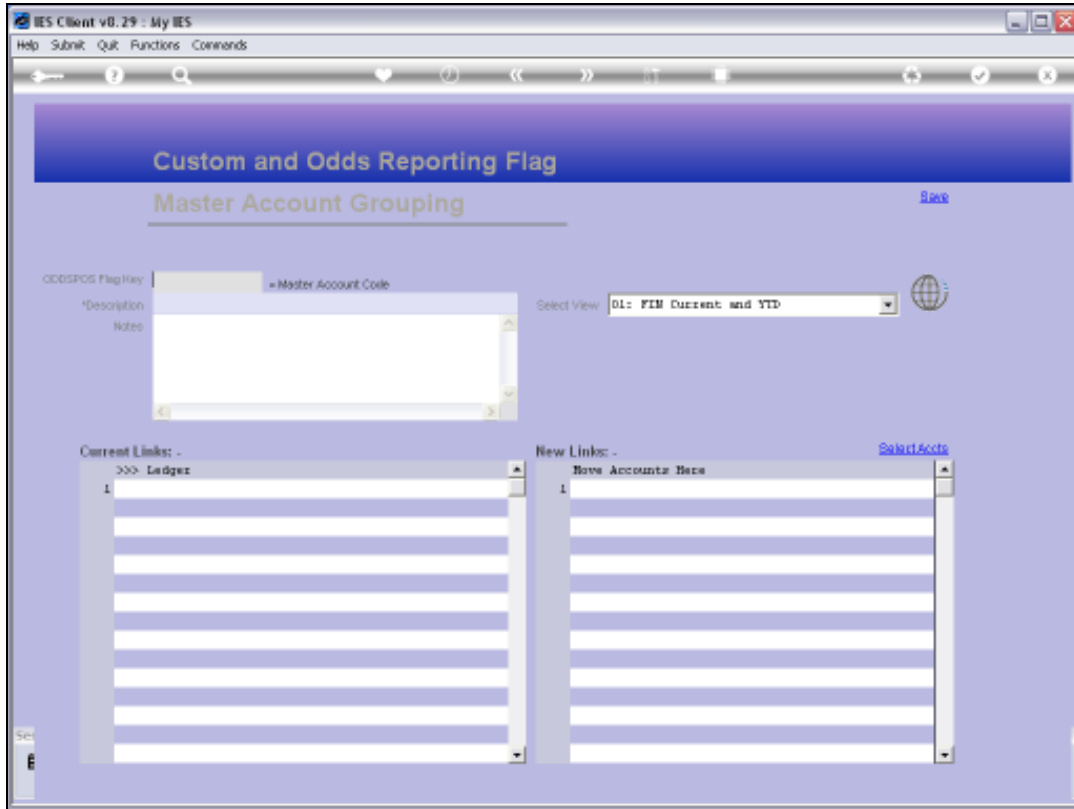


Slide 38

Slide notes:



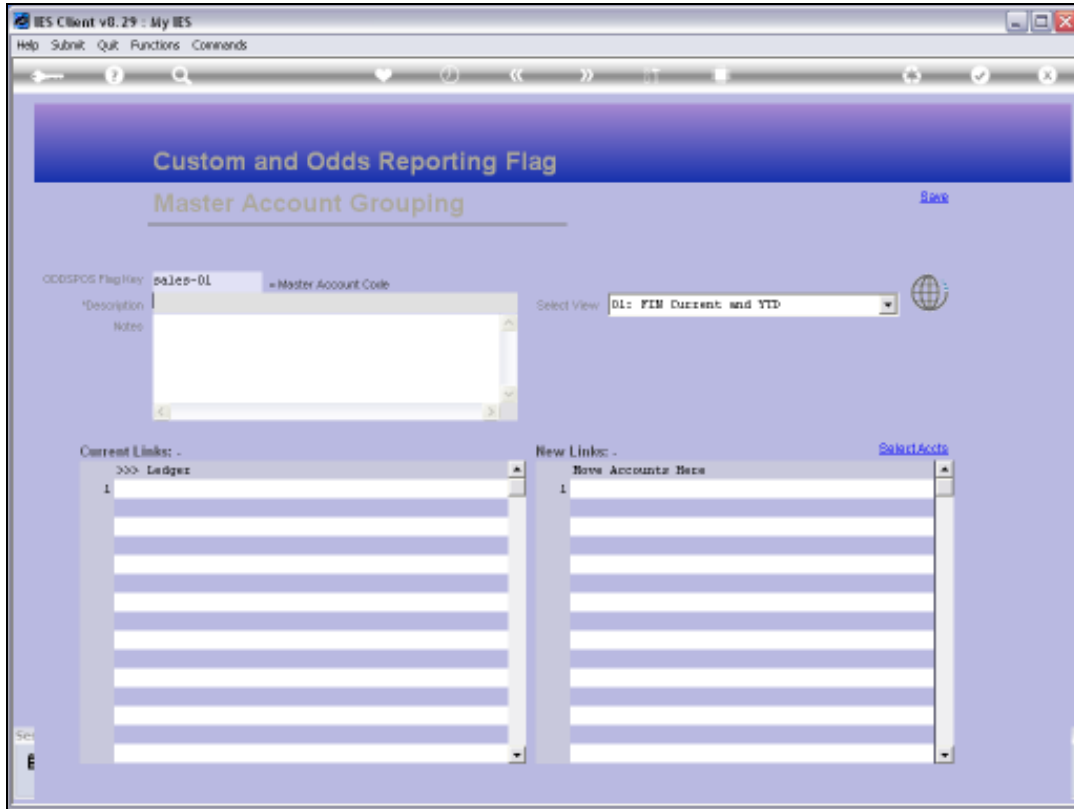
Slide 39  
Slide notes:



Slide 40

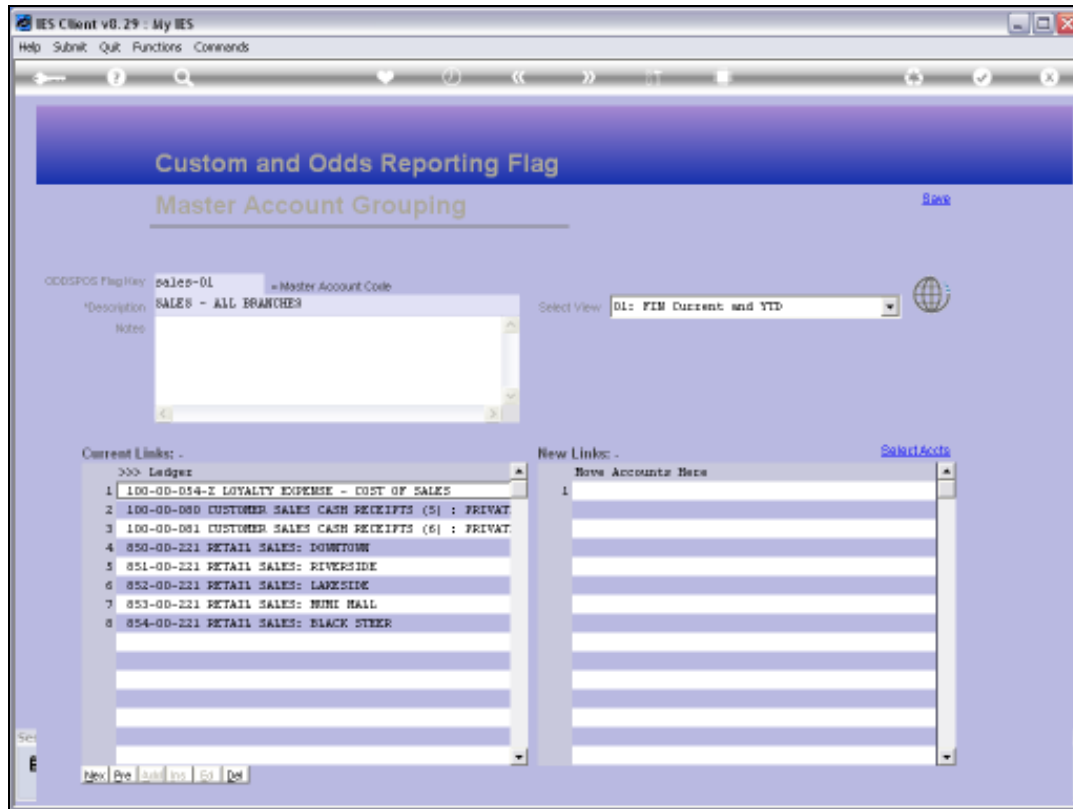
Slide notes:





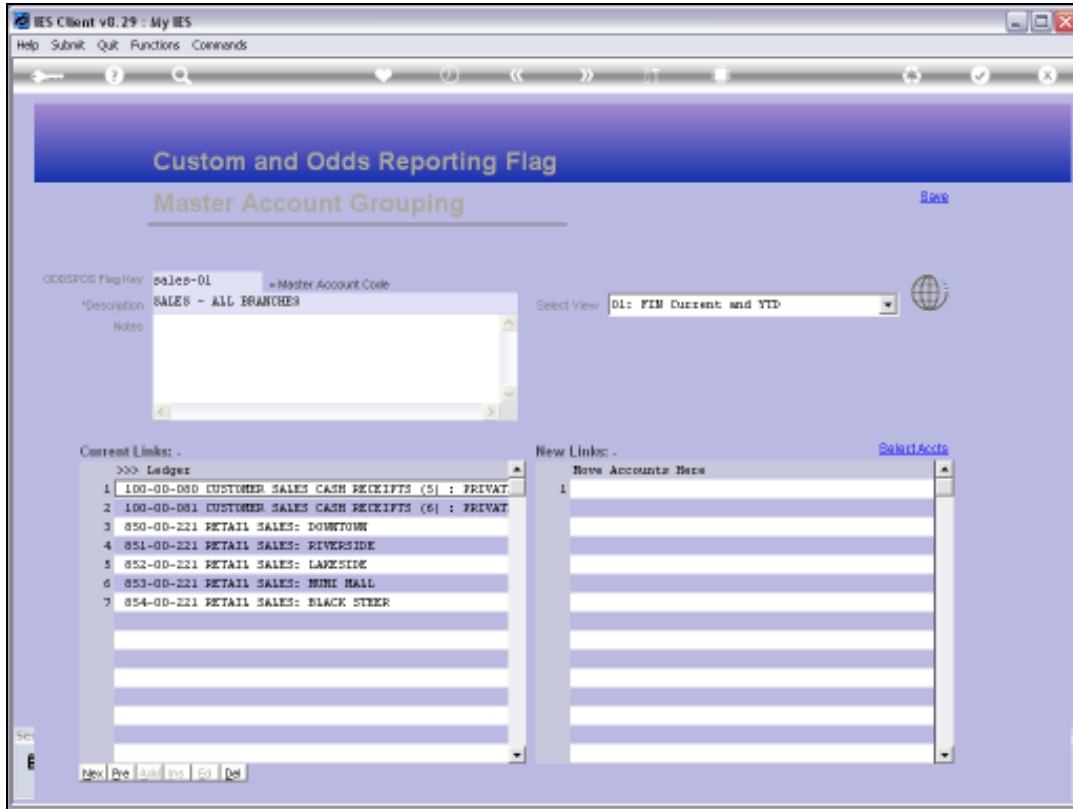
Slide 41

Slide notes:



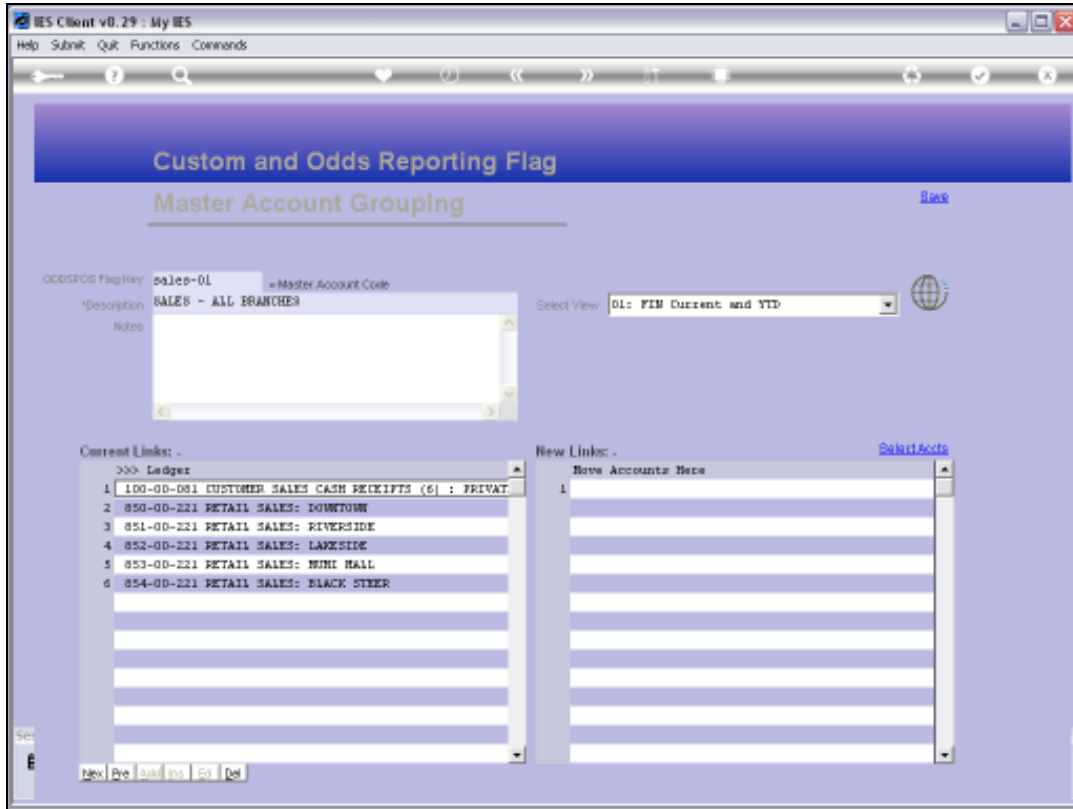
Slide 42

Slide notes: Now, as we can see, the new additions are listed here at Current Links. We can also remove GL Accounts from the Master Account right here, by deleting them from the Current Links and saving the Master Account.

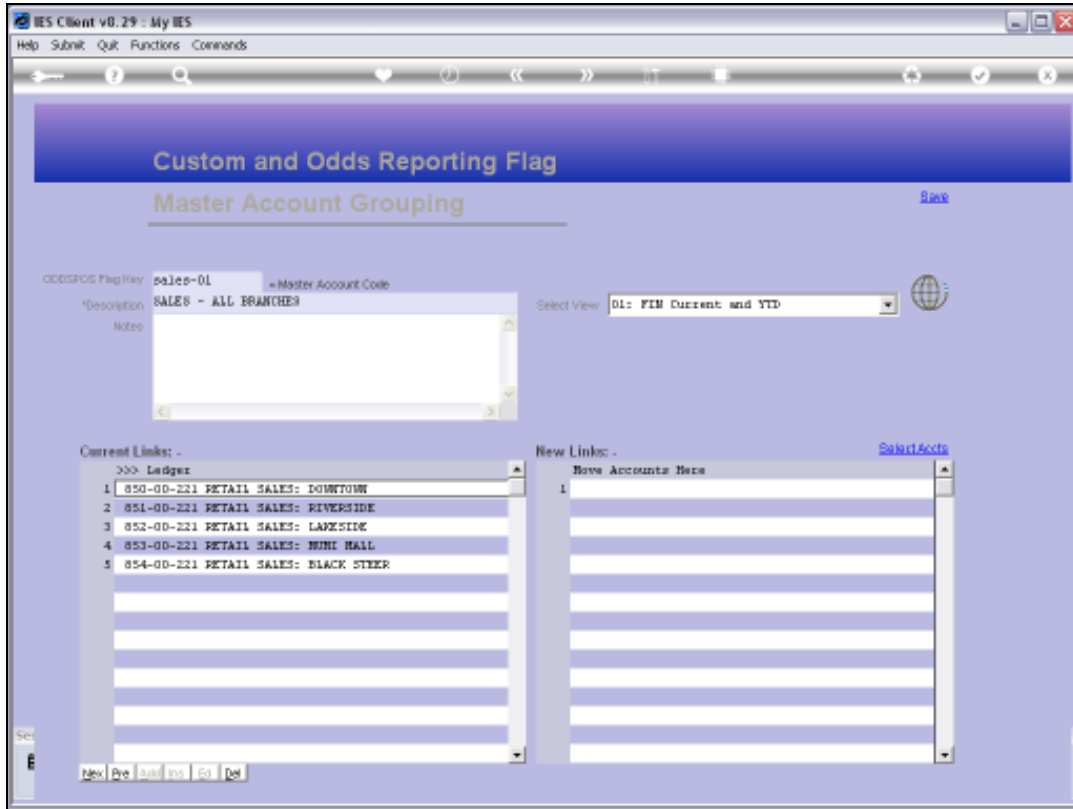


Slide 43

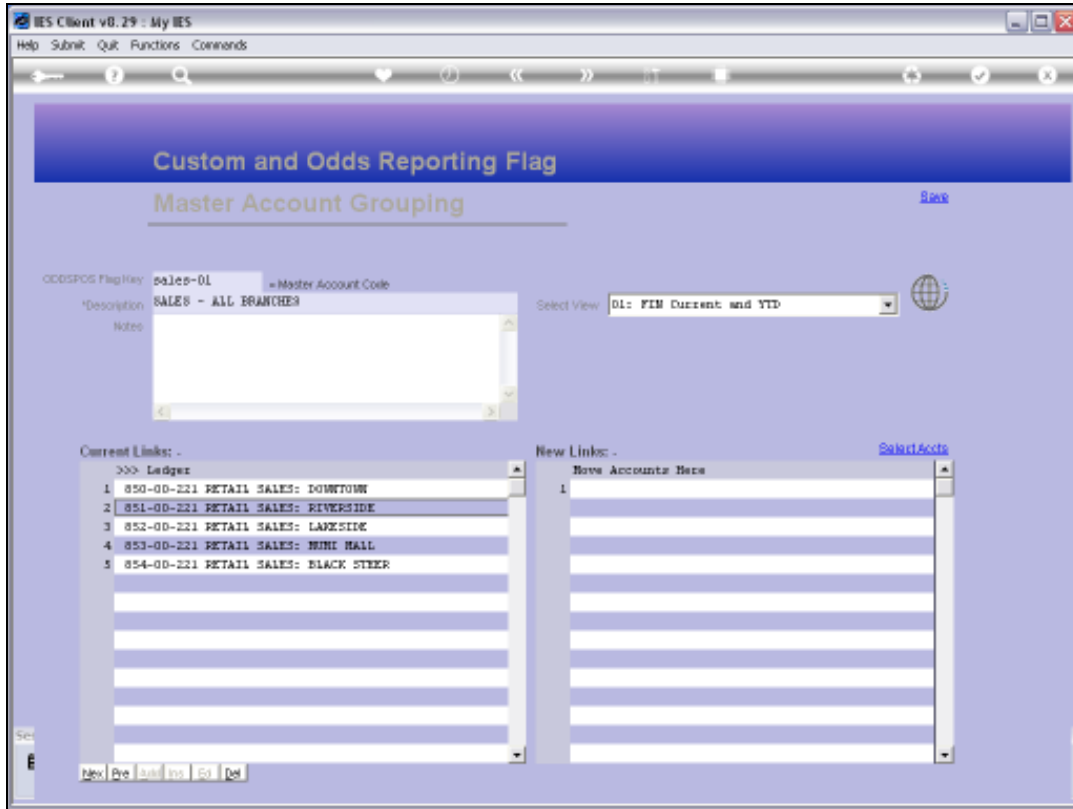
Slide notes:



Slide 44  
Slide notes:



Slide 45  
Slide notes:

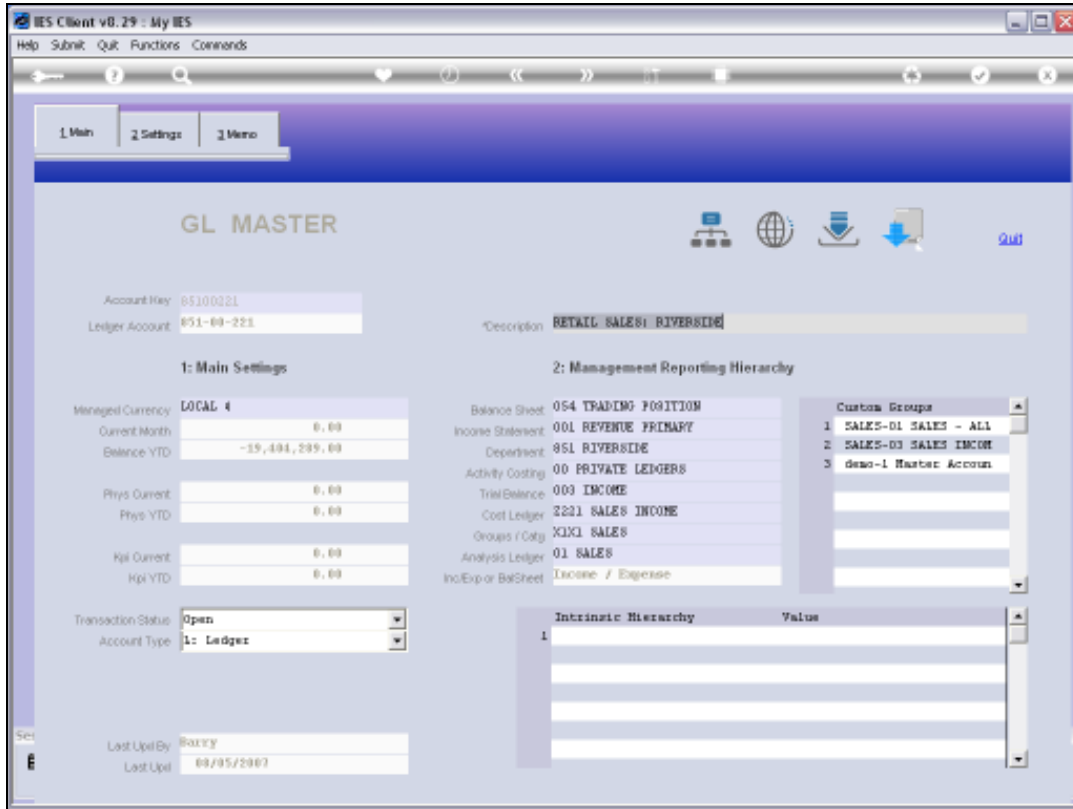


Slide 46

Slide notes: Any Account listed at Current Links has the Key for this Master Account listed on the GL Account itself, at Custom Flags.

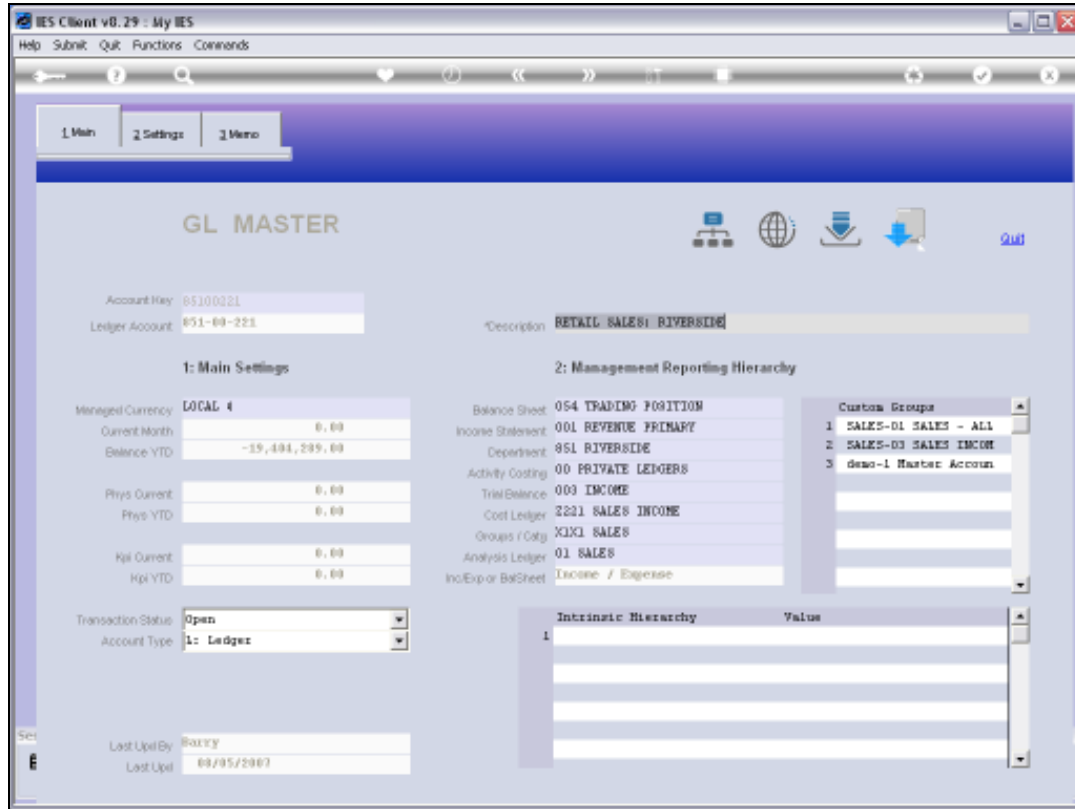


Slide 47  
Slide notes:



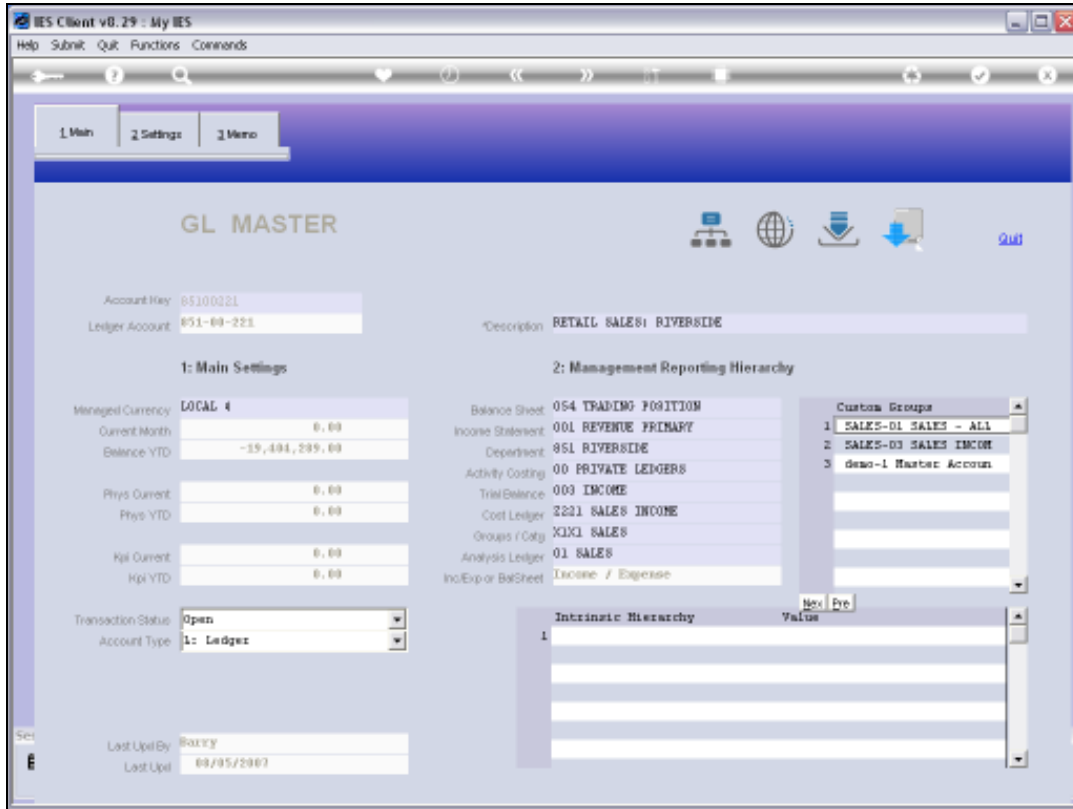
Slide 48  
Slide notes:





Slide 49

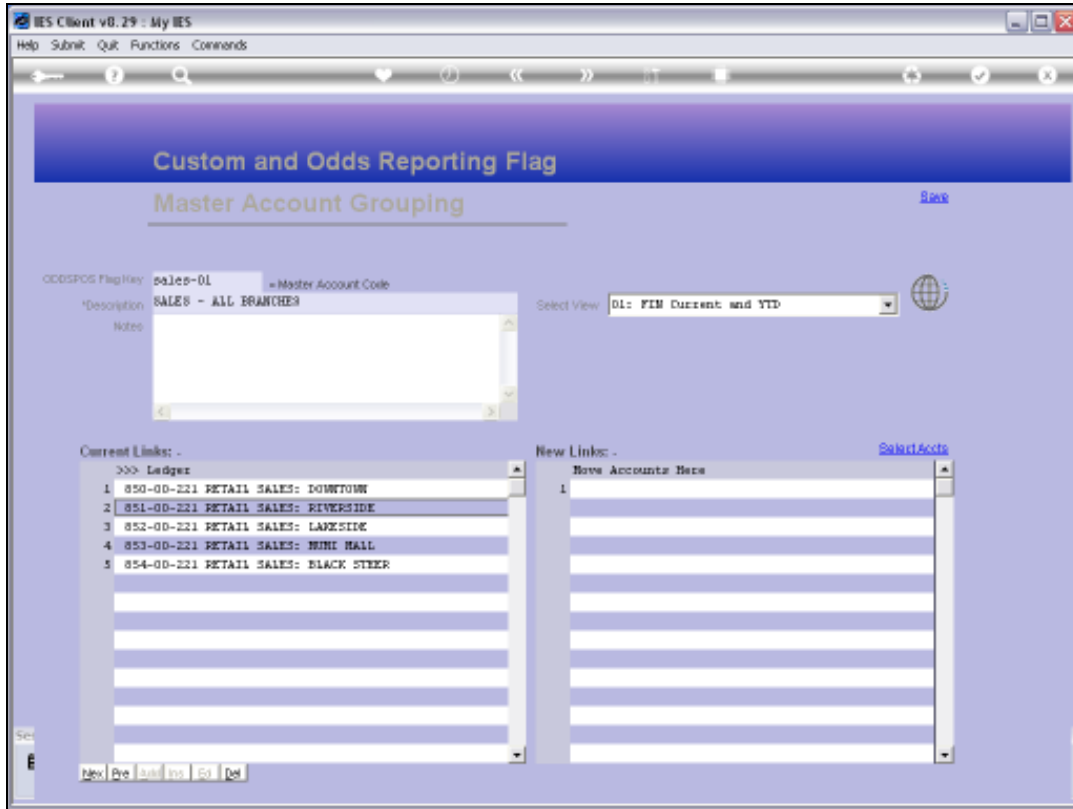
Slide notes: If we should drill into any of the GL Accounts, we can see the Master Account, also a Custom Report Flag, listed here.



Slide 50  
Slide notes:



Slide 51  
Slide notes:



Slide 52

Slide notes: So this is how we may easily create new, and maintain current Master Accounts, which are also at the same time Odds and Custom Report Flags.



Slide 53

Slide notes: