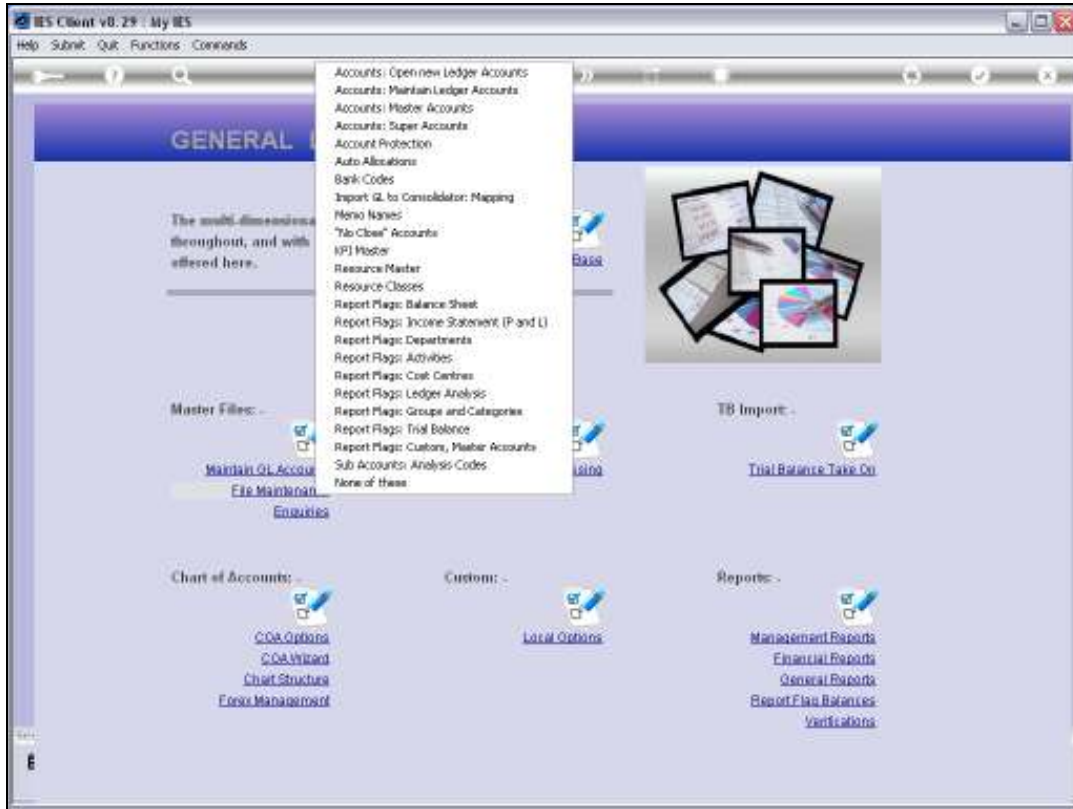


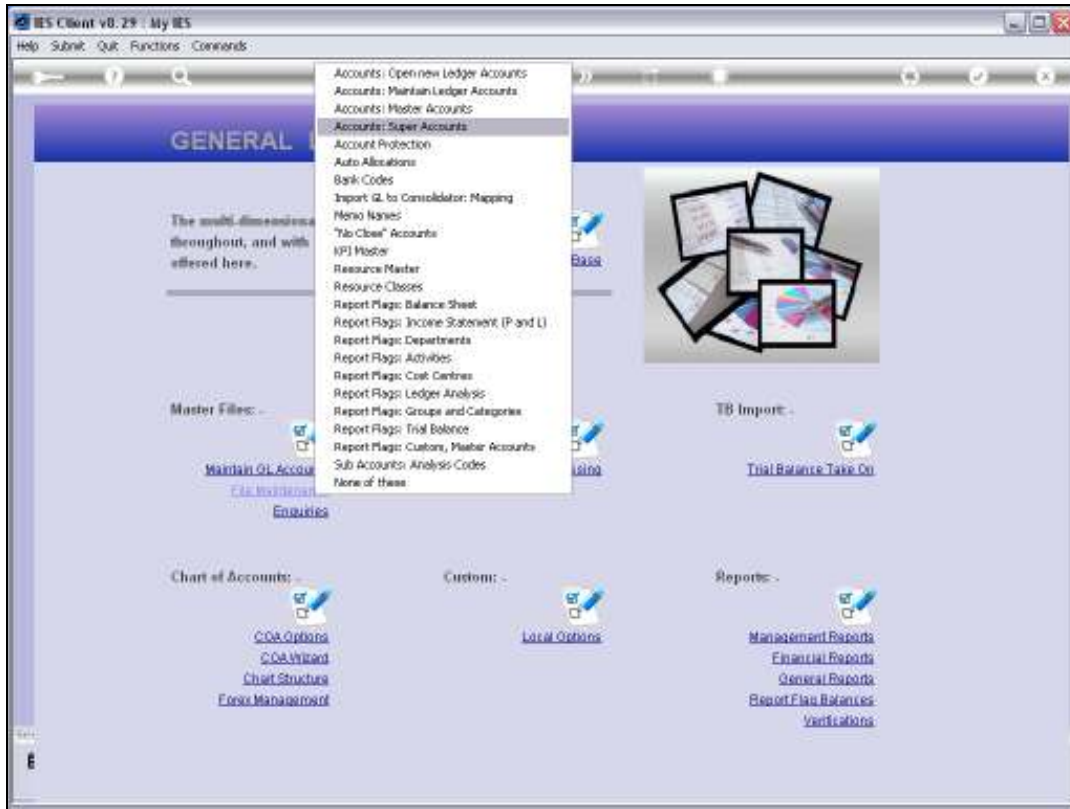


Slide 1

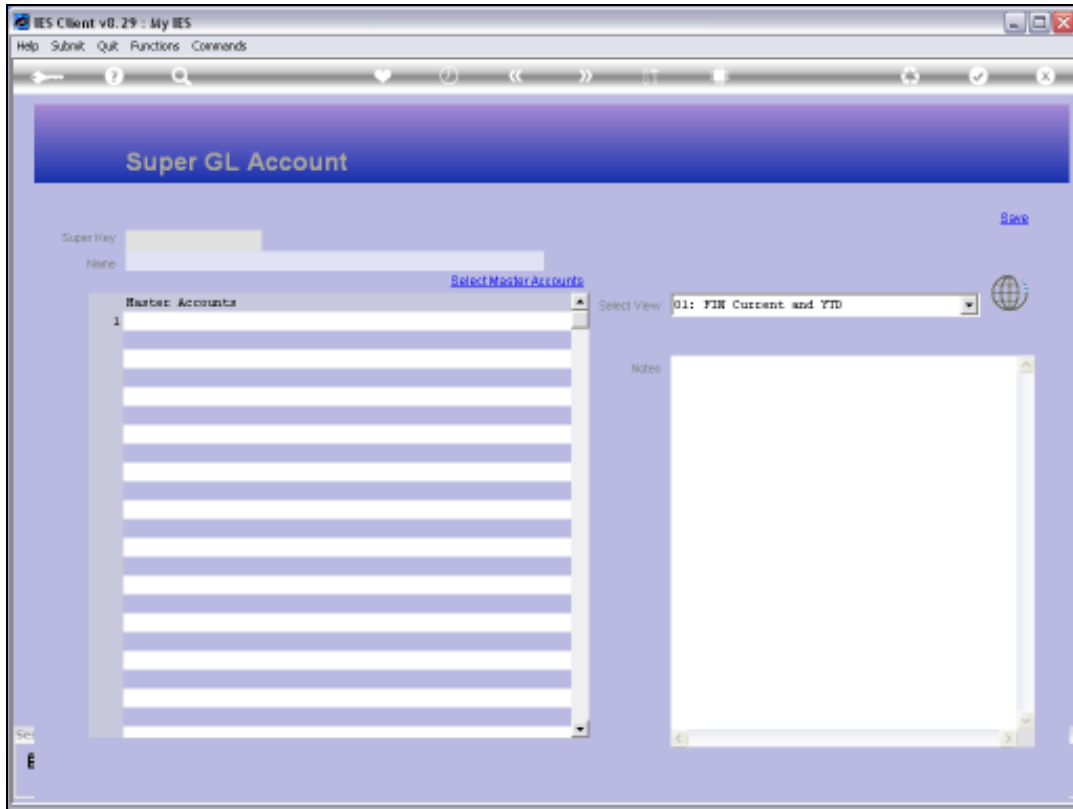
Slide notes: Super Accounts can be managed from the Ledger File Maintenance menu.



Slide 2
Slide notes:

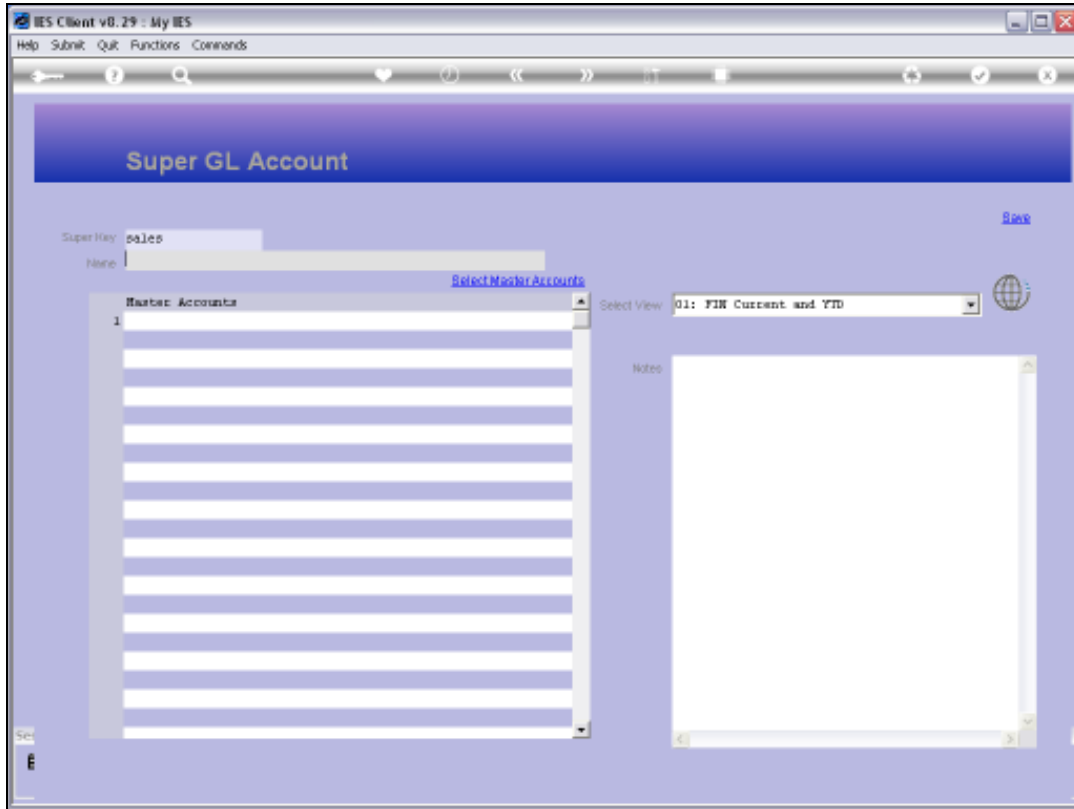


Slide 3
Slide notes:

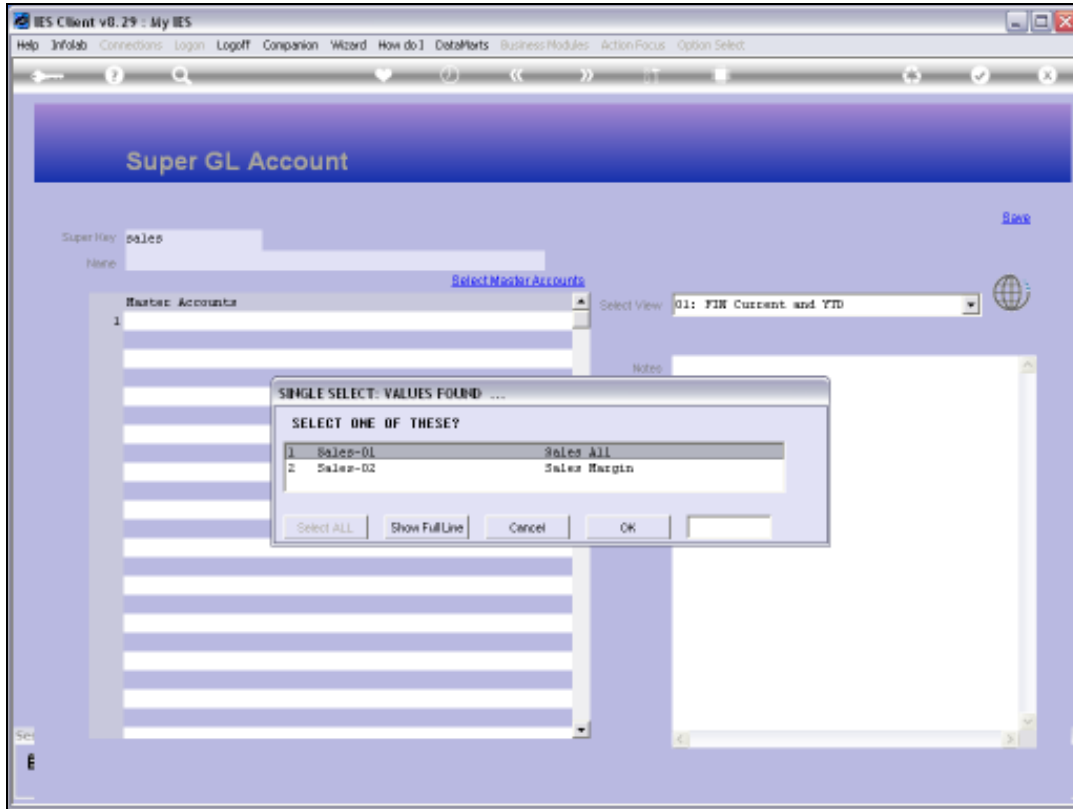


Slide 4

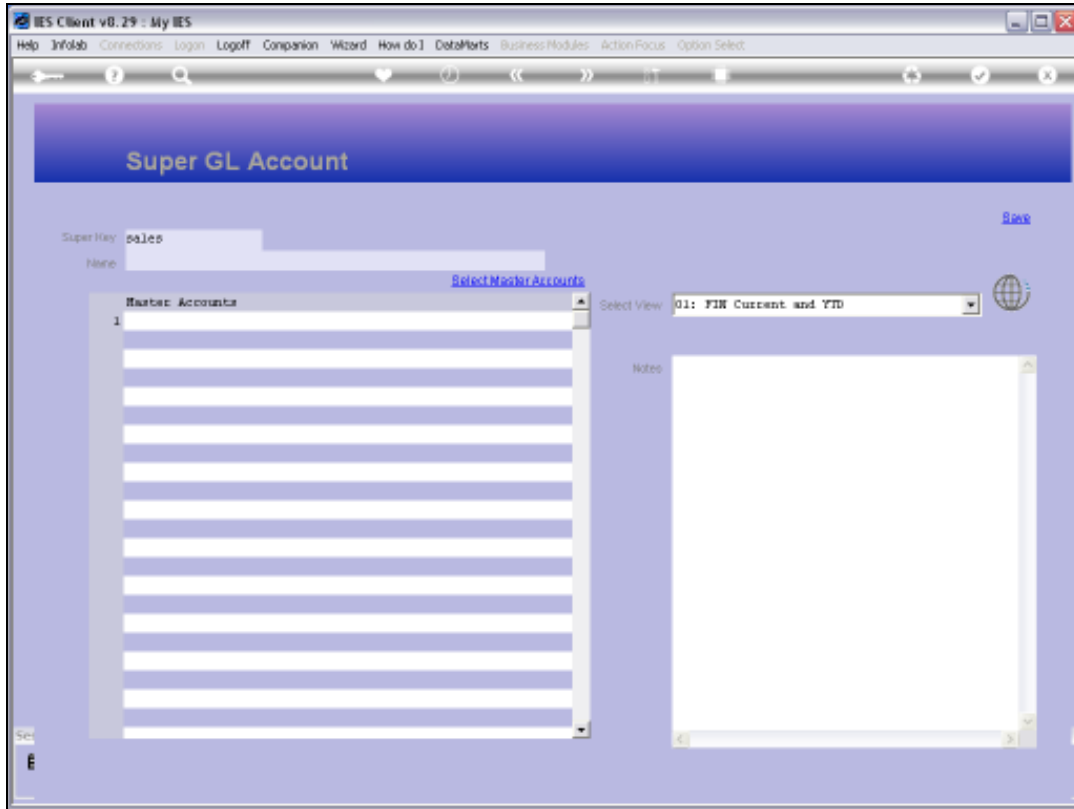
Slide notes: The usual lookup options are available for retrieving current Super Accounts, or else we can specify a new Key to create a new Super Account.



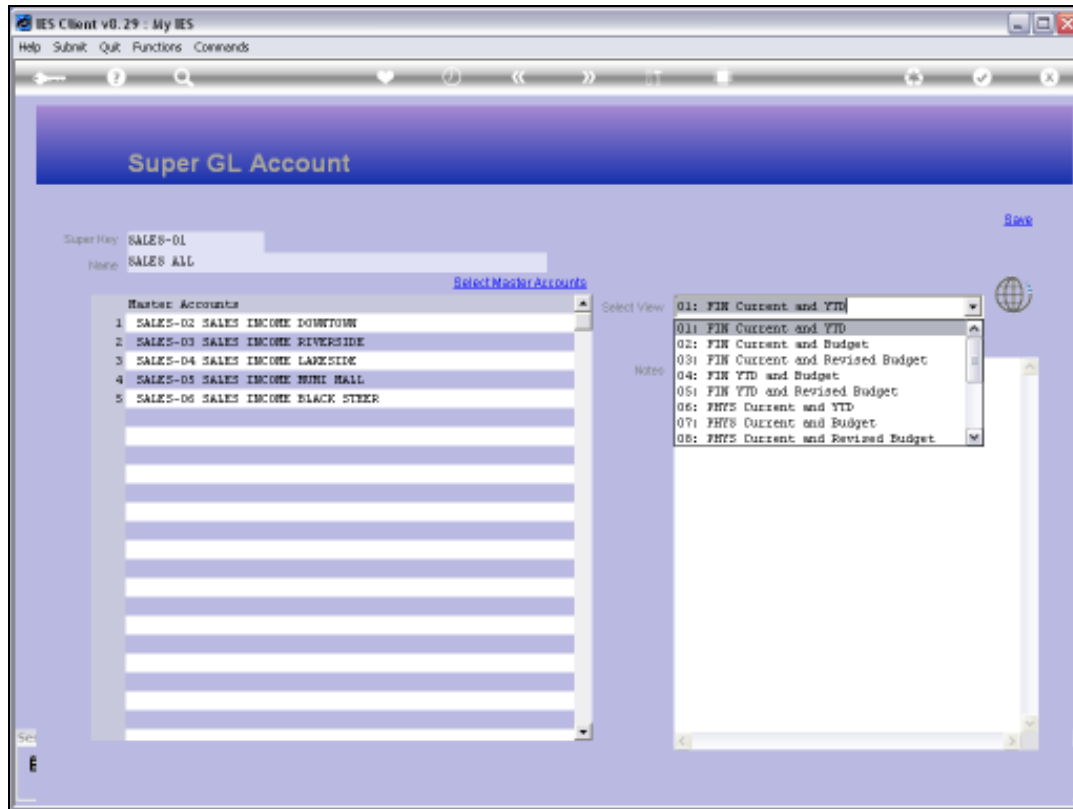
Slide 5
Slide notes:



Slide 6
Slide notes:

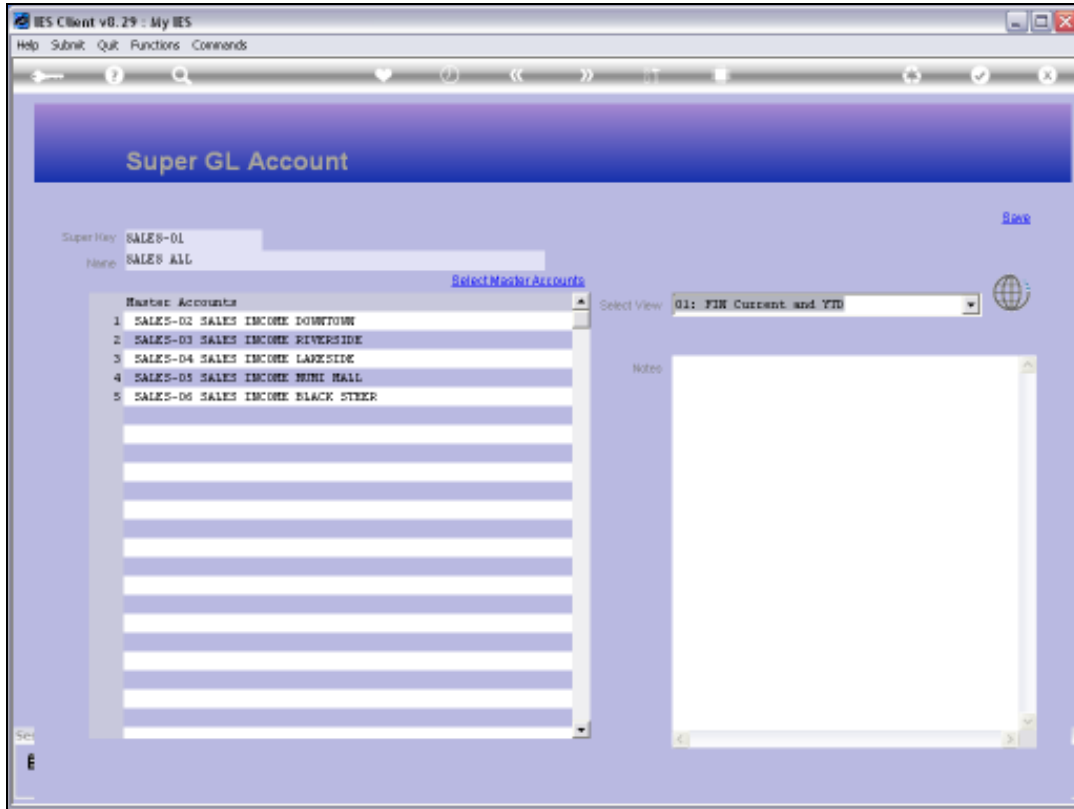


Slide 7
Slide notes:

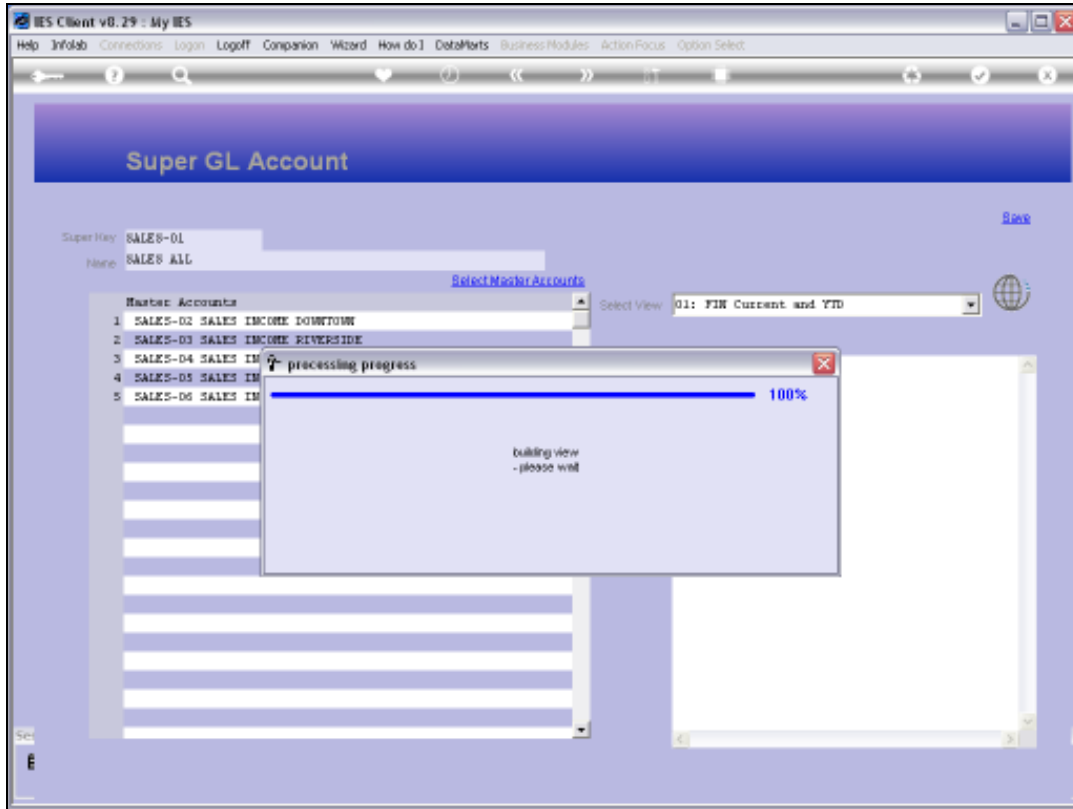


Slide 8

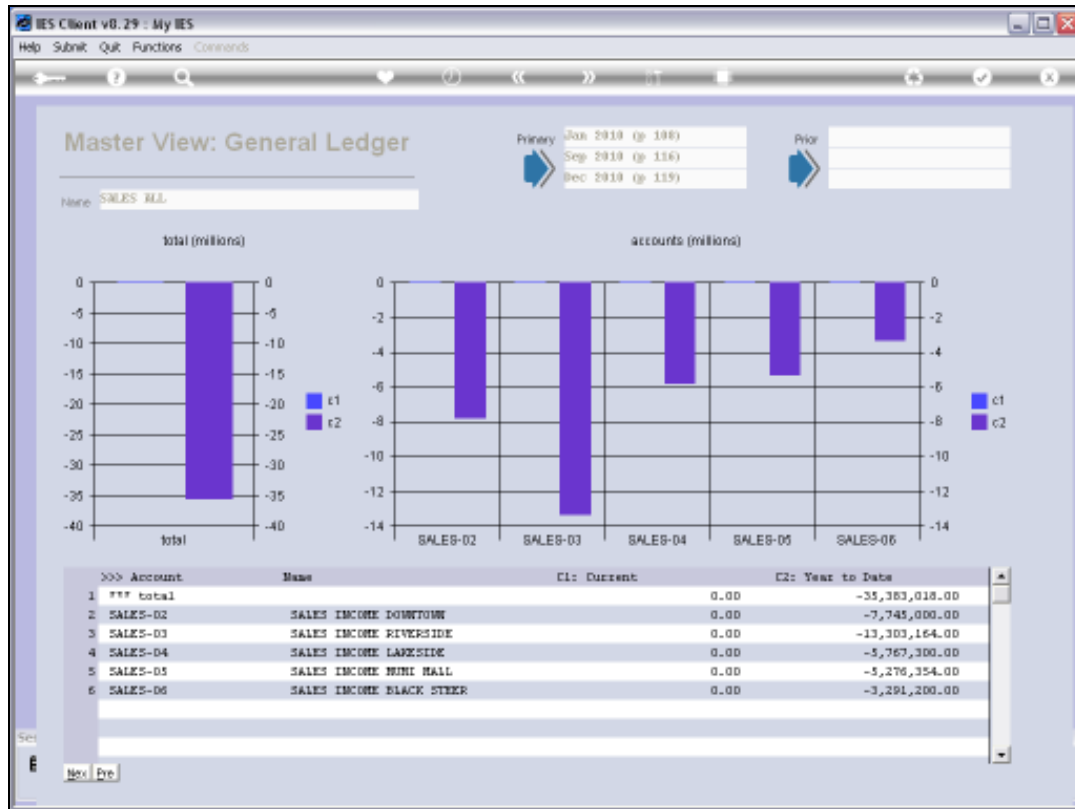
Slide notes: A Super Account is a powerful information tool, and can include any number of Master Accounts, while each Master Account can in turn include any number of GL Accounts. As such, a Super Account has the capability to provide 'top of the pyramid' type information, and from this screen we have a direct Business Intelligence entry point for the Super Account.



Slide 9
Slide notes:

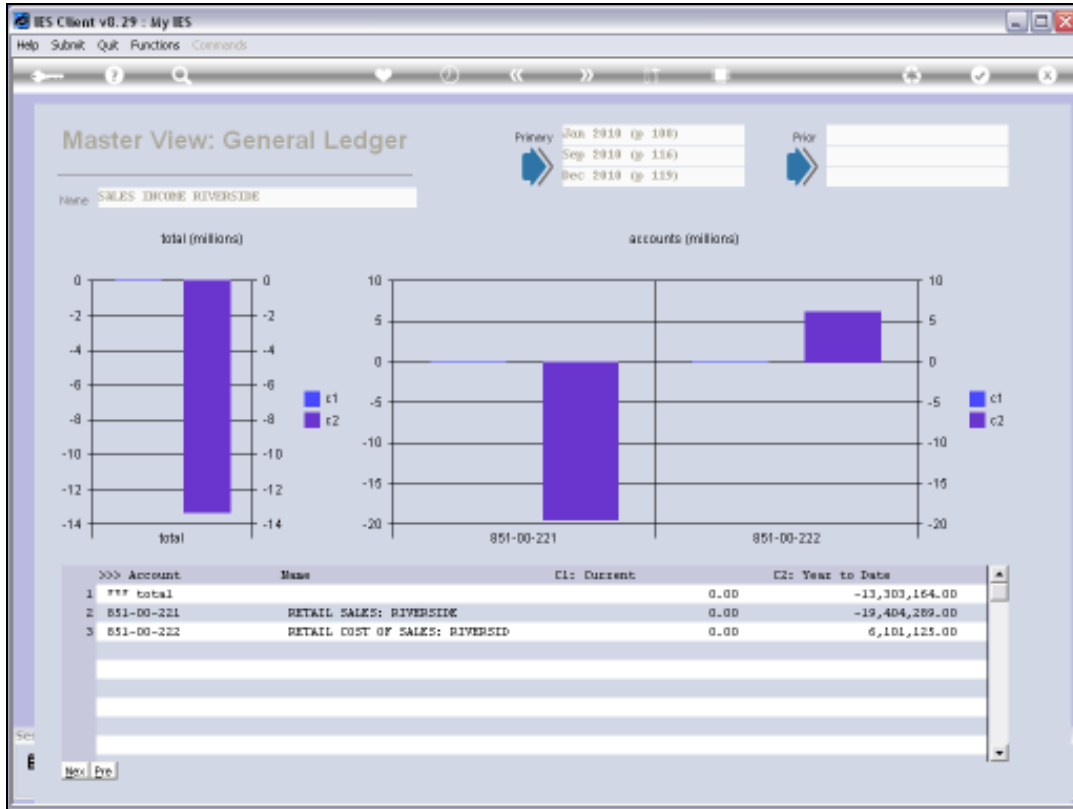


Slide 10
Slide notes:



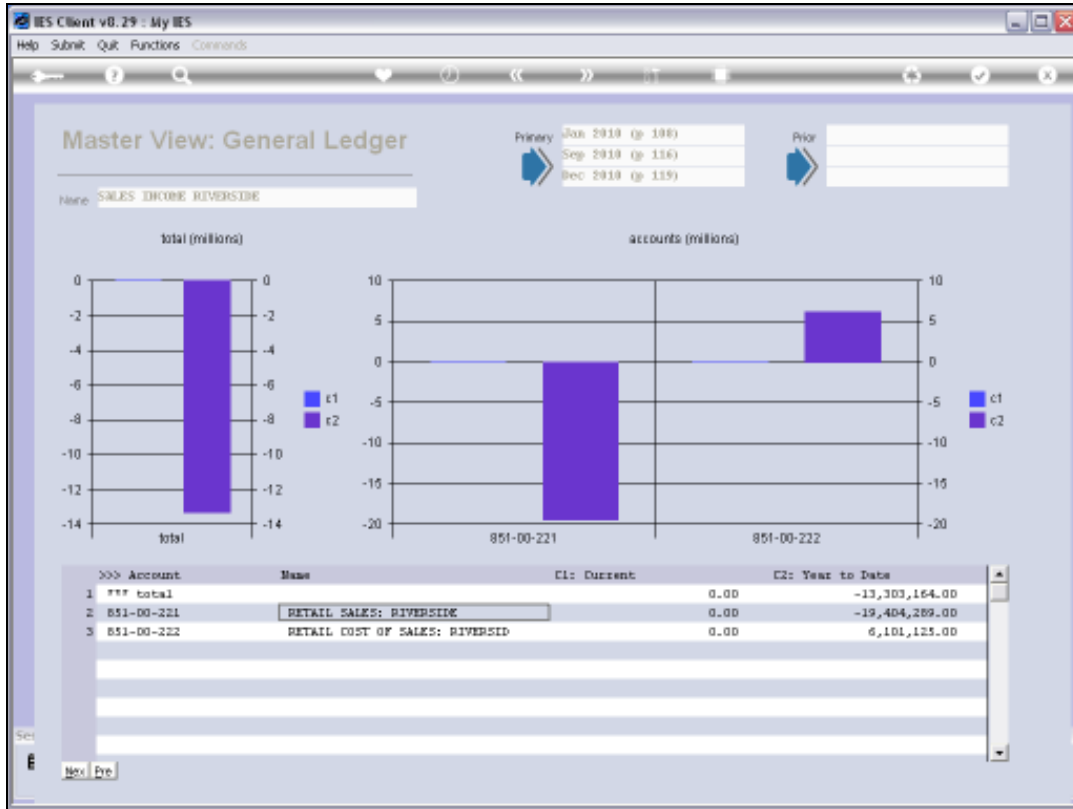
Slide 11

Slide notes: On this view provided by the Super Account, we can also drill into the underlying Master Account views.



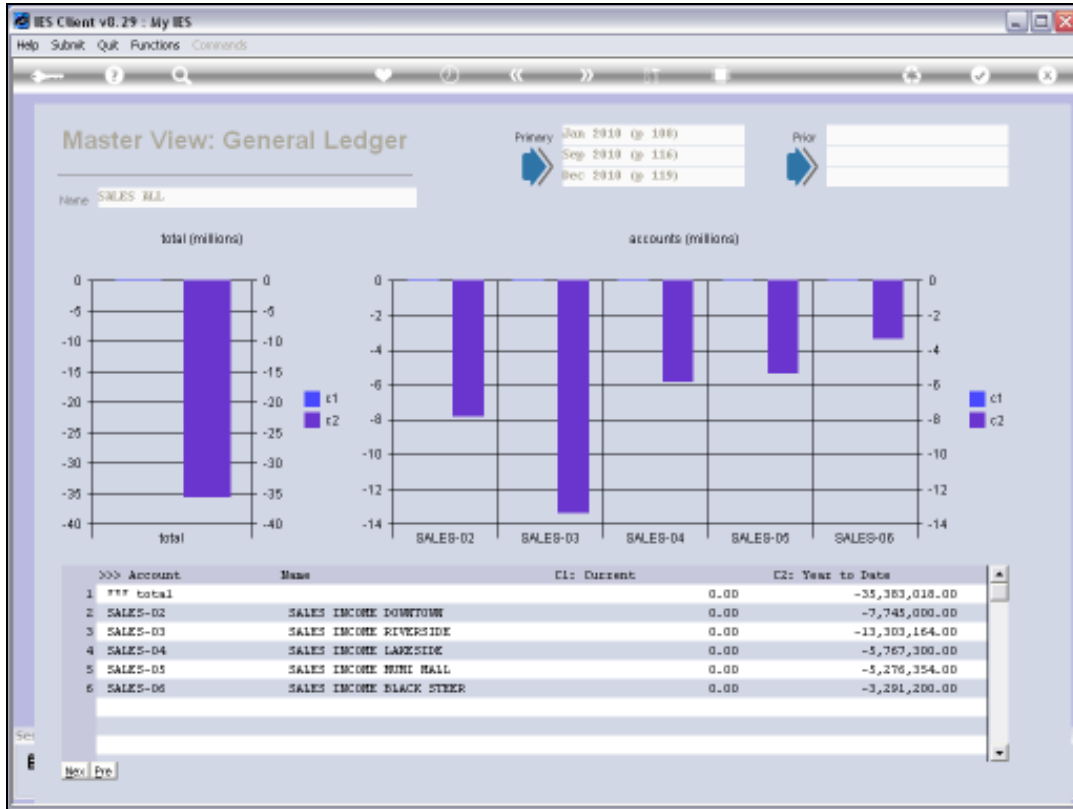
Slide 12

Slide notes: And at the Master Account View, we still have the option to drill into the underlying GL Accounts.

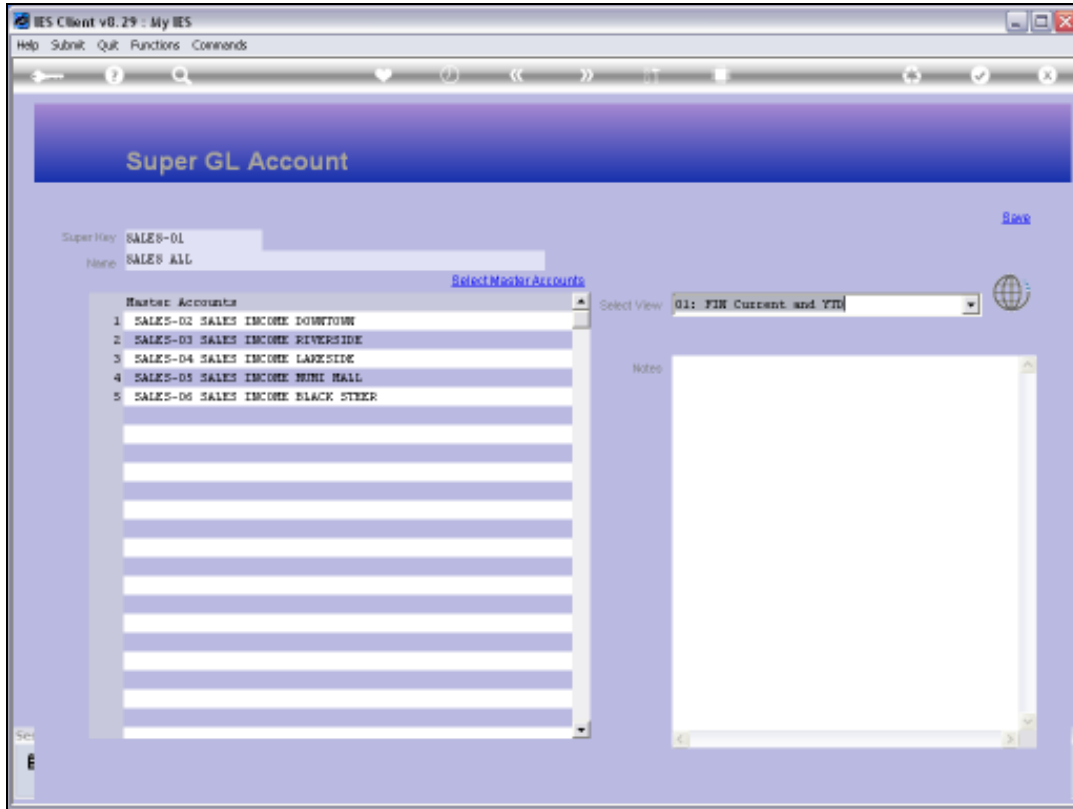


Slide 13

Slide notes:

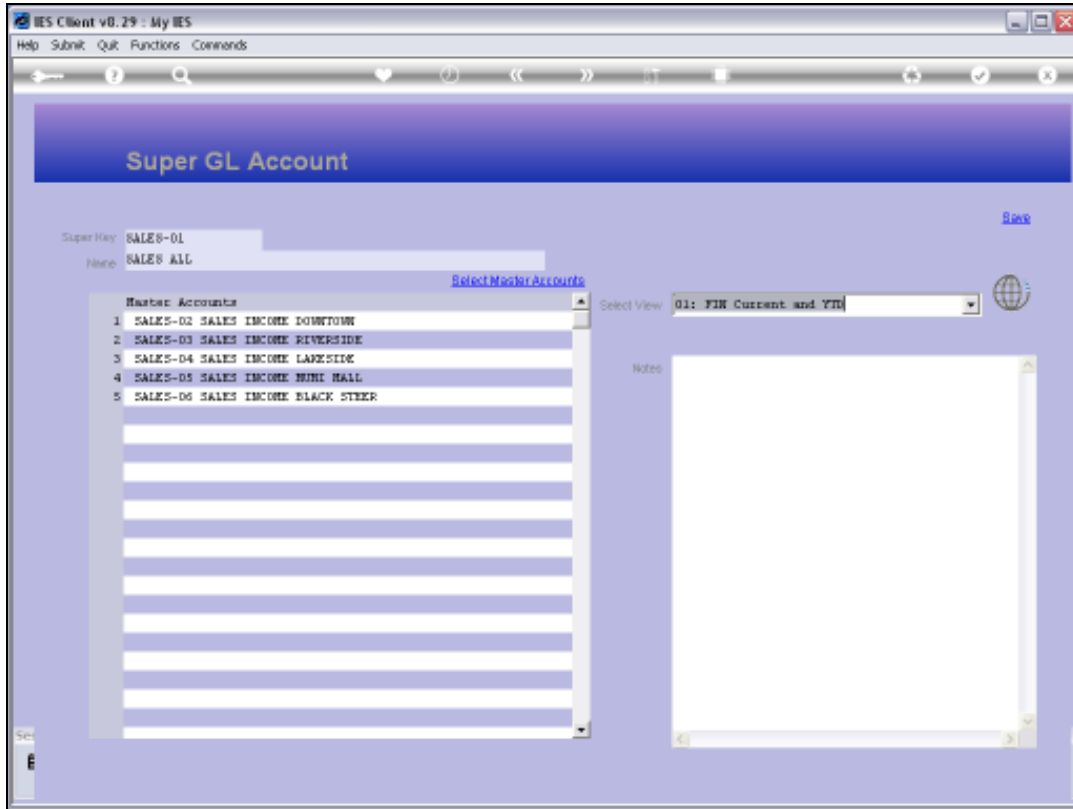


Slide 14
 Slide notes:



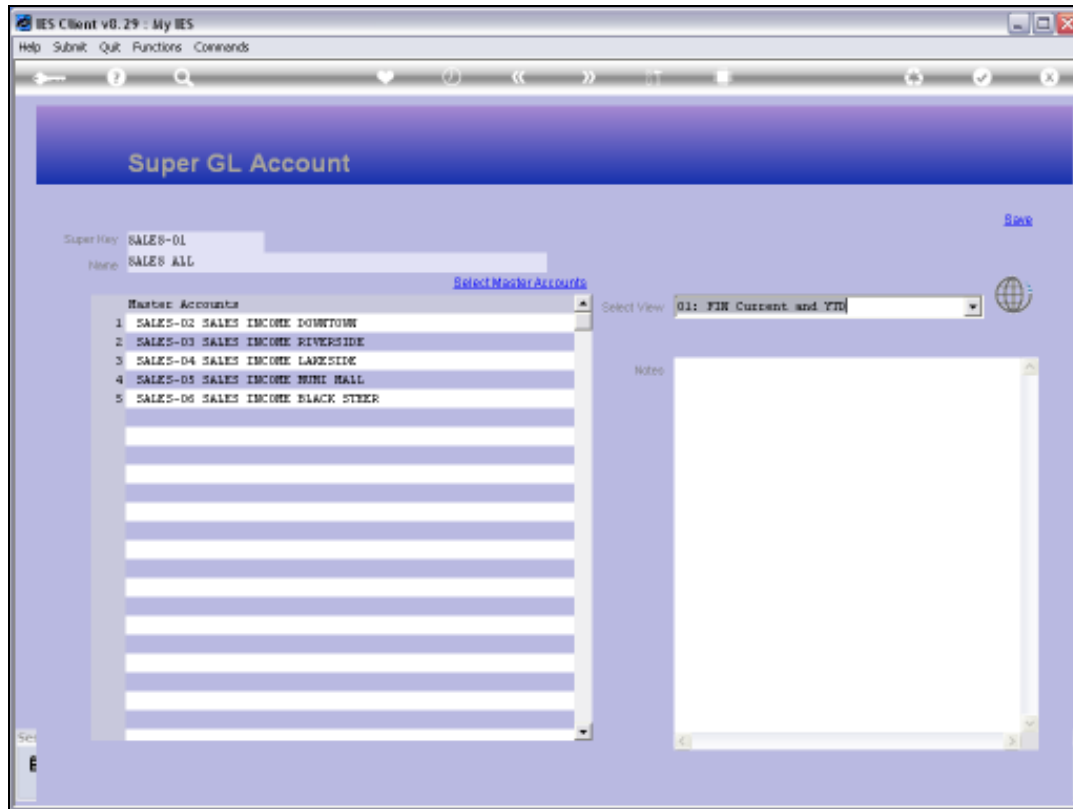
Slide 15

Slide notes:



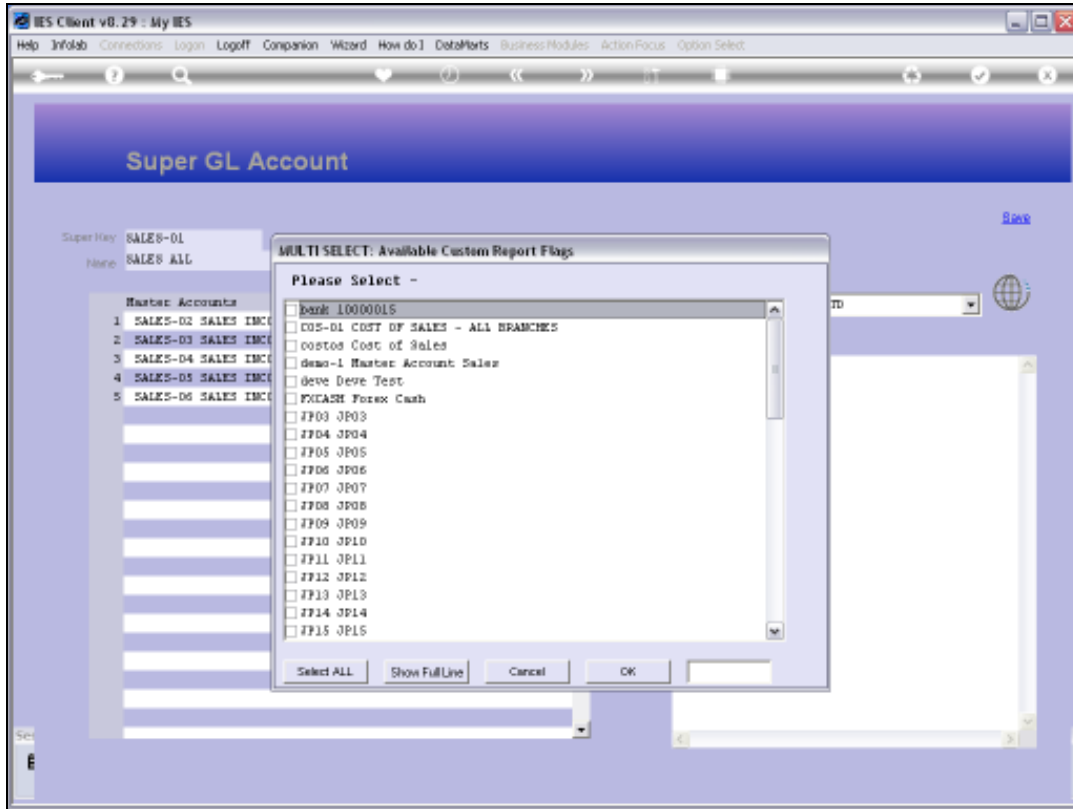
Slide 16

Slide notes:



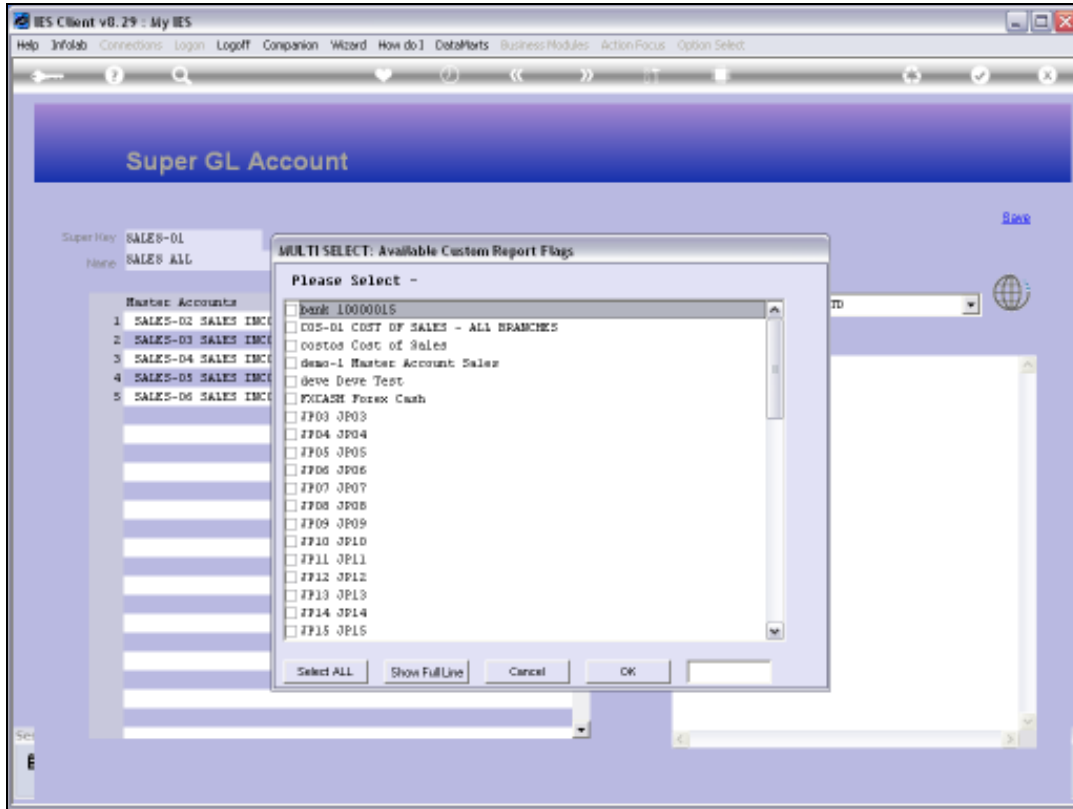
Slide 17

Slide notes: We can use the 'Select Master Accounts' function to select Master Accounts to include in this Super Account. Master Accounts can be included in any number of Super Accounts without restriction.

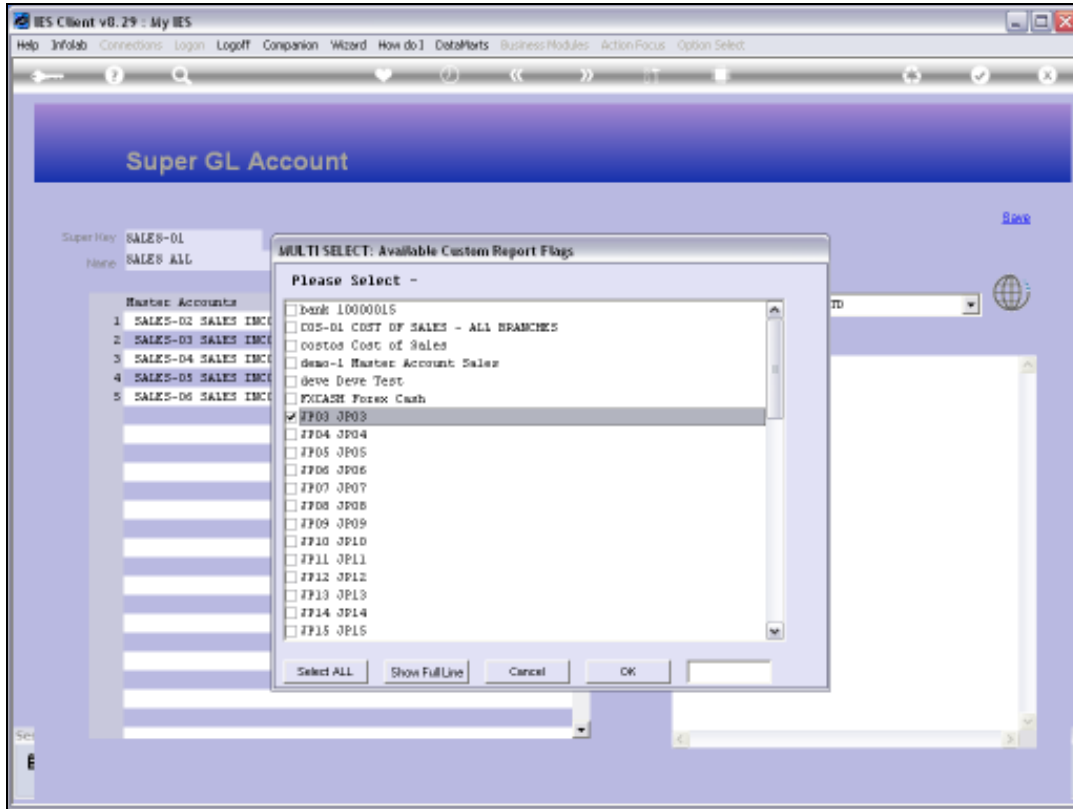


Slide 18

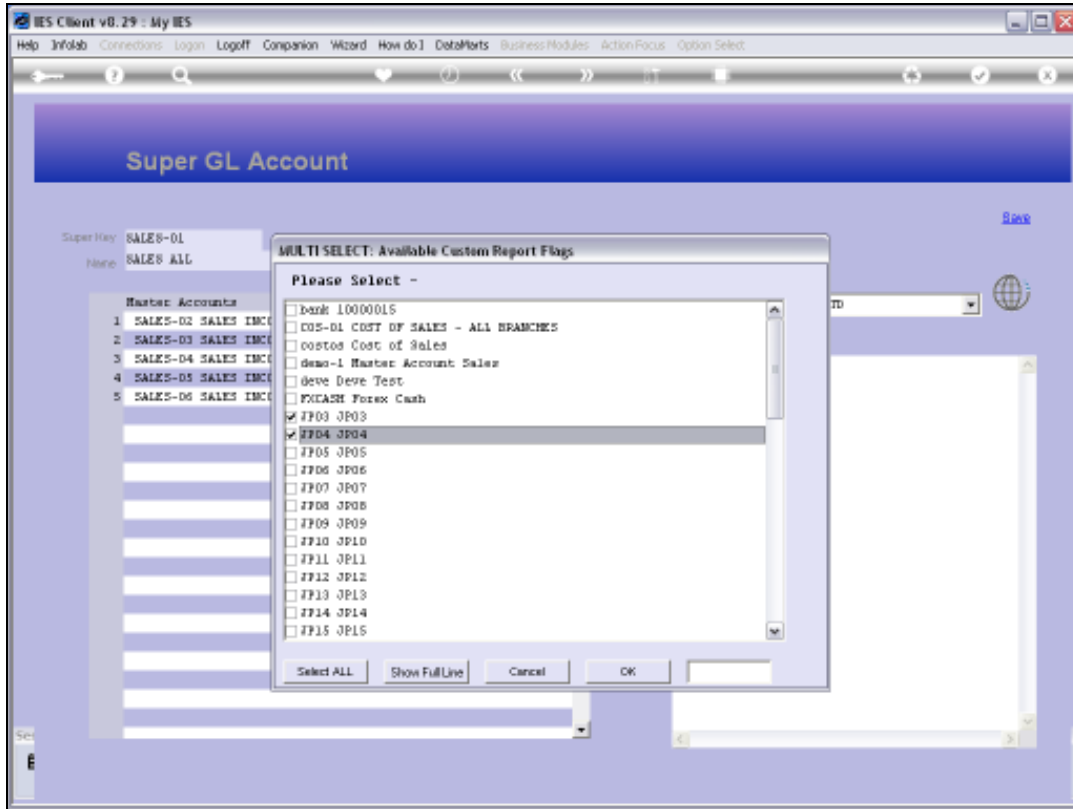
Slide notes:



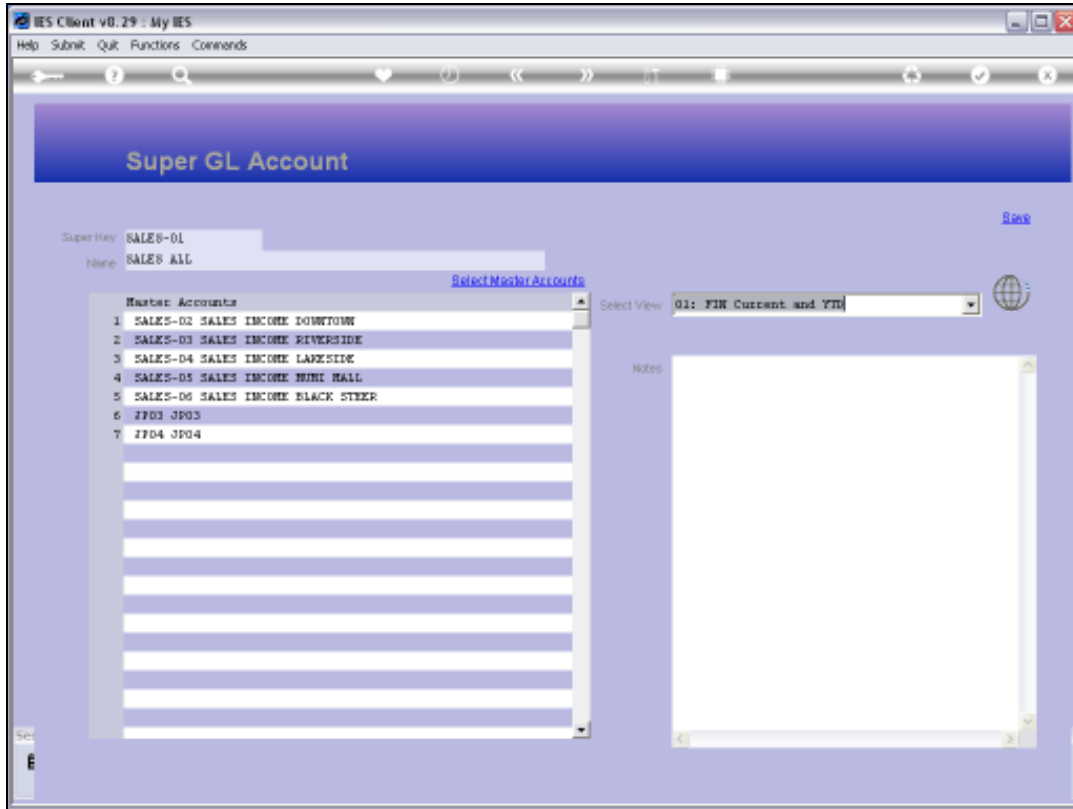
Slide 19
Slide notes:



Slide 20
Slide notes:

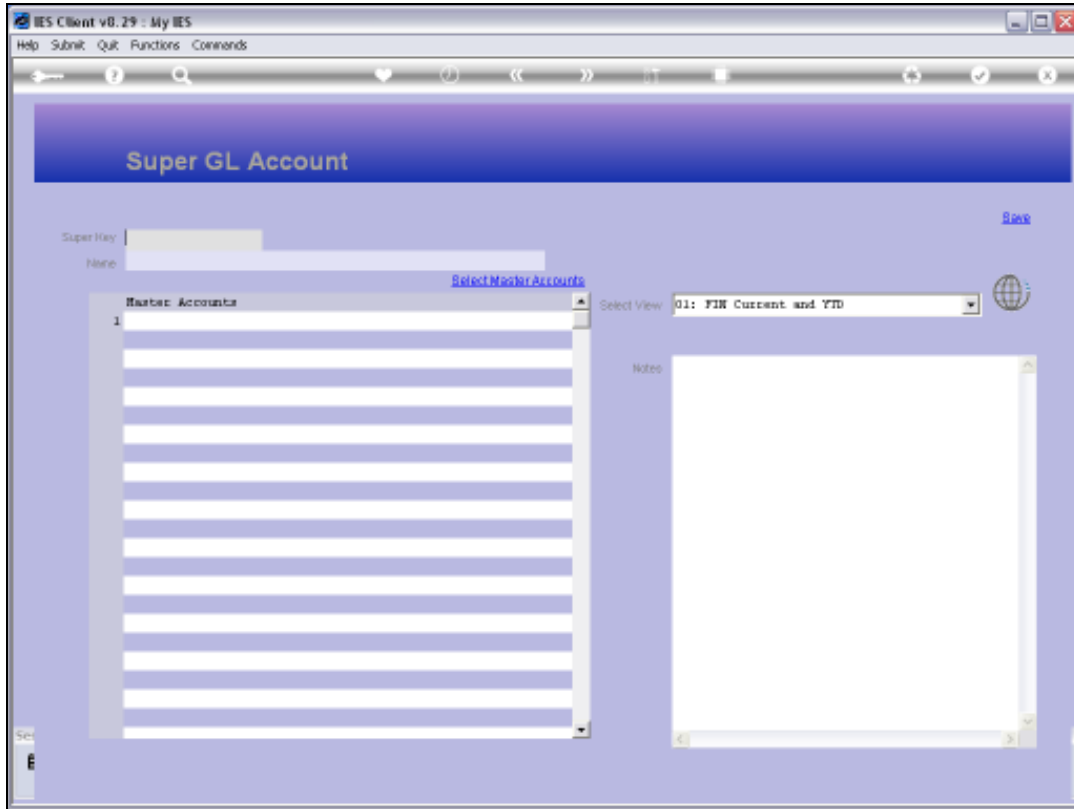


Slide 21
Slide notes:



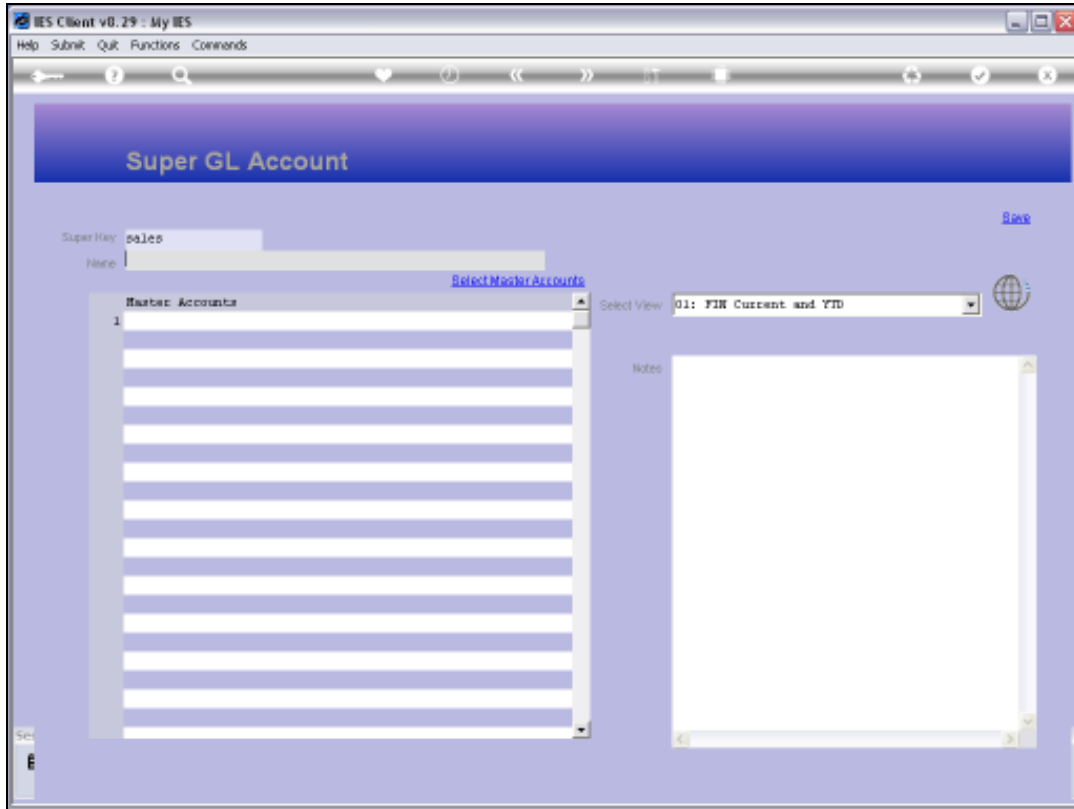
Slide 22

Slide notes: When we choose 'save', then any new additions become part of the Super Account.



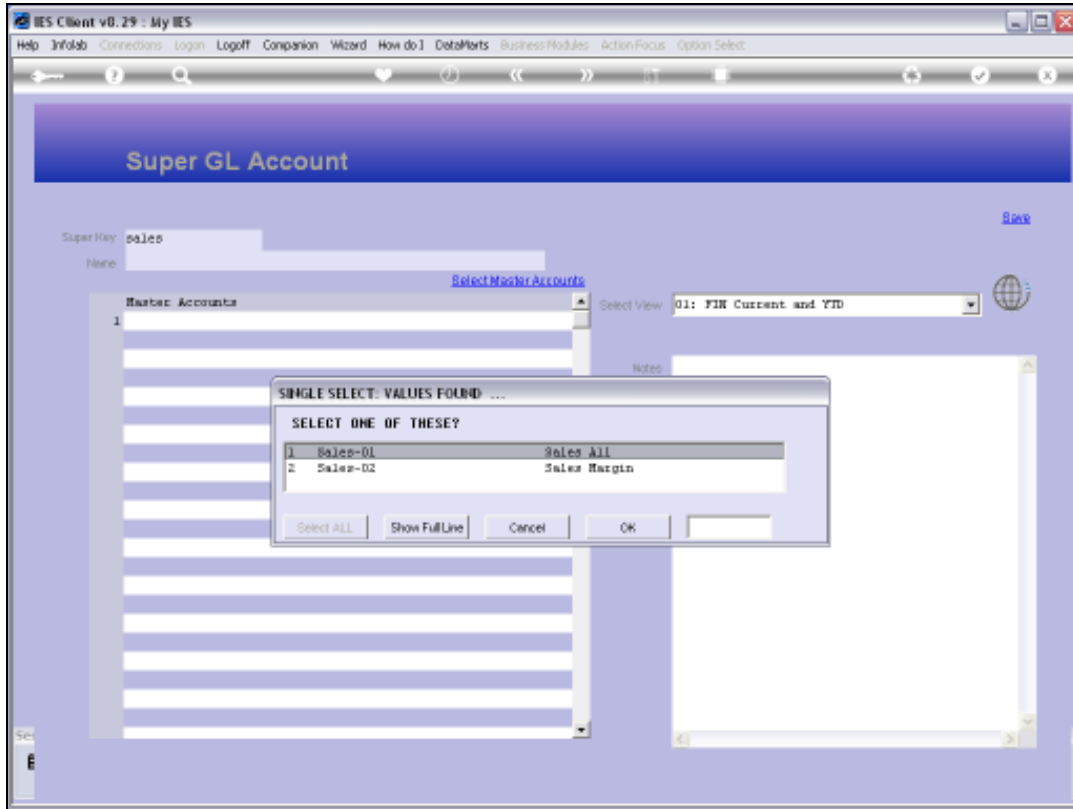
Slide 23

Slide notes:



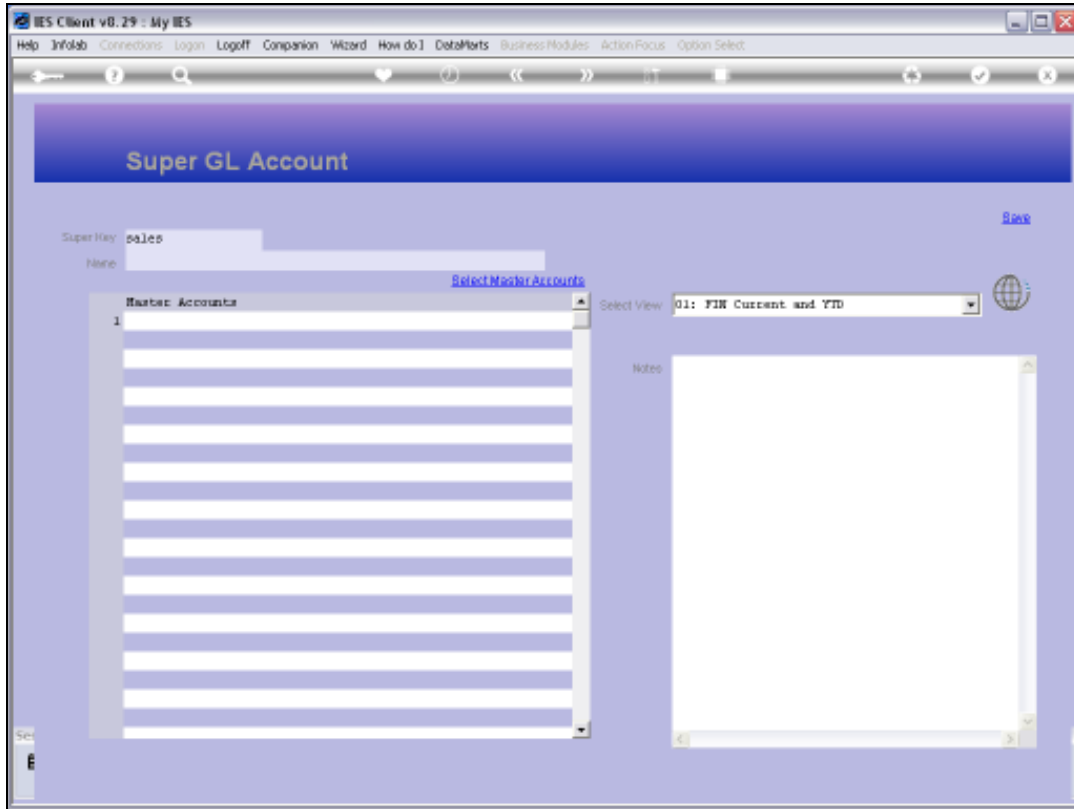
Slide 24

Slide notes:



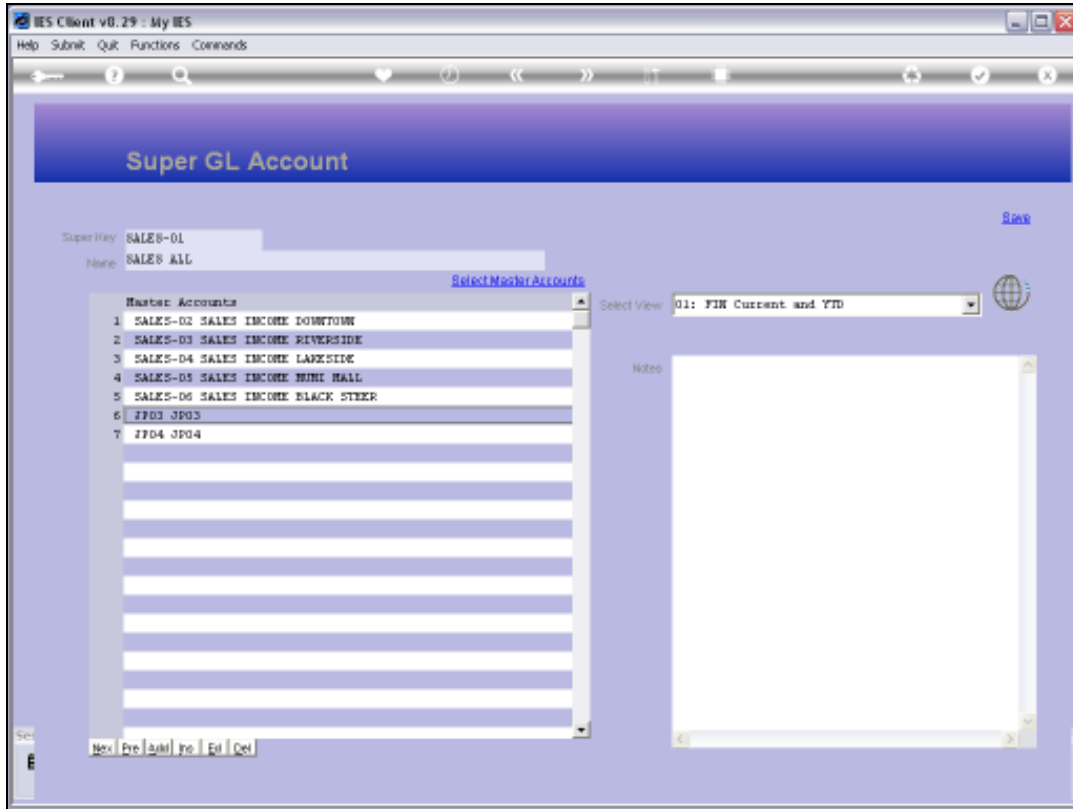
Slide 25

Slide notes:



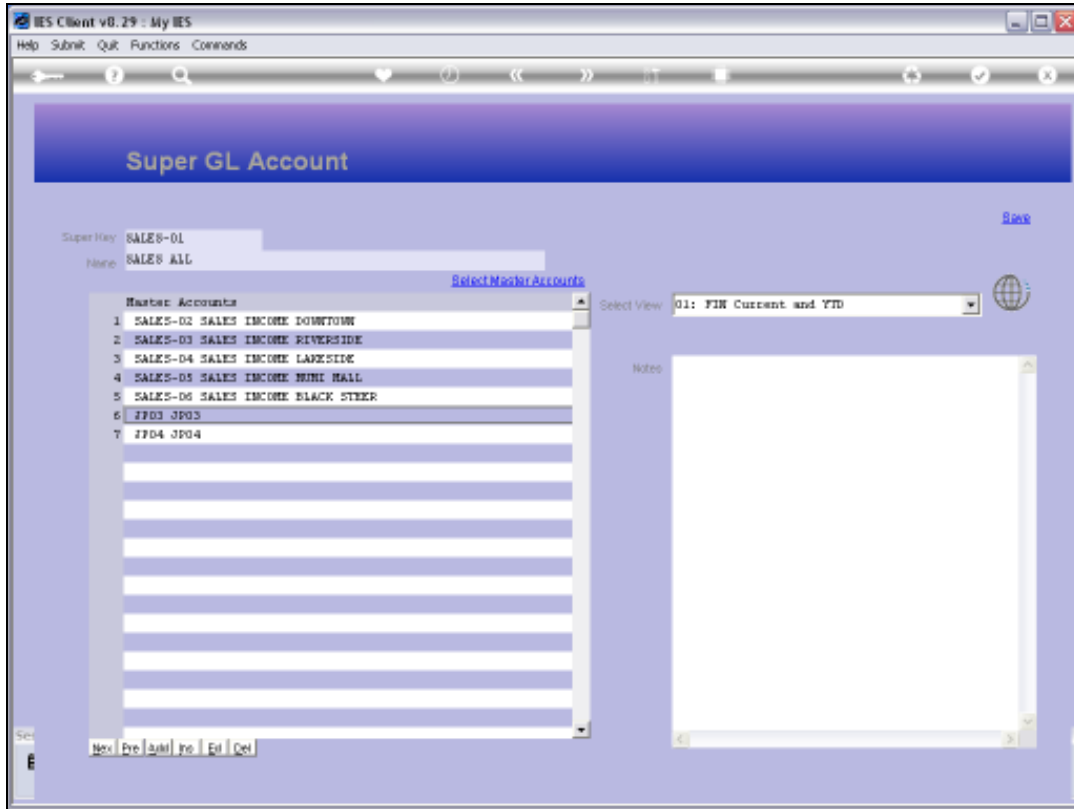
Slide 26

Slide notes:



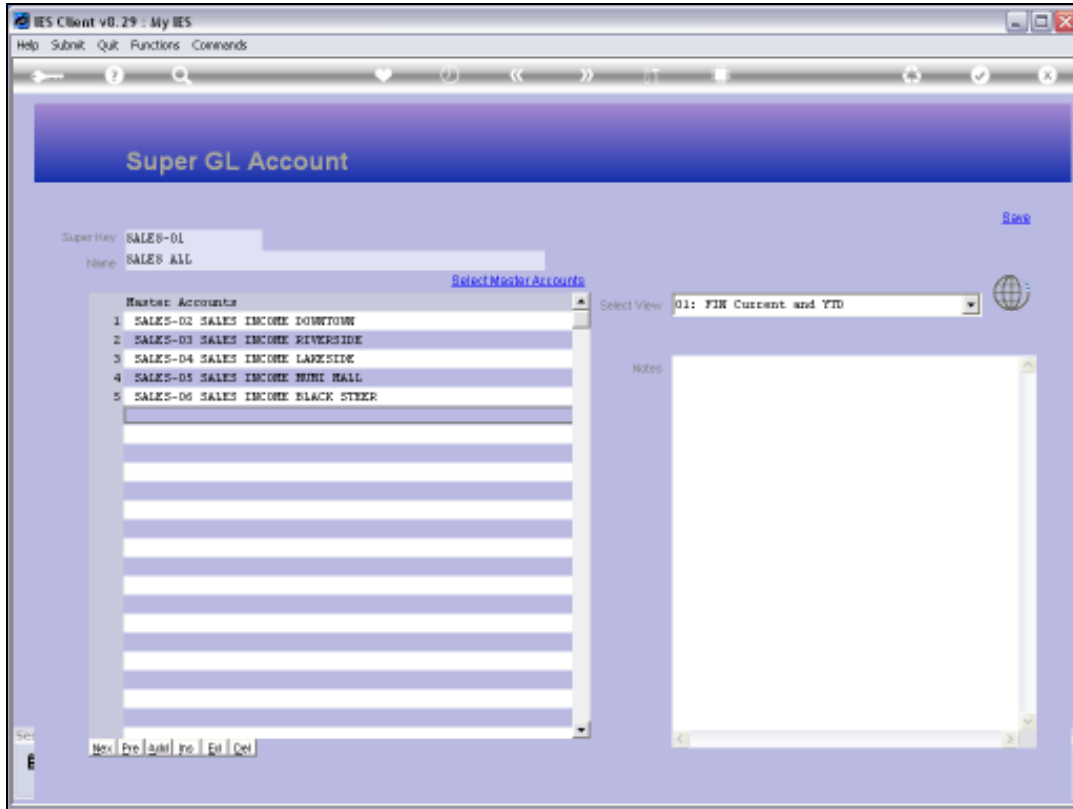
Slide 27

Slide notes: We can also remove Master Accounts from the Super Account right here.



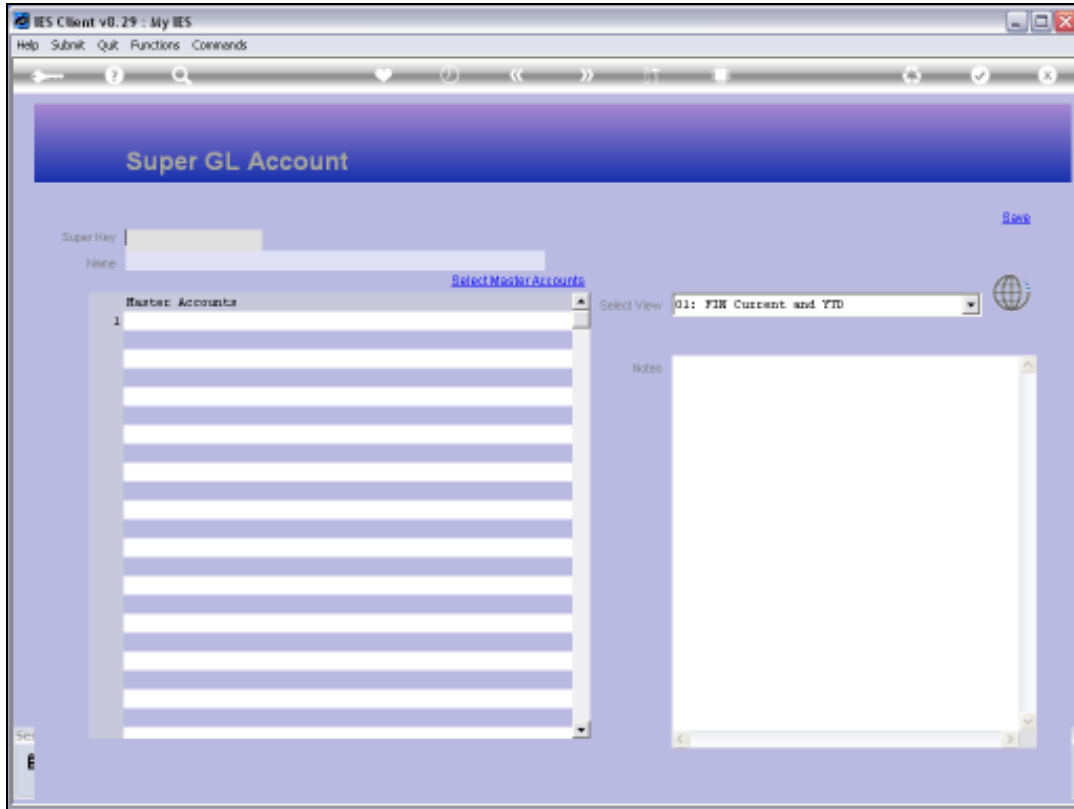
Slide 28

Slide notes:



Slide 29

Slide notes: This is how we may easily maintain current Super Accounts or create new ones.



Slide 30

Slide notes: