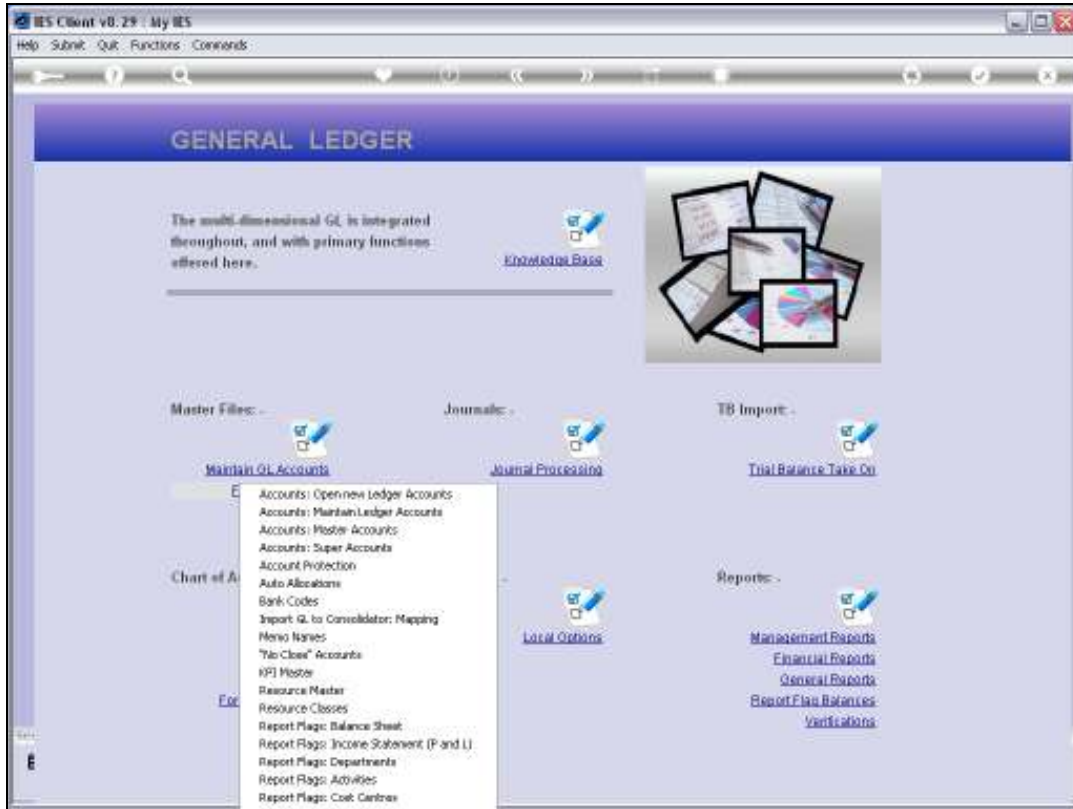
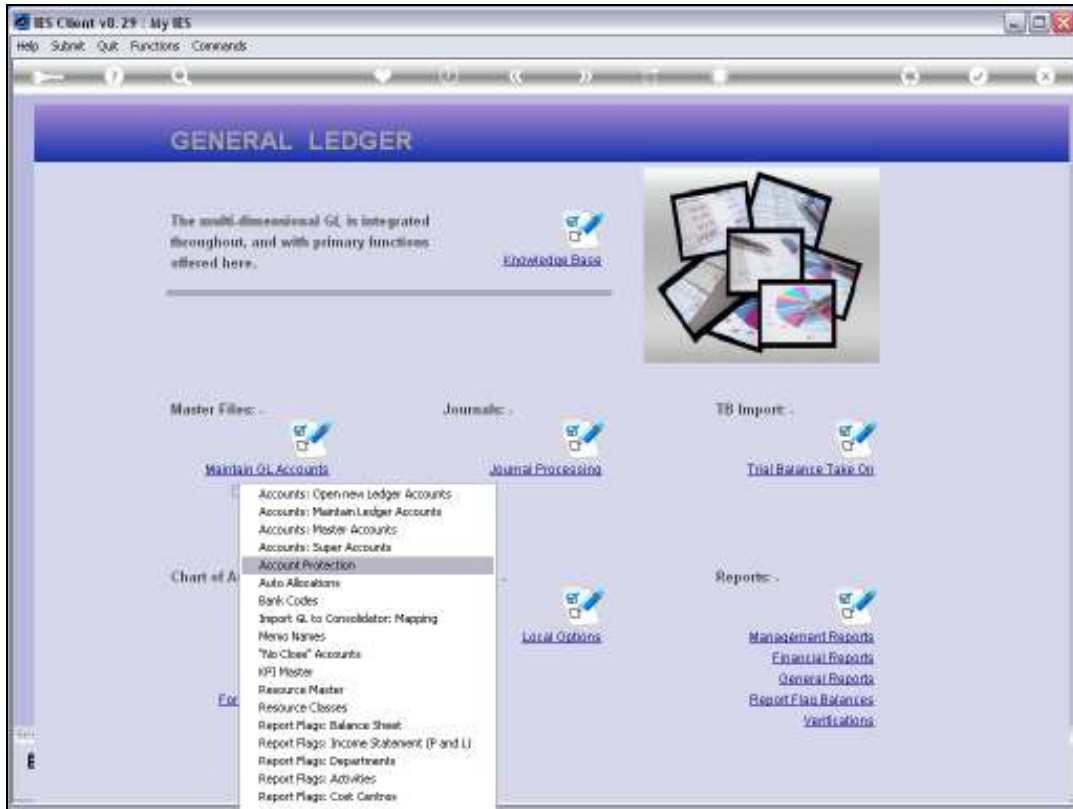


Slide 1

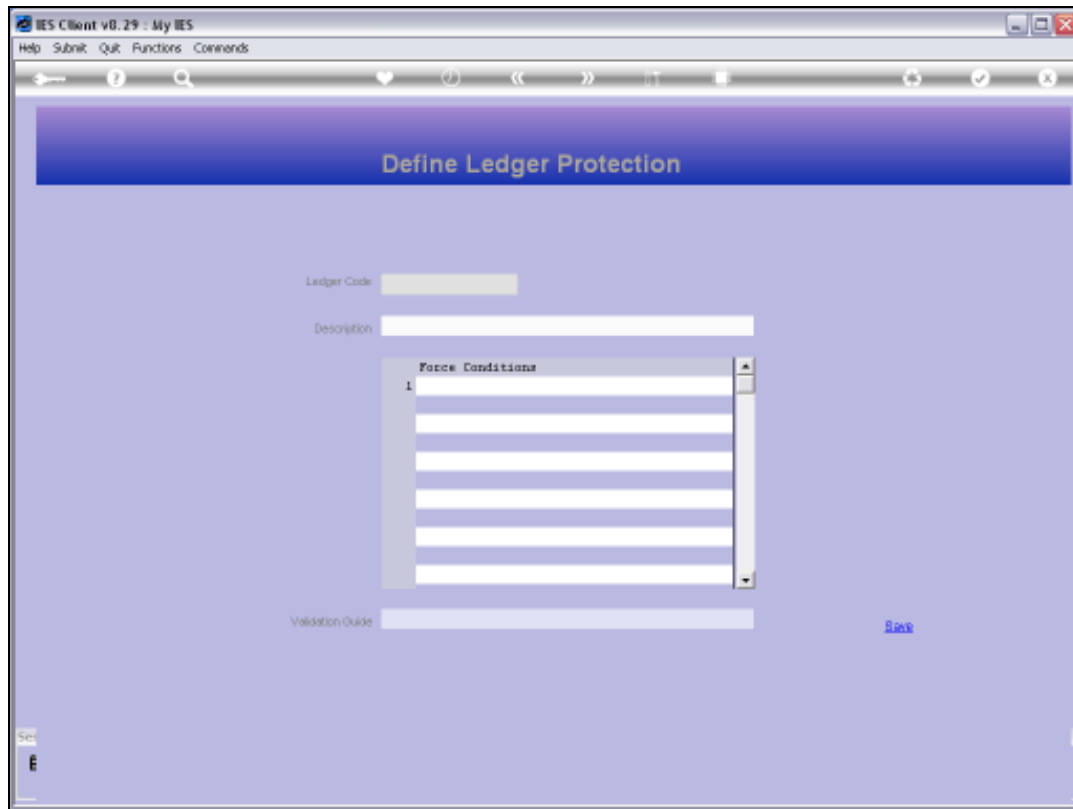
Slide notes: At the Ledger File Maintenance menu, we have an option to define Account Protection.



Slide 2
Slide notes:

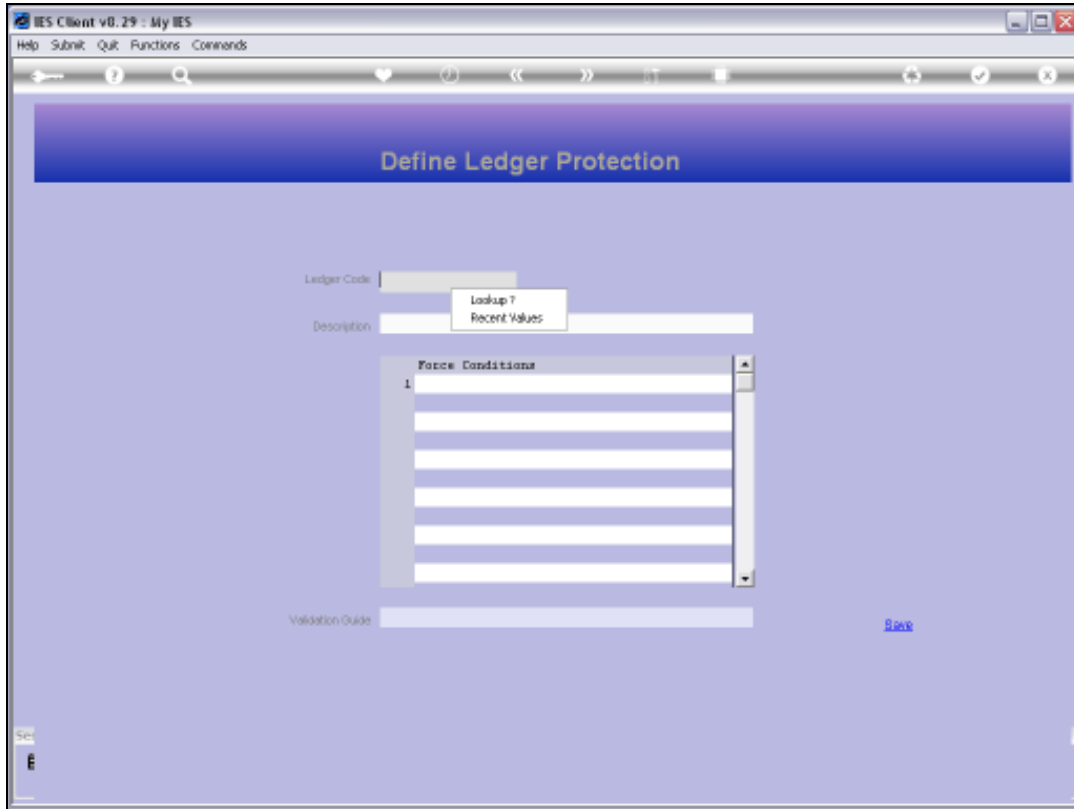


Slide 3
Slide notes:

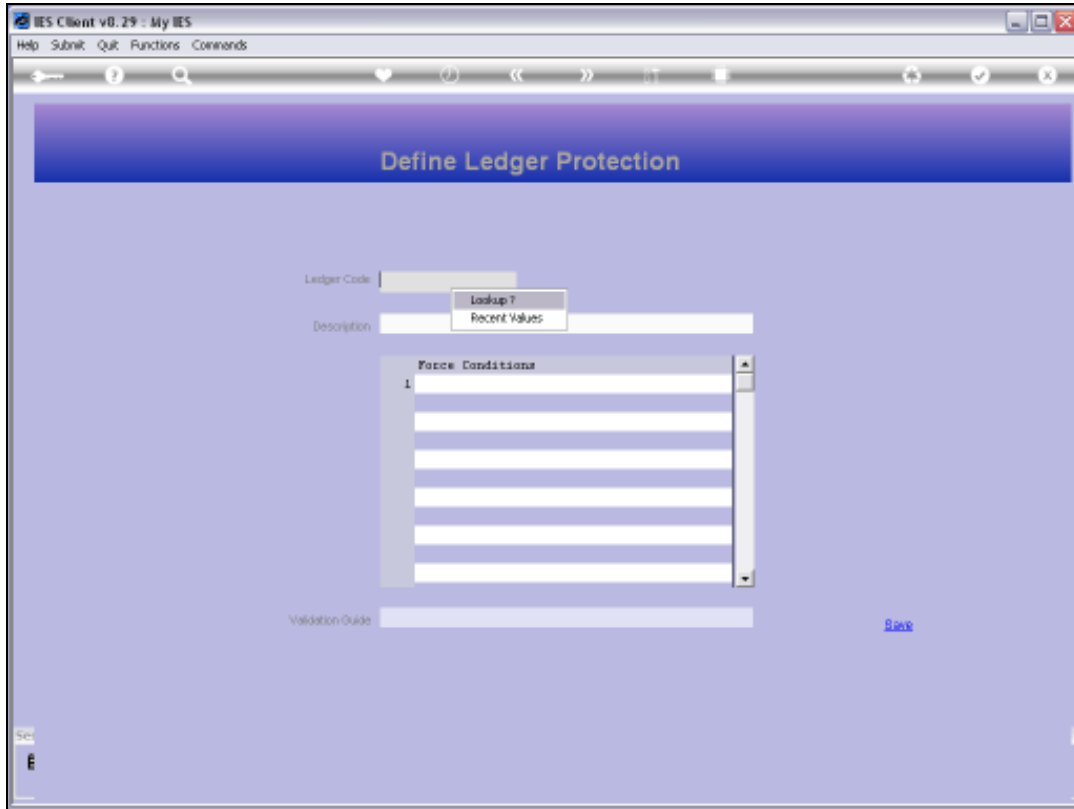


Slide 4

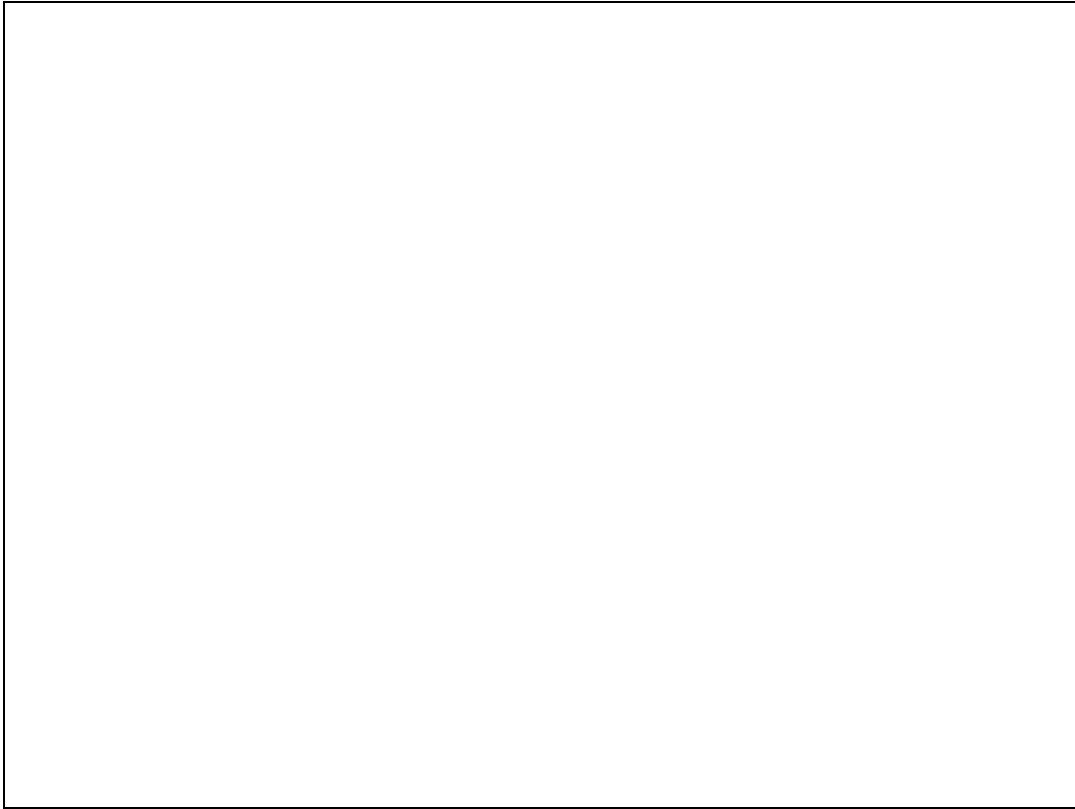
Slide notes: What is this? After all, the Accounts are already protected by Authority Codes, User Access control with Journals, etc. Well, the Account protection is not intended for use with all Accounts, but rather for controlling those rare instances where we want to ensure that people do not post un-authorized entries onto a given Account.



Slide 5
Slide notes:

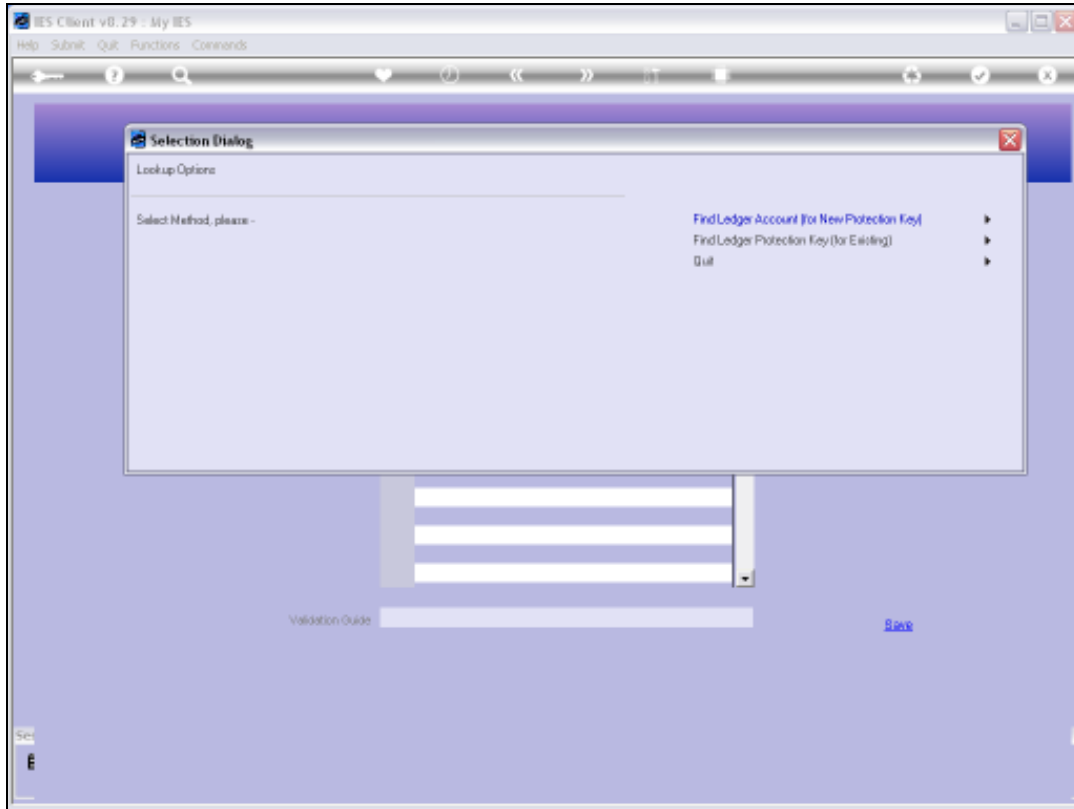


Slide 6
Slide notes:

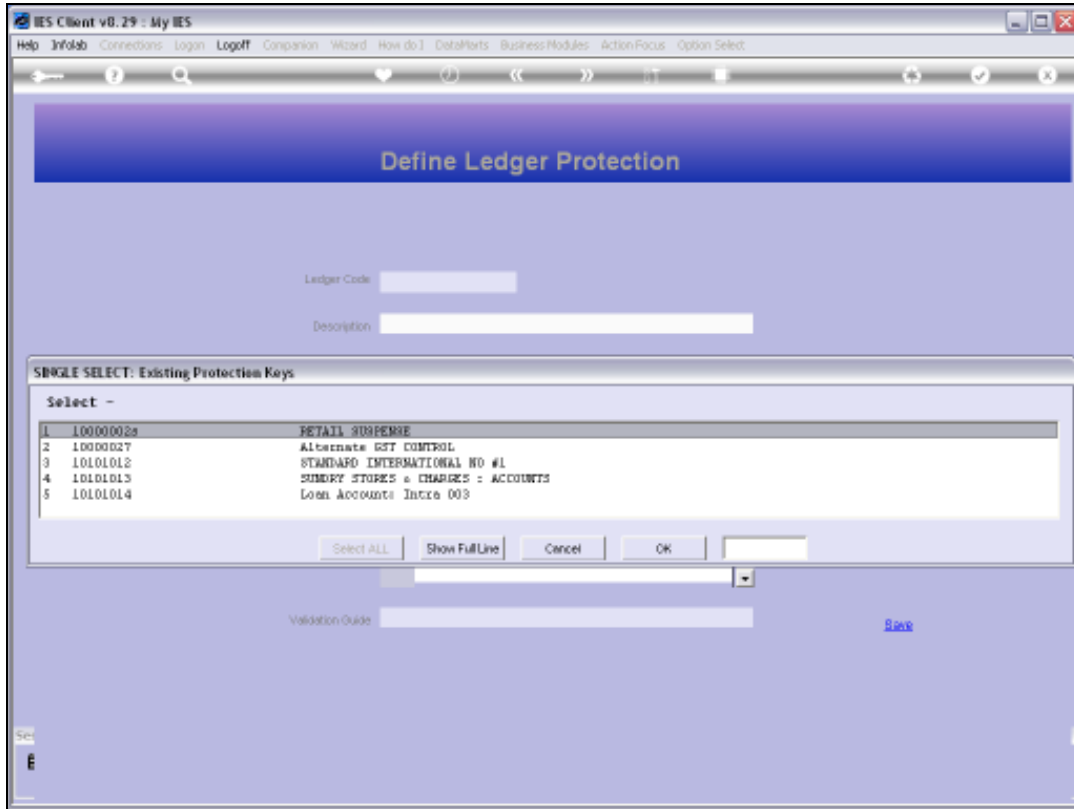


Slide 7

Slide notes: The Lookup provides for selection of an Account where some protection is already defined, as well as for selection from the General Ledger, from which we may select an Account to define new protection.

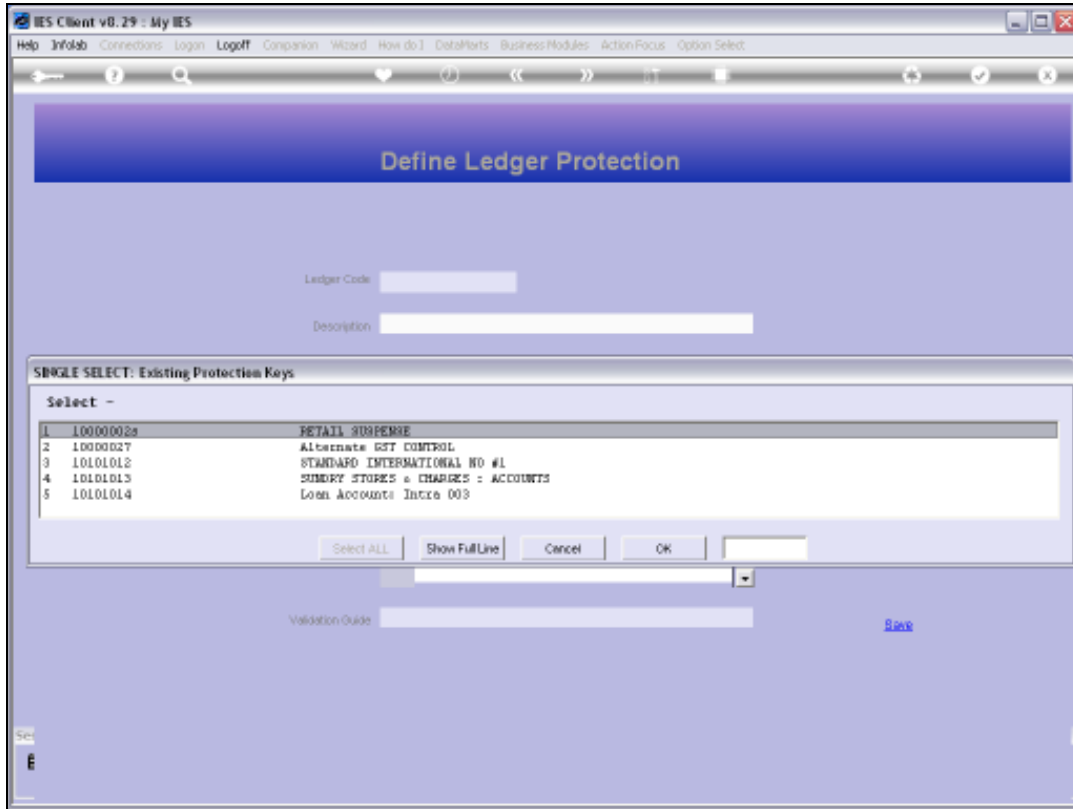


Slide 8
Slide notes:

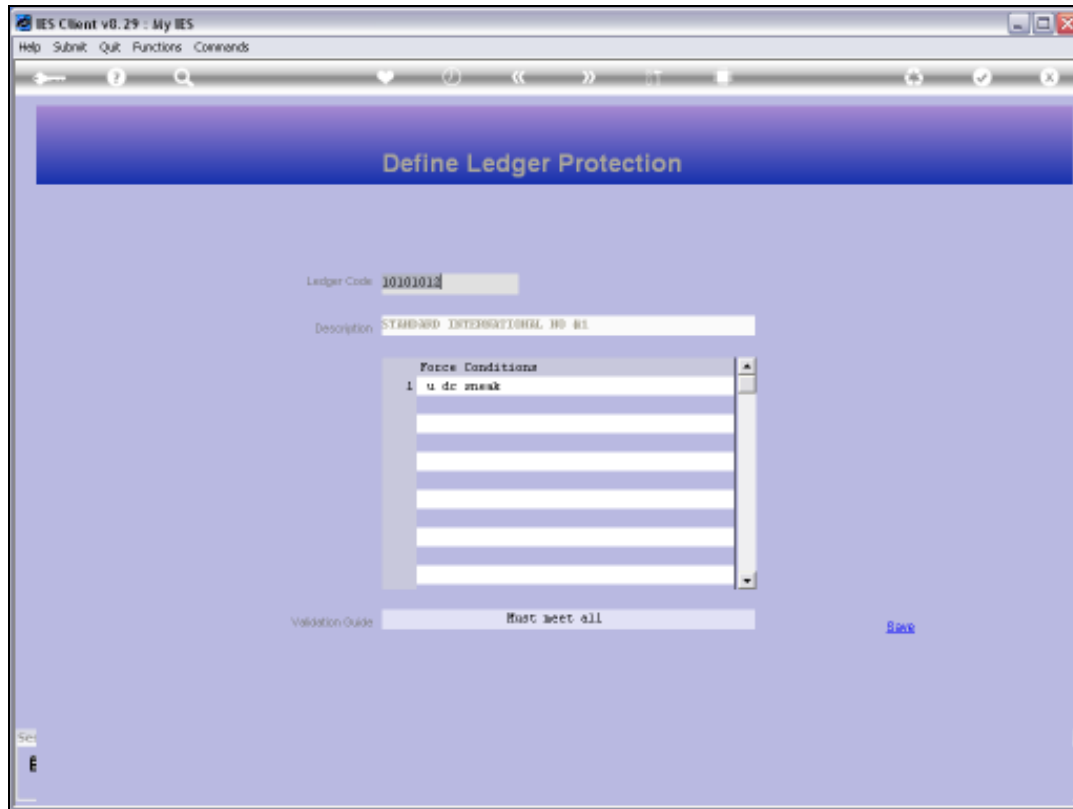


Slide 9

Slide notes: The entries on this List already have some protection defined.

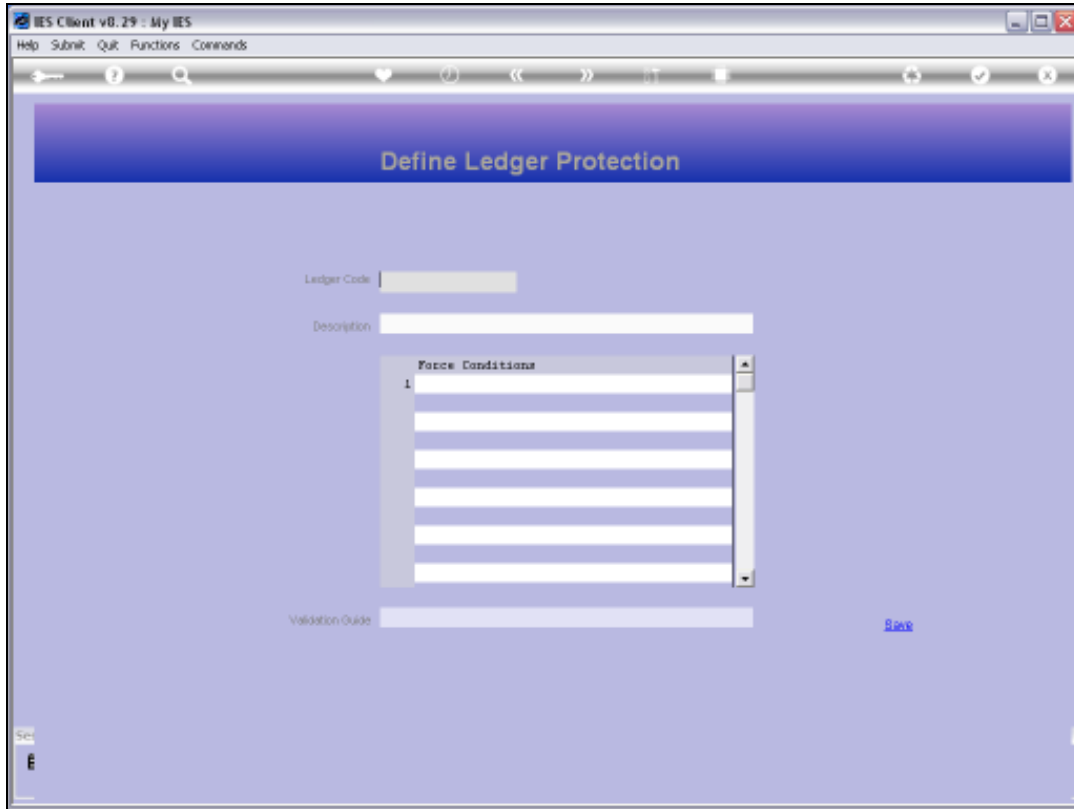


Slide 10
Slide notes:



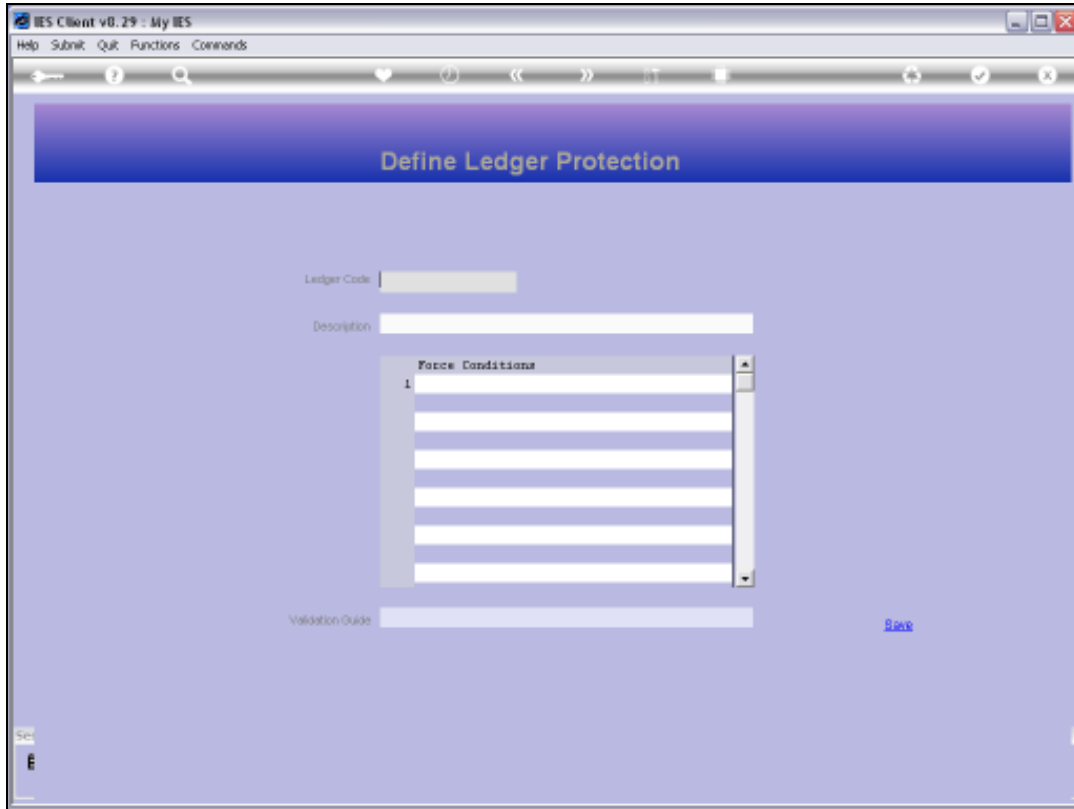
Slide 11

Slide notes: The Key for the Protection Instruction is always the Ledgercode for the Account that is to be protected. We may then list 1 or more Rules to apply, and a Validation guide that indicates which Validations must pass as a minimum to allow a posting to this Account. The rules are applied with Journal Processing.



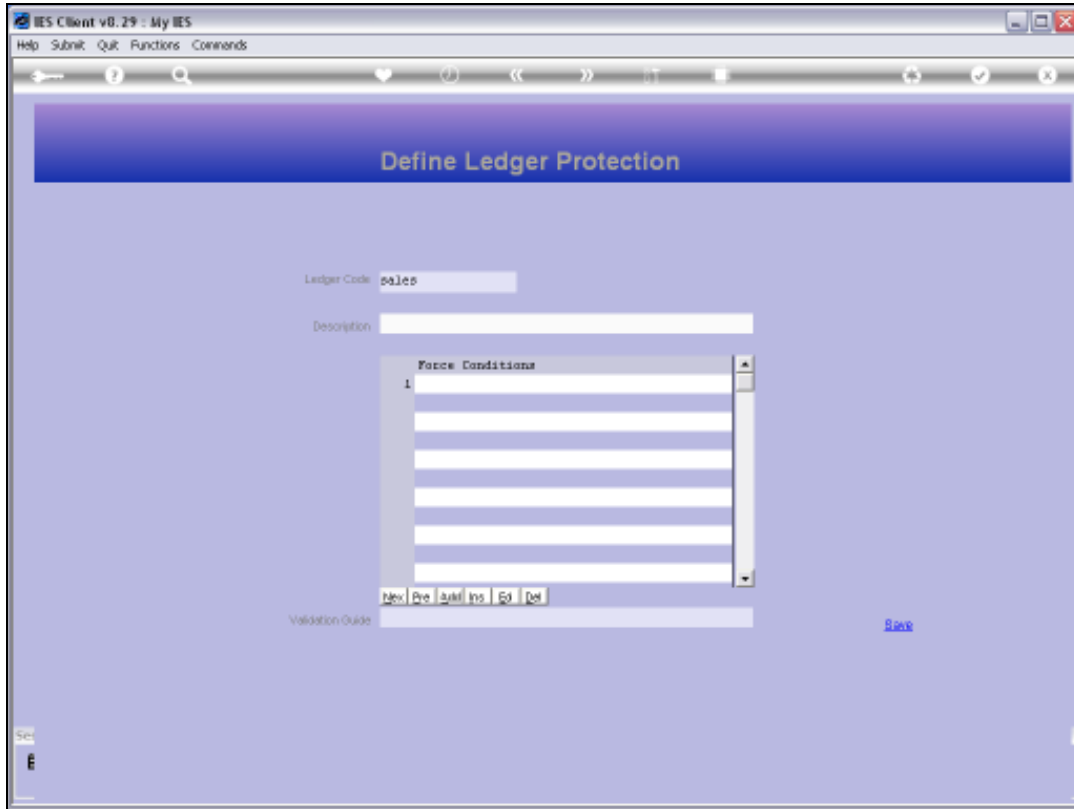
Slide 12

Slide notes:



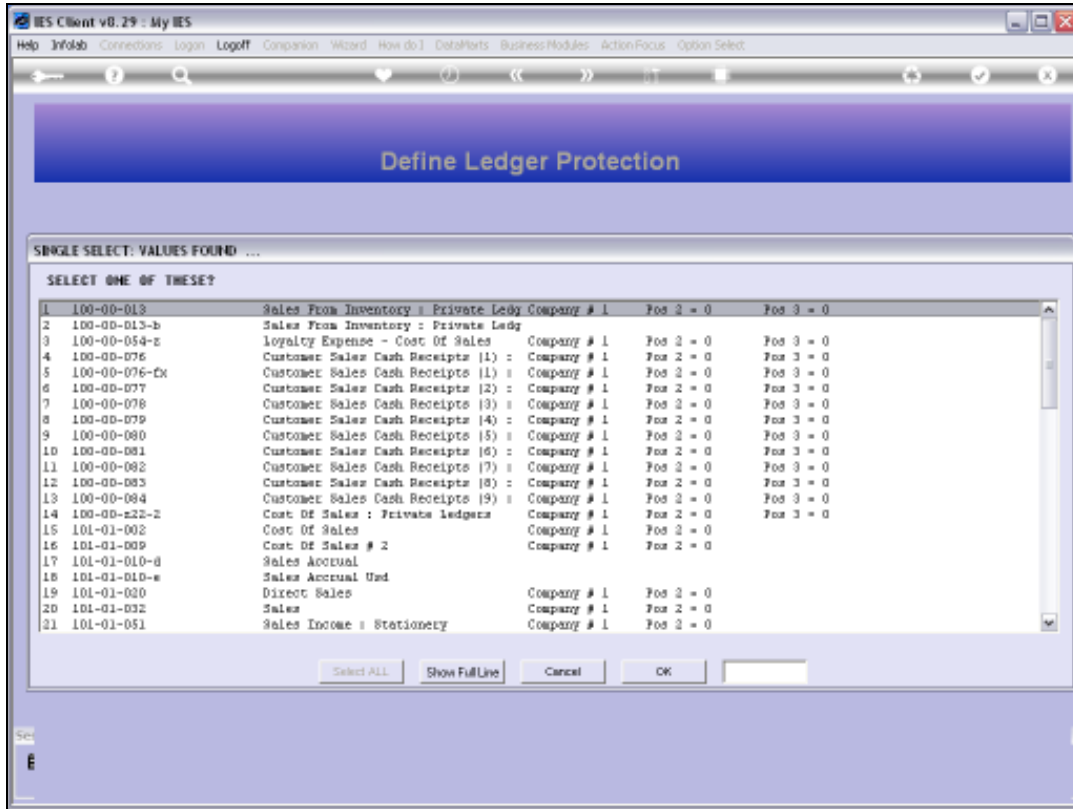
Slide 13

Slide notes:

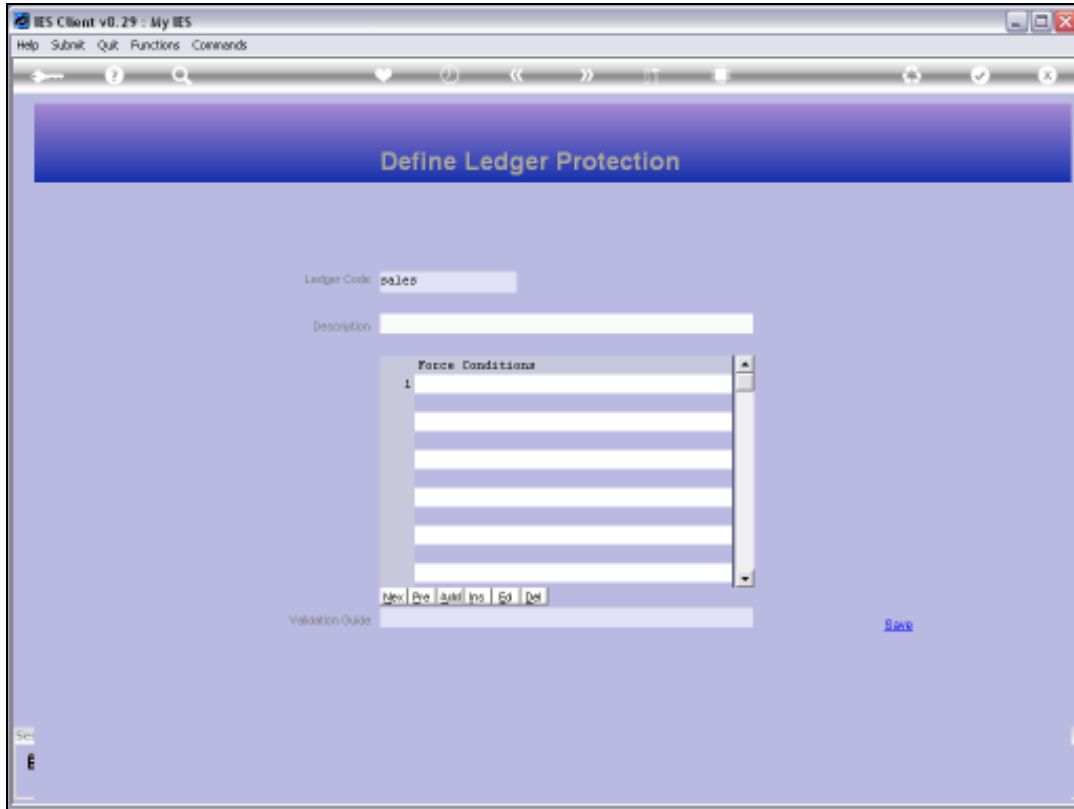


Slide 14

Slide notes:

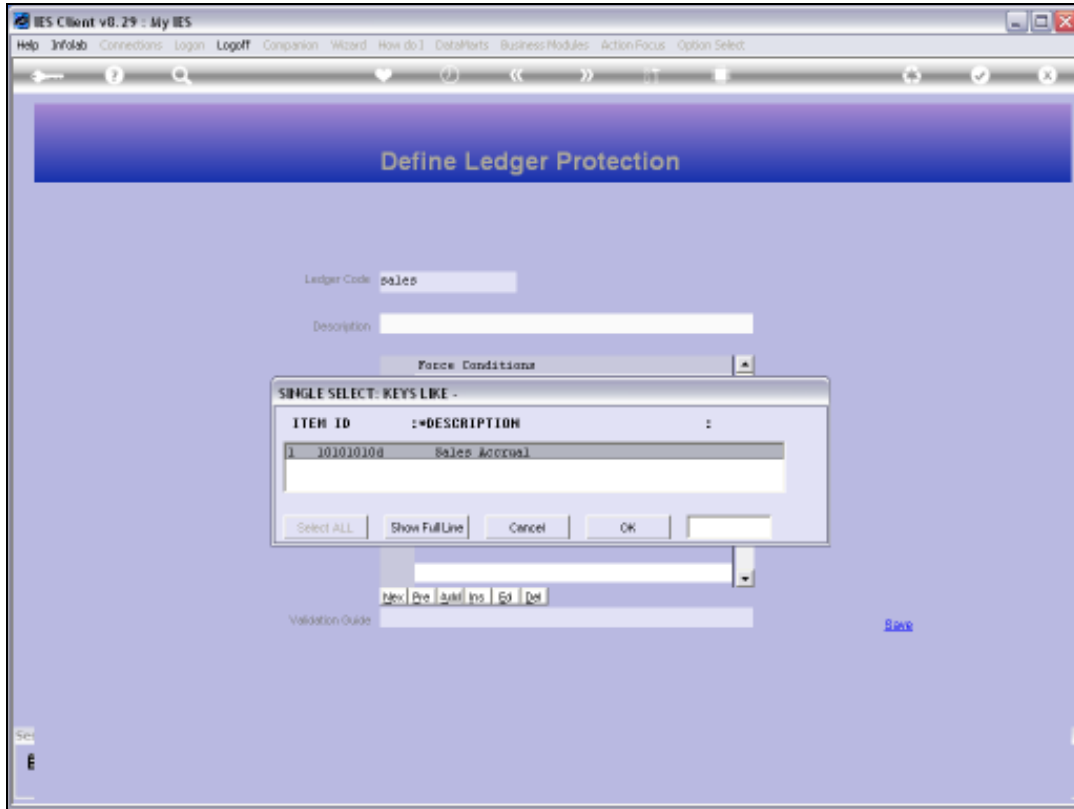


Slide 15
Slide notes:



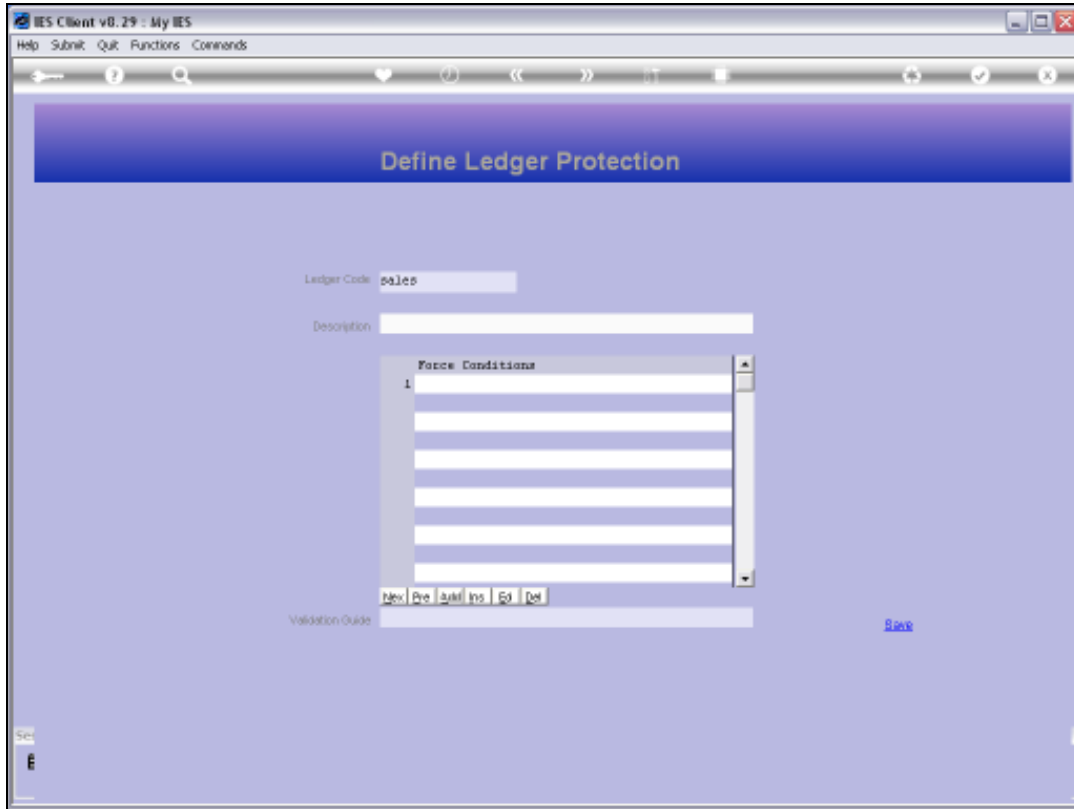
Slide 16

Slide notes:



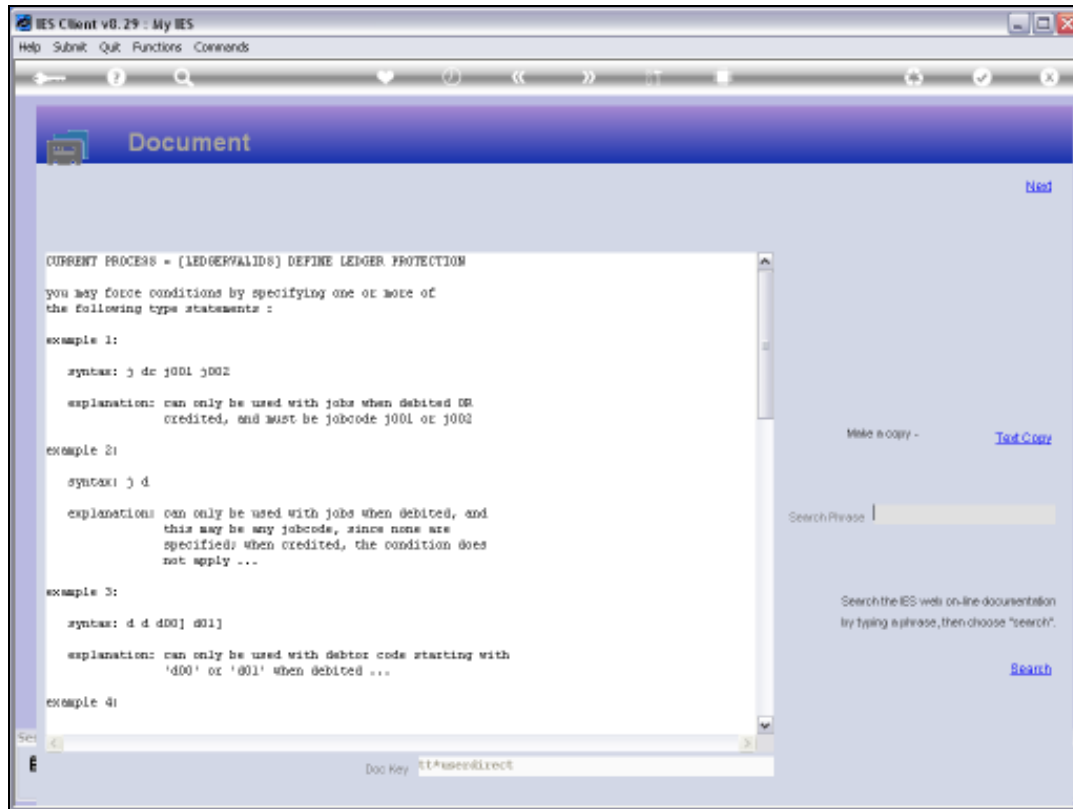
Slide 17

Slide notes:



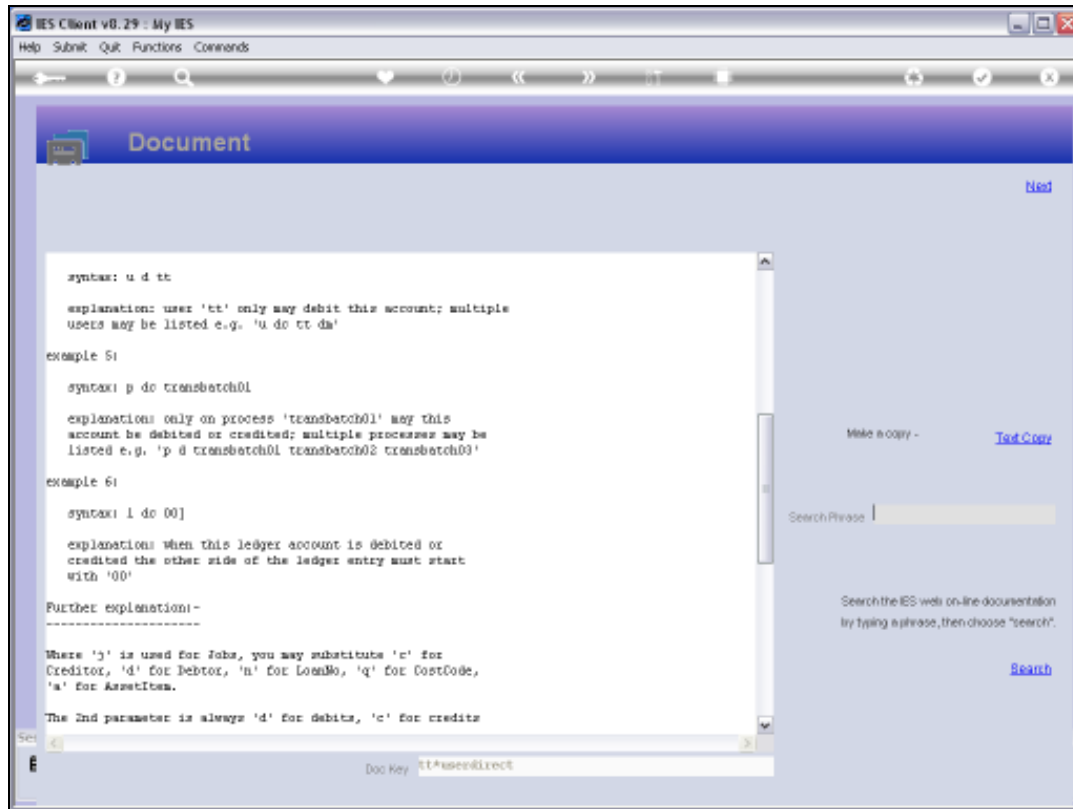
Slide 18

Slide notes:

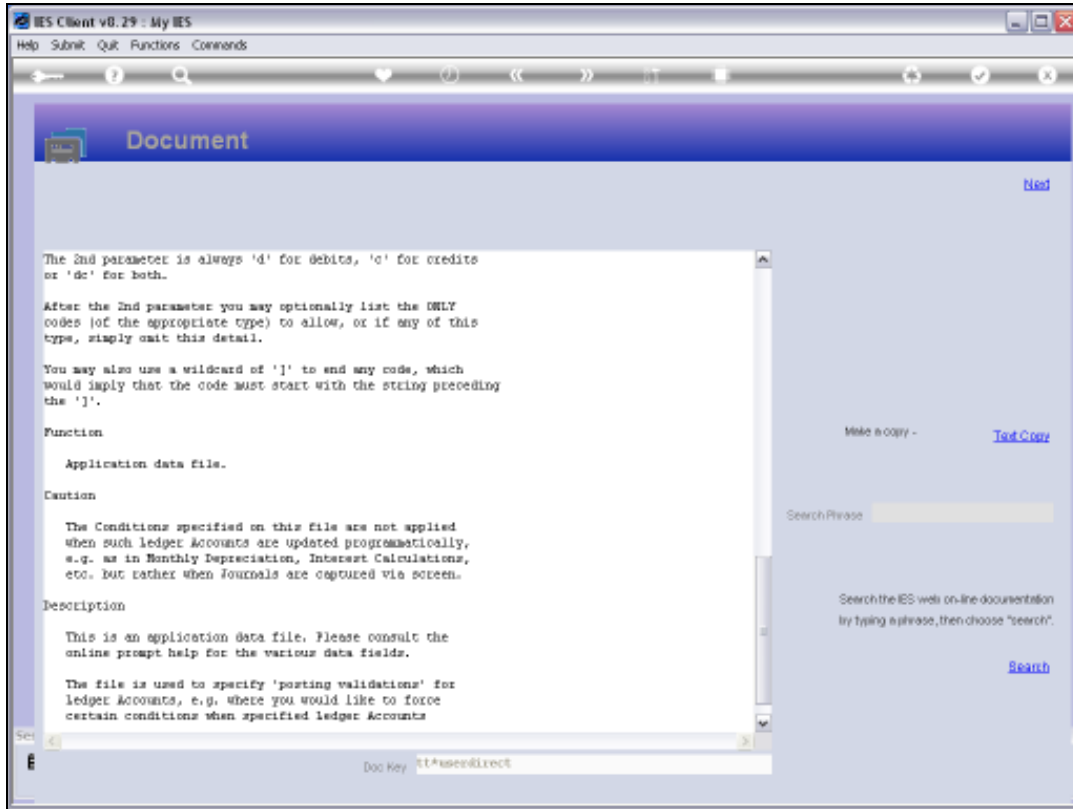


Slide 19

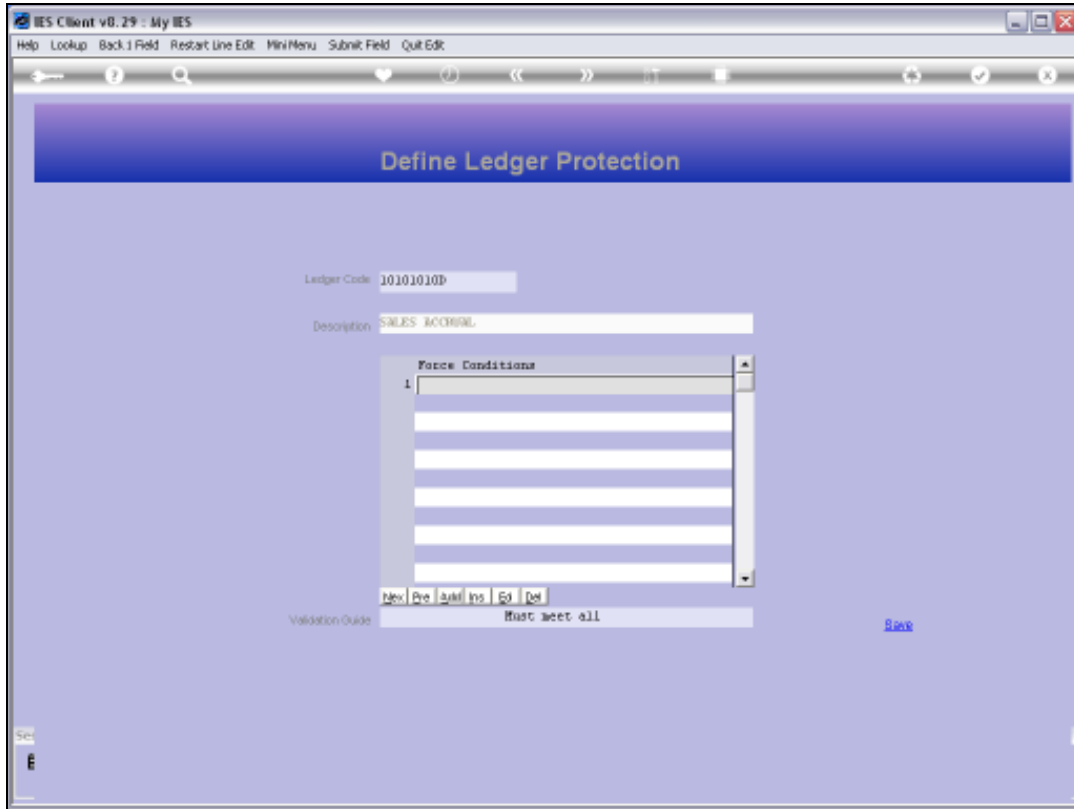
Slide notes: The Help explains how we can specify posting rules. For example, an Account can be protected so that it may only be posted together with Job Costing, or by certain Users only, or with certain Menu options only, etc.



Slide 20
Slide notes:

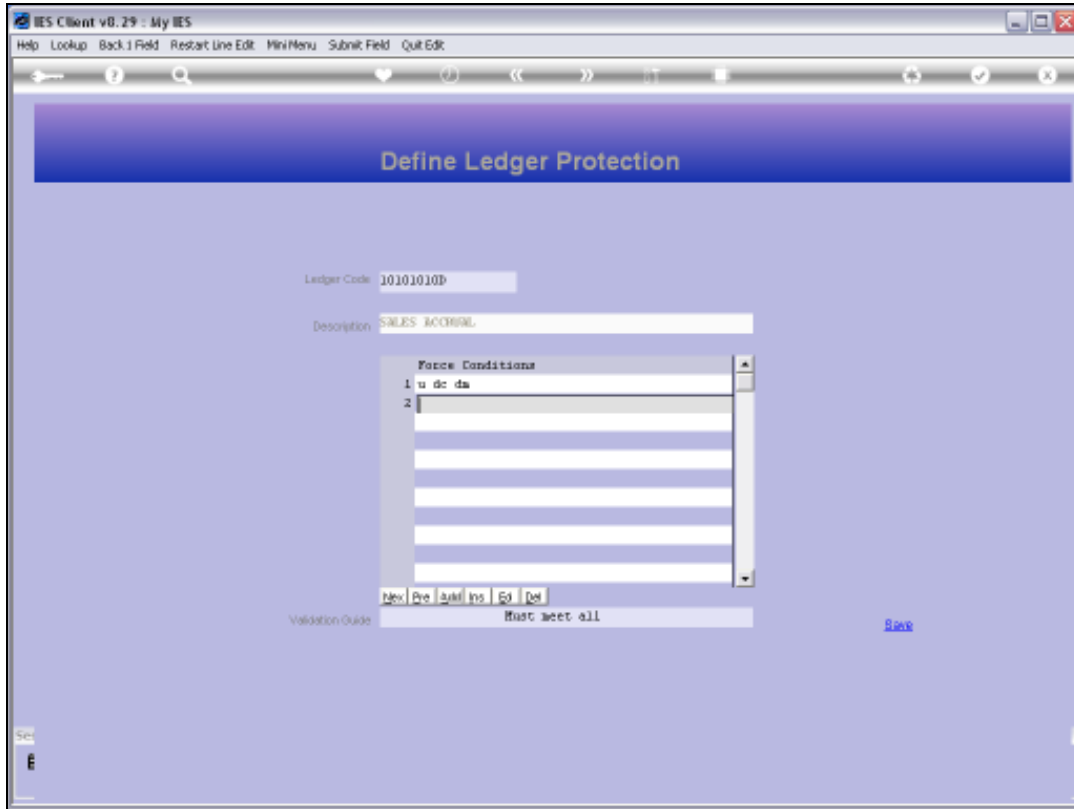


Slide 21
Slide notes:



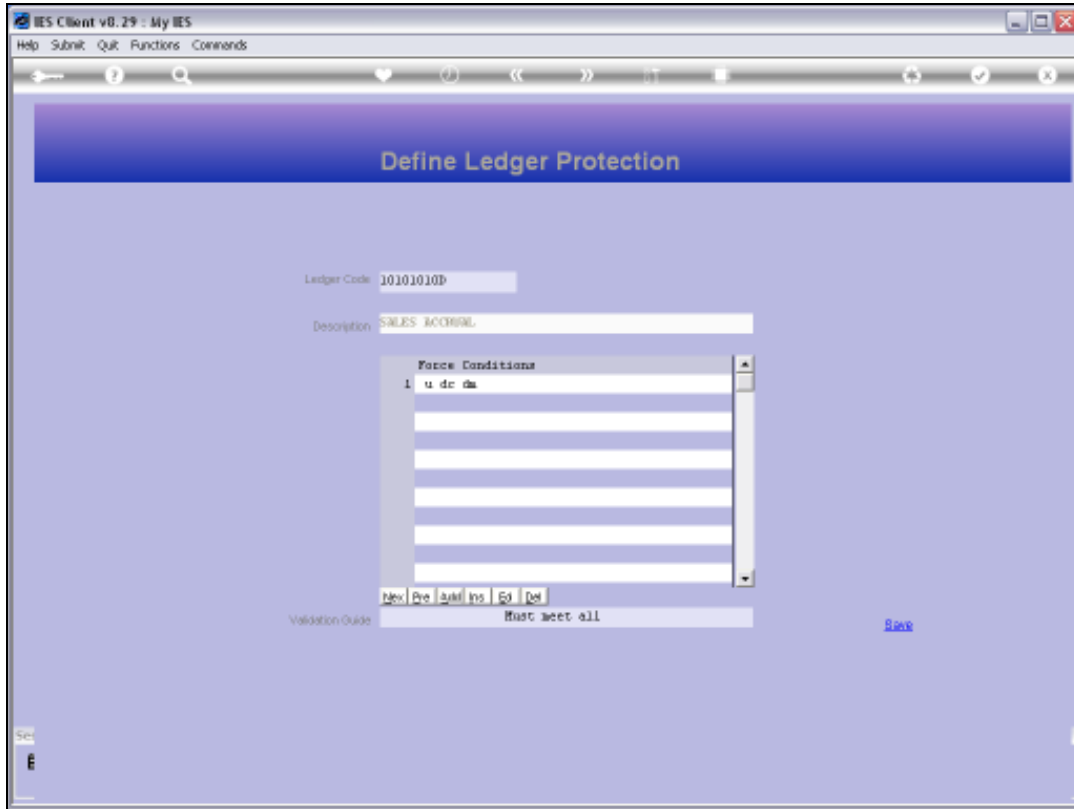
Slide 22

Slide notes:



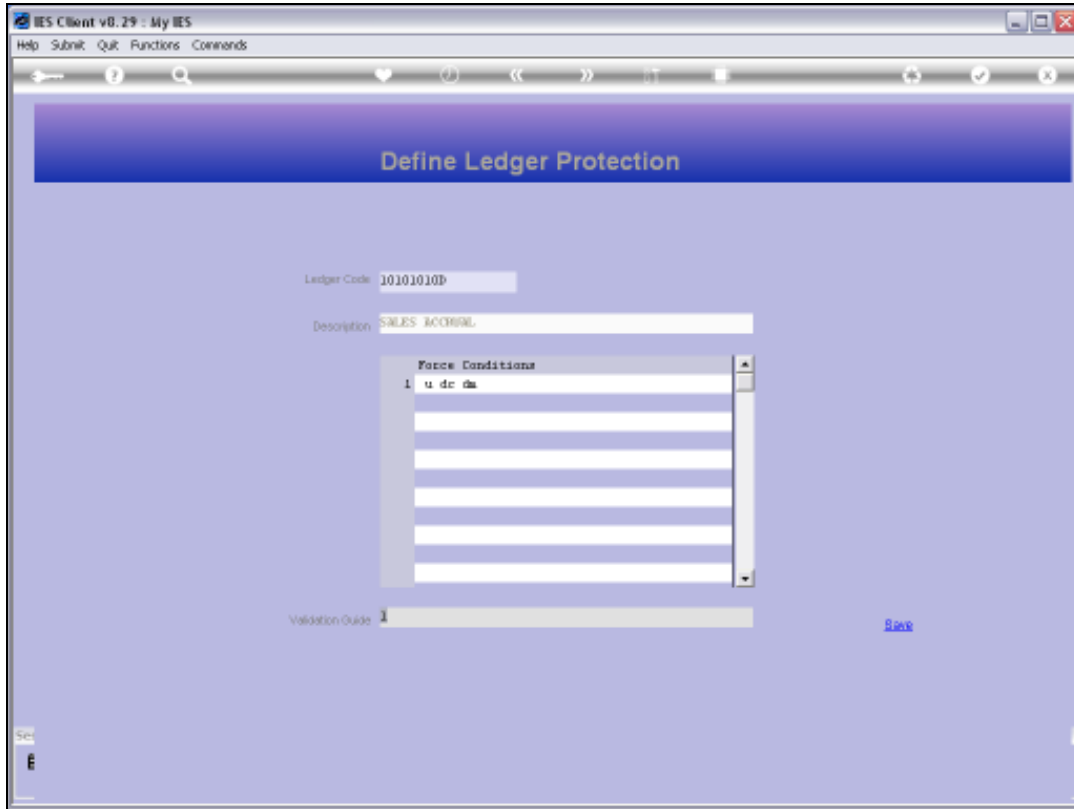
Slide 23

Slide notes:



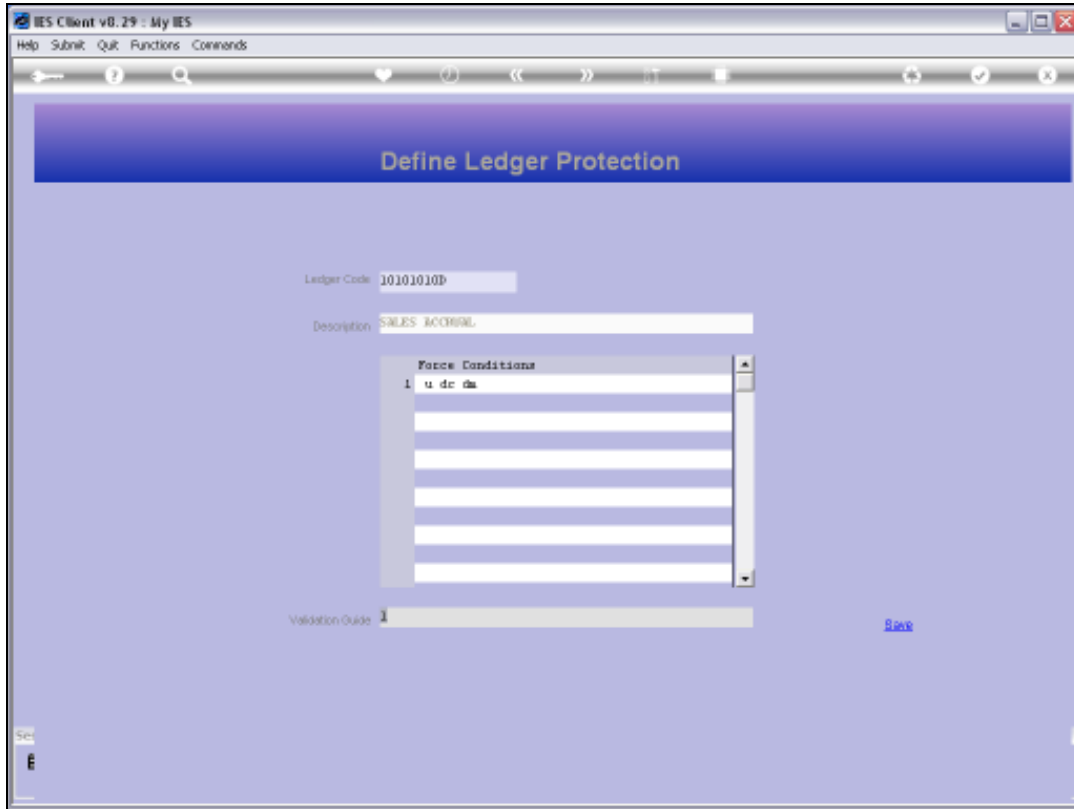
Slide 24

Slide notes:



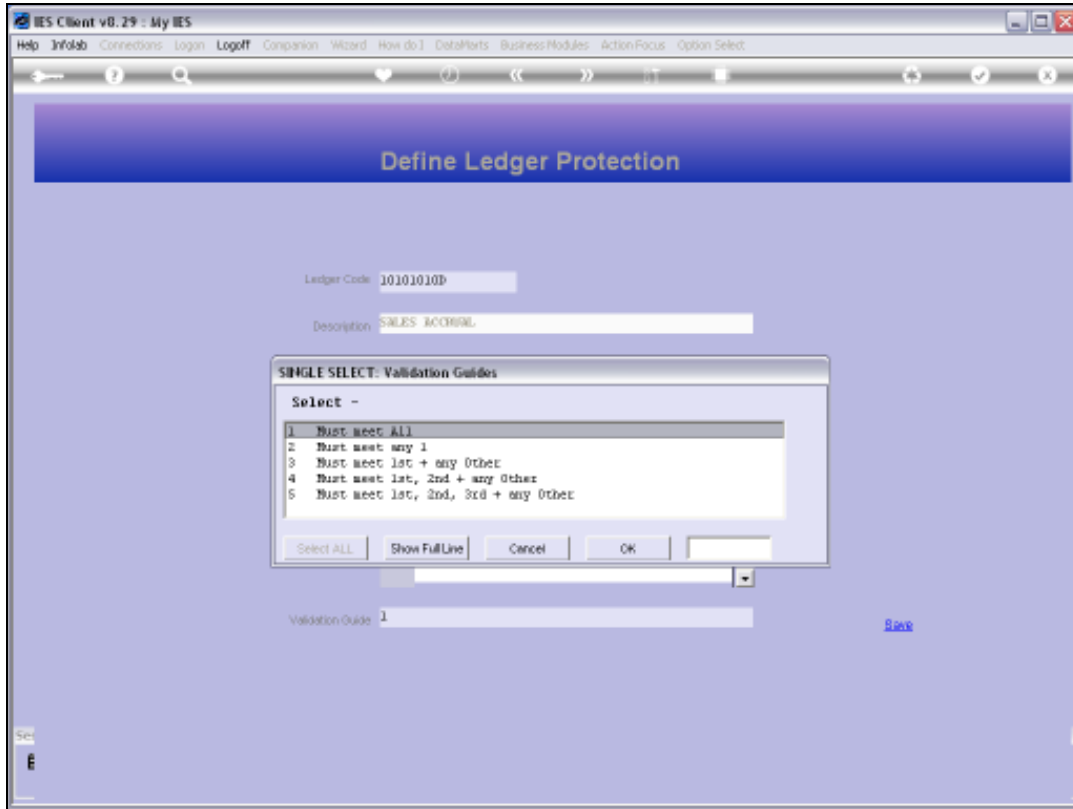
Slide 25

Slide notes:



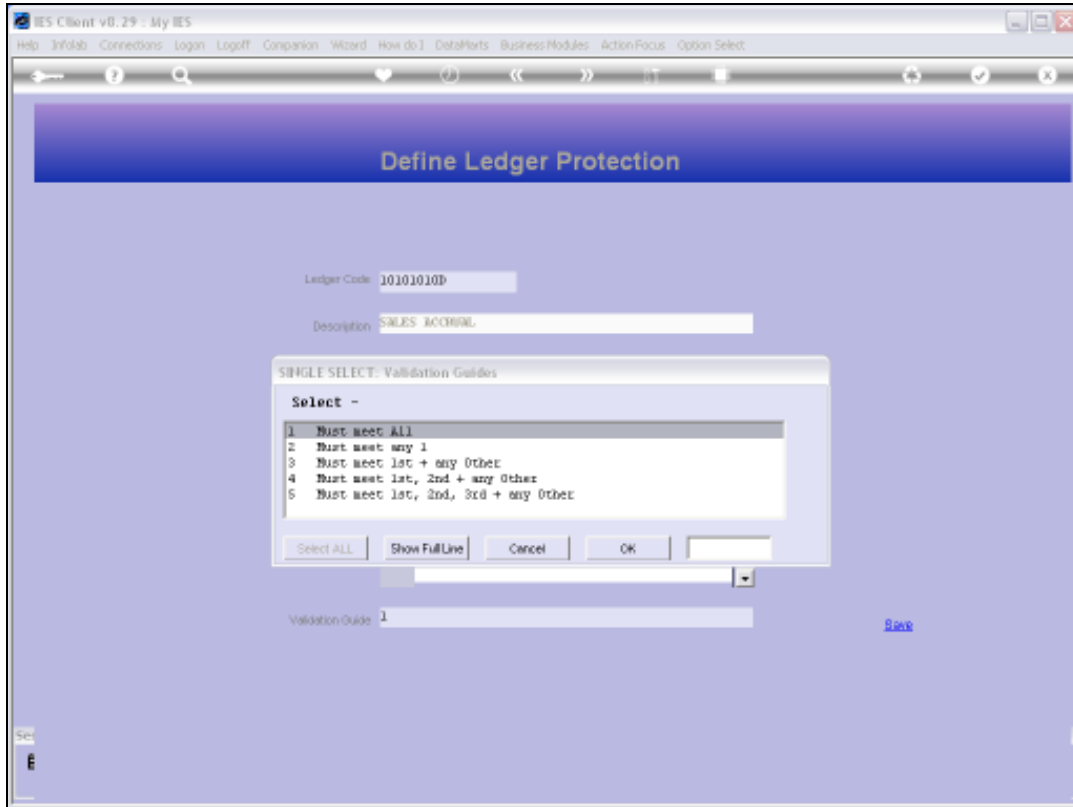
Slide 26

Slide notes:

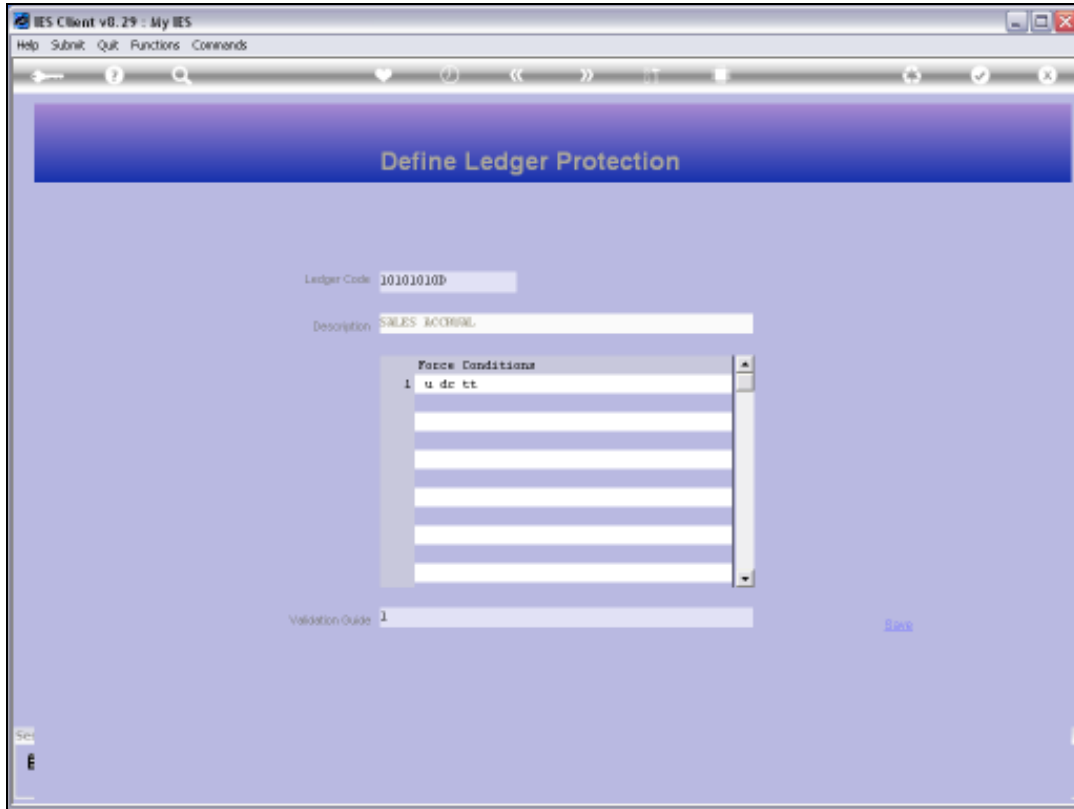


Slide 27

Slide notes: These are the Validation Guide options.

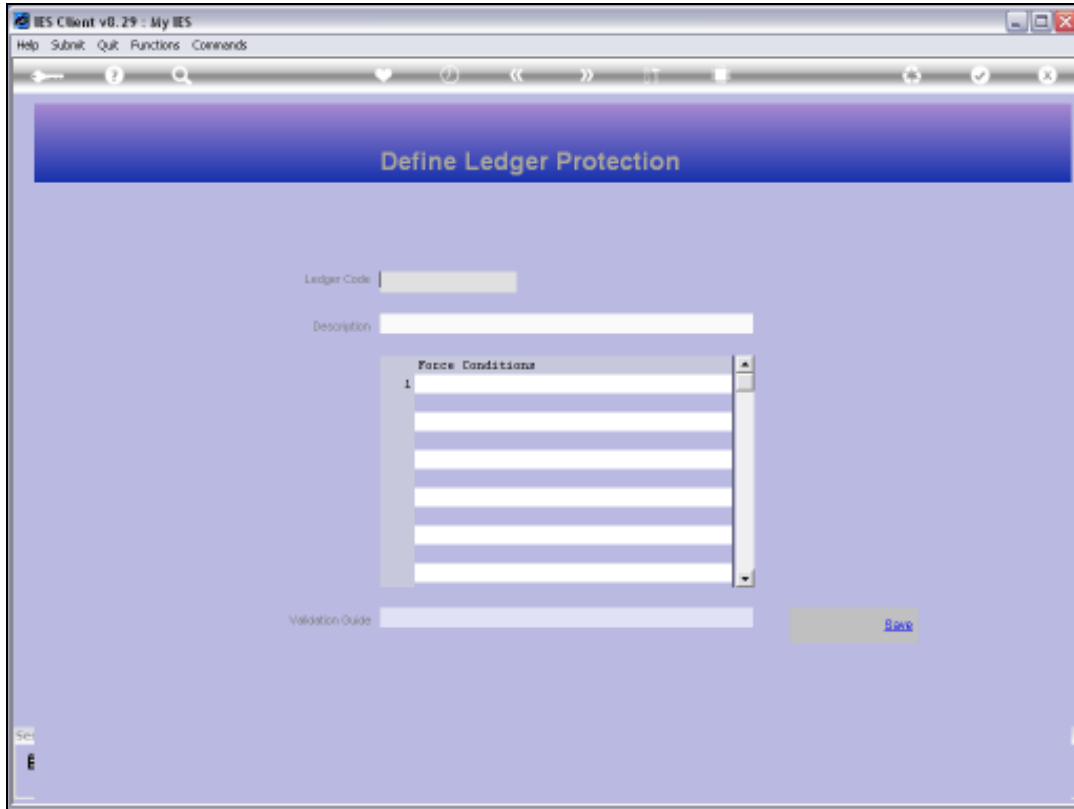


Slide 28
Slide notes:



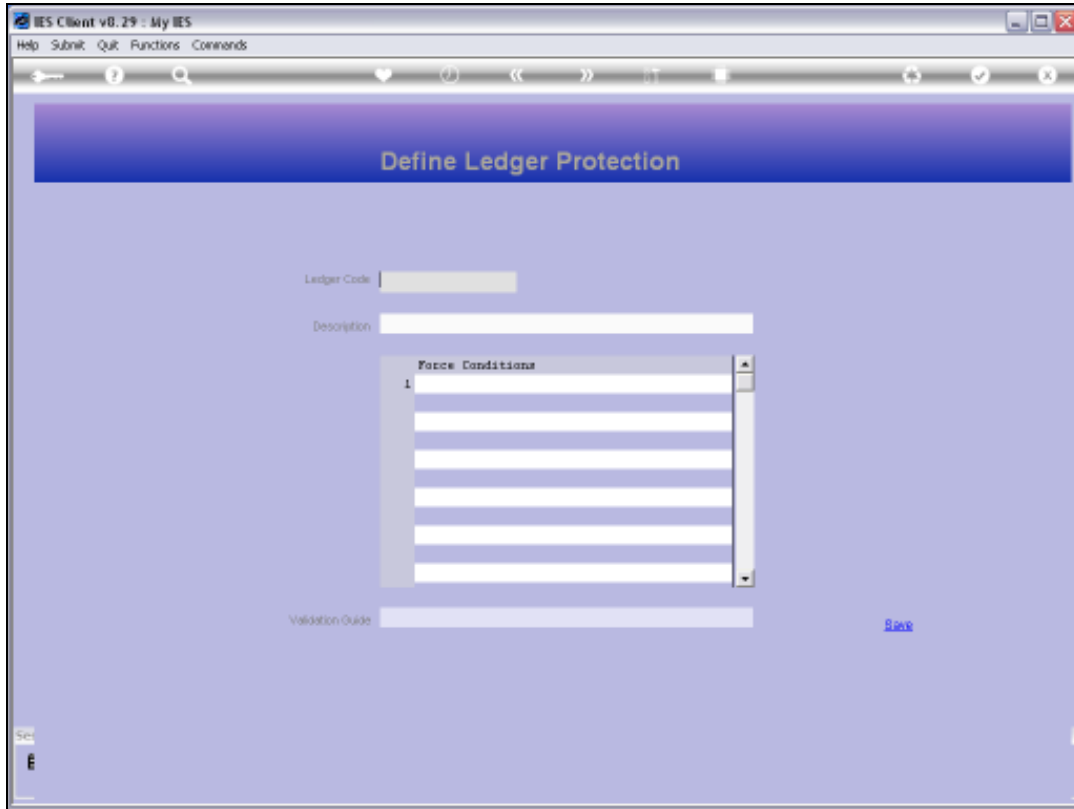
Slide 29

Slide notes:



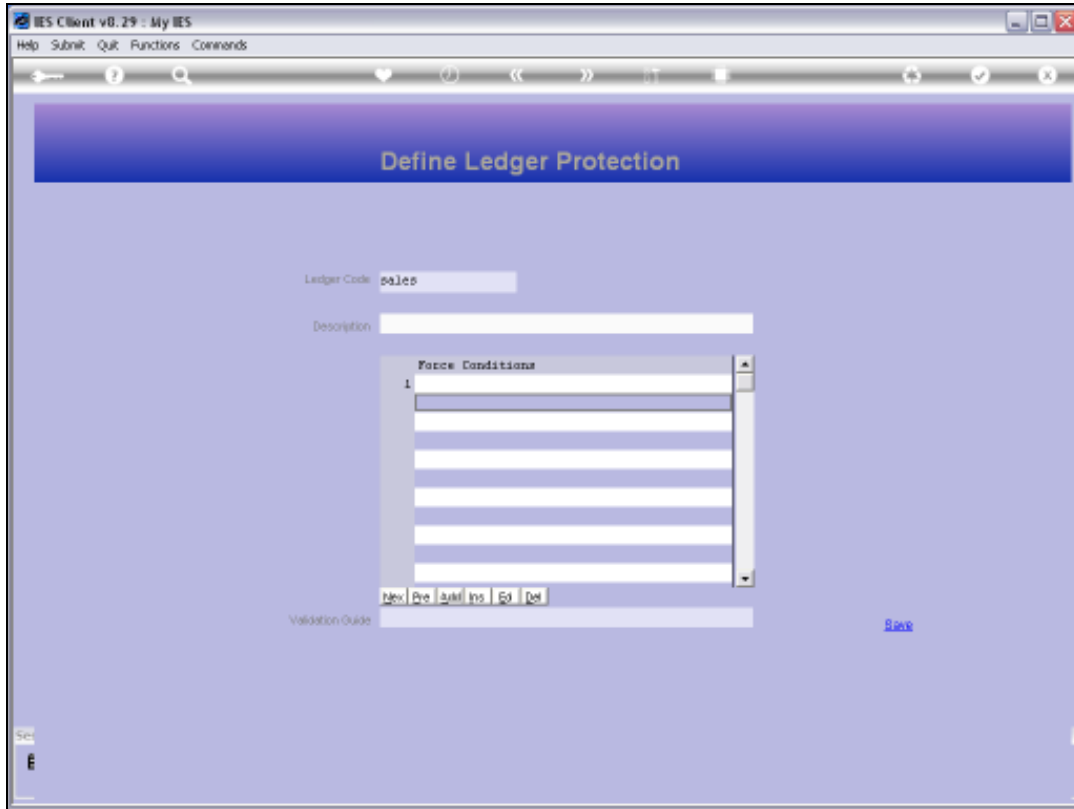
Slide 30

Slide notes:



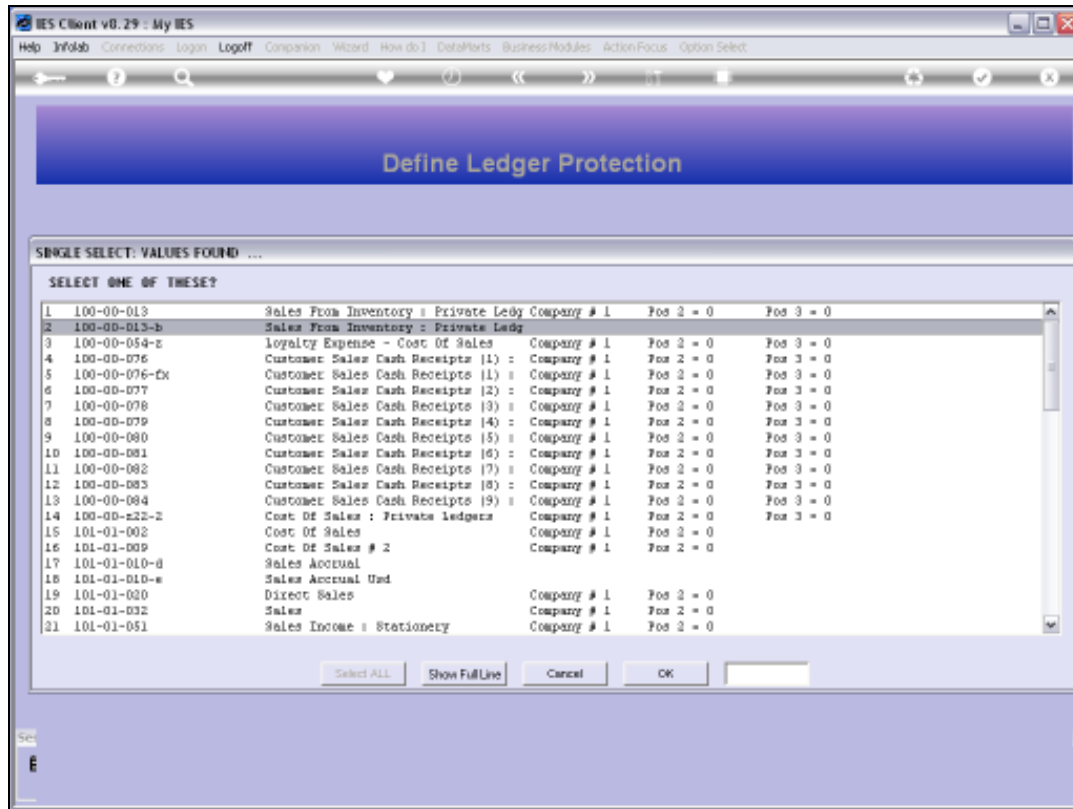
Slide 31

Slide notes:

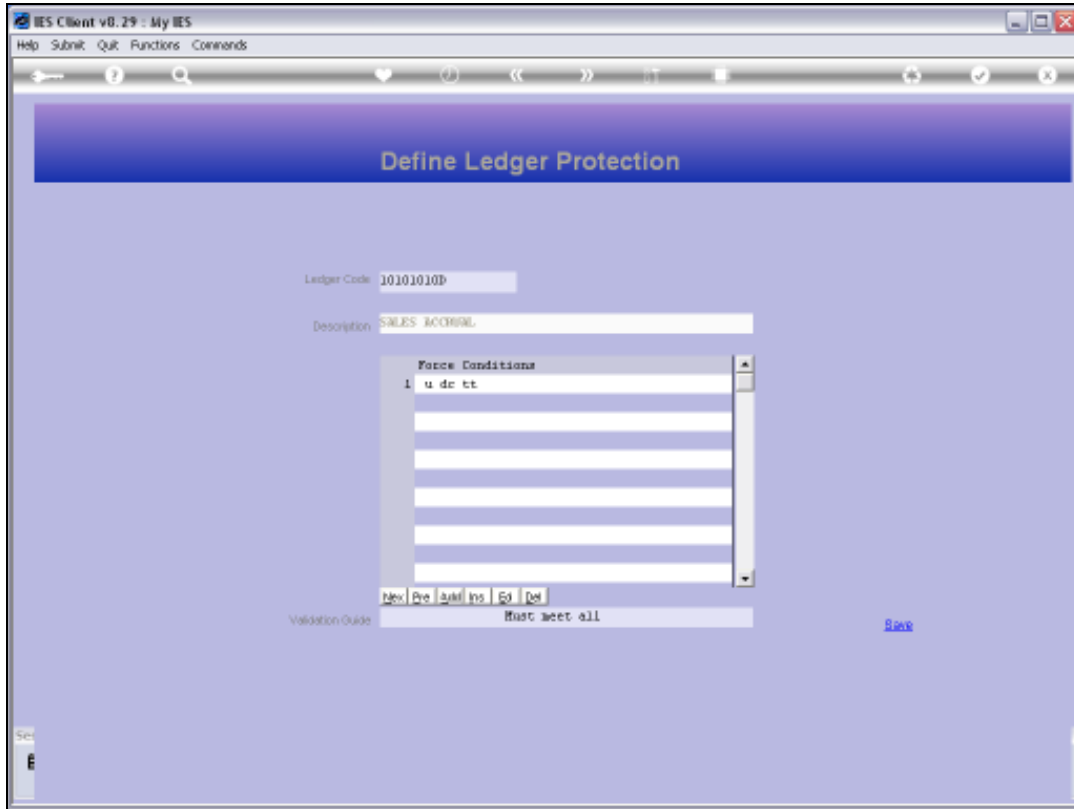


Slide 32

Slide notes:

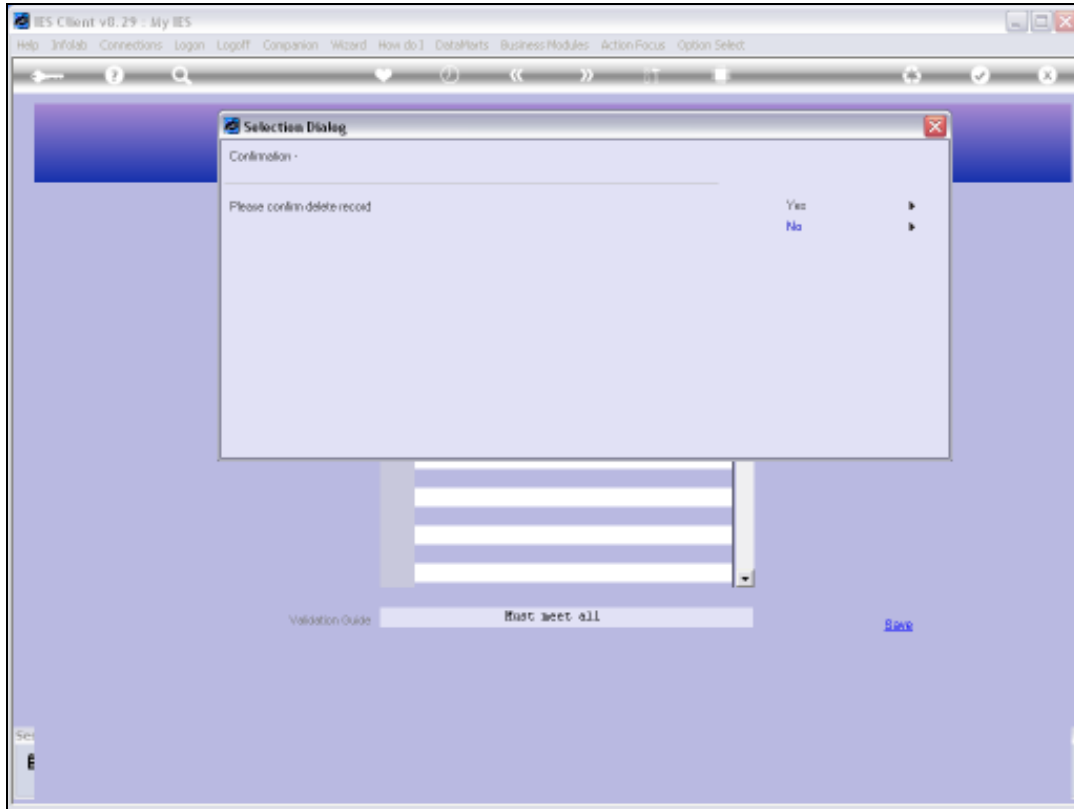


Slide 33
Slide notes:



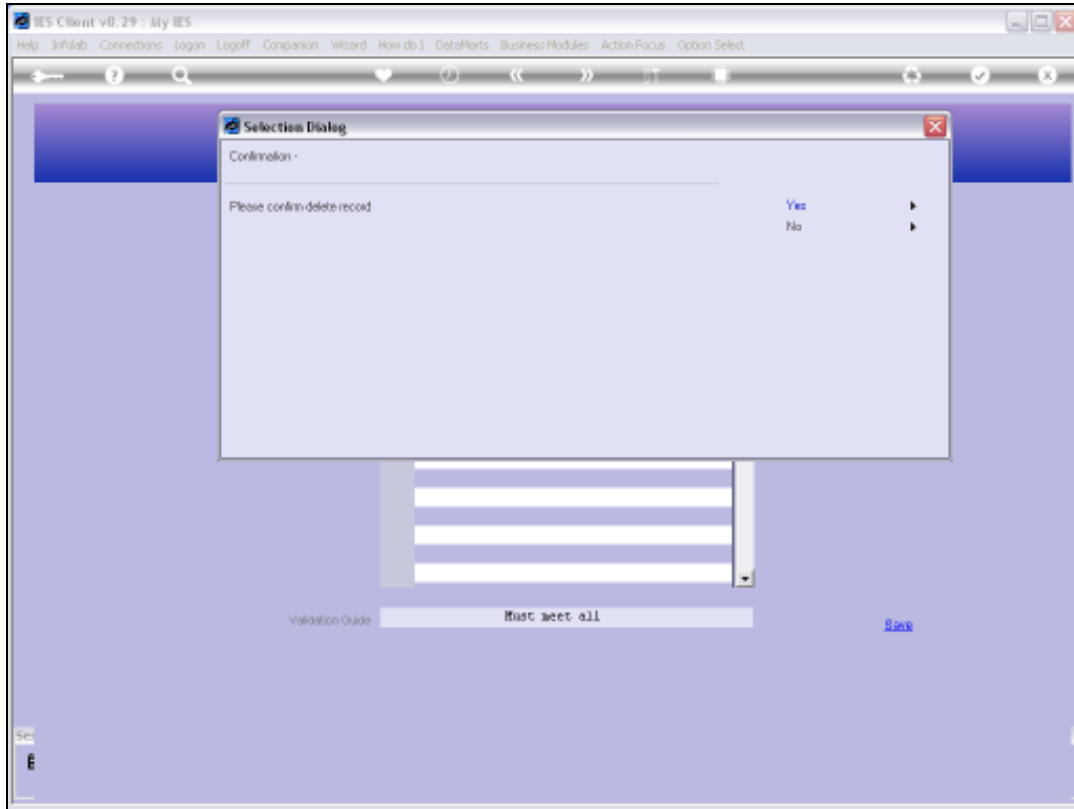
Slide 34

Slide notes: If we wish to remove the Protection Instruction for an Account, then we can retrieve the Instruction, and use the standard delete option.



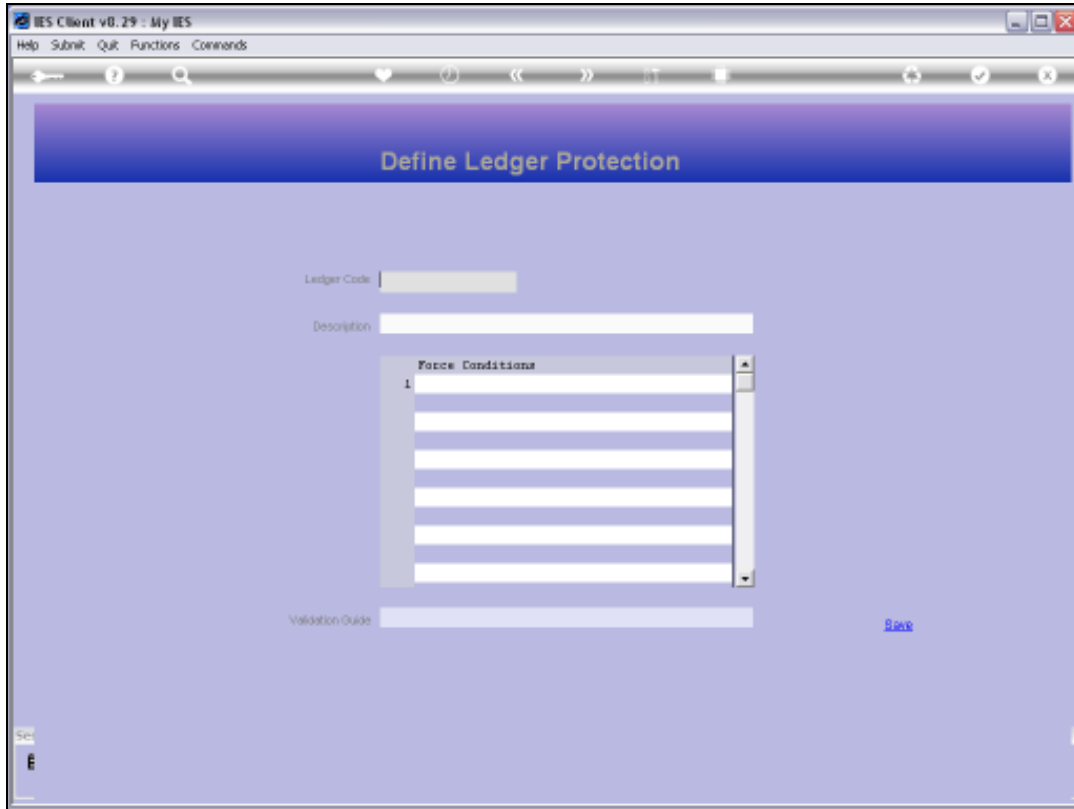
Slide 35

Slide notes:



Slide 36

Slide notes:



Slide 37

Slide notes: