



Slide 1

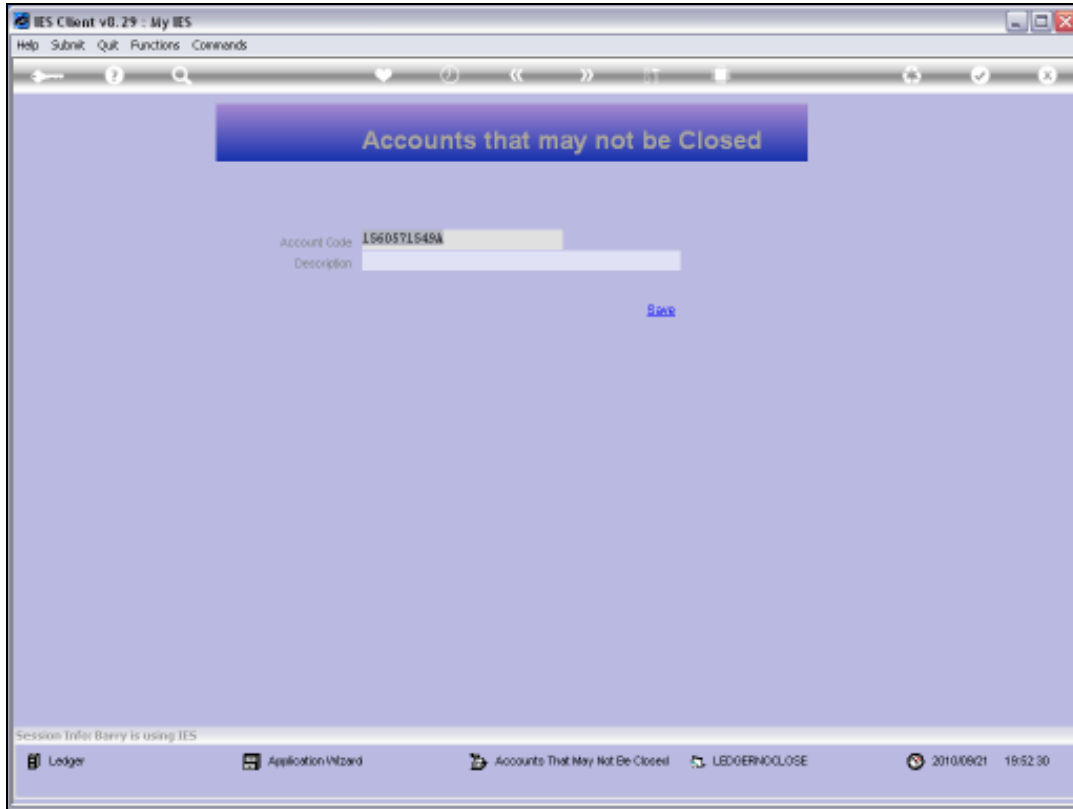
Slide notes: From the Ledger File Maintenance menu we have an option to define 'No Close' Accounts.



Slide 2
Slide notes:

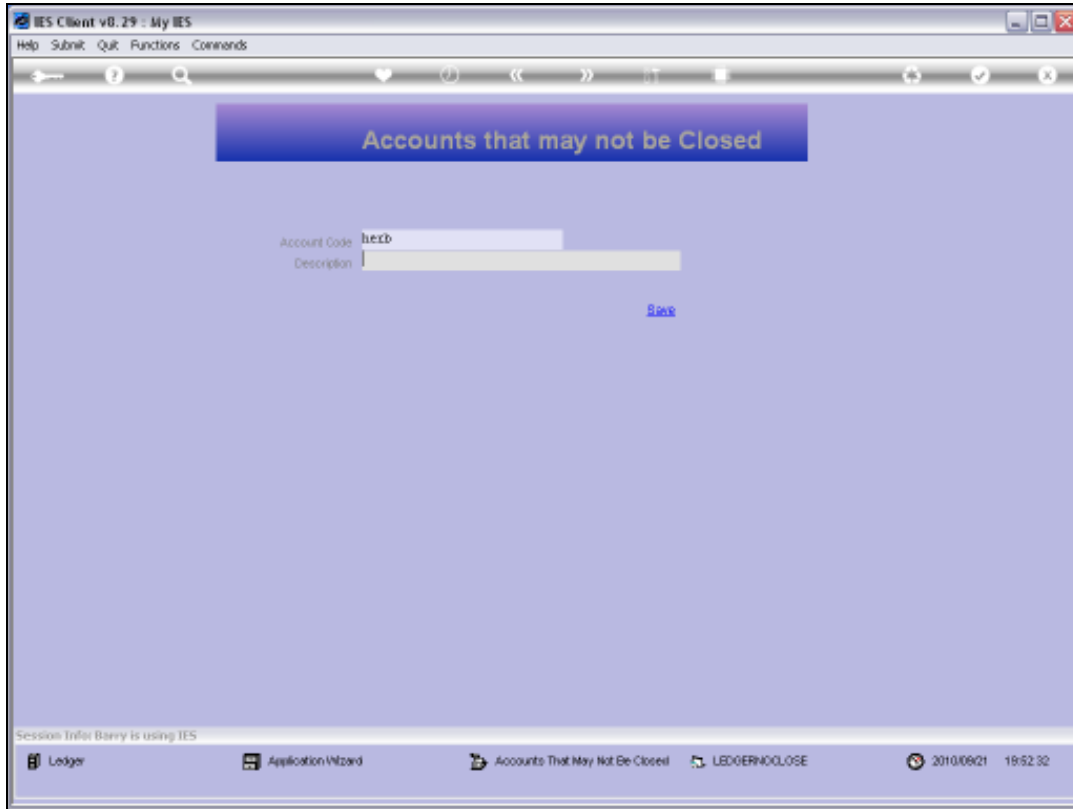


Slide 3
Slide notes:

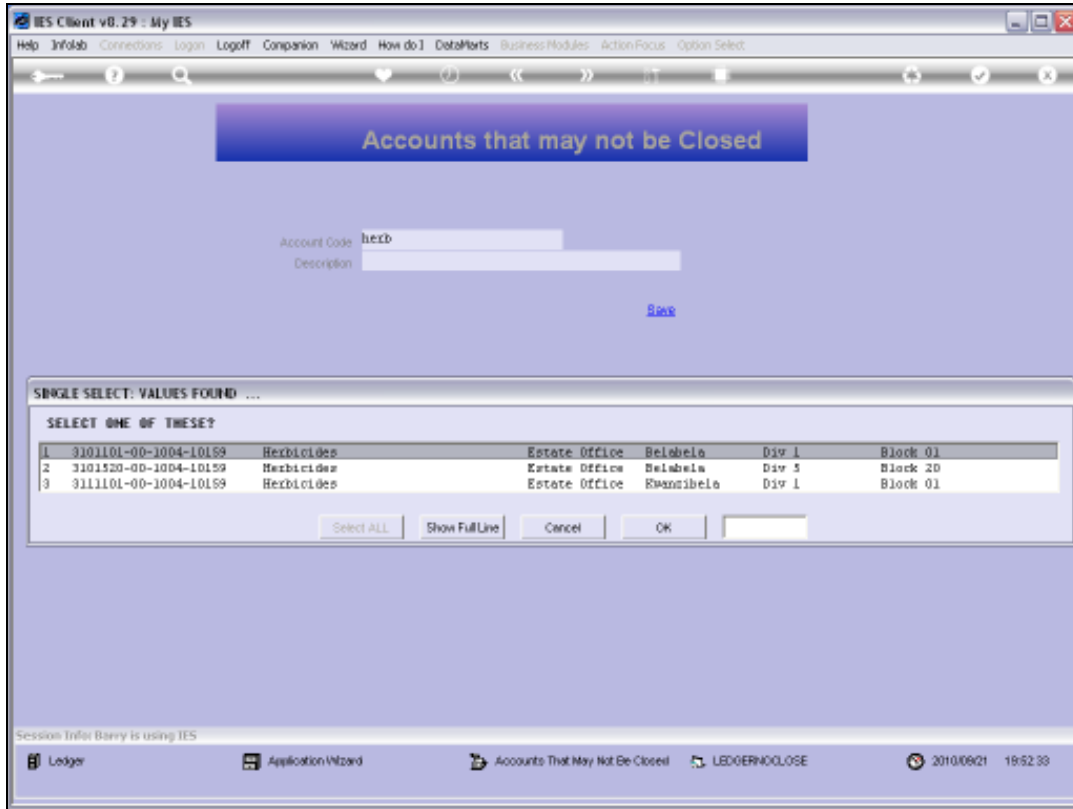


Slide 4

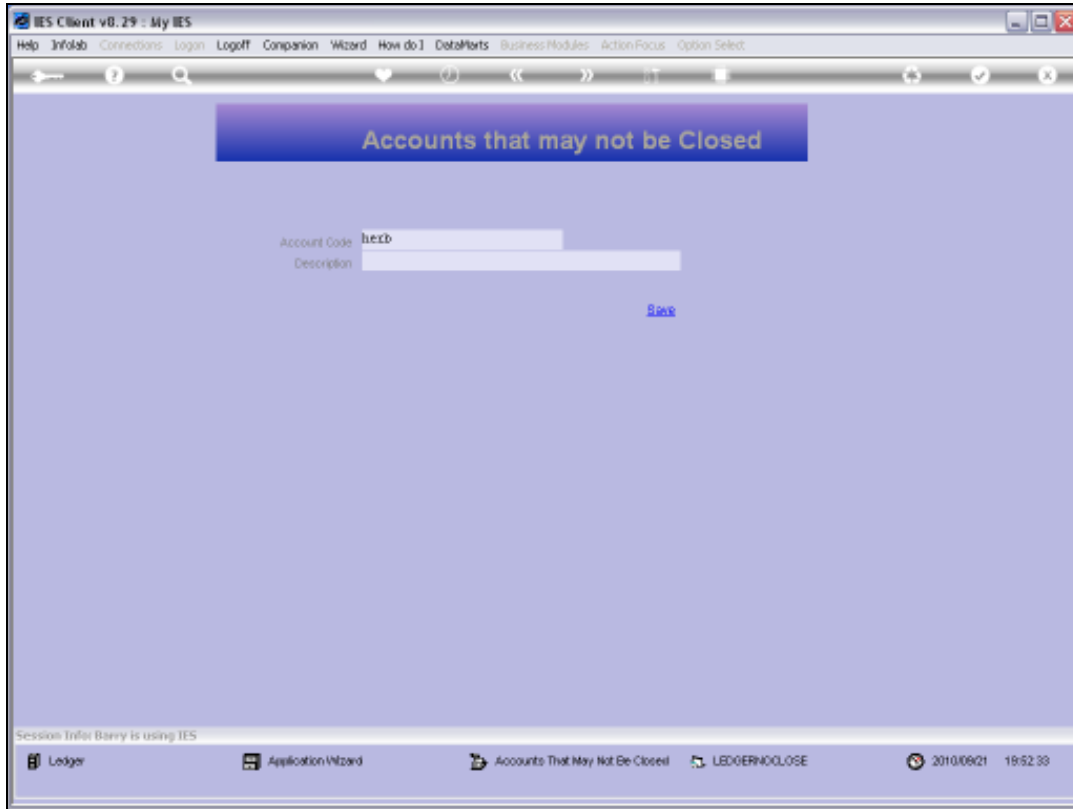
Slide notes: We retrieve a Ledger Account Code with any of the usual Ledger Lookups, and then save the instruction.



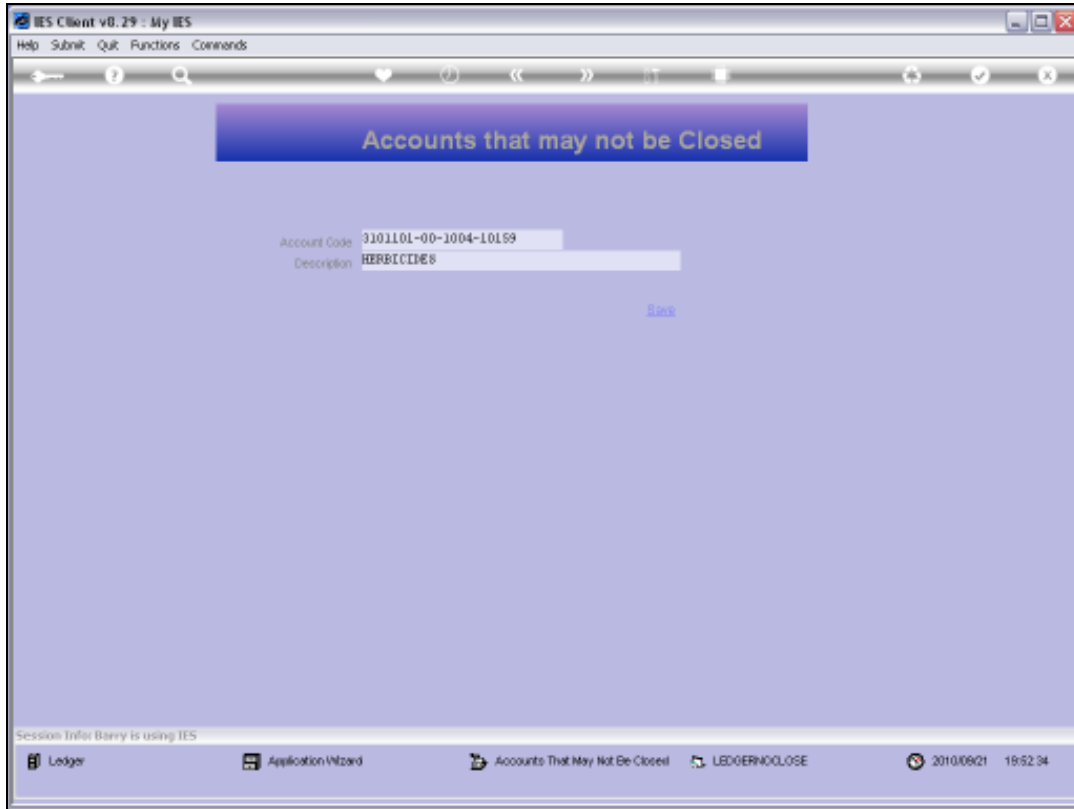
Slide 5
Slide notes:



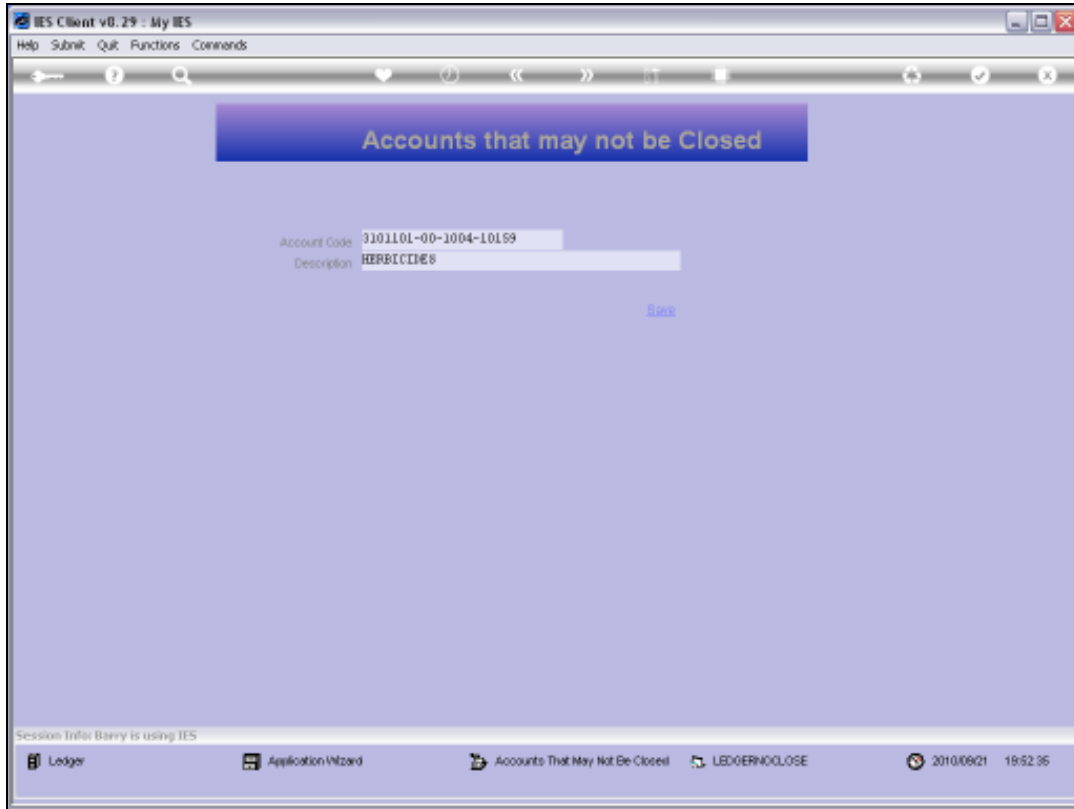
Slide 6
Slide notes:



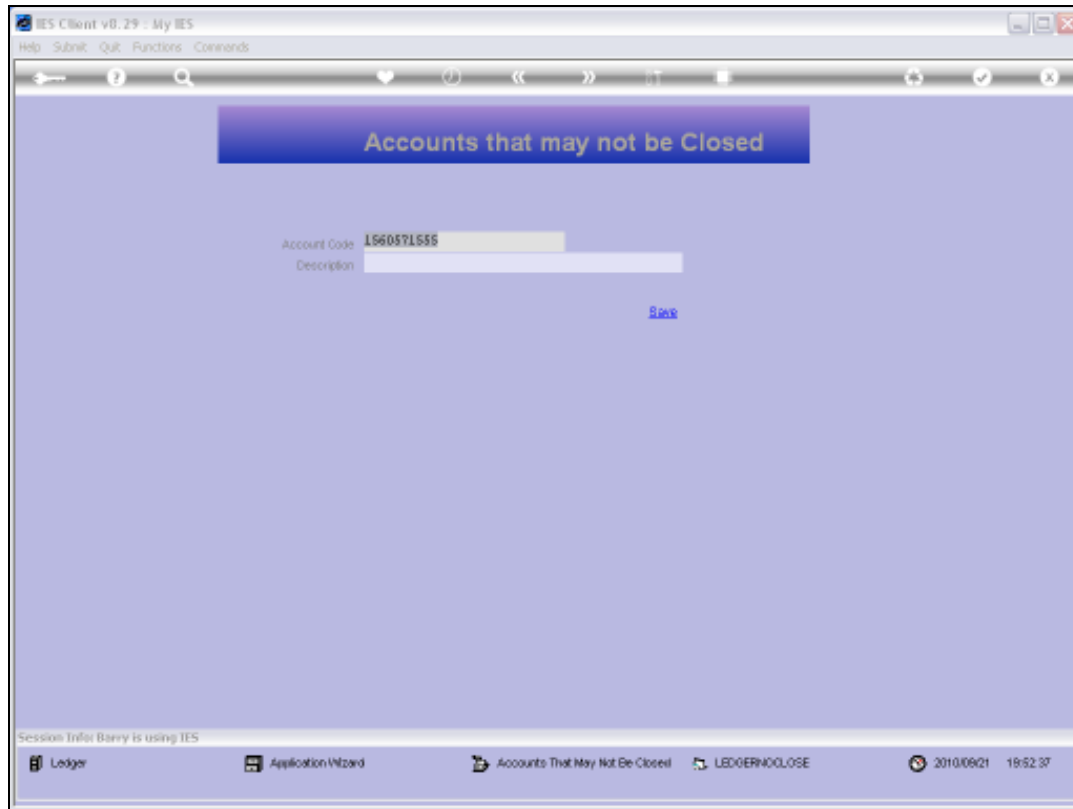
Slide 7
Slide notes:



Slide 8
Slide notes:

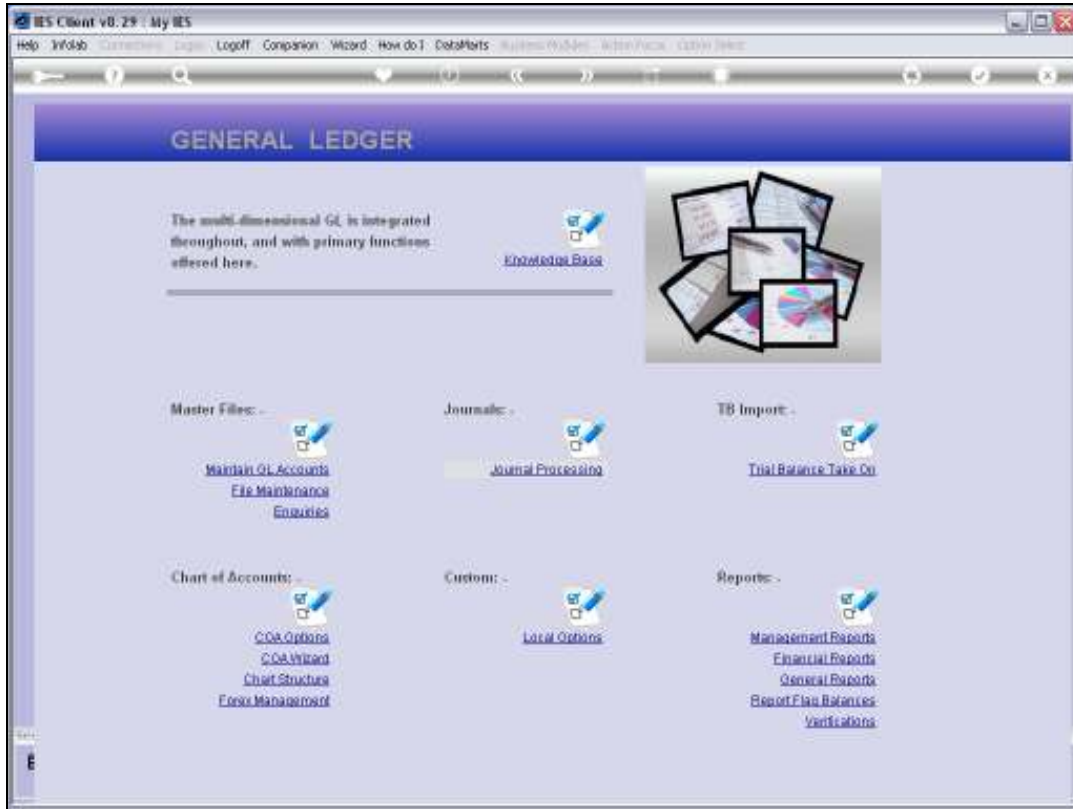


Slide 9
Slide notes:

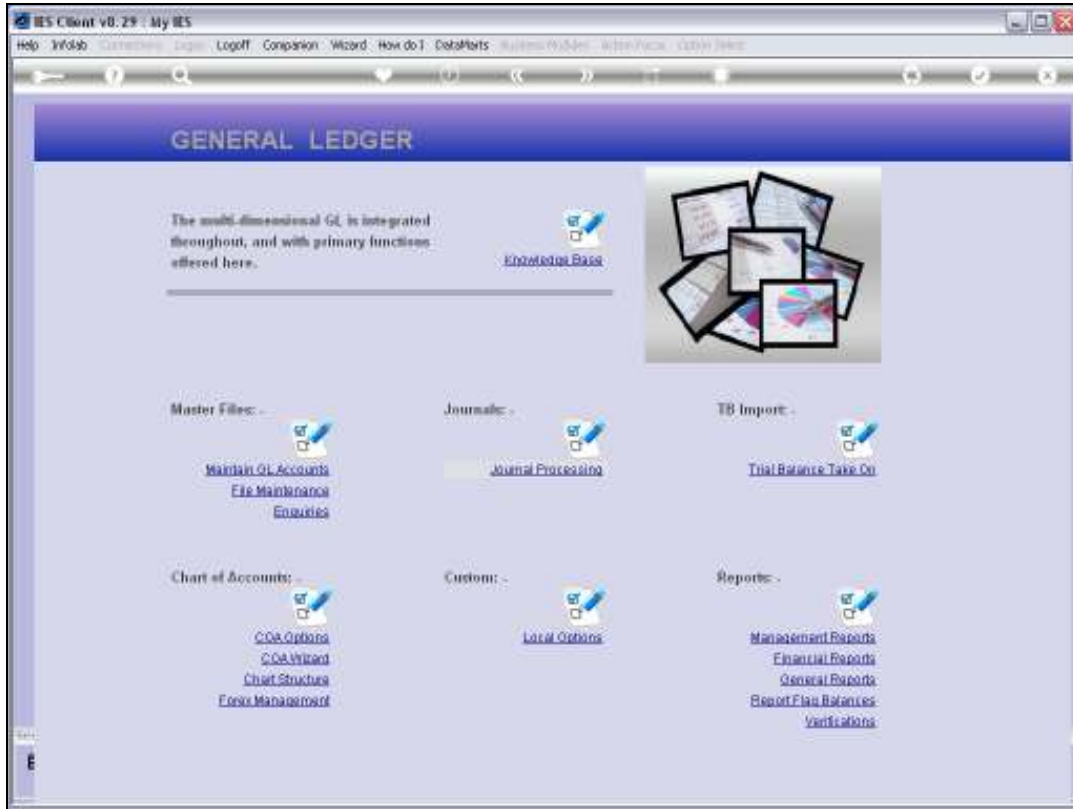


Slide 10

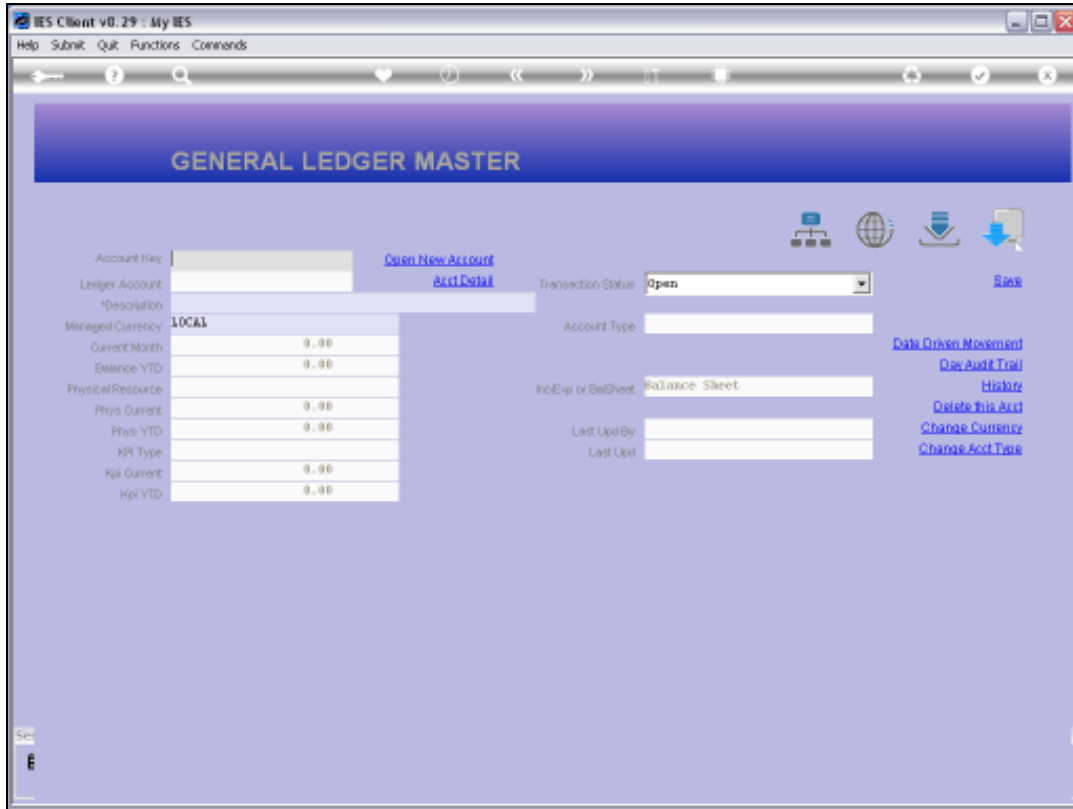
Slide notes: Once we save such an Instruction, then that Account may no longer be closed on the Ledger Master Maintenance screen, and we may save such instructions for any Accounts that we do not want to be allowed to be closed.



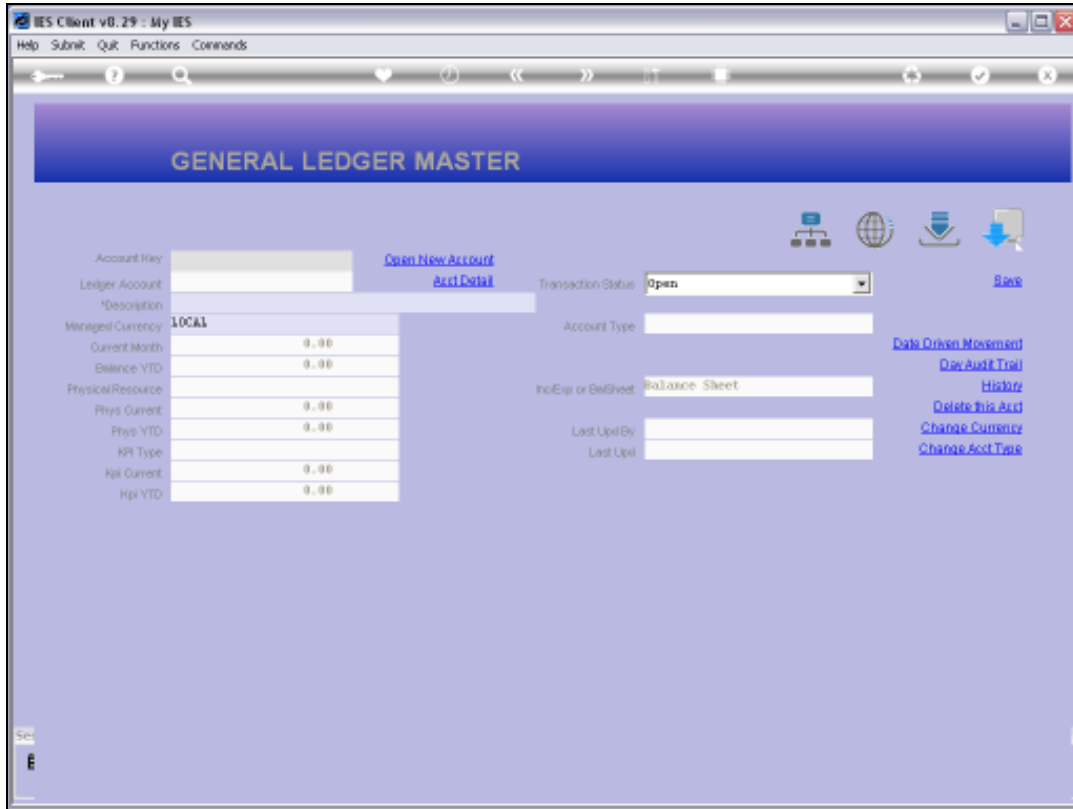
Slide 11
Slide notes:



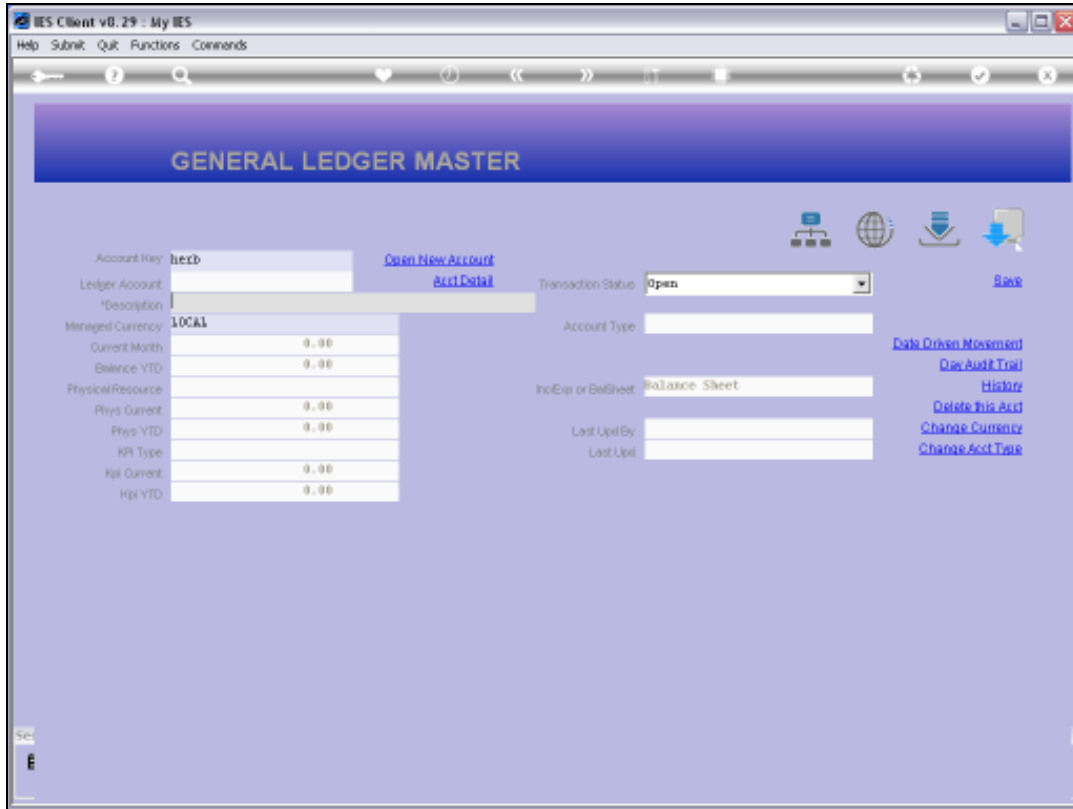
Slide 12
Slide notes:



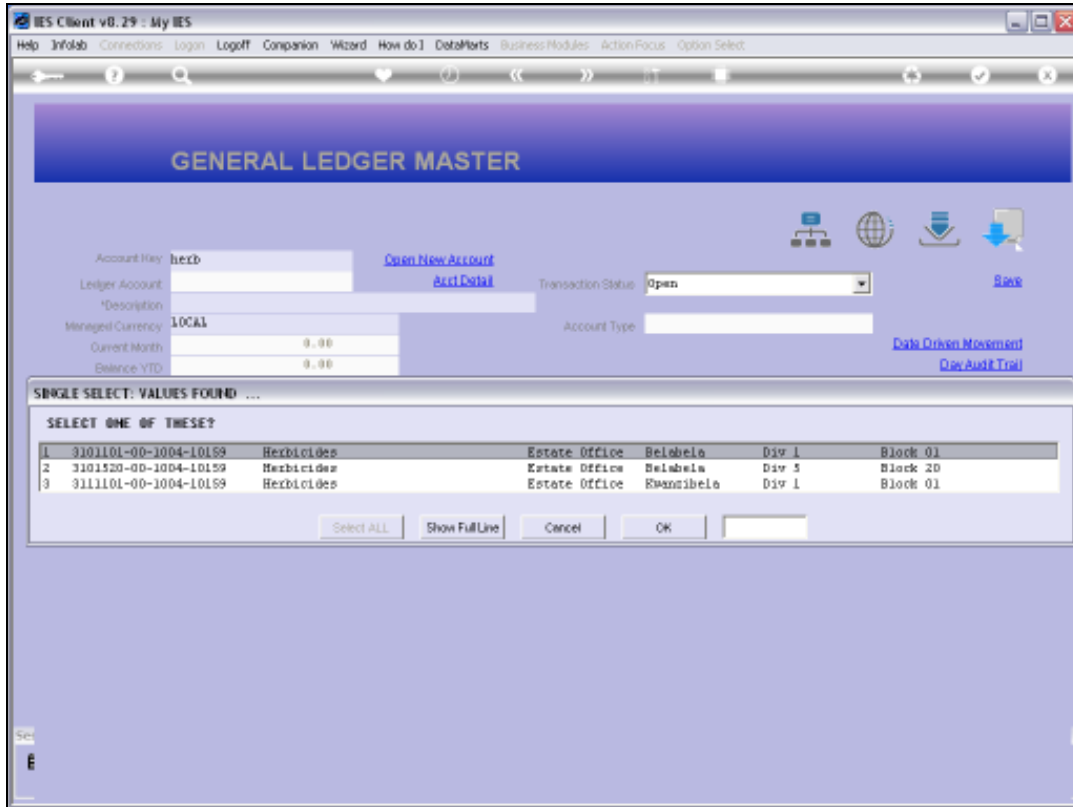
Slide 13
Slide notes:



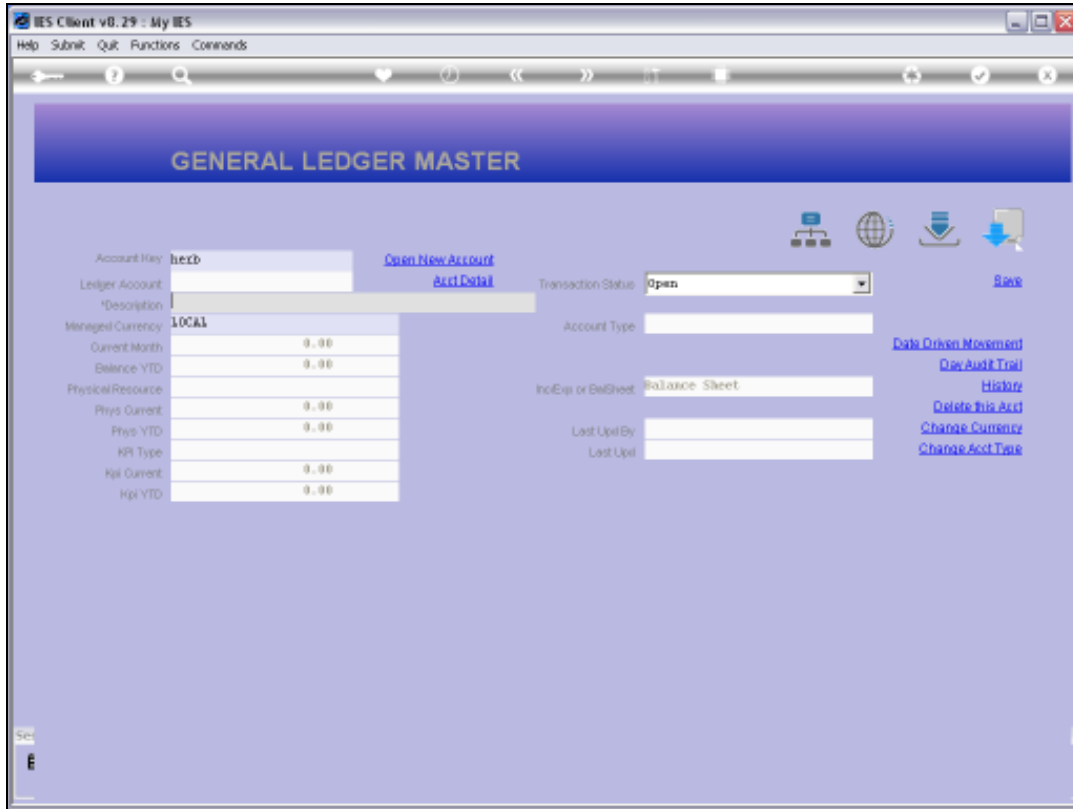
Slide 14
Slide notes:



Slide 15
Slide notes:



Slide 16
Slide notes:



Slide 17
Slide notes:

GENERAL LEDGER MASTER

Account Key: 310110100100410159 [Open New Account](#)
Ledger Account: 3191101-00-1000-10159 [Acct Detail](#)
Description: HERBICIDES
Managed Currency: LOCAL
Transaction Status: Open
Account Type: Open / Closed
Inc/Exp or BalSheet: Income / Expense
Last Upd By: Ruxxy
Last Upd: 21/09/2010

Current Month	0.00
Balance YTD	0.00
Phys Current	0.00
Phys YTD	0.00
Hpl Current	0.00
Hpl YTD	0.00

[Data Drive Movement](#)
[Doc Audit Trail](#)
[History](#)
[Delete This Acct](#)
[Change Currency](#)
[Change Acct Type](#)

income / expense vs budget

Month	Actual	Budget
Jan 2010		
Feb 2010		
Mar 2010		
Apr 2010		
May 2010		
Jun 2010		
Jul 2010		
Aug 2010		
Sep 2010		
Oct 2010		
Nov 2010		
Dec 2010		

Slide 18
Slide notes:

GENERAL LEDGER MASTER

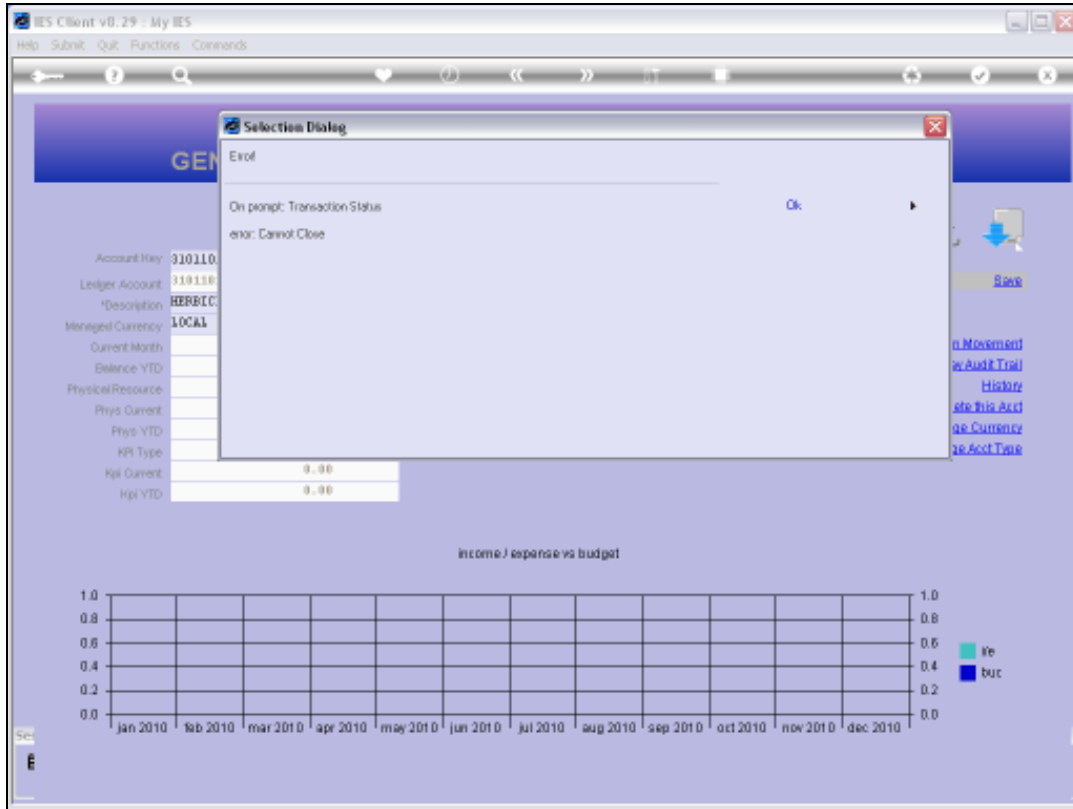
Account Key: 310110100100410159 [Open New Account](#)
Ledger Account: 3191101-00-1000-10159 [Acct Detail](#) Transaction Status: **Closed** [Save](#)
Description: **HERBICIDES**
Managed Currency: **LOCAL** Account Type: **L1 Ledger**
Current Month: 0.00
Balance YTD: 0.00
Physical Resource: **Income / Expense**
Phys Current: 0.00
Phys YTD: 0.00
HPI Type: **ROXY**
HPI Current: 0.00
HPI YTD: 0.00
Last Upd By: **ROXY**
Last Upd: **21/09/2010**

[Data Drive Movement](#)
[Doc Audit Trail](#)
[History](#)
[Delete This Acct](#)
[Change Currency](#)
[Change Acct Type](#)

income / expense vs budget

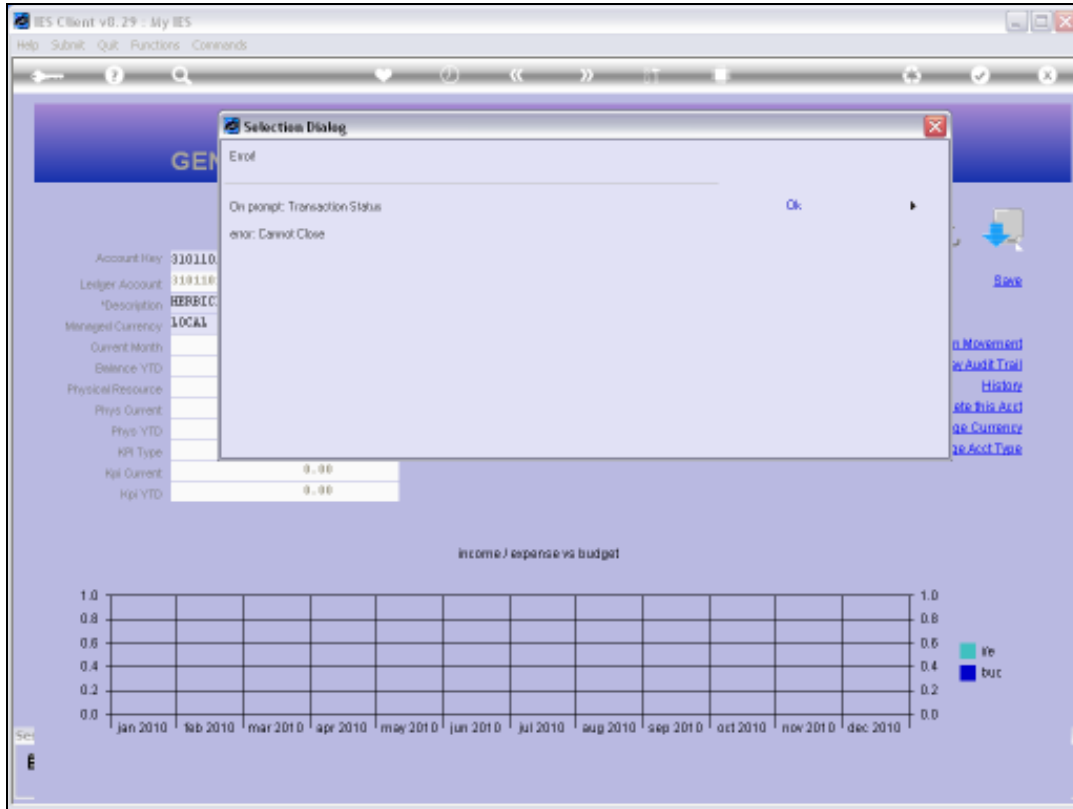
Month	Actual	Budget
Jan 2010		
Feb 2010		
Mar 2010		
Apr 2010		
May 2010		
Jun 2010		
Jul 2010		
Aug 2010		
Sep 2010		
Oct 2010		
Nov 2010		
Dec 2010		

Slide 19
Slide notes:



Slide 20

Slide notes: Closing of the Account is not allowed.



Slide 21
Slide notes:

GENERAL LEDGER MASTER

Account Key: 310110100100410159 [Open New Account](#)
Ledger Account: 3191101-00-1000-10159 [Acct Detail](#) Transaction Status: **Closed** [Save](#)
Description: **HERBICIDES**
Managed Currency: **LOCAL** Account Type: **L1 Ledger**
Current Month: 0.00
Balance YTD: 0.00
Physical Resource: **Income / Expense**
Phys Current: 0.00
Phys YTD: 0.00
Hpl Type: **ROXY**
Hpl Current: 0.00
Hpl YTD: 0.00
Last Upd By: **ROXY**
Last Upd: **21/09/2010**

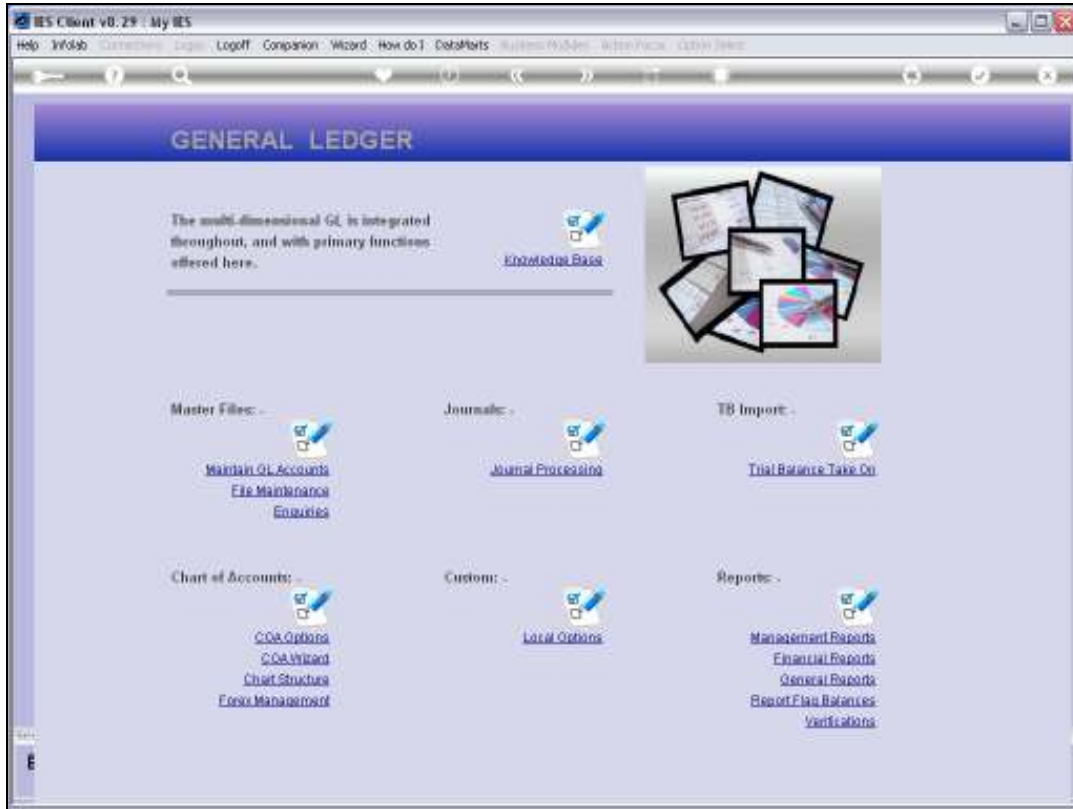
[Data Drive Movement](#)
[Doc Audit Trail](#)
[History](#)
[Delete This Acct](#)
[Change Currency](#)
[Change Acct Type](#)

income / expense vs budget

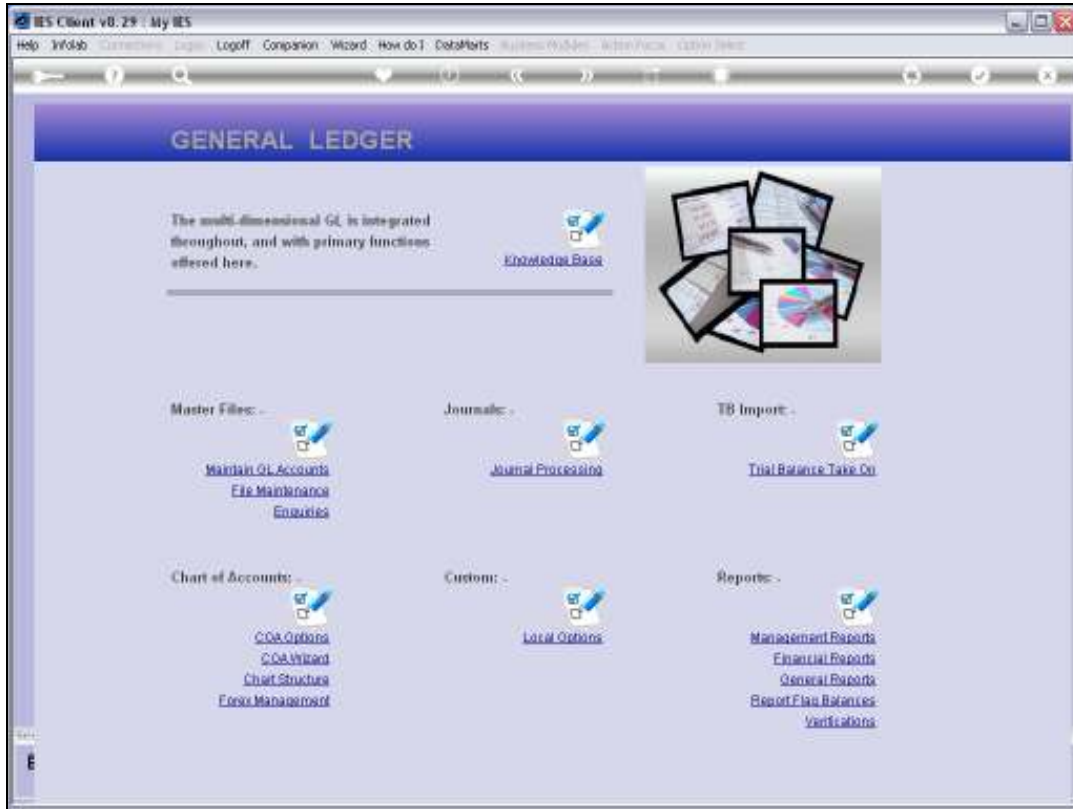
Month	1.0	0.8	0.6	0.4	0.2	0.0
Jan 2010						
Feb 2010						
Mar 2010						
Apr 2010						
May 2010						
Jun 2010						
Jul 2010						
Aug 2010						
Sep 2010						
Oct 2010						
Nov 2010						
Dec 2010						

Legend: ■ inc ■ exp

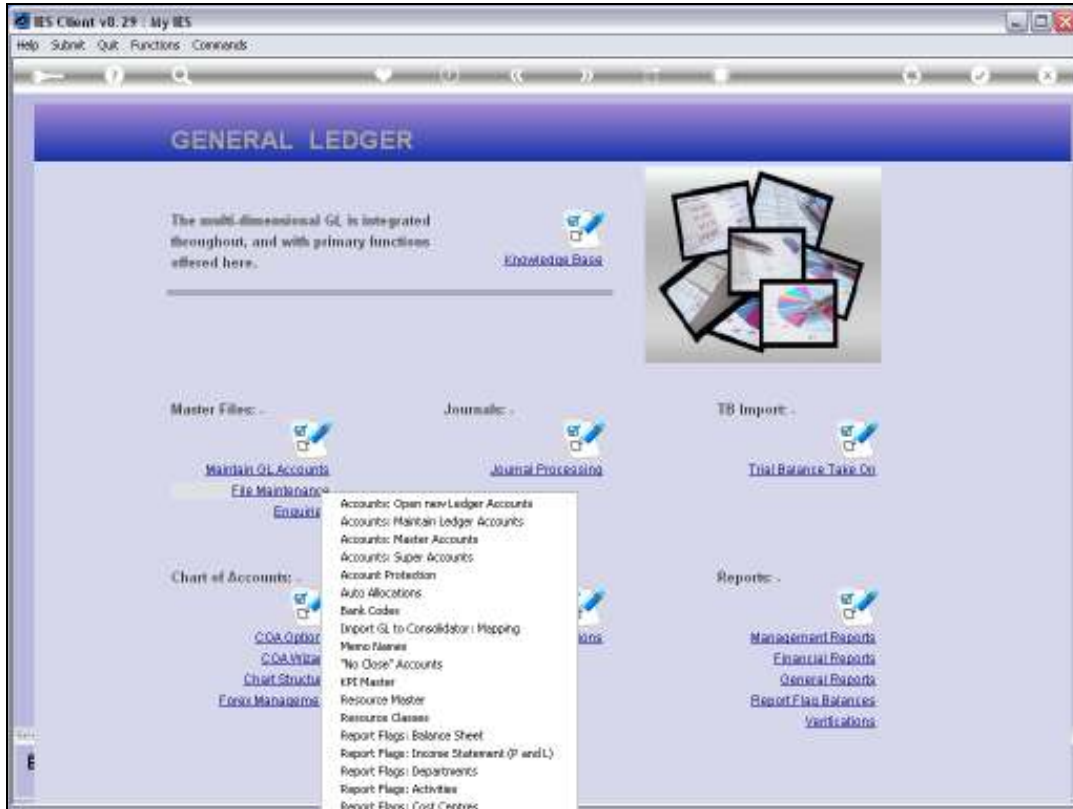
Slide 22
Slide notes:



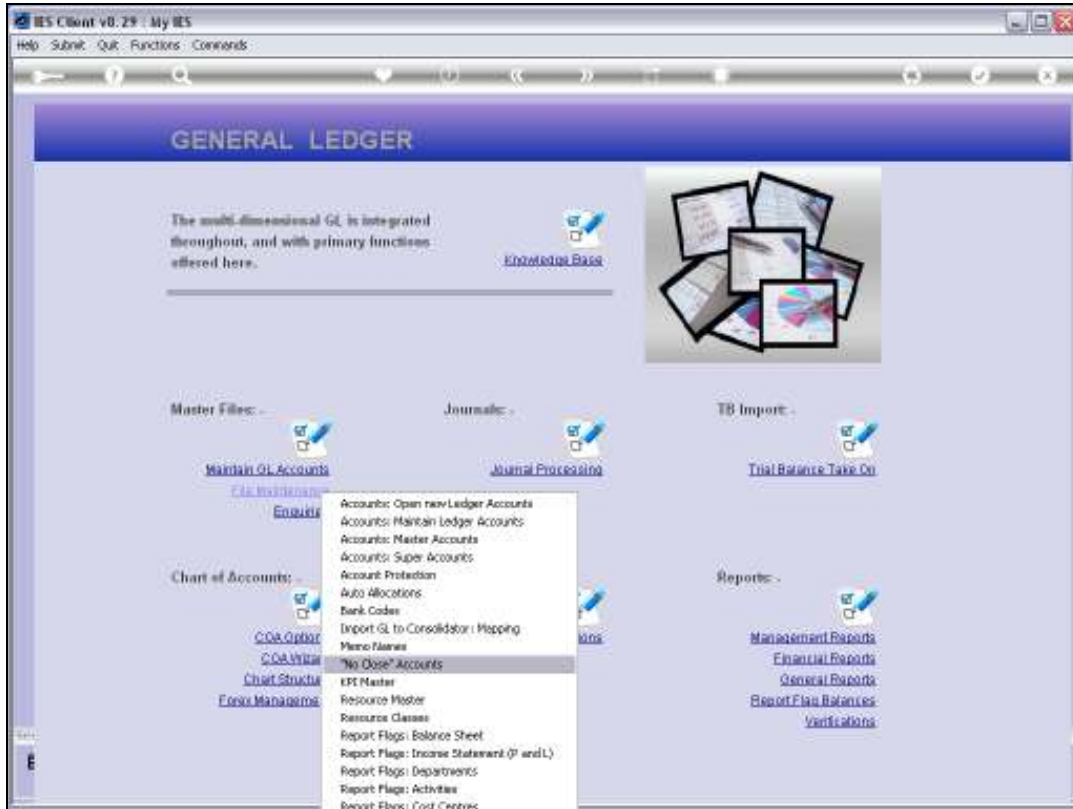
Slide 23
Slide notes:



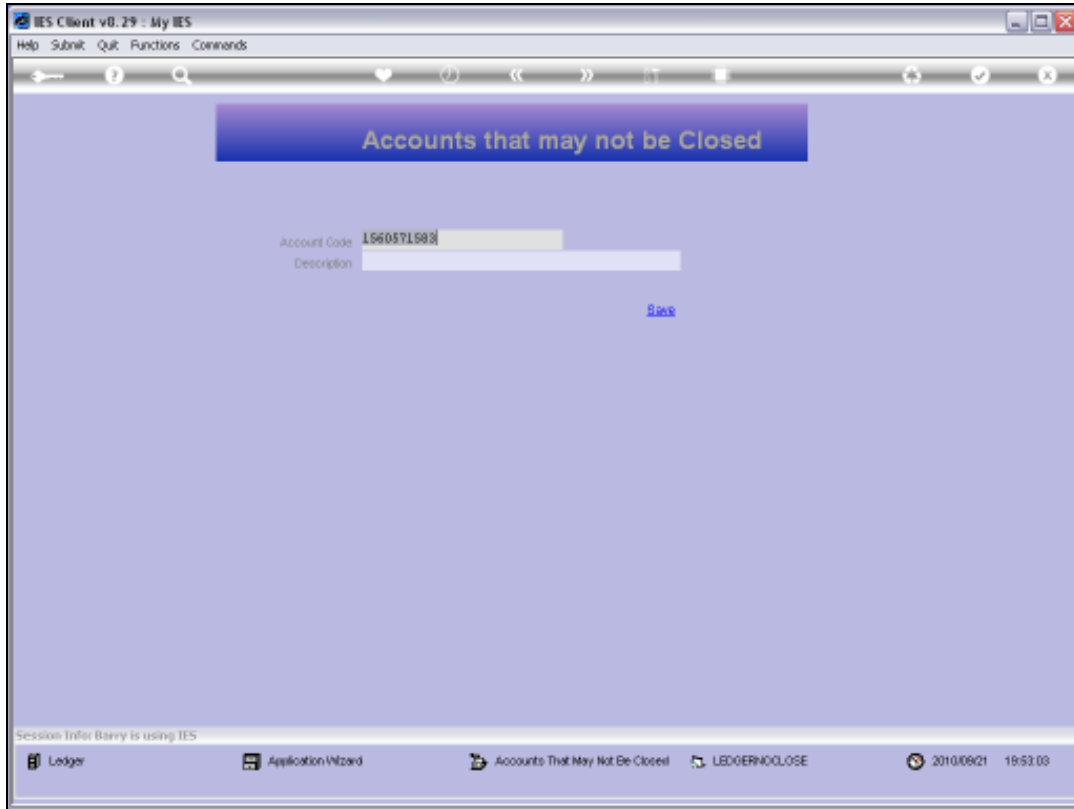
Slide 24
Slide notes:



Slide 25
Slide notes:

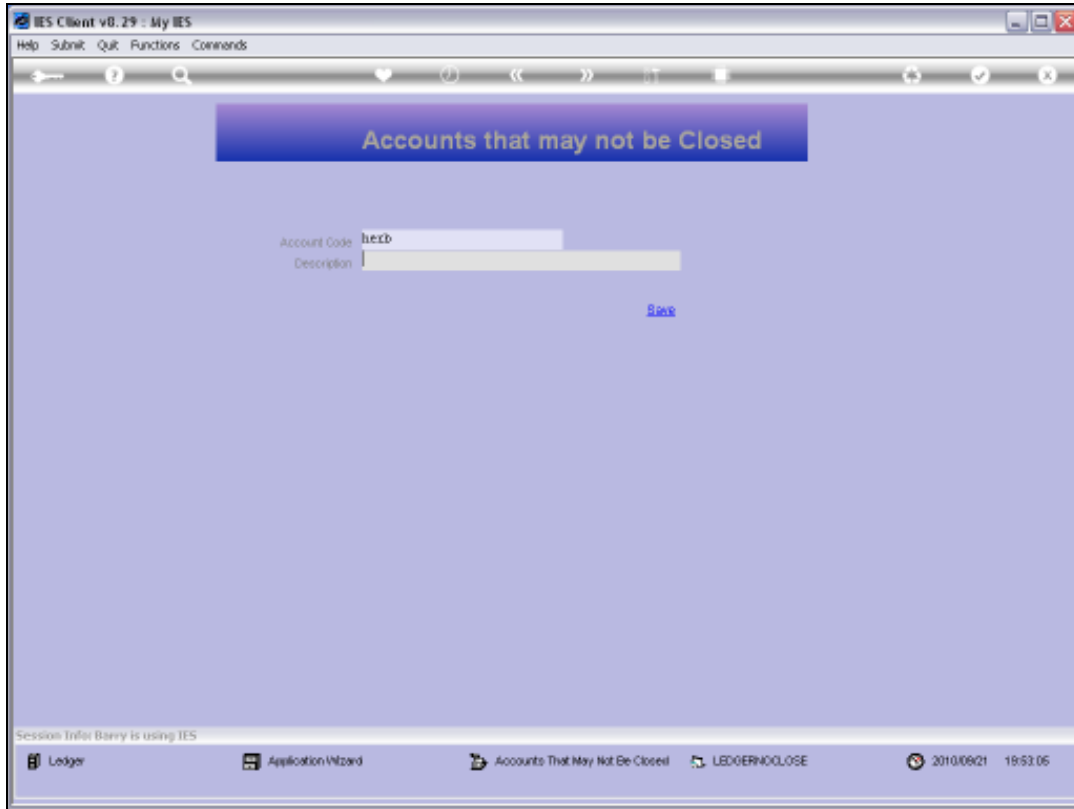


Slide 26
Slide notes:



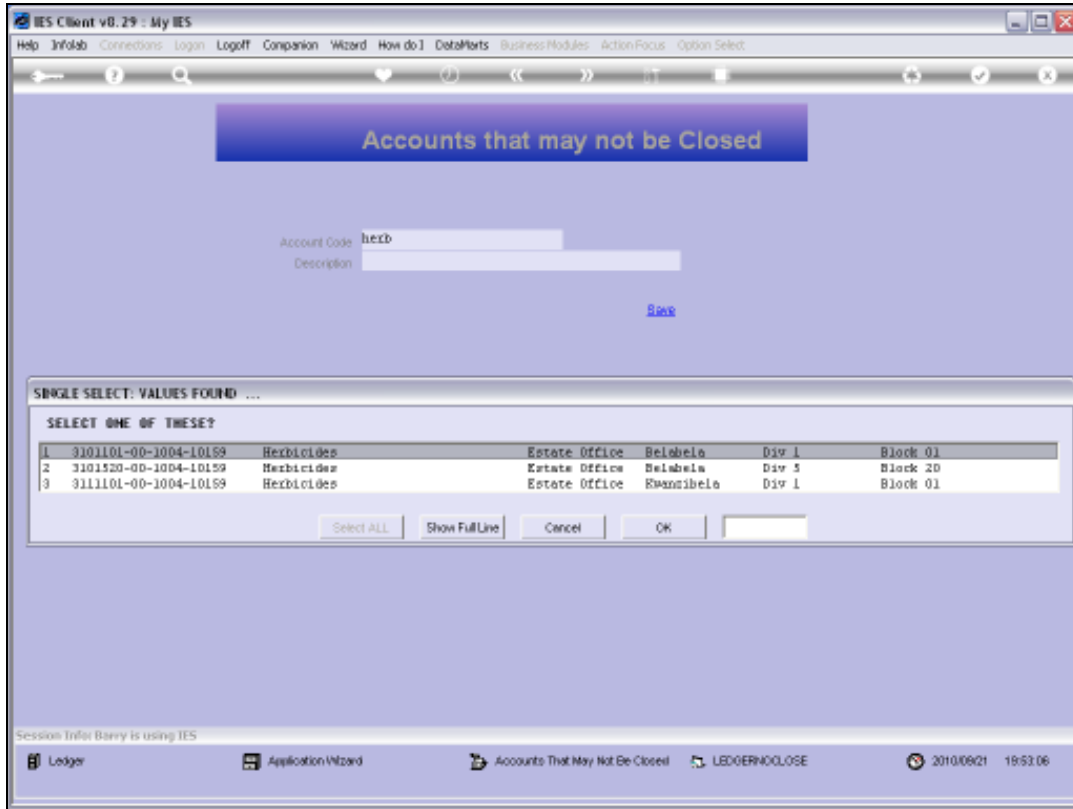
Slide 27

Slide notes:

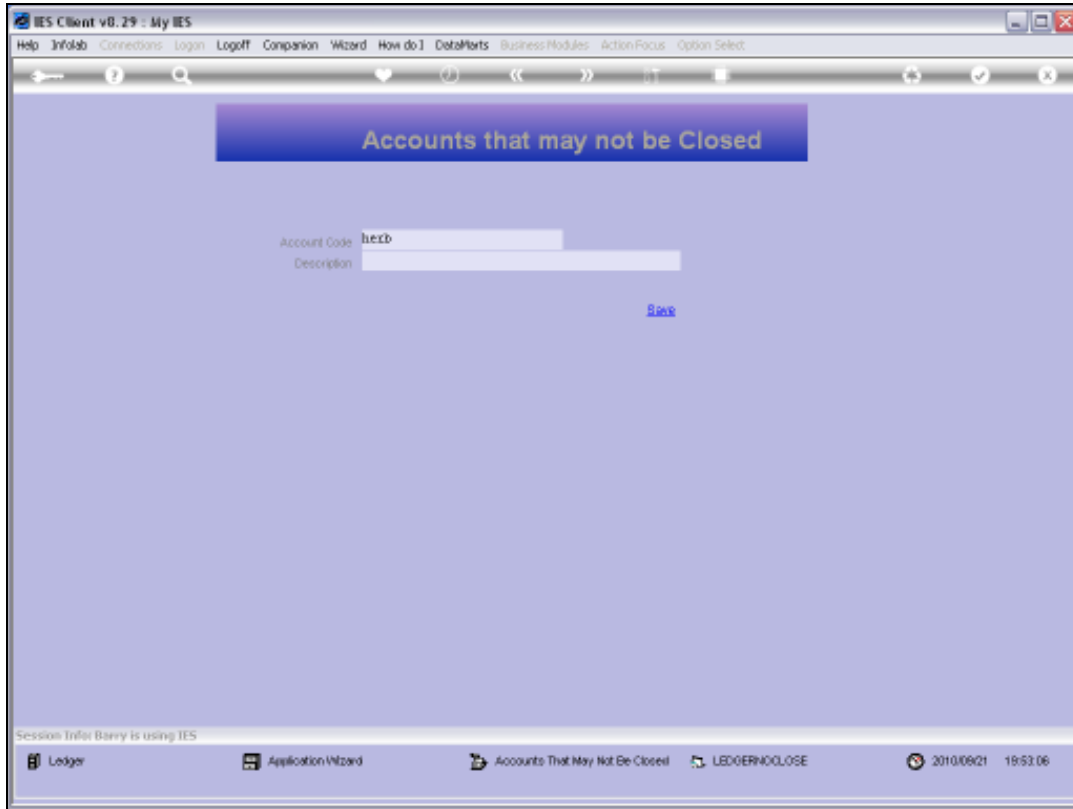


Slide 28

Slide notes:

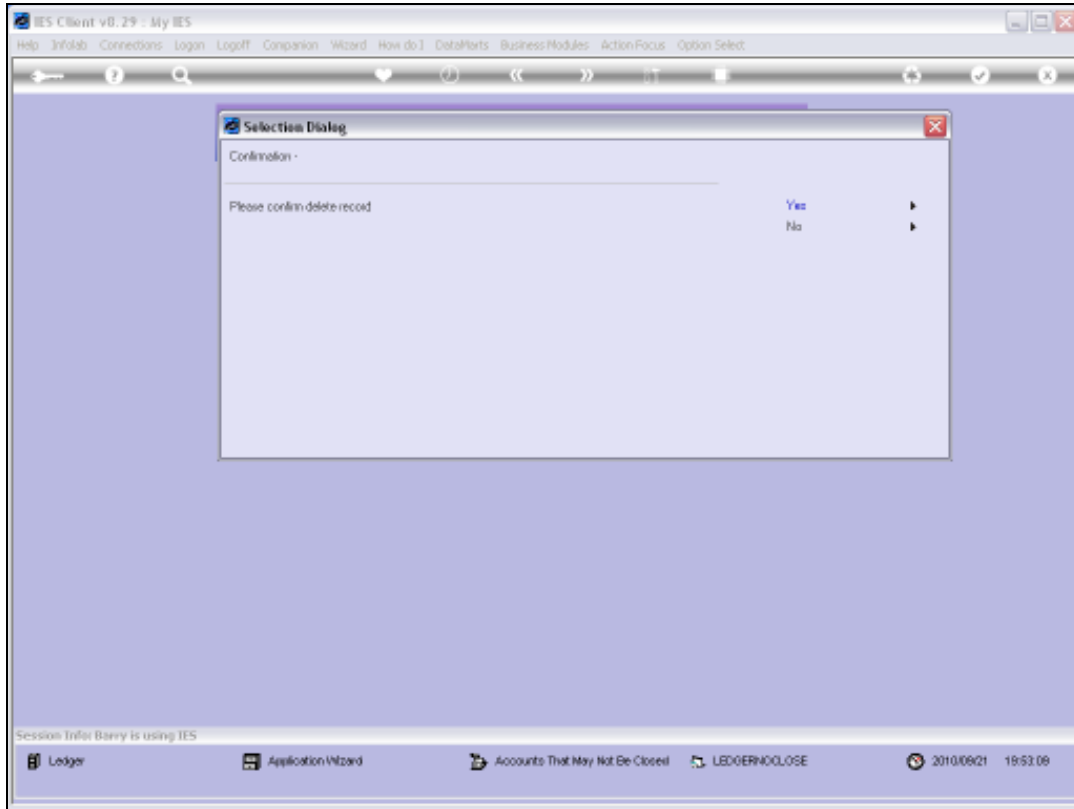


Slide 29
Slide notes:



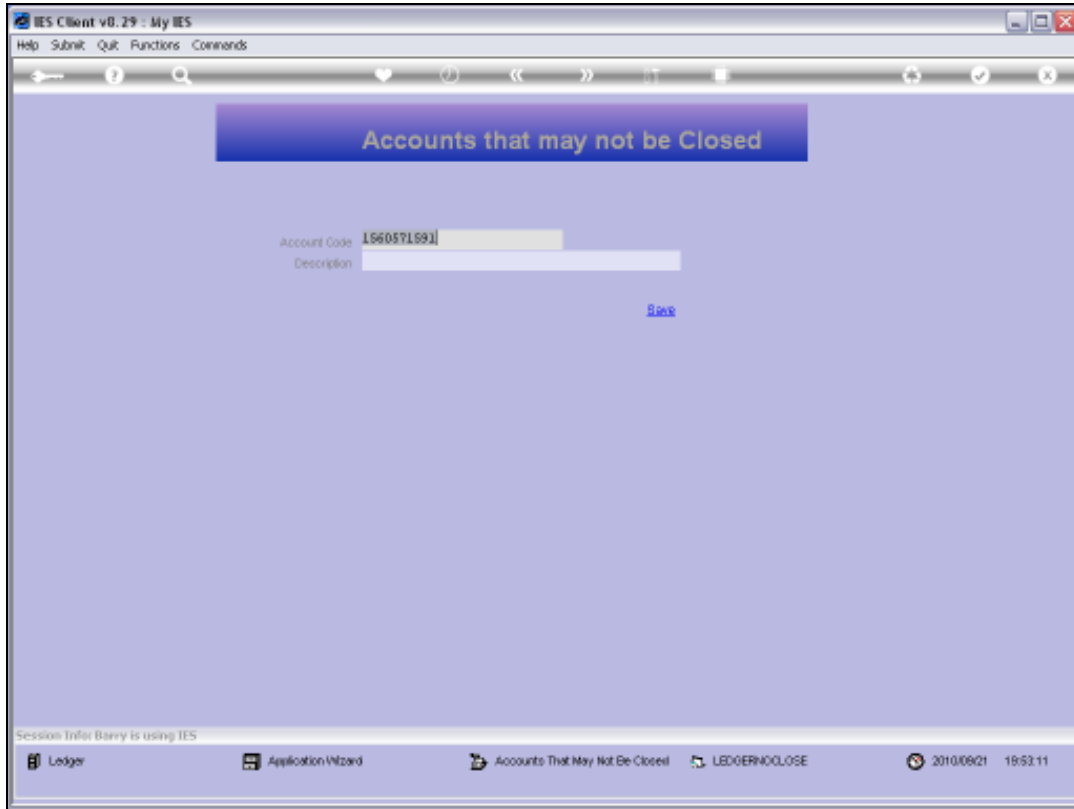
Slide 30

Slide notes: A "No Close" instruction may be deleted with the standard delete function.



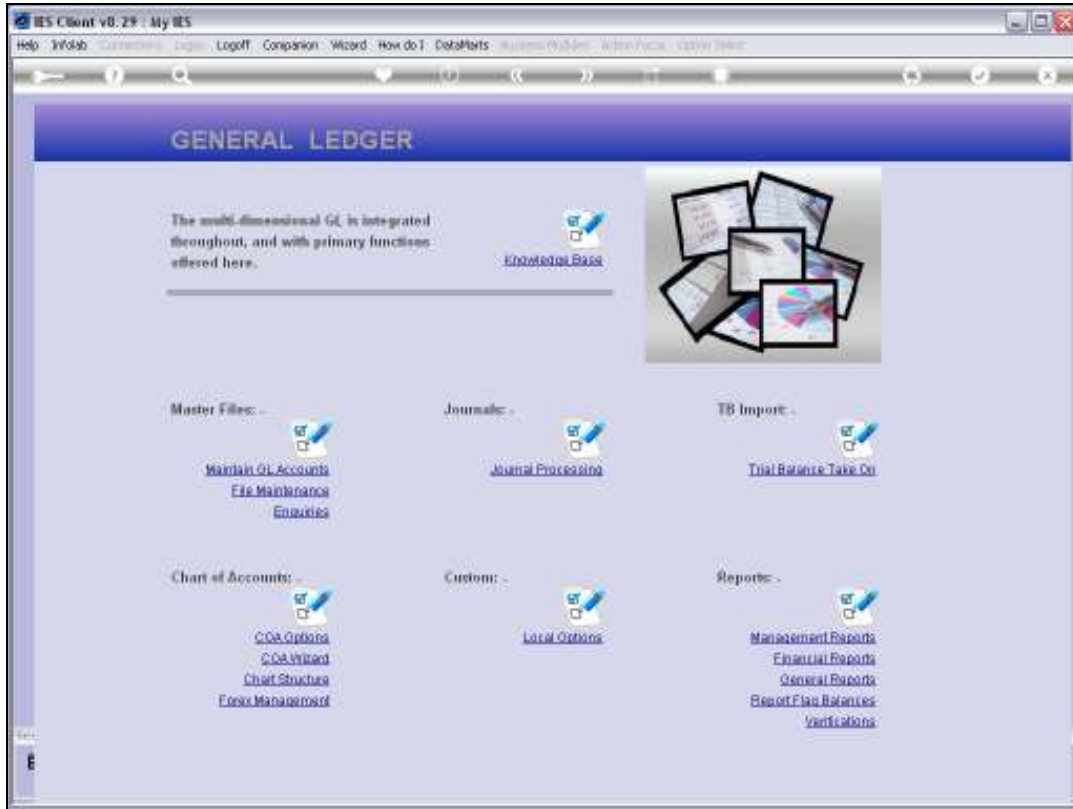
Slide 31

Slide notes:

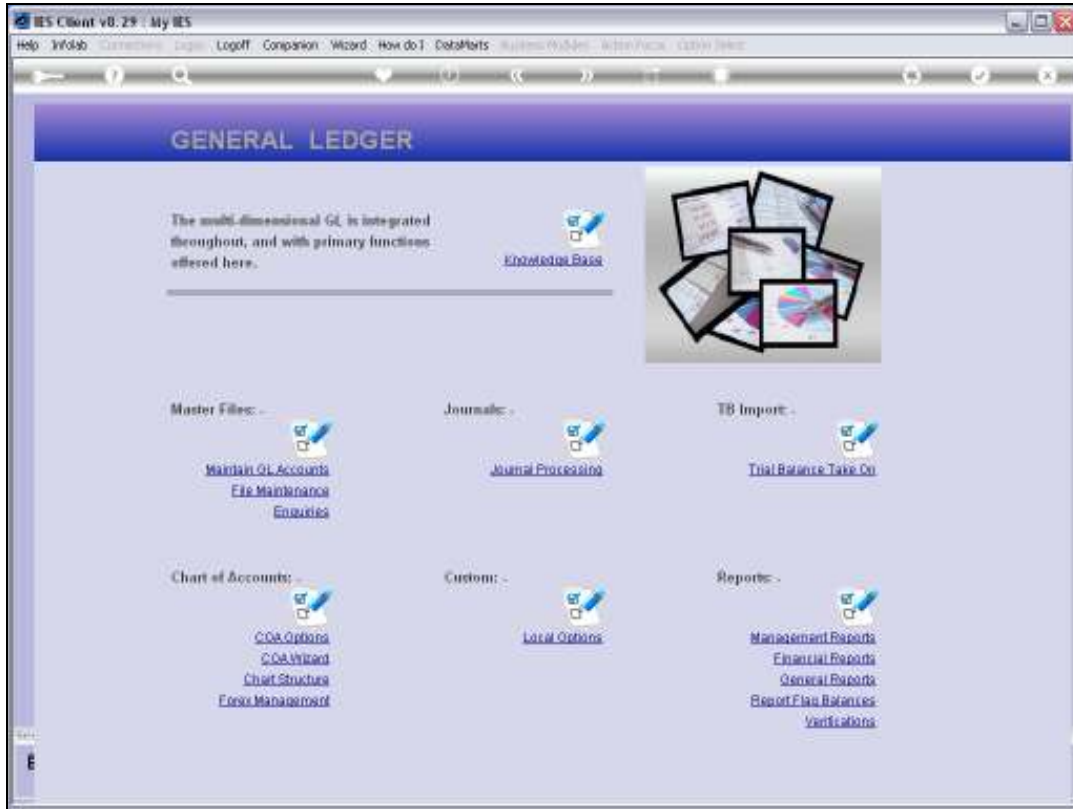


Slide 32

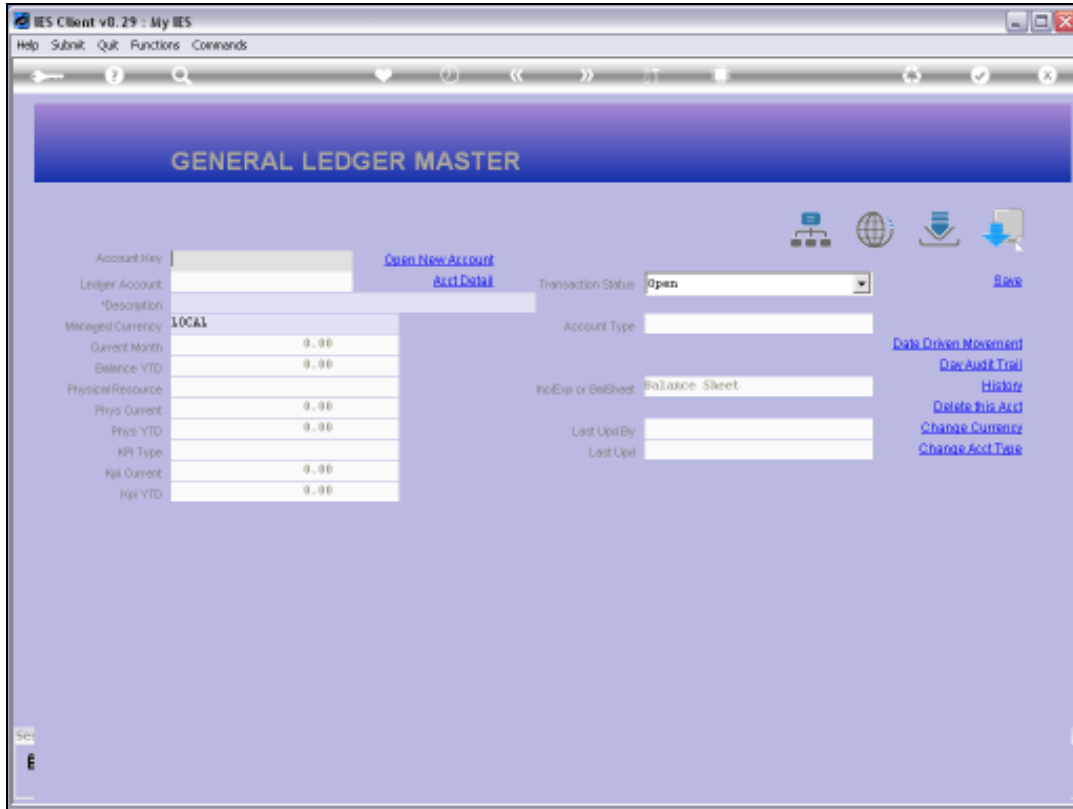
Slide notes:



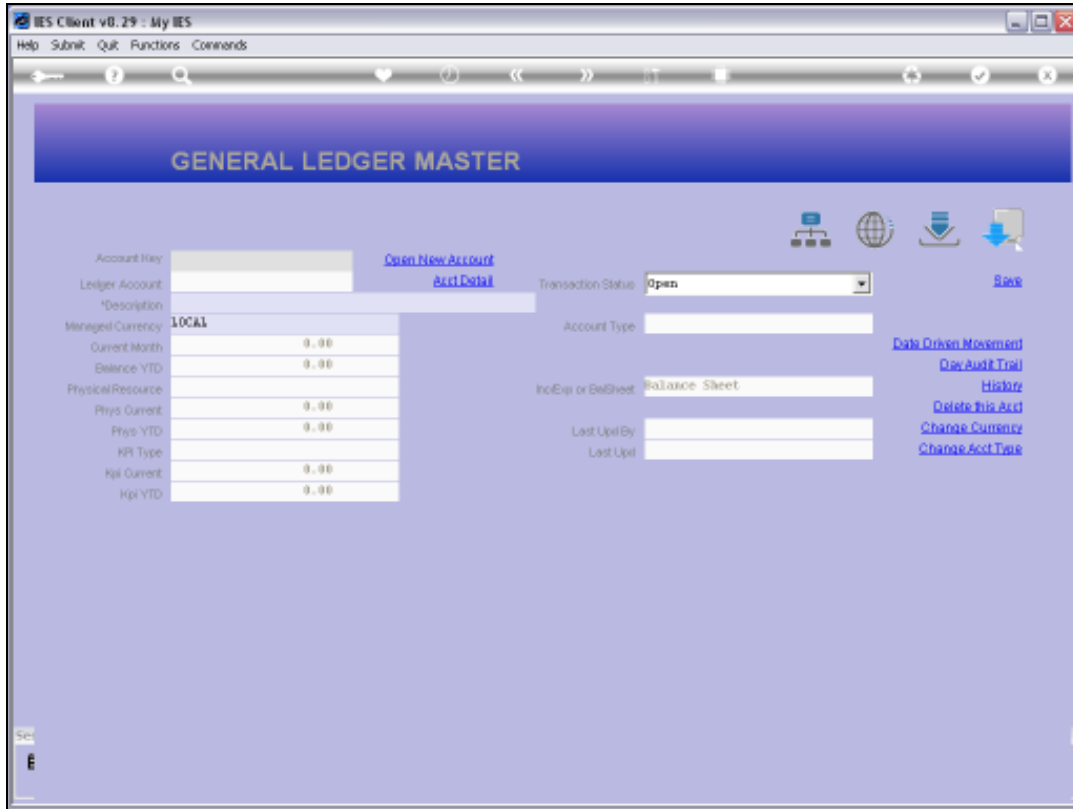
Slide 33
Slide notes:



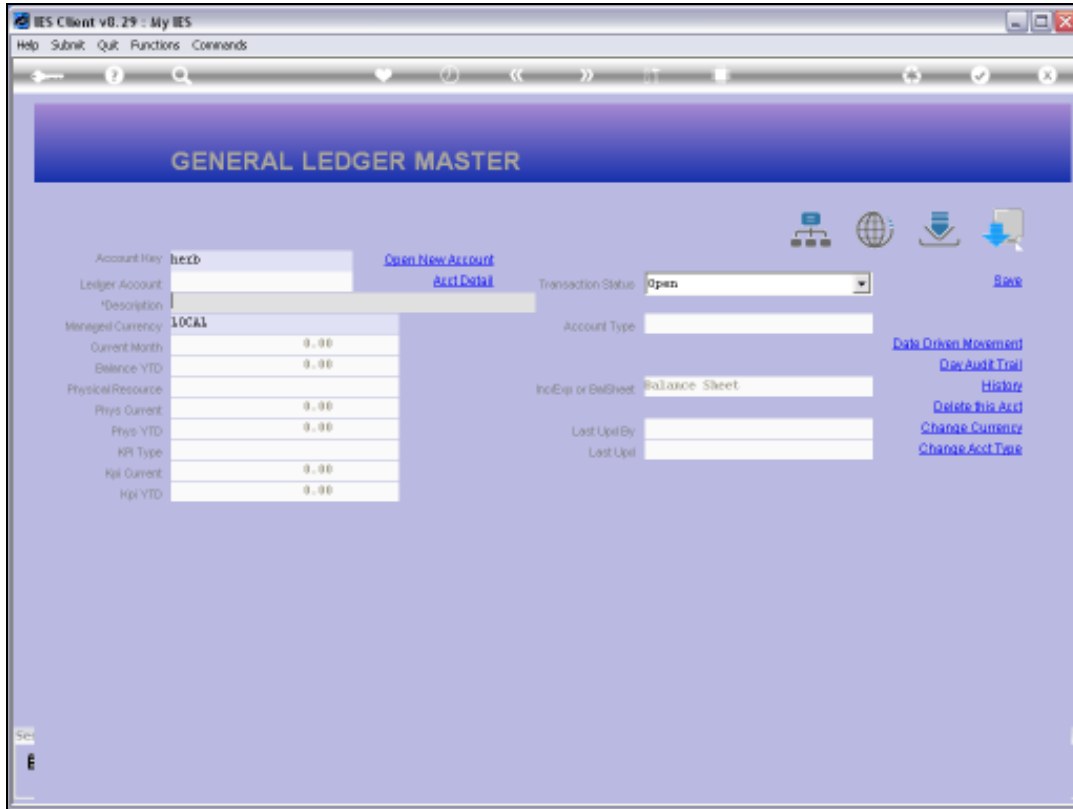
Slide 34
Slide notes:



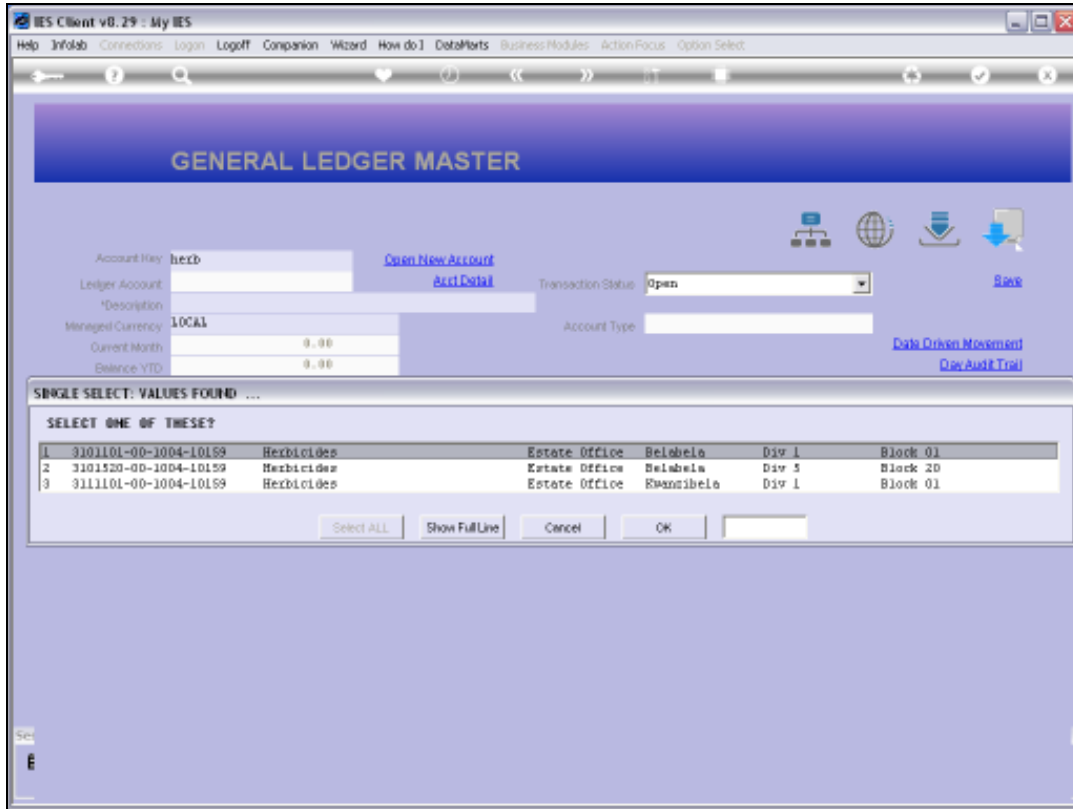
Slide 35
Slide notes:



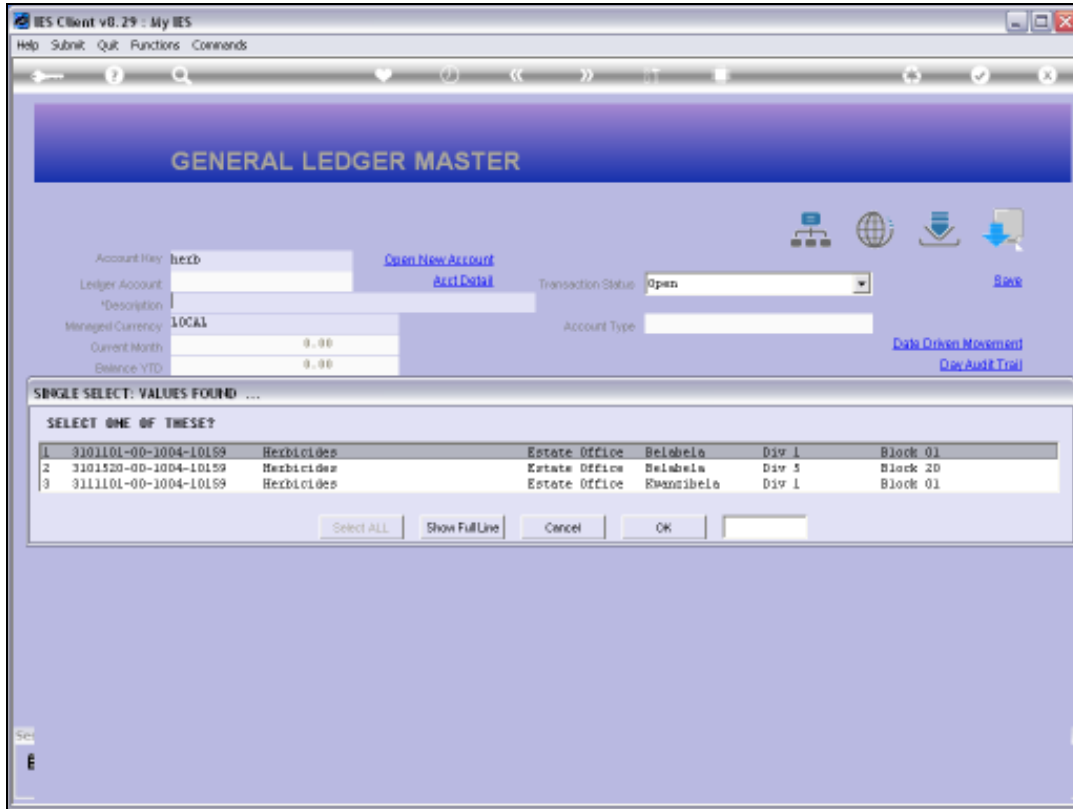
Slide 36
Slide notes:



Slide 37
Slide notes:



Slide 38
Slide notes:



Slide 39
Slide notes:

Account Key: 310110100100410159 [Open New Account](#)

Ledger Account: 3101101-00-1000-10159 [Acct Detail](#)

Description: HERBICIDES

Managed Currency: LOCAL

Transaction Status: Open

Account Type: Closed

Inc/Exp or BalSheet: Income / Expense

Last Upd By: Roxxy

Last Upd: 21/09/2010

Field	Value
Current Month	0.00
Balance YTD	0.00
Phys Current	0.00
Phys YTD	0.00
Hpl Current	0.00
Hpl YTD	0.00

income / expense vs budget

Jan 2010 Feb 2010 Mar 2010 Apr 2010 May 2010 Jun 2010 Jul 2010 Aug 2010 Sep 2010 Oct 2010 Nov 2010 Dec 2010

inc buc

Slide 40
Slide notes:

GENERAL LEDGER MASTER

Account Key: 310110100100410159 [Open New Account](#)
Ledger Account: 3191101-00-1000-10159 [Acct Detail](#) Transaction Status: **Closed** [Save](#)
Description: **HERBICIDES**
Managed Currency: **LOCAL** Account Type: **L1 Ledger**
Current Month: 0.00
Balance YTD: 0.00
Physical Resource: **Income / Expense**
Phys Current: 0.00
Phys YTD: 0.00
Hpi Type: **Roxy**
Hpi Current: 0.00
Hpi YTD: 0.00
Last Upd: 21/09/2010

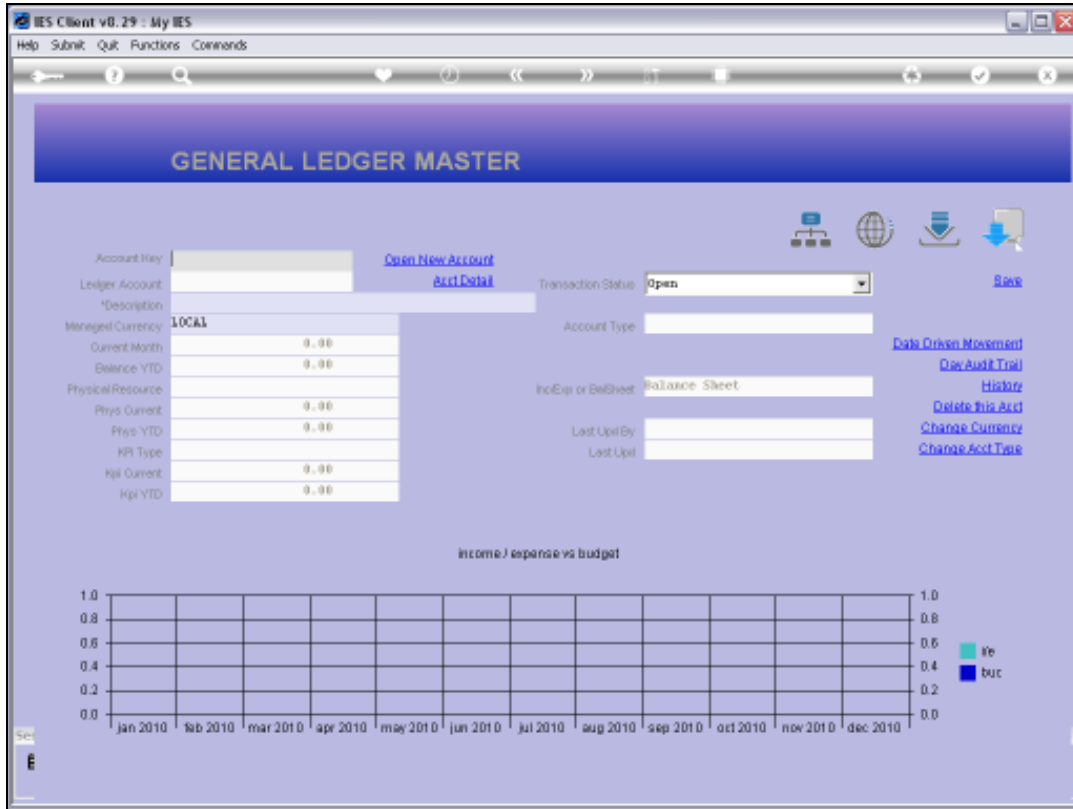
[Data Drive Movement](#)
[Doc Audit Trail](#)
[History](#)
[Delete This Acct](#)
[Change Currency](#)
[Change Acct Type](#)

income / expense vs budget

Month	Actual	Budget
Jan 2010		
Feb 2010		
Mar 2010		
Apr 2010		
May 2010		
Jun 2010		
Jul 2010		
Aug 2010		
Sep 2010		
Oct 2010		
Nov 2010		
Dec 2010		

Slide 41

Slide notes: This time we will be able to close the Account.



Slide 42

Slide notes: Indeed it has been accepted. There are a few Accounts stated on the system settings that will automatically be barred from closing. For all other Ledger Accounts, closing is allowed unless a 'no close' instruction is recorded. We note though, that Account closing is only allowed to Users with that privilege specifically listed on the Ledger Business Profile for the User.