

Slide 1

Slide notes: Key Performance Indicators may be defined at Job Costing and also at Ledger File Maintenance.



Slide 2

Slide notes:

The screenshot shows the IES Client v8.29 application window. The title bar reads "IES Client v8.29 : My IES". The menu bar includes "Help", "Submit", "Quit", "Functions", and "Commands". The toolbar contains icons for back, forward, search, and other navigation functions. The main content area has a blue header bar with the text "Key Performance Indicator". Below this, there are two input fields: "KPI Code" and "Description". To the right of the "Description" field is a "Save" button. Below these fields is a table with a single column labeled "Resources". The table contains one row with the value "1".

Resources
1

Slide 3

Slide notes:

The screenshot shows a web browser window titled "IES Client v8.29 : My IES". The browser's address bar is empty, and the menu bar includes "Help", "Submit", "Quit", "Functions", and "Commands". The main content area has a light blue background. At the top, there is a dark blue header bar with the text "Key Performance Indicator" in white. Below this, there are two input fields: "KPI Code" and "Description". To the right of the "Description" field is a blue "Save" button. Below these fields is a table with a single column header "Resource". The table contains one row with the number "1" in the first column, followed by several empty rows. The table has a vertical scrollbar on the right side.

Resource
1

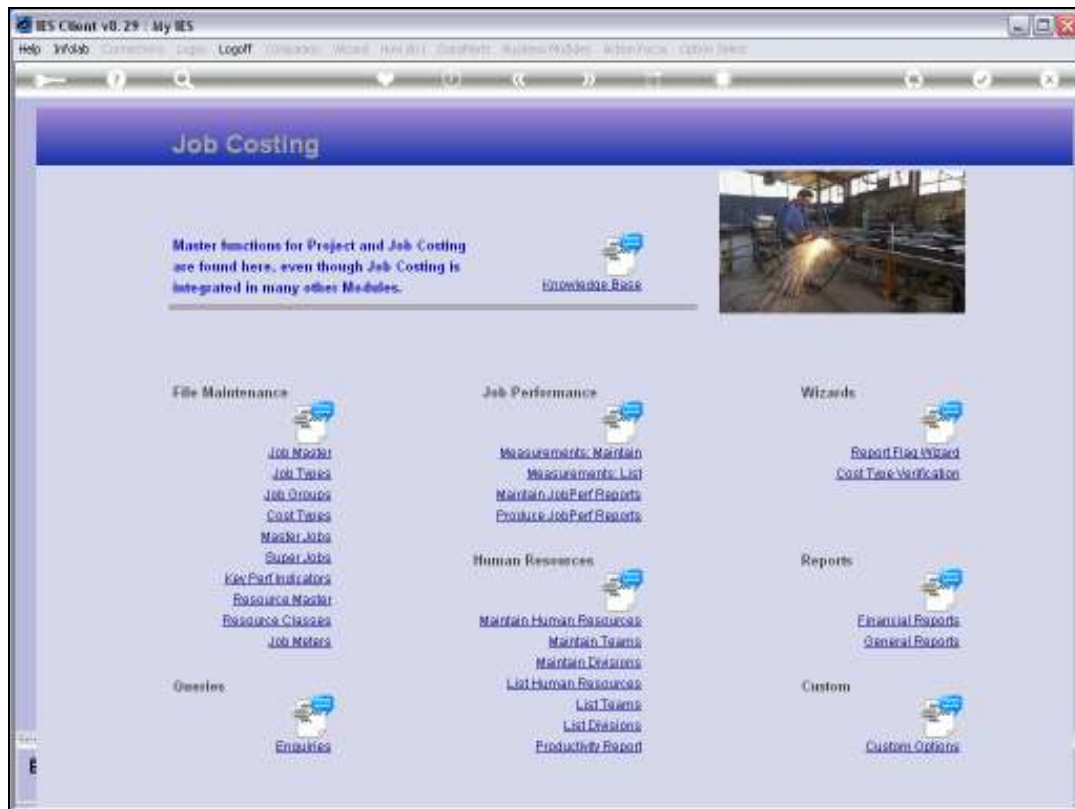
Slide 4

Slide notes:



Slide 5

Slide notes:



Slide 6

Slide notes:



Slide 7

Slide notes:



Slide 8

Slide notes:



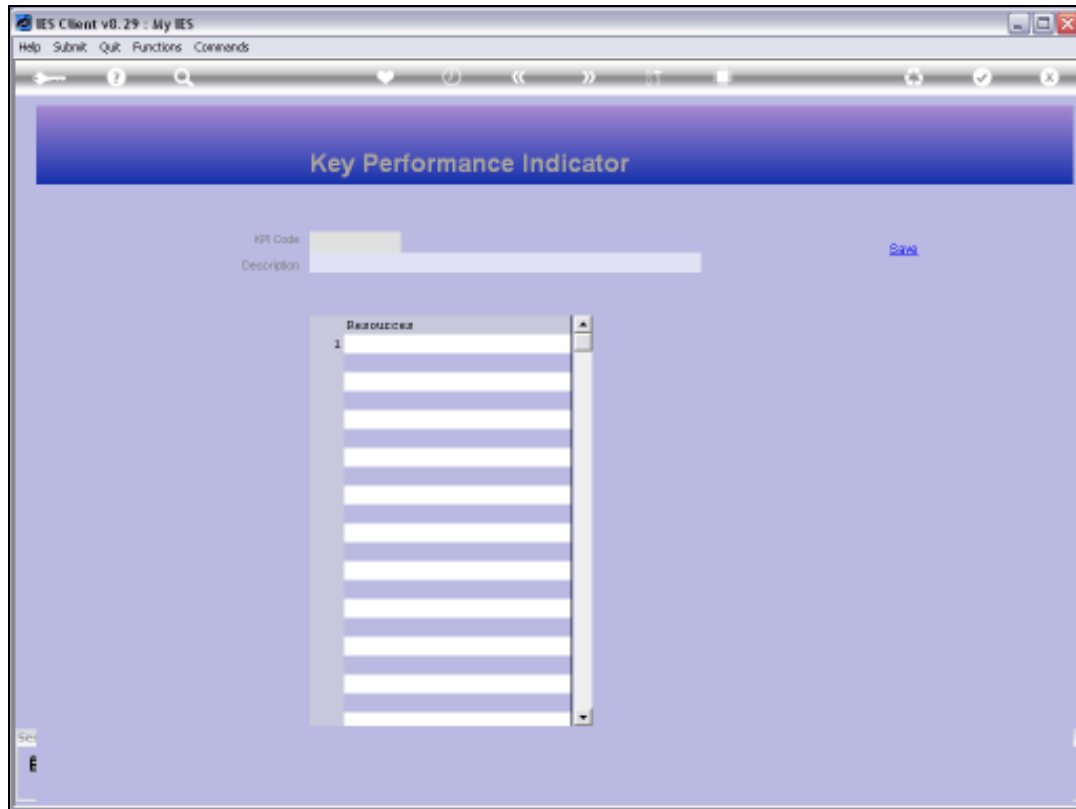
Slide 9

Slide notes:



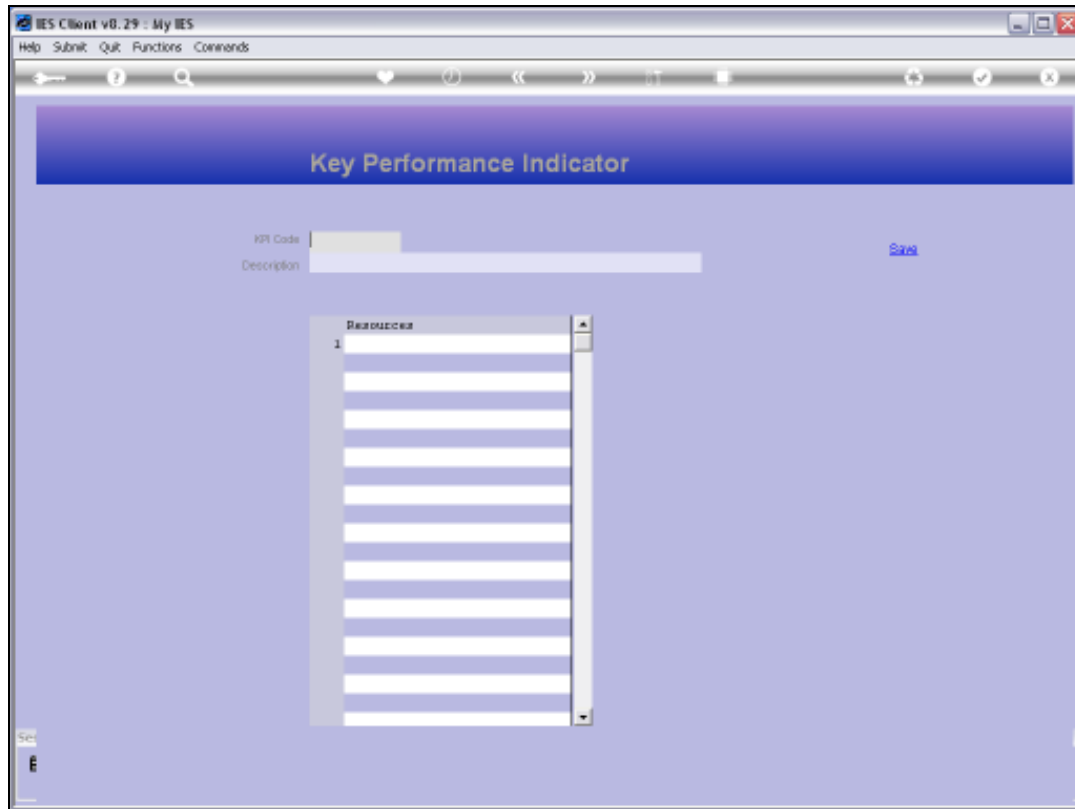
Slide 10

Slide notes:



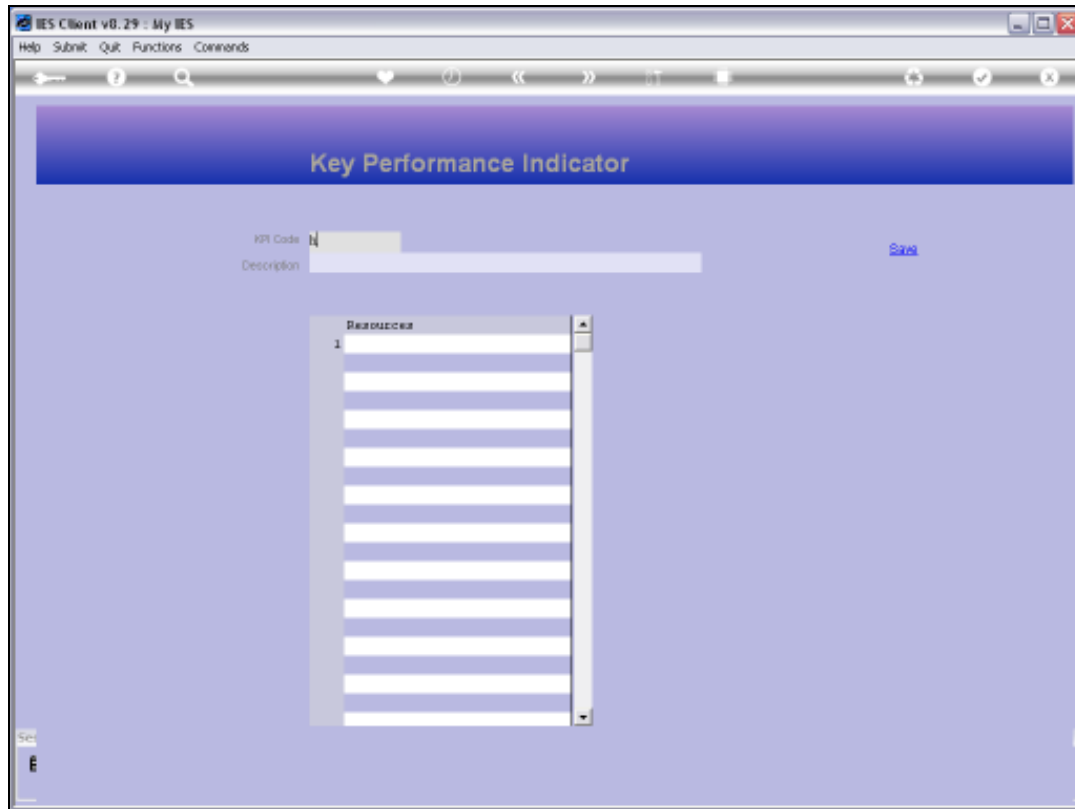
Slide 11

Slide notes:



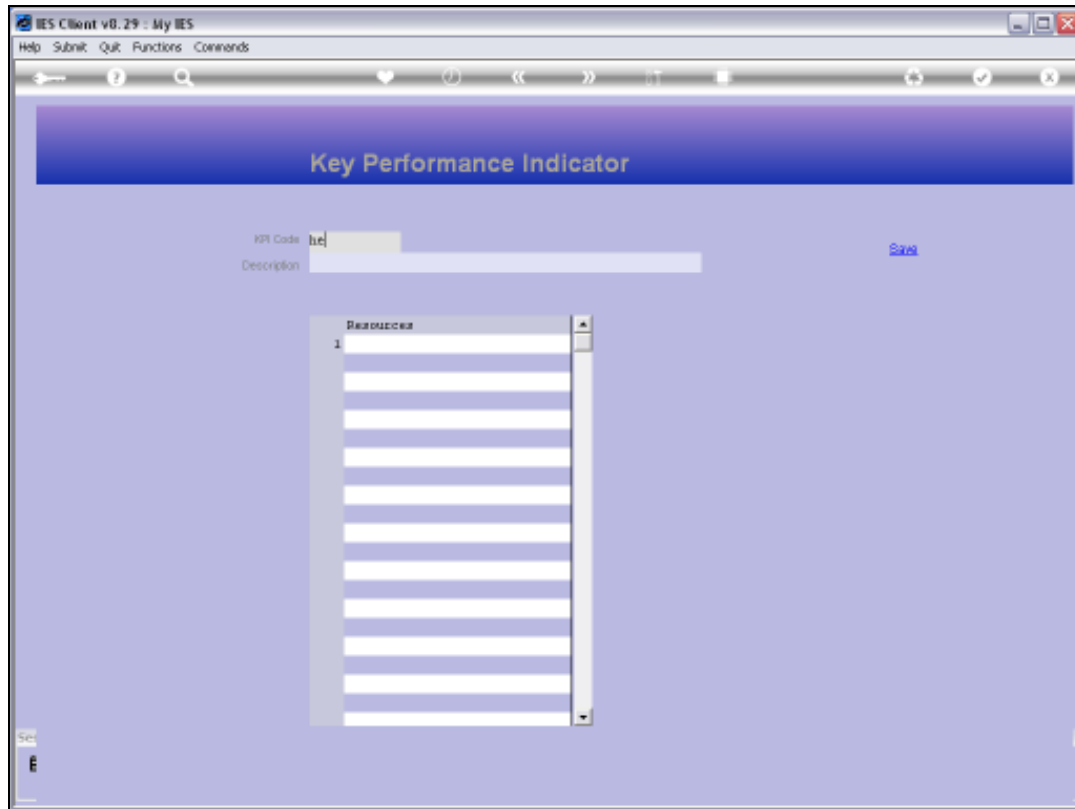
Slide 12

Slide notes:



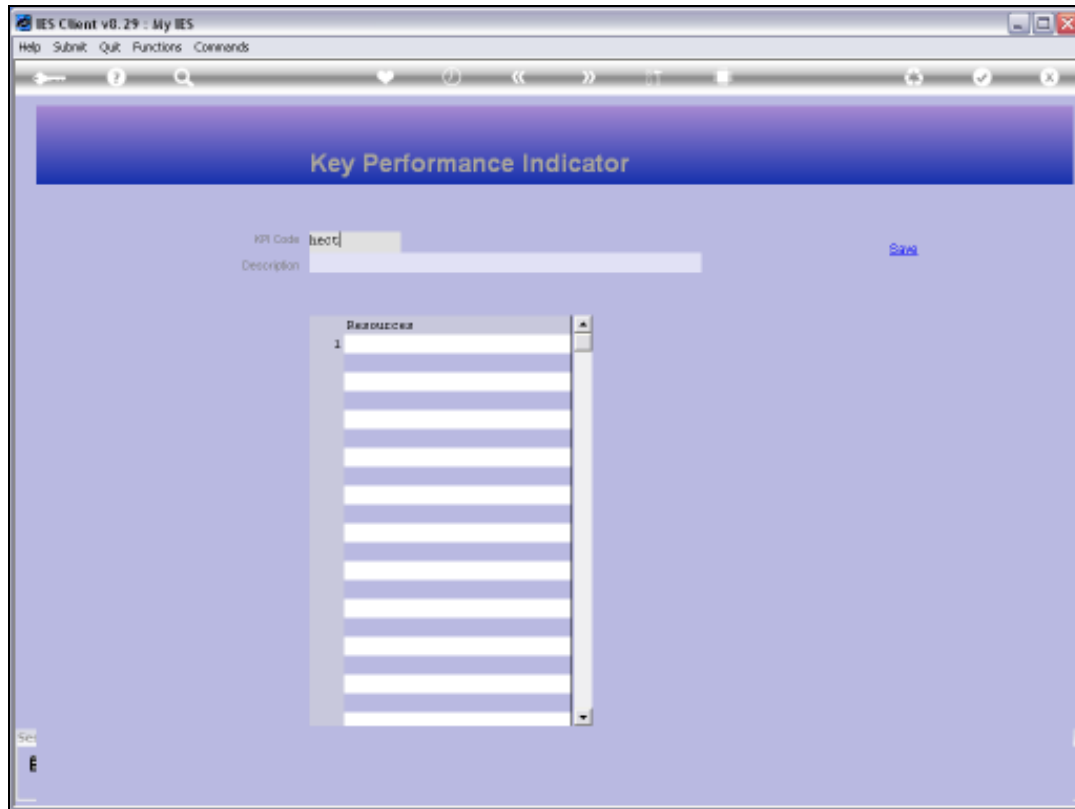
Slide 13

Slide notes:



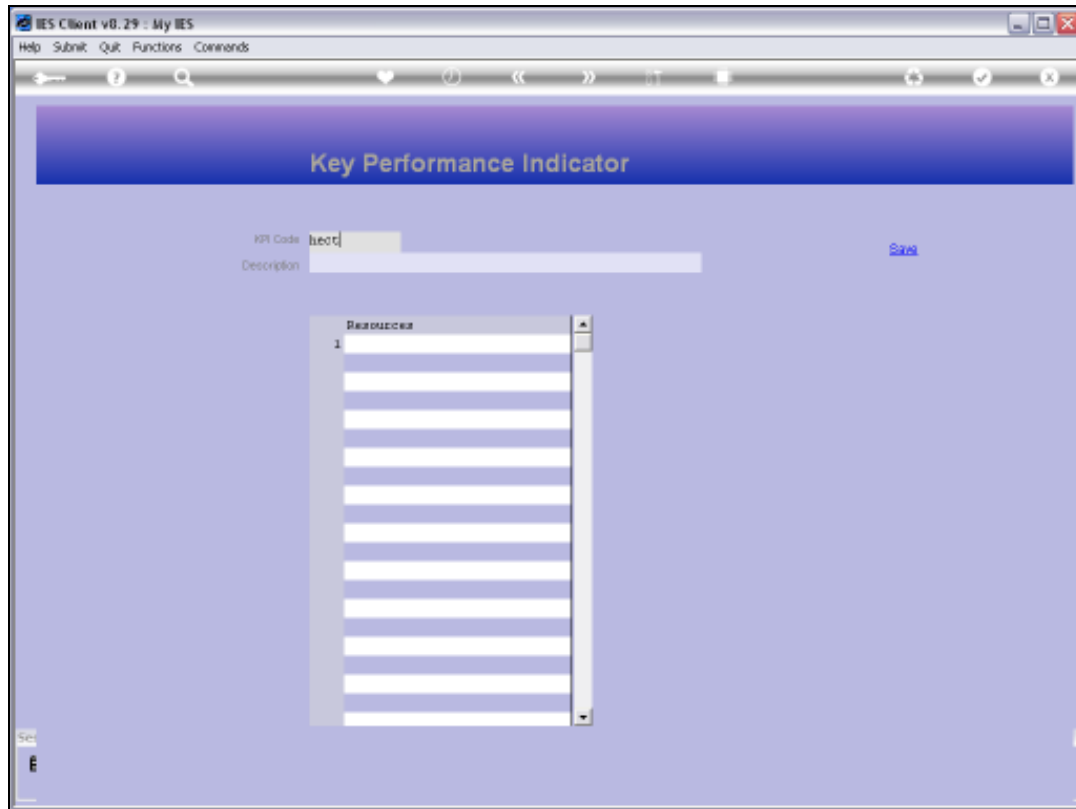
Slide 14

Slide notes:



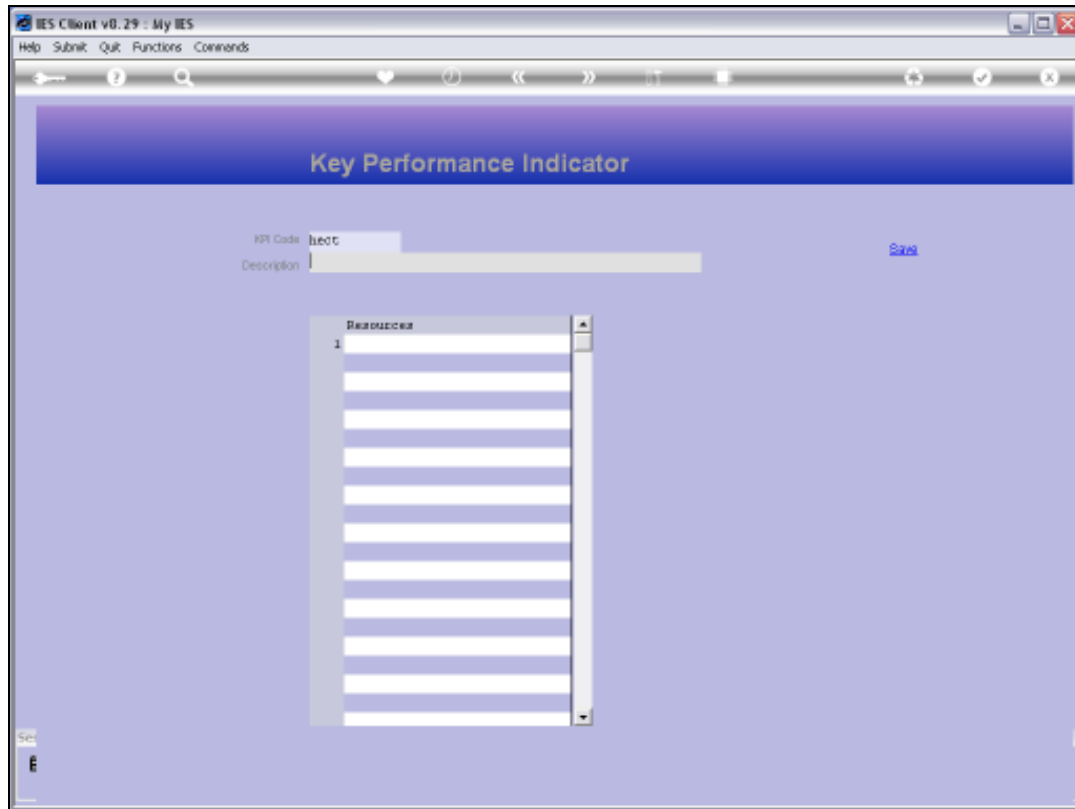
Slide 15

Slide notes:



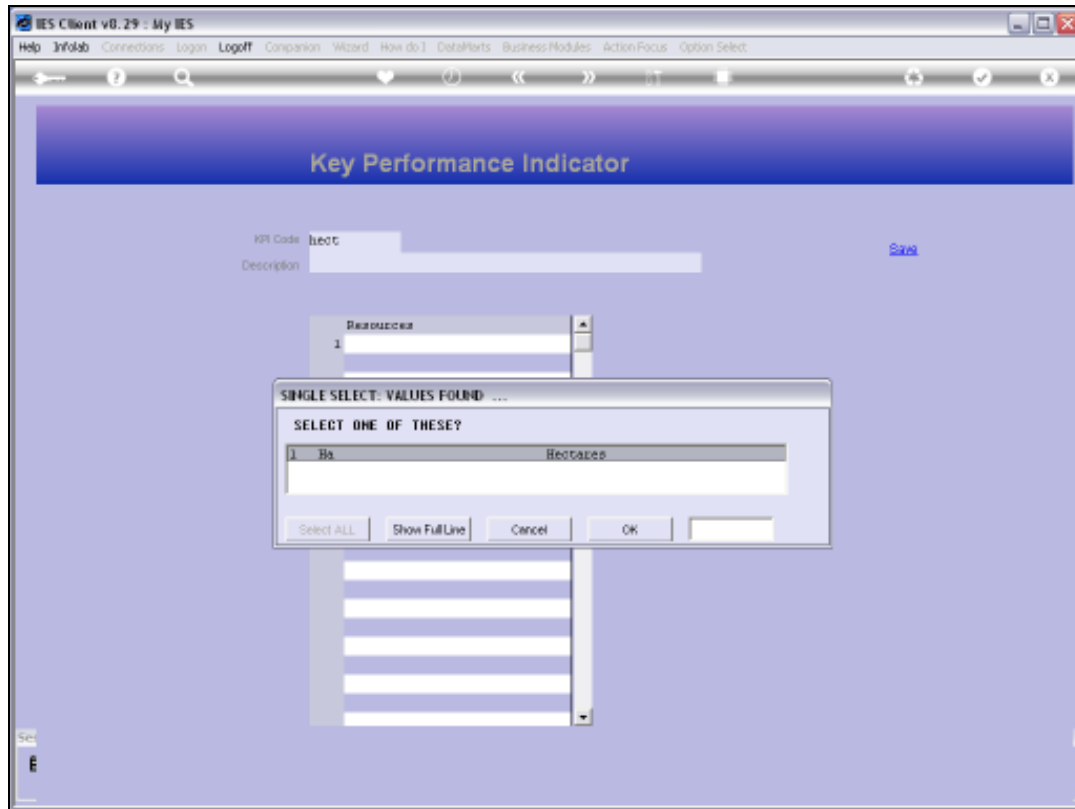
Slide 16

Slide notes:



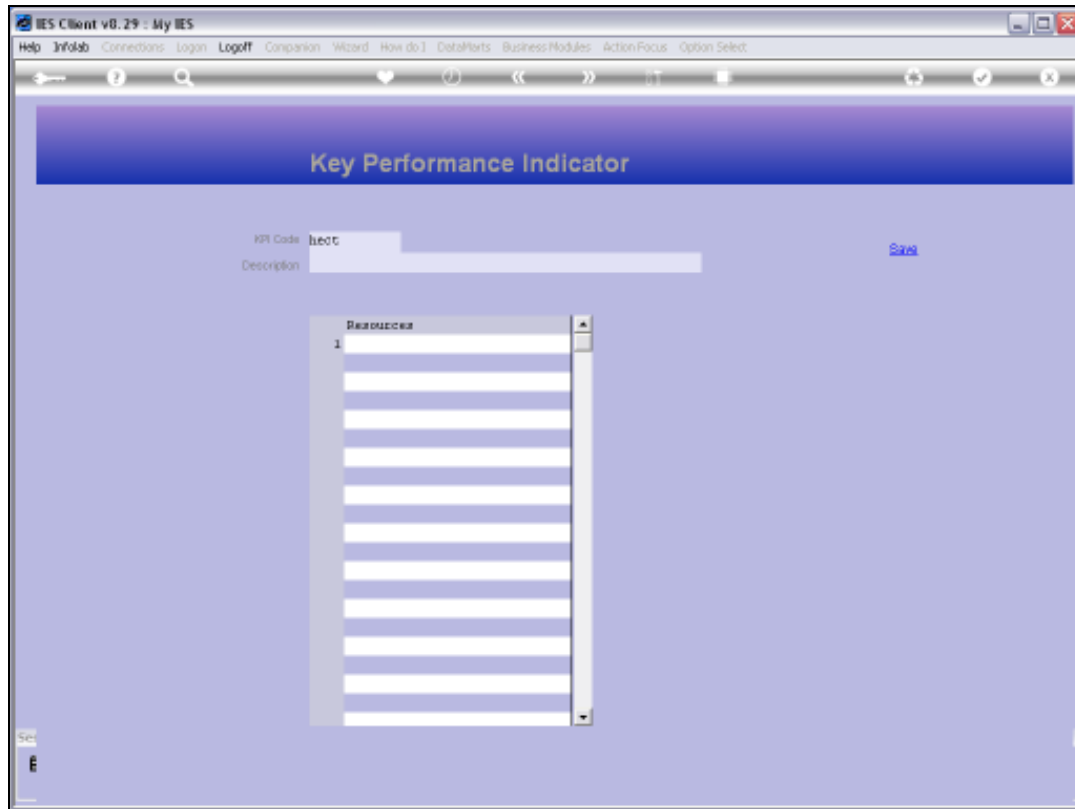
Slide 17

Slide notes:



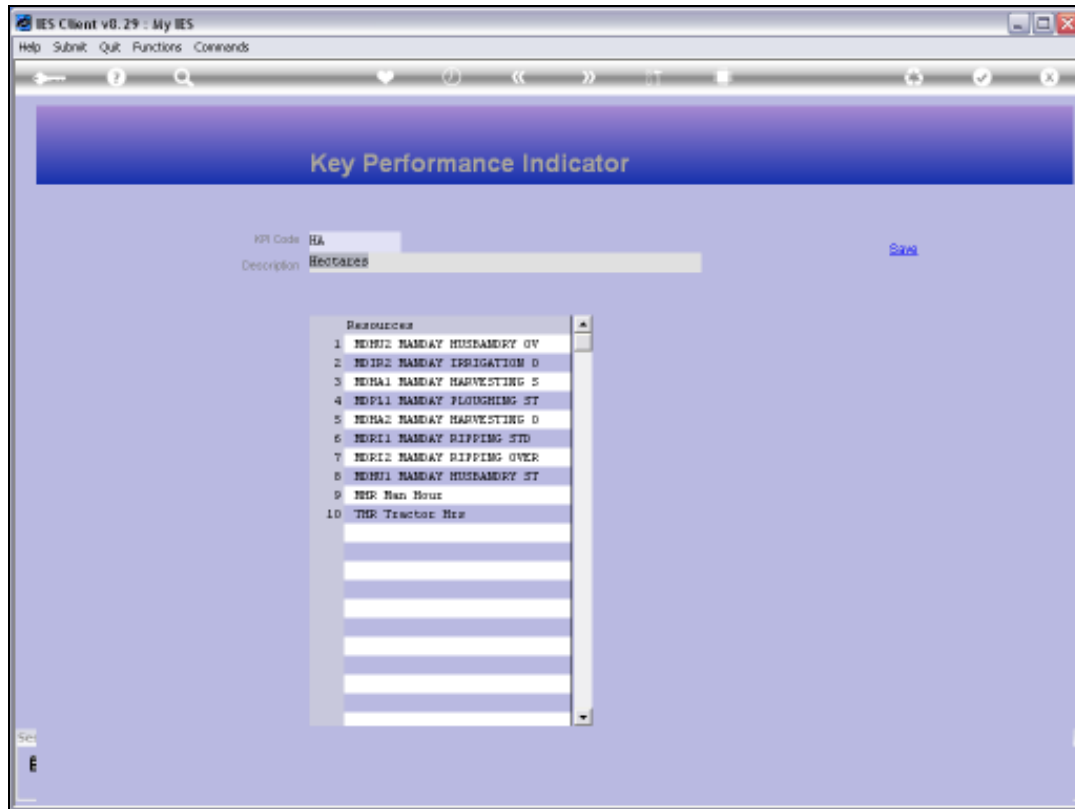
Slide 18

Slide notes:



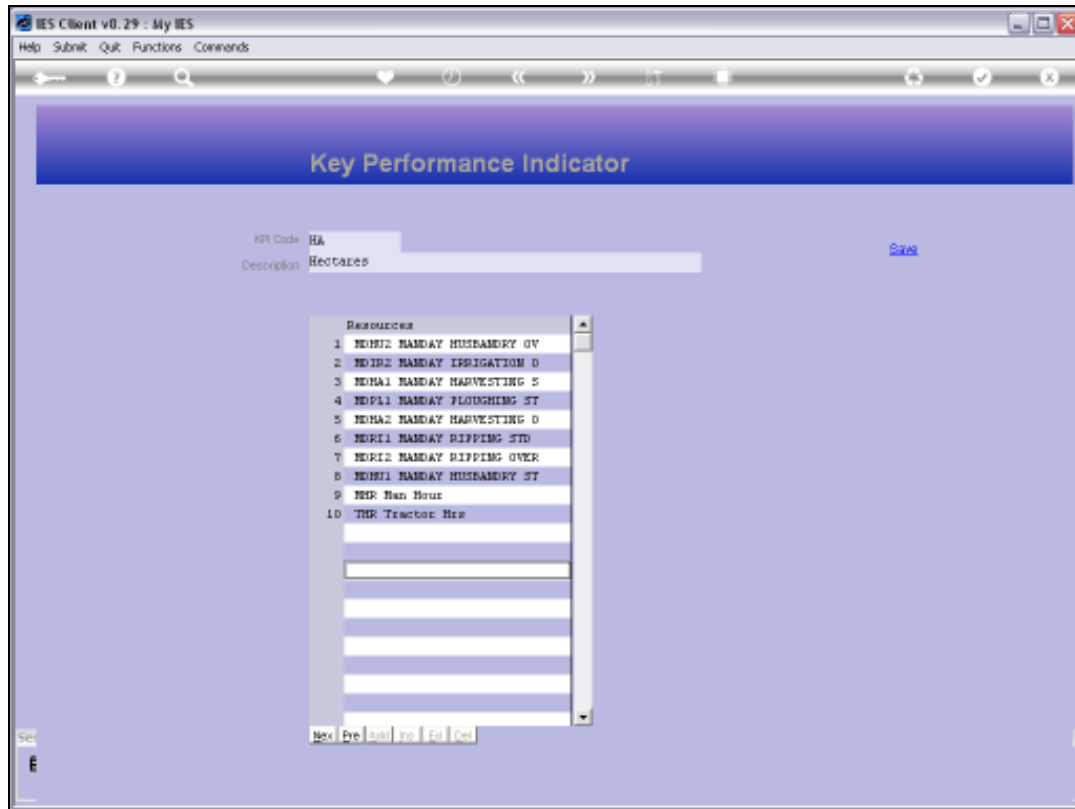
Slide 19

Slide notes:



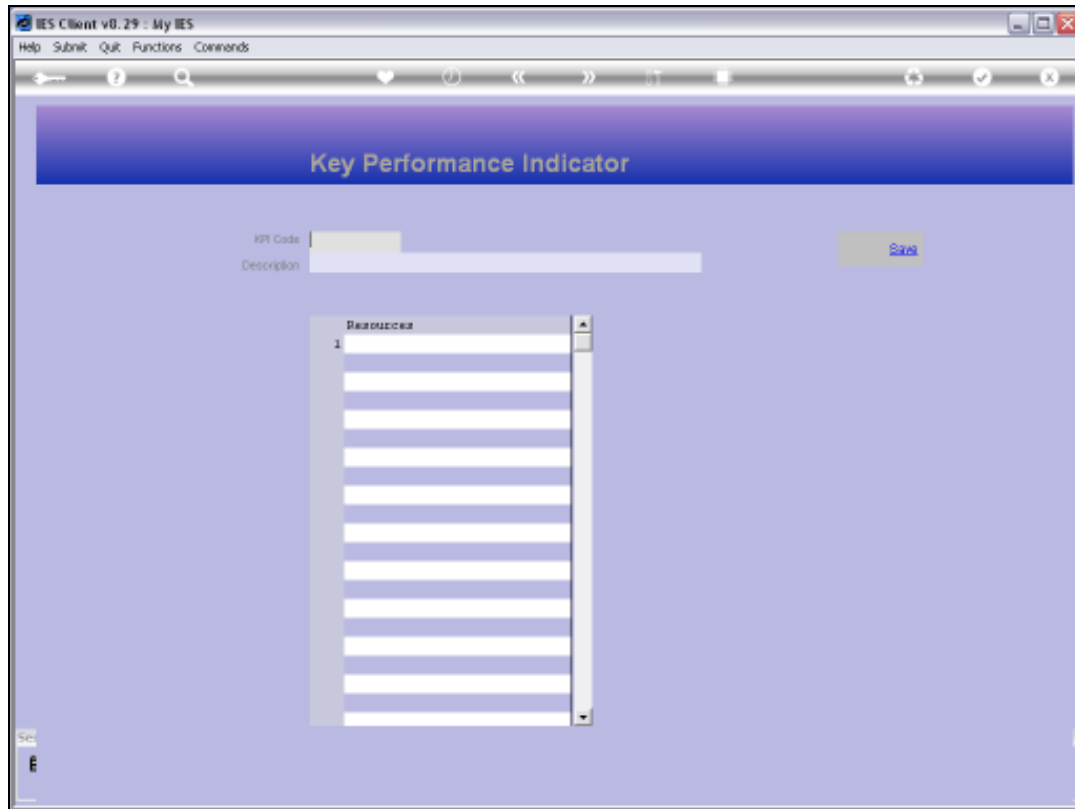
Slide 20

Slide notes: Key Performance Indicators are optional to use, and may be applied for measurements of performance in the Ledger. Our type of Business will be a determining factor in the types of KPI's that we may want. In Agriculture, the Hectare is a common KPI, whereas for a Car Manufacturer, the Unit of a Car will be a primary KPI. Nonetheless, we can have many KPI's, not just one, and we define any KPI's we need by assigning a short unique Key, and giving it a Name.



Slide 21

Slide notes: The Resources that are used with the KPI are not maintained here, and appear automatically when a Resource is linked to a KPI on the Resource Master.



Slide 22

Slide notes: