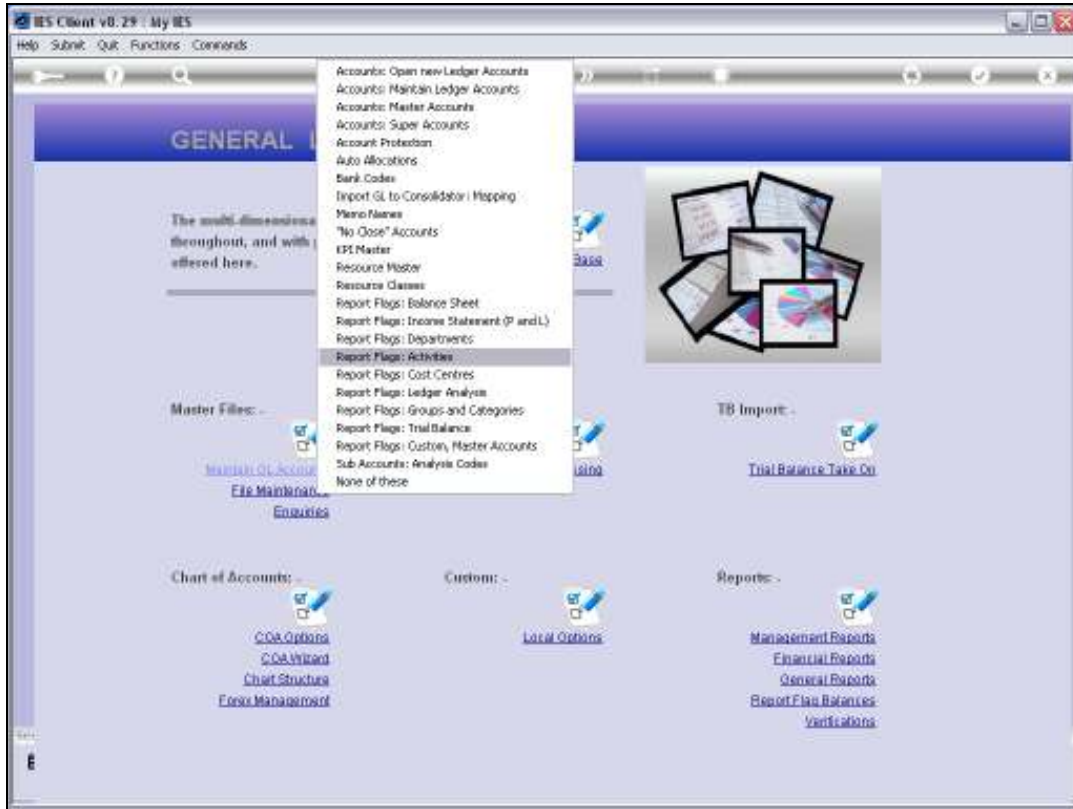


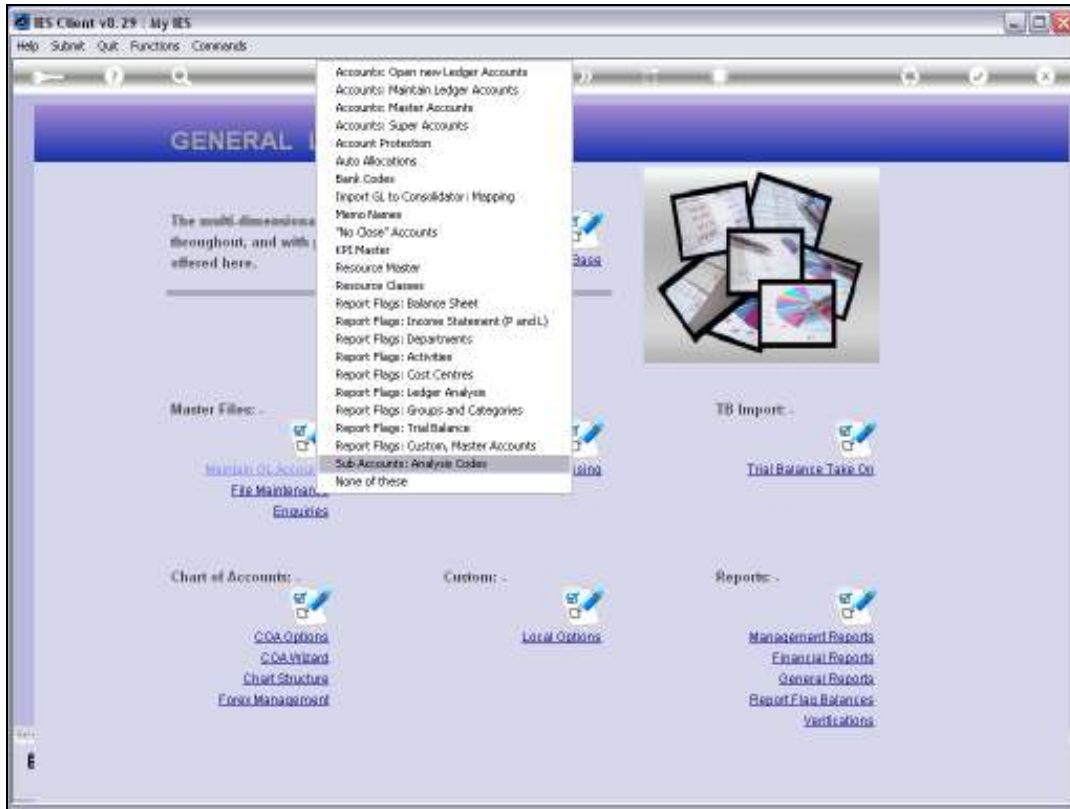


Slide 1

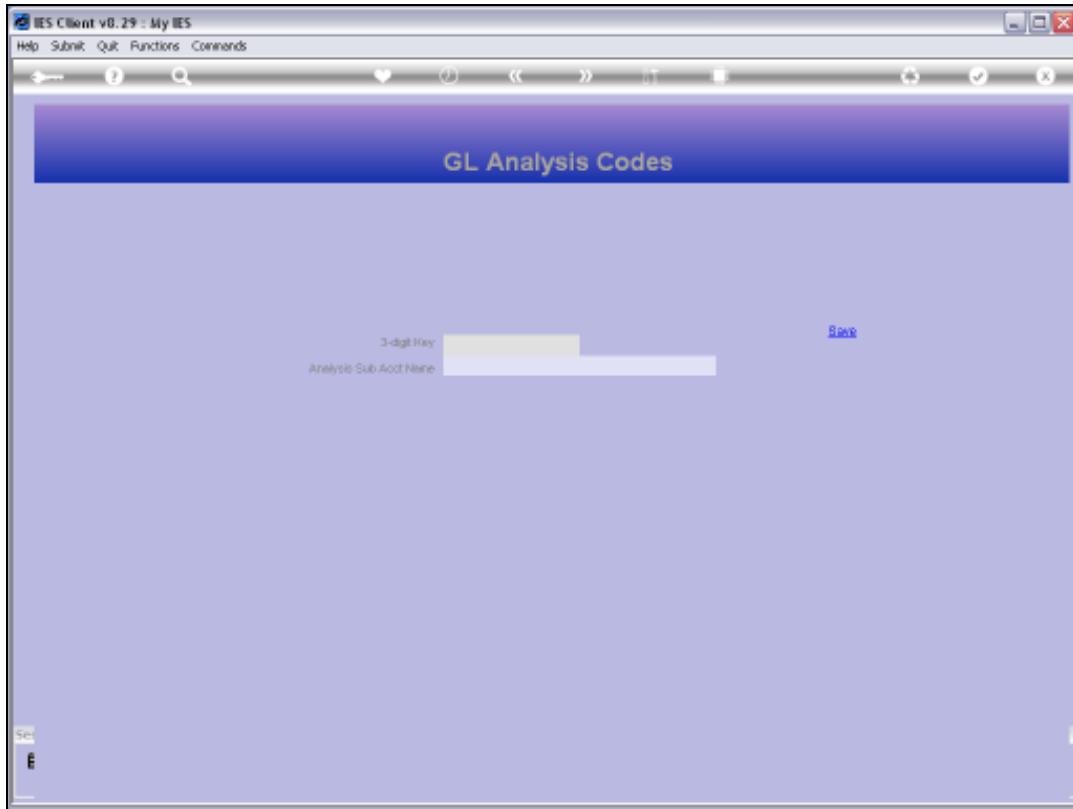
Slide notes: From the General Ledger File Maintenance menu we can define Sub Accounts for use with GL Accounts.



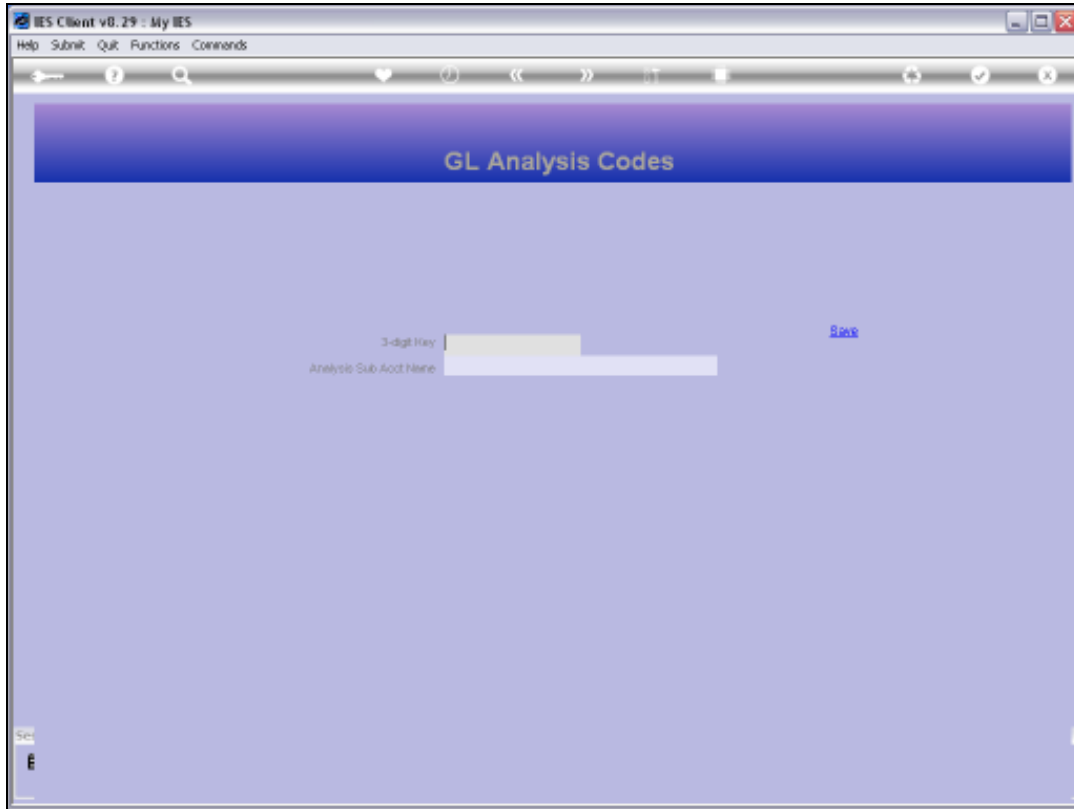
Slide 2
Slide notes:



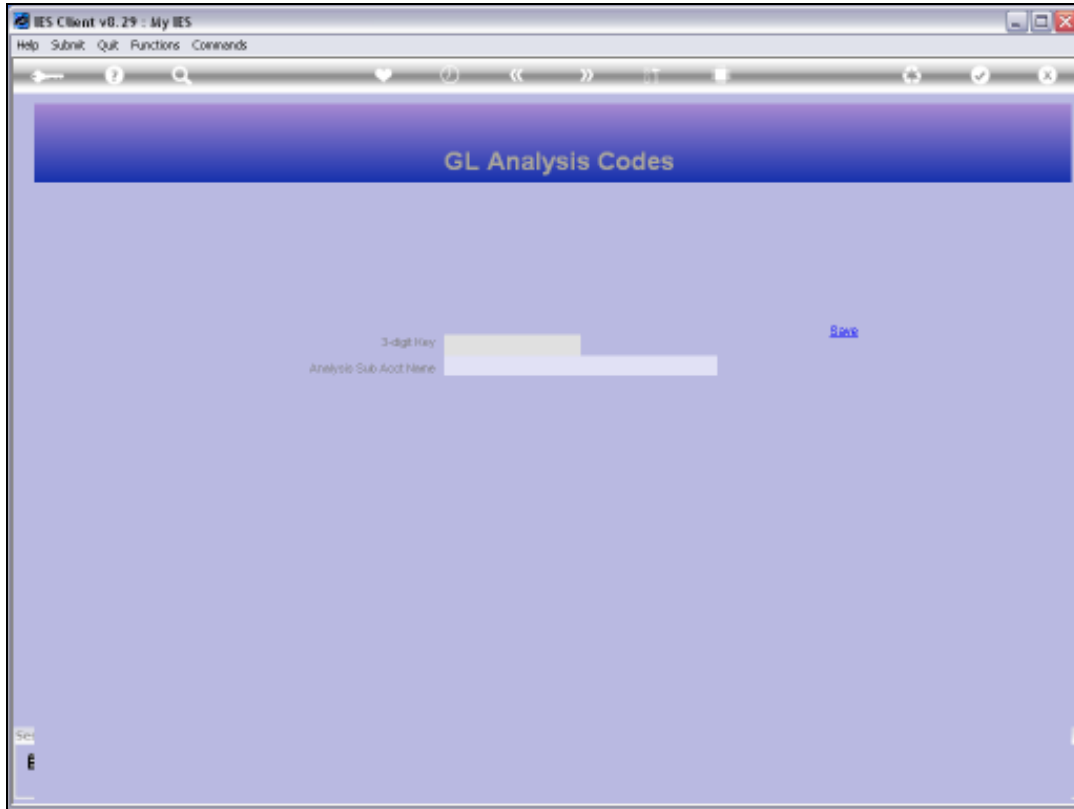
Slide 3
Slide notes:



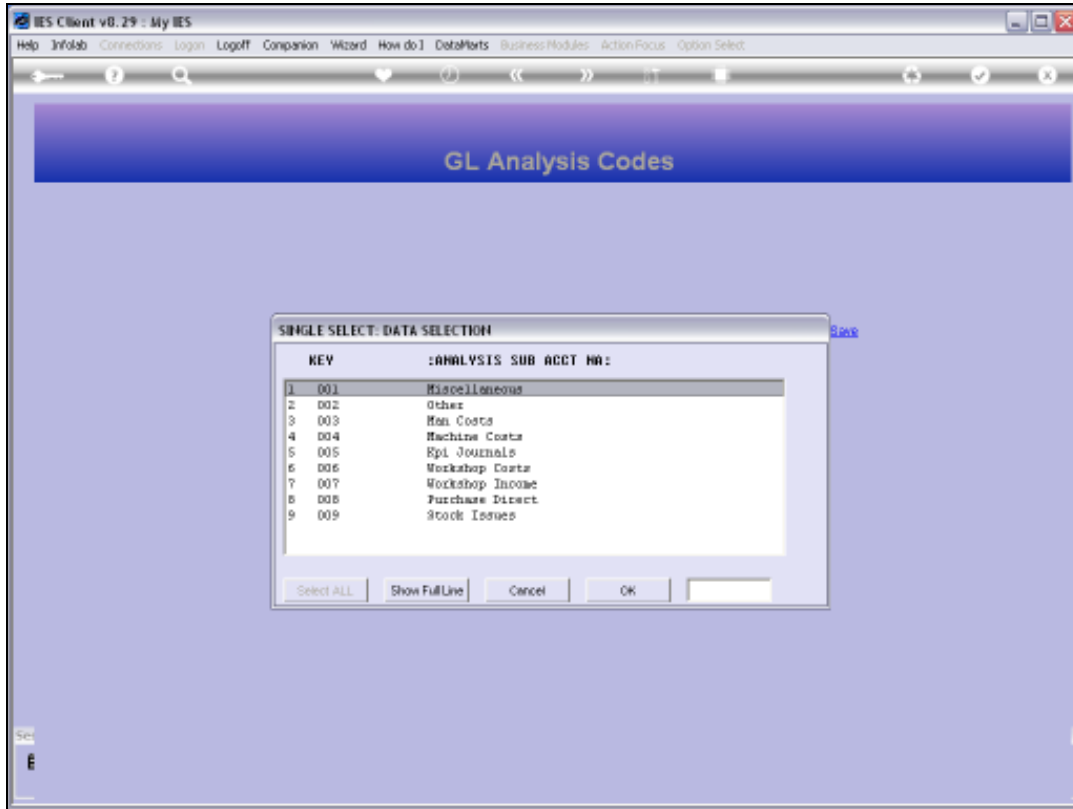
Slide 4
Slide notes:



Slide 5
Slide notes:

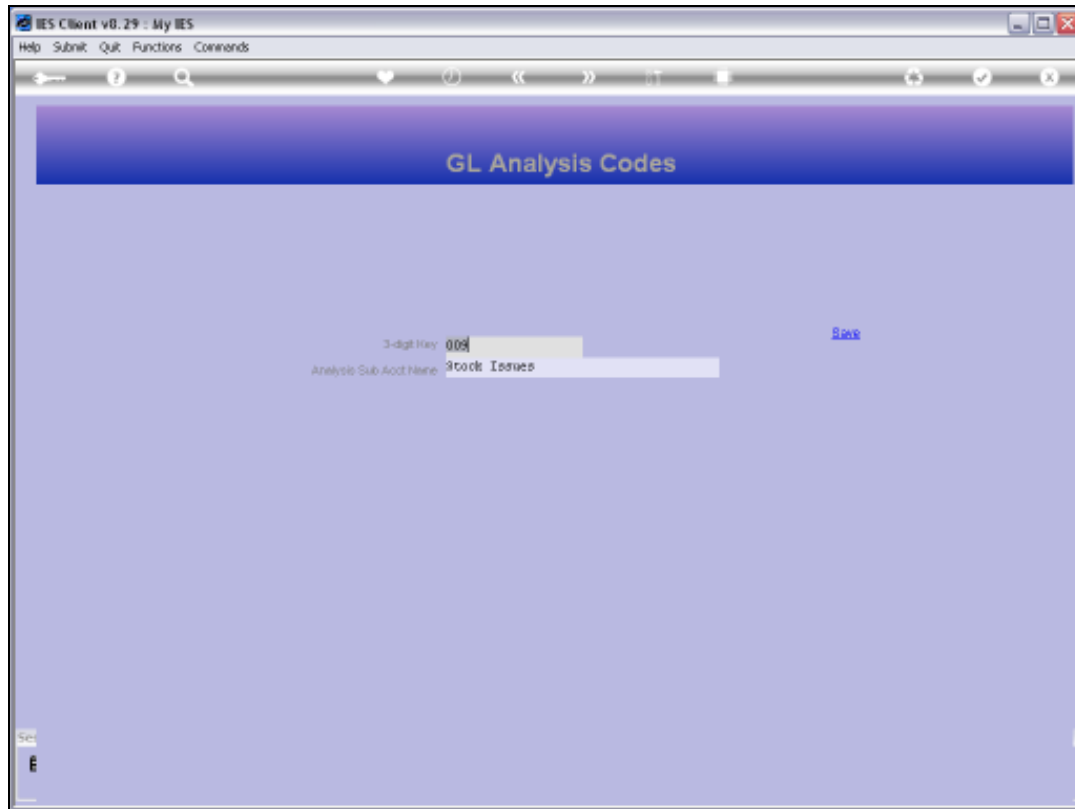


Slide 6
Slide notes:



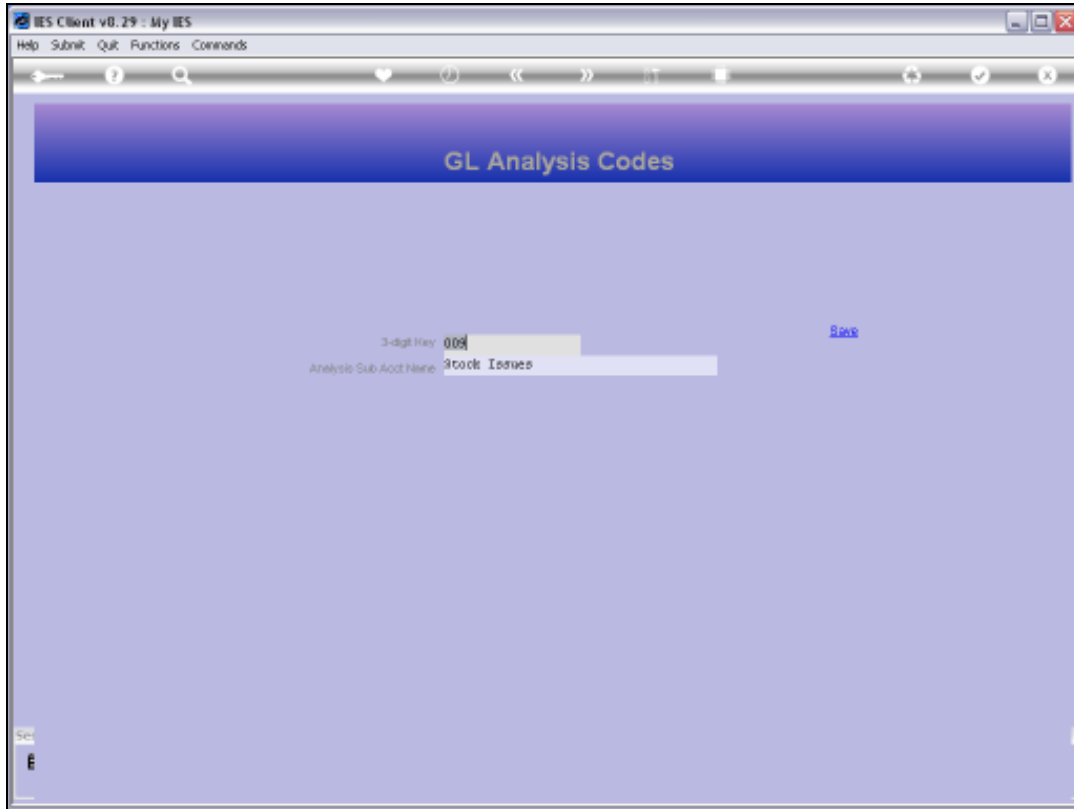
Slide 7

Slide notes: Sub Accounts, also called Analysis Codes, are defined with 3-digit Keys, so there are 999 available Sub Accounts.



Slide 8

Slide notes: Once we have any Sub Accounts defined, then they can be used on any Journals, and any Ledger Account can be sub-analyzed by Sub Account. All Sub Accounts may be applied on any Ledger Accounts, even though we do not have to use any of them on a particular Account.

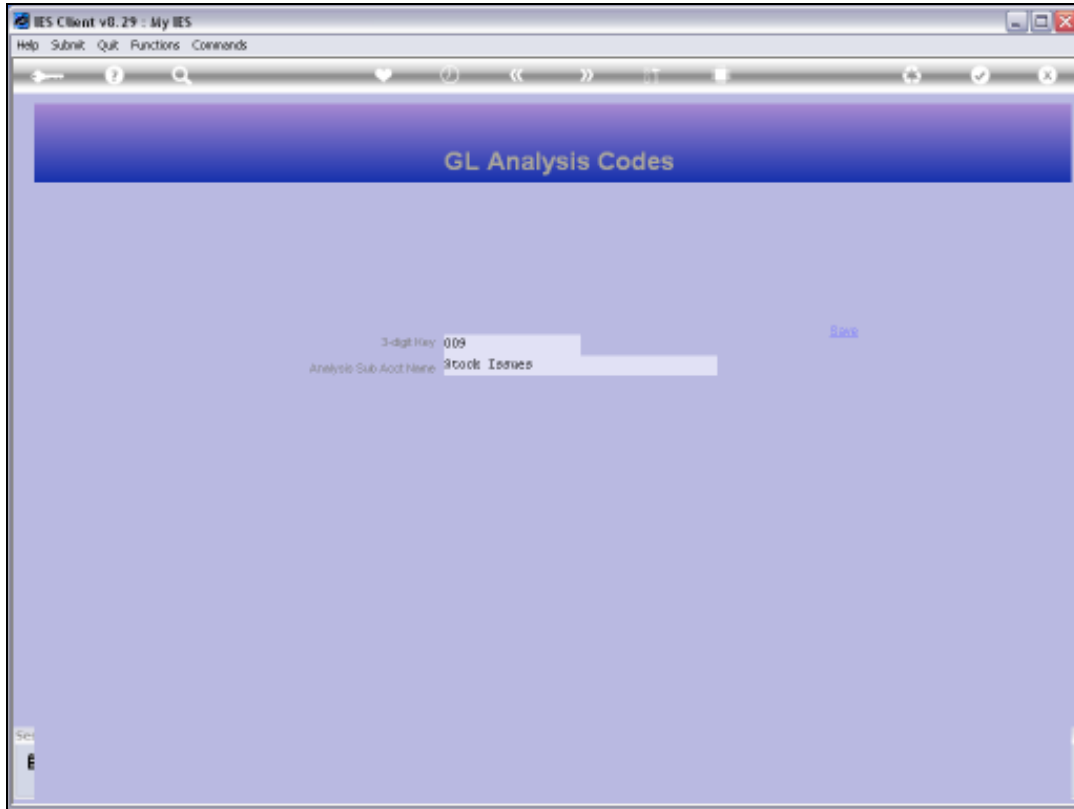


Slide 9
Slide notes:



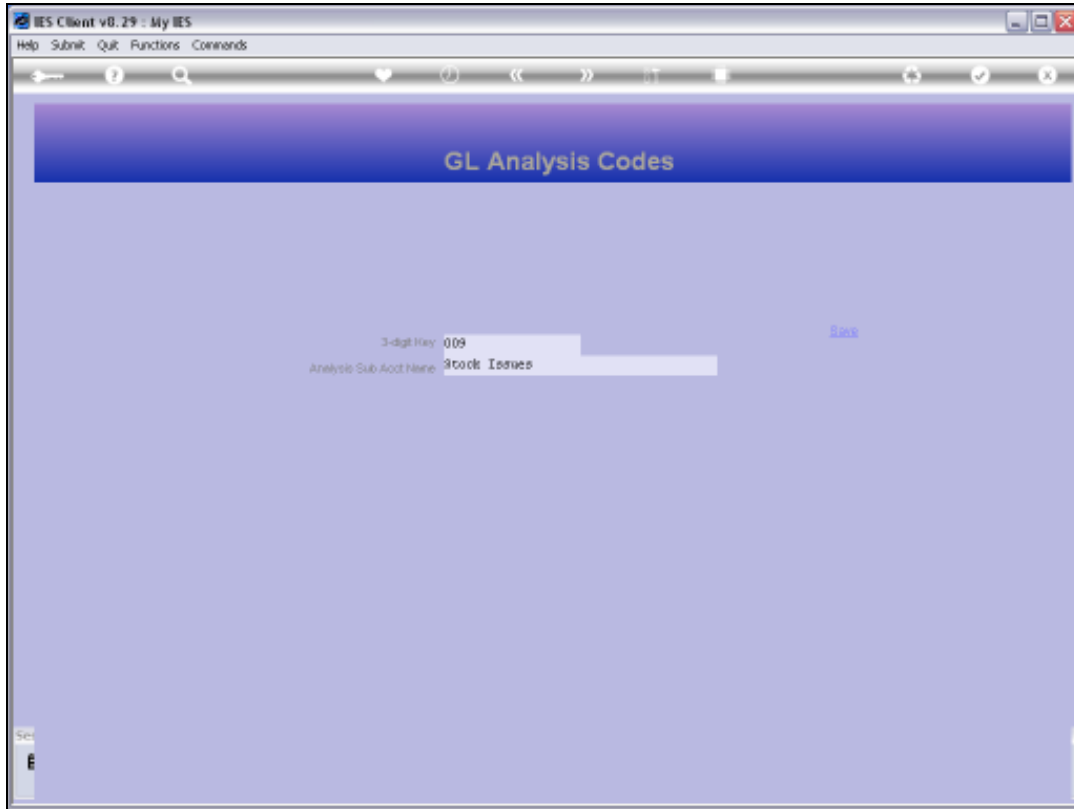
Slide 10

Slide notes: Here is the Help.



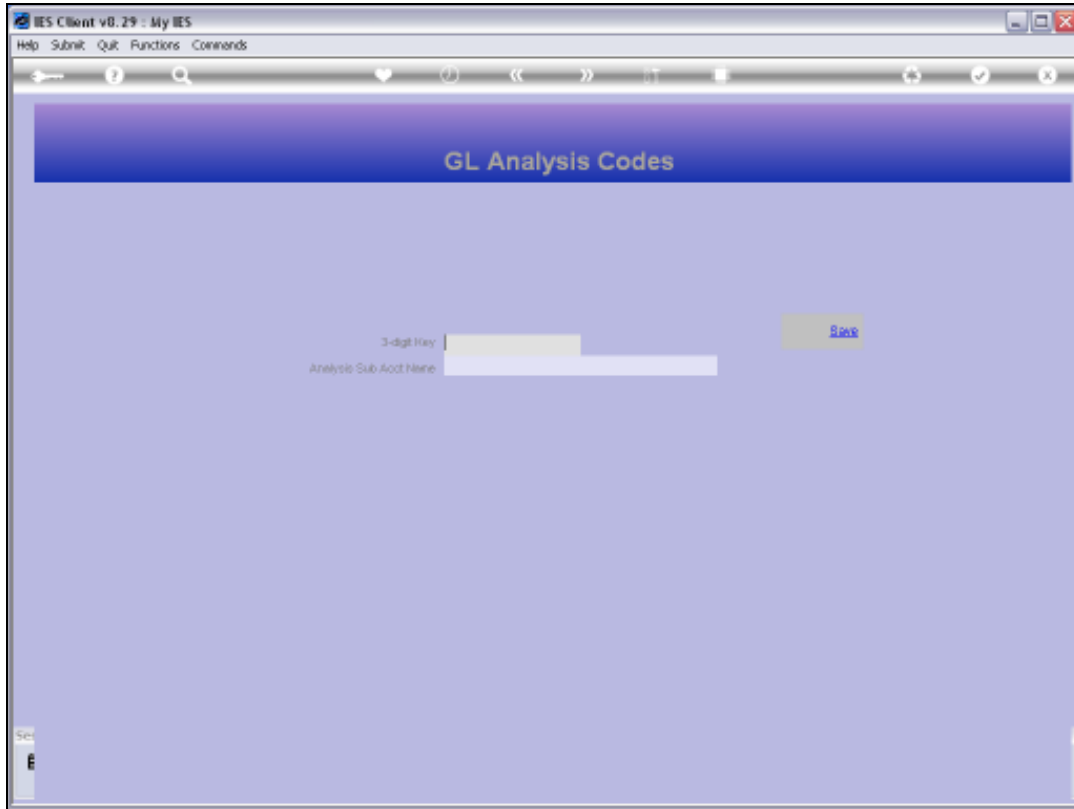
Slide 11

Slide notes:



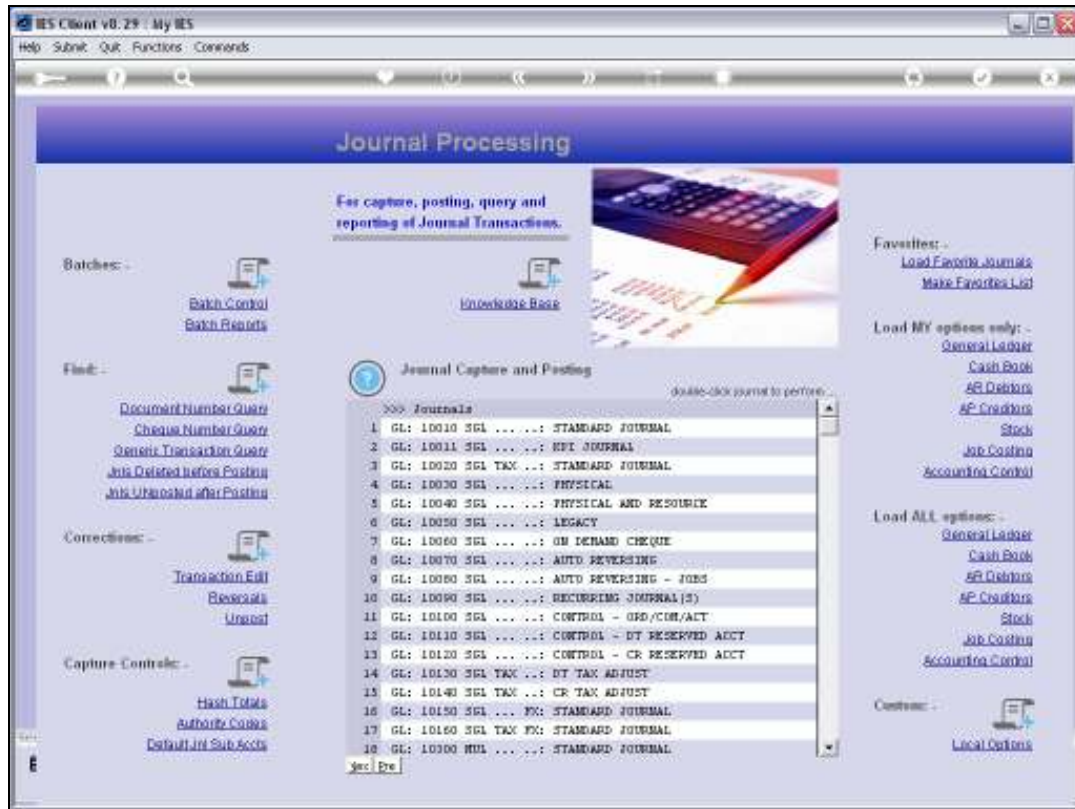
Slide 12

Slide notes:

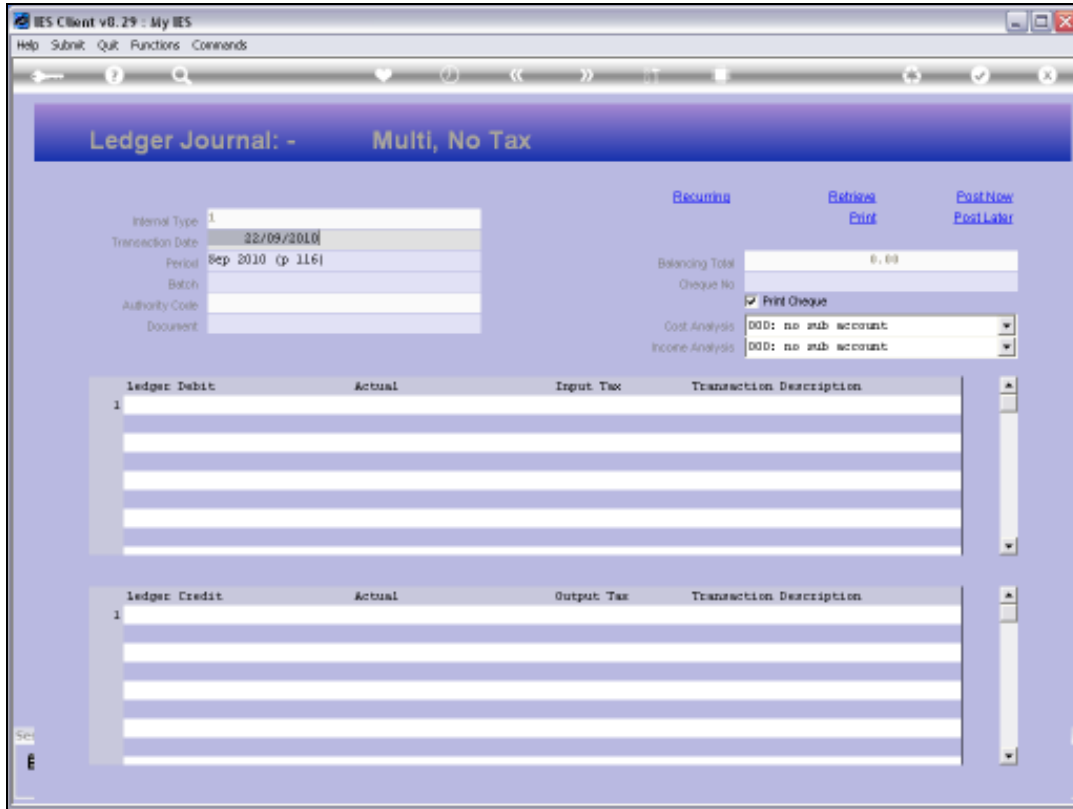


Slide 13

Slide notes:

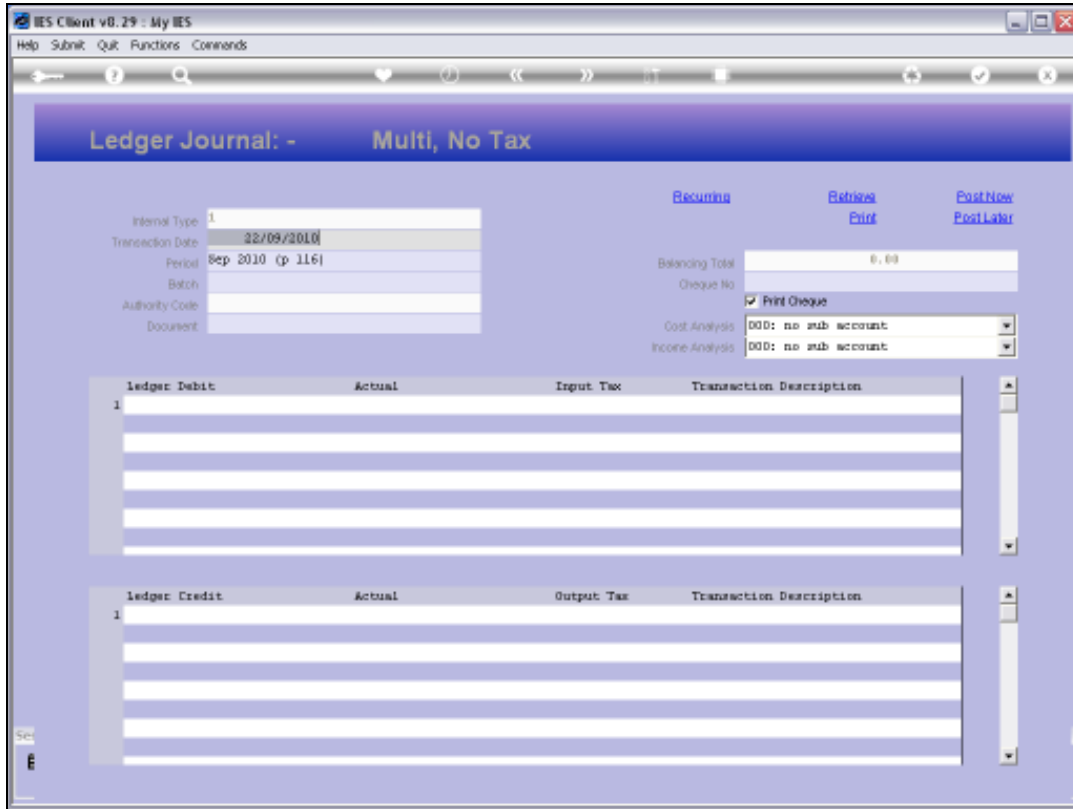


Slide 14
Slide notes:

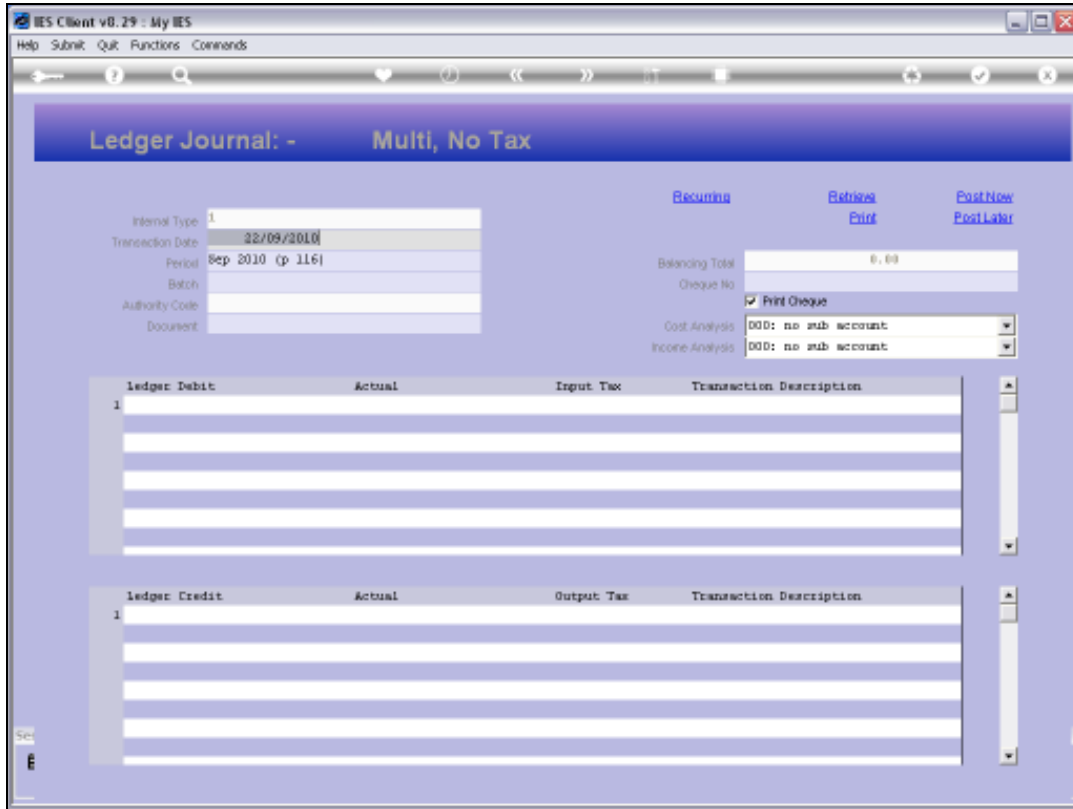


Slide 15

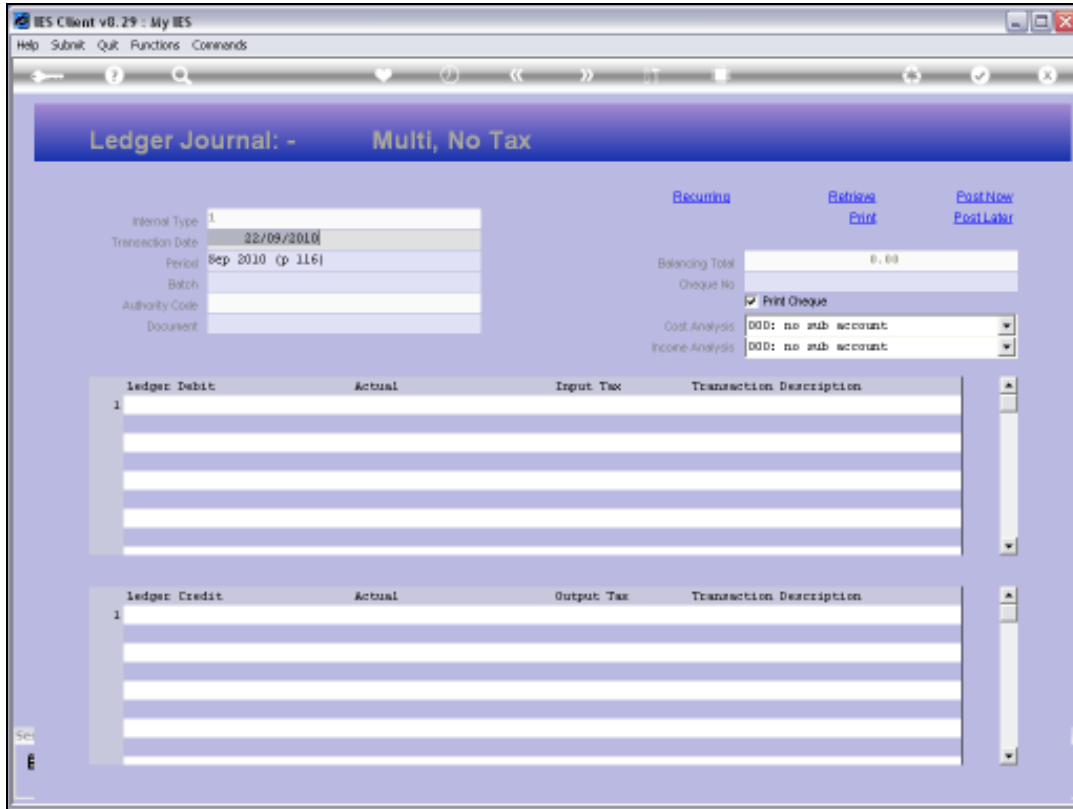
Slide notes: This is an example of a Multi Leg Journal. The Sub Accounts are optional to use.



Slide 16
Slide notes:



Slide 17
Slide notes:



Slide 18
Slide notes: