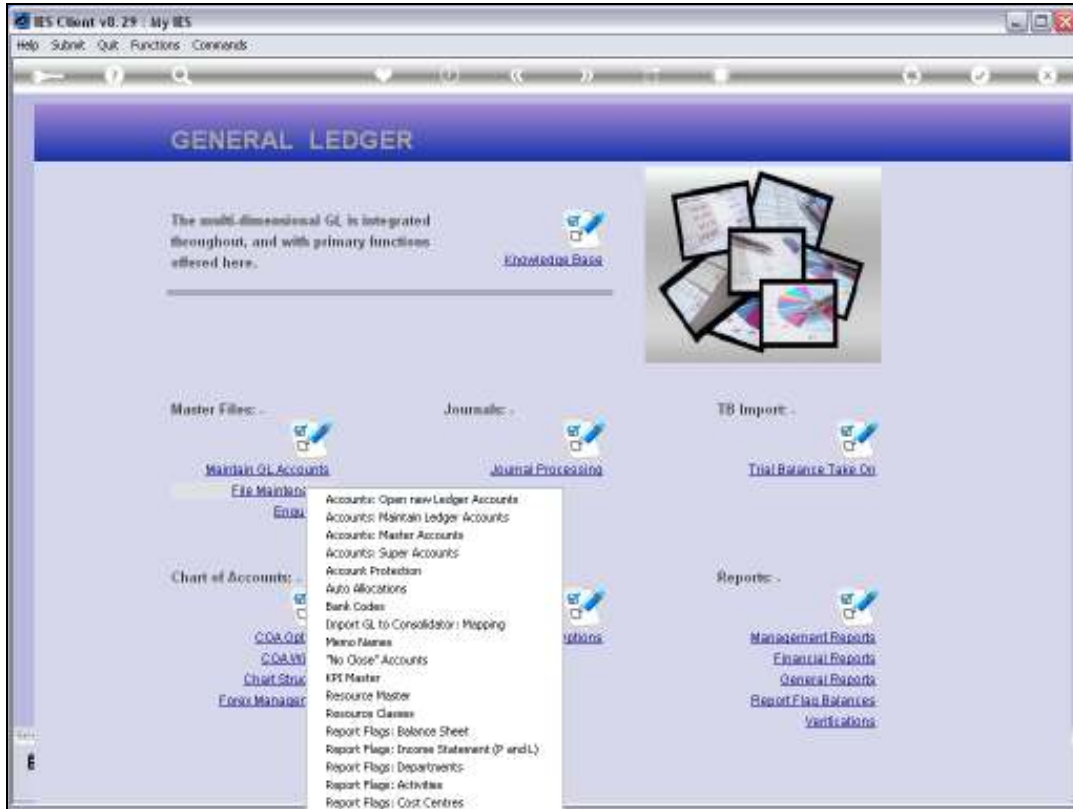




Slide 1

Slide notes: Balance Sheet Report Flags can be defined from the Ledger File Maintenance Menu. They can also be imported at the system set up.

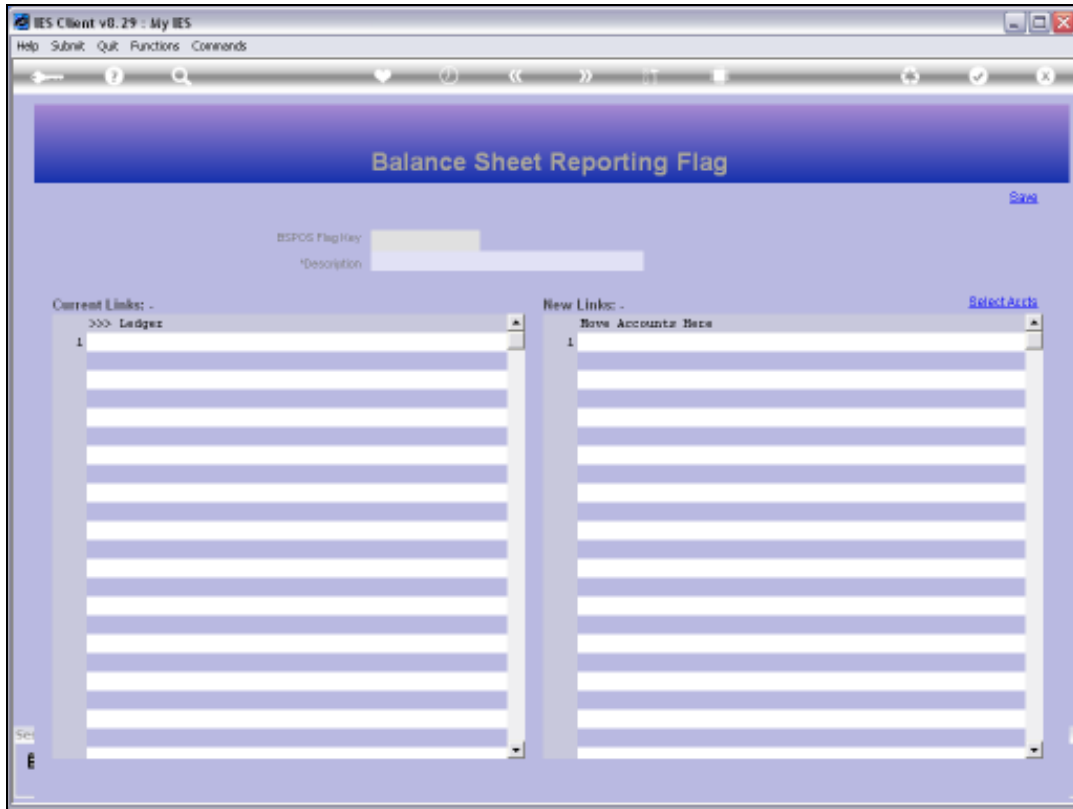


Slide 2
Slide notes:



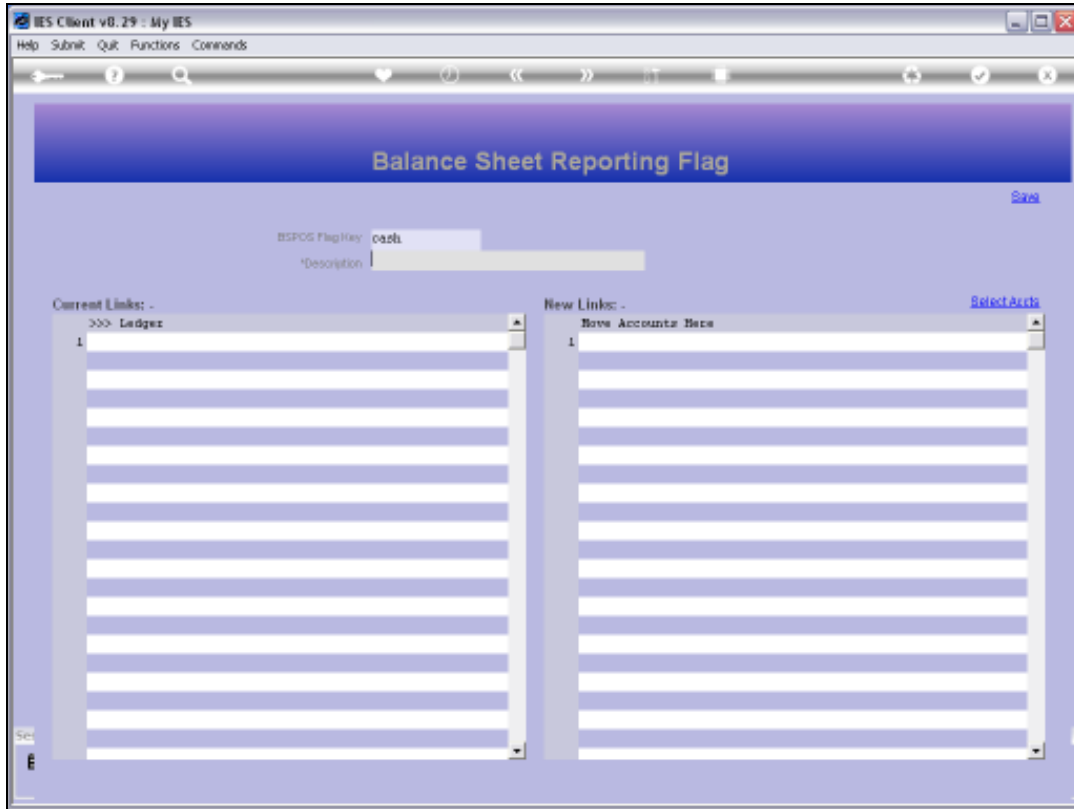
Slide 3

Slide notes:

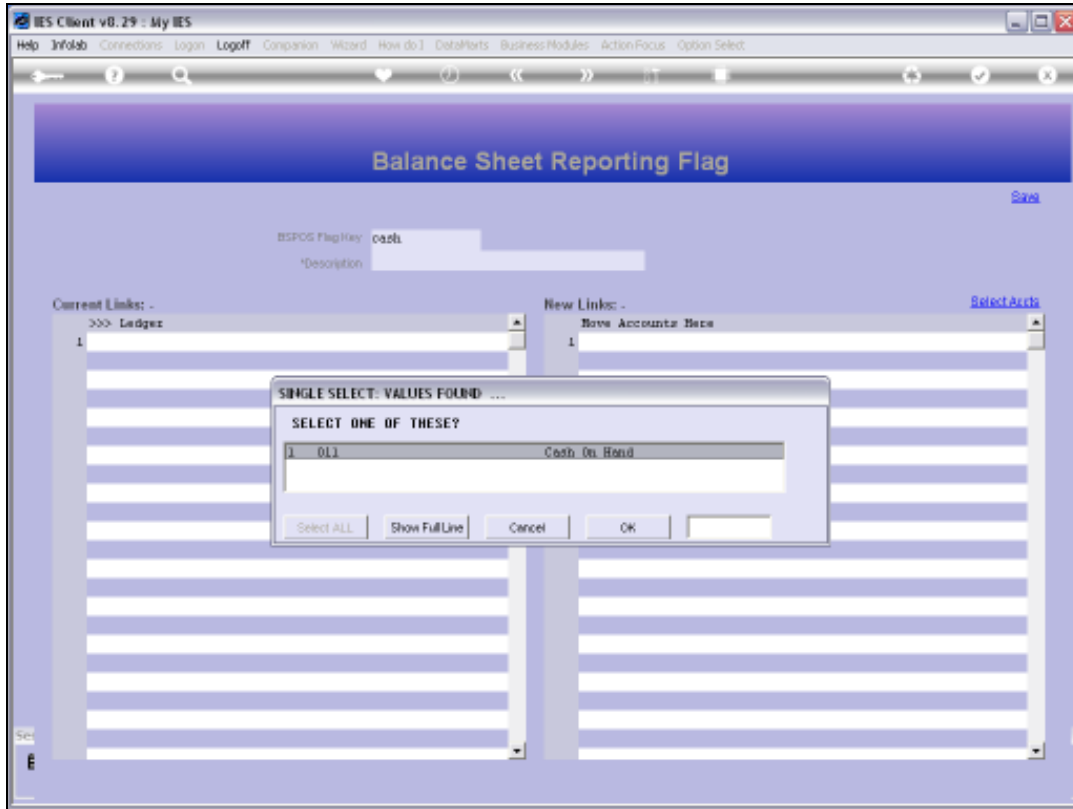


Slide 4

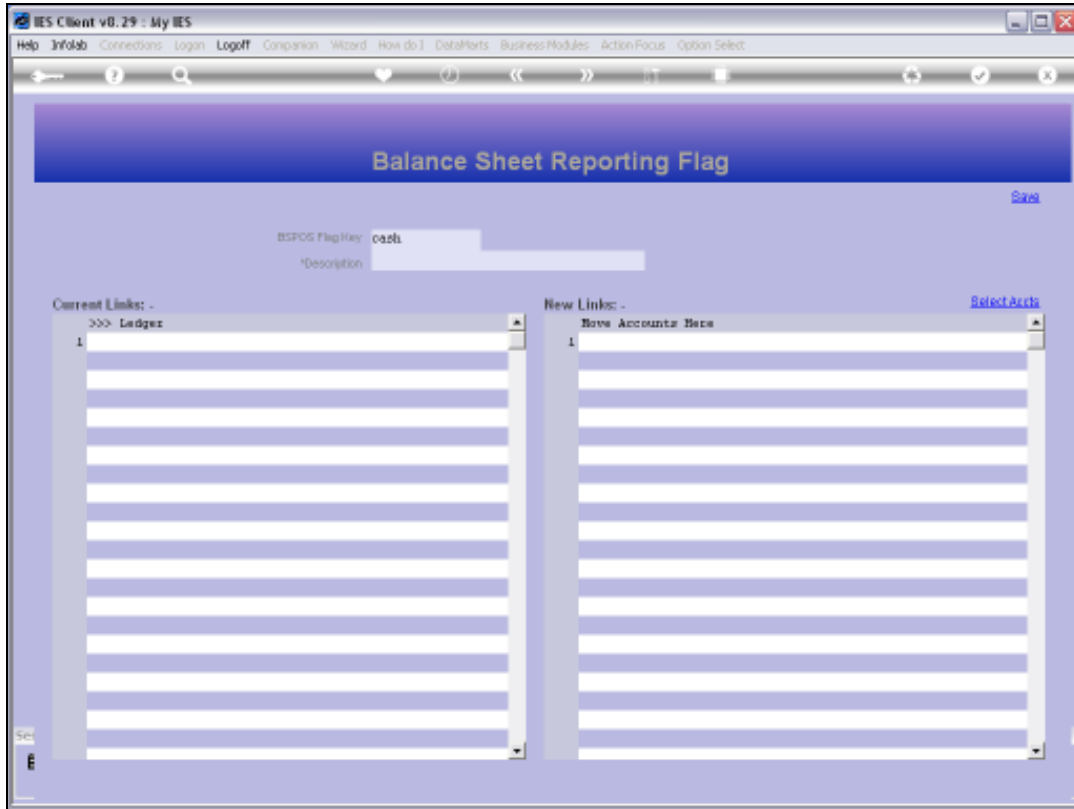
Slide notes: The usual lookups are available to retrieve an existing Balance Sheet Report Flag, or else, to define a new one, we can assign our own unique short Key.



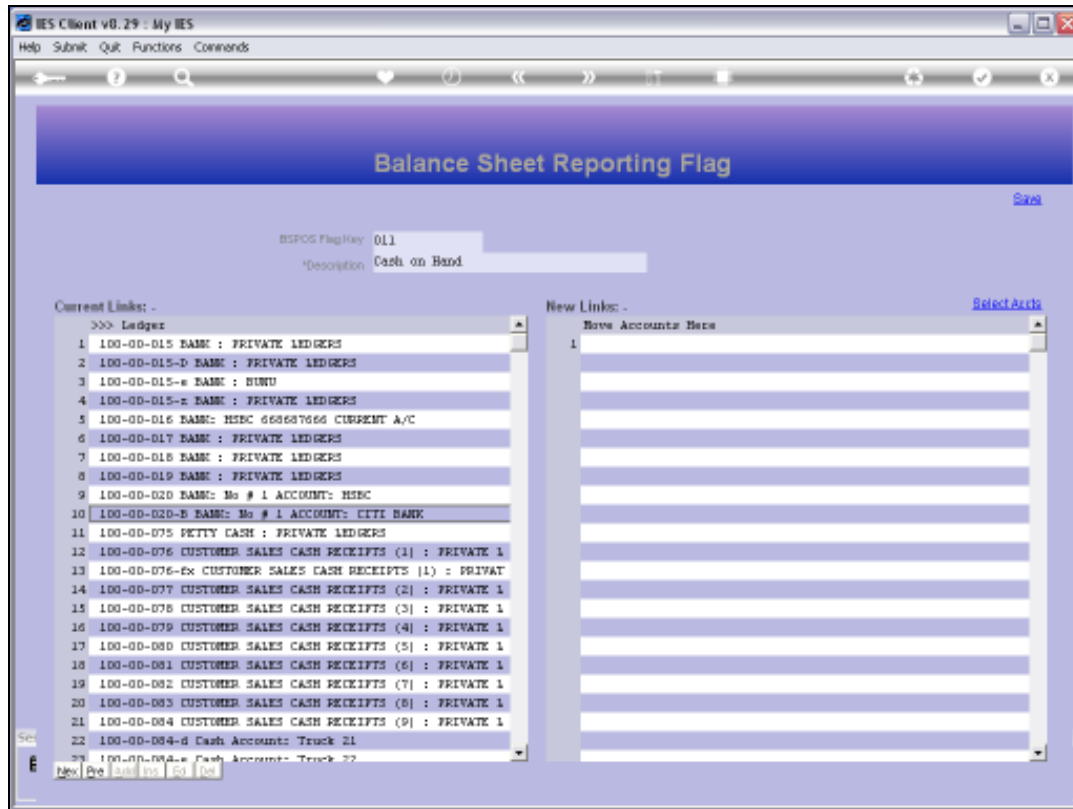
Slide 5
Slide notes:



Slide 6
Slide notes:

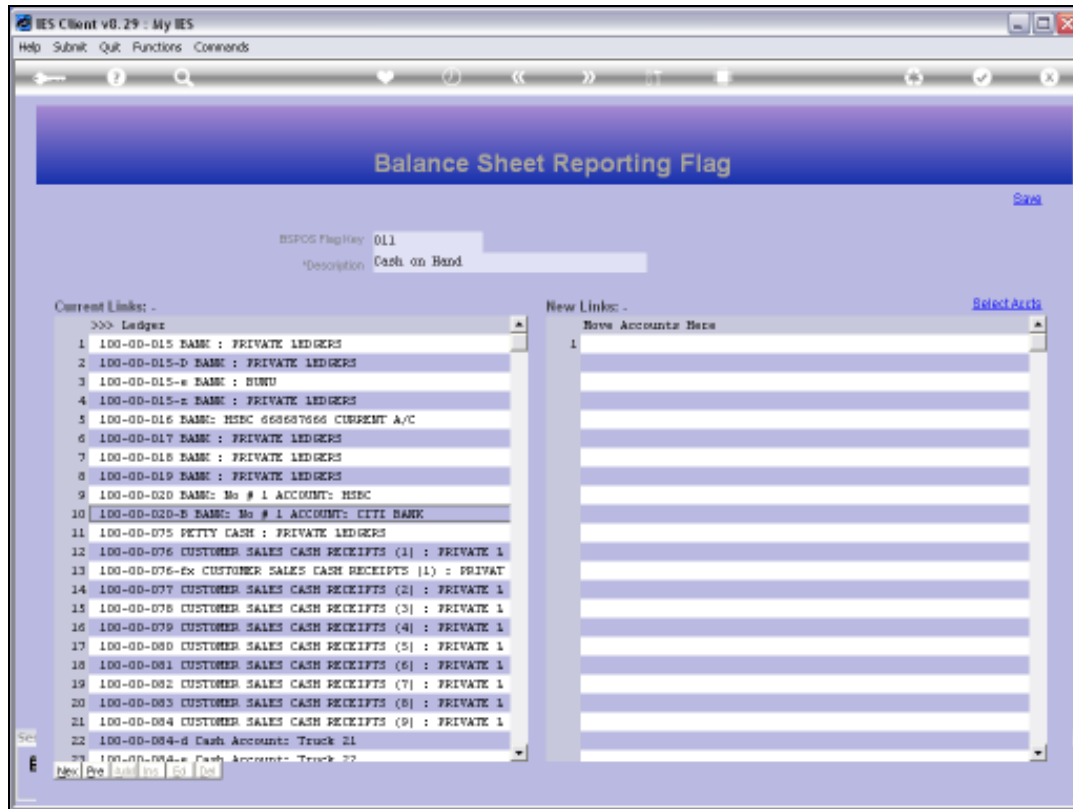


Slide 7
Slide notes:



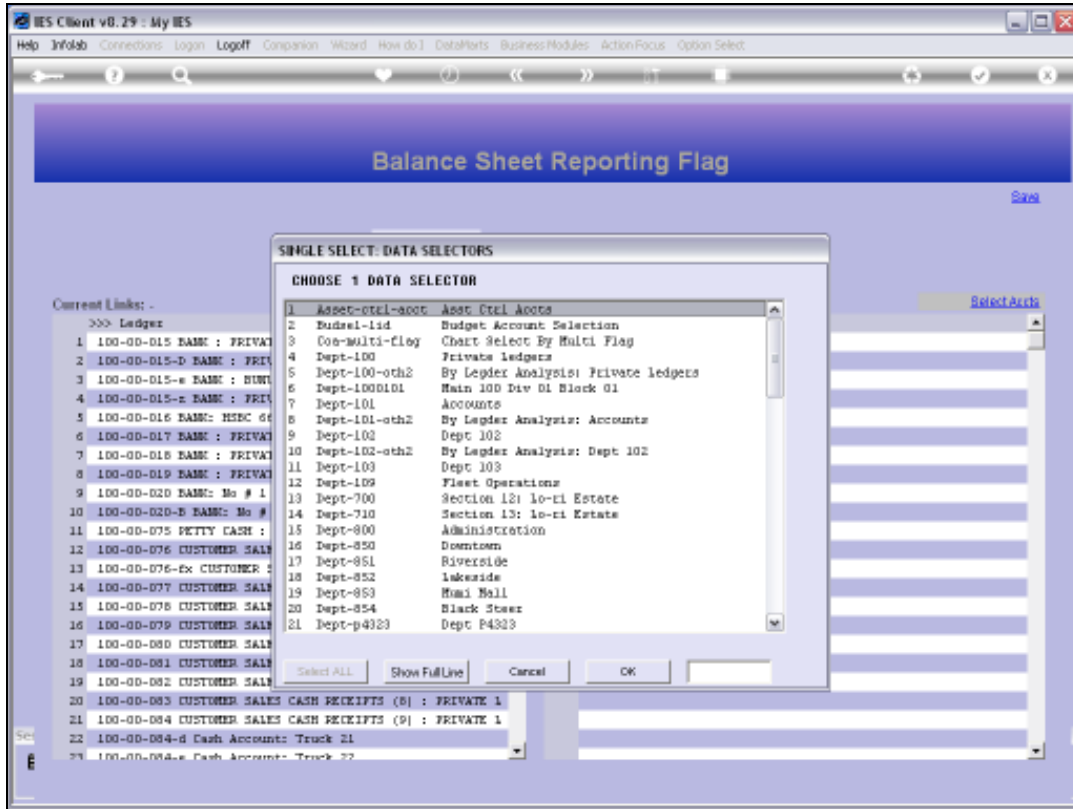
Slide 8

Slide notes: What is a Balance Sheet Report Flag? It is an indicator that we use on Ledger Accounts, each of which must have 1 Balance Sheet Report Flag, and the Flag is an indication on the GL Account of which cell on the Balance Sheet will include the Account Values. There must also be at least 1 Balance Sheet Flag for P&L, alternately called Income / Expense, so that P&L Accounts can show that Flag for Balance Sheet. P&L Accounts are anyway included on the Balance Sheet at Unappropriated Profit/Loss or Trading Position.



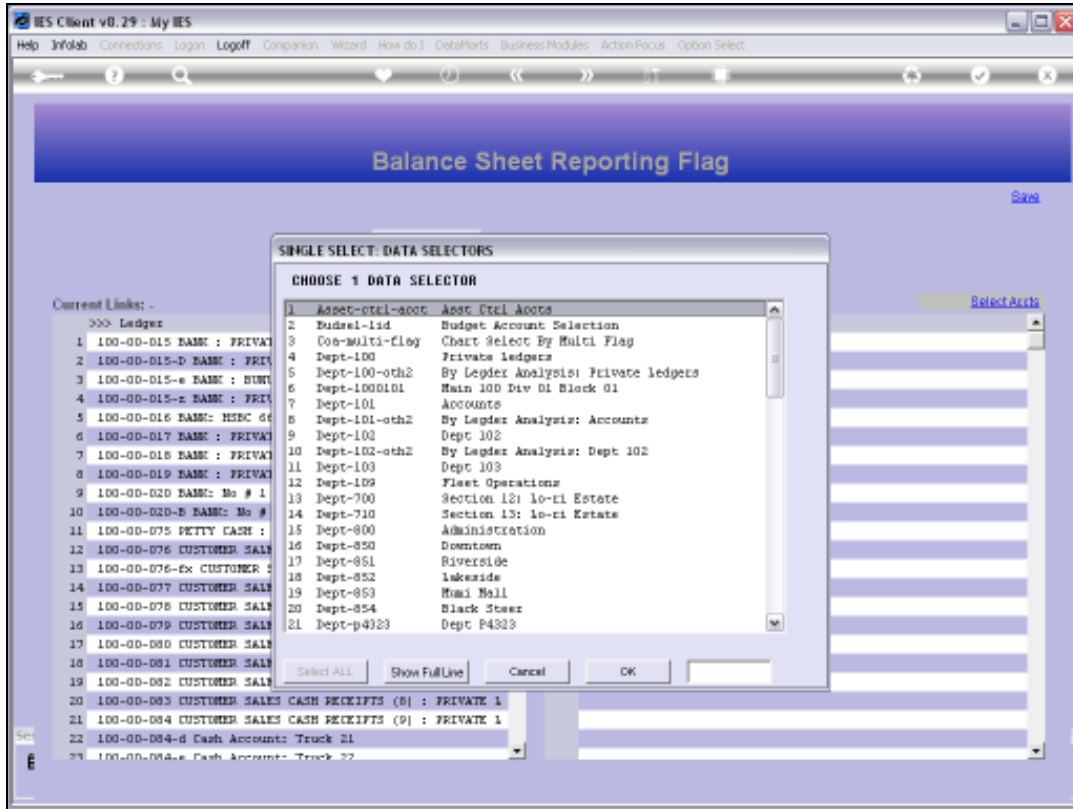
Slide 9

Slide notes: When we define a new Balance Sheet Report Flag, we only assign the Key and Name for the Flag. The Current Links appear automatically when the Flag is assigned on an Account, and that can be done with the Chart wizard, or manually on the Account, or by listing new Accounts at 'New Links' and then saving the Flag.

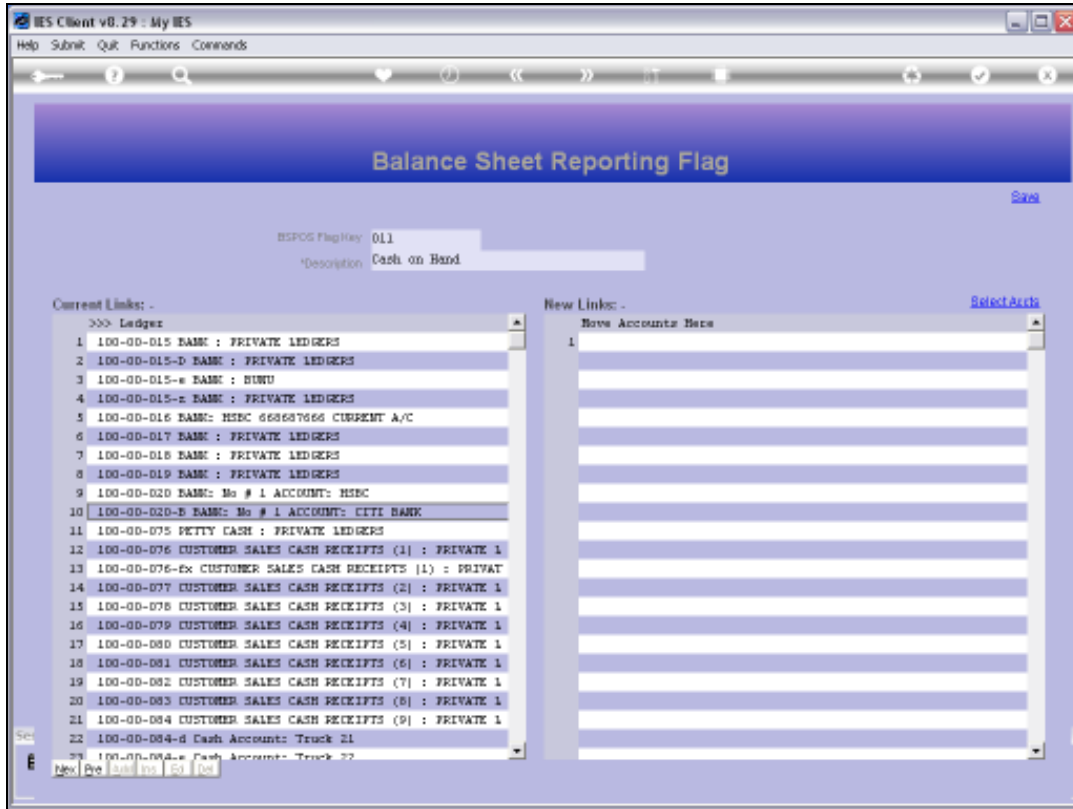


Slide 10

Slide notes: The 'Select Accounts' function will offer all Ledger Selection methods to choose from, so that we can easily select the Accounts we want to include.

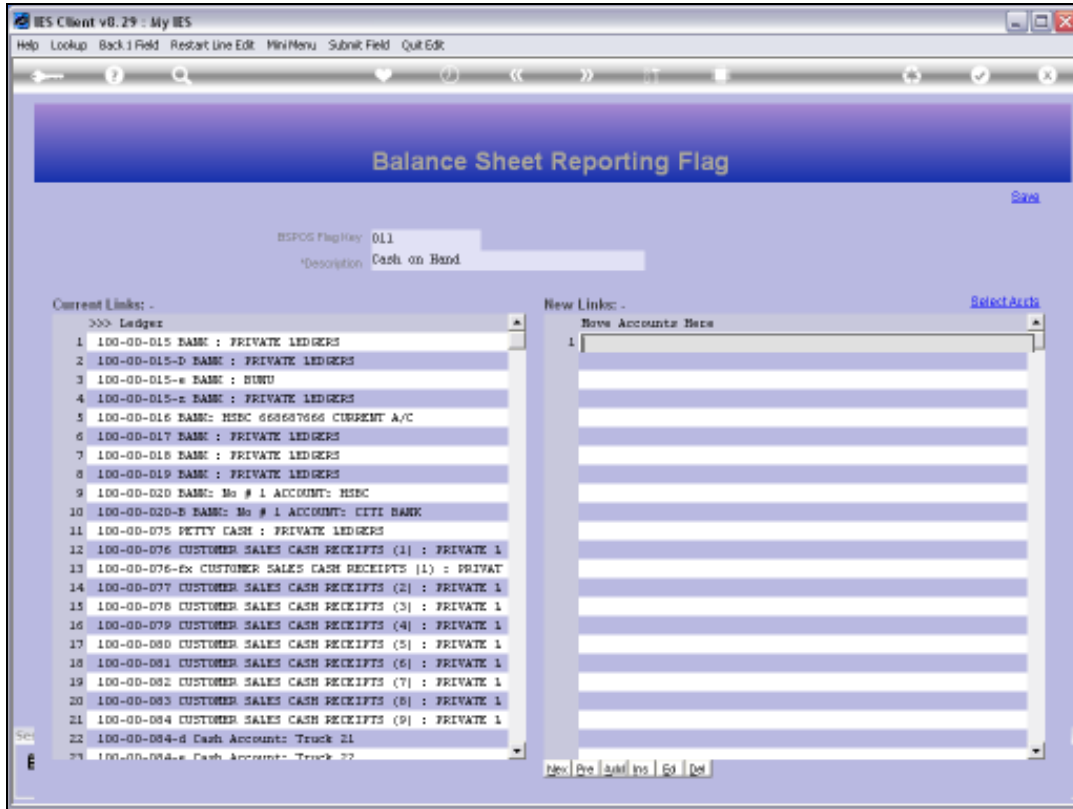


Slide 11
Slide notes:

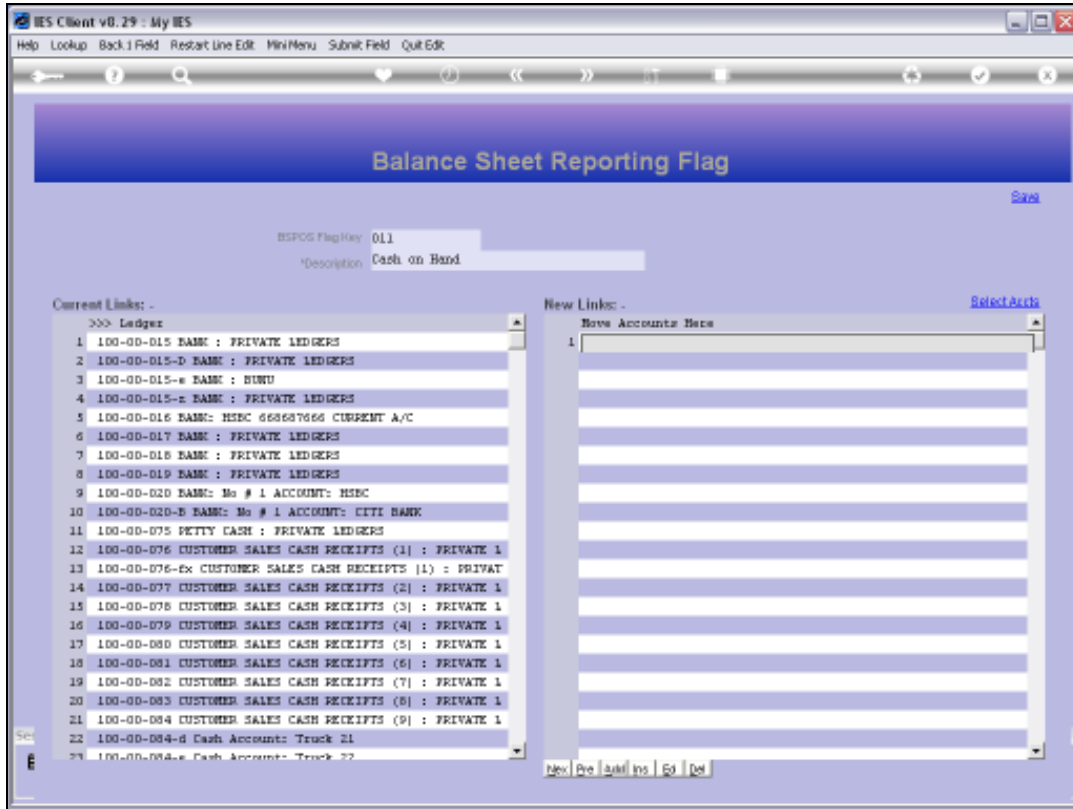


Slide 12

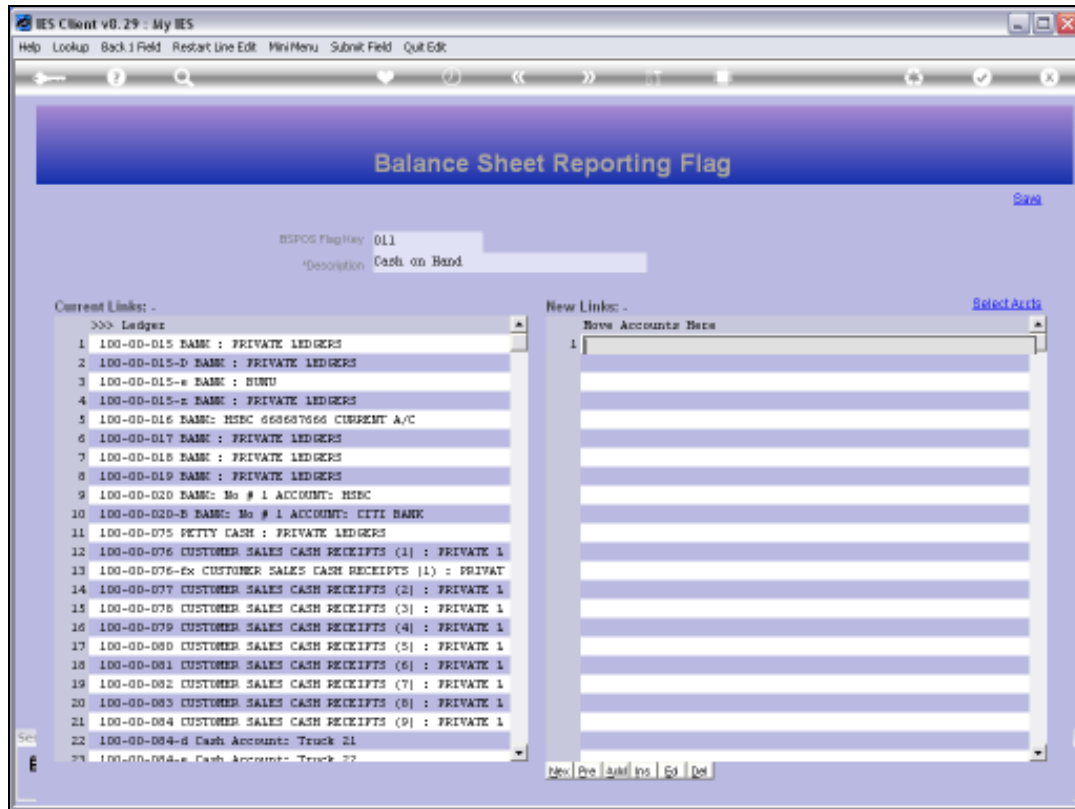
Slide notes: Or we can manually lookup and list Accounts at 'New Links'.



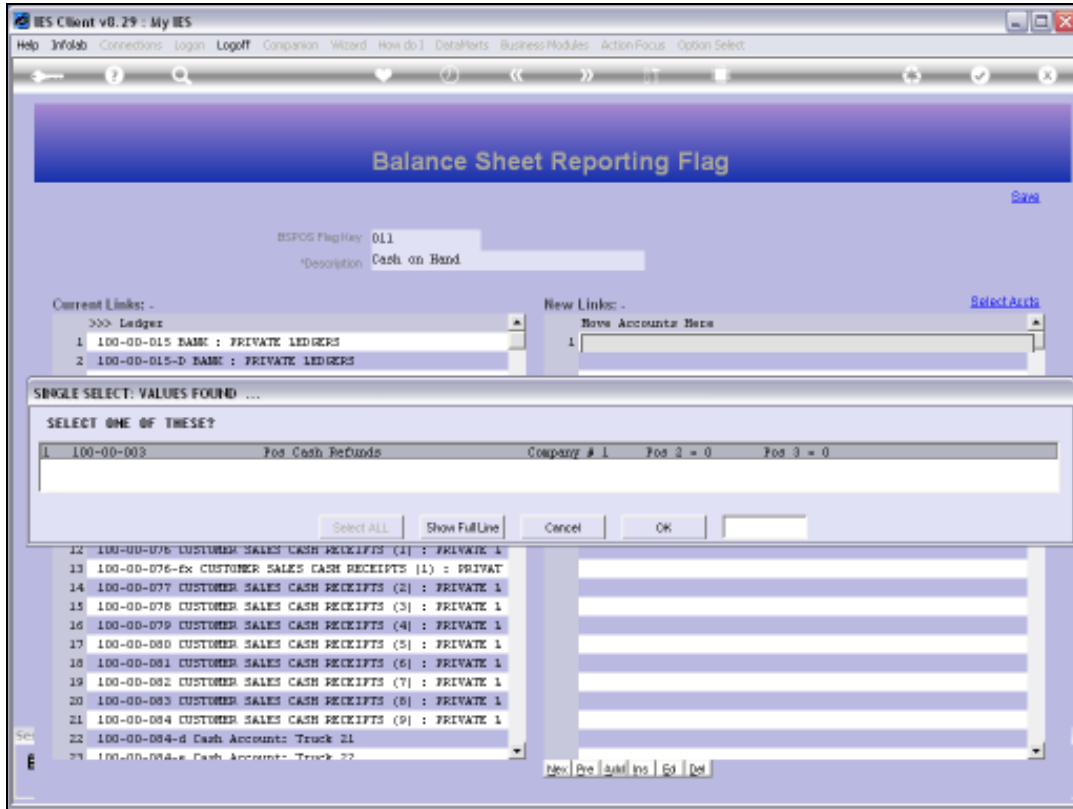
Slide 13
Slide notes:



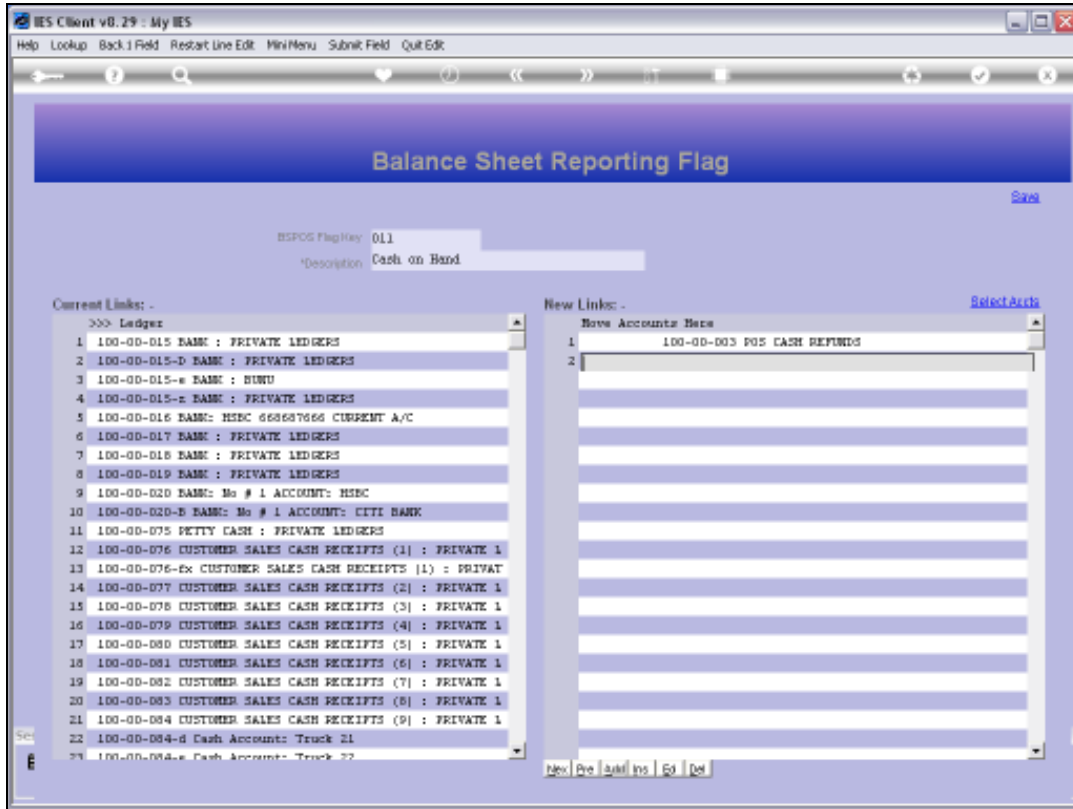
Slide 14
Slide notes:



Slide 15
Slide notes:

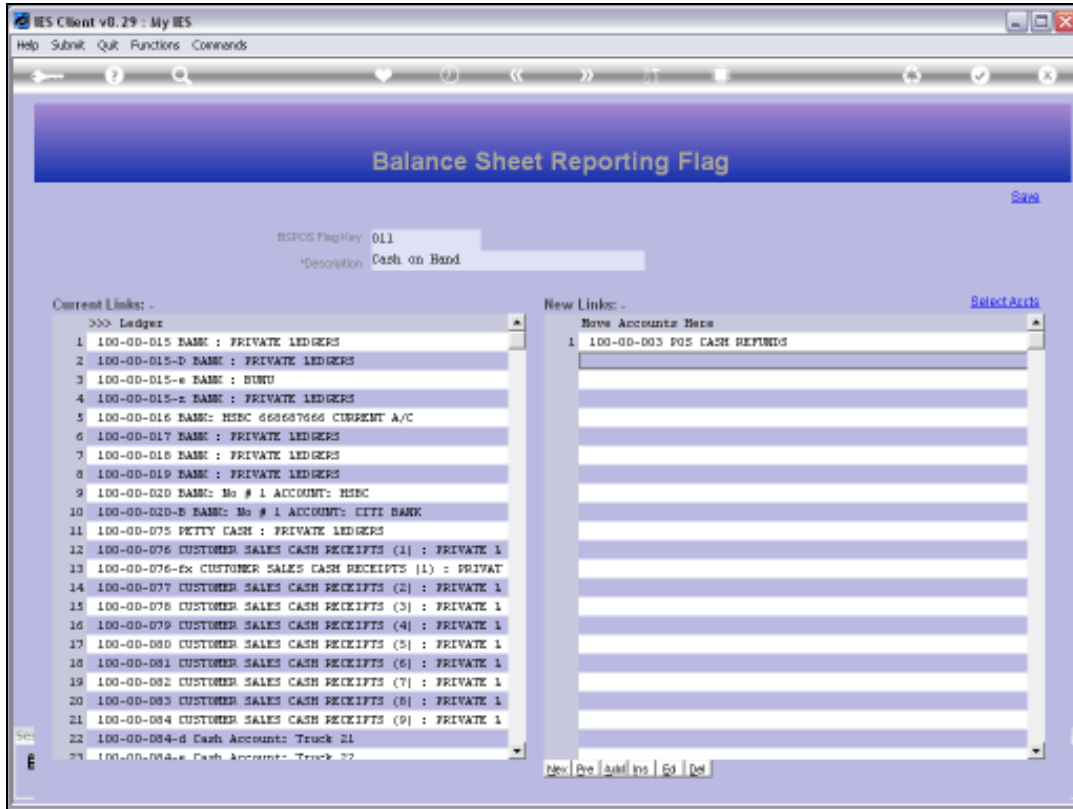


Slide 16
Slide notes:

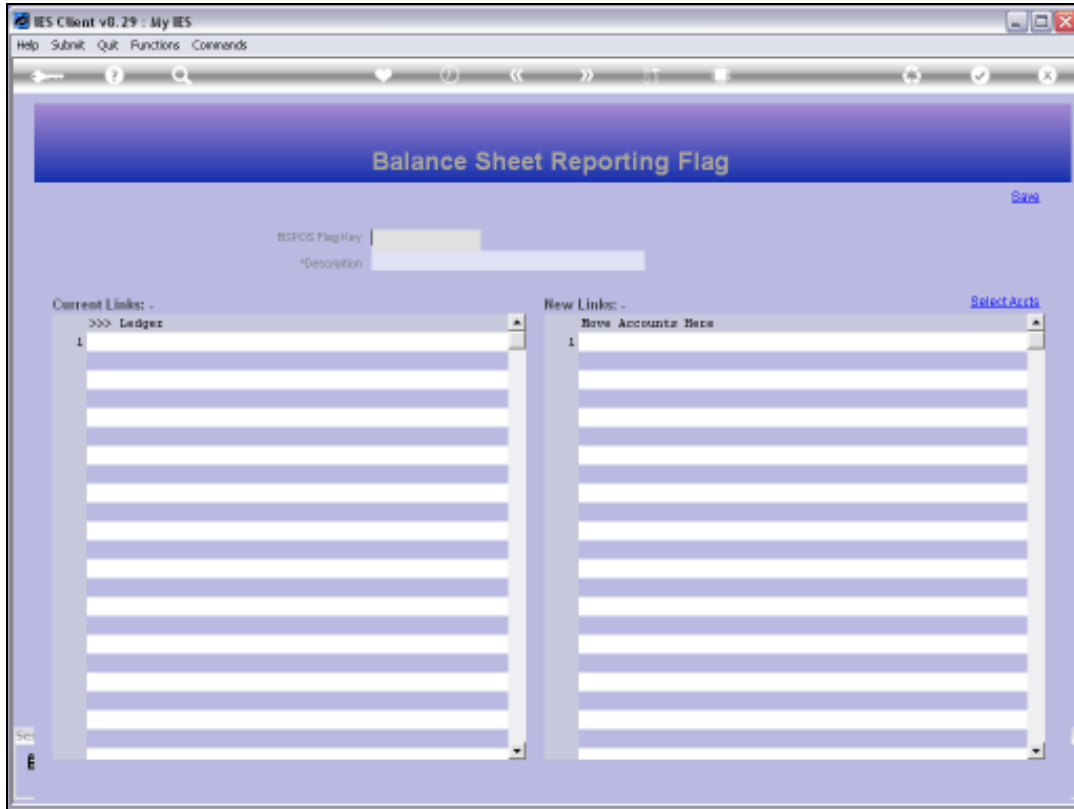


Slide 17

Slide notes: So if we save this Flag, with any Accounts listed at 'New Links', then these Flags will be updated on the target Ledger Accounts and will then appear at 'Current Links' next time we open the Flag.

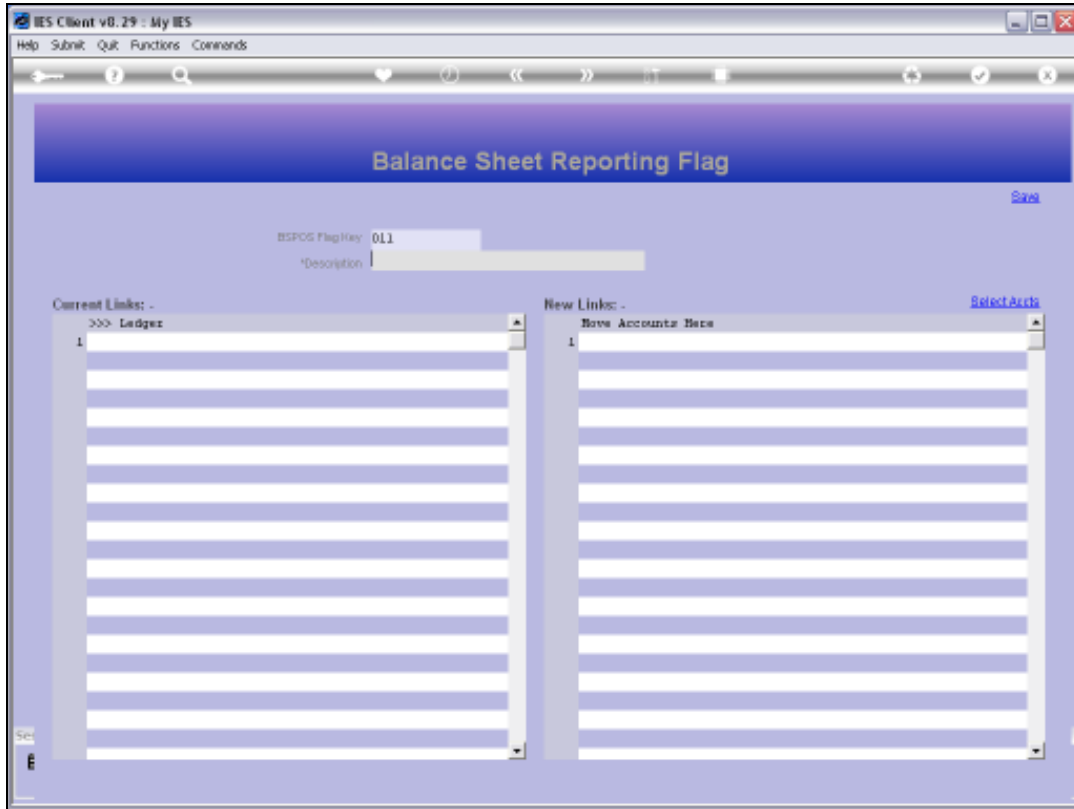


Slide 18
Slide notes:



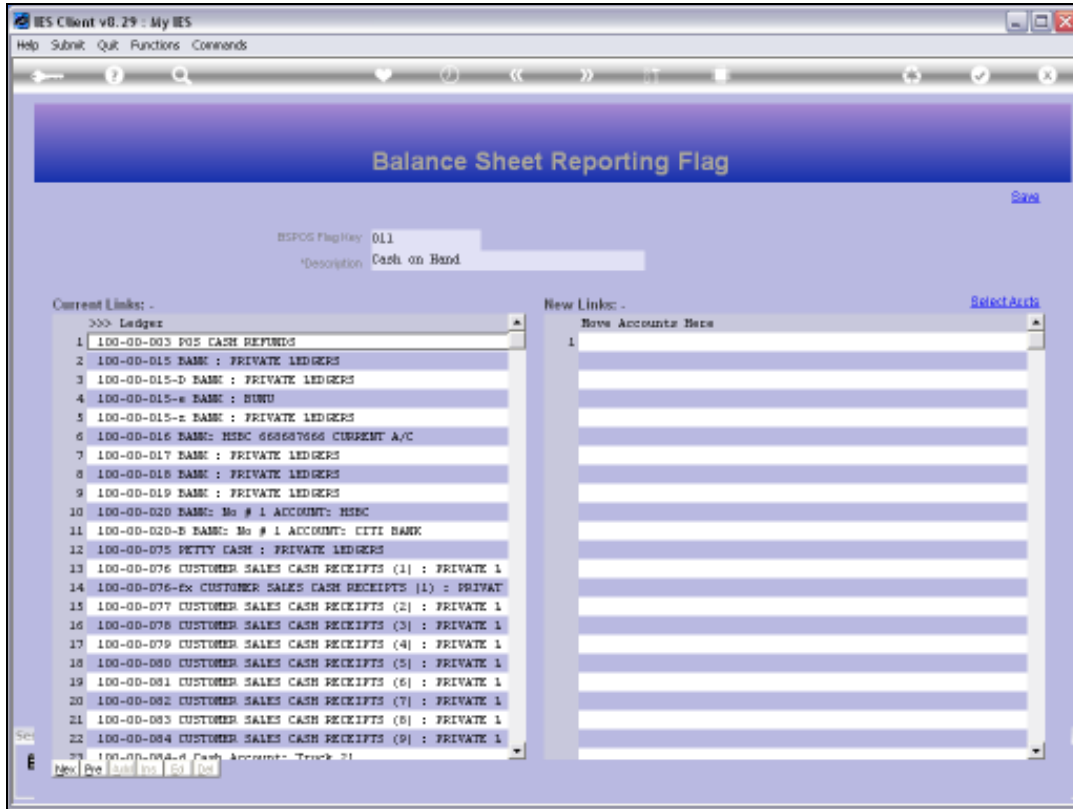
Slide 19

Slide notes:



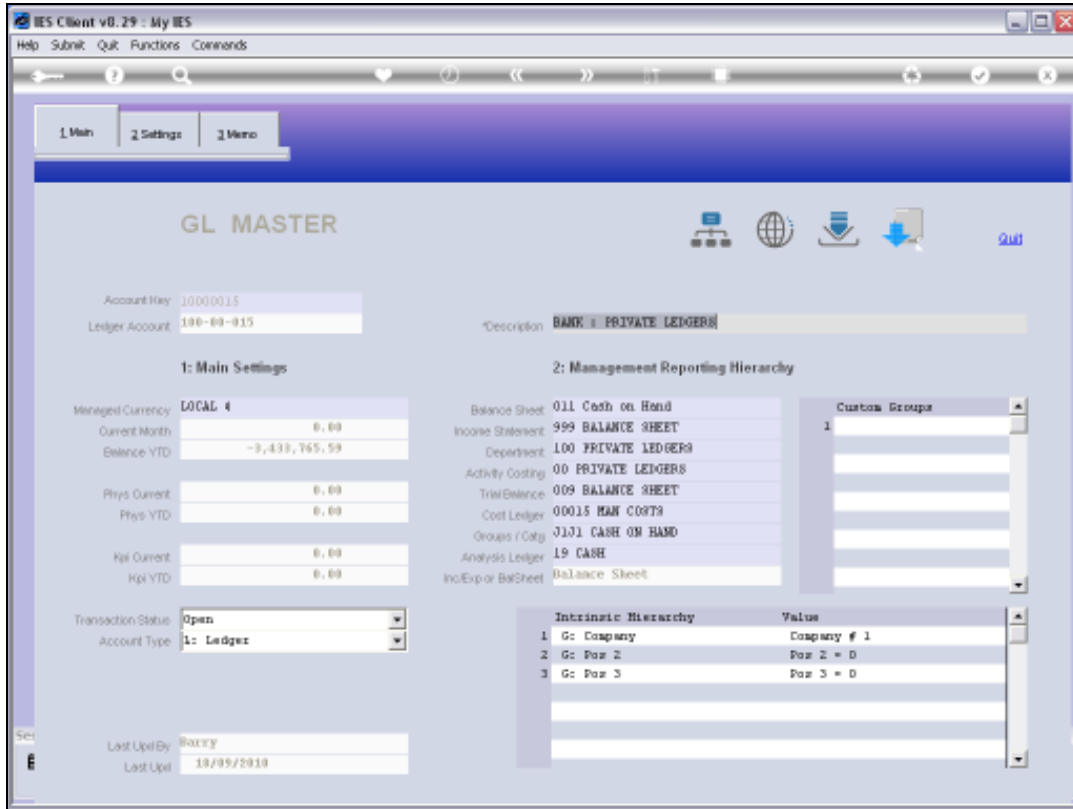
Slide 20

Slide notes:

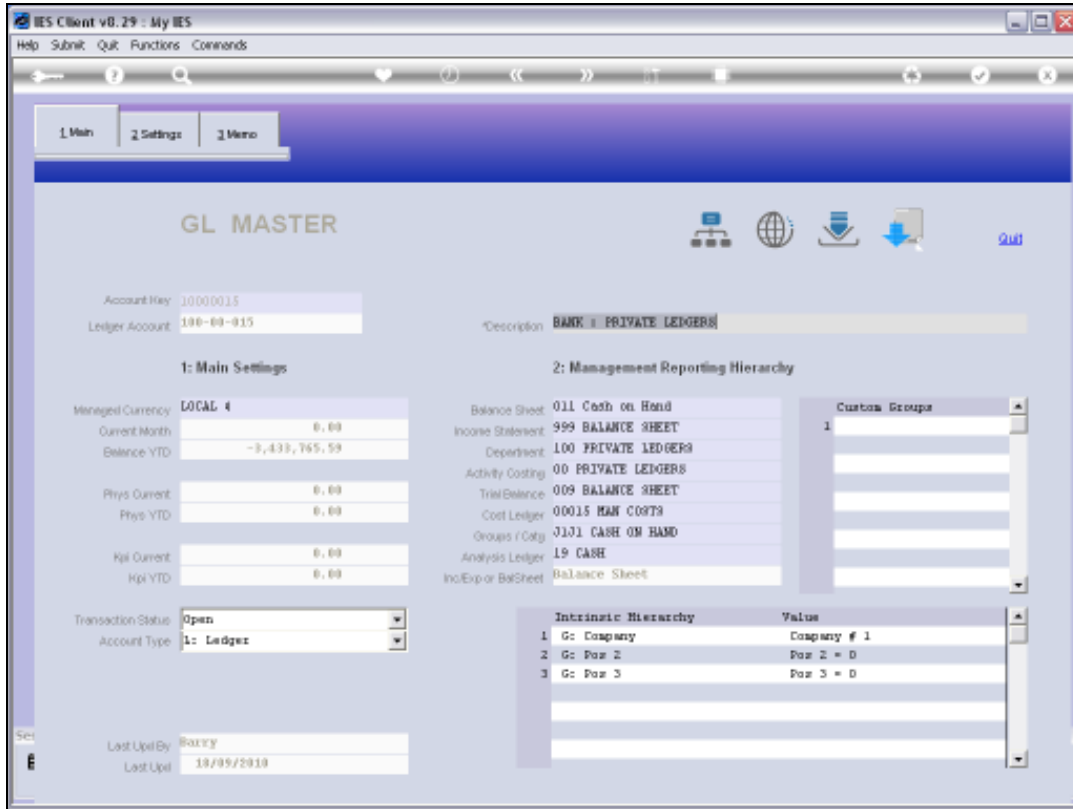


Slide 21

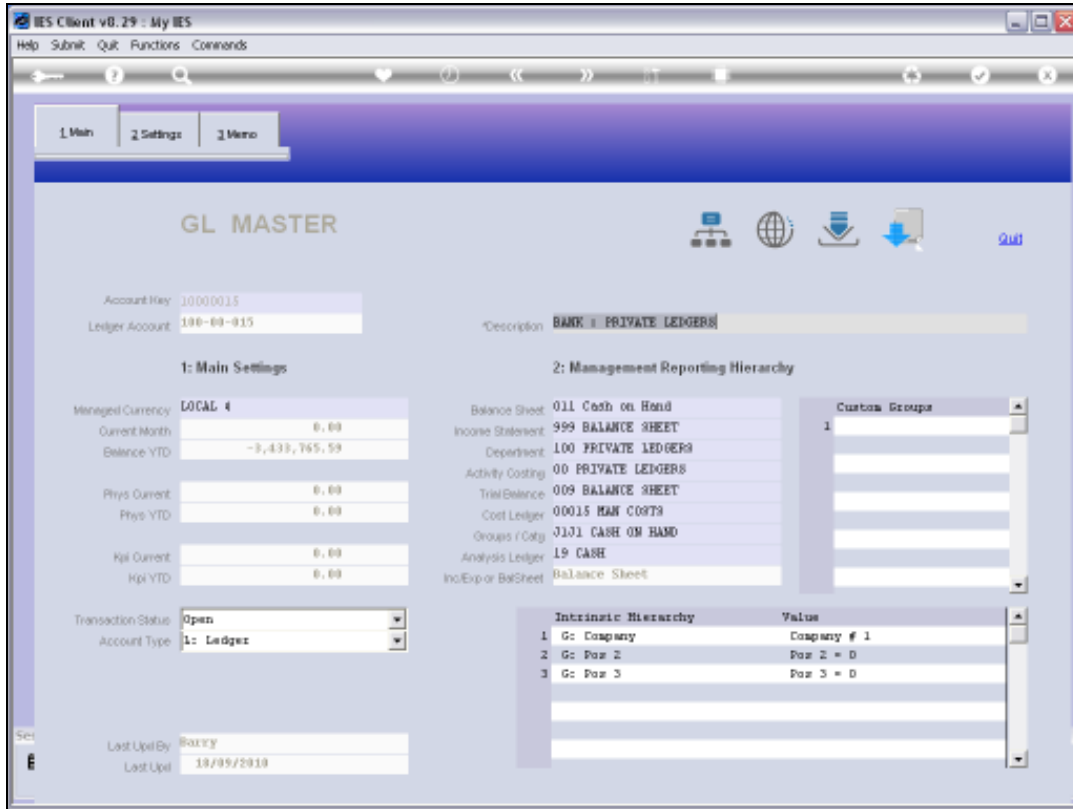
Slide notes: And now we can see the 'new addition' Account listed at 'Current Links'. We can drill any listed Account, and then we will see that this Report Flag is indicated on the Account.



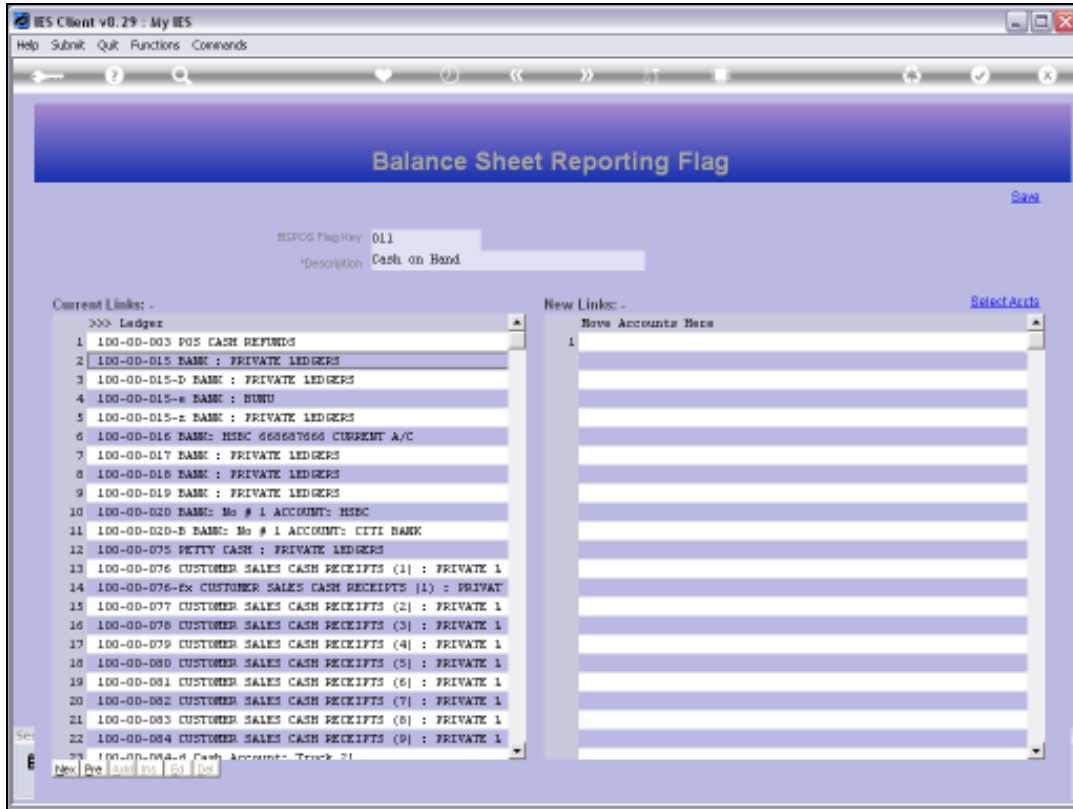
Slide 22
Slide notes:



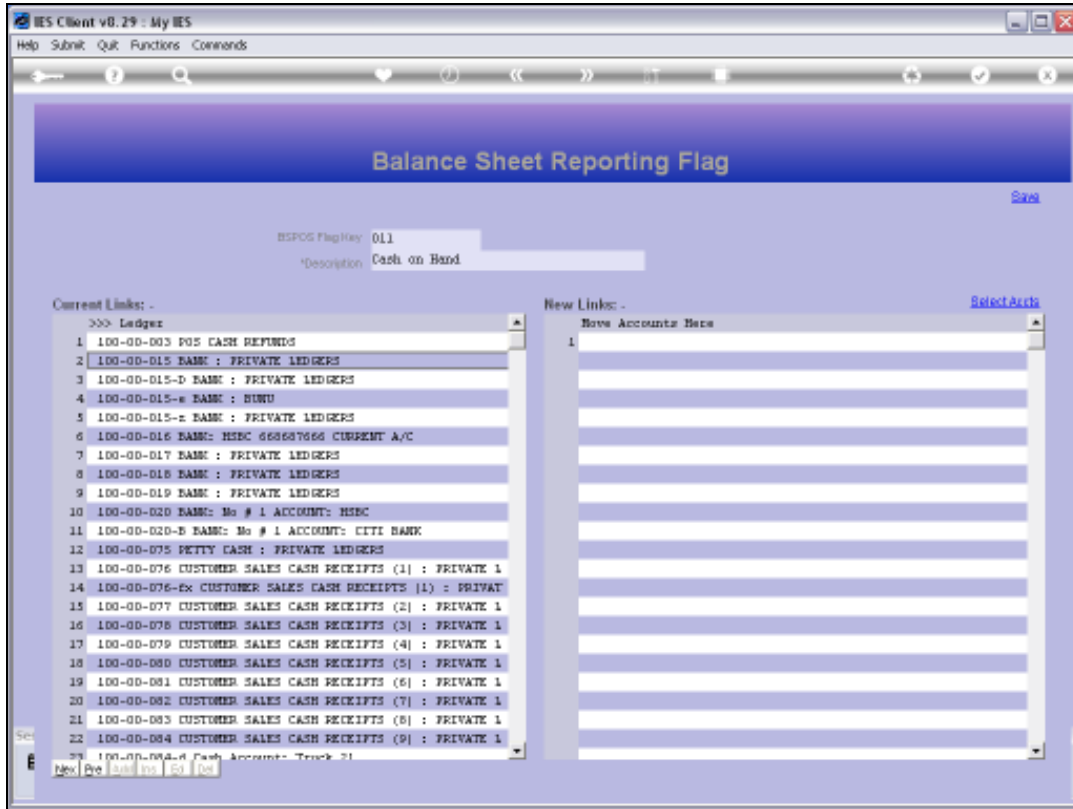
Slide 23
Slide notes:



Slide 24
Slide notes:



Slide 25
Slide notes:



Slide 26

Slide notes: The GL reporting is super flexible. That's why we can easily create new Report Flags whenever we need them, and why we can easily change and adapt Report Flags on the GL Accounts when and as we need to.