

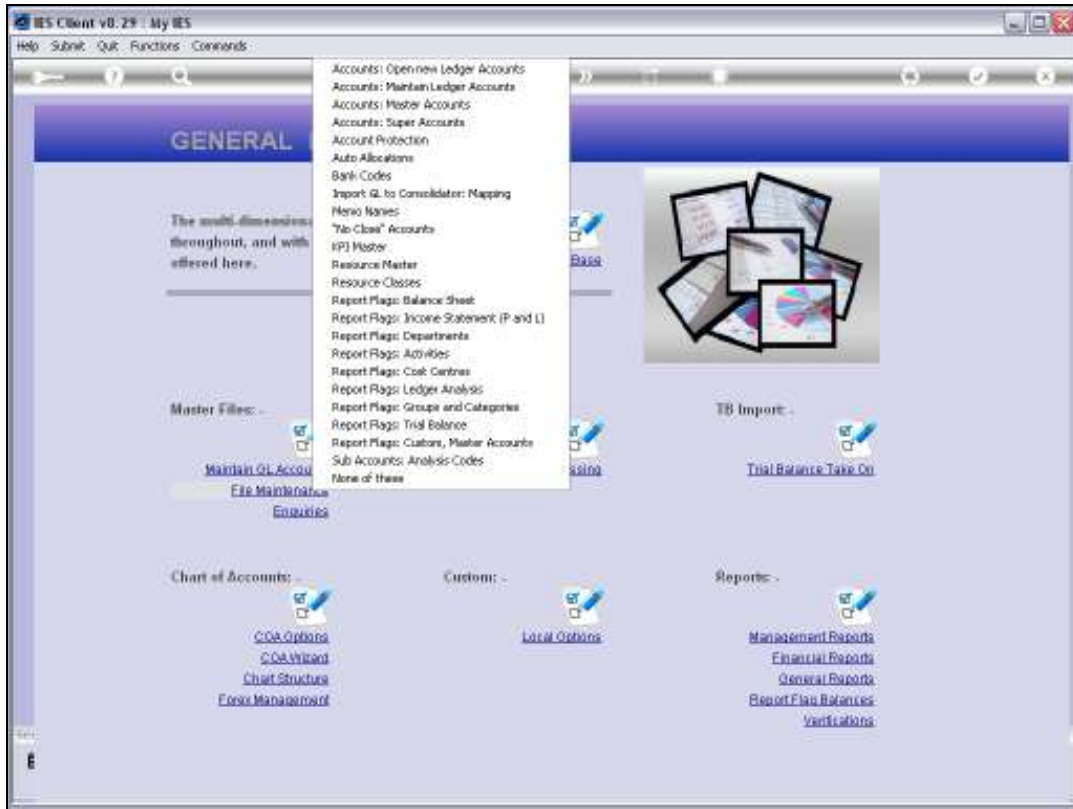


Slide 1

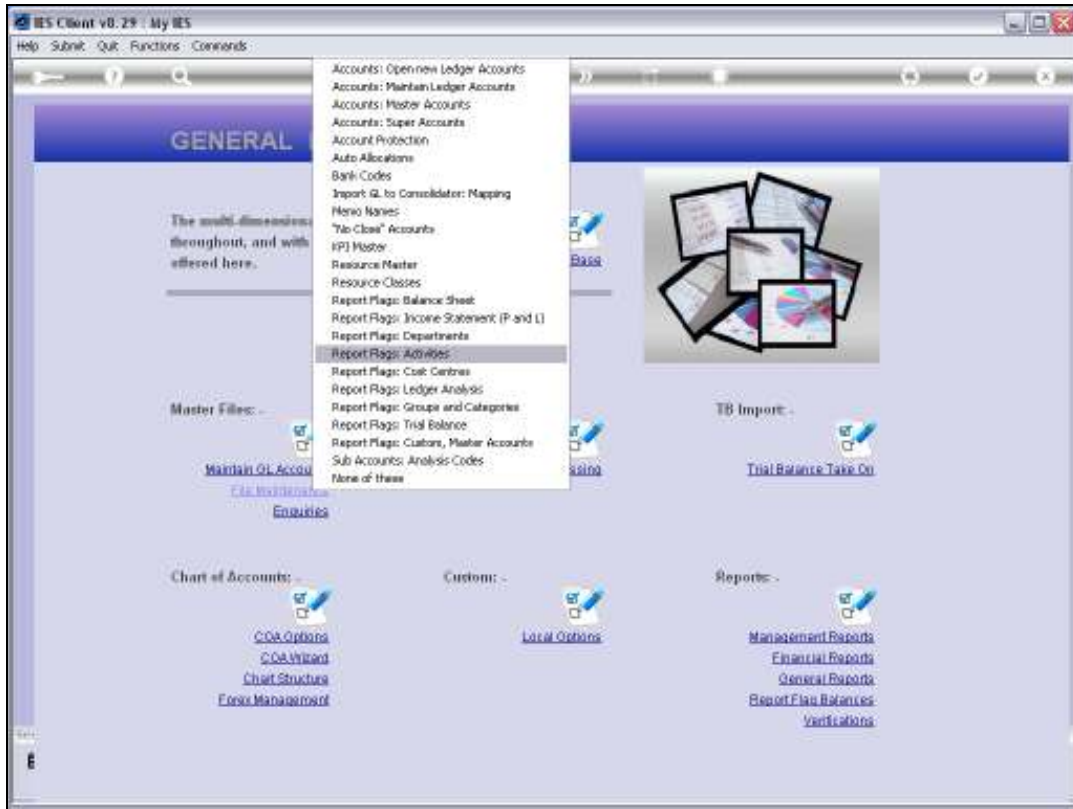
Slide notes: Activity Report Flags can be imported at System Setup, or defined from the Ledger File Maintenance option.



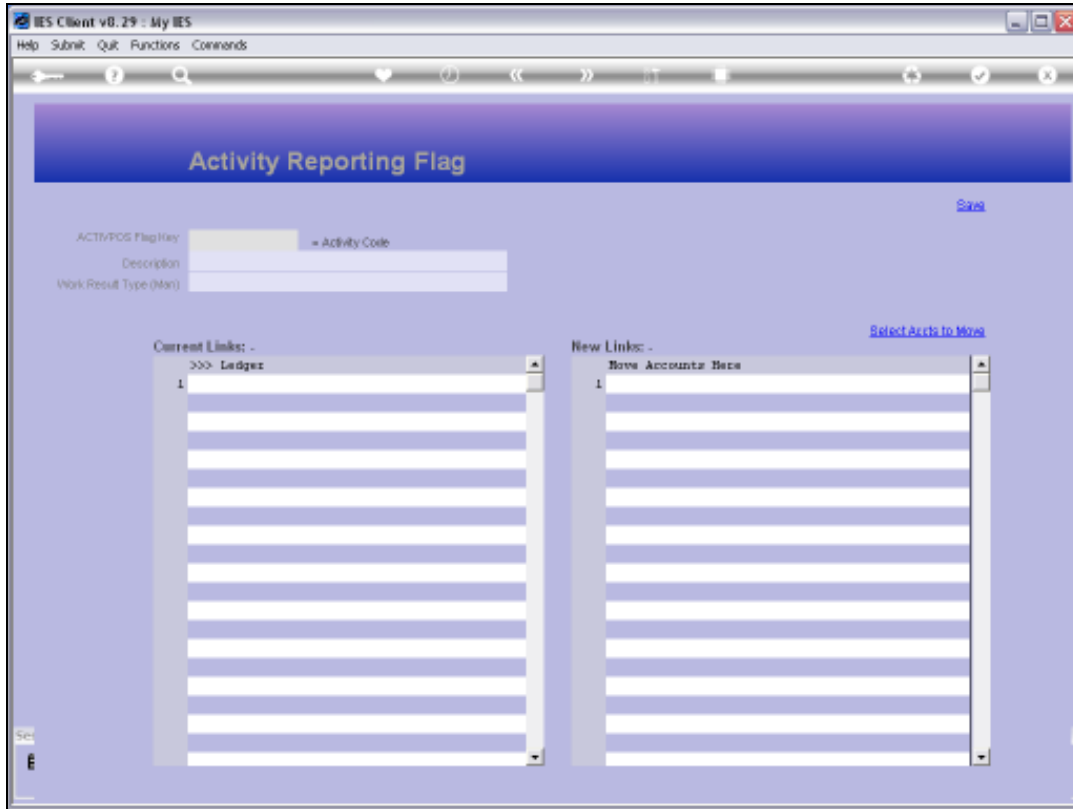
Slide 2
Slide notes:



Slide 3
Slide notes:

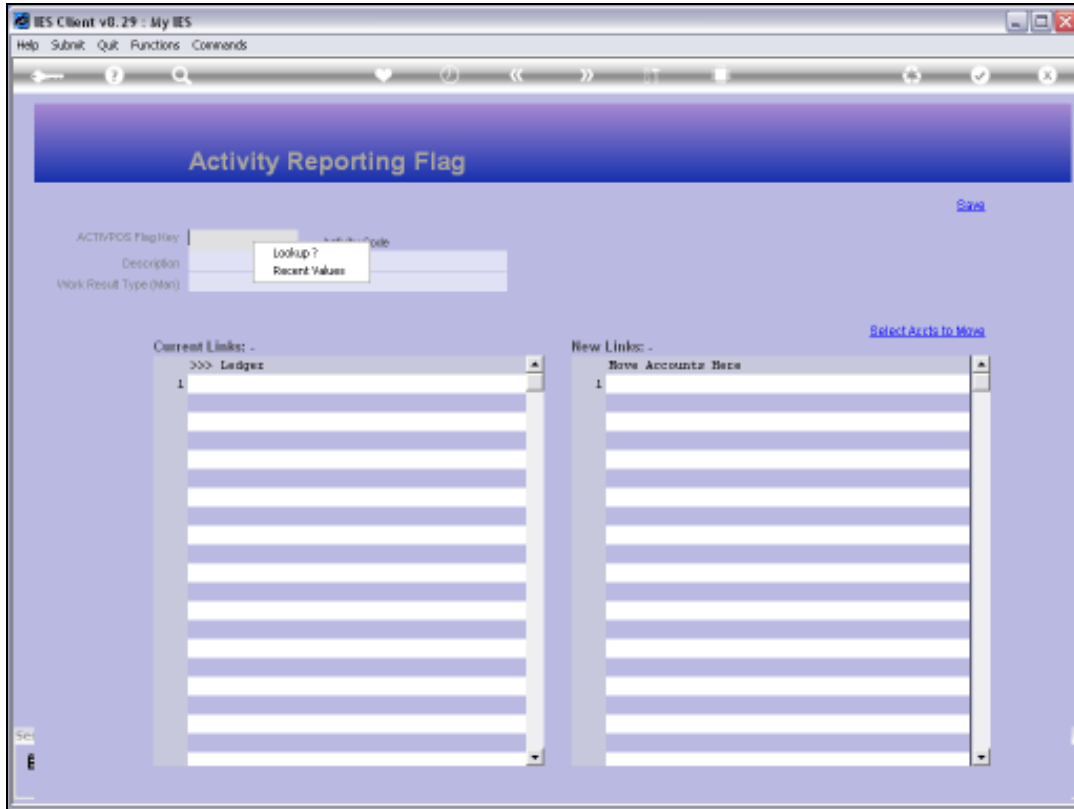


Slide 4
Slide notes:

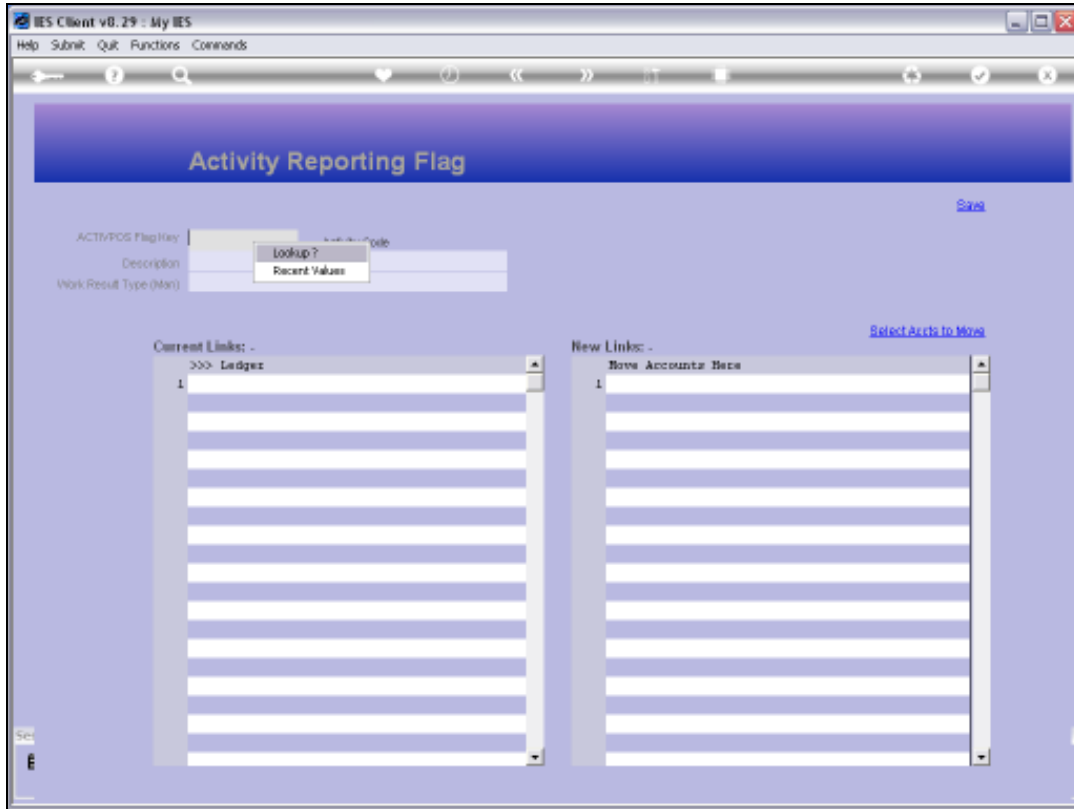


Slide 5

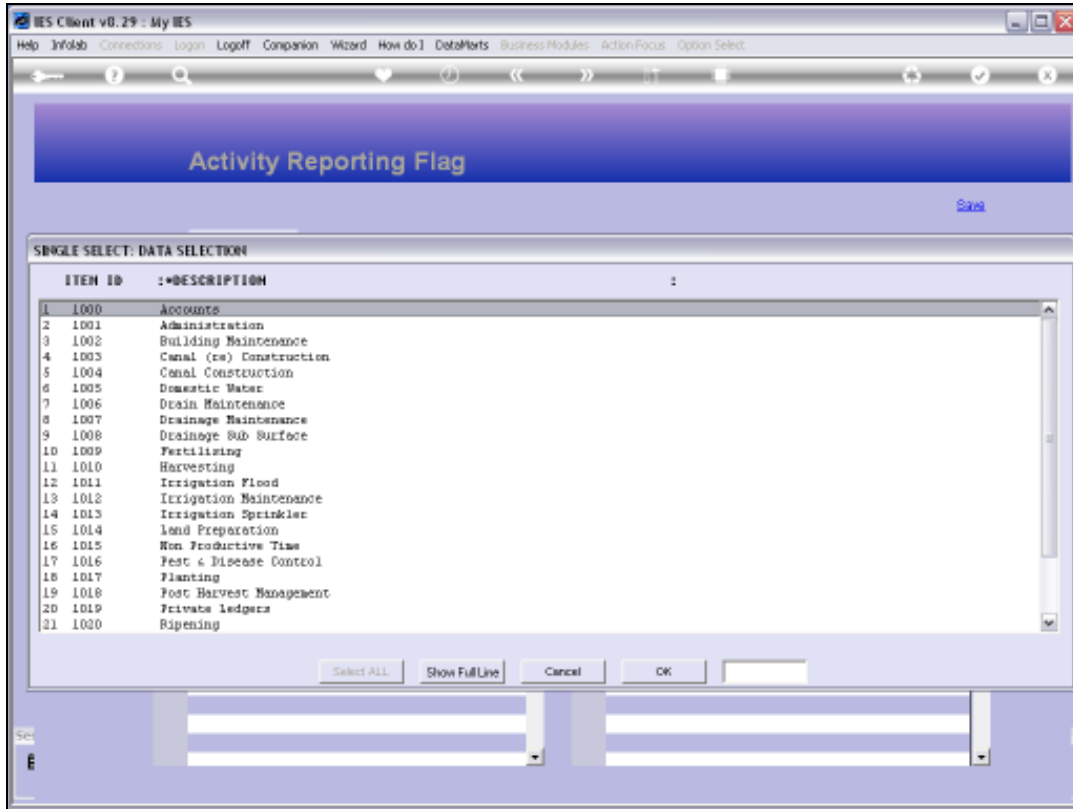
Slide notes: The usual lookups are available for retrieving an existing Flag, or else, to define a new Flag, we may assign a unique short Key and a Name for the Flag.



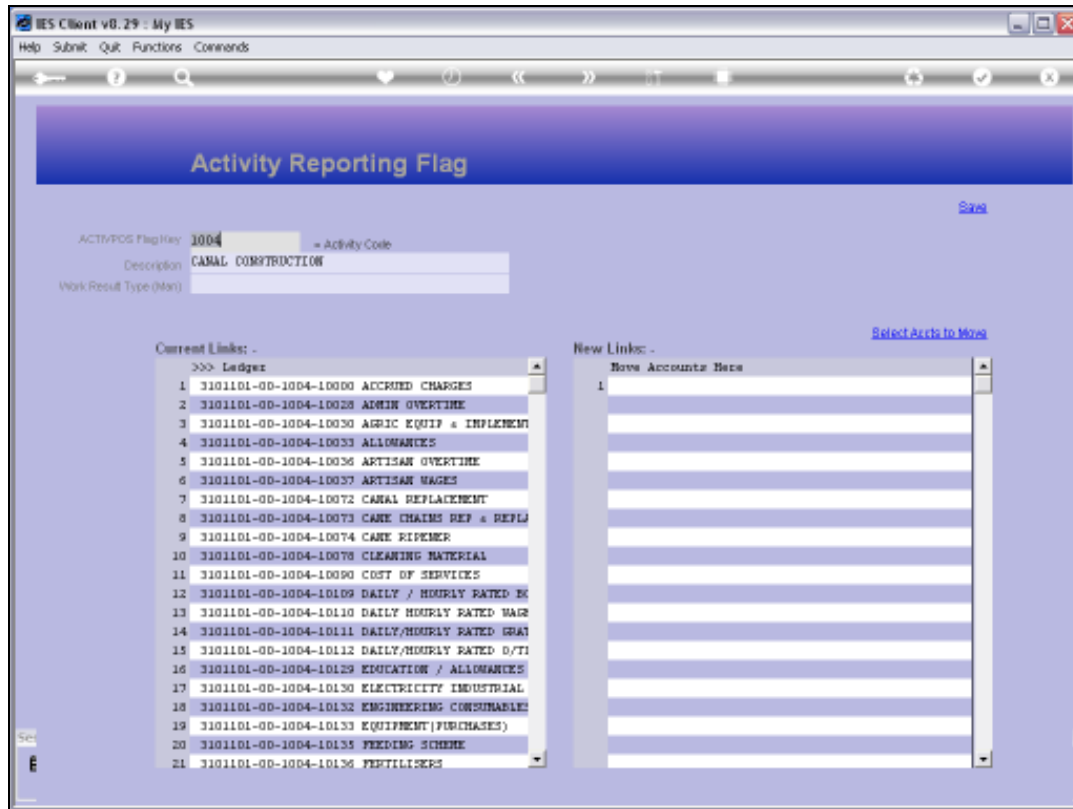
Slide 6
Slide notes:



Slide 7
Slide notes:

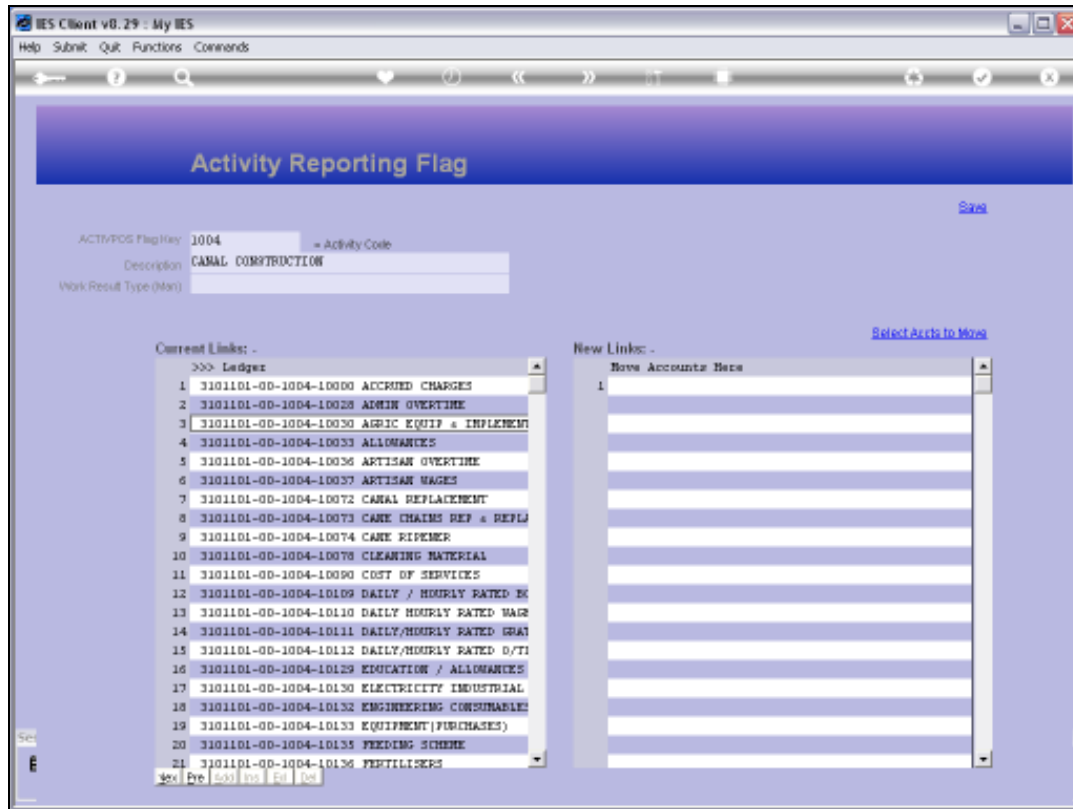


Slide 8
Slide notes:



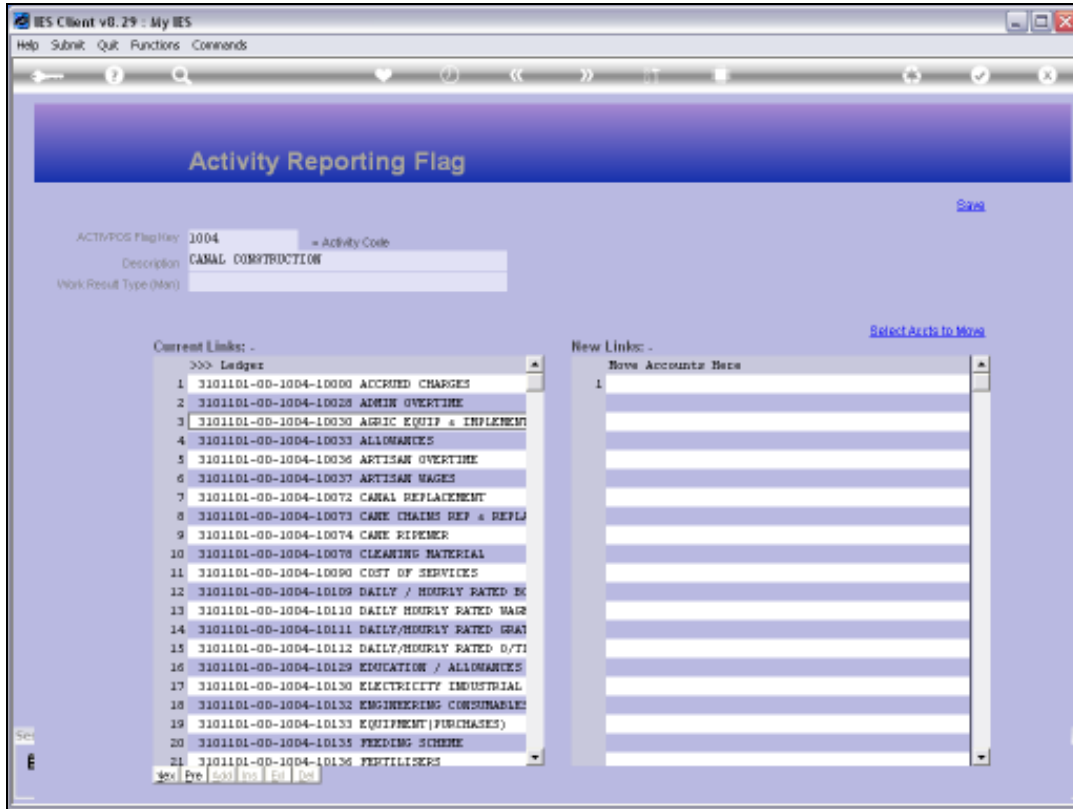
Slide 9

Slide notes: Any GL Accounts that currently use this Flag will be listed at 'Current Links'.



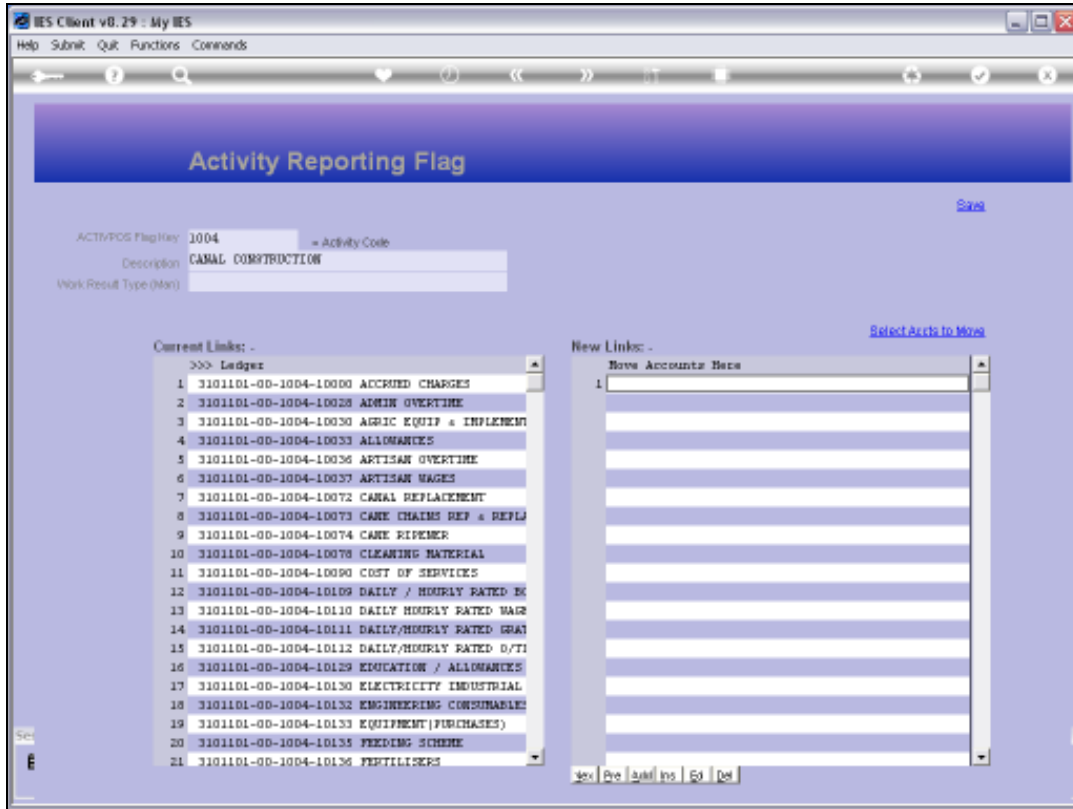
Slide 10

Slide notes: We may use the 'Select Accounts' function to select Accounts that should use this Flag, or we can manually lookup and list them at 'New Links'. When we save the Flag, any Accounts listed at 'New Links' will be updated to use the Flag, and next time we open the same Flag those Accounts will be included at 'Current Links'.

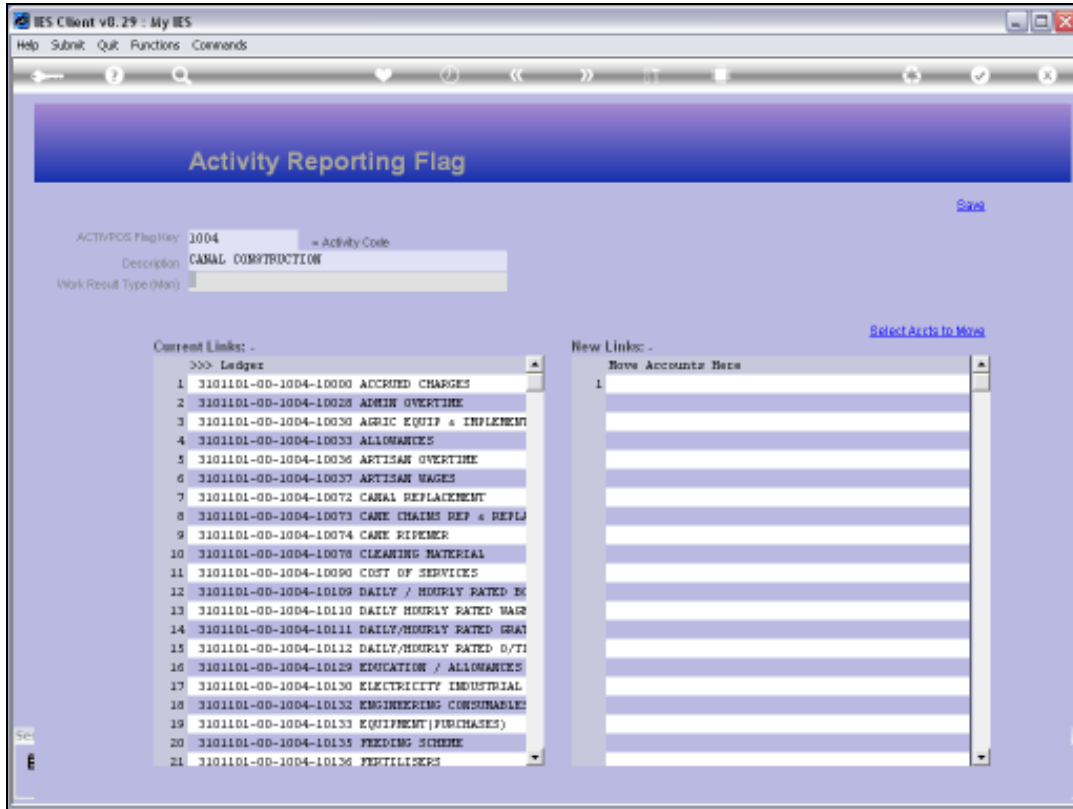


Slide 11

Slide notes: So what is the Activity Report Flag? We use the various types of Report Flags for GL Reporting, for Lookups and for Data Selection. The Flags, when assigned to Accounts, provide us with easy ways to select the Accounts that have a certain Flag, total them on Reports, etc.

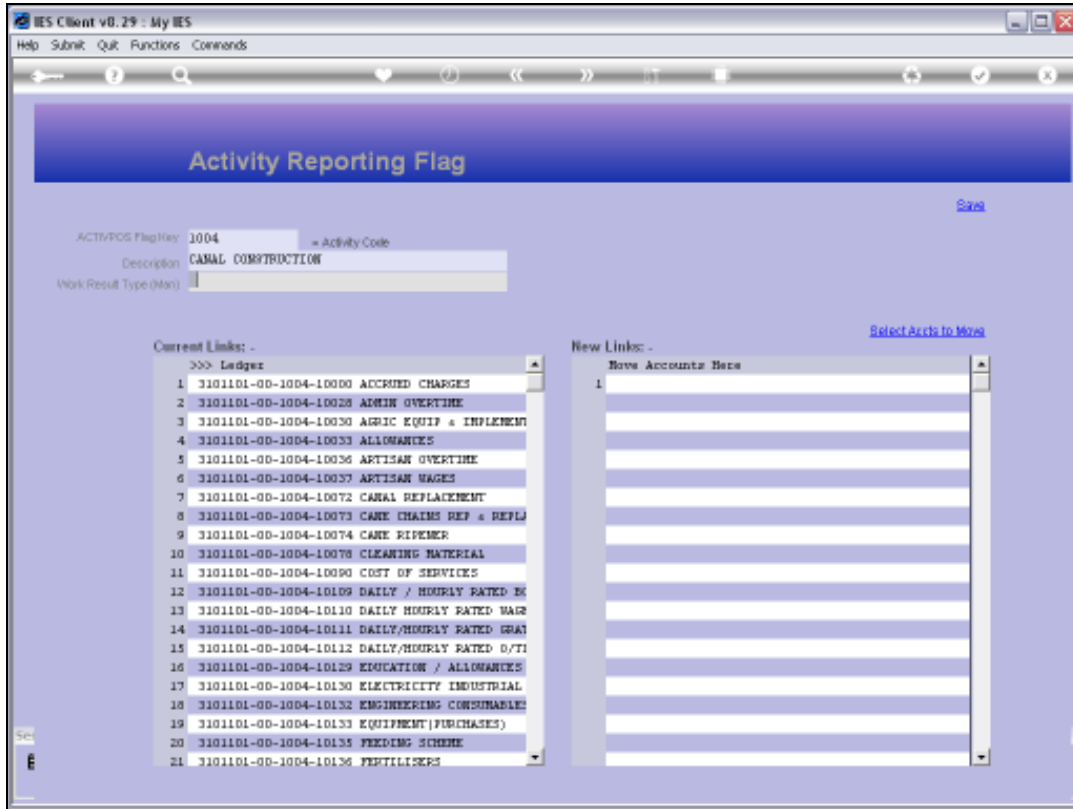


Slide 12
Slide notes:

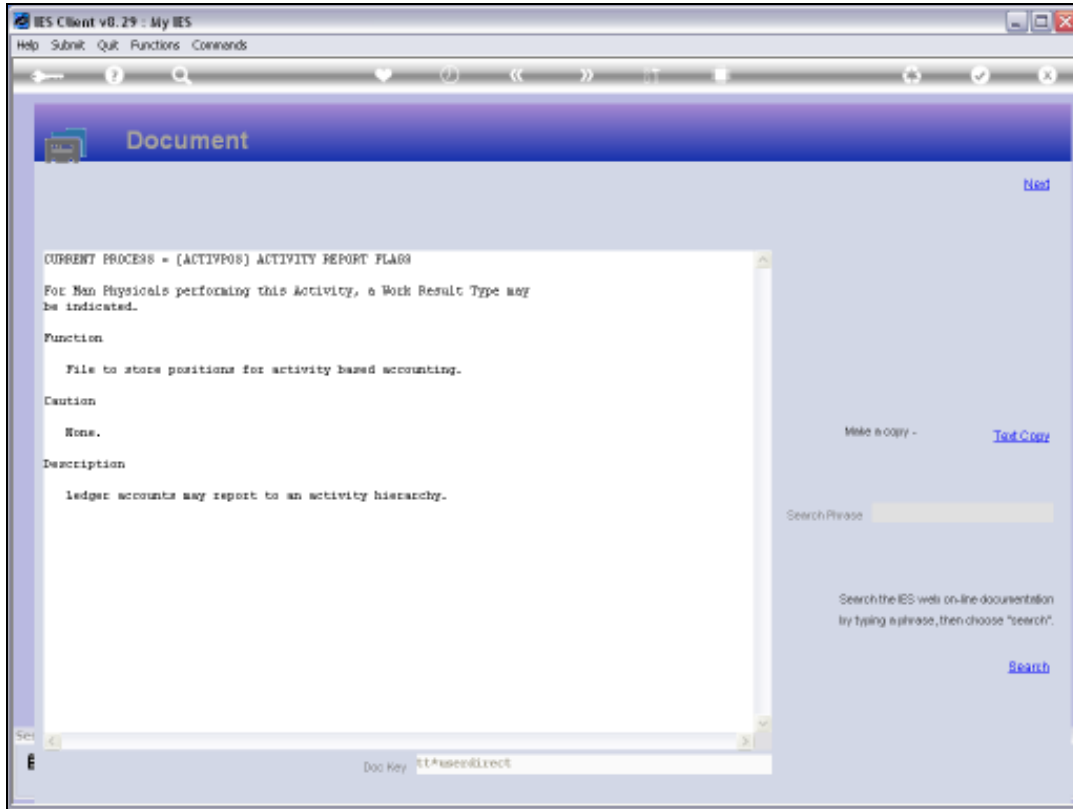


Slide 13

Slide notes: The Work Result type is optional.

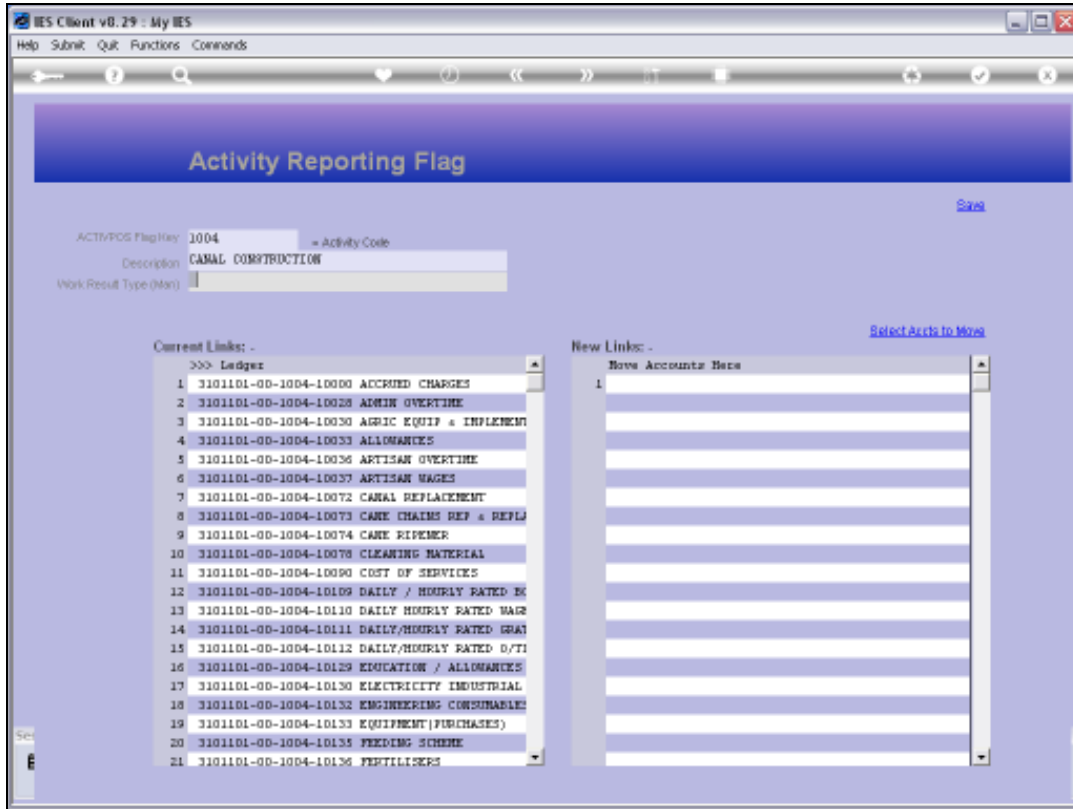


Slide 14
Slide notes:

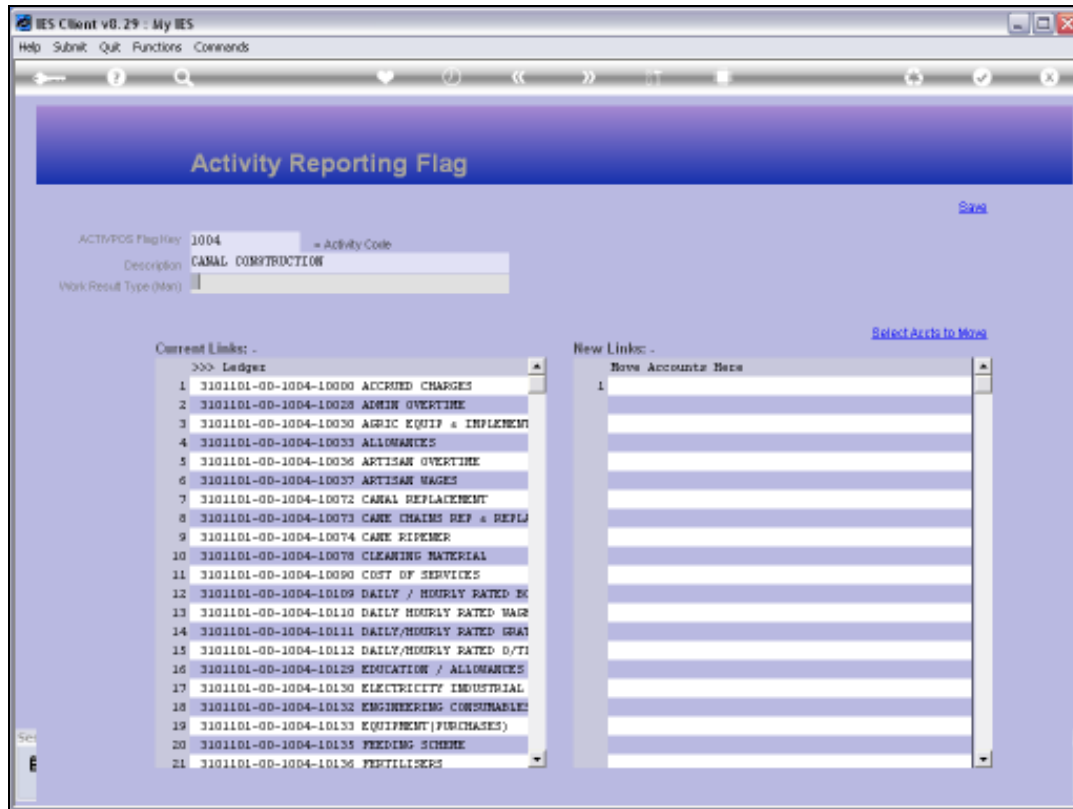


Slide 15

Slide notes: The Help says that the Work Result is useful when the Activity is recorded with Man Physicals.

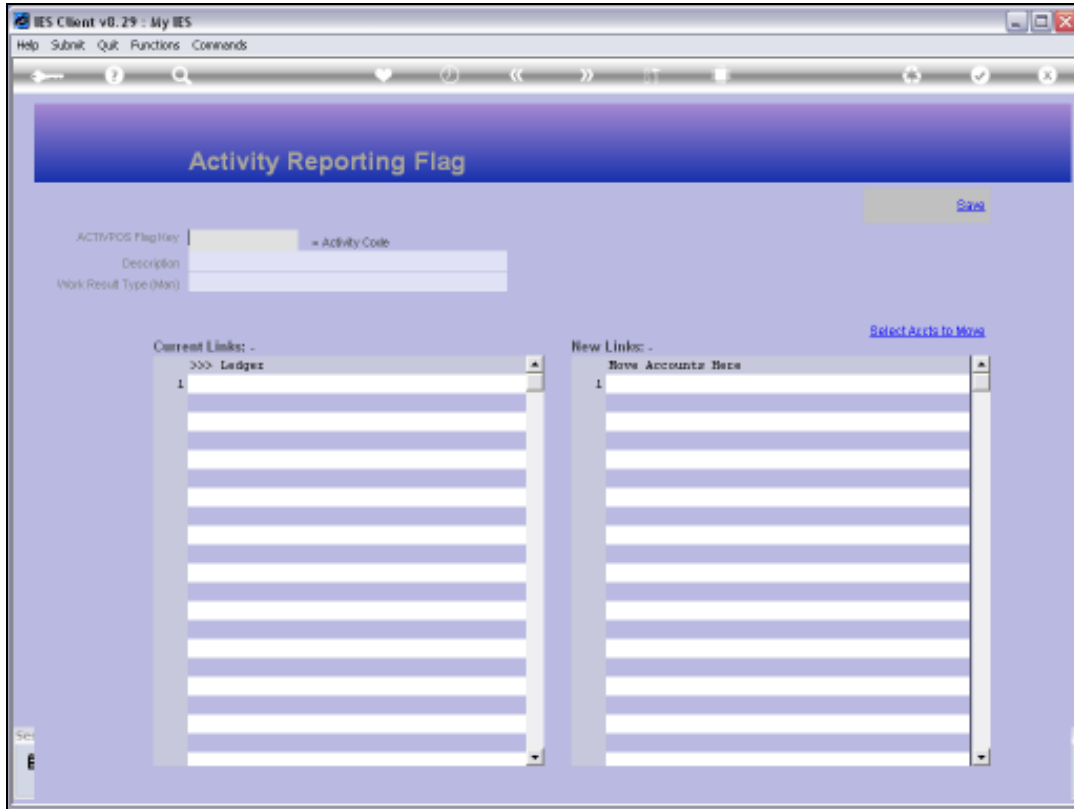


Slide 16
Slide notes:



Slide 17

Slide notes: The GL reporting is super flexible. That's why we can easily create new Report Flags whenever we need them, and why we can easily change and adapt Report Flags on the GL Accounts when and as we need to.



Slide 18

Slide notes: