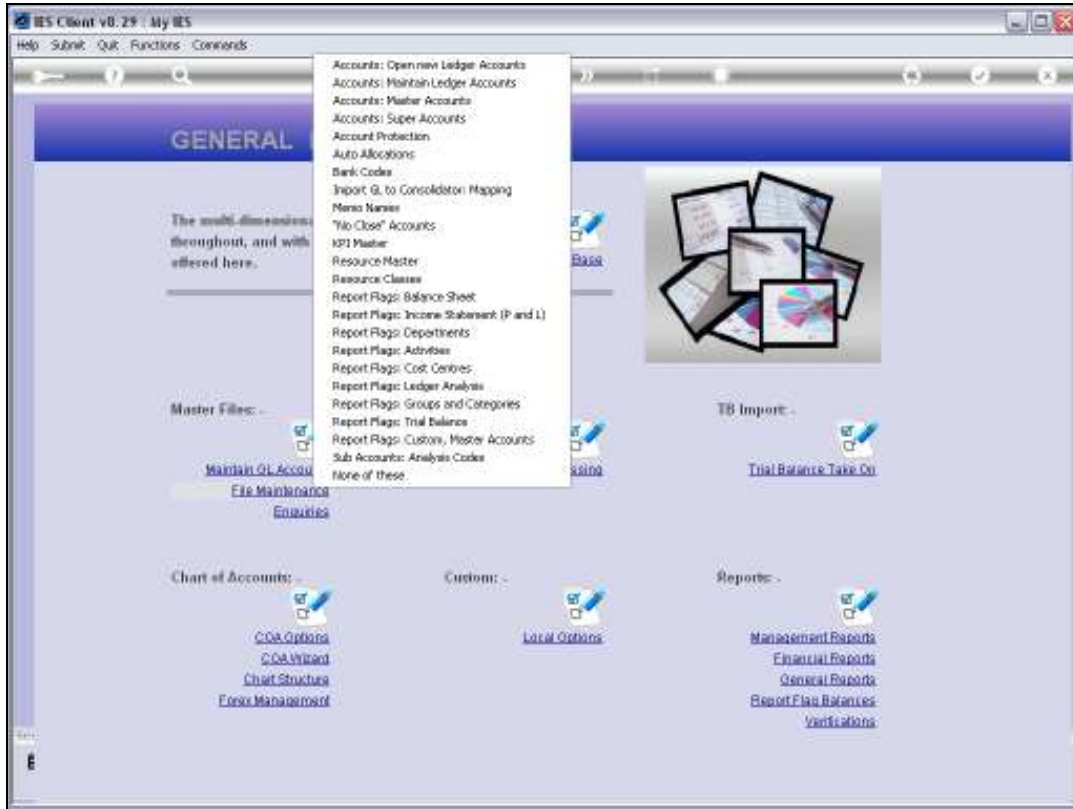


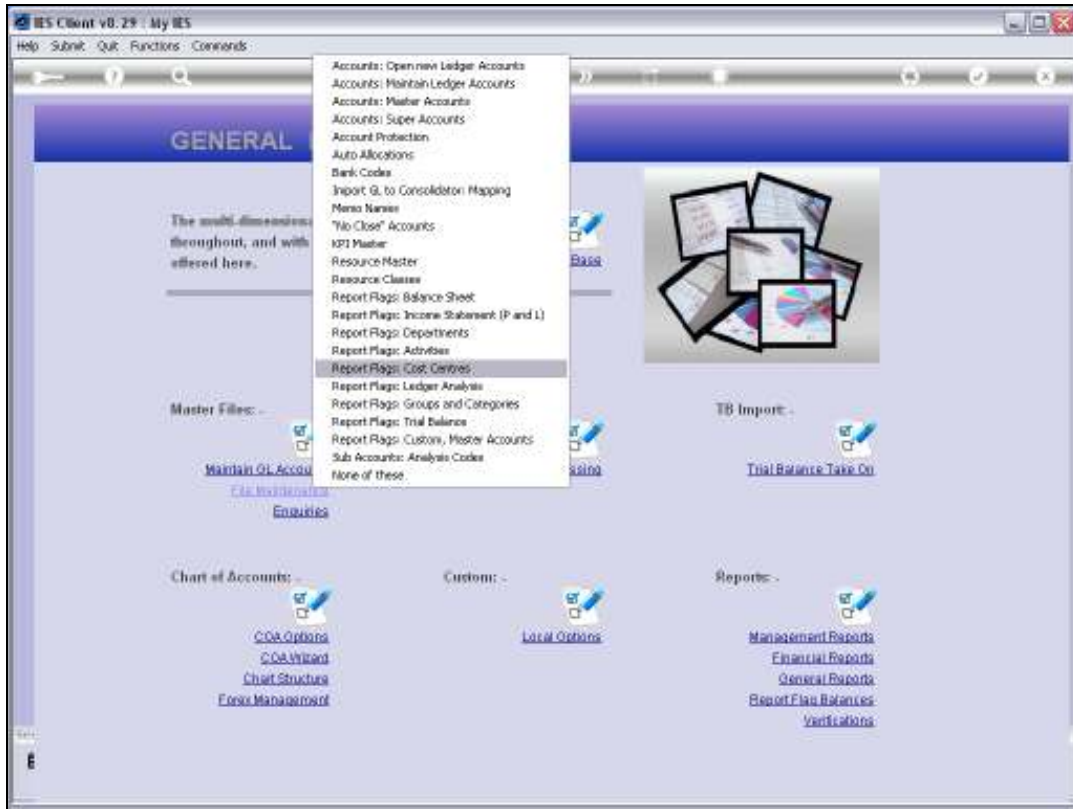


Slide 1

Slide notes: Cost Centre Report Flags can be imported at System Setup, or defined from the Ledger File Maintenance option.



Slide 2
Slide notes:



Slide 3
Slide notes:

IES Client v8.29 : My IES

Help Submit Quit Functions Comments

Cost Centre Reporting Flag

[Save](#)

COSTPOS Flag Key = Cost Centre Code

Description

Current Links: -

>>> Ledges

1

New Links: - [Select Accts](#)

More Accounts Here

1

Limited Activity: - [Select Activities](#)

Limited Activities

1

Balance Sheet Flag

Income State Flag

Trial Balance Flag

Groups / Caty Flag

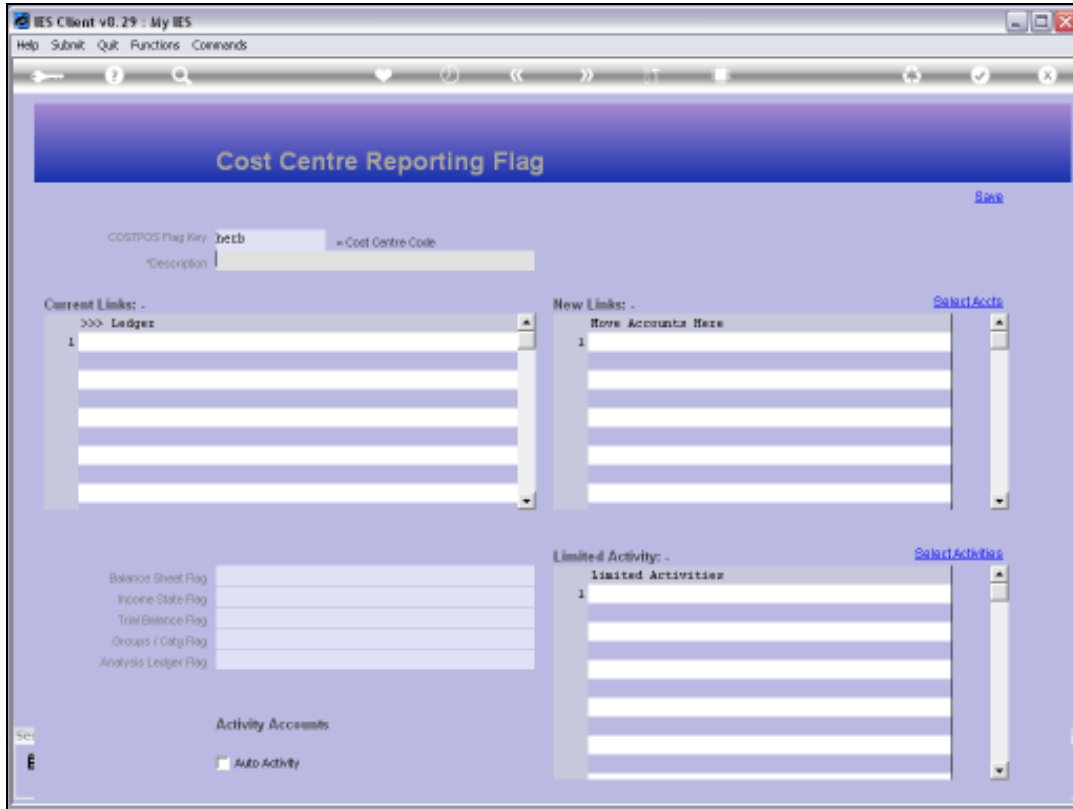
Analysis Ledger Flag

Activity Accounts

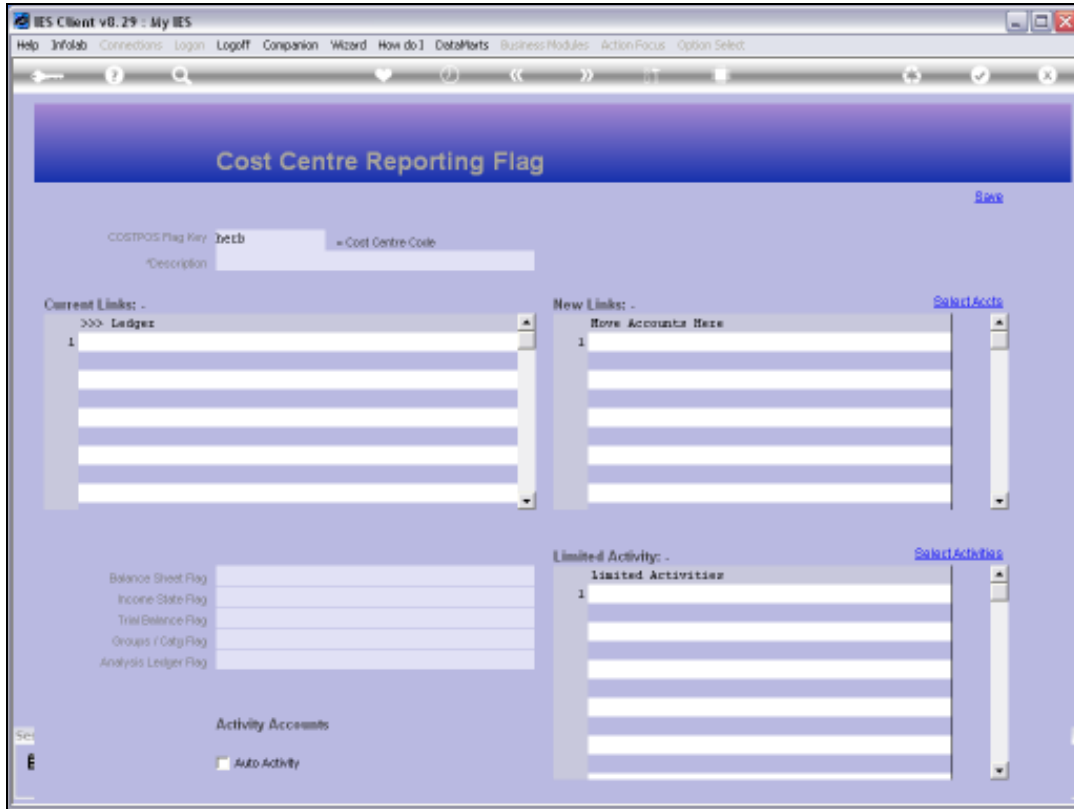
Auto Activity

Slide 4

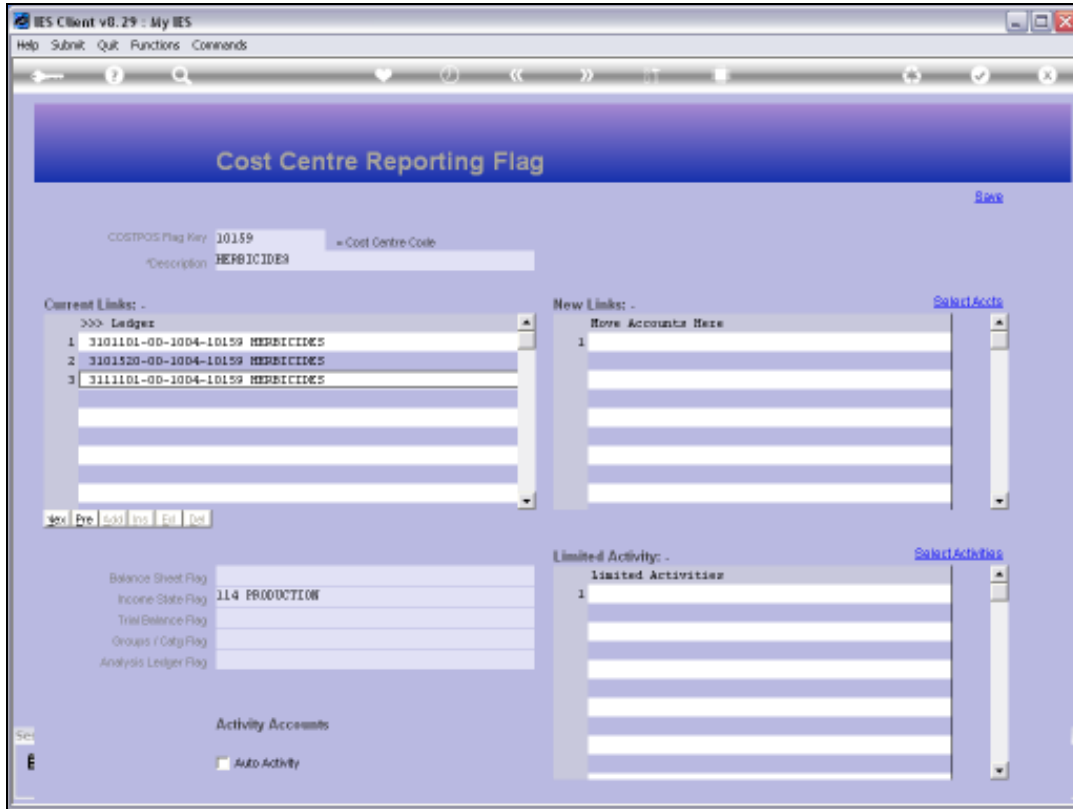
Slide notes: The usual lookups are available for retrieving an existing Flag, or else, to define a new Flag, we may assign a unique short Key and a Name for the Flag.



Slide 5
Slide notes:

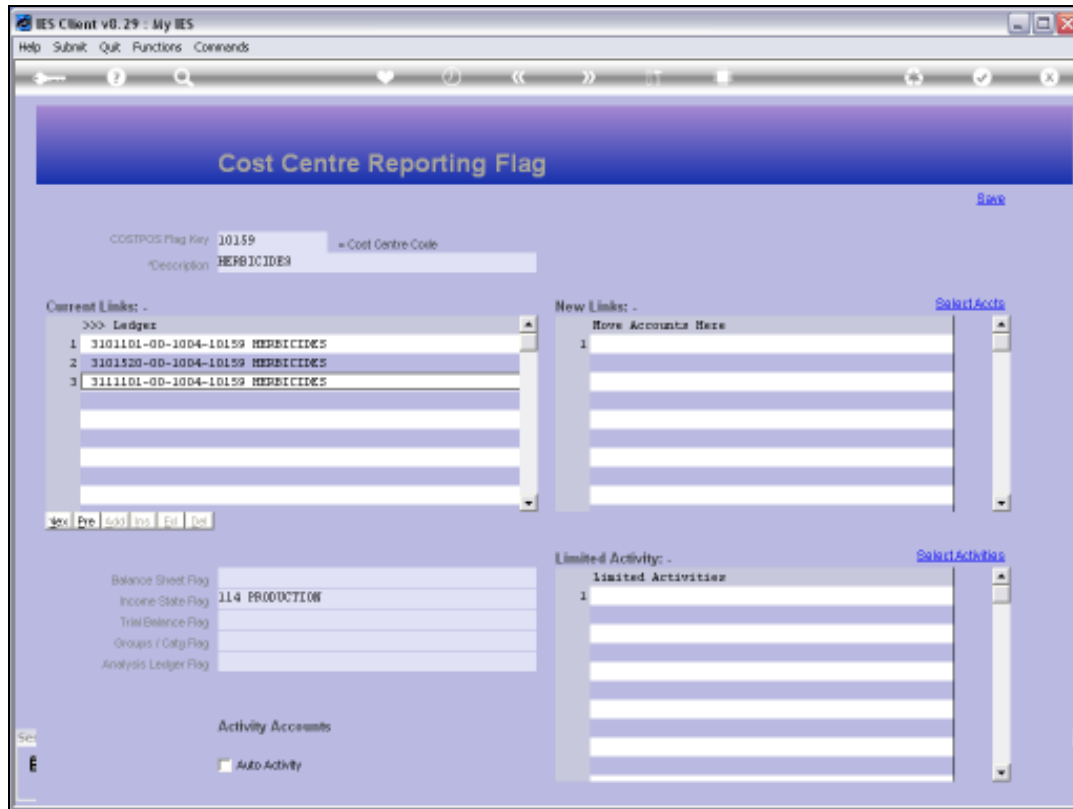


Slide 6
Slide notes:



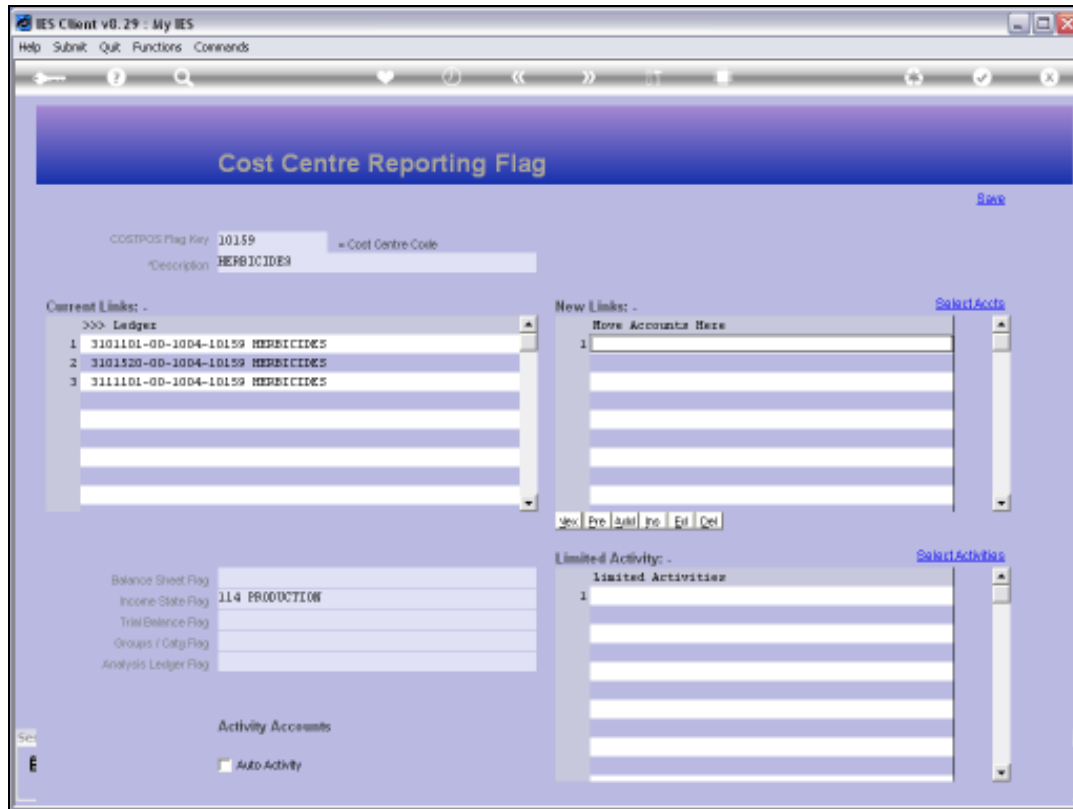
Slide 7

Slide notes: Any GL Accounts that currently use this Flag will be listed at 'Current Links'.



Slide 8

Slide notes: We may use the 'Select Accounts' function to select Accounts that should use this Flag, or we can manually lookup and list them at 'New Links'. When we save the Flag, any Accounts listed at 'New Links' will be updated to use the Flag, and next time we open the same Flag those Accounts will be included at 'Current Links'.



Slide 9

Slide notes: So what is the Cost Centre Report Flag? We use the various types of Report Flags for GL Reporting, for Lookups and for Data Selection. The Flags, when assigned to Accounts, provide us with easy ways to select the Accounts that have a certain Flag, total them on Reports, etc.

IES Client v8.29 : My IES

Help Submit Quit Functions Comments

Cost Centre Reporting Flag

[Save](#)

COSTPOS Flag Key = Cost Centre Code

Description

Current Links: -

>>> Ledges
1

New Links: - [Select Accts](#)

New Accounts Here
1

Balance Sheet Flag

Income State Flag

Trial Balance Flag

Groups / Caty Flag

Analysis Ledger Flag

Limited Activity: - [Select Activities](#)

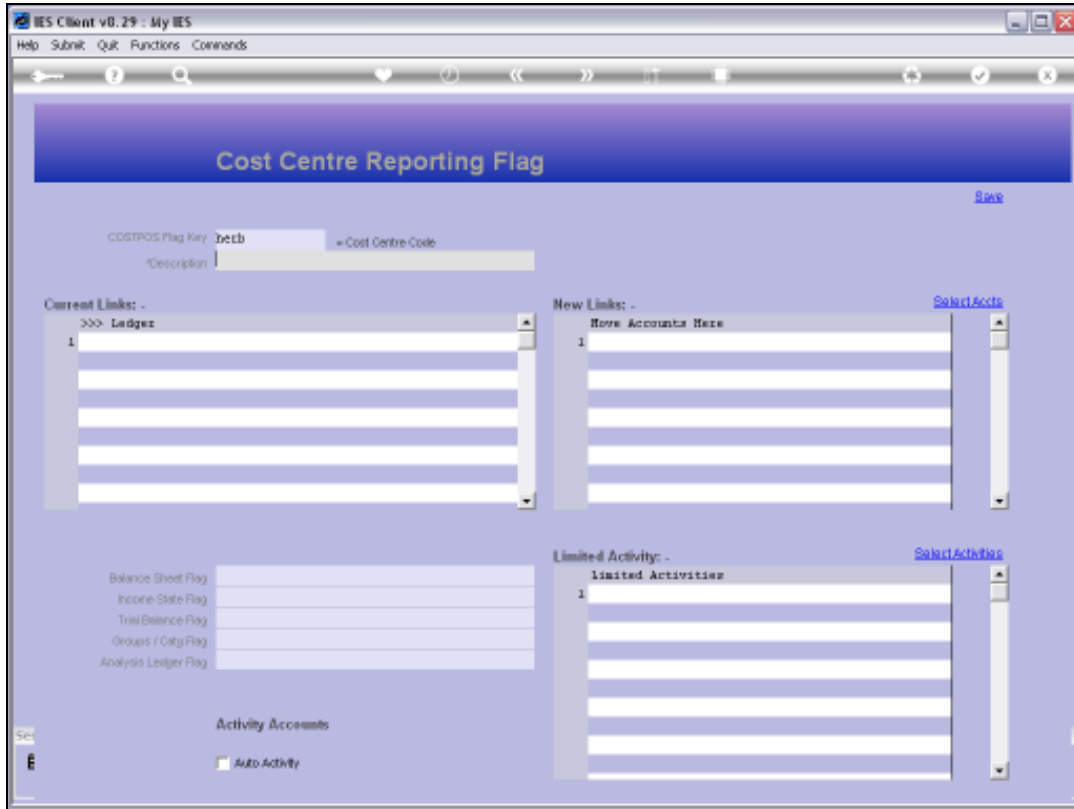
Limited Activities
1

Activity Accounts

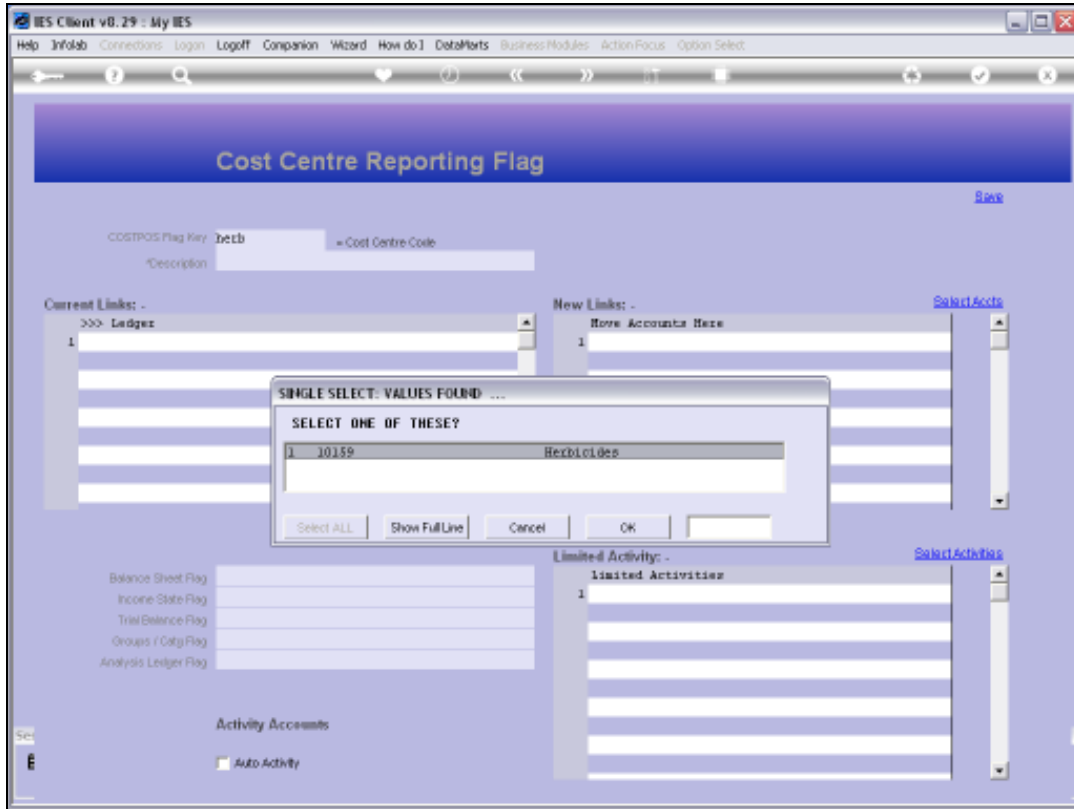
Auto Activity

Slide 10

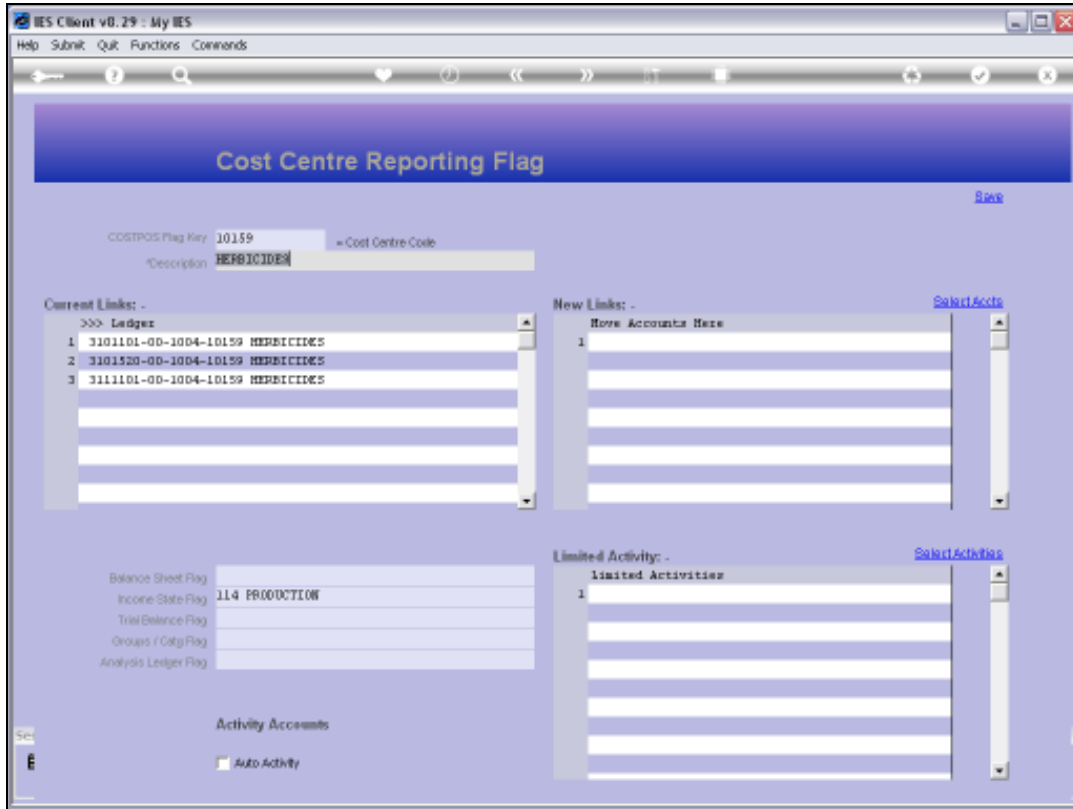
Slide notes: The GL reporting is super flexible. That's why we can easily create new Report Flags whenever we need them, and why we can easily change and adapt Report Flags on the GL Accounts when and as we need to.



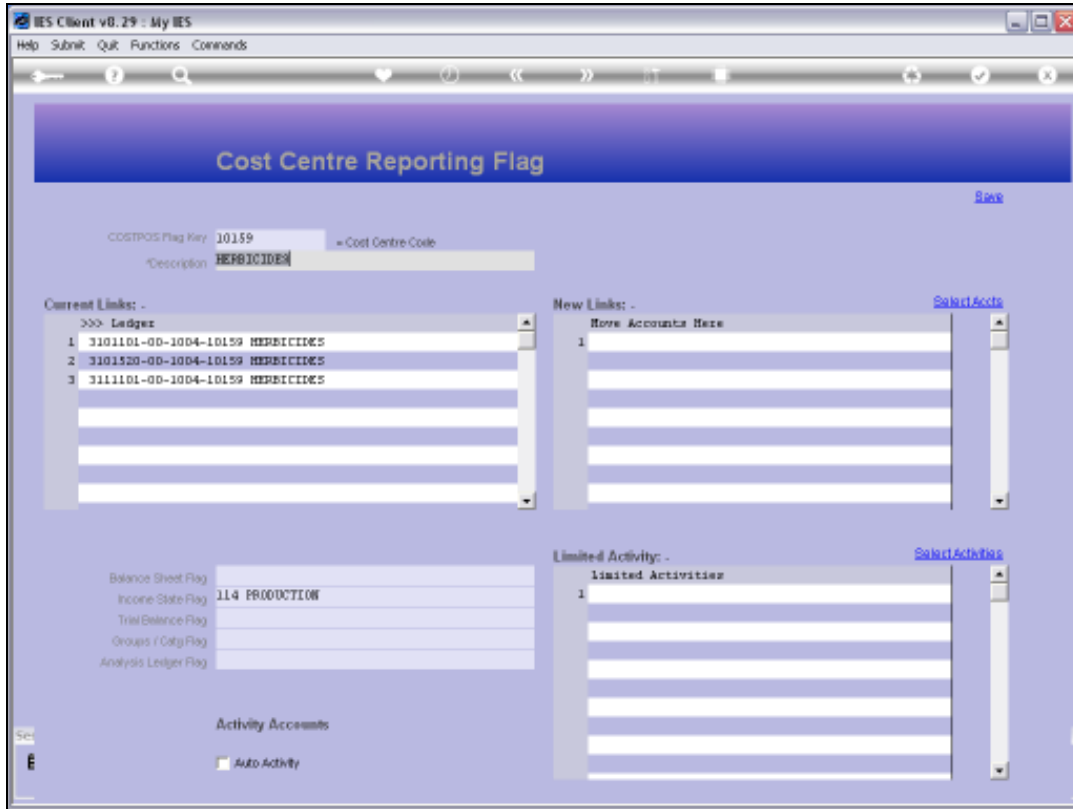
Slide 11
Slide notes:



Slide 12
Slide notes:

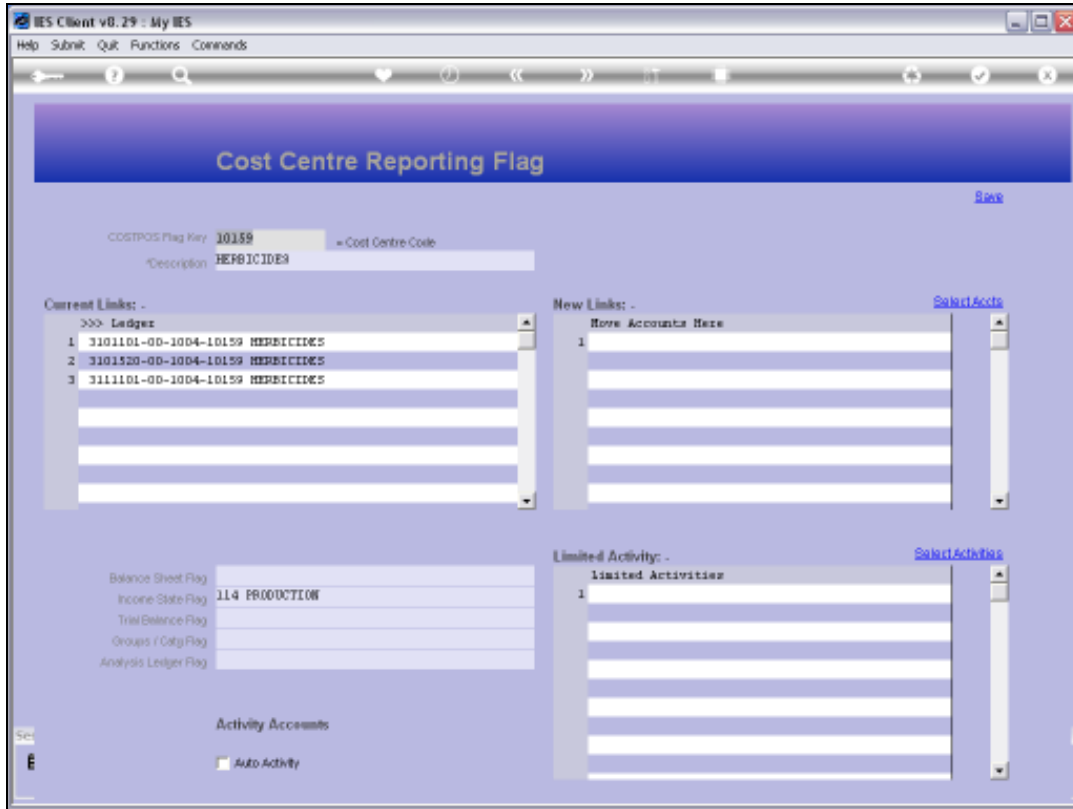


Slide 13
Slide notes:

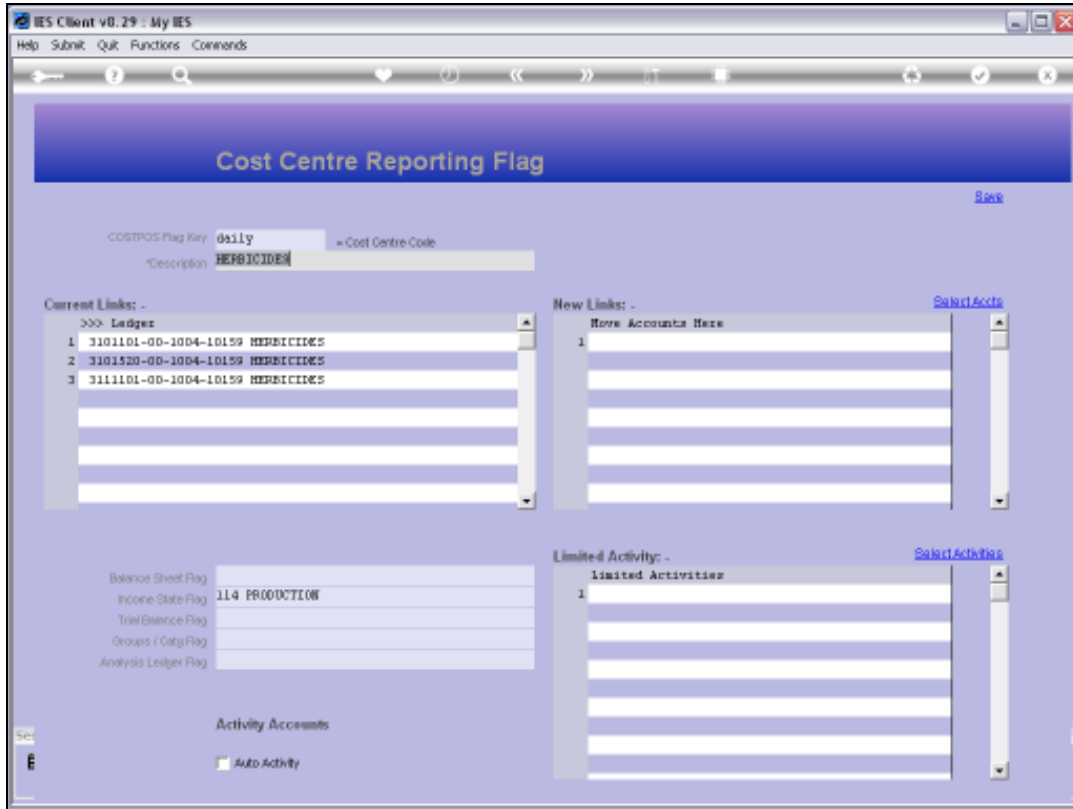


Slide 14

Slide notes: The Cost Centre Report Flag has optional Fields for some other Report Flag Types. On this Flag, we see only 1 of those Fields with a Value.

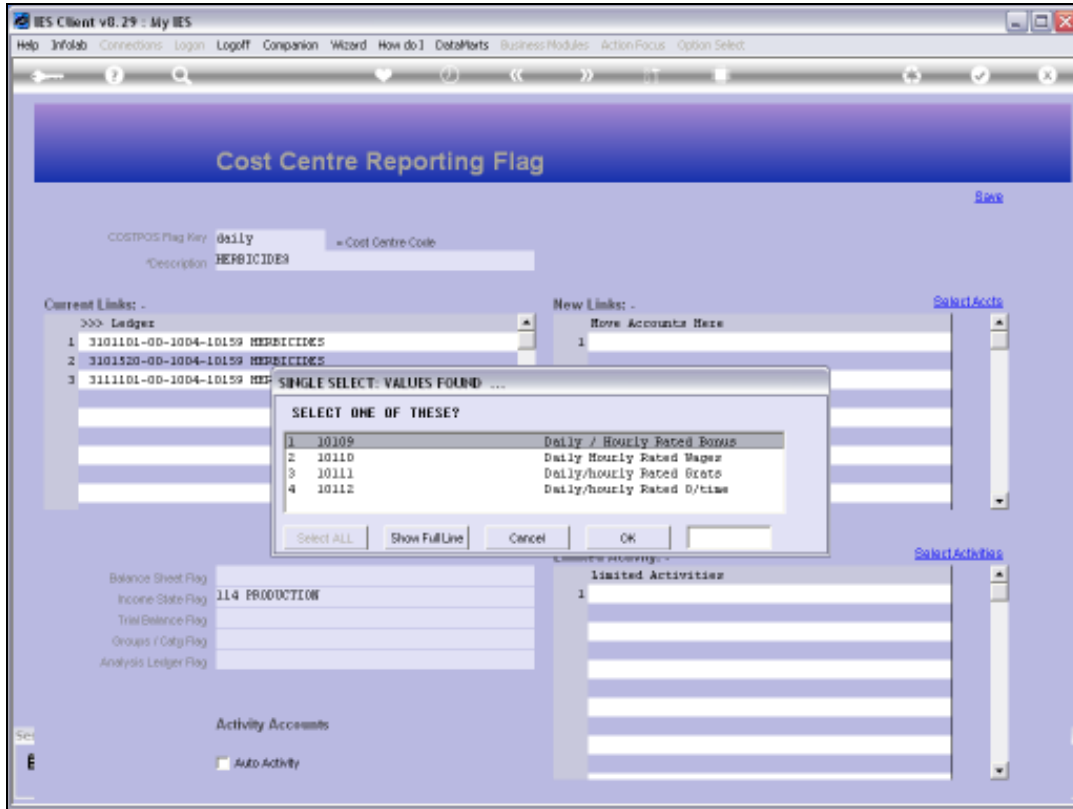


Slide 15
Slide notes:

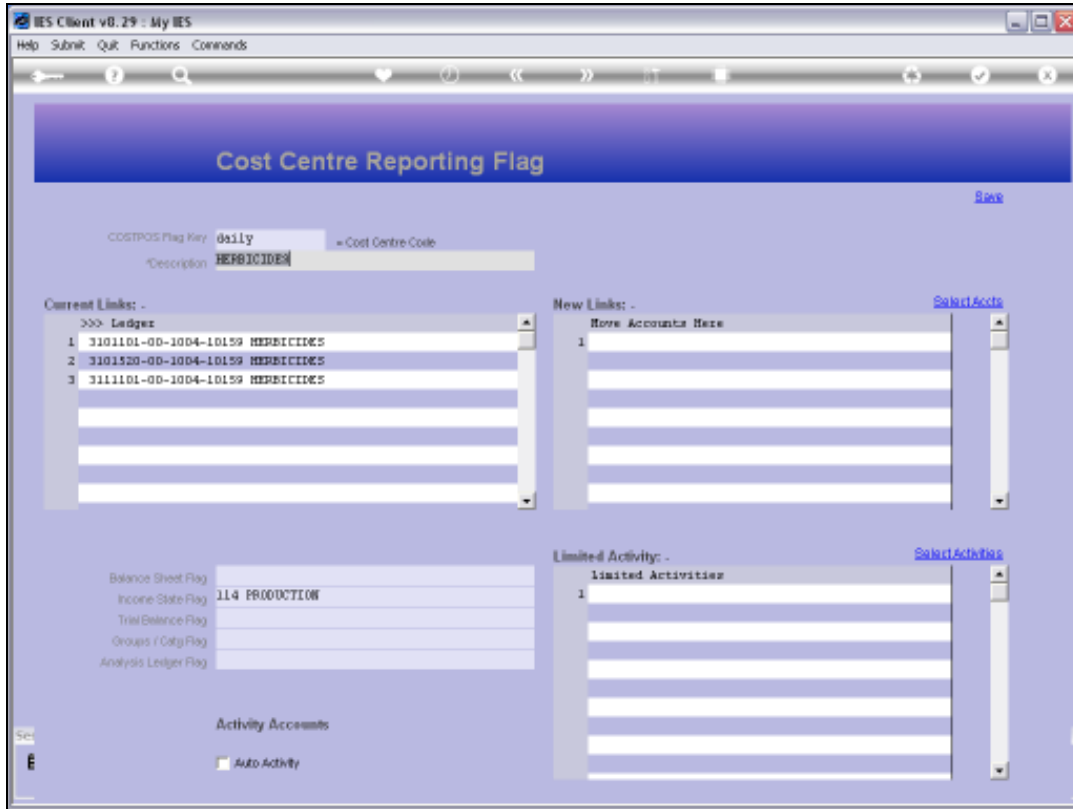


Slide 16

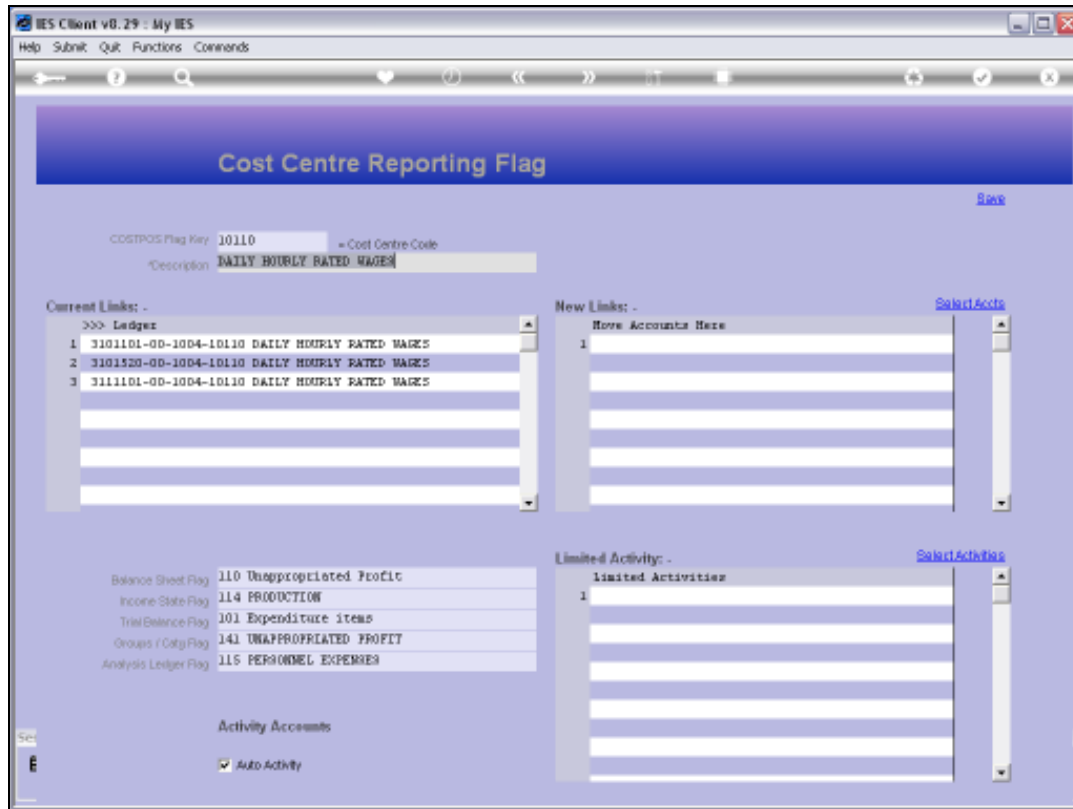
Slide notes:



Slide 17
Slide notes:

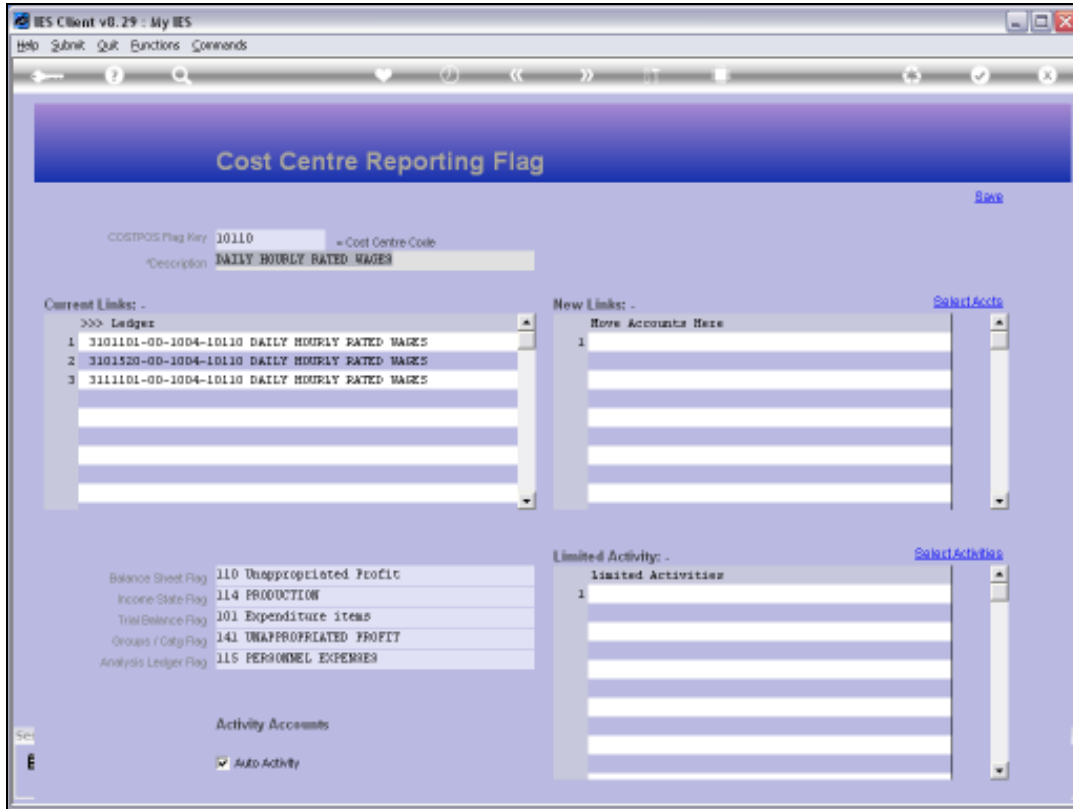


Slide 18
Slide notes:



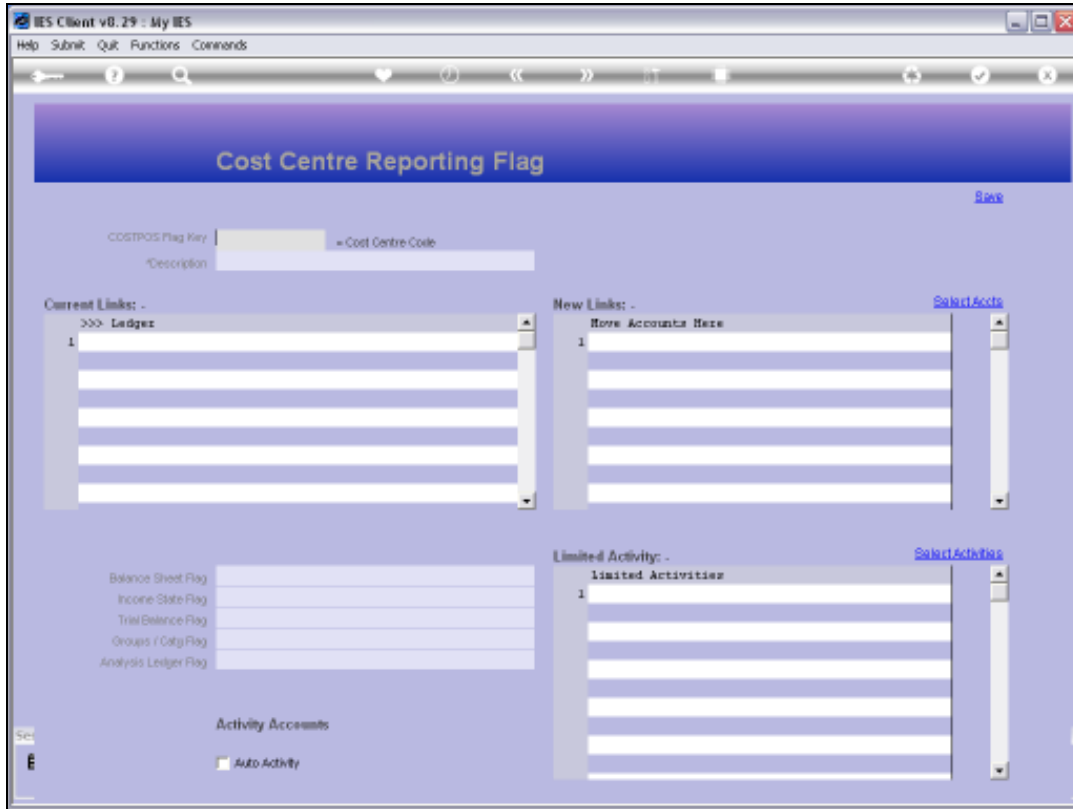
Slide 19

Slide notes: This example has values for all of the other Report Flag fields. The benefit here is that when we open new Accounts, with the Chart wizard or manually, then the new Accounts with this Cost Centre can automatically default the other Report Flags to the Values listed here.

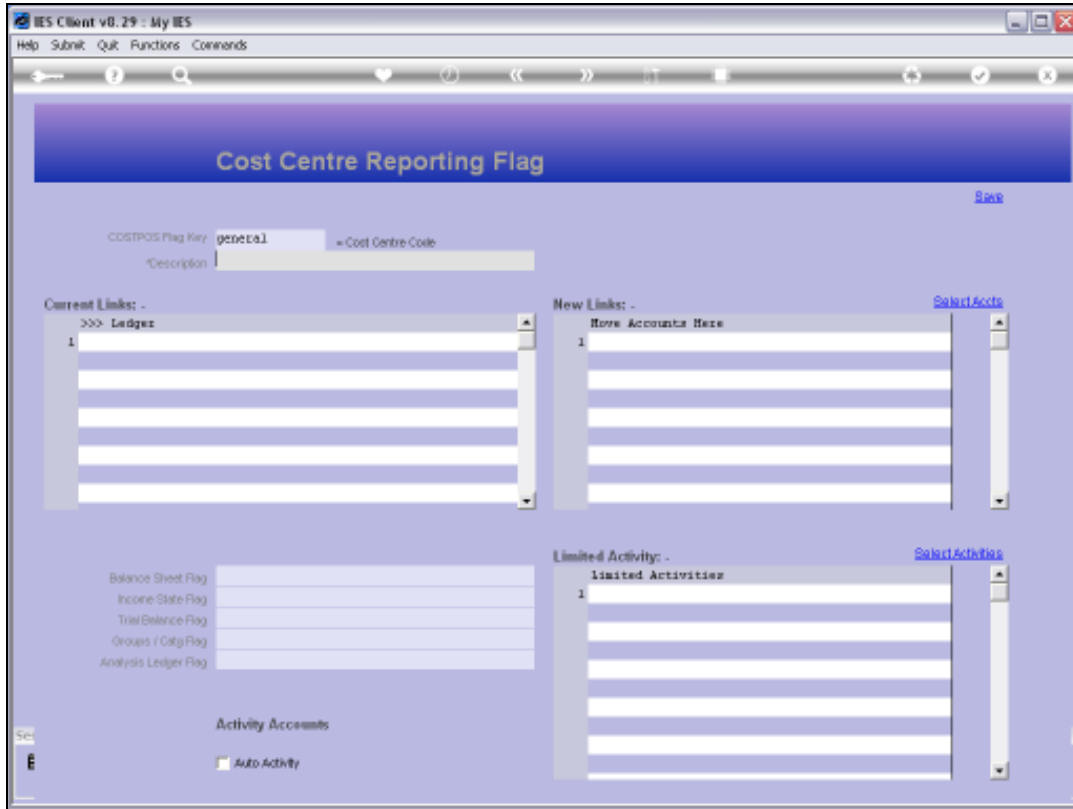


Slide 20

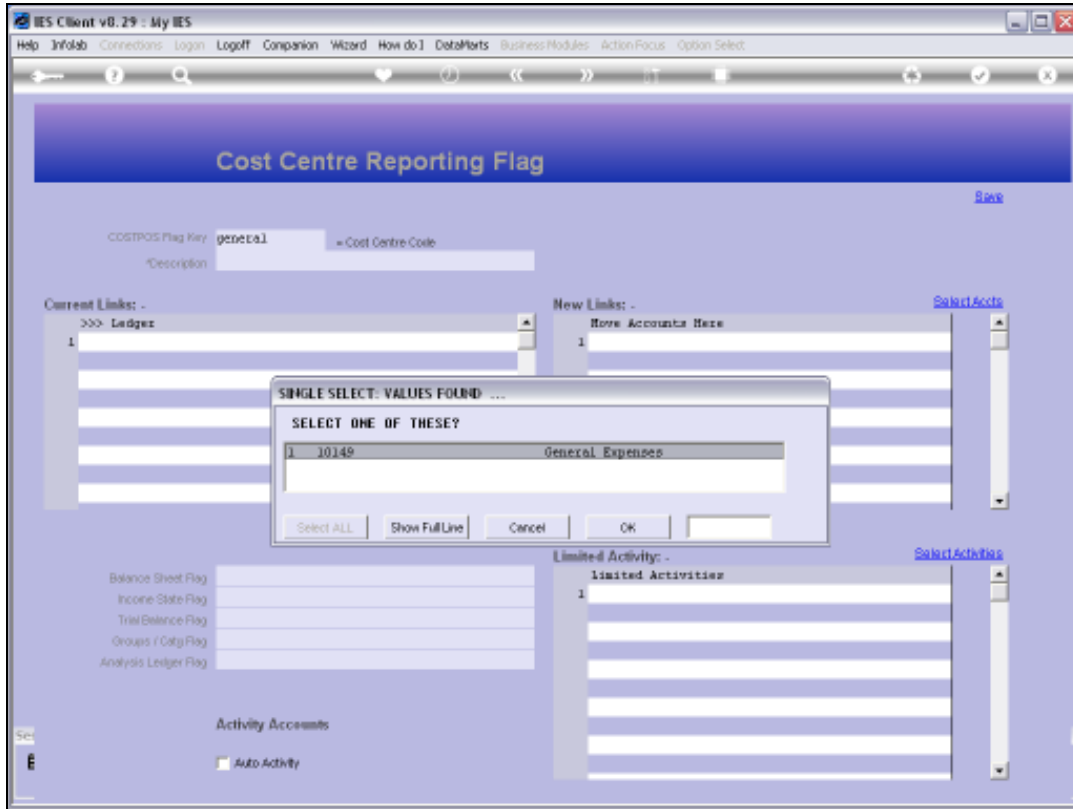
Slide notes:



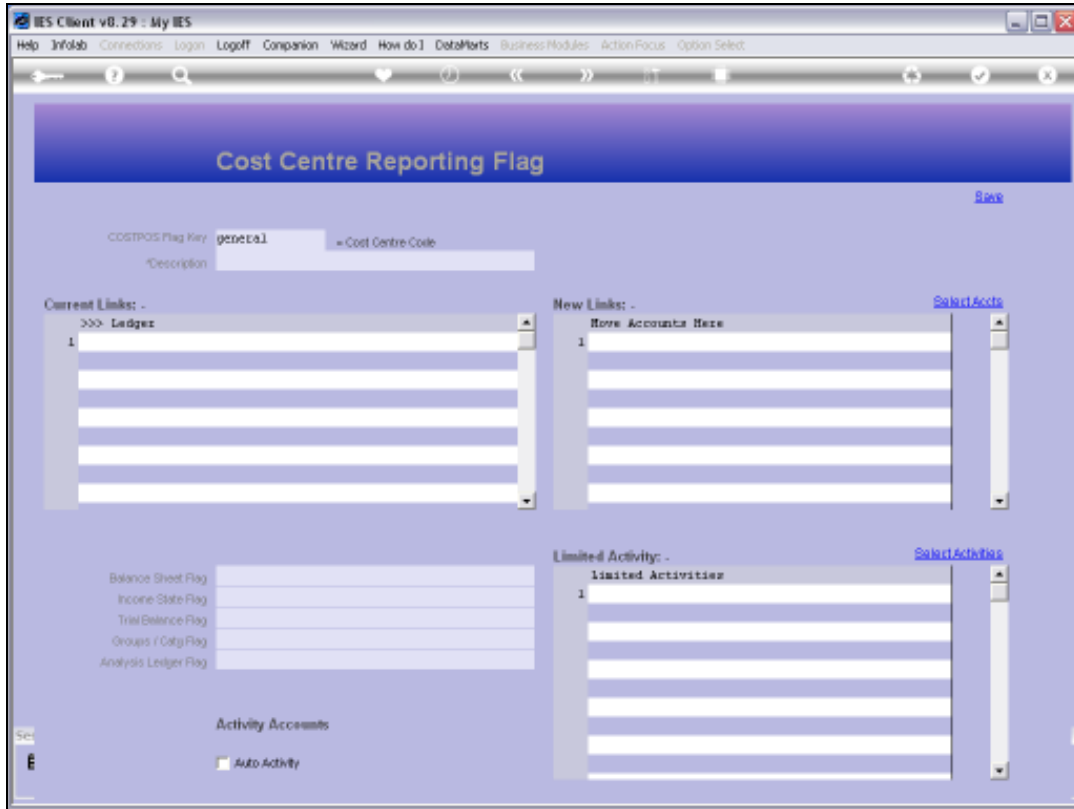
Slide 21
Slide notes:



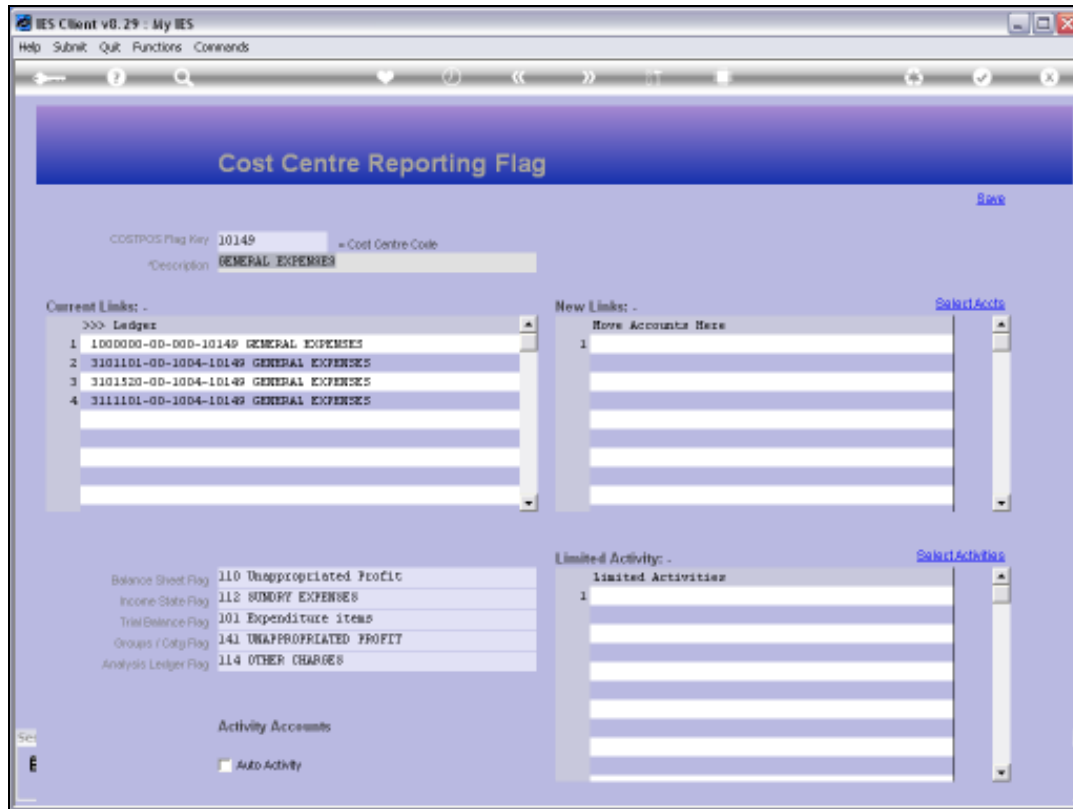
Slide 22
Slide notes:



Slide 23
Slide notes:

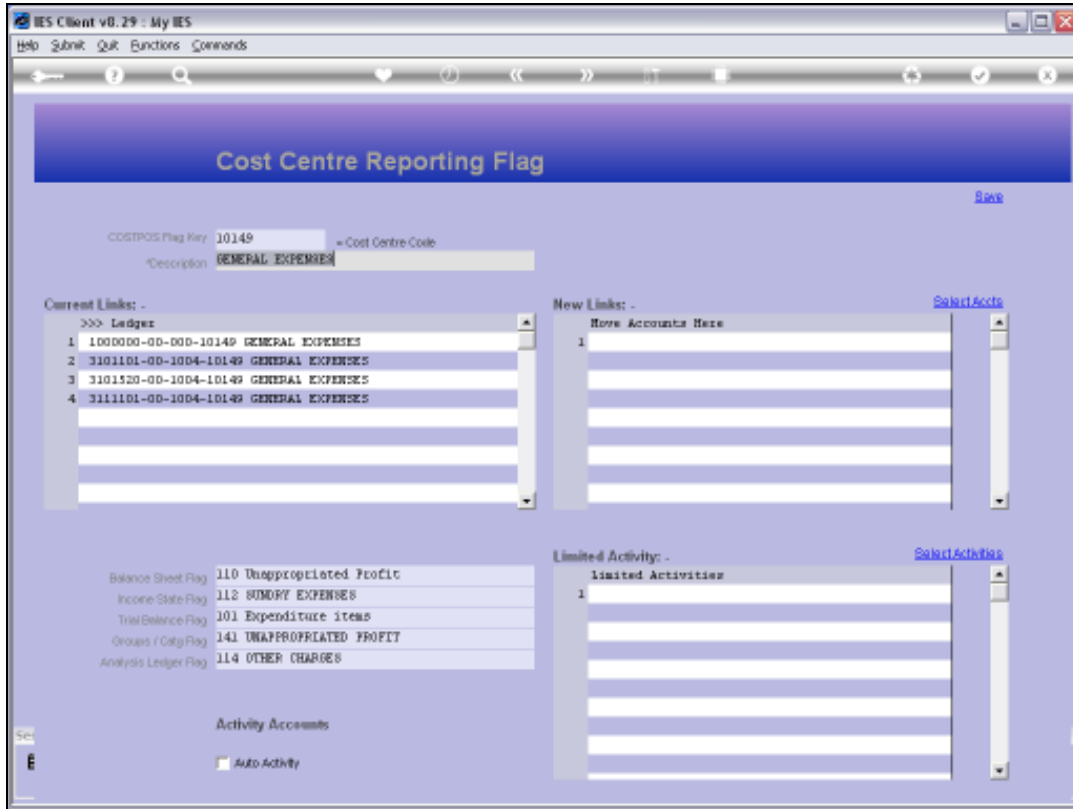


Slide 24
Slide notes:

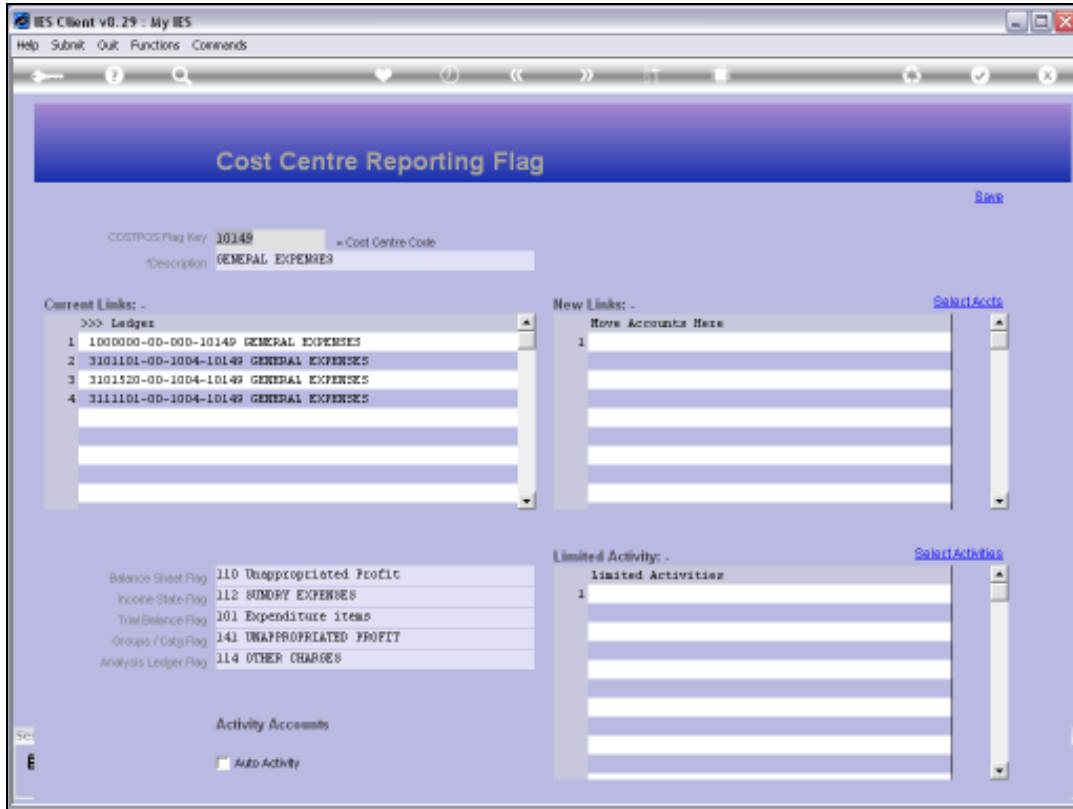


Slide 25

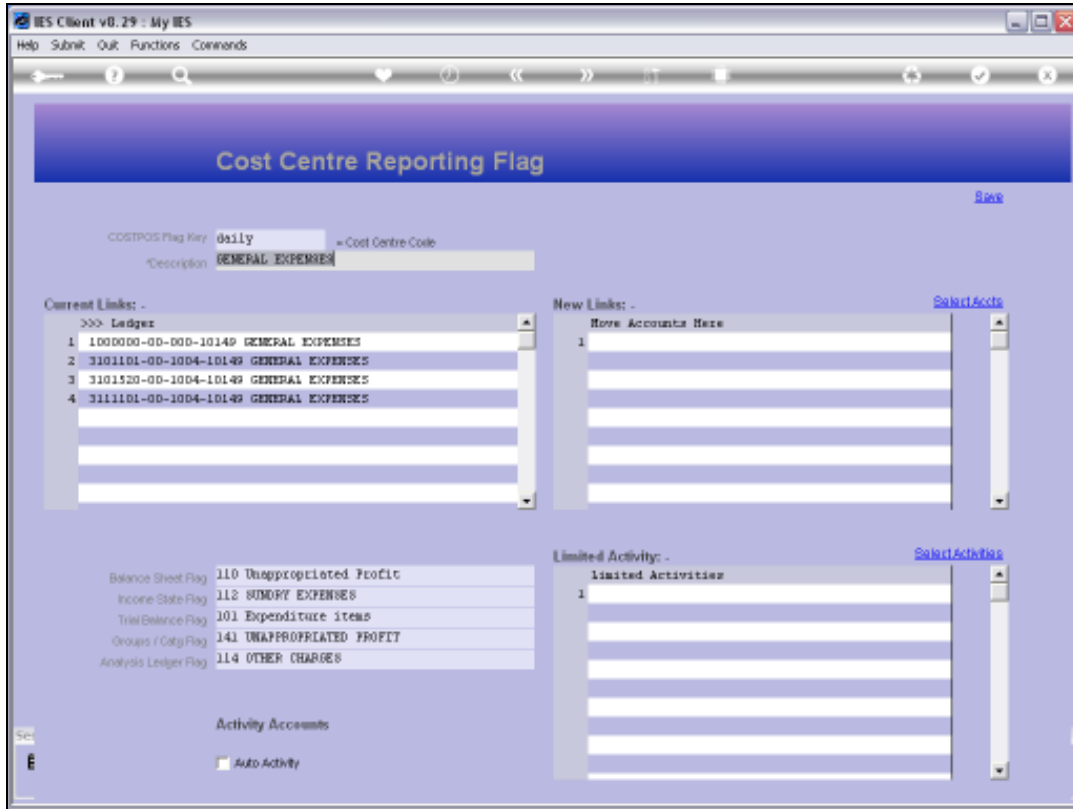
Slide notes: In this example, we do not have 'Auto Activity' checked. Therefore, when Cost Centre Flags are updated to the Chart with the Chart wizard, then Accounts with this Cost Centre will have Auto Activity switched off.



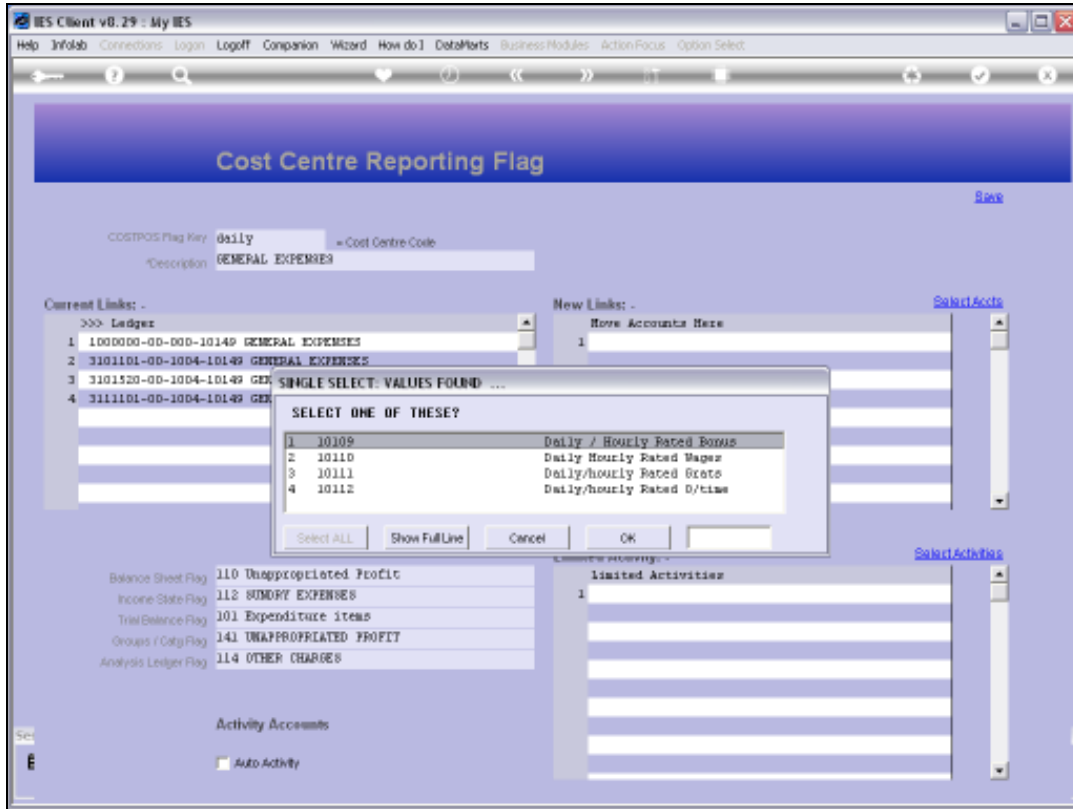
Slide 26
Slide notes:



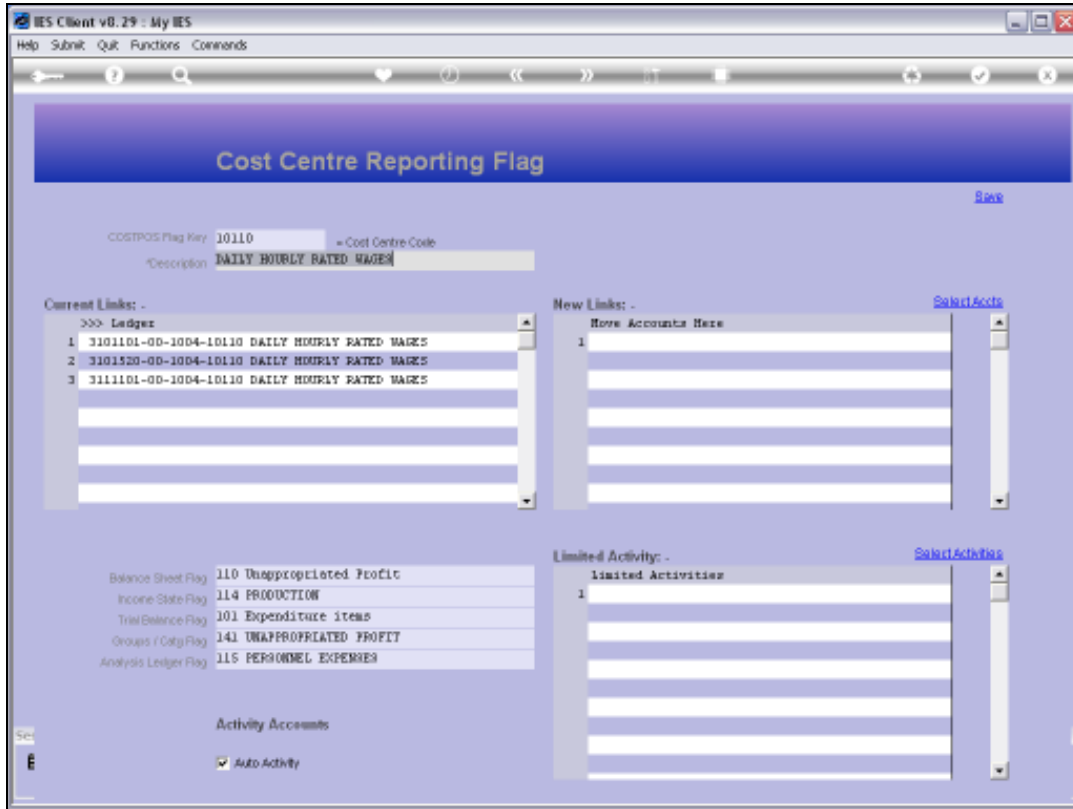
Slide 27
Slide notes:



Slide 28
Slide notes:

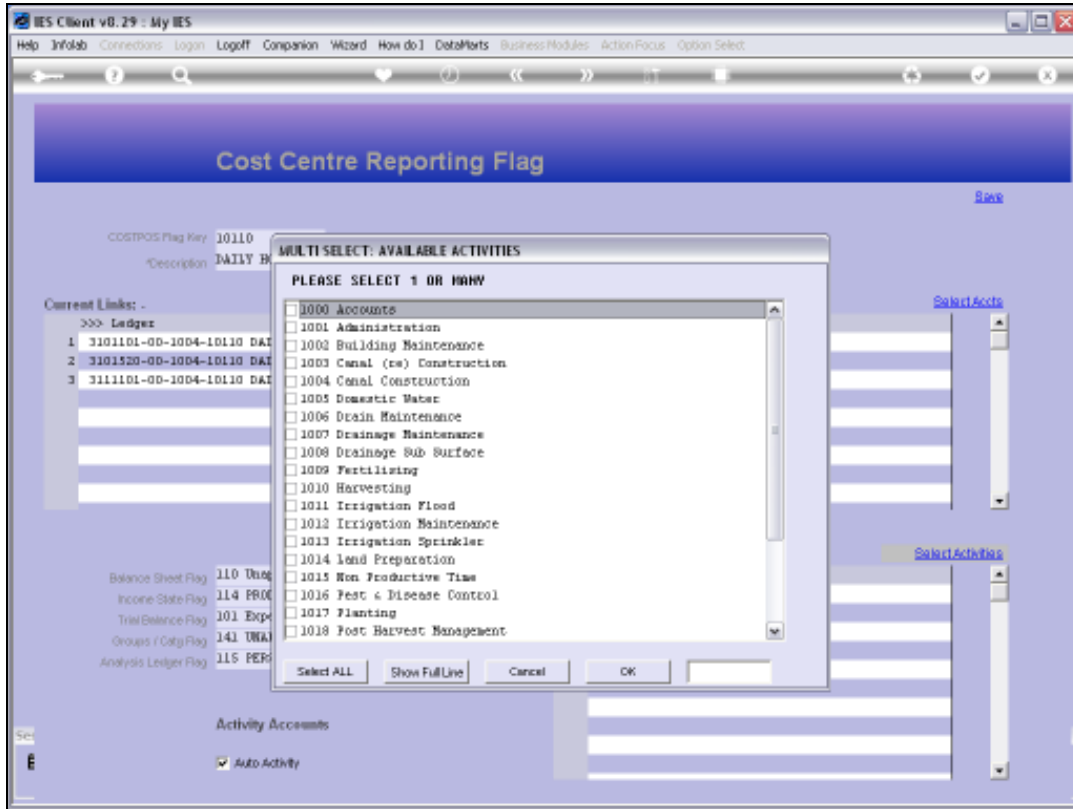


Slide 29
Slide notes:

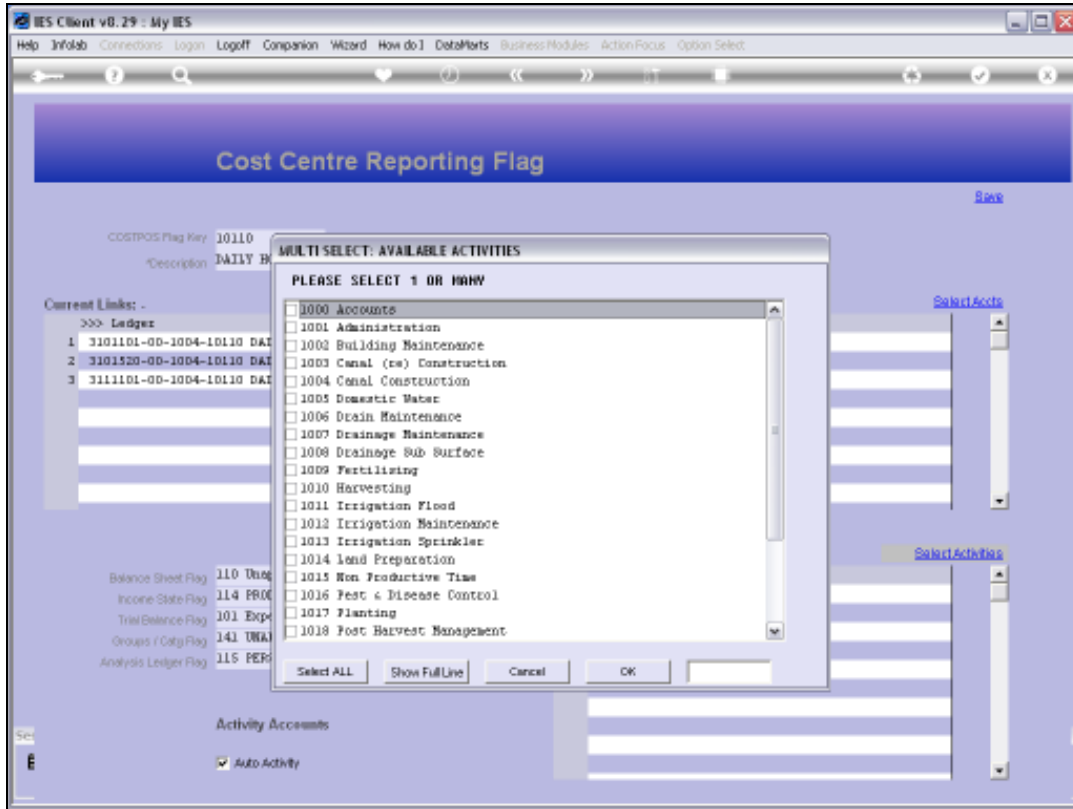


Slide 30

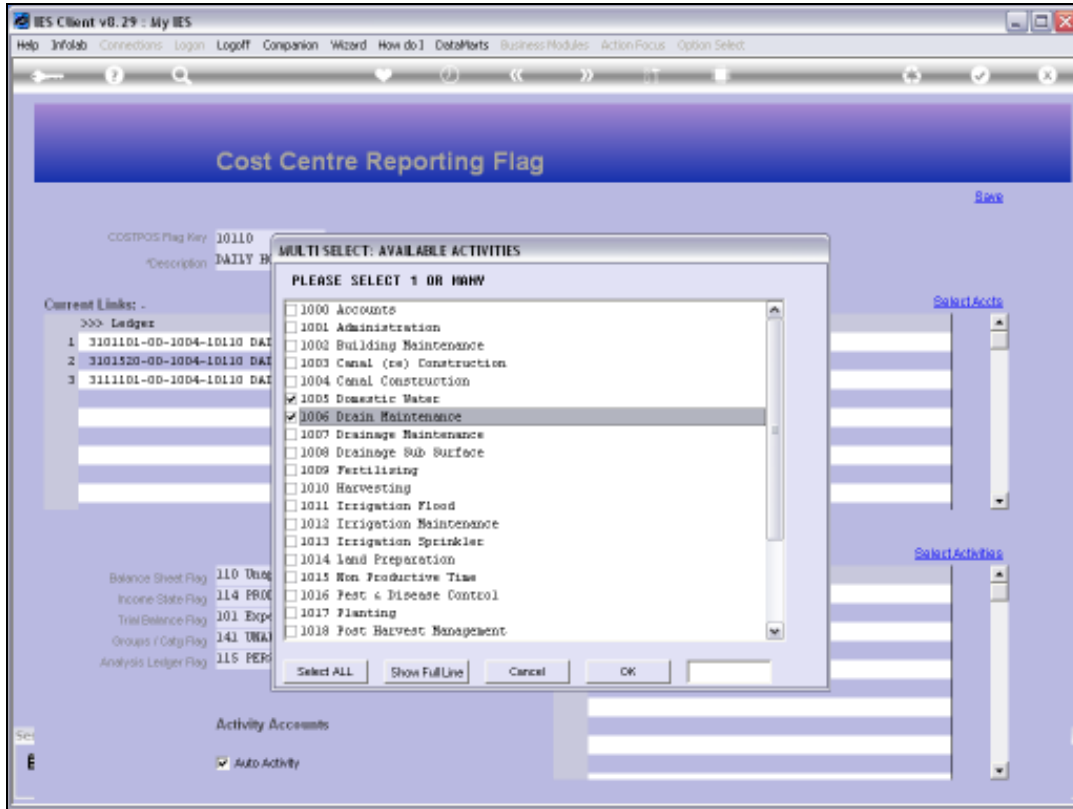
Slide notes: But when Auto Activity is on, as with this example, then it means that Accounts with this Cost Centre will allow Auto Activity Accounts to be opened automatically by the system, and on demand. When Auto Activity is switched on, we can also limit the Activities to only a selected series. In other words, if we list any Activities at 'Limited Activity', then only those Activities qualify for Auto Activity.



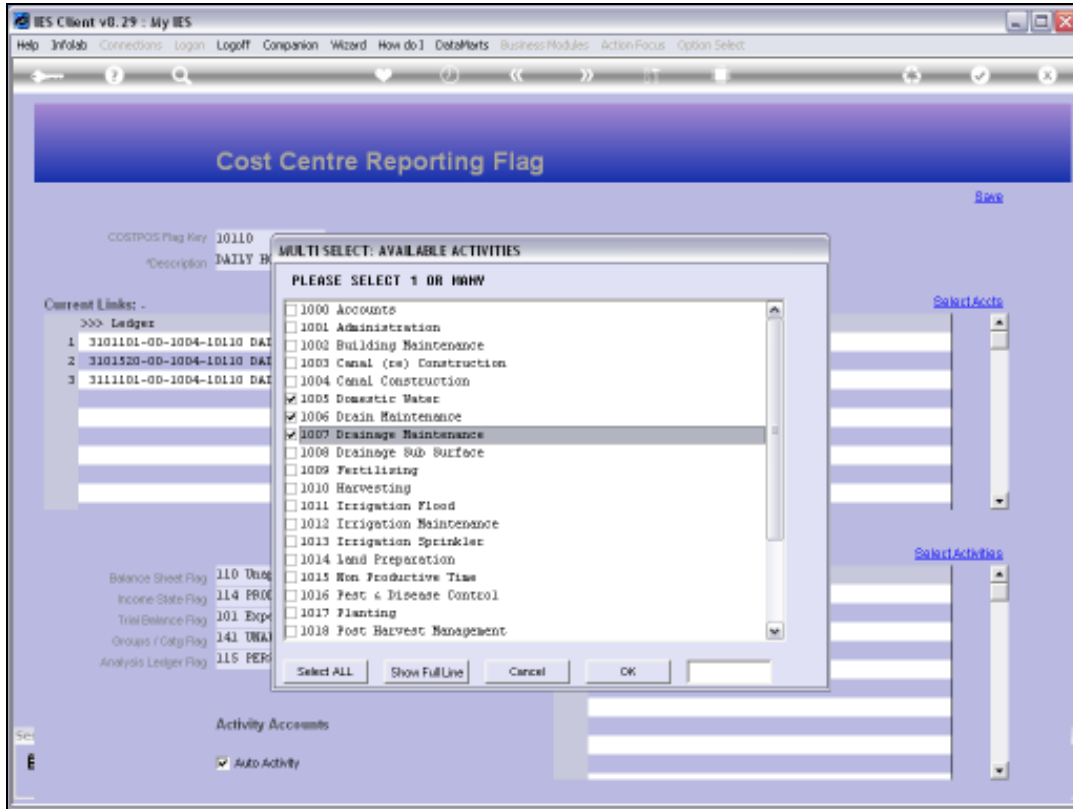
Slide 31
Slide notes:



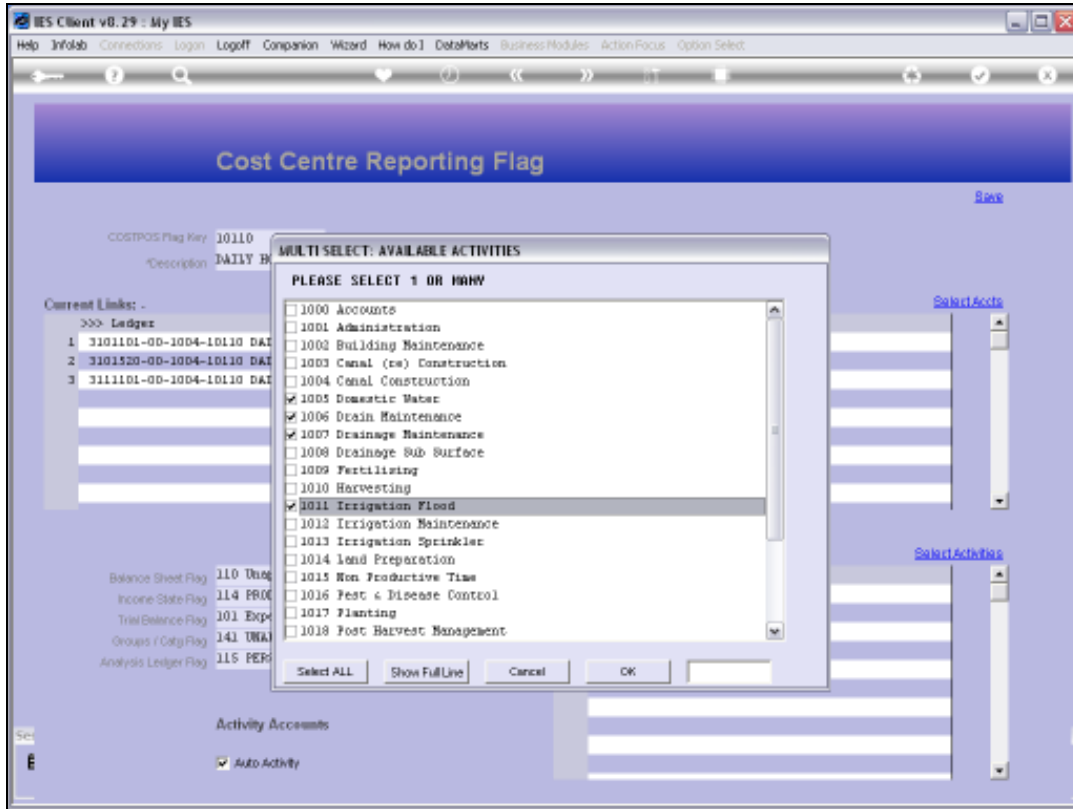
Slide 32
Slide notes:



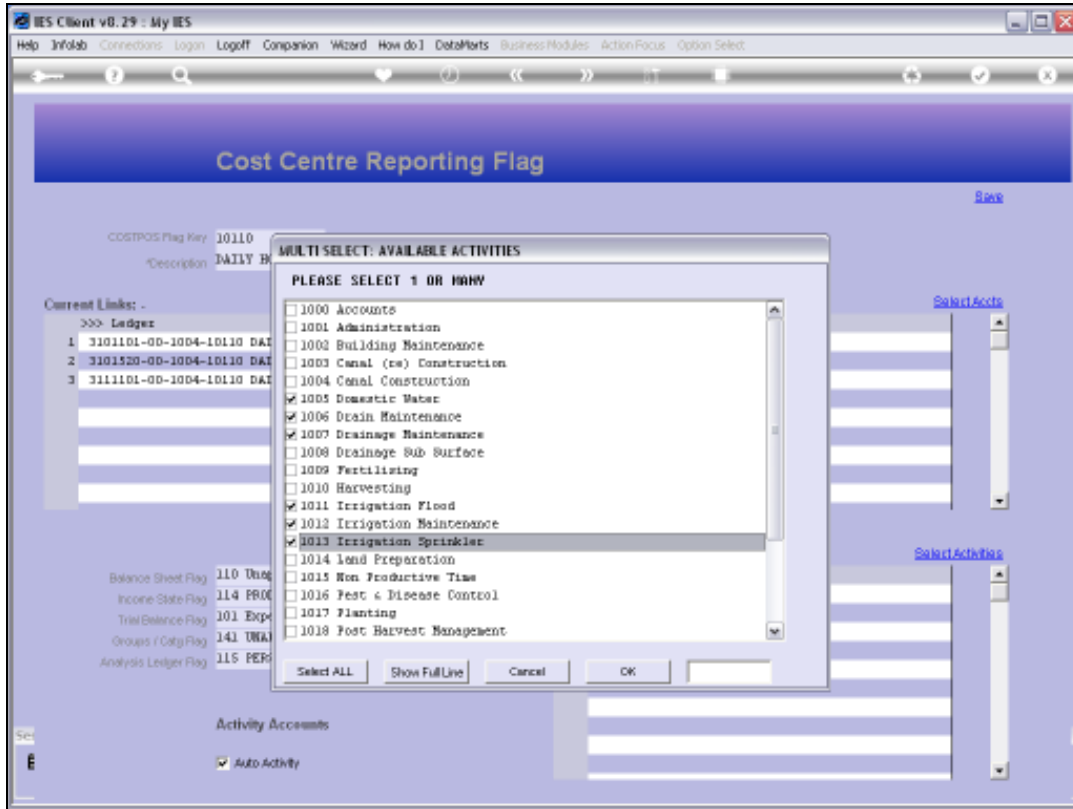
Slide 33
Slide notes:



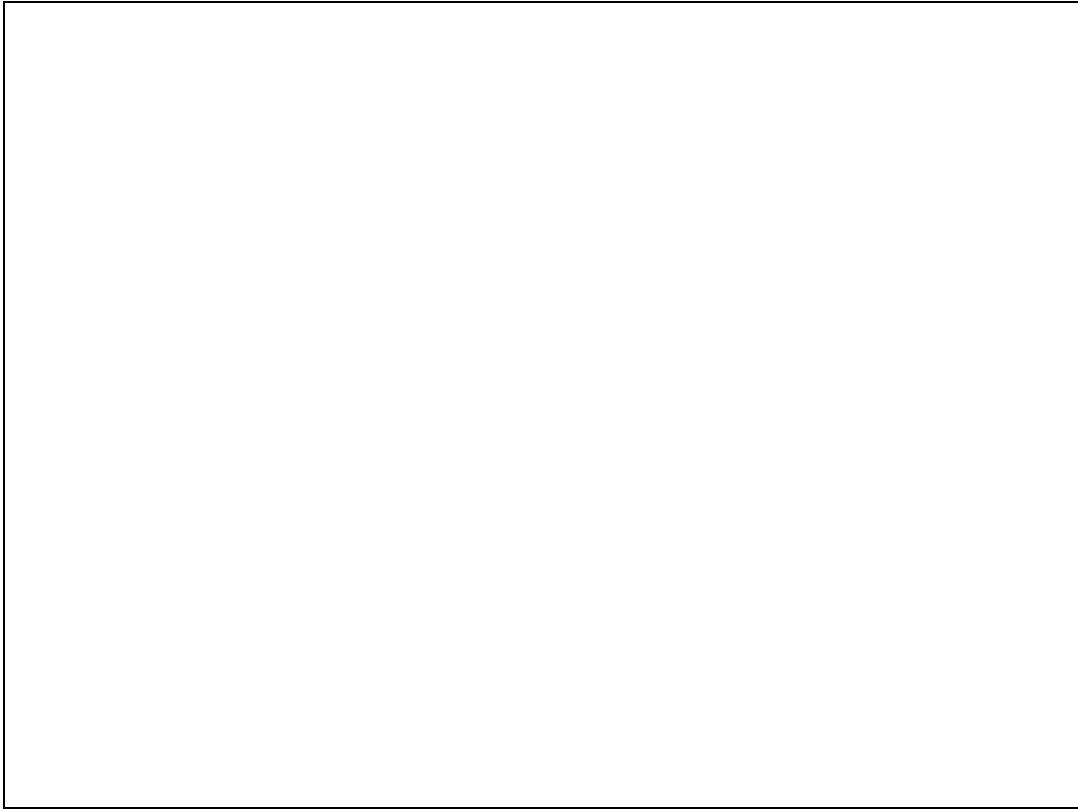
Slide 34
Slide notes:



Slide 35
Slide notes:

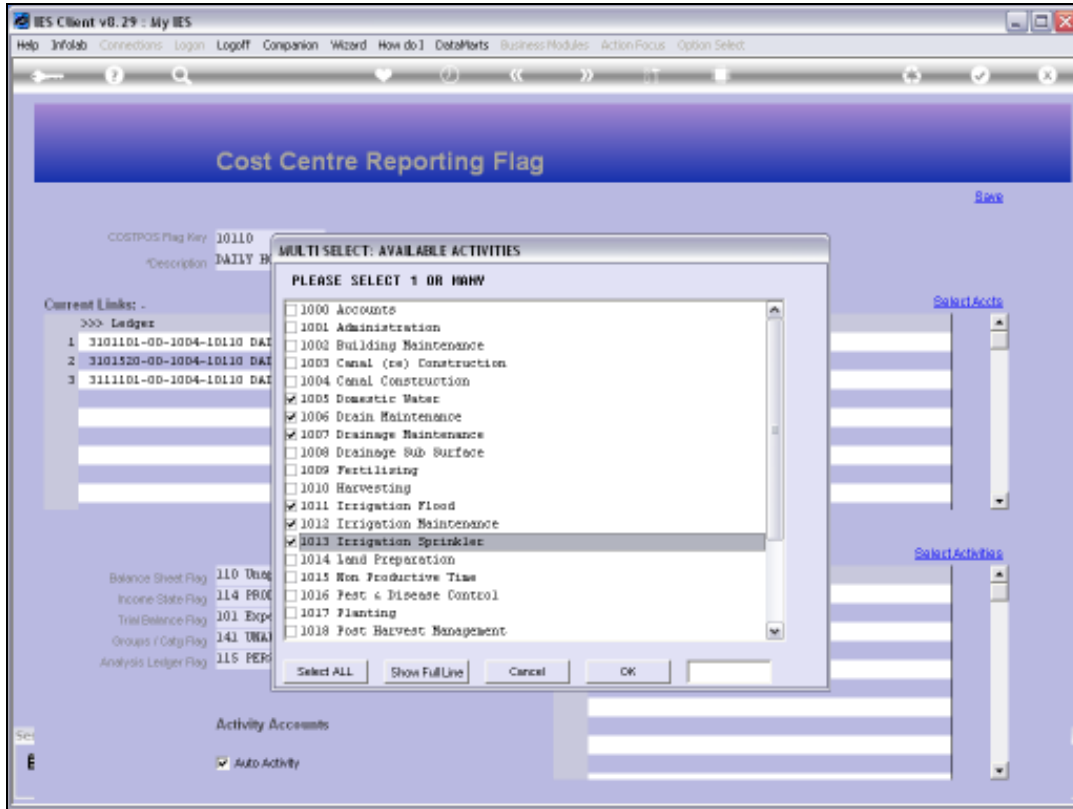


Slide 36
Slide notes:

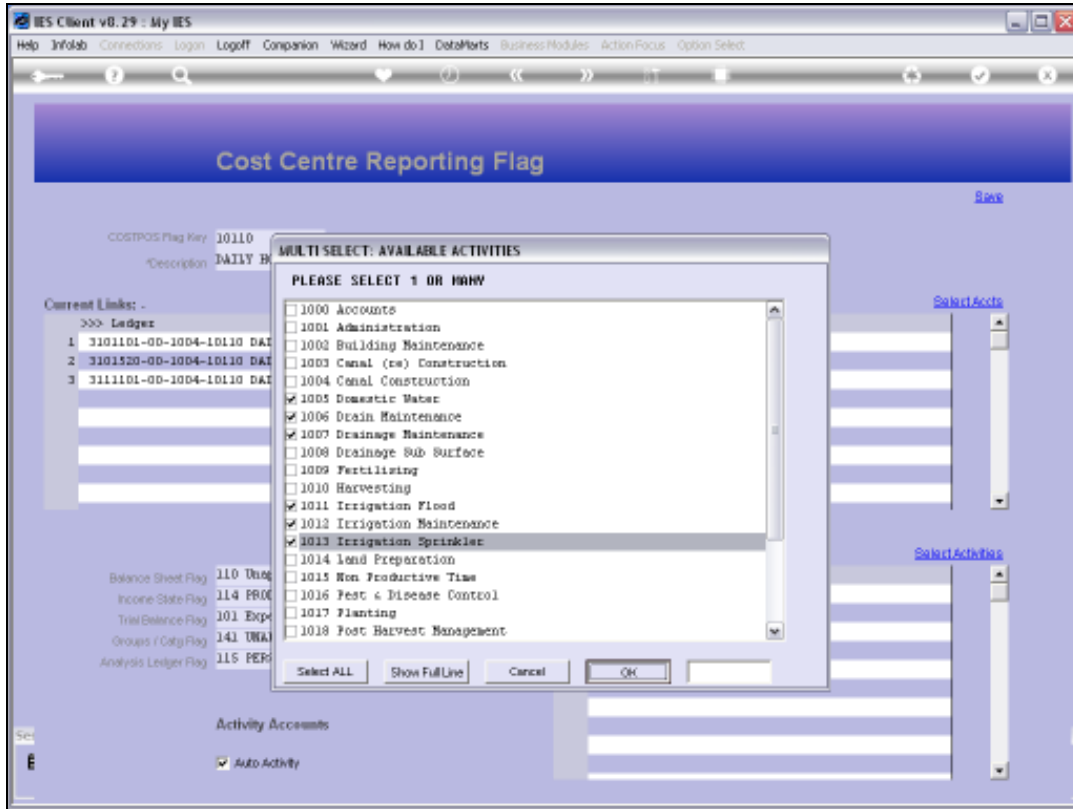


Slide 37

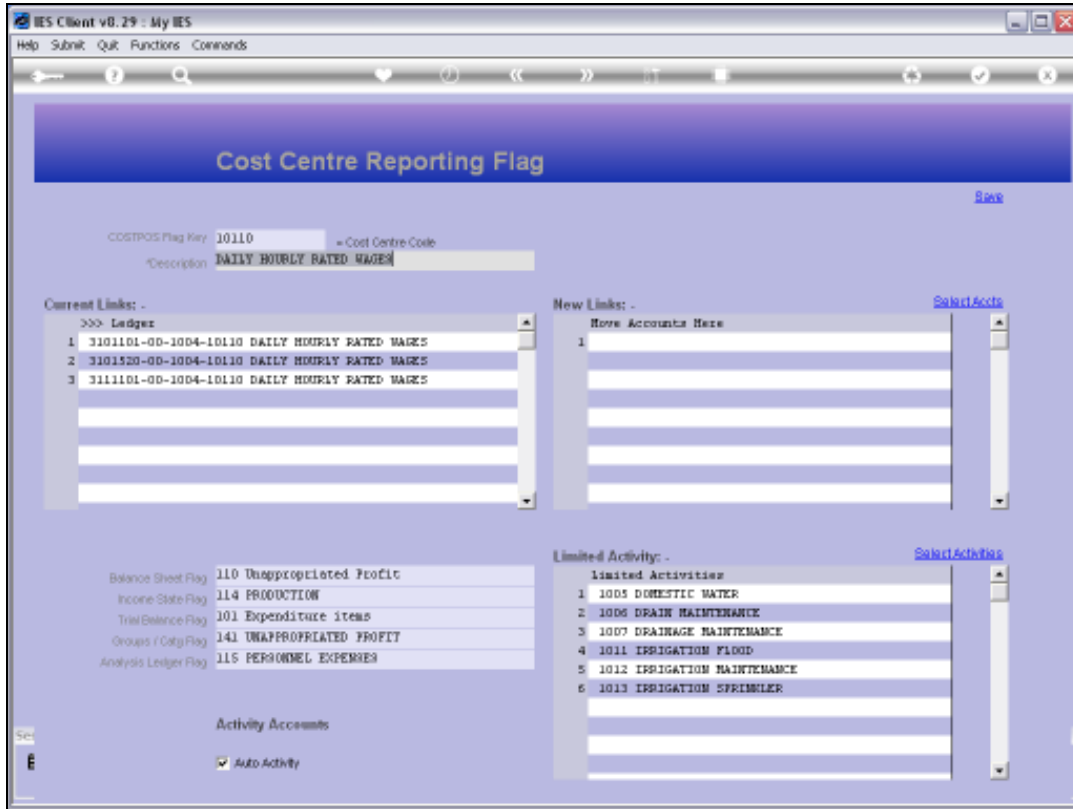
Slide notes:



Slide 38
Slide notes:

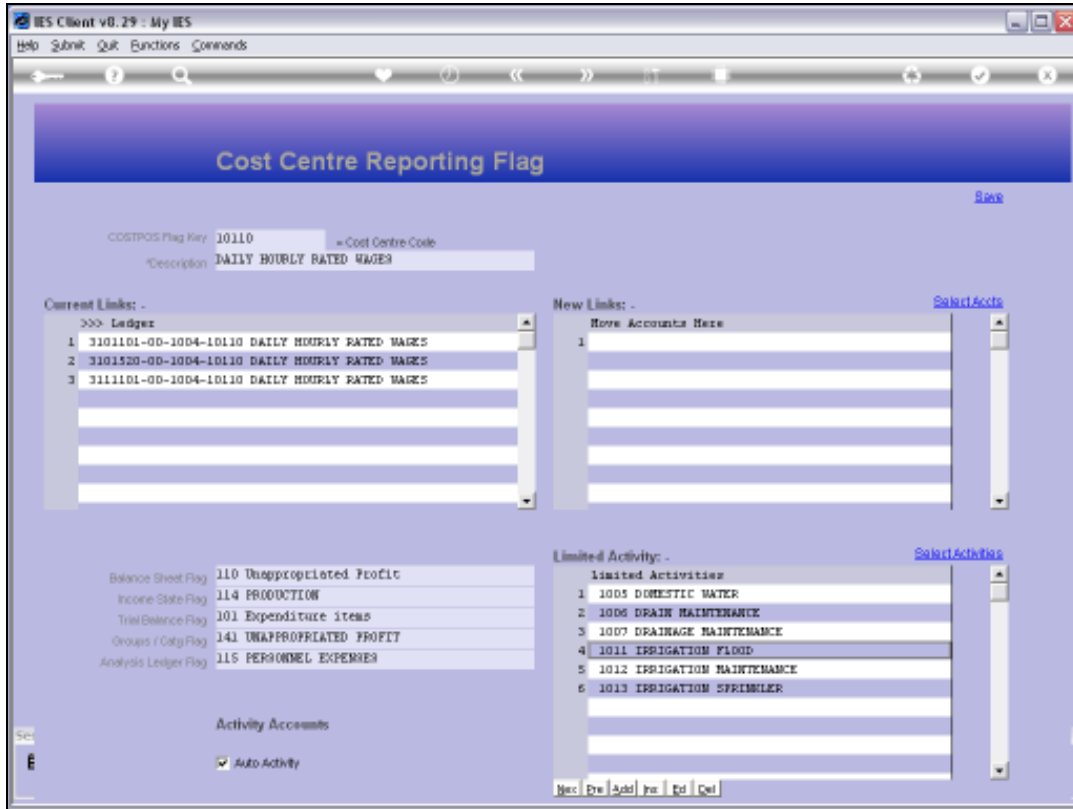


Slide 39
Slide notes:

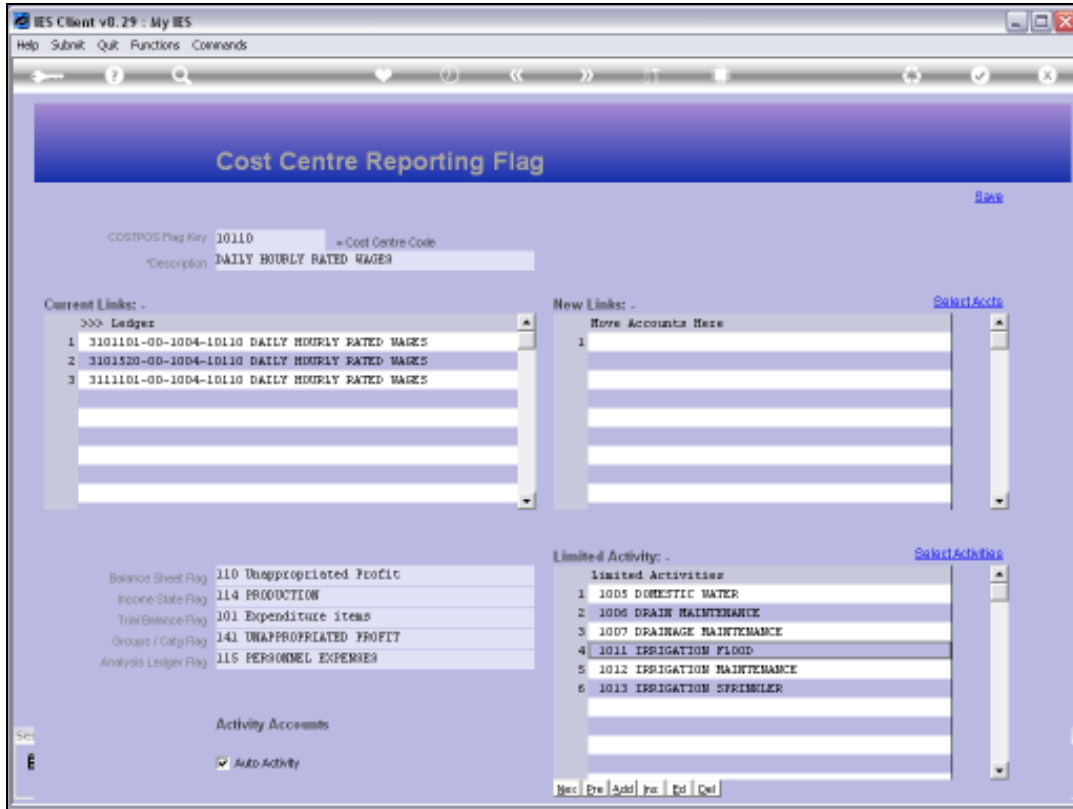


Slide 40

Slide notes: So, in this example, while Auto Activity is switched on, the only Activities that will automatically be opened on demand are the ones listed at Limited Activity.



Slide 41
Slide notes:



Slide 42
Slide notes: