

Slide 1

Slide notes: A Captured Ticket cannot be posted until it is approved. The "approval" sequence starts with the "Process" option for Tickets.

Weighbridge FFB: Ticket Processing

[Approve](#) [Post](#) [Drill](#) [Quit](#)
[Bulk Approve](#) [Bulk Post](#)
[Undo Approve](#) [Reverse](#)

Ticket Key |
 Operator
 Batch
 Delivery Order No
 Ticket Date
 Time In
 Time Out
 Truck Registration
 Driver
 Fruit Bunch Count
 Gross Weight
 Tarra
 Netto 1
 FFB Count (Rejected)
 Pot (Rejected weight)
 Netto 2
 Period

Status: -
 Ticket Status
 Komidel
 Product Code

Supply from our Blocks: -

Block	Plant Year	FFB Count
1		

External Supply to our Mill: -

Supplier

Our FFB to another Mill: -

Debtor Account

Pricing: -

Price (per Kg)
 Price (loading)

Slide 2

Slide notes: For manual approval, we need to enter the Ticket Number that we wish to work with.

Weighbridge FFB: Ticket Processing

Approve Post Drill Quit
Bulk Approve Bulk Post
Undo Approve Reverse

Ticket Key:
Operator:
Batch:
Delivery Order No:
Ticket Date:
Time In:
Time Out:
Truck Registration:
Driver:
Fruit Bunch Count:
Gross Weight:
Tarra:
Netto 1:
FFB Count (Rejected):
Pot (Rejected weight):
Netto 2:
Period:

Status: -
Ticket Status:
Komidel:
Product Code:

Supply from our Blocks: -

Block	Plant	Year	FFB Count
1			

External Supply to our Mill: -
Supplier:

Our FFB to another Mill: -
Debtor Account:

Pricing: -
Price (per Kg):
Price (loading):

Slide 3
Slide notes:

IES Client v8.35 : My IES

Help Submit Quit Functions Commands

← ? 🔍 ♥ 🕒 ⏪ ⏩ 🗑️ 📄 🔄 ✓ ✕

Weighbridge FFB: Ticket Processing

[Approve](#) [Post](#)
[Bulk Approve](#) [Bulk Post](#)
[Undo Approve](#) [Reverse](#)

Ticket Key
 Operator
 Batch
 Delivery Order No
 Ticket Date
 Time In
 Time Out
 Truck Registration
 Driver
 Fruit Bunch Count
 Gross Weight
 Tarra
 Netto 1
 FFB Count (Rejected)
 Pot (Rejected weight)
 Netto 2
 Period

[Drill](#) [Quit](#)

Status: -
 Ticket Status
 Komidel
 Product Code

Supply from our Blocks: -

Block	Plant	Year	FFB Count
1	101	2001	150

External Supply to our Mill: -
 Supplier

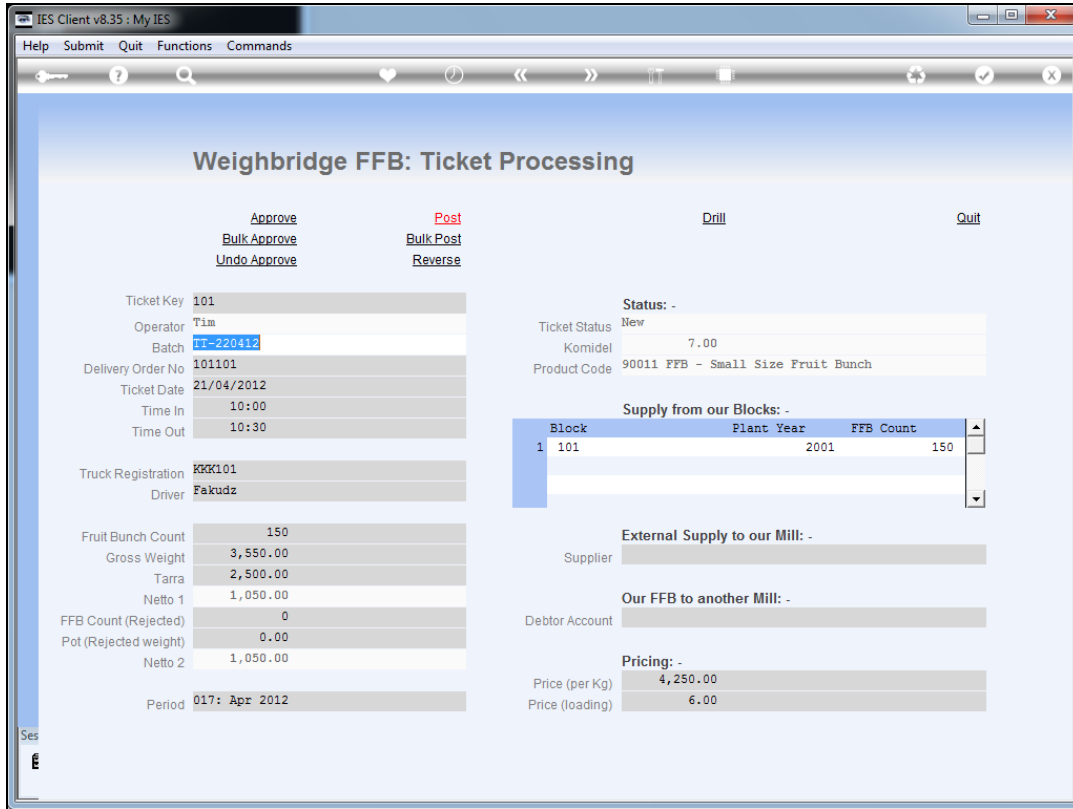
Our FFB to another Mill: -
 Debtor Account

Pricing: -
 Price (per Kg)
 Price (loading)

Ses
 E

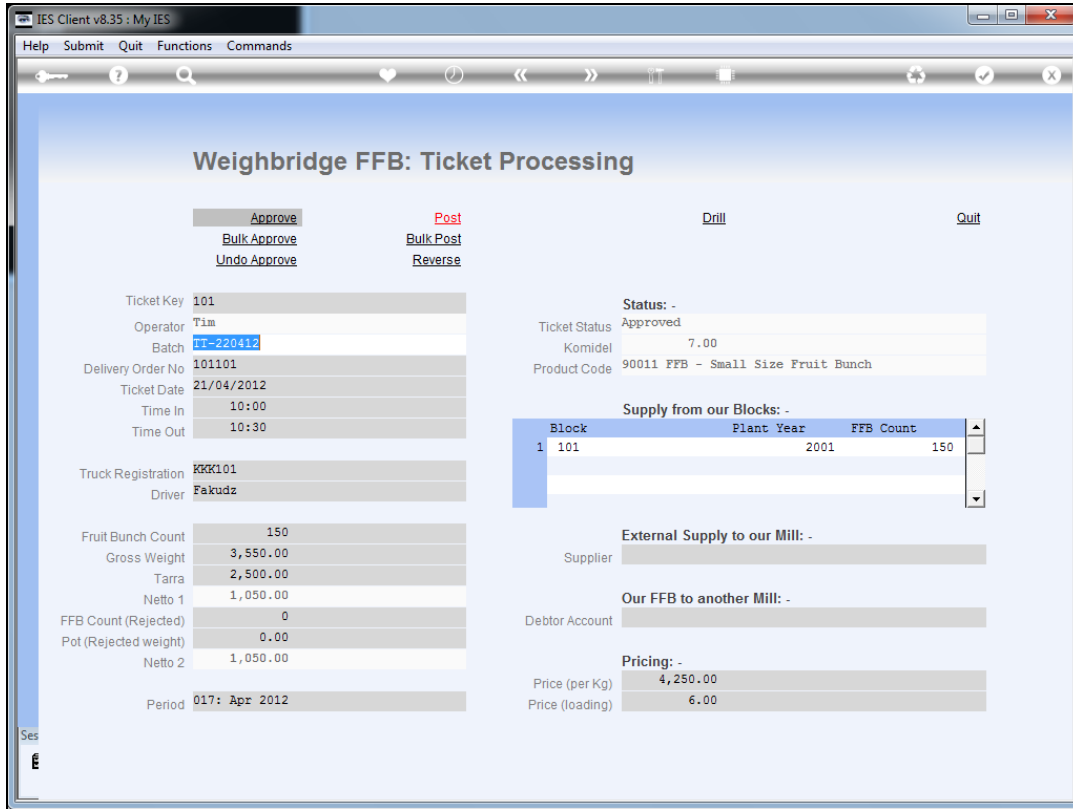
Slide 4

Slide notes: For any approval, the ticket status must currently be "new".



Slide 5

Slide notes: To manually approve the Ticket, we may choose "approve".



Slide 6

Slide notes: The Ticket status then changes to approved, and that status is already saved. Once approved, the Ticket can no longer be edited, unless we undo the approval.

IES Client v8.35 : My IES

Help Submit Quit Functions Commands

⏪ ⏩ ⏴ ⏵ ⏶ ⏷ ⏸ ⏹ ⏺ ⏻ ⏼ ⏽ ⏾ ⏿

Weighbridge FFB: Ticket Processing

[Approve](#) [Post](#)
[Bulk Approve](#) [Bulk Post](#)
[Undo Approve](#) [Reverse](#)

Ticket Key
 Operator
 Batch
 Delivery Order No
 Ticket Date
 Time In
 Time Out
 Truck Registration
 Driver
 Fruit Bunch Count
 Gross Weight
 Tarra
 Netto 1
 FFB Count (Rejected)
 Pot (Rejected weight)
 Netto 2
 Period

[Drill](#) [Quit](#)

Status: -
 Ticket Status
 Komidel
 Product Code

Supply from our Blocks: -

Block	Plant	Year	FFB Count
1	101	2001	150

External Supply to our Mill: -
 Supplier

Our FFB to another Mill: -
 Debtor Account

Pricing: -
 Price (per Kg)
 Price (loading)

Ses

É

Slide 7
 Slide notes: