

Slide 1

Slide notes: The "process" option for Tickets will reveal various processing options, including an "undo" of prior approval.

Slide 2

Slide notes: To undo any prior approval, we have to do it Ticket by Ticket. We start by entering the Ticket to process.

The screenshot shows a software window titled "IES Client v8.35: My IES" with a menu bar (Help, Submit, Quit, Functions, Commands) and a toolbar. The main content area is titled "Weighbridge FFB: Ticket Processing".

At the top, there are four main action buttons: Approve, Post, Drill, and Quit. Below these are sub-actions: Bulk Approve, Bulk Post, Undo Approve, and Reverse.

The interface is divided into several sections:

- Input Fields:** Ticket Key, Operator, Batch, Delivery Order No, Ticket Date, Time In, Time Out, Truck Registration, Driver, Fruit Bunch Count, Gross Weight, Tarra, Netto 1 (0.00), FFB Count (Rejected), Pot (Rejected weight), Netto 2 (0.00), and Period.
- Status:** Status: -, Ticket Status (Komidel), and Product Code (0.00).
- Supply from our Blocks:** A table with columns: Block, Plant, Year, FFB Count. Row 1: 1, [blank], [blank], [blank].
- External Supply to our Mill:** Supplier [blank].
- Our FFB to another Mill:** Debtor Account [blank].
- Pricing:** Price (per Kg) (0.00) and Price (loading) (0.00).

There is a small "Ses" label and a currency symbol "€" in the bottom left corner of the window.

Slide 3
Slide notes:

IES Client v8.35 : My IES

Help Submit Quit Functions Commands

Weighbridge FFB: Ticket Processing

[Approve](#) [Post](#) [Drill](#) [Quit](#)
[Bulk Approve](#) [Bulk Post](#)
[Undo Approve](#) [Reverse](#)

Ticket Key

Operator

Batch

Delivery Order No

Ticket Date

Time In

Time Out

Truck Registration

Driver

Fruit Bunch Count

Gross Weight

Tarra

Netto 1

FFB Count (Rejected)

Pot (Rejected weight)

Netto 2

Period

Status: -

Ticket Status

Komidel

Product Code

Supply from our Blocks: -

Block	Plant Year	FFB Count
1		

External Supply to our Mill: -

Supplier

Our FFB to another Mill: -

Debtor Account

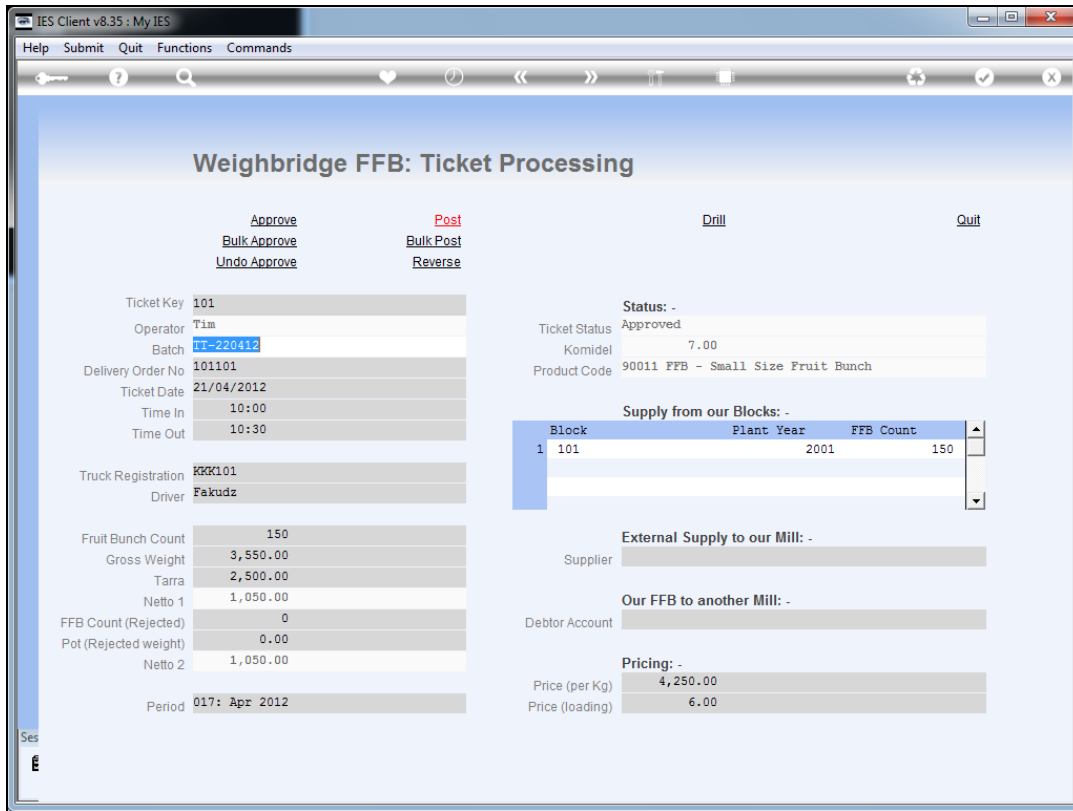
Pricing: -

Price (per Kg)

Price (loading)

Ses

Slide 4
Slide notes:



Slide 5

Slide notes: We can only undo approval if the current status says "approved". In this case, if we choose "Undo Approve" then the Ticket status will be changed back to "New" which means the Ticket details can be edited again before we approve it once more for processing.

IES Client v8.35 : My IES

Help Submit Quit Functions Commands

Weighbridge FFB: Ticket Processing

[Approve](#) [Post](#) [Drill](#) [Quit](#)
[Bulk Approve](#) [Bulk Post](#)
[Undo Approve](#) [Reverse](#)

Ticket Key	101	Status:	-
Operator	Tim	Ticket Status	New
Batch	11-220412	Komidel	7.00
Delivery Order No	101101	Product Code	90011 FFB - Small Size Fruit Bunch
Ticket Date	21/04/2012		
Time In	10:00		
Time Out	10:30		
Truck Registration	KKK101		
Driver	Fakudz		
Fruit Bunch Count	150		
Gross Weight	3,550.00		
Tarra	2,500.00		
Netto 1	1,050.00		
FFB Count (Rejected)	0		
Pot (Rejected weight)	0.00		
Netto 2	1,050.00		
Period	017: Apr 2012		

Supply from our Blocks: -

Block	Plant	Year	FFB Count
1	101	2001	150

External Supply to our Mill: -

Supplier

Our FFB to another Mill: -

Debtor Account

Pricing: -

Price (per Kg)	4,250.00
Price (loading)	6.00

Slide 6
Slide notes:

IES Client v8.35 : My IES

Help Submit Quit Functions Commands

← ? 🔍 ♥ 🕒 ⏪ ⏩ 🗑️ 📄 🔄 ✓ ✕

Weighbridge FFB: Ticket Processing

[Approve](#) [Post](#)
[Bulk Approve](#) [Bulk Post](#)
[Undo Approve](#) [Reverse](#)

Ticket Key
 Operator
 Batch
 Delivery Order No
 Ticket Date
 Time In
 Time Out
 Truck Registration
 Driver
 Fruit Bunch Count
 Gross Weight
 Tarra
 Netto 1
 FFB Count (Rejected)
 Pot (Rejected weight)
 Netto 2
 Period

[Drill](#) [Quit](#)

Status: -
 Ticket Status
 Komidel
 Product Code

Supply from our Blocks: -

Block	Plant	Year	FFB Count	
1	101	2001	150	▲
▼				

External Supply to our Mill: -
 Supplier

Our FFB to another Mill: -
 Debtor Account

Pricing: -
 Price (per Kg)
 Price (loading)

Ses

Slide 7
 Slide notes: