

Slide 1

Slide notes: For manual posting of a Ticket, on a one-by-one basis, we will choose the "process" Ticket option.

The screenshot shows a software window titled "IES Client v8.35: My IES" with a menu bar (Help, Submit, Quit, Functions, Commands) and a toolbar. The main content area is titled "Weighbridge FFB: Ticket Processing".

At the top, there are four buttons: **Approve**, **Post**, **Drill**, and **Quit**. Below them are **Bulk Approve**, **Bulk Post**, **Undo Approve**, and **Reverse**.

The interface is divided into several sections:

- Left Section:** A list of input fields for ticket details: Ticket Key, Operator, Batch, Delivery Order No, Ticket Date, Time In, Time Out, Truck Registration, Driver, Fruit Bunch Count, Gross Weight, Tarra, Netto 1 (0.00), FFB Count (Rejected), Pot (Rejected weight), Netto 2 (0.00), and Period.
- Right Section:** Fields for Status, Ticket Status, Komidel (0.00), and Product Code.
- Supply from our Blocks:** A table with columns: Block, Plant Year, FFB Count. A table with one row containing the number "1".
- External Supply to our Mill:** A field for Supplier.
- Our FFB to another Mill:** A field for Debtor Account.
- Pricing:** Fields for Price (per Kg) (0.00) and Price (loading) (0.00).

At the bottom left, there is a small "Ses" label and a logo.

Slide 2
Slide notes:

The screenshot shows a software window titled "IES Client v8.35: My IES" with a menu bar (Help, Submit, Quit, Functions, Commands) and a toolbar. The main content area is titled "Weighbridge FFB: Ticket Processing".

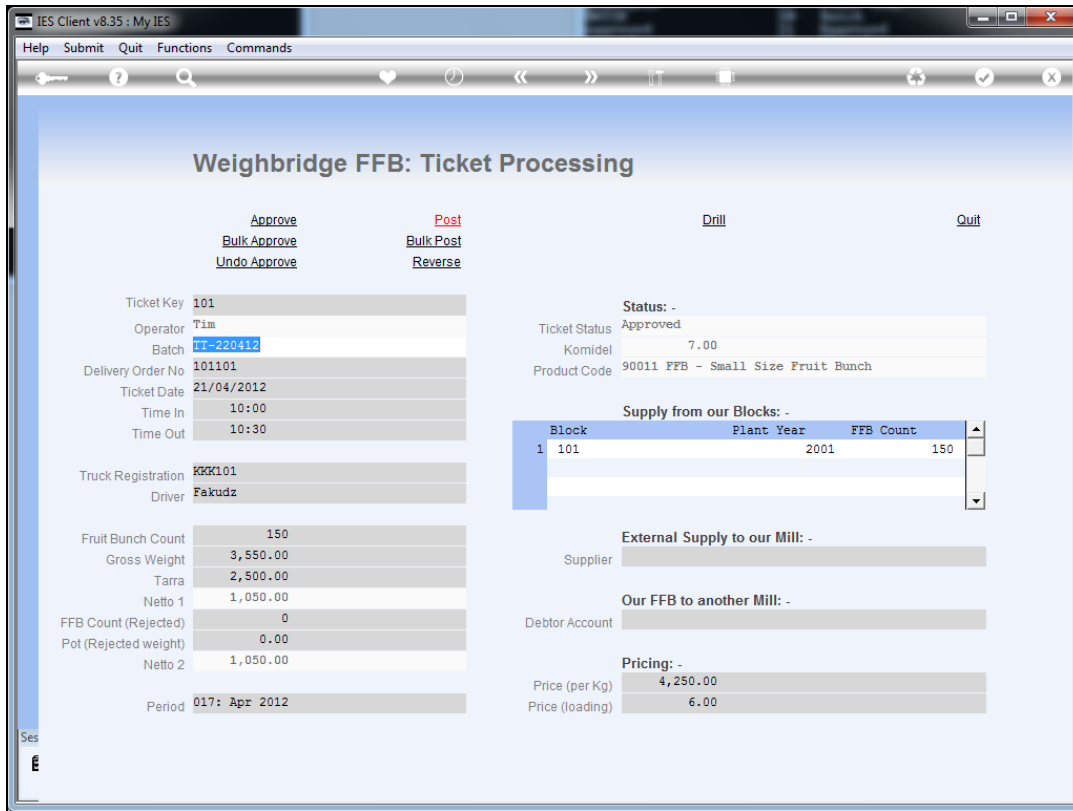
At the top of the main area, there are four buttons: Approve, Post, Drill, and Quit. Below these are two columns of buttons: Bulk Approve, Bulk Post, Undo Approve, and Reverse.

The interface is divided into several sections:

- Input Fields:** Ticket Key, Operator, Batch, Delivery Order No, Ticket Date, Time In, Time Out, Truck Registration, Driver, Fruit Bunch Count, Gross Weight, Tarra, Netto 1 (0.00), FFB Count (Rejected), Pot (Rejected weight), Netto 2 (0.00), and Period.
- Status:** Status: -, Ticket Status (Komidel), Komidel (0.00), Product Code.
- Supply from our Blocks:** A table with columns: Block, Plant, Year, FFB Count. Row 1: 1, [blank], [blank], [blank].
- External Supply to our Mill:** Supplier.
- Our FFB to another Mill:** Debtor Account.
- Pricing:** Price (per Kg) (0.00), Price (loading) (0.00).

At the bottom left, there is a small "Ses" label and a logo.

Slide 3
Slide notes:



Slide 4

Slide notes: The Ticket must have a current status that says "approved", then we can post it by choosing "Post".

IES Client v8.35 : My IES

Help Submit Quit Functions Commands

Weighbridge FFB: Ticket Processing

[Approve](#) [Post](#) [Drill](#) [Quit](#)
[Bulk Approve](#) [Bulk Post](#)
[Undo Approve](#) [Reverse](#)

Ticket Key	101	Status:	-
Operator	Tim	Ticket Status	Approved
Batch	11-220412	Komidel	7.00
Delivery Order No	101101	Product Code	90011 FFB - Small Size Fruit Bunch
Ticket Date	21/04/2012		
Time In	10:00		
Time Out	10:30		
Truck Registration	KKK101		
Driver	Fakudz		
Fruit Bunch Count	150		
Gross Weight	3,550.00		
Tarra	2,500.00		
Netto 1	1,050.00		
FFB Count (Rejected)	0		
Pot (Rejected weight)	0.00		
Netto 2	1,050.00		
Period	017: Apr 2012		

Supply from our Blocks: -

Block	Plant	Year	FFB Count
1 101		2001	150

External Supply to our Mill: -

Supplier

Our FFB to another Mill: -

Debtor Account

Pricing: -

Price (per Kg)	4,250.00
Price (loading)	6.00

Slide 5
Slide notes:

IES Client v8.35 : My IES

Help Submit Quit Functions Commands

← ? 🔍 ♥ 🕒 ⏪ ⏩ 🗑️ 📄

Weighbridge FFB: Ticket Processing

[Approve](#) [Post](#)
[Bulk Approve](#) [Bulk Post](#)
[Undo Approve](#) [Reverse](#)

Ticket Key
 Operator
 Batch
 Delivery Order No
 Ticket Date
 Time In
 Time Out
 Truck Registration
 Driver
 Fruit Bunch Count
 Gross Weight
 Tarra
 Netto 1
 FFB Count (Rejected)
 Pot (Rejected weight)
 Netto 2
 Period

[Drill](#) [Quit](#)

Status: -
 Ticket Status
 Komidel
 Product Code

Supply from our Blocks: -

Block	Plant	Year	FFB Count
1	101	2001	150

External Supply to our Mill: -
 Supplier

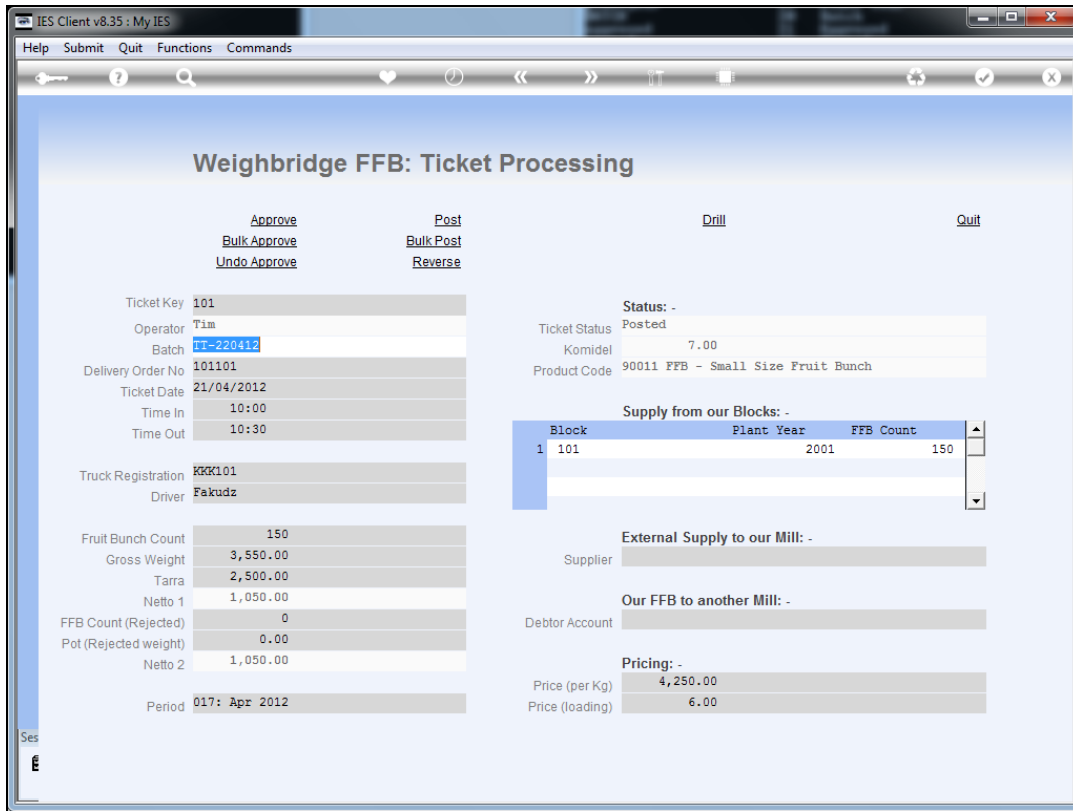
Our FFB to another Mill: -
 Debtor Account

Pricing: -
 Price (per Kg)
 Price (loading)

Ses

É

Slide 6
 Slide notes:



Slide 7

Slide notes: If there is any problem with an Account or other object not being open, or missing, then an error will be reported, and we typically use the manual option to find out why a Ticket does not post when we use the bulk method to post. Once all rules have been passed satisfactorily, the system will post the Ticket and will change the status to "posted".