

Slide 1

Slide notes: For bulk posting of Tickets, we will choose the "Process" Ticket option.

IES Client v8.35 : My IES

Help Submit Quit Functions Commands

⌨ ? 🔍 ❤ ⌚ ⏪ ⏩ 📄 🗑 ☑

Weighbridge FFB: Ticket Processing

[Approve](#) [Post](#) [Drill](#) [Quit](#)
[Bulk Approve](#) [Bulk Post](#)
[Undo Approve](#) [Reverse](#)

Ticket Key		Status: -
Operator		Ticket Status
Batch		Komidel 0.00
Delivery Order No		Product Code
Ticket Date		
Time In		
Time Out		
Truck Registration		
Driver		
Fruit Bunch Count		
Gross Weight		
Tarra		
Netto 1	0.00	
FFB Count (Rejected)		
Pot (Rejected weight)		
Netto 2	0.00	
Period		

Supply from our Blocks: -

Block	Plant Year	FFB Count
1		

External Supply to our Mill: -

Supplier

Our FFB to another Mill: -

Debtor Account

Pricing: -

Price (per Kg) 0.00
Price (loading) 0.00

Slide 2

Slide notes: Here we can simply choose "Bulk Post" to post by Batch or all available Tickets.

IES Client v8.35 : My IES

Help Submit Quit Functions Commands

?

Q

♥

🕒

⏪

⏩

🗑

📄

🔄

✅

✖

Approve

Bulk Approve

Undo Approve

Post

Bulk Post

Reverse

Drill

Quit

Ticket Key

Operator

Batch

Delivery Order No

Ticket Date

Time In

Time Out

Truck Registration

Driver

Fruit Bunch Count

Gross Weight

Tarra

Netto 1

FFB Count (Rejected)

Pot (Rejected weight)

Netto 2

Period

Status: -

Ticket Status

Komidel

0.00

Product Code

Supply from our Blocks: -

Block	Plant	Year	FFB Count
1			

External Supply to our Mill: -

Supplier

Our FFB to another Mill: -

Debtor Account

Pricing: -

Price (per Kg)

0.00

Price (loading)

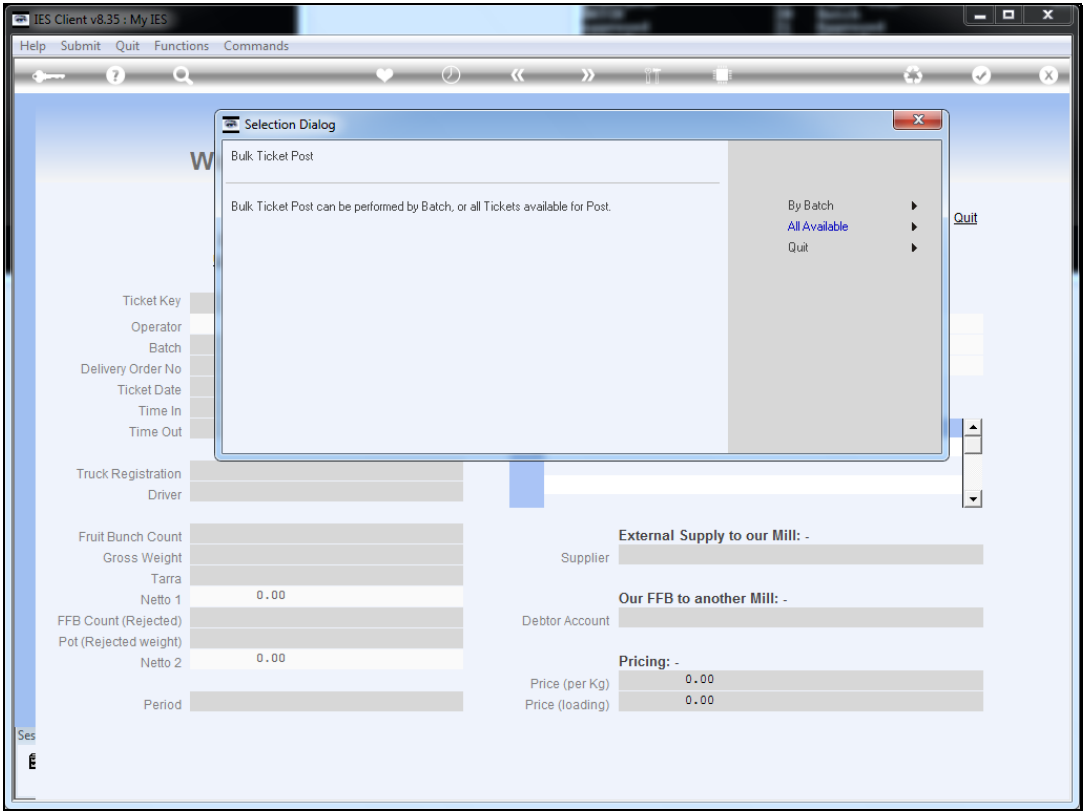
0.00

Ses

€

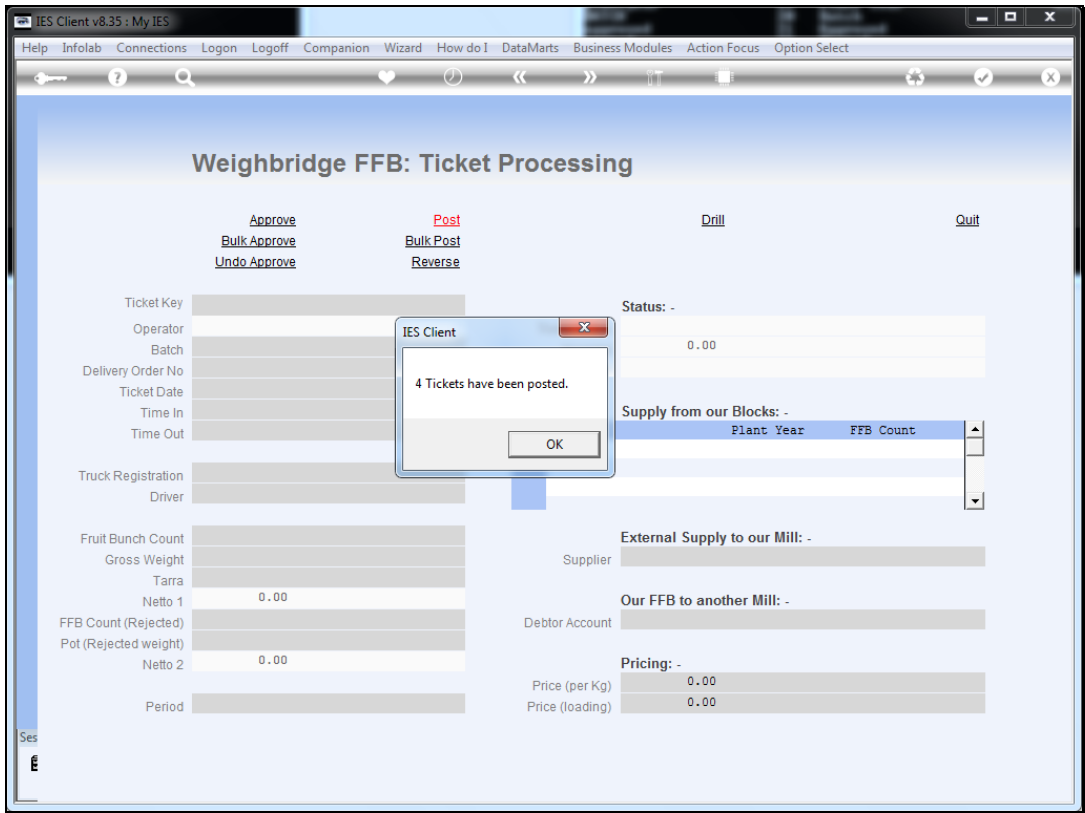
Slide 3
Slide notes:

Page 3 of 7



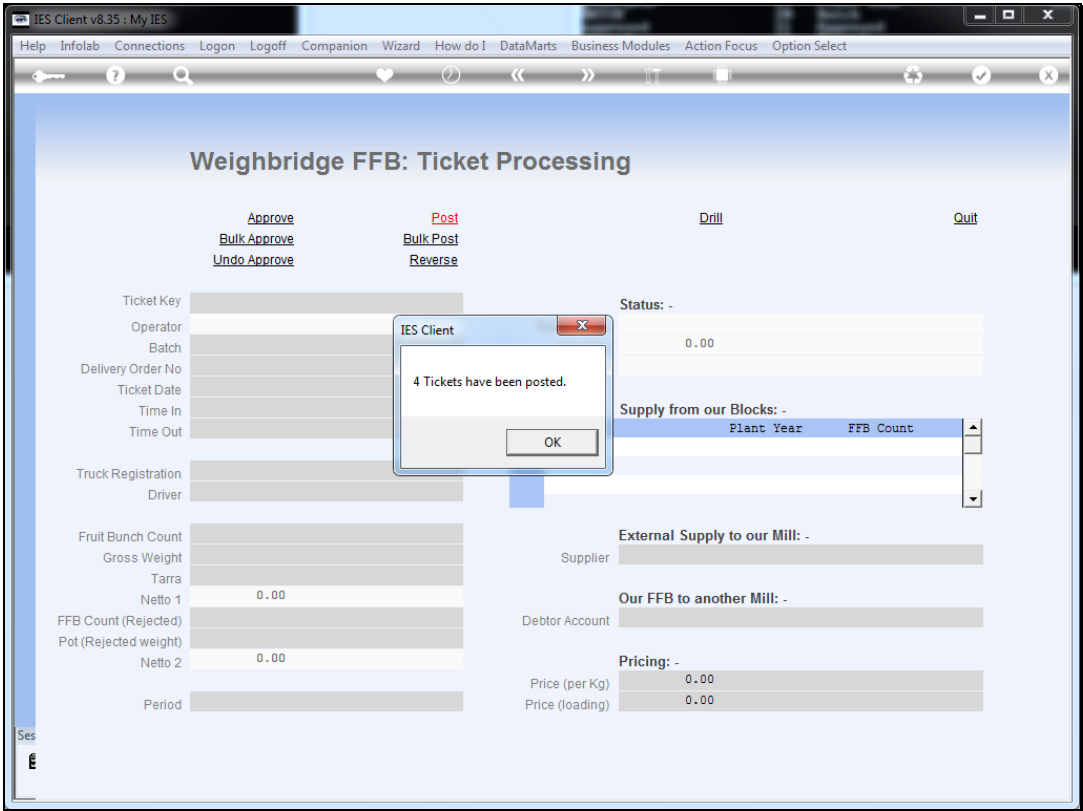
Slide 4

Slide notes:



Slide 5

Slide notes: The system will advise the number of Tickets that have been posted, and if there are problems with any Tickets, then we will get an appropriate message about that. Tickets that refuse to post with the bulk method can be tried with the manual posting, to reveal the exact errors that need to be addressed before such a Ticket will be posted.



Slide 6
Slide notes:

IES Client v8.35 : My IES

Help Submit Quit Functions Commands

?

Q

♥

🕒

⏪

⏩

📄

🔄

✓

✕

Weighbridge FFB: Ticket Processing

Approve

Bulk Approve

Undo Approve

Post

Bulk Post

Reverse

Drill

Quit

Ticket Key

Operator

Batch

Delivery Order No

Ticket Date

Time In

Time Out

Truck Registration

Driver

Fruit Bunch Count

Gross Weight

Tarra

Netto 1

FFB Count (Rejected)

Pot (Rejected weight)

Netto 2

Period

Status: -

Ticket Status

Komidel

0.00

Product Code

Supply from our Blocks: -

Block	Plant Year	FFB Count
1		

External Supply to our Mill: -

Supplier

Our FFB to another Mill: -

Debtor Account

Pricing: -

Price (per Kg)

0.00

Price (loading)

0.00

Slide 7
Slide notes:

Page 7 of 7