

Weighbridge FFB: Ticket Processing

Approve Post Drill Quit
Bulk Approve Bulk Post
Undo Approve Reverse

Ticket Key
Operator
Batch
Delivery Order No
Ticket Date
Time In
Time Out
Truck Registration
Driver
Fruit Bunch Count
Gross Weight
Tarra
Netto 1
FFB Count (Rejected)
Pot (Rejected weight)
Netto 2
Period

Status: -
Ticket Status
Product Code

Supply from our Blocks: -

Block	Plant Year	FFB Count
1		

External Supply to our Mill: -
Supplier

Our FFB to another Mill: -
Debtor Account

Pricing: -
Price (per Kg)
Price (loading)

Ses
E

Slide 1

Slide notes: A posted Ticket may be reversed from the Ticket Process screen.

Weighbridge FFB: Ticket Processing

[Approve](#) [Post](#) [Drill](#) [Quit](#)
[Bulk Approve](#) [Bulk Post](#)
[Undo Approve](#) [Reverse](#)

Ticket Key:
Operator:
Batch:
Delivery Order No:
Ticket Date:
Time In:
Time Out:
Truck Registration:
Driver:
Fruit Bunch Count:
Gross Weight:
Tarra:
Netto 1:
FFB Count (Rejected):
Pot (Rejected weight):
Netto 2:
Period:

Status: -
Ticket Status:
Komidel:
Product Code:

Supply from our Blocks: -

Block	Plant Year	FFB Count
1		

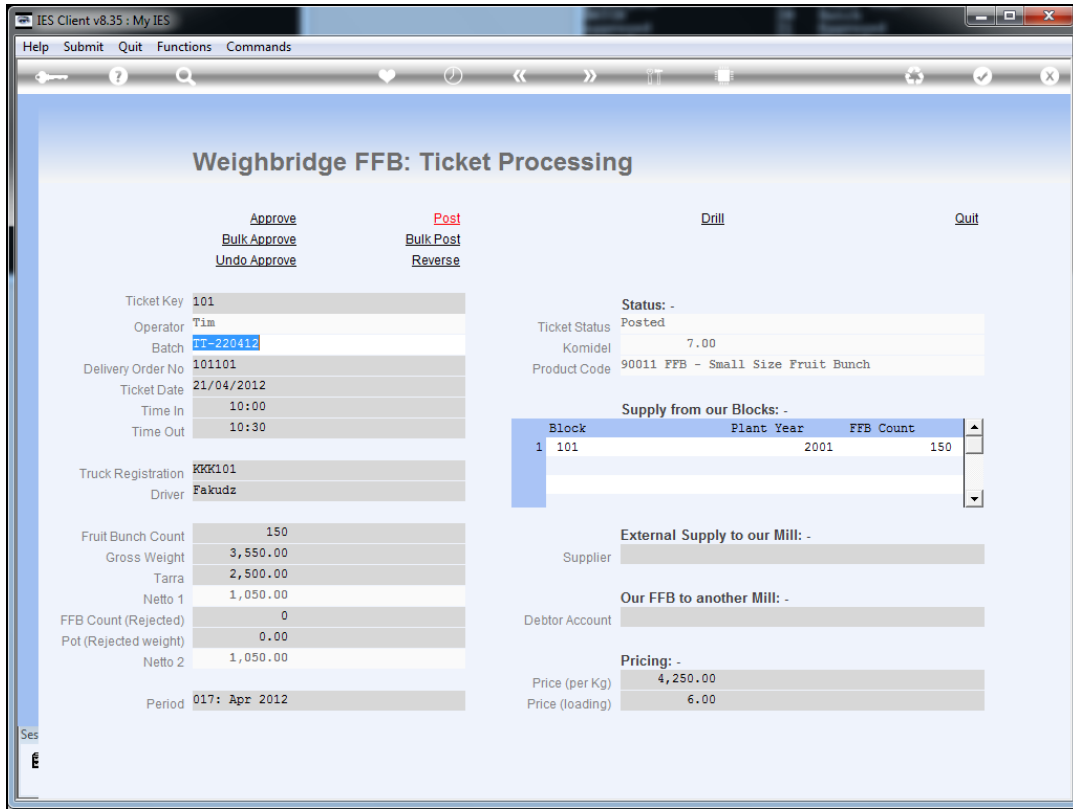
External Supply to our Mill: -
Supplier:

Our FFB to another Mill: -
Debtor Account:

Pricing: -
Price (per Kg):
Price (loading):

Slide 2

Slide notes: The 1st step is to retrieve the Ticket.



Slide 3

Slide notes: Only a Ticket with a status of "posted" can be reversed.

IES Client v8.35 : My IES

Help Submit Quit Functions Commands

Weighbridge FFB: Ticket Processing

[Approve](#) [Post](#)
[Bulk Approve](#) [Bulk Post](#)
[Undo Approve](#) [Reverse](#)

Ticket Key: 101

Operator: Tim

Batch: 11-220412

Delivery Order No: 101101

Ticket Date: 21/04/2012

Time In: 10:00

Time Out: 10:30

Truck Registration: KKK101

Driver: Fakudz

Fruit Bunch Count: 150

Gross Weight: 3,550.00

Tarra: 2,500.00

Netto 1: 1,050.00

FFB Count (Rejected): 0

Pot (Rejected weight): 0.00

Netto 2: 1,050.00

Period: 017: Apr 2012

Drill Quit

Status: -

Ticket Status: Posted

Komidel: 7.00

Product Code: 90011 FFB - Small Size Fruit Bunch

Supply from our Blocks: -

Block	Plant	Year	FFB Count
1	101	2001	150

External Supply to our Mill: -

Supplier: _____

Our FFB to another Mill: -

Debtor Account: _____

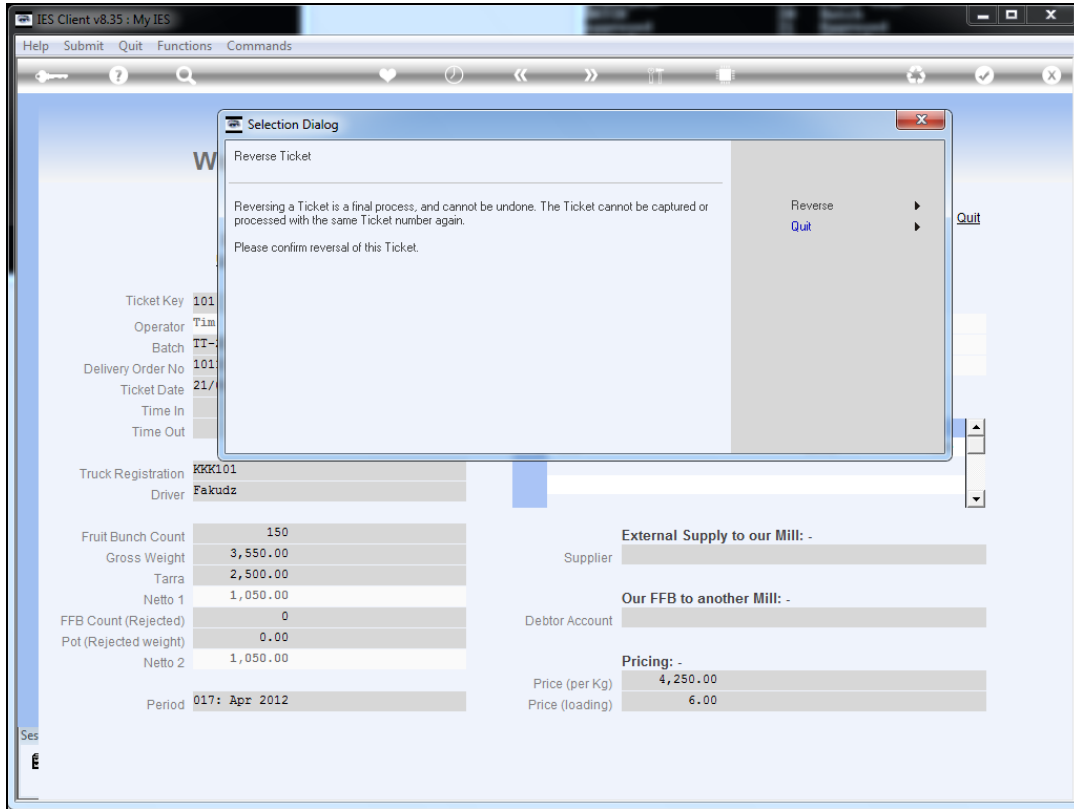
Pricing: -

Price (per Kg): 4,250.00

Price (loading): 6.00

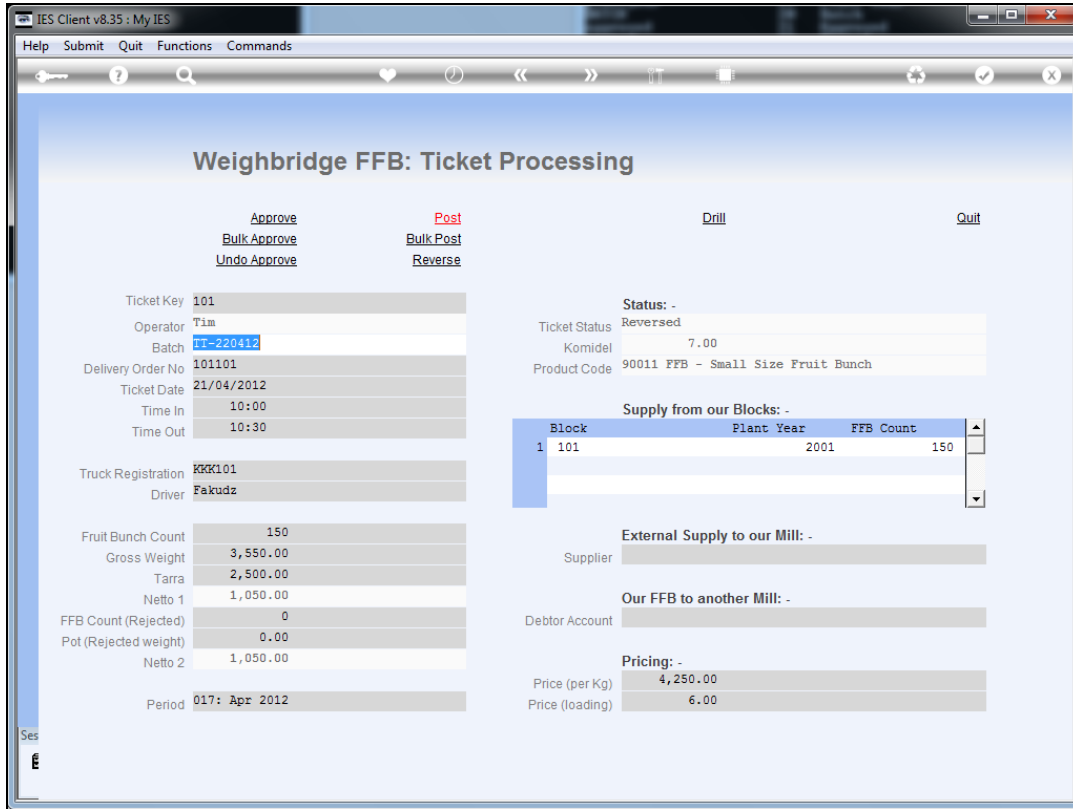
Slide 4

Slide notes: Next we choose "Reverse".



Slide 5

Slide notes: Reversal is a final process and cannot be undone. We need to confirm if we want to proceed.



Slide 6

Slide notes: The status now changes to "reversed" and that is a final state. Nothing else can now be done to the Ticket, except drilling the posting and reversal Transactions.

IES Client v8.35 : My IES

Help Submit Quit Functions Commands

Weighbridge FFB: Ticket Processing

[Approve](#) [Post](#)
[Bulk Approve](#) [Bulk Post](#)
[Undo Approve](#) [Reverse](#)

Ticket Key: 101

Operator: Tim

Batch: 11-220412

Delivery Order No: 101101

Ticket Date: 21/04/2012

Time In: 10:00

Time Out: 10:30

Truck Registration: KKK101

Driver: Fakudz

Fruit Bunch Count: 150

Gross Weight: 3,550.00

Tarra: 2,500.00

Netto 1: 1,050.00

FFB Count (Rejected): 0

Pot (Rejected weight): 0.00

Netto 2: 1,050.00

Period: 017: Apr 2012

[Drill](#) [Quit](#)

Status: - Reversed

Ticket Status: Komidel 7.00

Product Code: 90011 FFB - Small Size Fruit Bunch

Supply from our Blocks: -

Block	Plant	Year	FFB Count
1	101	2001	150

External Supply to our Mill: -

Supplier:

Our FFB to another Mill: -

Debtor Account:

Pricing: -

Price (per Kg): 4,250.00

Price (loading): 6.00

Slide 7
Slide notes: