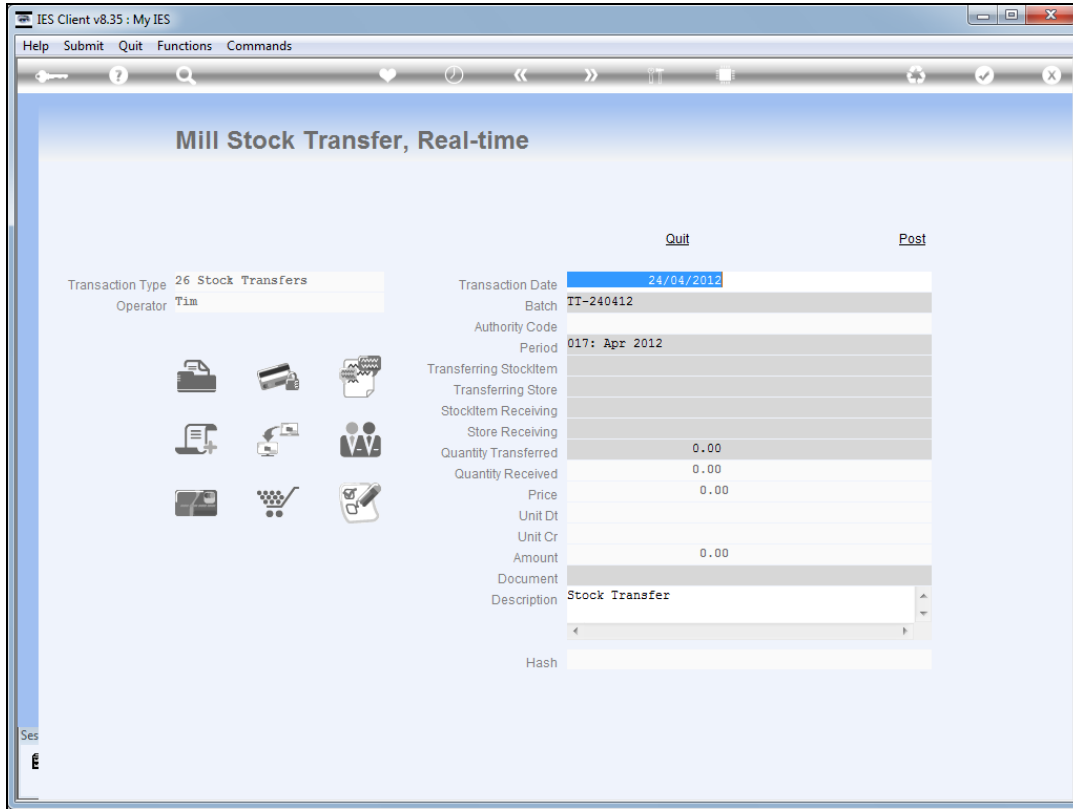
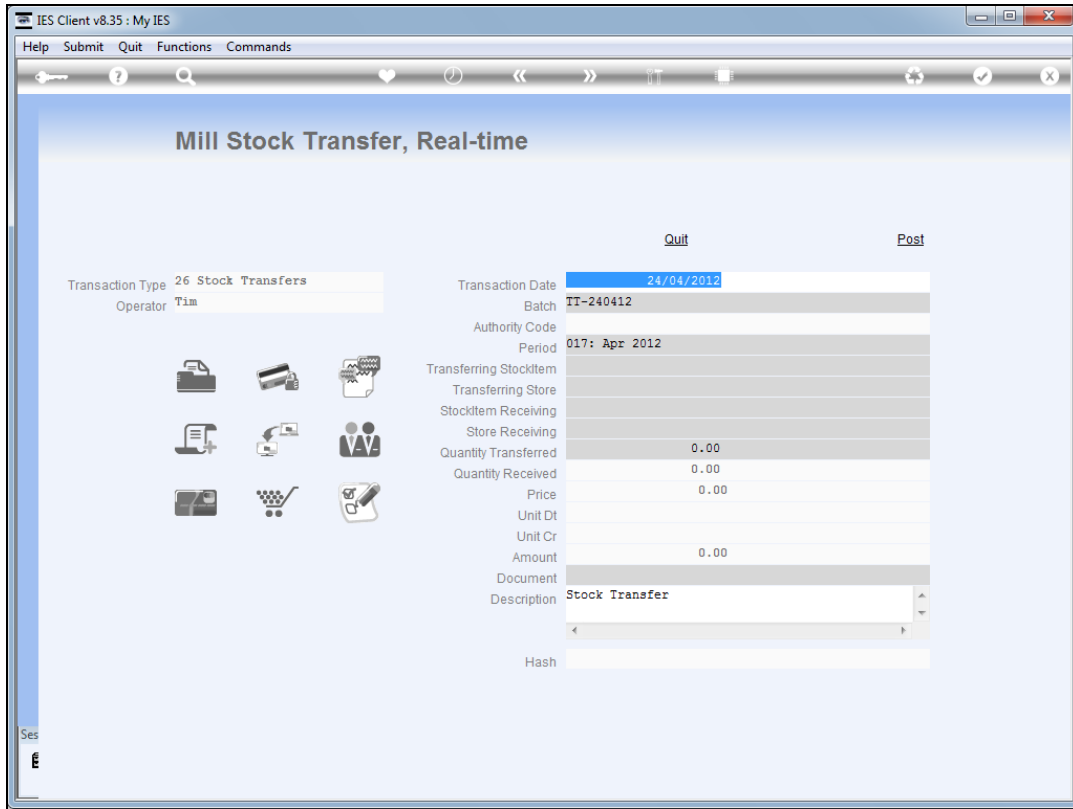


Slide 1

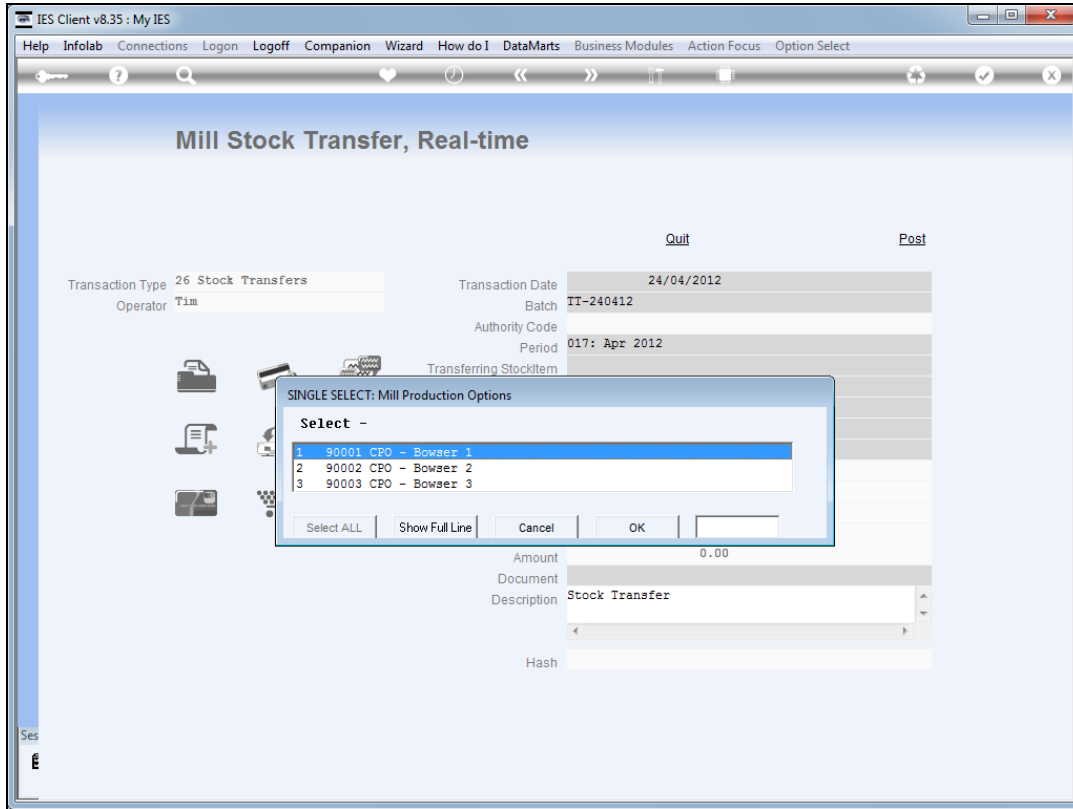
Slide notes: CPO Stock Transfers can be performed by choosing the Stock Transfer option.



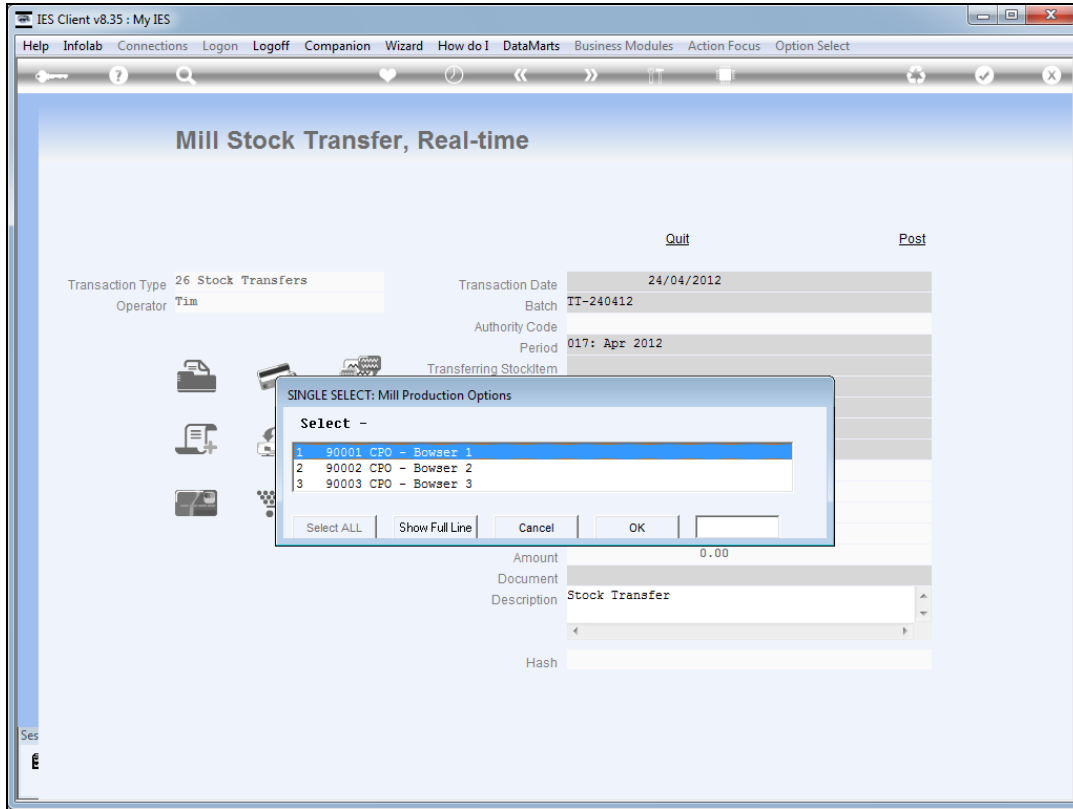
Slide 2
Slide notes:



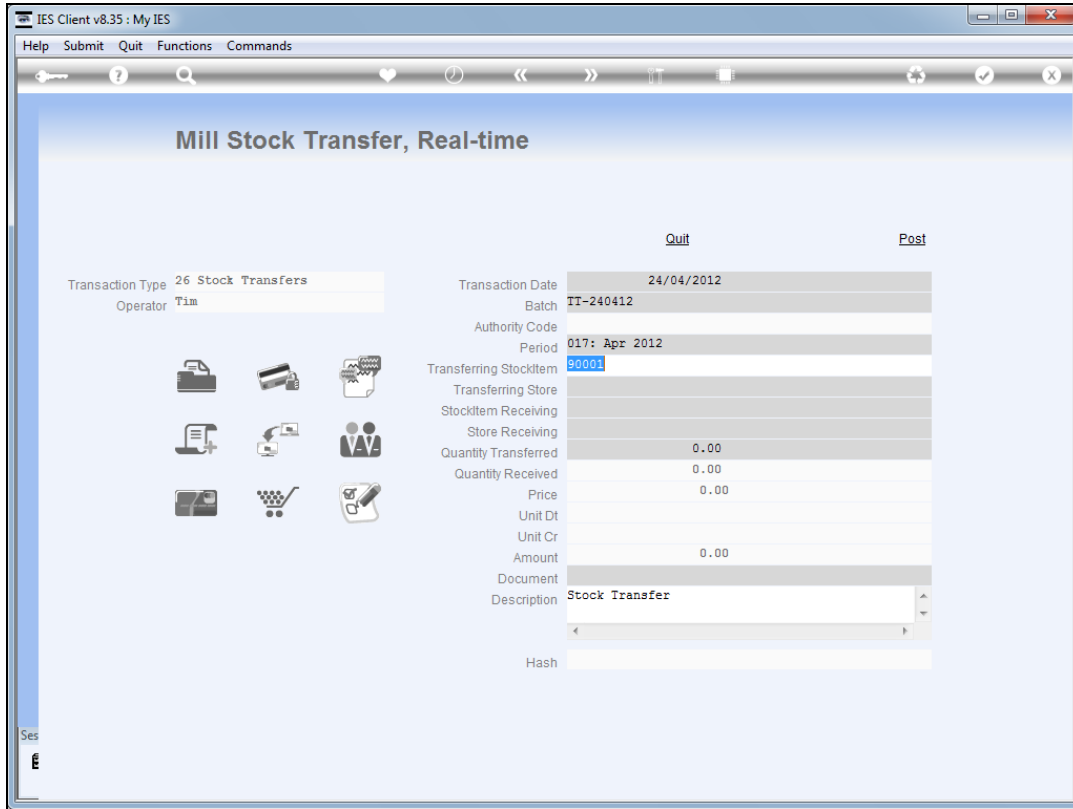
Slide 3
Slide notes:



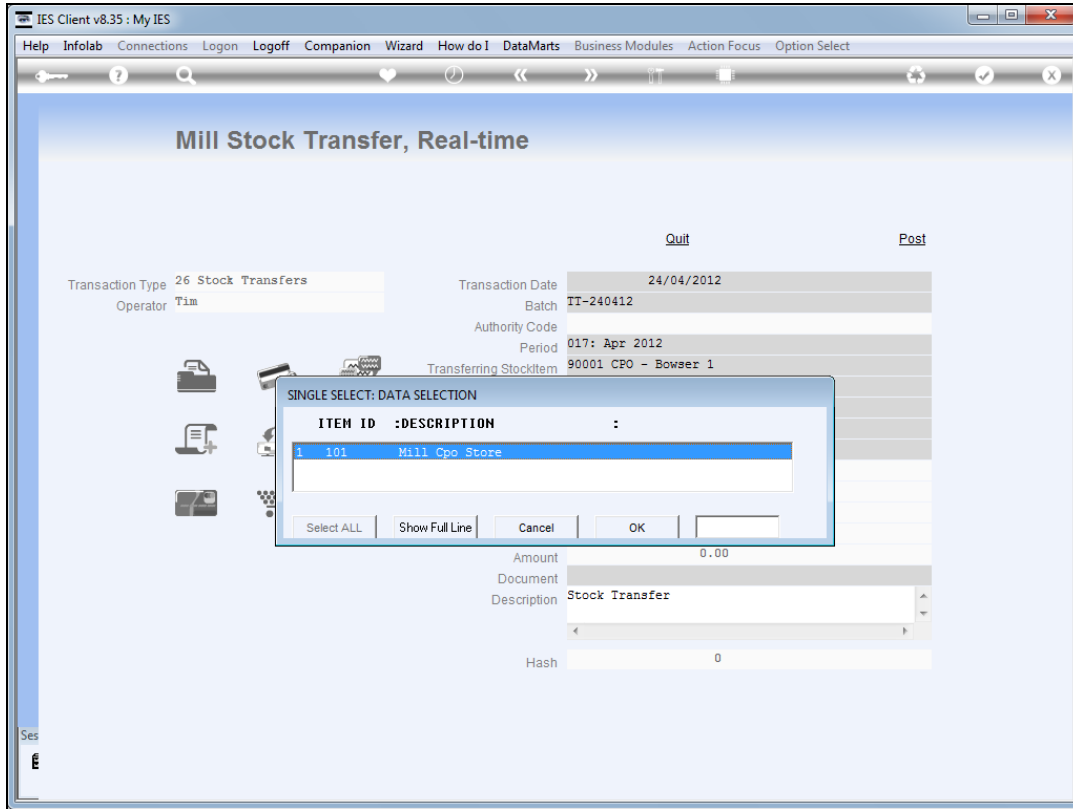
Slide 4
Slide notes:



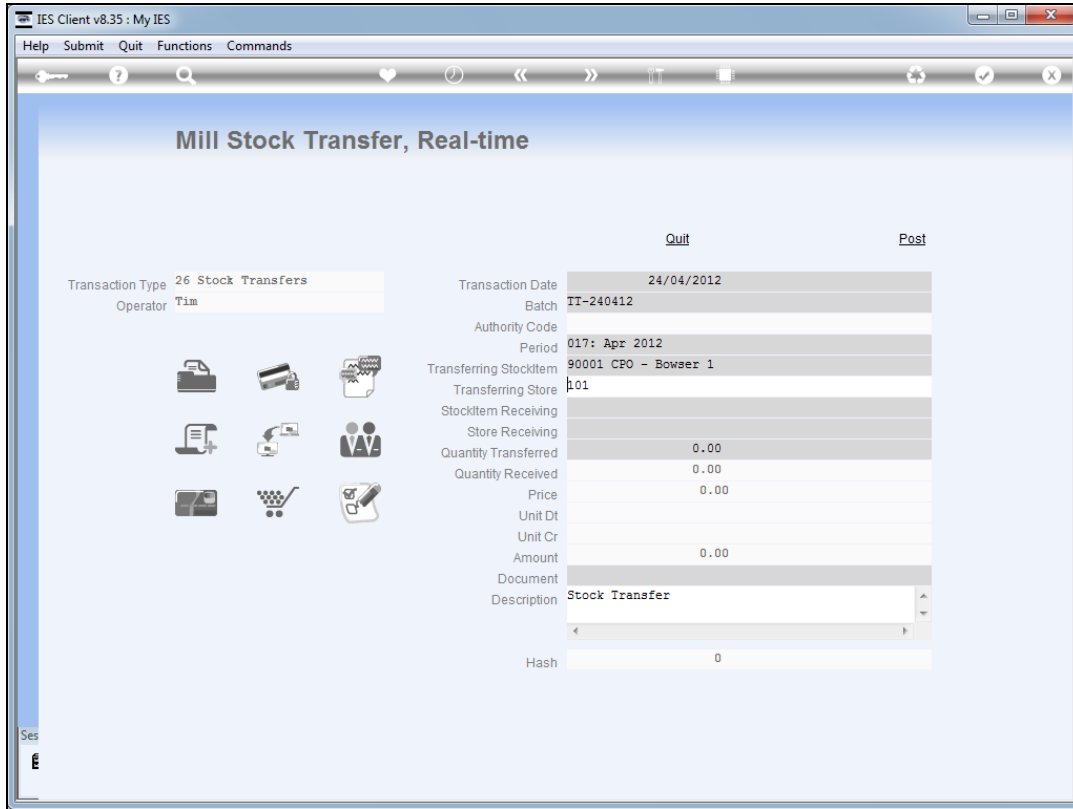
Slide 5
Slide notes:



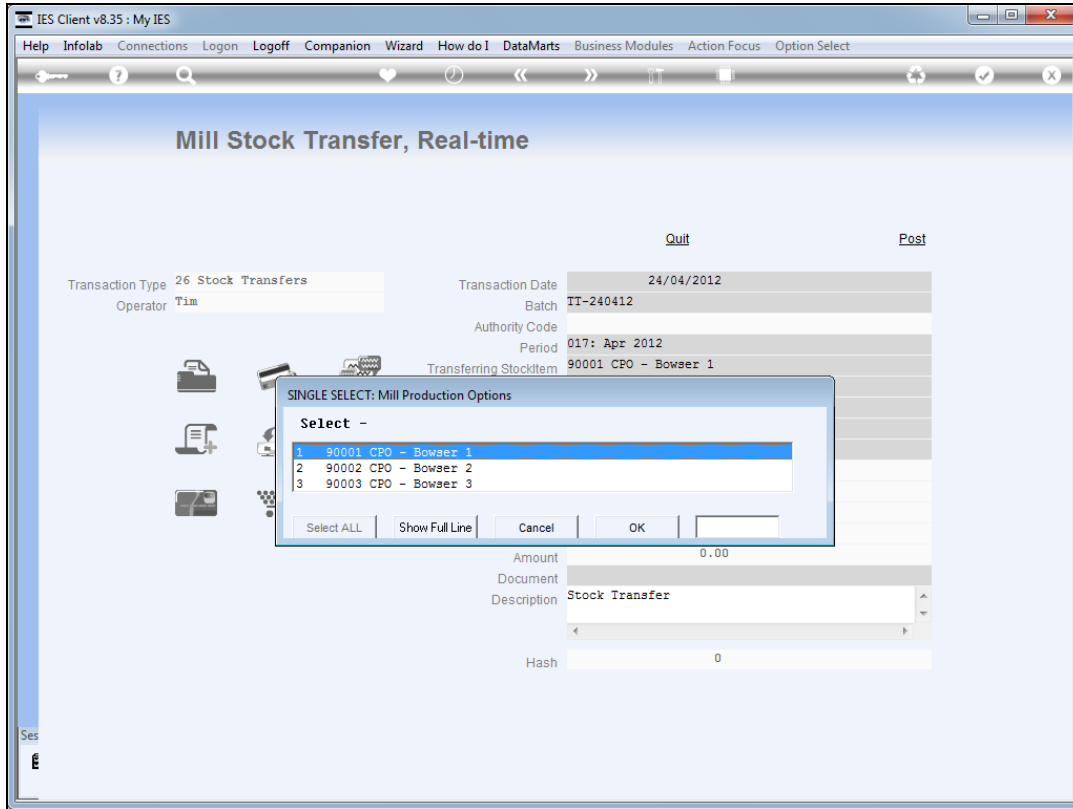
Slide 6
Slide notes:



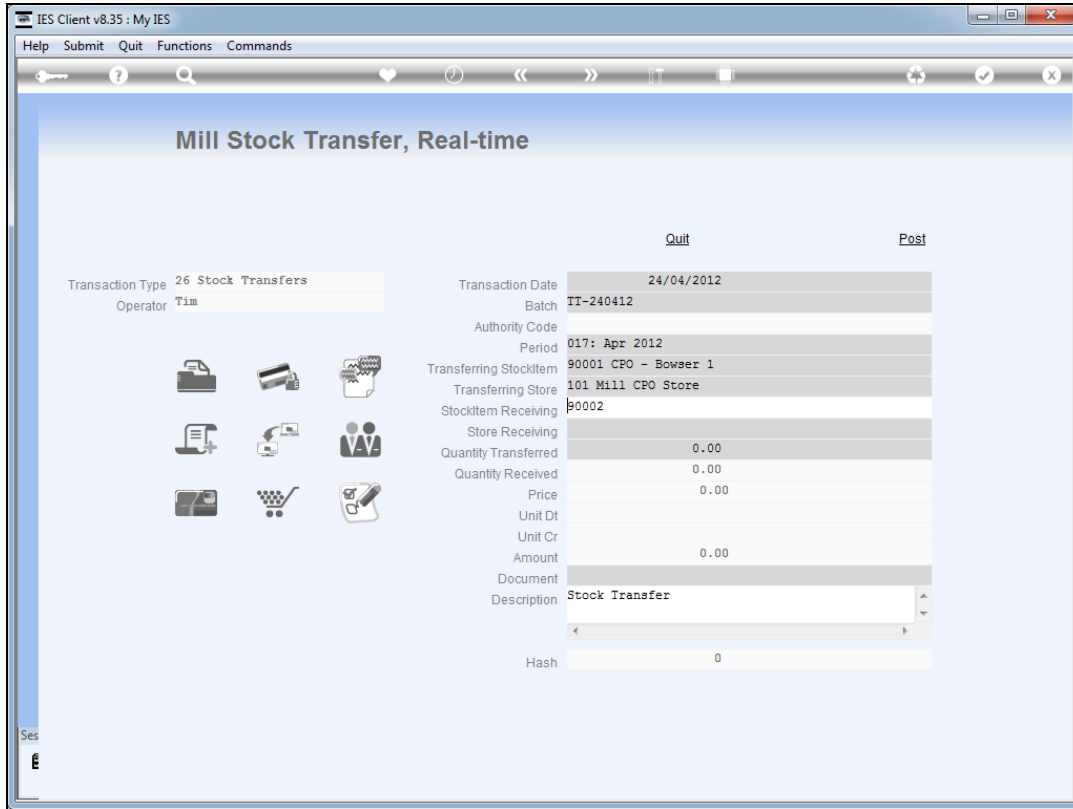
Slide 7
Slide notes:



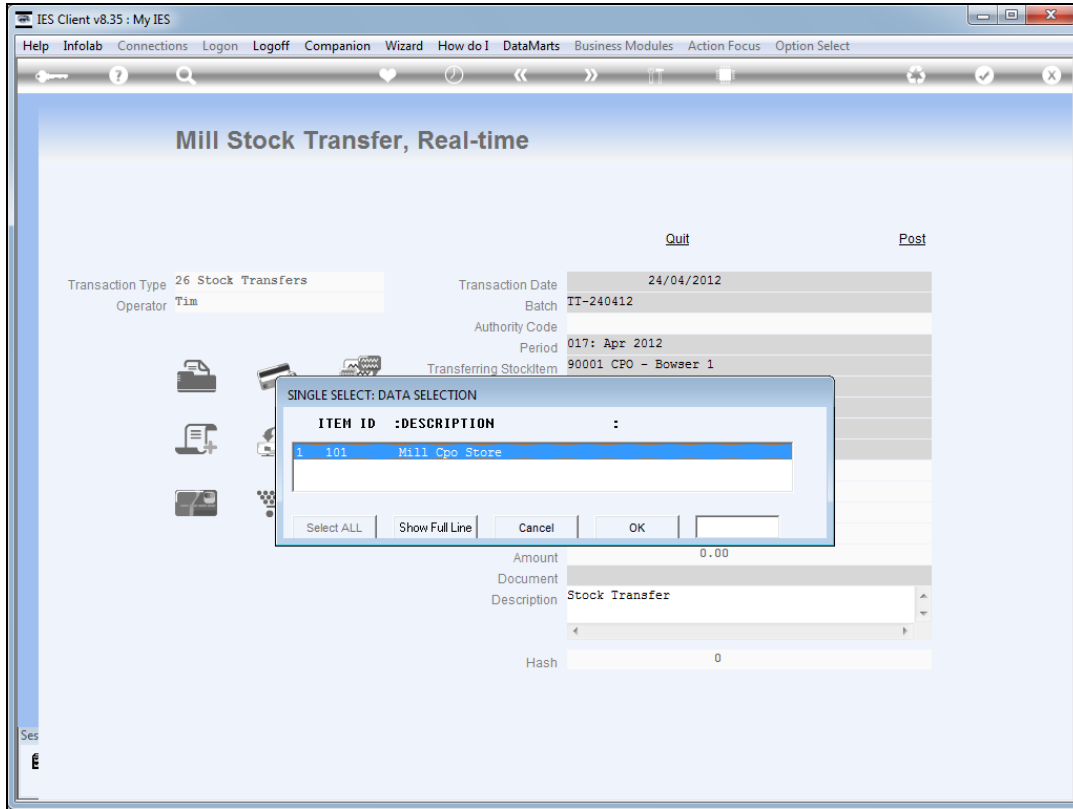
Slide 8
Slide notes:



Slide 9
Slide notes:



Slide 10
Slide notes:



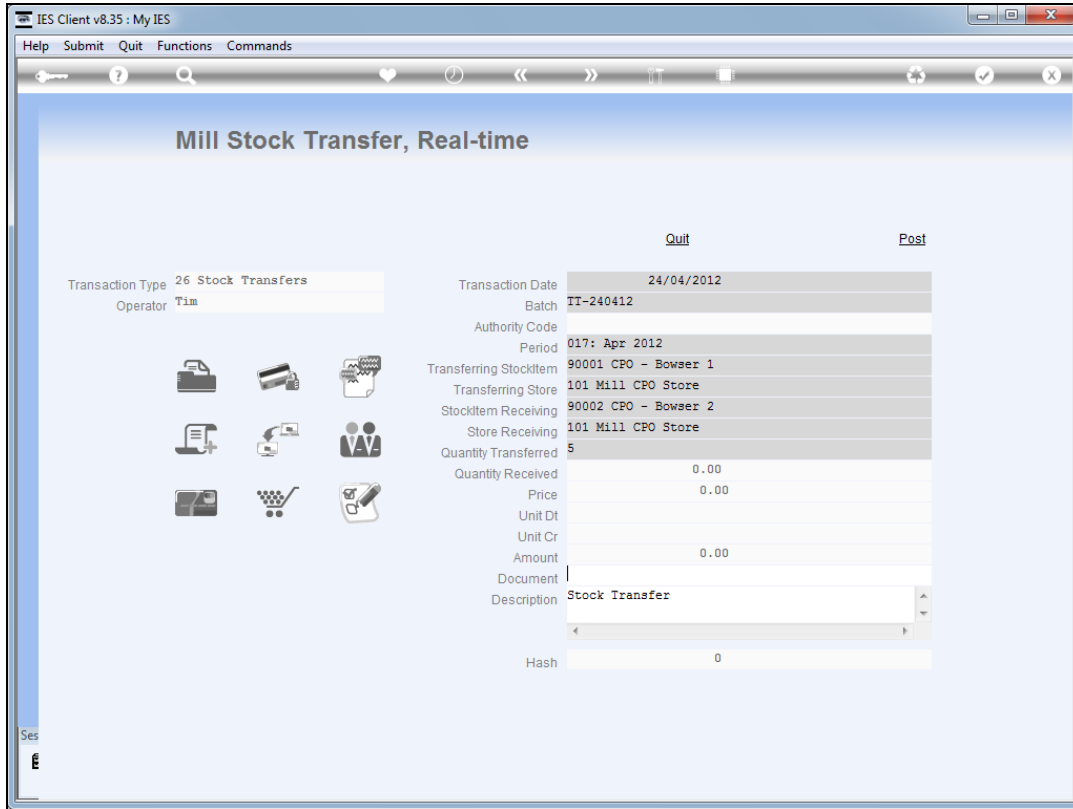
Slide 11
Slide notes:

The screenshot shows a web application window titled "IES Client v8.35 : My IES". The main content area is titled "Mill Stock Transfer, Real-time". On the left, there is a sidebar with a grid of icons representing various functions. The main area displays transaction details for a "Stock Transfer".

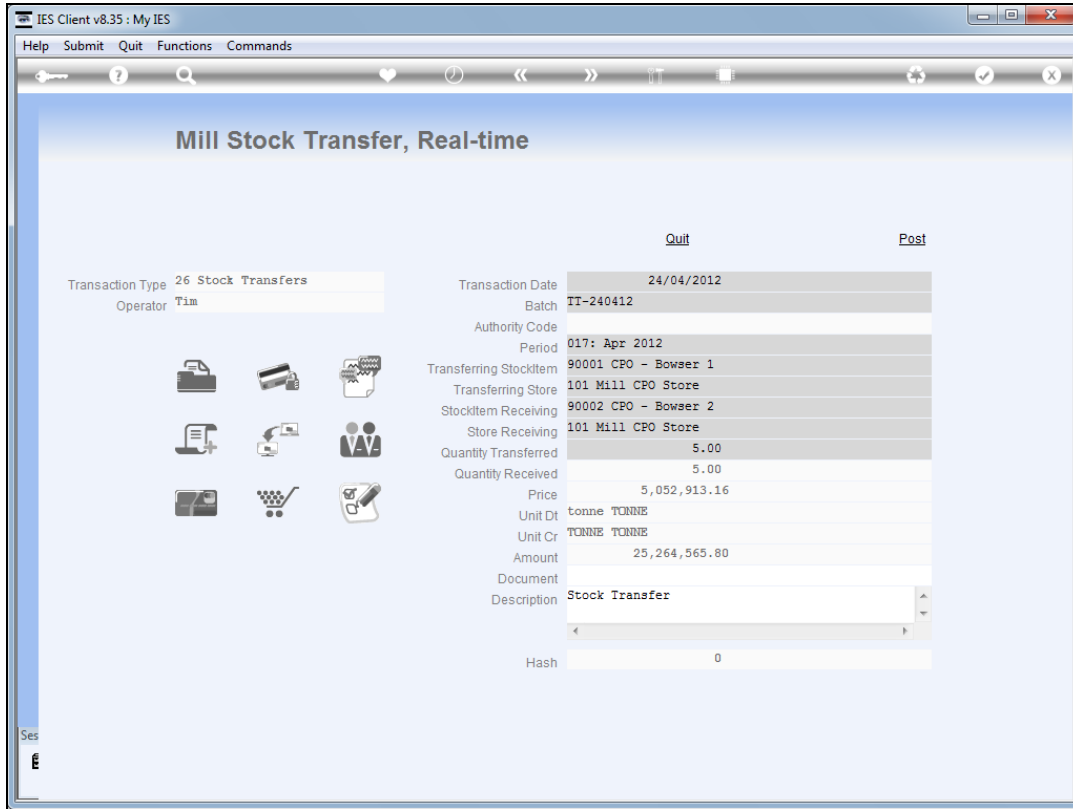
Transaction Type: 26 Stock Transfers
Operator: Tim

Transaction Date: 24/04/2012
Batch: TI-240412
Authority Code: [blank]
Period: 017: Apr 2012
Transferring StockItem: 90001 CPO - Bowser 1
Transferring Store: 101 Mill CPO Store
StockItem Receiving: 90002 CPO - Bowser 2
Store Receiving: 101
Quantity Transferred: 0.00
Quantity Received: 0.00
Price: 0.00
Unit Dt: [blank]
Unit Cr: [blank]
Amount: 0.00
Document: [blank]
Description: Stock Transfer
Hash: 0

Slide 12
Slide notes:

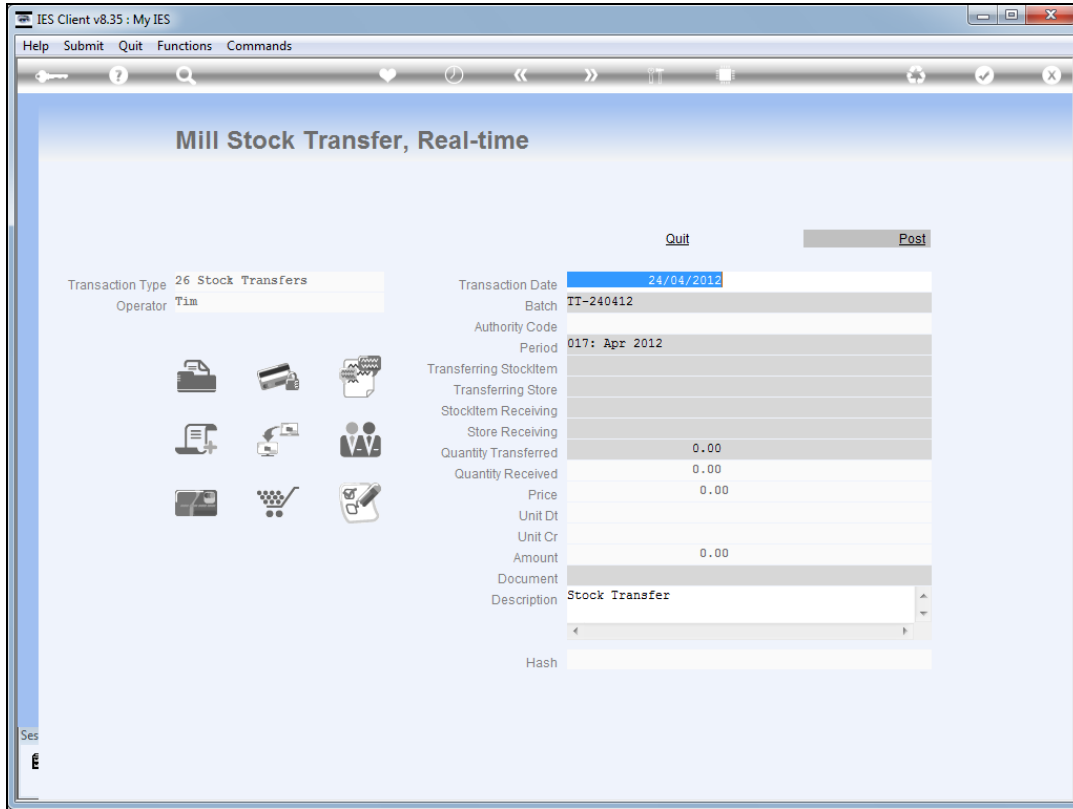


Slide 13
Slide notes:



Slide 14

Slide notes: In this example we are moving some CPO from one Storage Tank to another.



Slide 15
Slide notes: