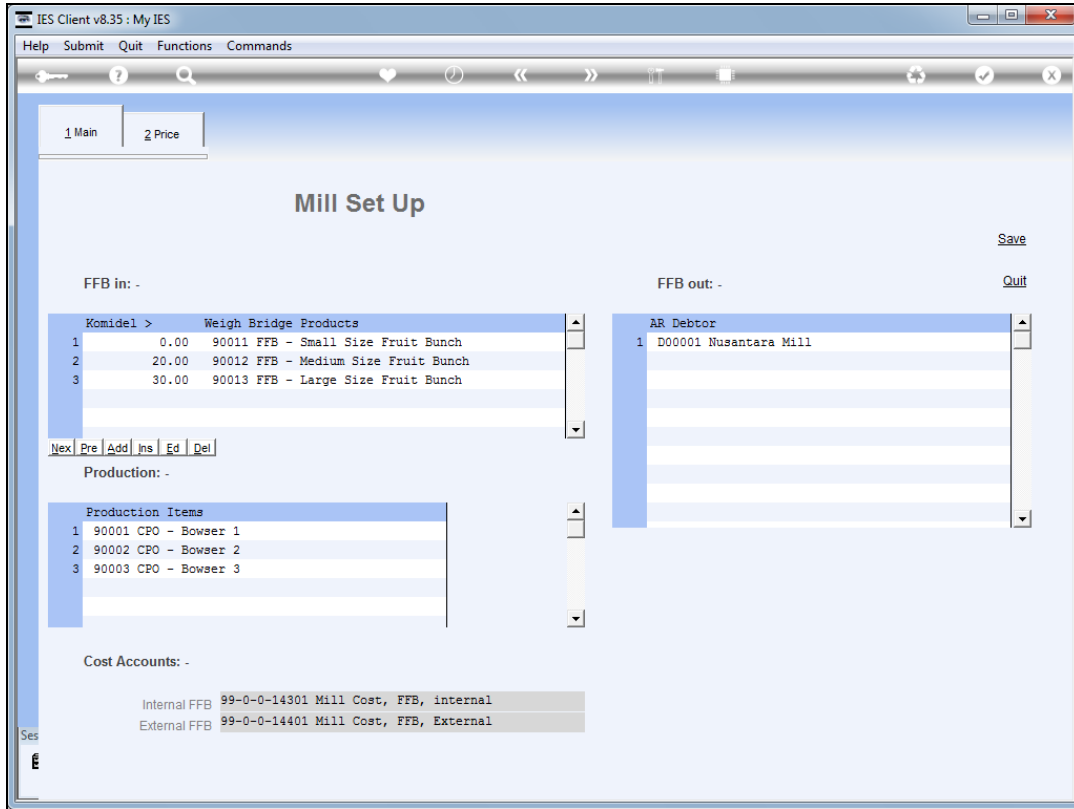
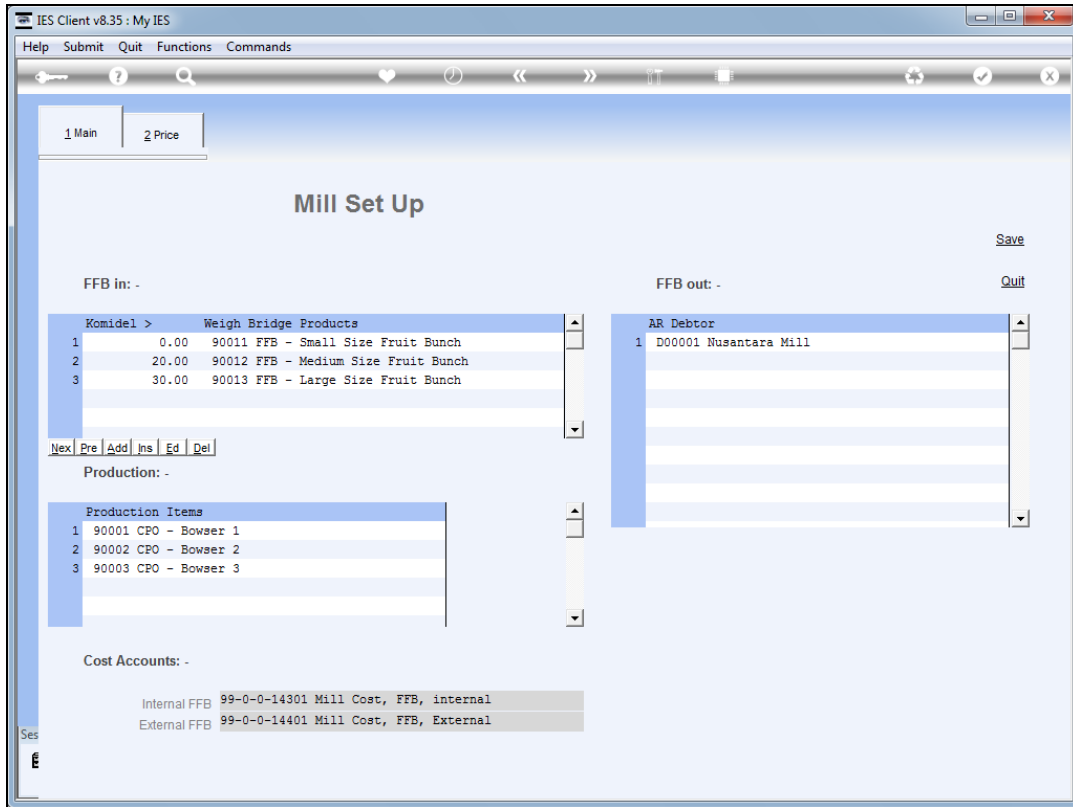


Slide 1

Slide notes: The Mill Setup Parameters are required for processing of FFB Tickets, whether supplied internally or externally, and whether we operate a Mill or not.

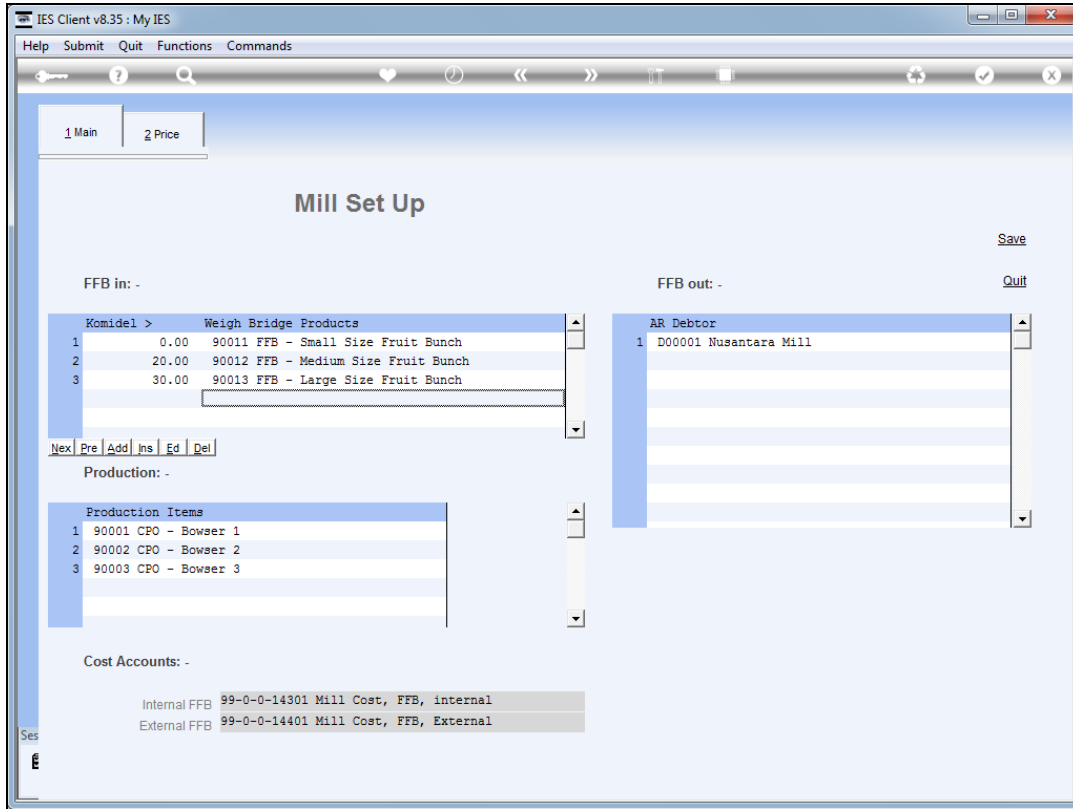


Slide 2  
Slide notes:



Slide 3

Slide notes: The FFB product classifications must be listed by the Komidel range, i.e. the weight of an average Fresh Fruit Bunch in kilograms. The FFB Codes have to be defined as Stock Codes, even though they are not transacted for Stock purposes. The Stock Codes may be defined in any Store, but the recommendation is to only include them in the Mill CPO Store.



Slide 4

Slide notes: The Production Items are only listed if there is a Mill in this Business, that produces CPO. In this case, we need to list the available Stock Codes for CPO, and these Stock Codes are recommended to appear only in the Mill CPO Store, where they are transacted as Stock Codes.

IES Client v8.35 : My IES

Help Submit Quit Functions Commands

1 Main 2 Price

### Mill Set Up

Save

FFB in: -

Komidel >	Weigh Bridge	Products
1	0.00	90011 FFB - Small Size Fruit Bunch
2	20.00	90012 FFB - Medium Size Fruit Bunch
3	30.00	90013 FFB - Large Size Fruit Bunch

FFB out: -

Quit

AR Debtor

1	D00001 Nusantara Mill
---	-----------------------

Production: -

Production Items

1	90001 CPO - Bowser 1
2	90002 CPO - Bowser 2
3	90003 CPO - Bowser 3

Next Pre Add Ins Ed Del

Cost Accounts: -

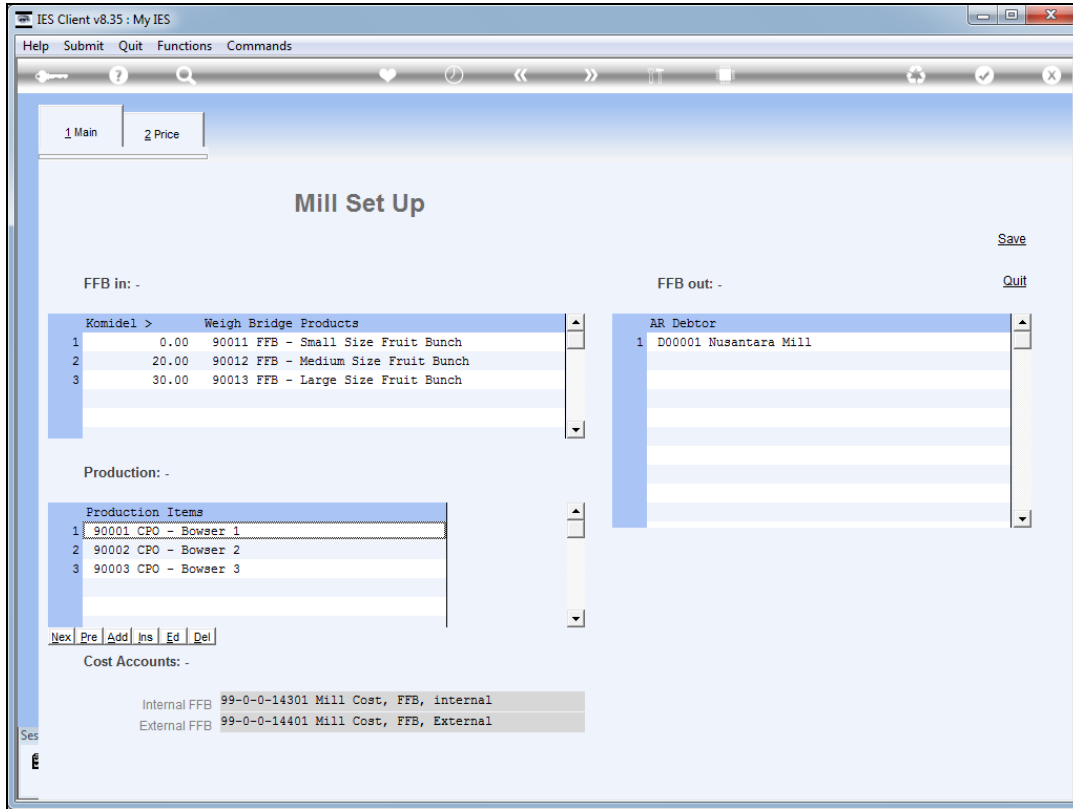
Internal FFB 99-0-0-14301 Mill Cost, FFB, internal

External FFB 99-0-0-14401 Mill Cost, FFB, External

Ses

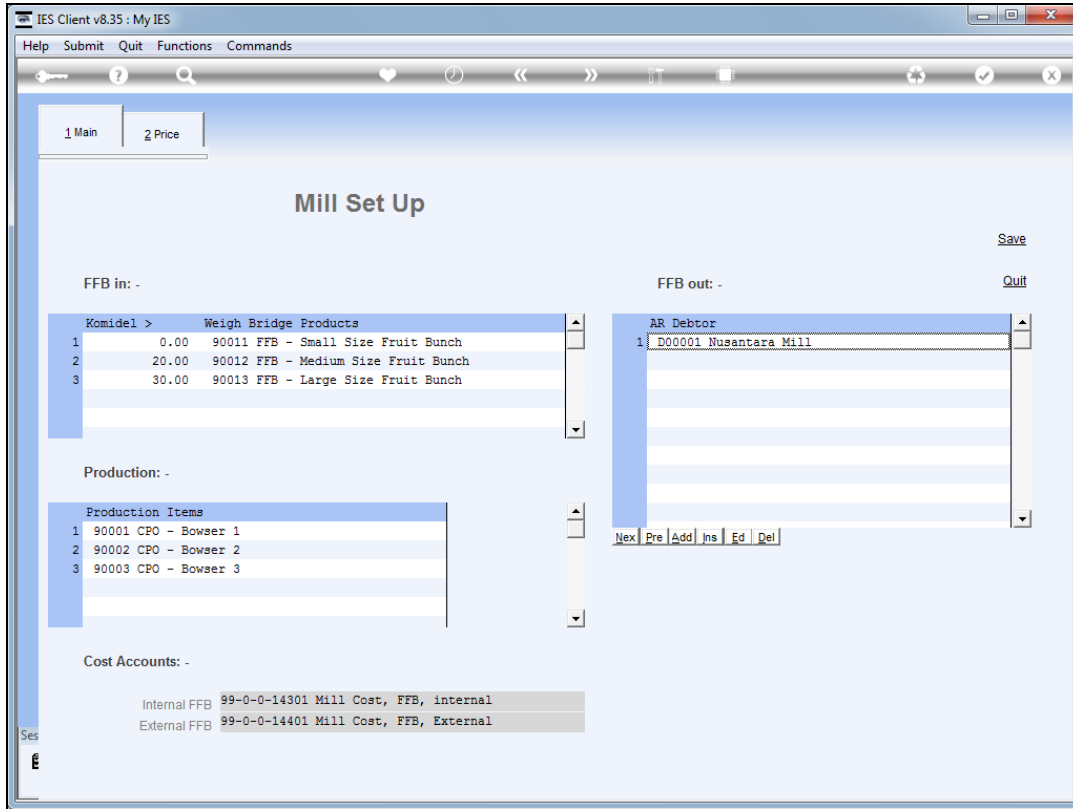
#### Slide 5

Slide notes: The Mill Costing Accounts are mandatory only if there is a Mill in this Business, and they can be separate Accounts for internal and external FFB, or else the same Account can be used for both. These Costing accounts are charged with the cost of FFB delivered to the Weighbridge, if there is a Mill in this Business.

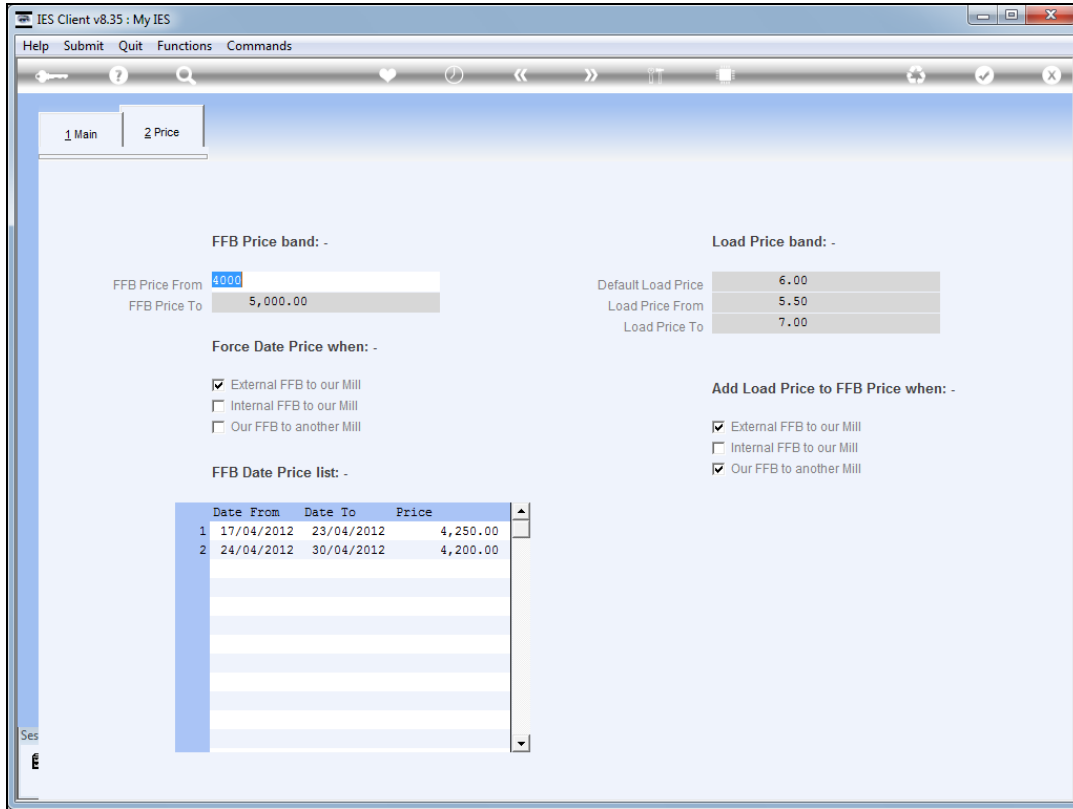


Slide 6

Slide notes: At FFB Out we may list 1 or more Debtor Accounts for other Mills where we supply our FFB to. We only specify this if we deliver FFB out to other Mills.



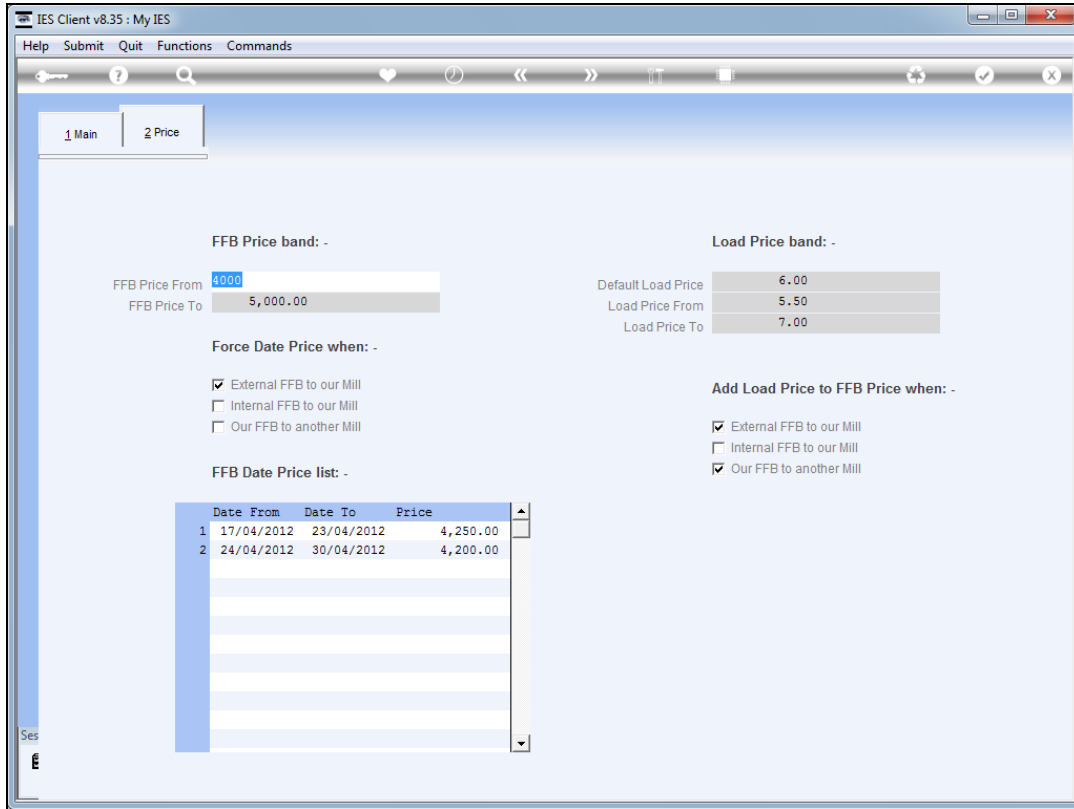
Slide 7  
Slide notes:



Slide 8

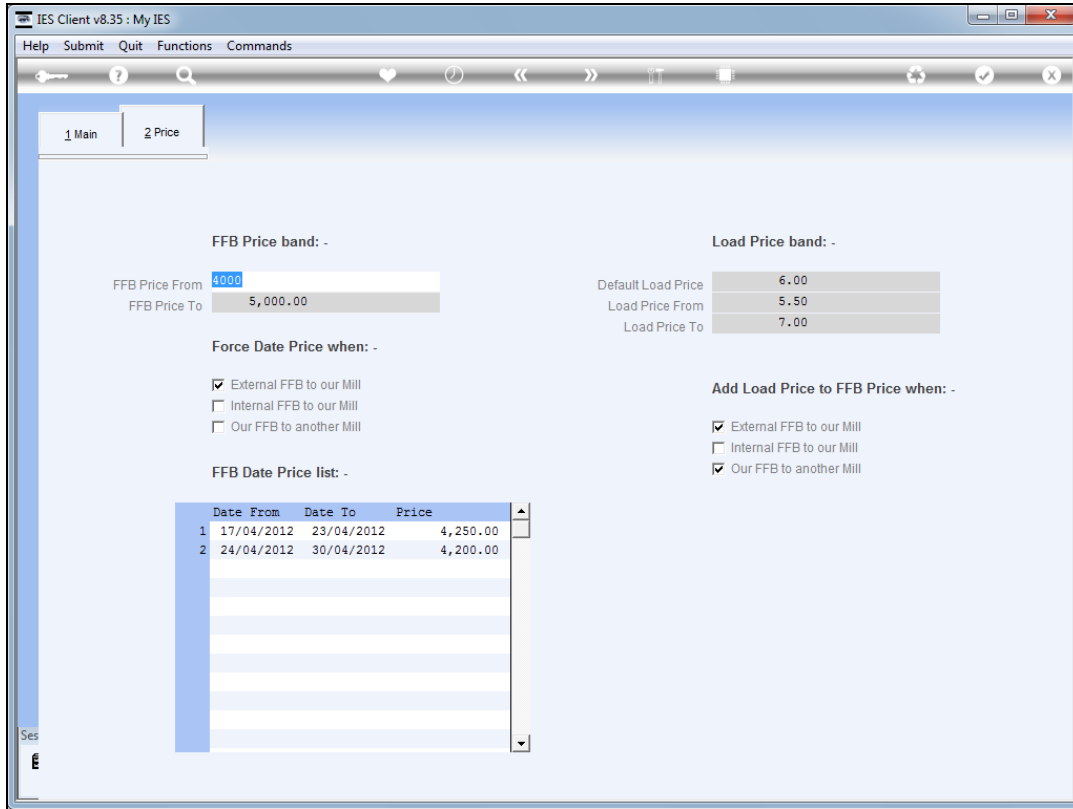
Slide notes: The FFB price band determines the lower and upper limits of FFB Price that may be processed on Tickets and that may be listed in the Date Price band.





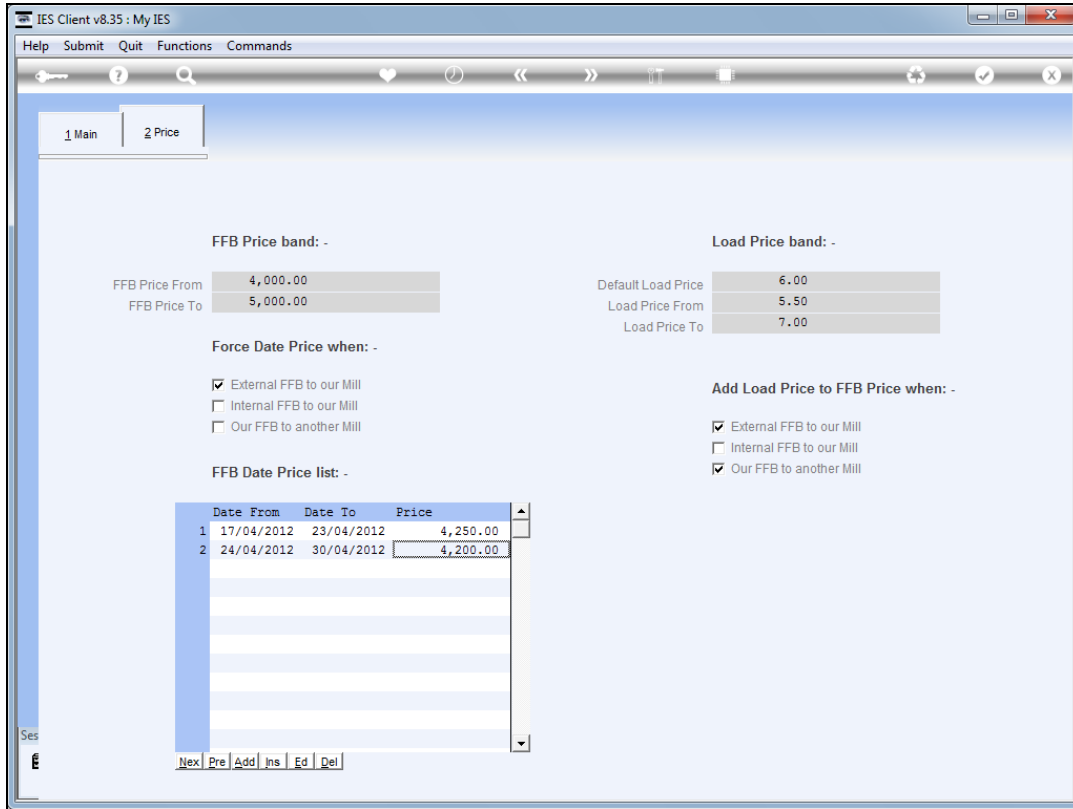
Slide 9

Slide notes: The Date Price may be forced for any of the 3 primary FFB types, i.e. internal, external and internal out. When the Date Price is not forced for a type, then the Price may be changed from the default for any Ticket, as long as it fits within the allowed band.



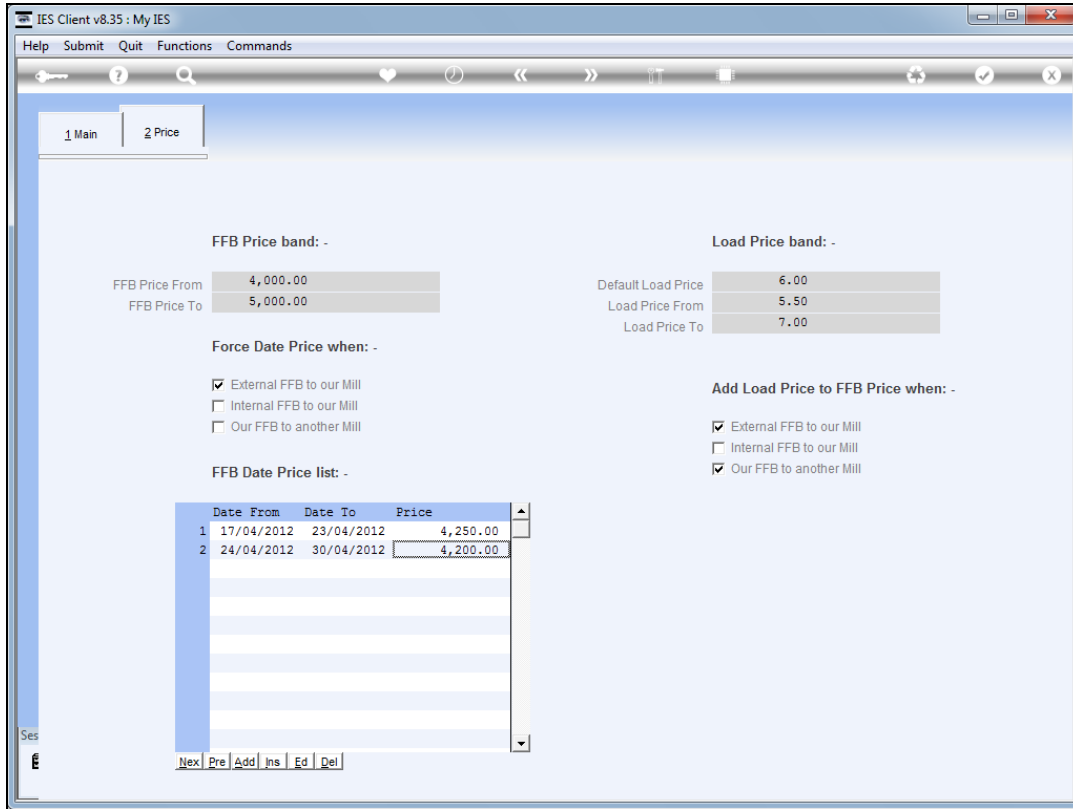
Slide 10

Slide notes: The Date Price band typically indicates a price for the current week, for Tickets to be processed in this Date Range, by Ticket Date. Multiple Date Ranges may be present, but the system will use the 1st range from the top where the Ticket Date fits. It is recommended that old Date Ranges for prior Tickets be removed when the Dates are past.



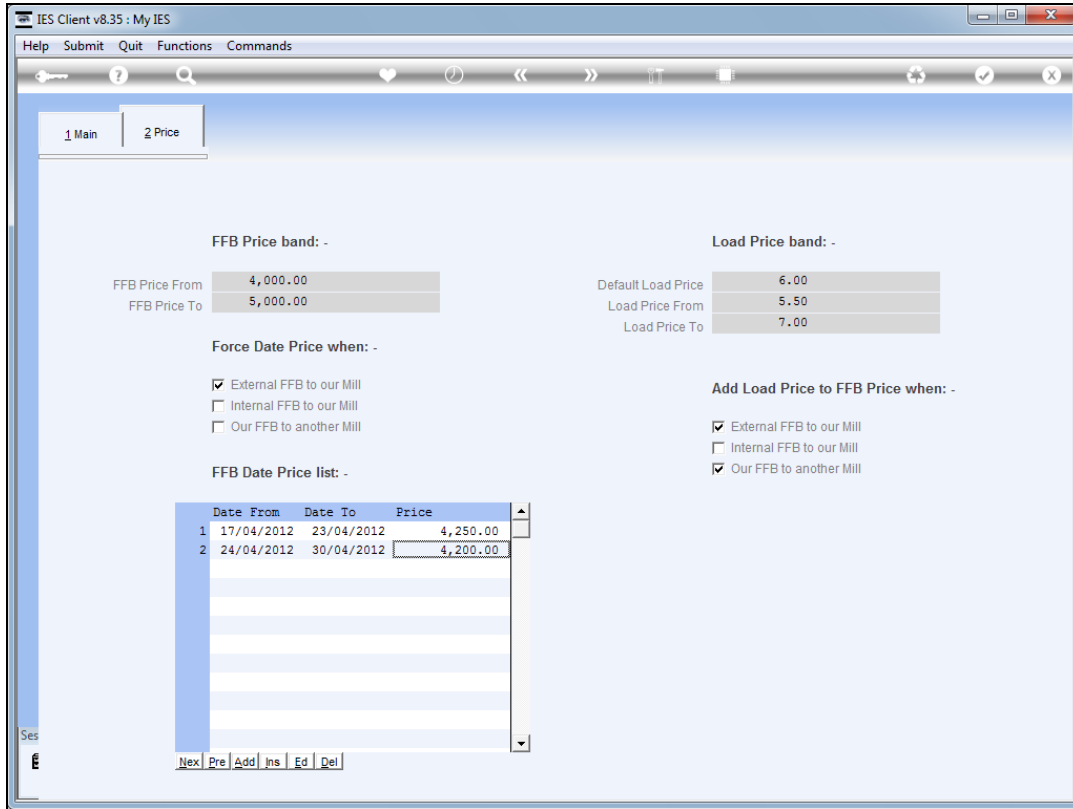
Slide 11

Slide notes: The Load Price band, similar to the Price band, determines the lower and upper limits allowed for Load Price on the Tickets being processed, and the default Load Price must also fit within this band.



Slide 12

Slide notes: The Load Price may be excluded from, or included with the FFB price when the cost is calculated, depending on the type, i.e. internal, external or internal out.



Slide 13  
Slide notes: