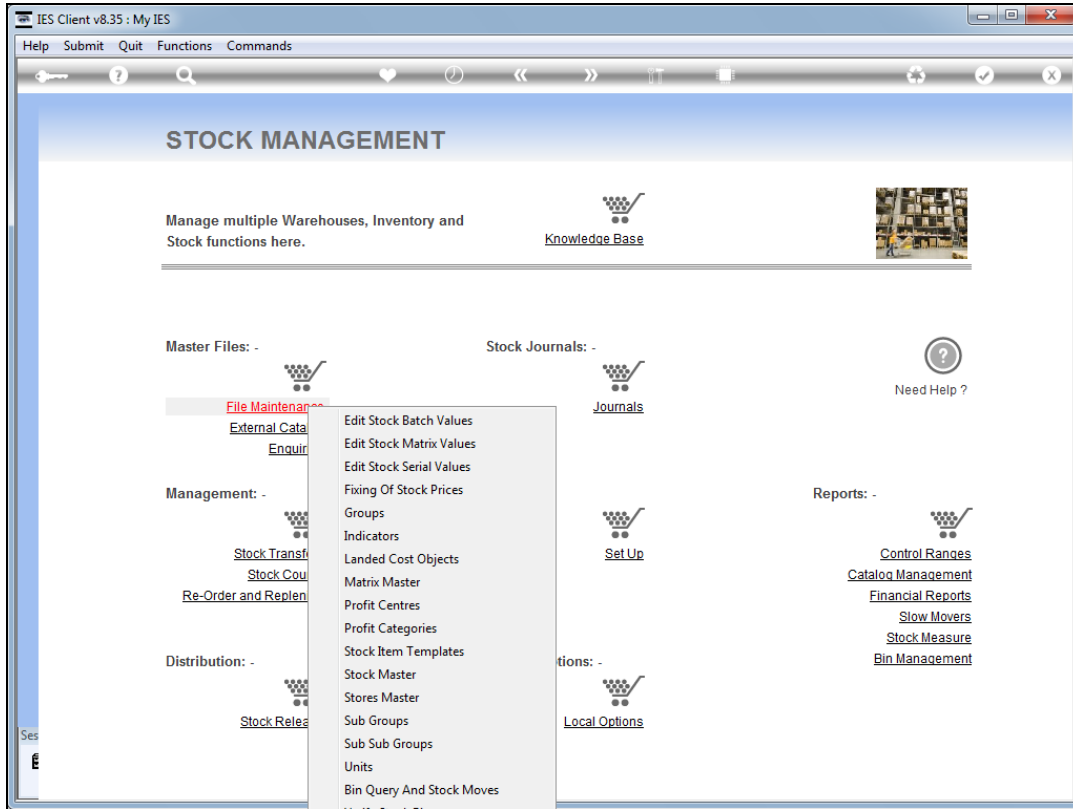
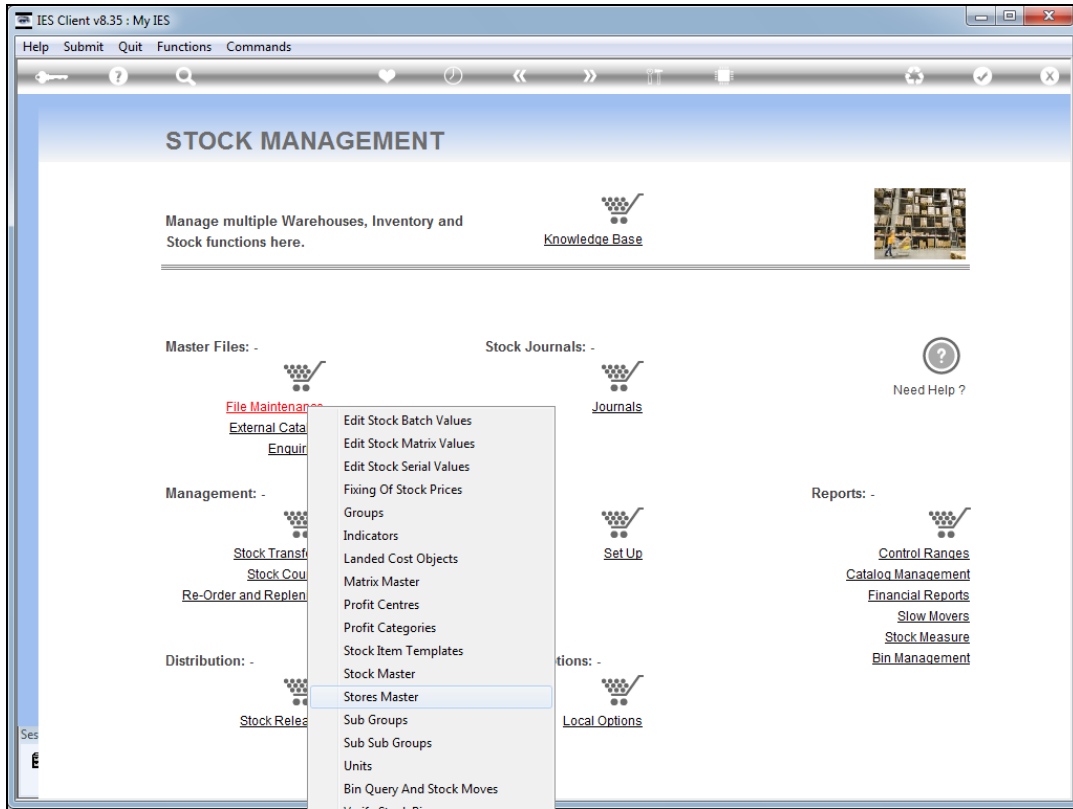


Slide 1

Slide notes: The Mill CPO Store is established only if we have a Mill in this Business.



Slide 2
Slide notes:



Slide 3
Slide notes:

The screenshot shows a web browser window titled "IES Client v8.35 : My IES". The browser's address bar and menu bar are visible. The main content area displays a form titled "Store / Warehouse Master".

The form contains the following fields and options:

- Store Number:
- Description:
- Control Acct:
- Populate Store: [Populate Store](#)
- Save: [Save](#)
- Store Replenishment Management: -
 - : Retail Store ?
 - : Warehouse ?
- Special Purpose Stores: -
 - Profit Object:
 - Profit Object is only required for Special Purpose Stores.
 - : Planned Maint Store ?
 - : Truck Store ?

In the bottom left corner of the browser window, there is a small "Ses" label and a logo.

Slide 4
Slide notes:

The screenshot shows a web browser window titled "IES Client v8.35 : My IES". The browser's address bar and menu bar are visible. The main content area displays a form titled "Store / Warehouse Master".

The form includes the following fields and options:

- Store Number: 101
- Description: [Empty text box]
- Control Acct: [Empty text box]
- Populate Store: [Link]
- Save: [Link]
- Store Replenishment Management: -
 - : Retail Store ?
 - : Warehouse ?
- Special Purpose Stores: -
 - Profit Object: [Empty text box]
 - Profit Object is only required for Special Purpose Stores.
 - : Planned Maint Store ?
 - : Truck Store ?

In the bottom left corner of the browser window, there is a small "Ses" label and a logo.

Slide 5
Slide notes:

IES Client v8.35 : My IES

Help Submit Quit Functions Commands

Store / Warehouse Master

Store Number: 101

Description: Mill CPO Store

Control Acct: 99-0-0-10030 Mill CPO Store

Populate Store

Save

Store Replenishment Management: -

: Retail Store ?

: Warehouse ?

Special Purpose Stores: -

Profit Object: _____

Profit Object is only required for Special Purpose Stores.

: Planned Maint Store ?

: Truck Store ?

Ses

Slide 6

Slide notes: The Mill CPO Store is a pseudo Store, housing any and all CPO Stock Codes at various storage points which may be geographically dispersed. In other words, all CPO bowzers or storage tanks, transit points at a Barge or other, are defined as Stock Codes for CPO in this Store, where the CPO Stock Codes may be transacted, Stock transferred, etc.