

The screenshot shows the 'Stock Master Record' form in the IES Client v8.35. The form is divided into several sections:

- Navigation:** 1 Main, 2 Ordering, 3 Stores, 4 Indicators, 5 Matrix.
- Stock Master Key:** 90001 (with a 'New Stock Code' link).
- Stock Account:** 90001.
- Description:** CPO - Browser 1.
- Transaction Status:** open.
- Catalog Group:** cpo Crude Palm Oil.
- Sub Group:** cpo Crude Palm Oil.
- Sub Sub Group:** cpo Crude Palm Oil.
- Master Bin:** 99 MILL.
- Department:** 2:iv90001.jpg.
- Visual Name:** 2:iv90001.jpg.
- Internal Unit:** TONNE TONNE.
- Unit Of Order:** 1 tonne TONNE.
- Settings:**
  - Obsolete, do not Order!
  - Attracts Import Duties ?
  - Taxable ?
  - Order From Any Supplier ?
- Stock Control:** 1: not required.
- Replenishment Formula:** (empty field).
- Last Formula Calc Management:** AVG.
- Auto Landed Cost Levy:** £.
- Indicator:** D.
- Negative Issue:** D.
- Last Upd By:** Tim.
- Last Upd:** 17/04/2012.

Slide 1

Slide notes: The Stock Items listed as Production Items on the Mill Setup Parameters must indeed be defined as Stock Items.

IES Client v8.35 : My IES

Help Submit Quit Functions Commands

1 Main 2 Ordering 3 Stores 4 Indicators 5 Matrix

### Stock Master Record

Save  
[Drill PO Costs](#)  
[Bin Update](#)

Stock Master Key: 90001 [New Stock Code](#)

Stock Account: 90001

Description: CPO - Bowser 1

Transaction Status: open

Catalog Group: cpo Crude Palm Oil

Sub Group: cpo Crude Palm Oil

Sub Sub Group: cpo Crude Palm Oil

Master Bin:

Department: 99 MILL

Visual Name: 2:iv90001.jpg

Internal Unit: TONNE TONNE

!Unit Of Order  
 1 tonne TONNE

Settings: -

Obsolete, do not Order!

Attracts Import Duties ?

Taxable ?

Order From Any Supplier ?

Stock Control: 1: not required

Replenishment Formula:

Last Formula Calc:

Management: AVG

Auto Landed Cost Levy:

Indicator: f

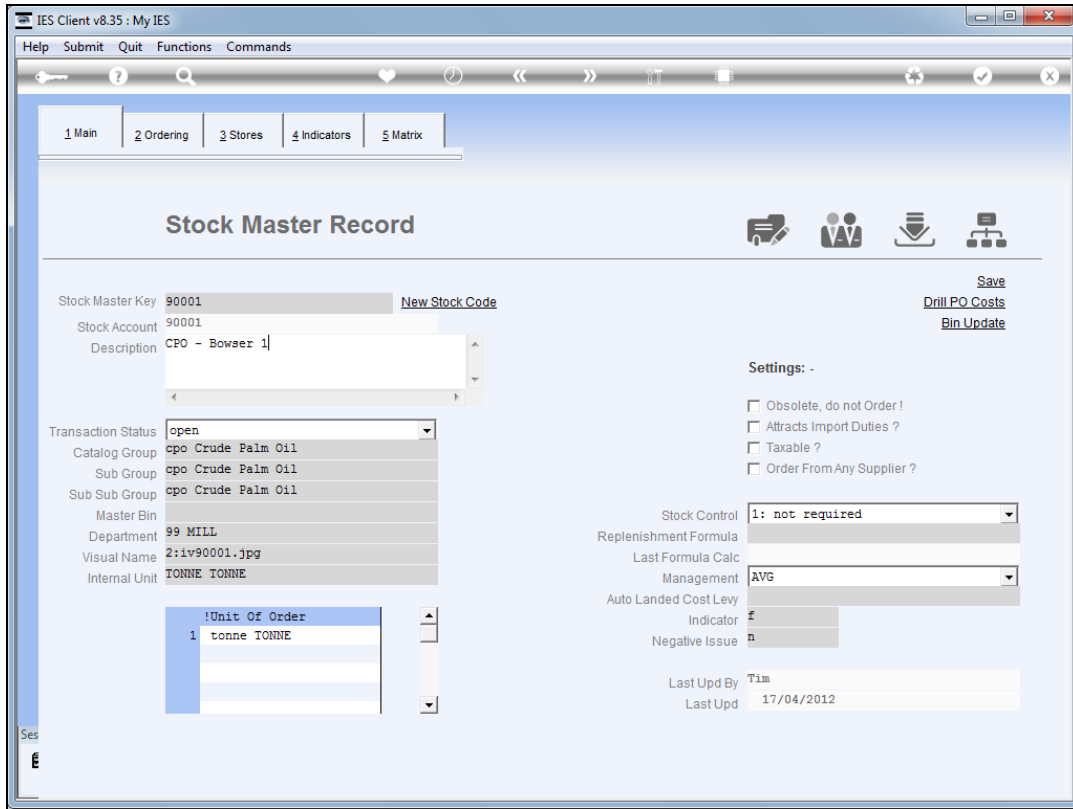
Negative Issue: n

Last Upd By: Tim

Last Upd: 17/04/2012

Slide 2

Slide notes: The grouping is flexible, but we suggest "CPO" as a grouping indicator.



Slide 3

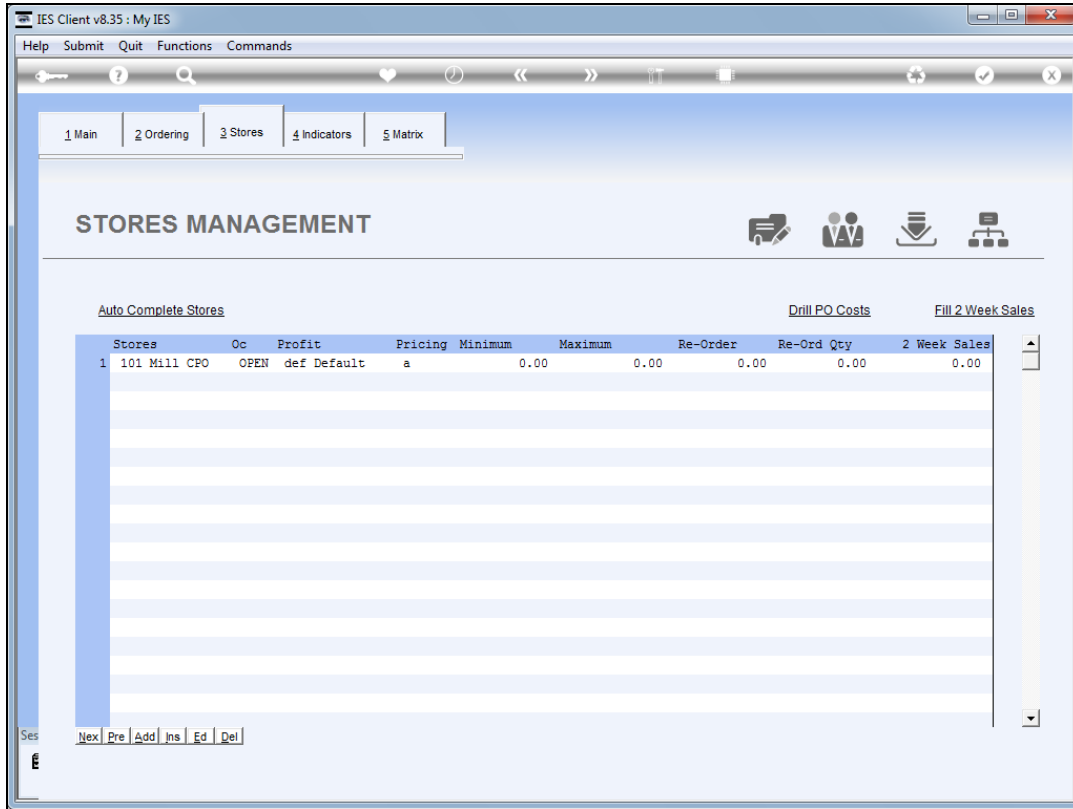
Slide notes: The unit of measurement is usually tonnes.

The screenshot shows the 'Stock Master Record' form in the IES Client v8.35. The window title is 'IES Client v8.35 : My IES'. The menu bar includes 'Help', 'Submit', 'Quit', 'Functions', and 'Commands'. The main content area has a navigation bar with '1 Main', '2 Ordering', '3 Stores', '4 Indicators', and '5 Matrix'. The title 'Stock Master Record' is centered at the top of the form area. Below the title are several icons: a printer, a group of people, a server, and a hierarchy diagram. The form is divided into several sections:

- Stock Master Key:** 90001 (with a 'New Stock Code' link).
- Stock Account:** 90001
- Description:** CPO - Bowser 1
- Transaction Status:** open
- Catalog Group:** cpo Crude Palm Oil
- Sub Group:** cpo Crude Palm Oil
- Sub Sub Group:** cpo Crude Palm Oil
- Master Bin:** (empty)
- Department:** 99 MILL
- Visual Name:** 2:iv90001.jpg
- Internal Unit:** TONNE TONNE
- !Unit Of Order:** 1 tonne TONNE
- Settings:**
  - Obsolete, do not Order !
  - Attracts Import Duties ?
  - Taxable ?
  - Order From Any Supplier ?
- Stock Control:** 1: not required
- Replenishment Formula:** (empty)
- Last Formula Calc:** (empty)
- Management:** AVG
- Auto Landed Cost Levy:** (empty)
- Indicator:** f
- Negative Issue:** n
- Last Upd By:** Tim
- Last Upd:** 17/04/2012

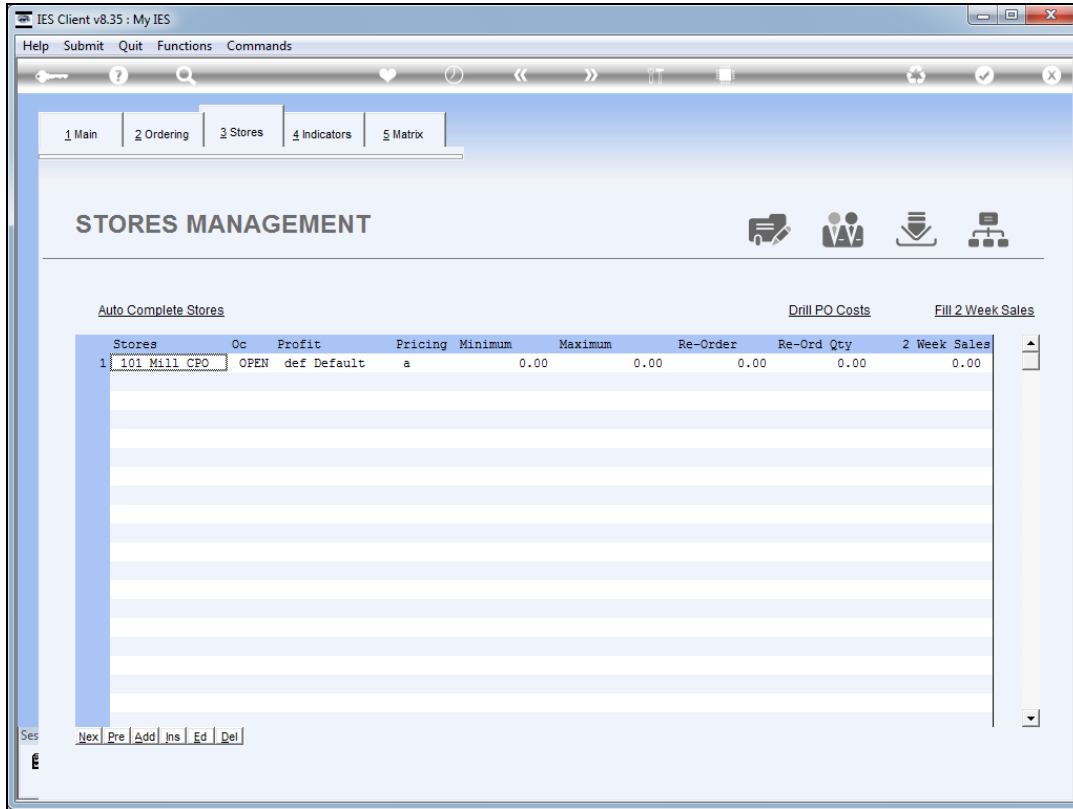
Buttons for 'Save', 'Drill PO Costs', and 'Bin Update' are located in the top right corner. A 'Ses' label is visible in the bottom left corner of the form area.

Slide 4  
Slide notes:

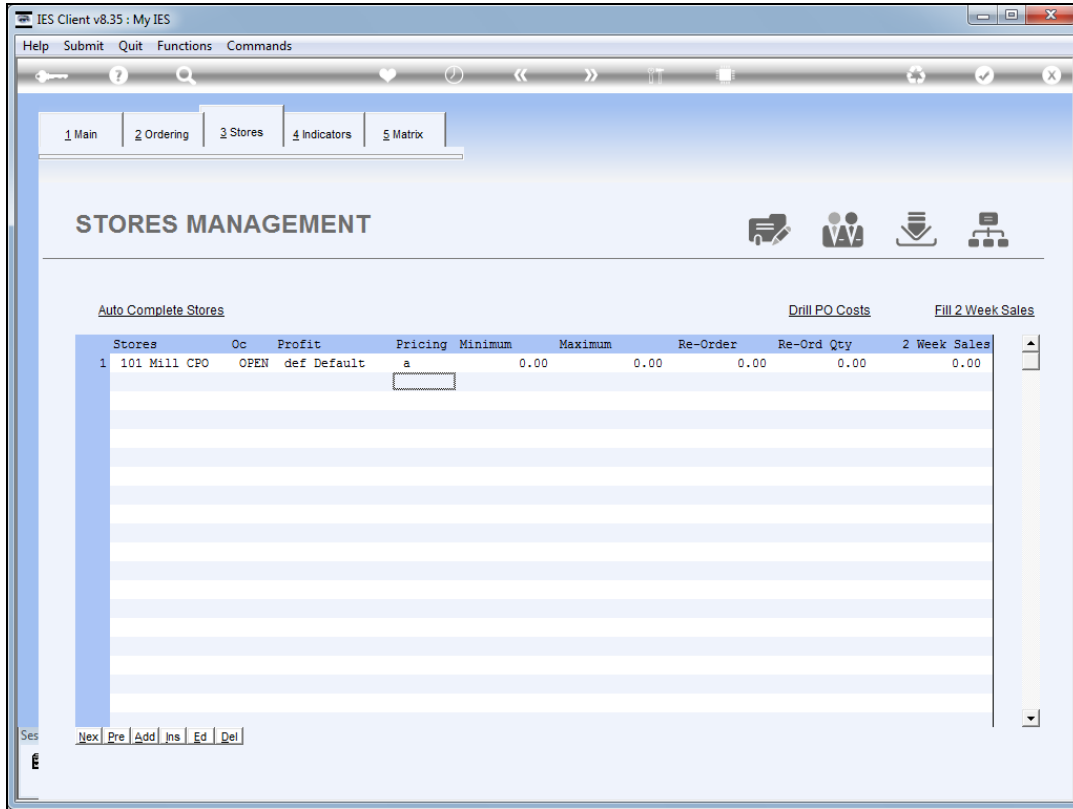


Slide 5

Slide notes: And we only define it in the Mill CPO Store, although if there is a need we can have it in multiple Stores.



Slide 6  
Slide notes:



Slide 7  
Slide notes:

IES Client v8.35 : My IES

Help Submit Quit Functions Commands

1 Main 2 Price 3 Stores

## RETAIL CATALOG

Catalog Key   
90001 Save

### 1 SETTINGS

Barcode Number   
Description   
Transaction Status   
 Non Returnable  Use Extended Tax Types

Tax Parameter   
Accounts Route   
Unit Of Sale   
BOM Item   
Sell Only in Kit

Last Upd By   
Last Upd

### 2 STOCK TRACKING

Batch Number  
 Serial Number  
 Matrix  
 None

### 3 CATALOG HIERARCHY

Group   
Sub Group   
Sub Sub Group   
Category

Slide 8

Slide notes: The Stock Items that we will sell from, will also be established at the Retail Catalog with the same code as the Stock Code.



IES Client v8.35 : My IES

Help Submit Quit Functions Commands

1 Main 2 Price 3 Stores

## RETAIL CATALOG

Catalog Key   
 Save

### 1 SETTINGS

Barcode Number

Description

Transaction Status

Non Returnable  Use Extended Tax Types

Tax Parameter

Accounts Route

Unit Of Sale

BOM Item

Sell Only in Kit

Last Upd By

Last Upd

### 2 STOCK TRACKING

Batch Number

Serial Number

Matrix

None

### 3 CATALOG HIERARCHY

Group

Sub Group

Sub Sub Group

Category

Slide 9  
Slide notes:

IES Client v8.35 : My IES

Help Submit Quit Functions Commands

1 Main 2 Price 3 Stores

### RETAIL CATALOG

Catalog Key 90001  
90001 Save

#### 1 SETTINGS

Barcode Number  
Description CPO - Bowser 1  
Transaction Status open  
 Non Returnable  Use Extended Tax Types

Tax Parameter 101 VAT OUI: VAT/PPN/GST/GCT  
Accounts Route cpo CPO Sales  
Unit Of Sale TONNE TONNE  
BOM Item  
Sell Only in Kit

Last Upd By  
Last Upd

#### 2 STOCK TRACKING

Batch Number  
 Serial Number  
 Matrix  
 None

#### 3 CATALOG HIERARCHY

Group 999 Any  
Sub Group 999 Any  
Sub Sub Group 999 Any  
Category not analysed

Slide 10

Slide notes: We will use a specific Accounts Route parameter that is set up for CPO Sales.

IES Client v8.35 : My IES

Help Submit Quit Functions Commands

1 Main 2 Price 3 Stores

### RETAIL CATALOG

Catalog Key 90001  
90001 Save

**1 SETTINGS**

Barcode Number  
Description CPO - Bowser 1  
Transaction Status open  
 Non Returnable  Use Extended Tax Types

Tax Parameter 101 VAI OUI: VAI/PPN/GST/GCT  
Accounts Route CPO  
Unit Of Sale TONNE TONNE  
BOM Item  
Sell Only in Kit

Last Upd By  
Last Upd

**2 STOCK TRACKING**

Batch Number  
 Serial Number  
 Matrix  
 None

**3 CATALOG HIERARCHY**

Group 999 Any  
Sub Group 999 Any  
Sub Sub Group 999 Any  
Category not analysed

Slide 11  
Slide notes:

IES Client v8.35 : My IES

Help Submit Quit Functions Commands

1 Main 2 Price 3 Stores

## RETAIL CATALOG

Catalog Key 90001  
90001 Save

### 1 SETTINGS

Barcode Number  
Description CPO - Bowser 1  
Transaction Status open  
 Non Returnable  Use Extended Tax Types

Tax Parameter 101 VAT OUI: VAT/PPN/GST/GCT  
Accounts Route cpo CPO Sales  
Unit Of Sale NONE  
BOM Item  
Sell Only in Kit

Last Upd By  
Last Upd

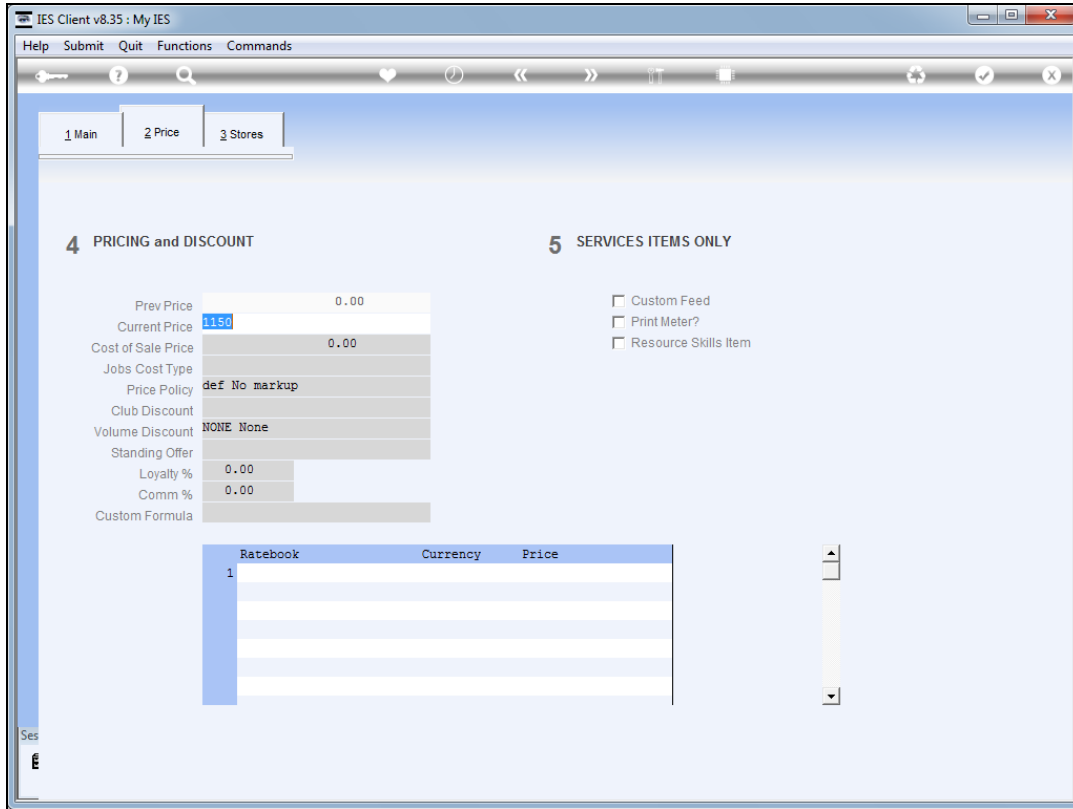
### 2 STOCK TRACKING

Batch Number  
 Serial Number  
 Matrix  
 None

### 3 CATALOG HIERARCHY

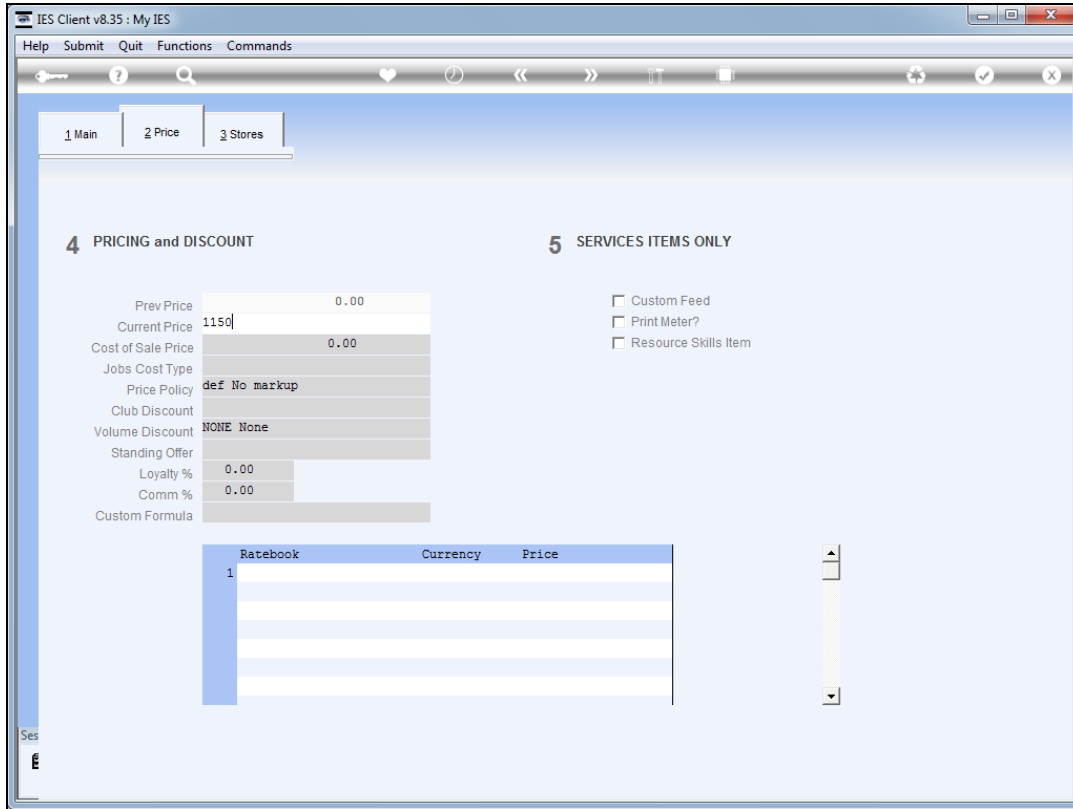
Group 999 Any  
Sub Group 999 Any  
Sub Sub Group 999 Any  
Category not analysed

Slide 12  
Slide notes:

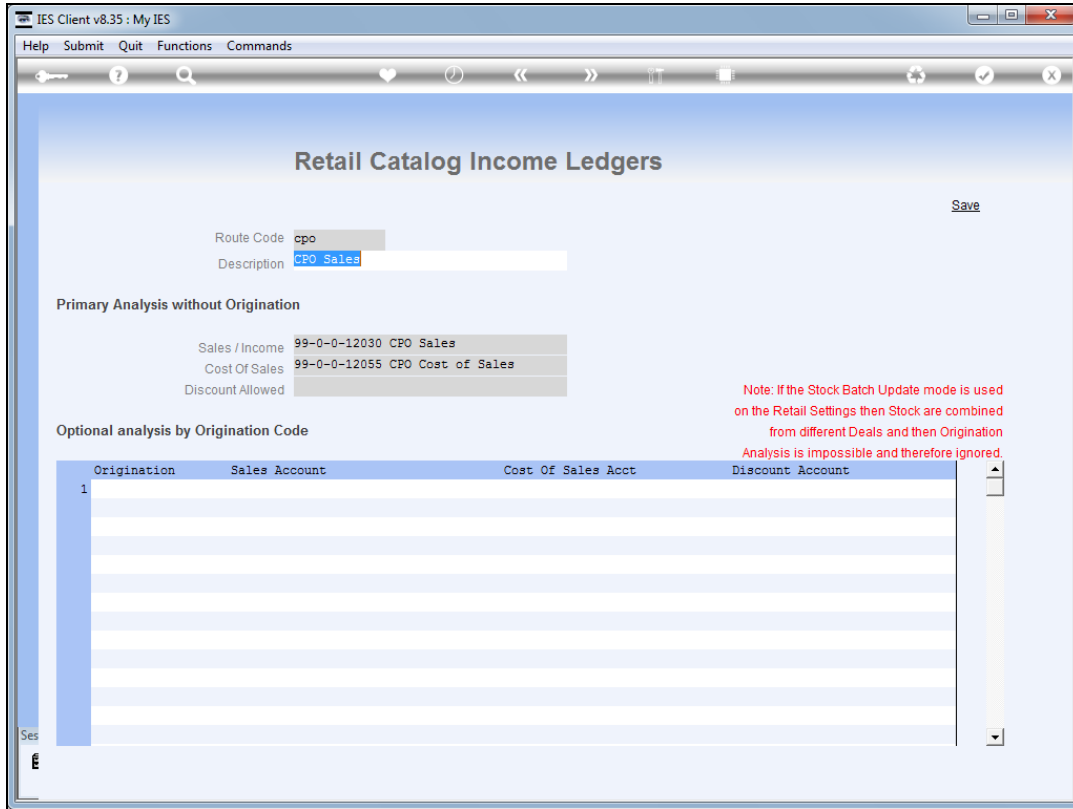


Slide 13

Slide notes: And we will update the current price from time to time, although we are able to vary the price on a Retail Invoice.

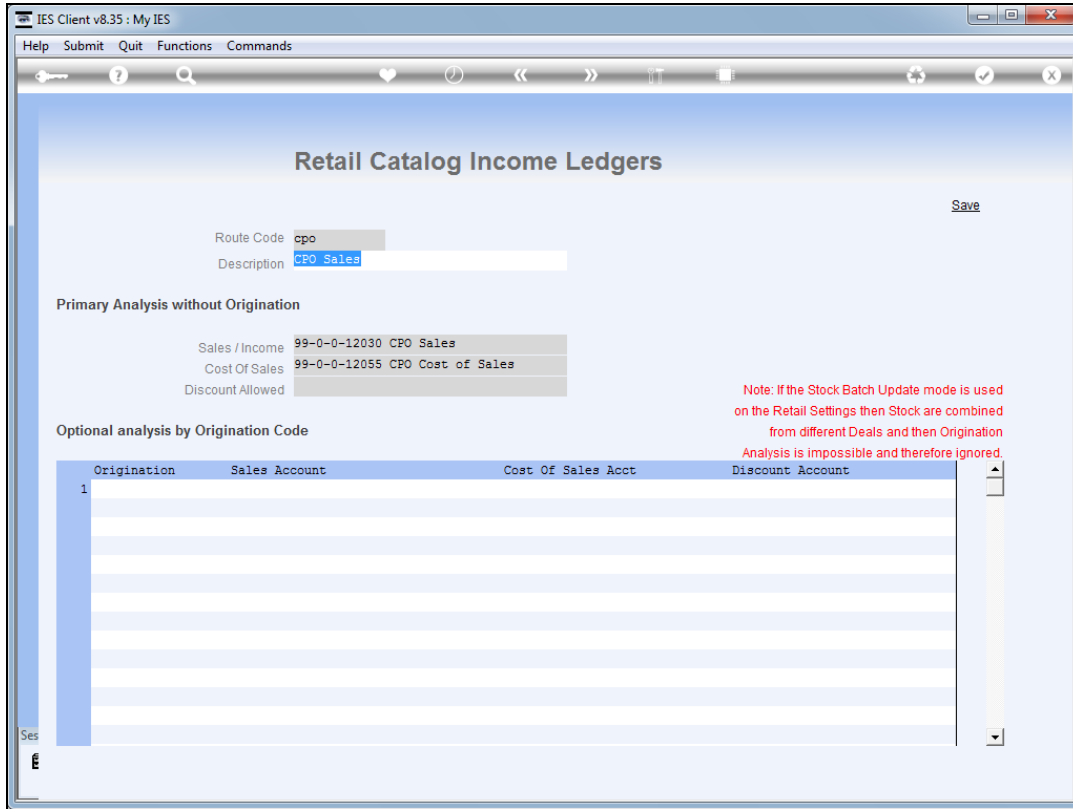


Slide 14  
Slide notes:



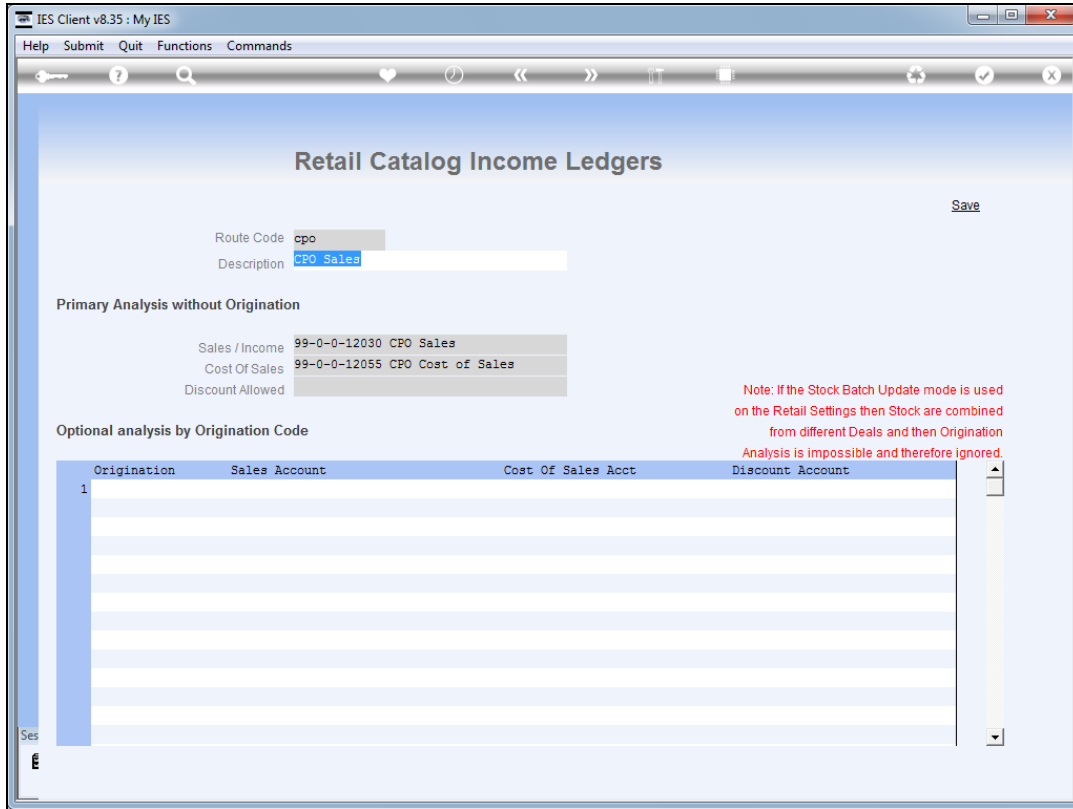
Slide 15

Slide notes: The Accounts Route parameter is set up for CPO Sales, listing the correct Accounts to use for Sales and Cost of Sales.

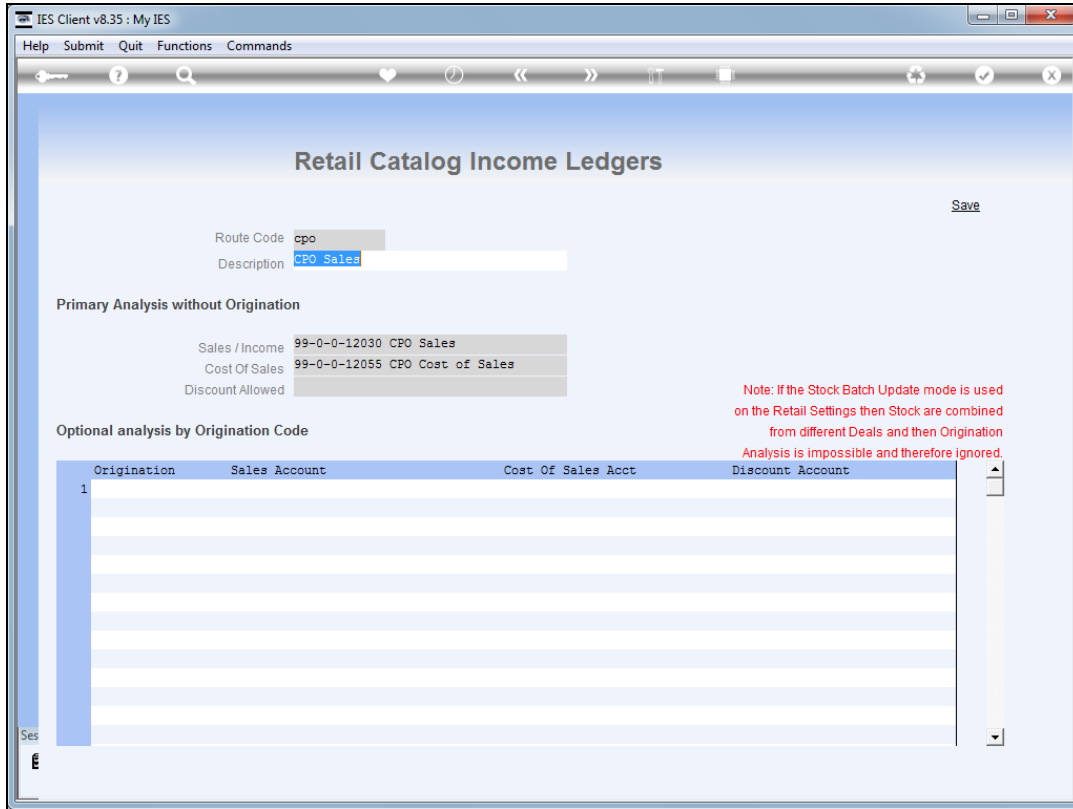


Slide 16  
Slide notes:





Slide 17  
Slide notes:



Slide 18  
Slide notes: