

IES Client v8.35 : My IES

Help Submit Quit Functions Commands

1 Main 2 Ordering 3 Stores 4 Indicators 5 Matrix

Stock Master Record

Stock Master Key: [New Stock Code](#)

Stock Account: 90013 [Save](#)

Description: FFB - Large Size Fruit Bunch [Drill PO Costs](#)

[Bin Update](#)

Transaction Status:

Catalog Group: ffb Fresh Fruit Bunch

Sub Group: ffb Fresh Fruit Bunch

Sub Sub Group: ffb Fresh Fruit Bunch

Master Bin: 99 MILL

Department: 2:iv90013.jpg

Visual Name: ea Each

Internal Unit: ea Each

!Unit Of Order

1	ea Each

Settings: -

Obsolete, do not Order!

Attracts Import Duties ?

Taxable ?

Order From Any Supplier ?

Stock Control:

Replenishment Formula:

Last Formula Calc Management:

Auto Landed Cost Levy:

Indicator:

Negative Issue:

Last Upd By:

Last Upd:

Ses

£

Slide 1

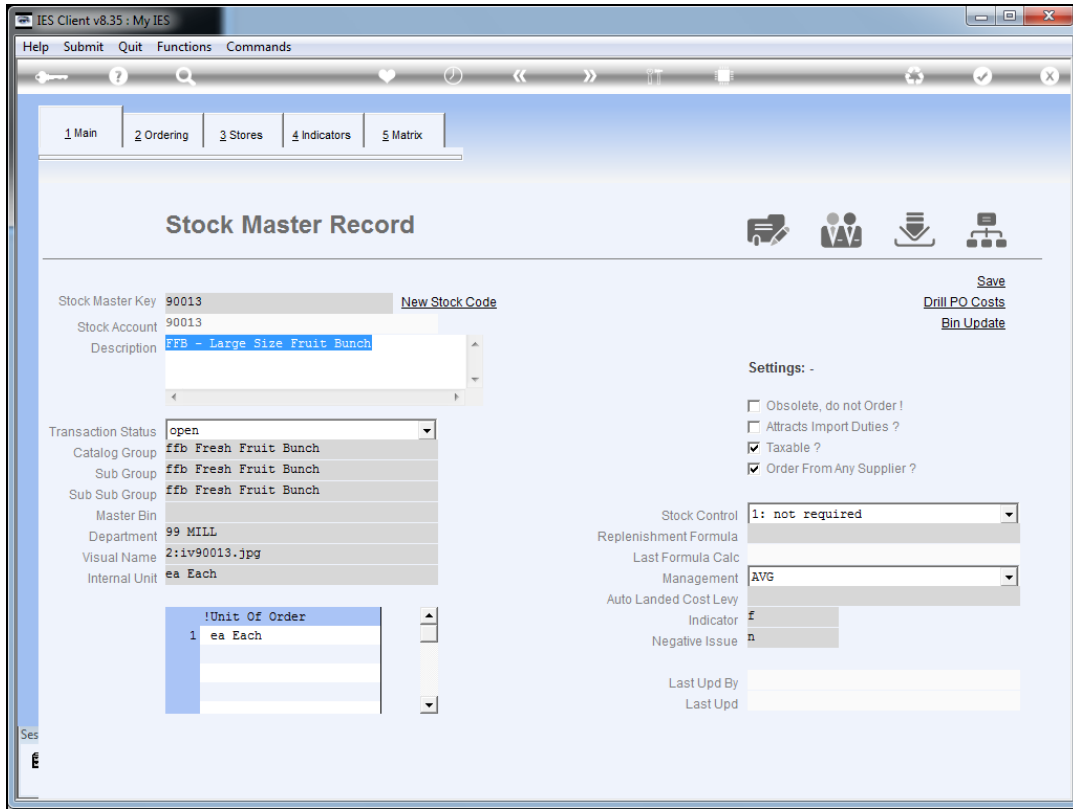
Slide notes: For the Fresh Fruit Bunches delivered at the Weighbridge, we need to define a Stock Code for each of the classifications. Usually these are small, medium and large.

The screenshot shows the 'Stock Master Record' form in the IES Client v8.35 application. The window title is 'IES Client v8.35 : My IES'. The menu bar includes 'Help', 'Submit', 'Quit', 'Functions', and 'Commands'. The main navigation tabs are '1 Main', '2 Ordering', '3 Stores', '4 Indicators', and '5 Matrix'. The form title is 'Stock Master Record'. On the right side, there are icons for a printer, users, a download, and a tree view. The form contains the following fields and sections:

- Stock Master Key:** 90013 (with a 'New Stock Code' link)
- Stock Account:** 90013
- Description:** FFB - Large Size Fruit Bunch
- Transaction Status:** open
- Catalog Group:** ffb Fresh Fruit Bunch
- Sub Group:** ffb Fresh Fruit Bunch
- Sub Sub Group:** ffb Fresh Fruit Bunch
- Master Bin:** (empty)
- Department:** 99 MILL
- Visual Name:** 2:iv90013.jpg
- Internal Unit:** ea Each
- !Unit Of Order:** 1 ea Each
- Settings:**
 - Obsolete, do not Order !
 - Attracts Import Duties ?
 - Taxable ?
 - Order From Any Supplier ?
- Stock Control:** 1: not required
- Replenishment Formula:** (empty)
- Last Formula Calc:** (empty)
- Management:** AVG
- Auto Landed Cost Levy:** (empty)
- Indicator:** f
- Negative Issue:** n
- Last Upd By:** (empty)
- Last Upd:** (empty)

Buttons on the right include 'Save', 'Drill PO Costs', and 'Bin Update'. The bottom left corner shows 'Ses' and a small icon.

Slide 2
Slide notes:



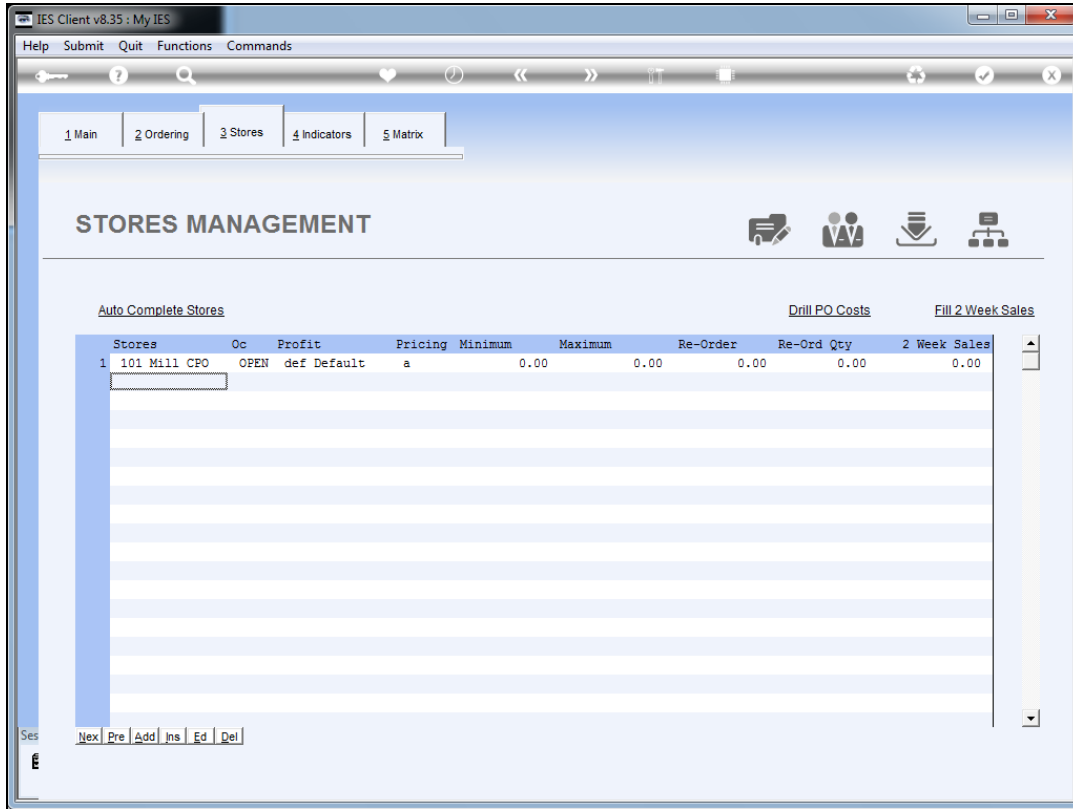
Slide 3
Slide notes:

The screenshot shows the 'Stock Master Record' form in the IES Client v8.35 application. The window title is 'IES Client v8.35 : My IES'. The menu bar includes 'Help', 'Submit', 'Quit', 'Functions', and 'Commands'. A navigation bar at the top has tabs for '1 Main', '2 Ordering', '3 Stores', '4 Indicators', and '5 Matrix'. The main content area is titled 'Stock Master Record' and contains several sections:

- Stock Master Key:** 90013 (with a 'New Stock Code' link).
- Stock Account:** 90013
- Description:** FFB - Large Size Fruit Bunch
- Transaction Status:** open
- Catalog Group:** ffb
- Sub Group:** ffb Fresh Fruit Bunch
- Sub Sub Group:** ffb Fresh Fruit Bunch
- Master Bin:** (empty)
- Department:** 99 MILL
- Visual Name:** 2:iv90013.jpg
- Internal Unit:** ea Each
- !Unit Of Order:** 1 ea Each
- Settings:**
 - Obsolete, do not Order!
 - Attracts Import Duties ?
 - Taxable ?
 - Order From Any Supplier ?
- Stock Control:** 1: not required
- Replenishment Formula:** (empty)
- Last Formula Calc:** (empty)
- Management:** AVG
- Auto Landed Cost Levy:** (empty)
- Indicator:** f
- Negative Issue:** n
- Last Upd By:** (empty)
- Last Upd:** (empty)

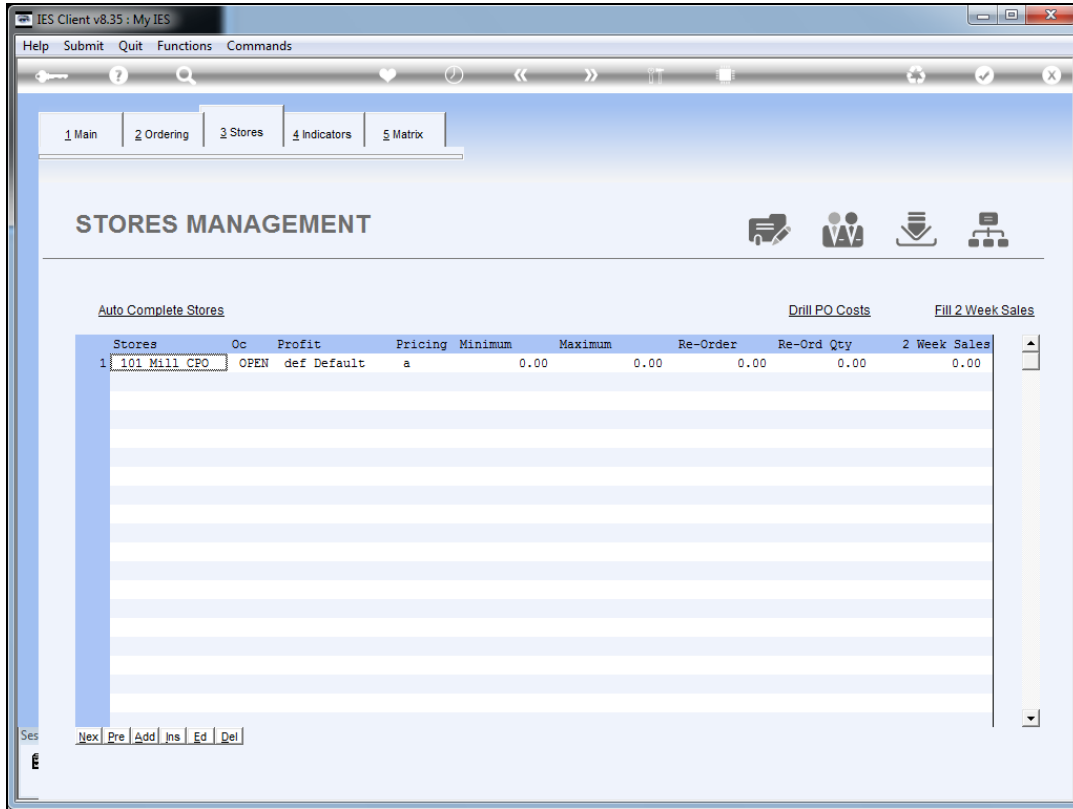
Additional links on the right include 'Save', 'Drill PO Costs', and 'Bin Update'. The bottom left corner shows 'Ses' and a small icon.

Slide 4
Slide notes:

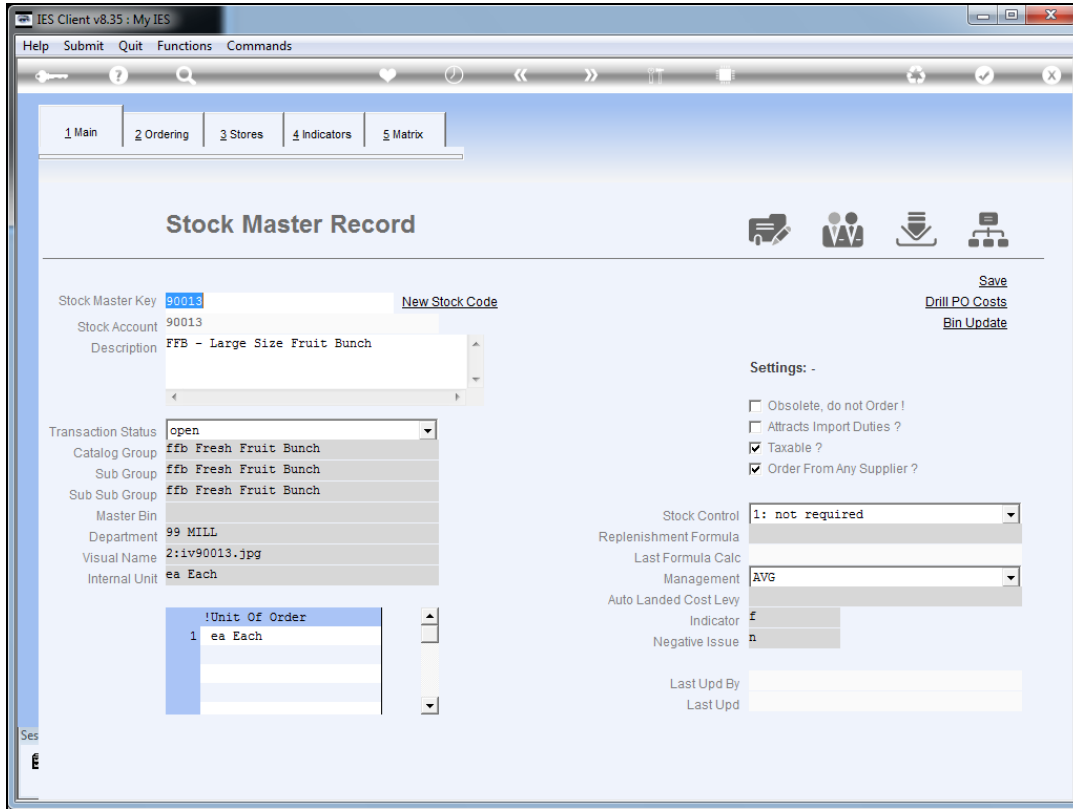


Slide 5

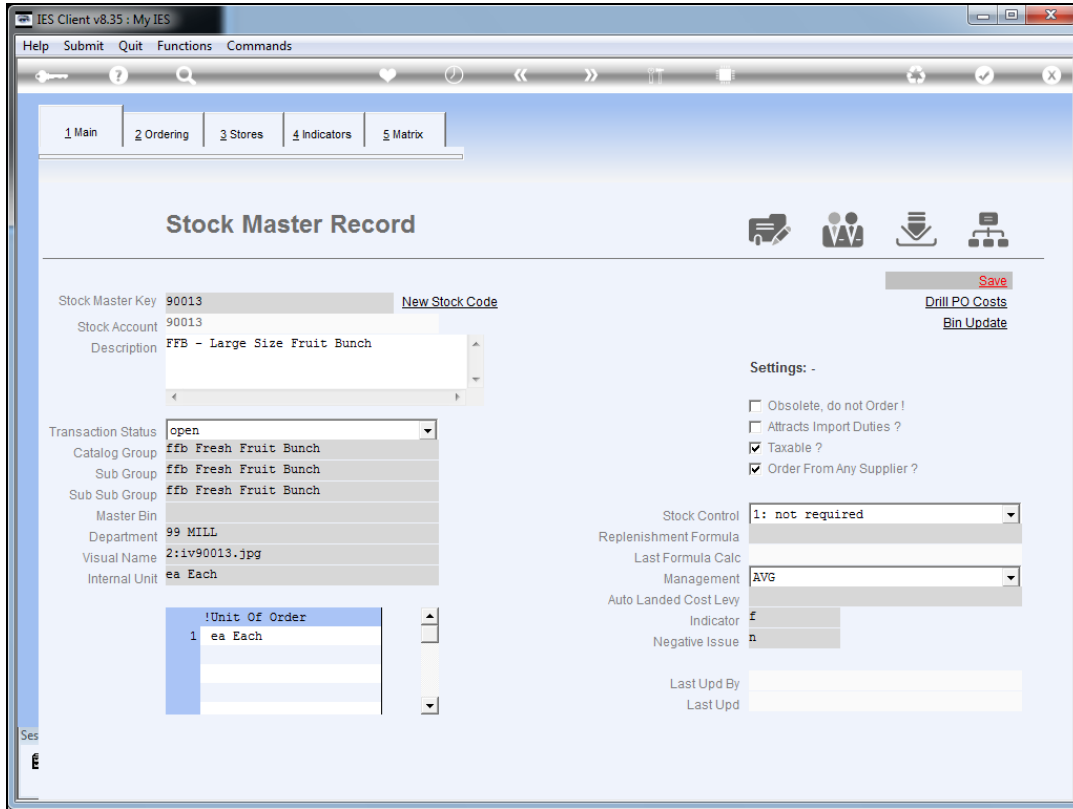
Slide notes: The best Store to list these Stock Items at, will be the Mill CPO Store. The Stock Codes are never transacted, other than having to be classified for the purpose of processing them on the Weighbridge Tickets.



Slide 6
Slide notes:

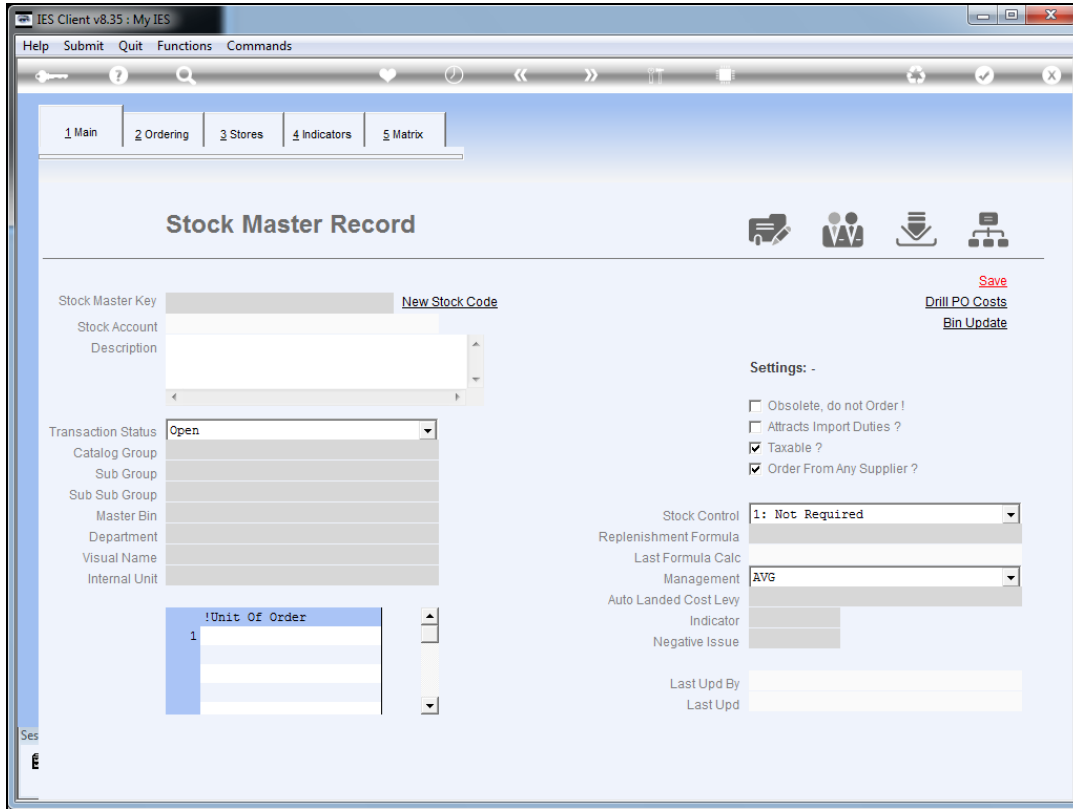


Slide 7
Slide notes:



Slide 8

Slide notes: We also do not have to create Retail Items for these Stock Codes.



Slide 9
Slide notes: