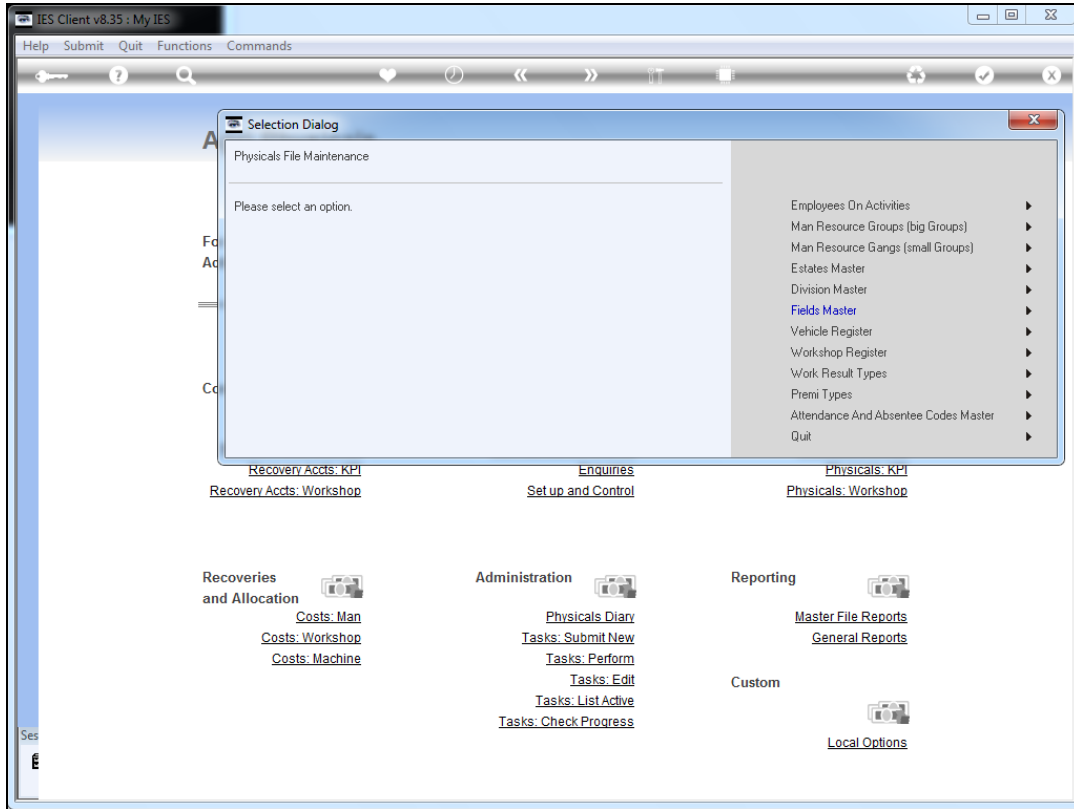


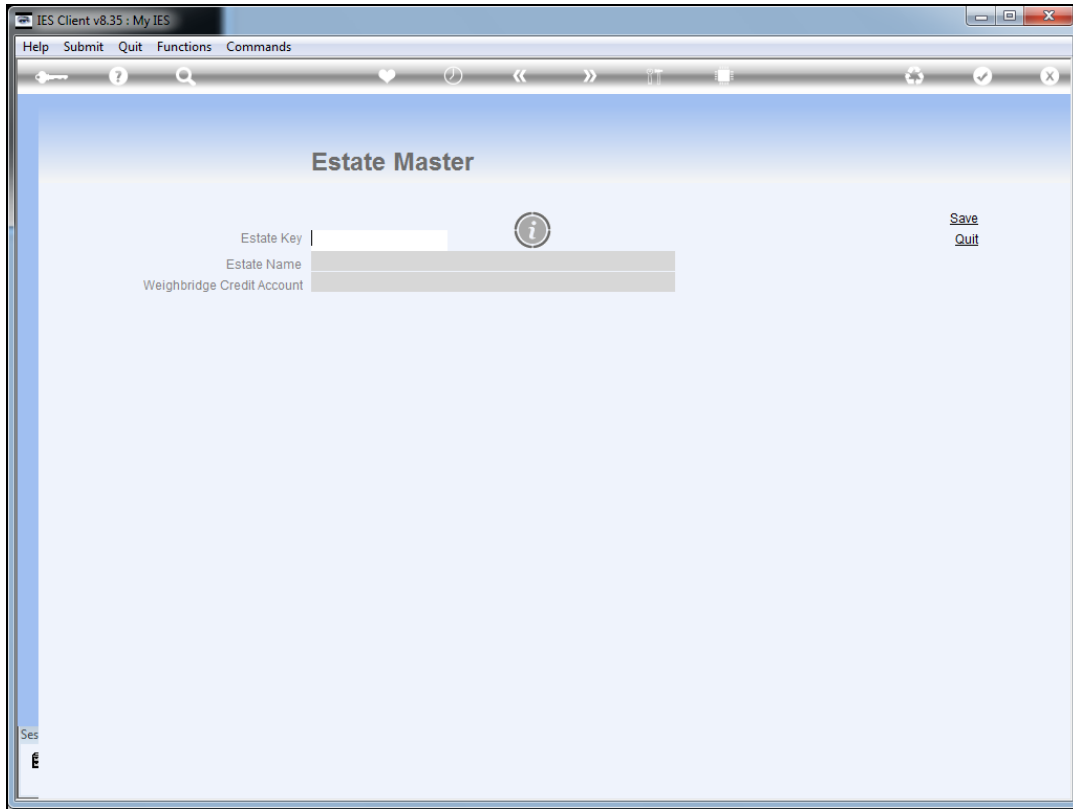
Slide 1

Slide notes: Whether we deliver our FFB to our own or another Mill, we need to process the FFB production or sales to our Estates, or more preferable, to the Block level. For this we need Weighbridge Sales Accounts in the Estates or at the Block level.

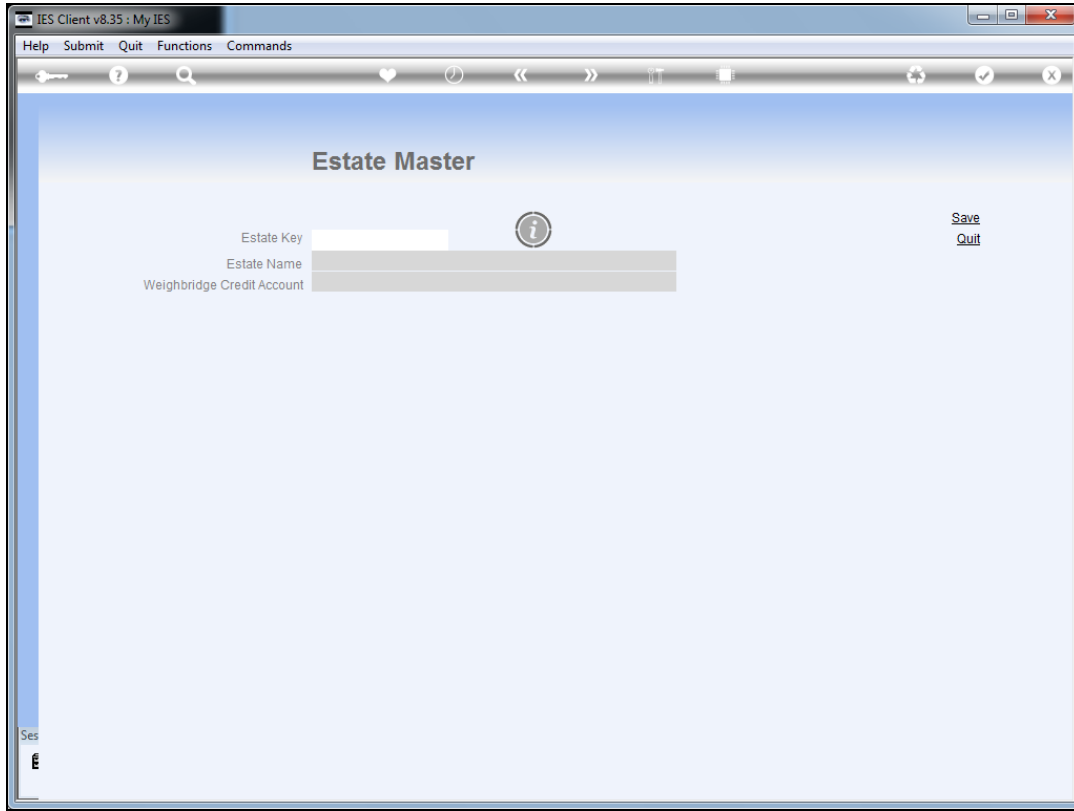


Slide 2

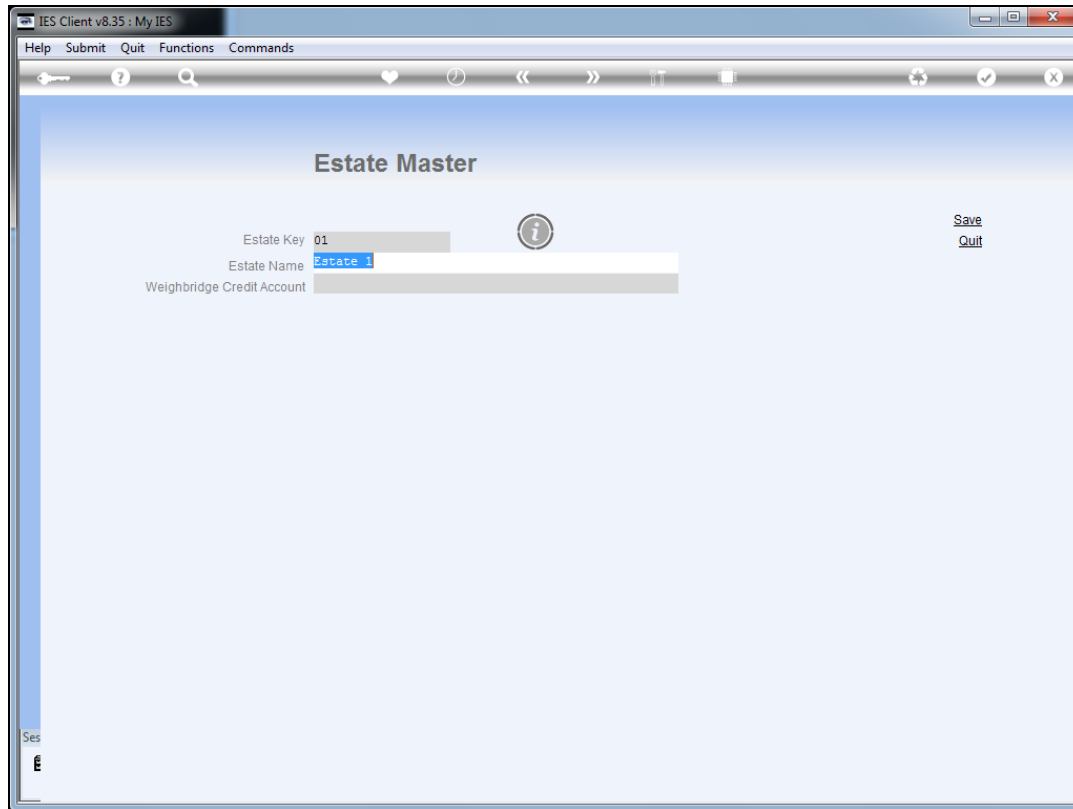
Slide notes: This is set up at the Agri Physicals. We look at the Estate option first.



Slide 3  
Slide notes:

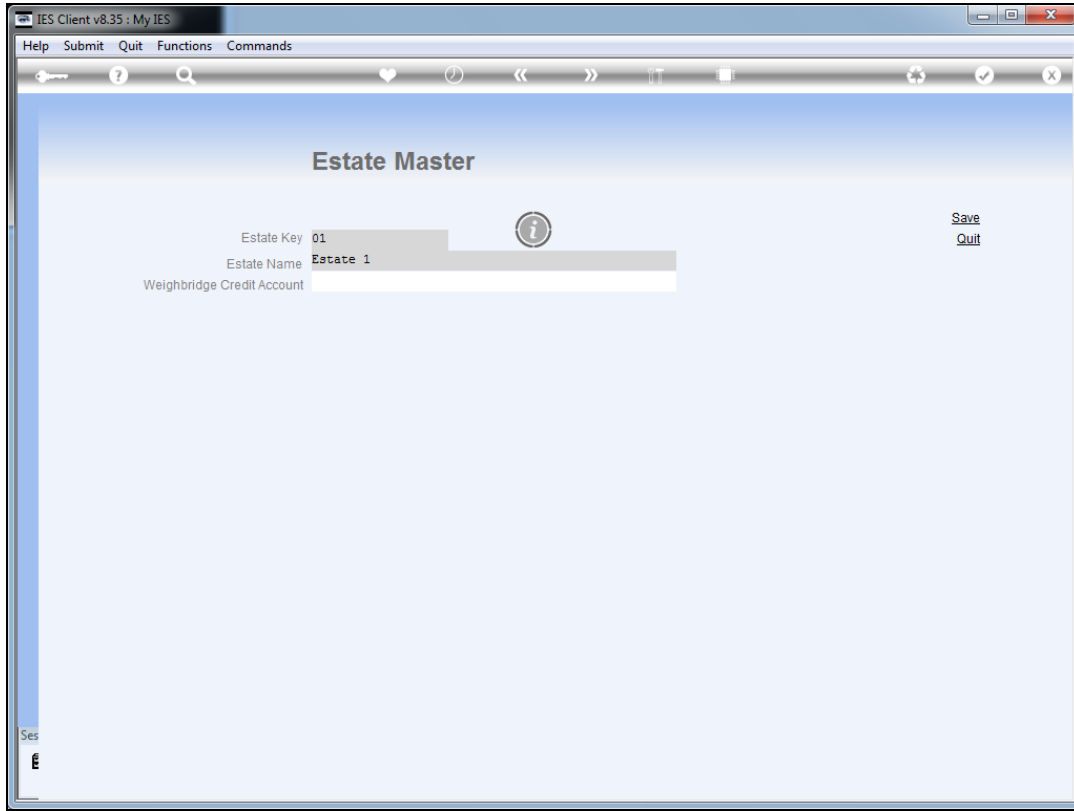


Slide 4  
Slide notes:



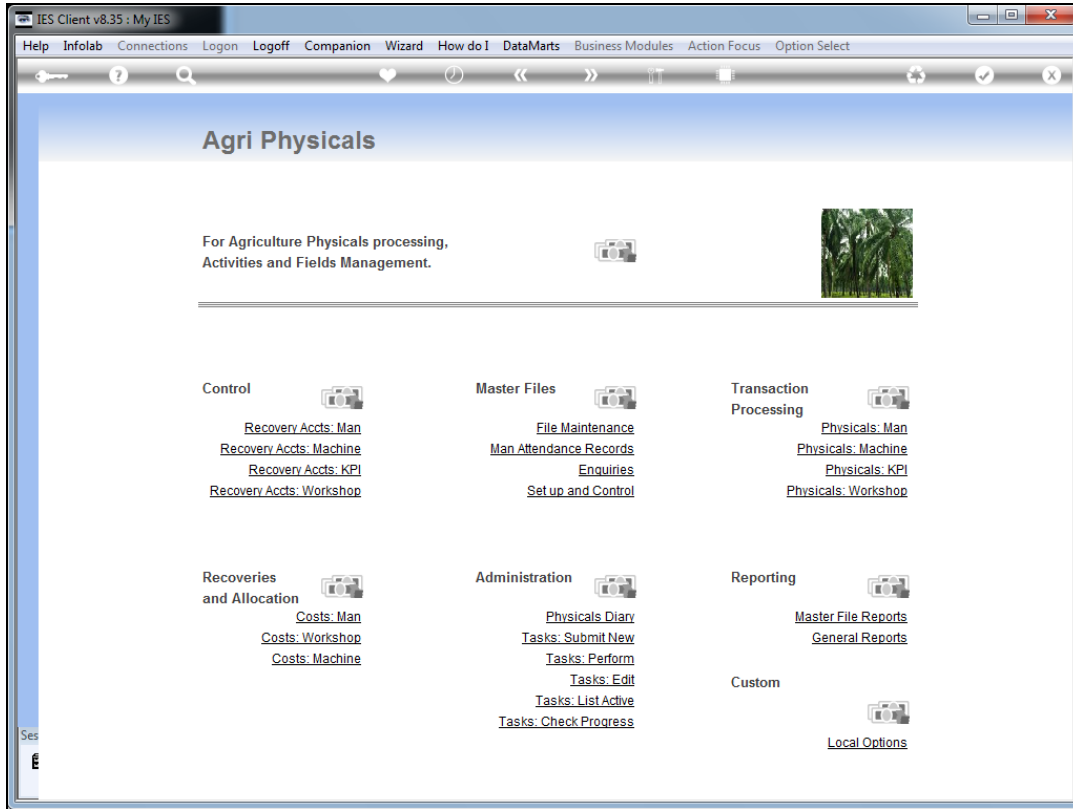
#### Slide 5

Slide notes: For any Estate, we can indicate a Weighbridge Credit Account, and this will be used in the absence of any indication at the Block level. However, the Block production can never be measured if we do this only at Estate level. Therefore, the best place to do it is at the Block level.

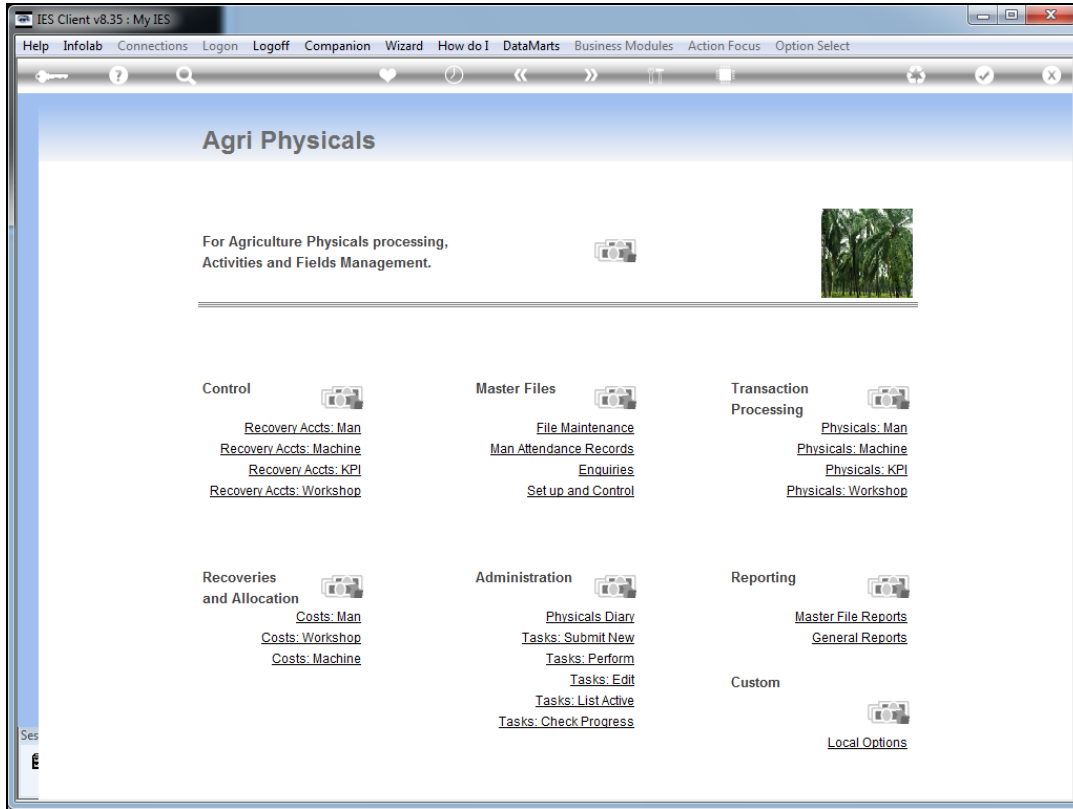


Slide 6

Slide notes:

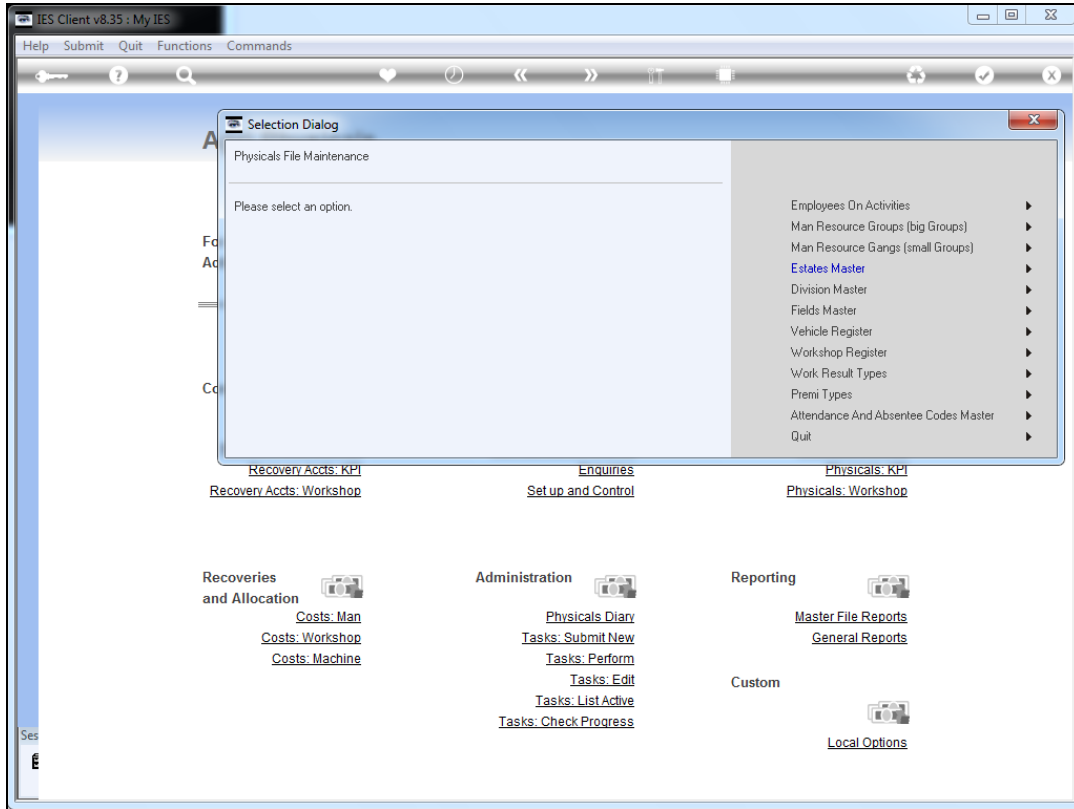


Slide 7  
Slide notes:



Slide 8  
Slide notes:





Slide 9  
Slide notes:

**Field or Block Master**

Field Key: [ ]

Company name: **Oil Palm Group**

Estate Name: [ ]

Division: [ ]

Field Name or No: [ ]

Block: **102**

Status: [ ]

**Planting: -**

Size in HA: [ ]

Number of Trees: [ ]

Planted Area: **0.00**

Population / HA: **0.00**

Start Planting: [ ]

Year(s) Planted
1

End Planting: [ ]

Distance between: [ ]

Species / Seed: [ ]

Subspecies: [ ]

**Land Type: -**

Land-Type: [ ]

Topography: [ ]

**Harvesting: -**

1st Harvest Date: [ ]

Area Harvested (HA): **0.00**

Not Harvested: **0.00**

Weighbridge Credit: [ ]

Plant Year	Komidal (Kg)	Basis Borong
1		

**Data Update: -**

Last Upd By: [ ]

Last Upd: [ ]

Save  
Quit  
Generate Plant Year Accts  
Costs Transfer (Im)Mature  
Open / Close (Im)Mature

Slide 10  
Slide notes:

**Field or Block Master**

Field Key:

Company name: **Oil Palm Group**

Estate Name:

Division:

Field Name or No:

Block: **102**

Status:

**Planting: -**

Size in HA:

Number of Trees:

Planted Area: **0.00**

Population / HA: **0.00**

Start Planting:

Year(s) Planted
1

End Planting:

Distance between:

Species / Seed:

Subspecies:

**Land Type: -**

Land-Type:

Topography:

**Harvesting: -**

1st Harvest Date:

Area Harvested (HA): **0.00**

Not Harvested: **0.00**

Weighbridge Credit:

Plant Year	Komidal (Kg)	Basis Borong
1		

**Data Update: -**

Last Upd By:

Last Upd:

Save  
Quit  
Generate Plant Year Accts  
Costs Transfer (Im)Mature  
Open / Close (Im)Mature

Slide 11  
Slide notes:

**Field or Block Master**

Field Key: 101

Company name: Oil Palm Group

Estate Name: 01 Estate 1

Division: 01 Division 1

Field Name or No: Block 101

Block: 101

Status: Mature

**Land Type: -**

Land-Type: \*\*\*\*\*

Topography: \*\*\*\*\*

**Harvesting: -**

1st Harvest Date: \*\*\*\*\*

Area Harvested (HA): 0.00

Not Harvested: 23.00

Weighbridge Credit: 99-0-0-18005 Block 101 - FFB Sales

**Planting: -**

Size in HA: 25.00

Number of Trees: 2350

Planted Area: 23.00

Population / HA: 102.17

Start Planting: 01/02/2001

Year(s) Planted
1 2001

End Planting: 10/10/2001

Distance between: \*\*\*\*\*

Species / Seed: \*\*\*\*\*

Subspecies: \*\*\*\*\*

**Data Update: -**

Last Upd By: Tim

Last Upd: 17/04/2012

Save  
Quit  
Generate Plant Year Accts  
Costs Transfer (Im)Mature  
Open / Close (Im)Mature

Slide 12

Slide notes: On the Block master, we can indicate the Weighbridge Credit account to be used, and this account will be in the Block series of accounts. When a Ticket is posted for this Block, then the Kg of FFB is posted as a Physical credit, and the Financial Amount representing the price for the total FFB weight is posted as a Financial credit at the same time. Therefore, we can then easily measure the Block production.

**Field or Block Master**

Field Key: 101

Company name: Oil Palm Group

Estate Name: 01 Estate 1

Division: 01 Division 1

Field Name or No: Block 101

Block: 101

Status: Mature

**Land Type: -**

Land-Type: \*\*\*\*\*

Topography: \*\*\*\*\*

**Harvesting: -**

1st Harvest Date: \*\*\*\*\*

Area Harvested (HA): 0.00

Not Harvested: 23.00

Weighbridge Credit: 99-0-0-18005 Block 101 - FFB Sales

**Planting: -**

Size in HA: 25.00

Number of Trees: 2350

Planted Area: 23.00

Population / HA: 102.17

Start Planting: 01/02/2001

Year(s) Planted
1 2001

End Planting: 10/10/2001

Distance between: \*\*\*\*\*

Species / Seed: \*\*\*\*\*

Subspecies: \*\*\*\*\*

**Data Update: -**

Last Upd By: Tim

Last Upd: 17/04/2012

[Save](#)  
[Quit](#)  
[Generate Plant Year Accts](#)  
[Costs Transfer \(Im\)Mature](#)  
[Open / Close \(Im\)Mature](#)

Slide 13  
Slide notes:

**Field or Block Master**

Field Key: 101

Company name: 01 Palm Group

Estate Name: 01 Estate 1

Division: 01 Division 1

Field Name or No: Block 101

Block: 101

Status: Mature

**Land Type: -**

Land-Type: \*\*\*\*\*

Topography: \*\*\*\*\*

**Harvesting: -**

1st Harvest Date: \*\*\*\*\*

Area Harvested (HA): 0.00

Not Harvested: 23.00

Weighbridge Credit: 990018005

**Planting: -**

Size in HA: 25.00

Number of Trees: 2350

Planted Area: 23.00

Population / HA: 102.17

Start Planting: 01/02/2001

Year(s) Planted
1 2001

End Planting: 10/10/2001

Distance between: \*\*\*\*\*

Species / Seed: \*\*\*\*\*

Subspecies: \*\*\*\*\*

**Data Update: -**

Last Upd By: Tim

Last Upd: 17/04/2012

[Save](#)  
[Quit](#)  
[Generate Plant Year Accts](#)  
[Costs Transfer \(Im\)Mature](#)  
[Open / Close \(Im\)Mature](#)

Slide 14  
Slide notes:

**Field or Block Master**

Field Key: 101

Company name: 01 Palm Group

Estate Name: 01 Estate 1

Division: 01 Division 1

Field Name or No: Block 101

Block: 101

Status: Mature

**Land Type: -**

Land-Type: \*\*\*\*\*

Topography: \*\*\*\*\*

**Harvesting: -**

1st Harvest Date: \*\*\*\*\*

Area Harvested (HA): 0.00

Not Harvested: 23.00

Weighbridge Credit: 990018005

**Planting: -**

Size in HA: 25.00

Number of Trees: 2350

Planted Area: 23.00

Population / HA: 102.17

Start Planting: 01/02/2001

Year(s) Planted
1 2001

End Planting: 10/10/2001

Distance between: \*\*\*\*\*

Species / Seed: \*\*\*\*\*

Subspecies: \*\*\*\*\*

**Data Update: -**

Last Upd By: Tim

Last Upd: 17/04/2012

[Save](#)  
[Quit](#)  
[Generate Plant Year Accts](#)  
[Costs Transfer \(Im\)Mature](#)  
[Open / Close \(Im\)Mature](#)

Slide 15  
Slide notes:

The screenshot shows a web browser window titled "IES Client v8.35: My IES". The browser's address bar is empty, and the page title is "Document". The main content area displays the following text:

CURRENT PROCESS = [FIELDMASTER] FIELDS MASTER

The Weighbridge Credit Account is optional at Block and Estate level, but should be specified at one of the levels at least. If specified, then this is a GL Account in the Estate or Block series of Accounts, which will show the Income Credit for Weighbridge deliveries of Fresh Fruit Bunches.

The Credit may be processed at Block level or at Estate level. When specified on the Block, then this Account will be used, whereas if to be processed at Estate level, then the Account is not specified on the Block but on the Estate Master.

For internal deliveries to Weighbridge, the system will first check whether the Block has an Account specified, and if not, then it checks the Estate. Therefore, it is possible to specify an Account on some Blocks while not on others, and to specify the Estate Account to be used when no Account is listed for the Block.

Function

Agri Fields Master.

Caution

None.

Description

This is an application data file. Please consult the online prompt help for the various data fields.

On the right side of the page, there are several interactive elements: a "Next" link, a "Make a copy -" button, a "Text Copy" link, a "Search Phrase" input field, and a "Search" button. Below the search input, there is a note: "Search the IES web on-line documentation by typing a phrase, then choose 'search'."

At the bottom of the page, there is a "Doc Key" field containing the text "tt\*userdirect".

Slide 16

Slide notes: Here is a full description of the Weighbridge Credit account and how it is used.



The screenshot shows a web browser window titled "IES Client v8.35: My IES". The browser's address bar is empty, and the page title is "Document". The main content area displays the following text:

CURRENT PROCESS = [FIELDMASTER] FIELDS MASTER

The Weighbridge Credit Account is optional at Block and Estate level, but should be specified at one of the levels at least. If specified, then this is a GL Account in the Estate or Block series of Accounts, which will show the Income Credit for Weighbridge deliveries of Fresh Fruit Bunches.

The Credit may be processed at Block level or at Estate level. When specified on the Block, then this Account will be used, whereas if to be processed at Estate level, then the Account is not specified on the Block but on the Estate Master.

For internal deliveries to Weighbridge, the system will first check whether the Block has an Account specified, and if not, then it checks the Estate. Therefore, it is possible to specify an Account on some Blocks while not on others, and to specify the Estate Account to be used when no Account is listed for the Block.

Function

Agri Fields Master.

Caution

None.

Description

This is an application data file. Please consult the online prompt help for the various data fields.

On the right side of the page, there are several interactive elements: a "Next" link, a "Make a copy -" button, a "Text Copy" link, a "Search Phrase" input field, and a "Search" button. Below the search field, there is a note: "Search the IES web on-line documentation by typing a phrase, then choose 'search'."

At the bottom of the page, there is a "Doc Key tt\*userdirect" and a "Ses" label.

Slide 17  
Slide notes:

**Field or Block Master**

Field Key: 101

Company name: 01 Palm Group

Estate Name: 01 Estate 1

Division: 01 Division 1

Field Name or No: Block 101

Block: 101

Status: Mature

**Land Type: -**

Land-Type: \*\*\*\*\*

Topography: \*\*\*\*\*

**Harvesting: -**

1st Harvest Date: \*\*\*\*\*

Area Harvested (HA): 0.00

Not Harvested: 23.00

Weighbridge Credit: 990018005

**Planting: -**

Size in HA: 25.00

Number of Trees: 2350

Planted Area: 23.00

Population / HA: 102.17

Start Planting: 01/02/2001

Year(s) Planted
1 2001

End Planting: 10/10/2001

Distance between: \*\*\*\*\*

Species / Seed: \*\*\*\*\*

Subspecies: \*\*\*\*\*

**Data Update: -**

Last Upd By: Tim

Last Upd: 17/04/2012

[Save](#)  
[Quit](#)  
[Generate Plant Year Accts](#)  
[Costs Transfer \(Im\)Mature](#)  
[Open / Close \(Im\)Mature](#)

Slide 18  
Slide notes:

**Field or Block Master**

Field Key: 101

Company name: 01 Palm Group

Estate Name: 01 Estate 1

Division: 01 Division 1

Field Name or No: Block 101

Block: 101

Status: Mature

**Land Type: -**

Land-Type: \*\*\*\*\*

Topography: \*\*\*\*\*

**Harvesting: -**

1st Harvest Date: \*\*\*\*\*

Area Harvested (HA): 0.00

Not Harvested: 23.00

Weighbridge Credit: 990018005

**Planting: -**

Size in HA: 25.00

Number of Trees: 2350

Planted Area: 23.00

Population / HA: 102.17

Start Planting: 01/02/2001

Year(s) Planted
1 2001

End Planting: 10/10/2001

Distance between: \*\*\*\*\*

Species / Seed: \*\*\*\*\*

Subspecies: \*\*\*\*\*

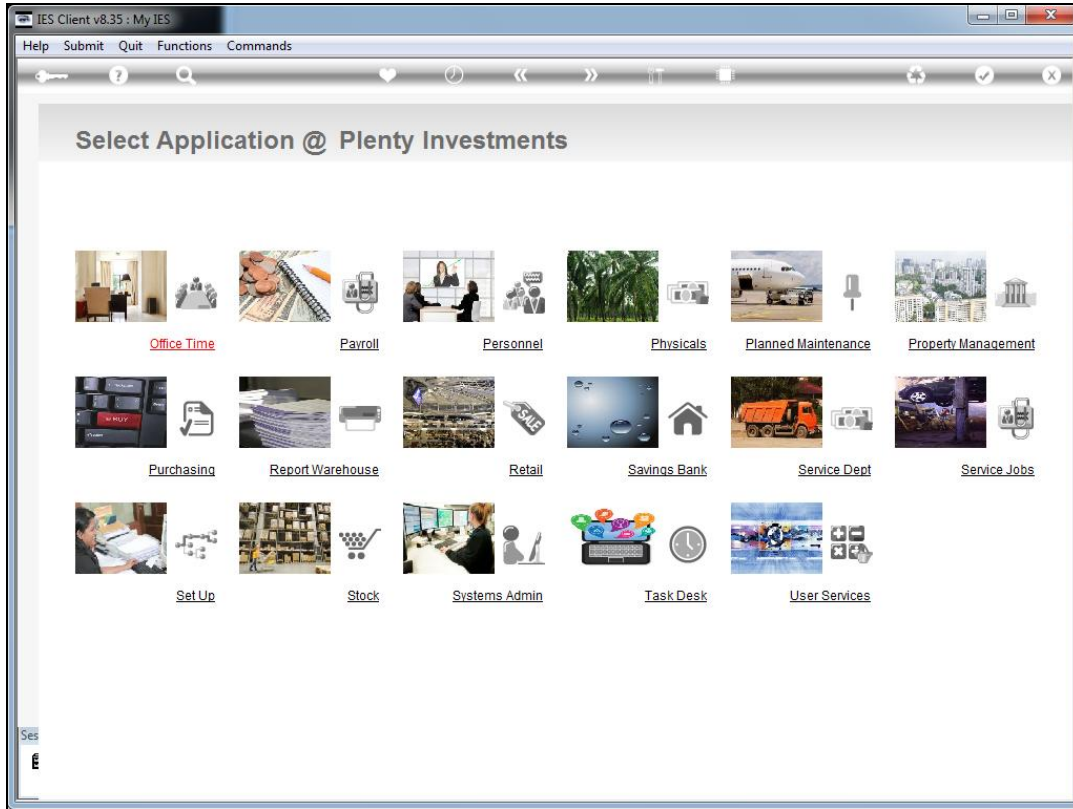
**Data Update: -**

Last Upd By: Tim

Last Upd: 17/04/2012

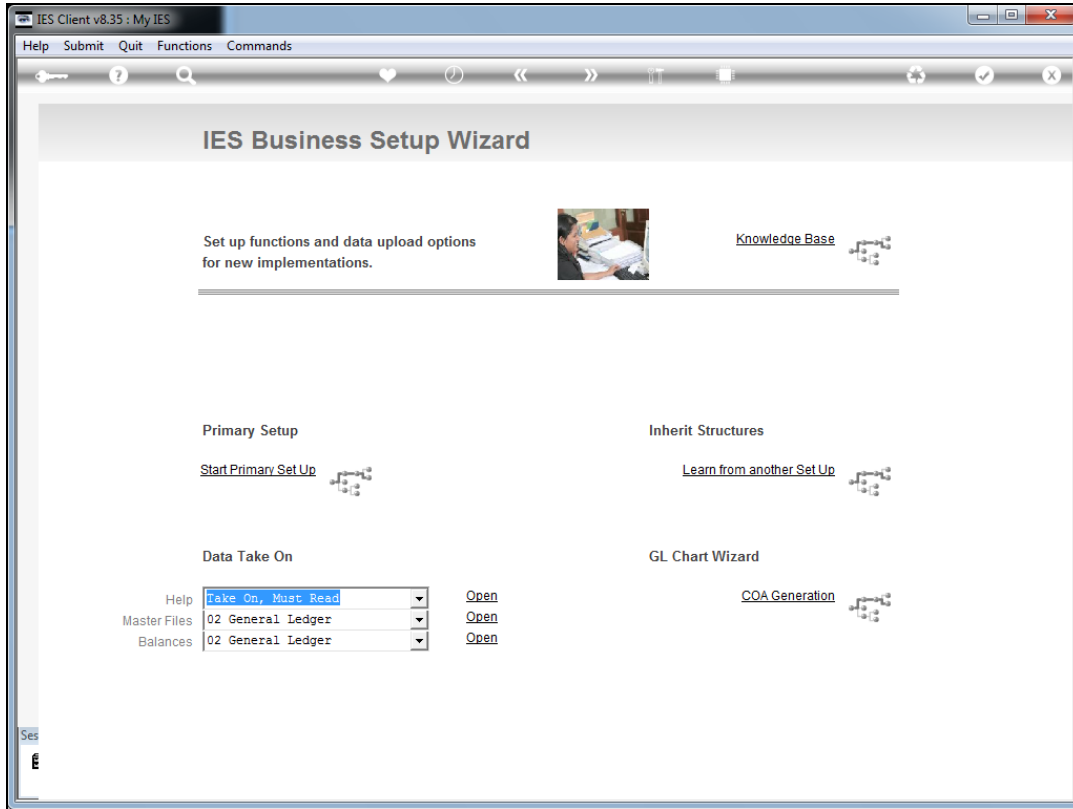
[Save](#)  
[Quit](#)  
[Generate Plant Year Accts](#)  
[Costs Transfer \(Im\)Mature](#)  
[Open / Close \(Im\)Mature](#)

Slide 19  
Slide notes:

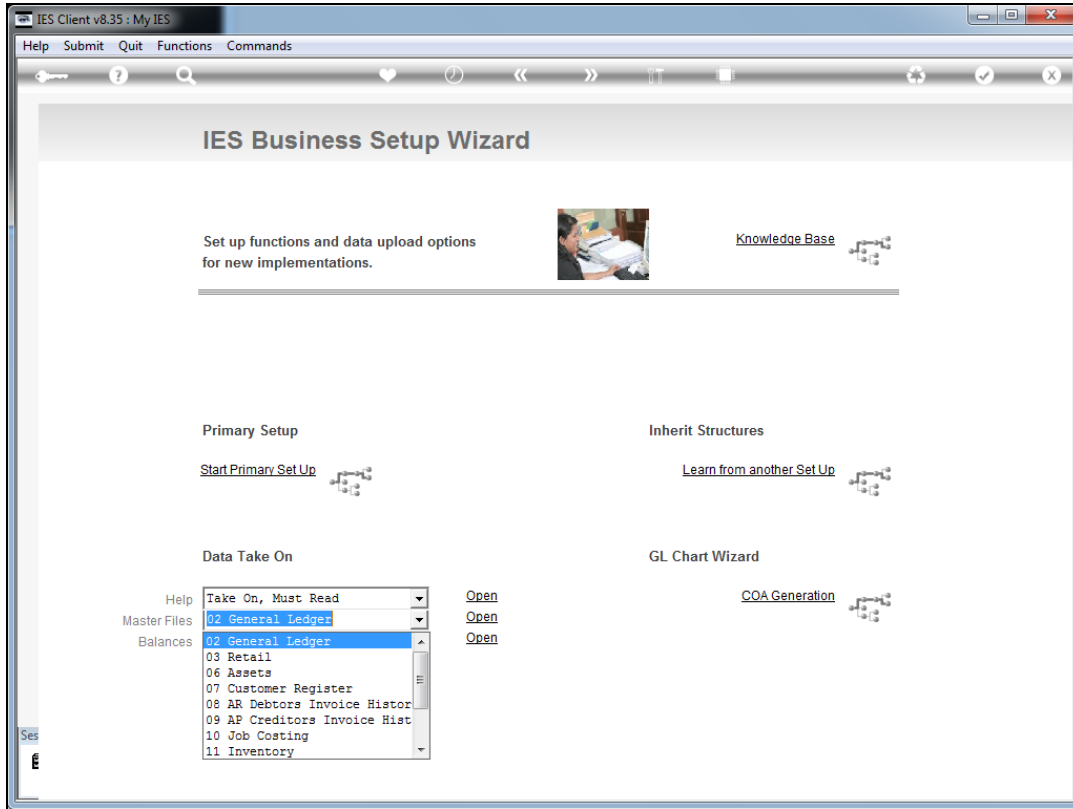


Slide 20

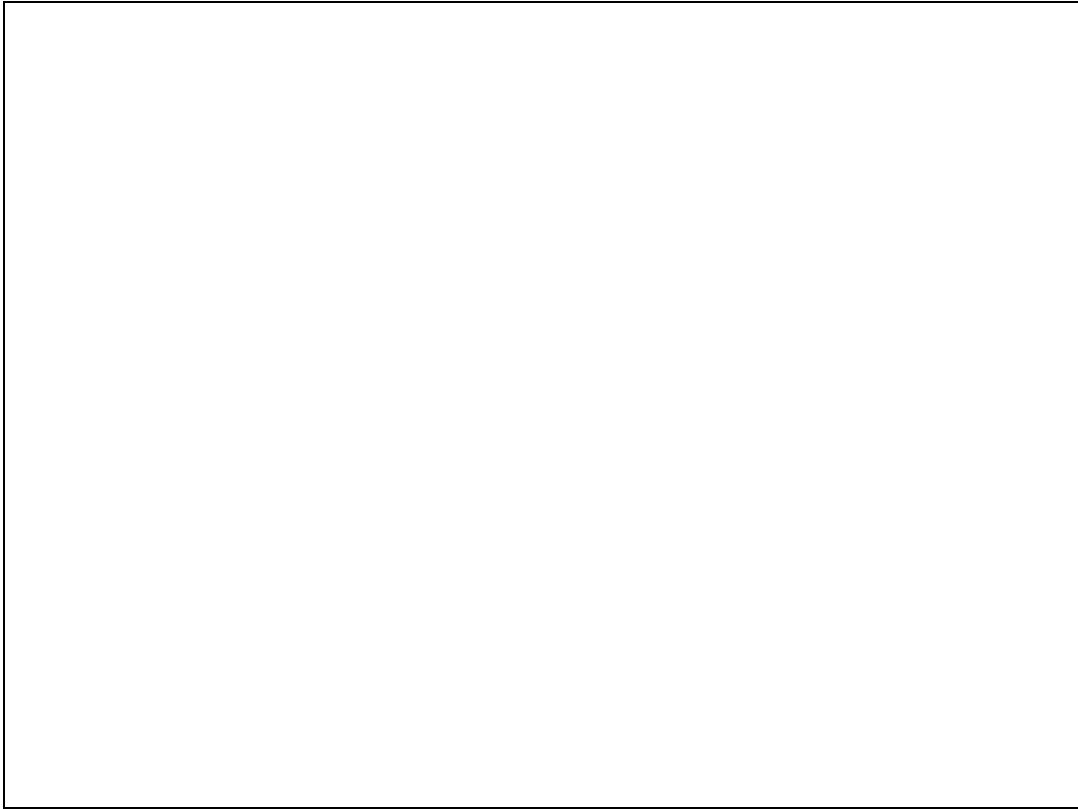
Slide notes: The Weighbridge Credit Accounts can be specified manually for existing Blocks, but it can also be uploaded. Let's have a look at the option for this at the Setup module.



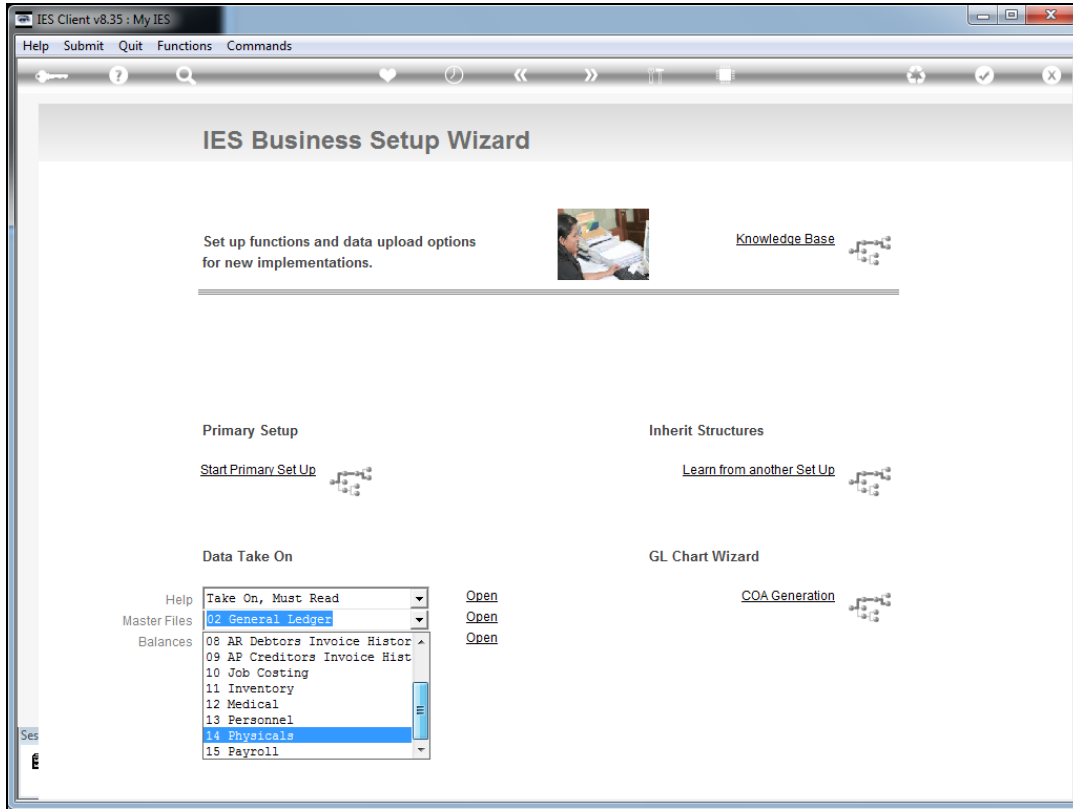
Slide 21  
Slide notes:



Slide 22  
Slide notes:

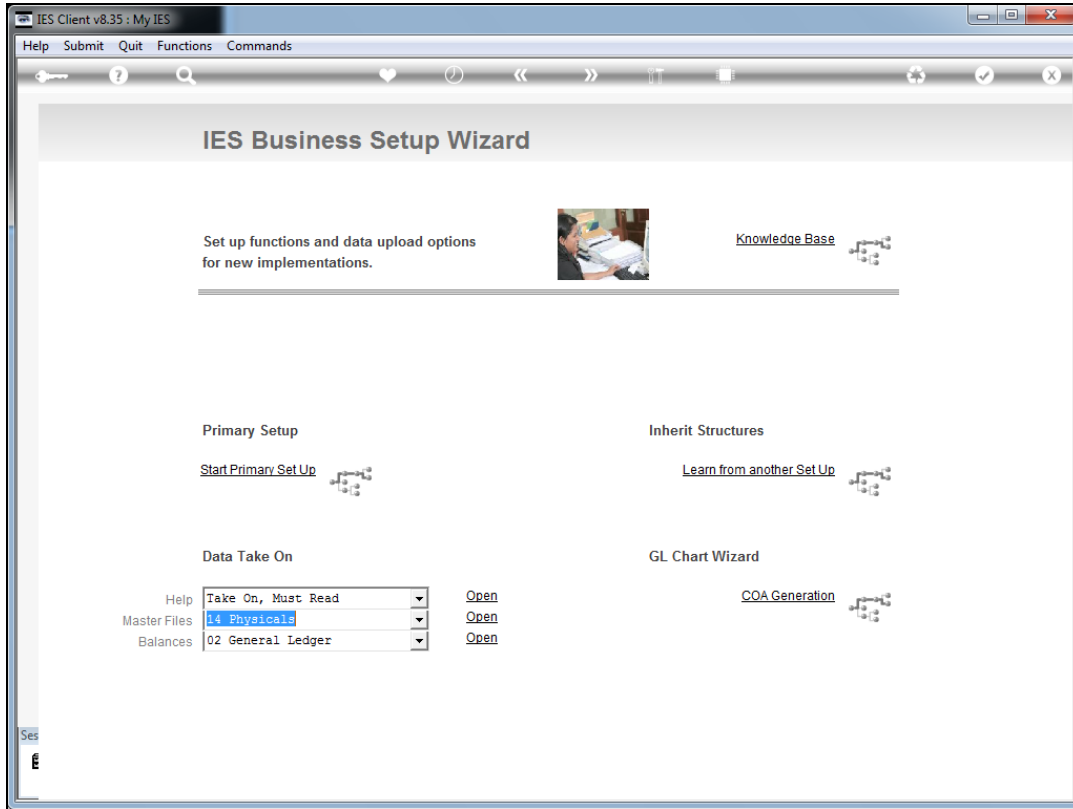


Slide 23  
Slide notes:

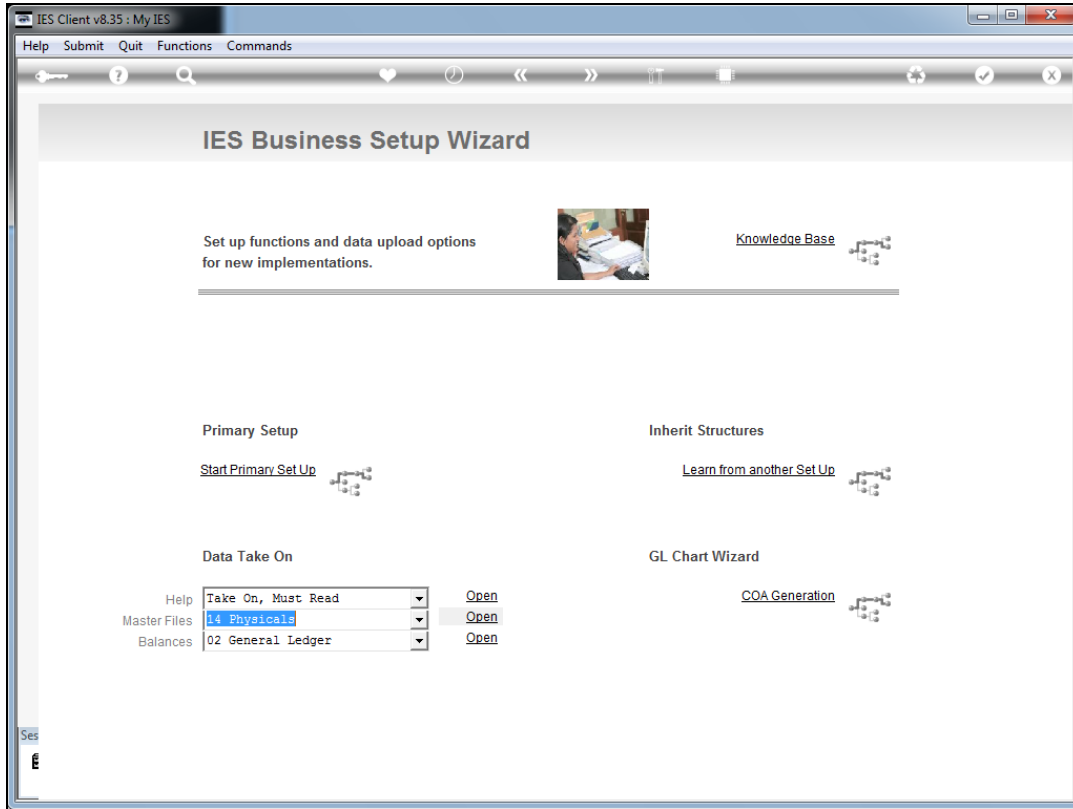


Slide 24  
Slide notes:

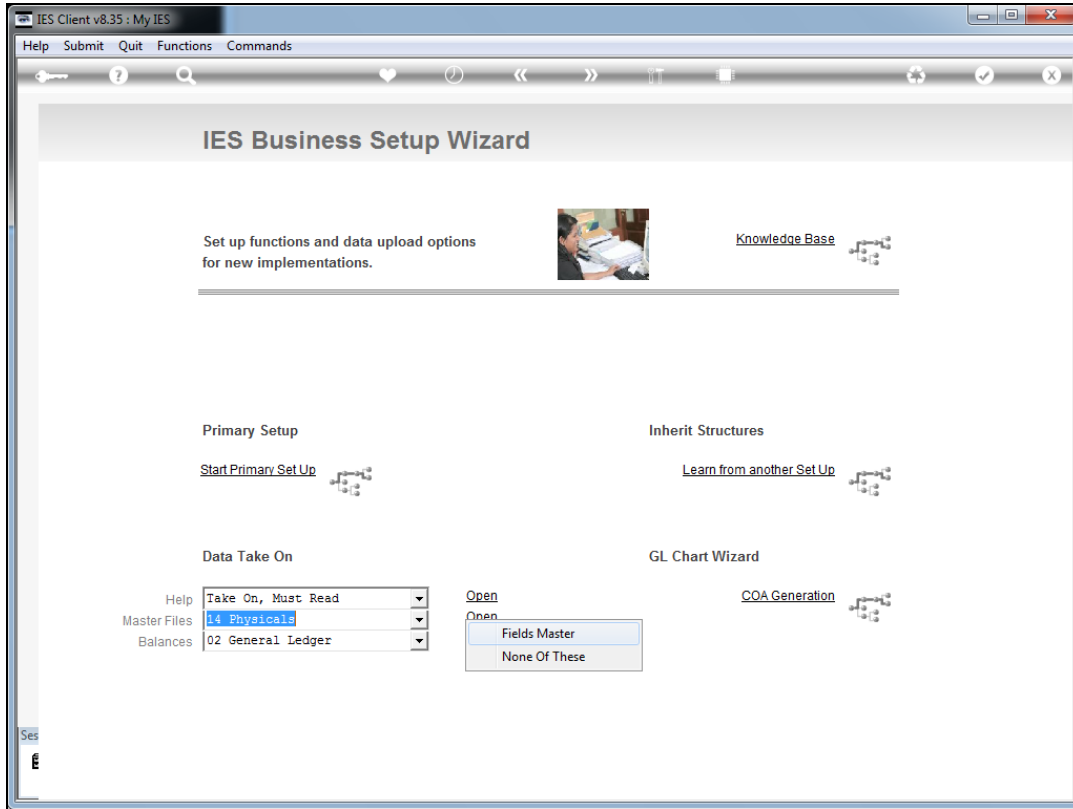




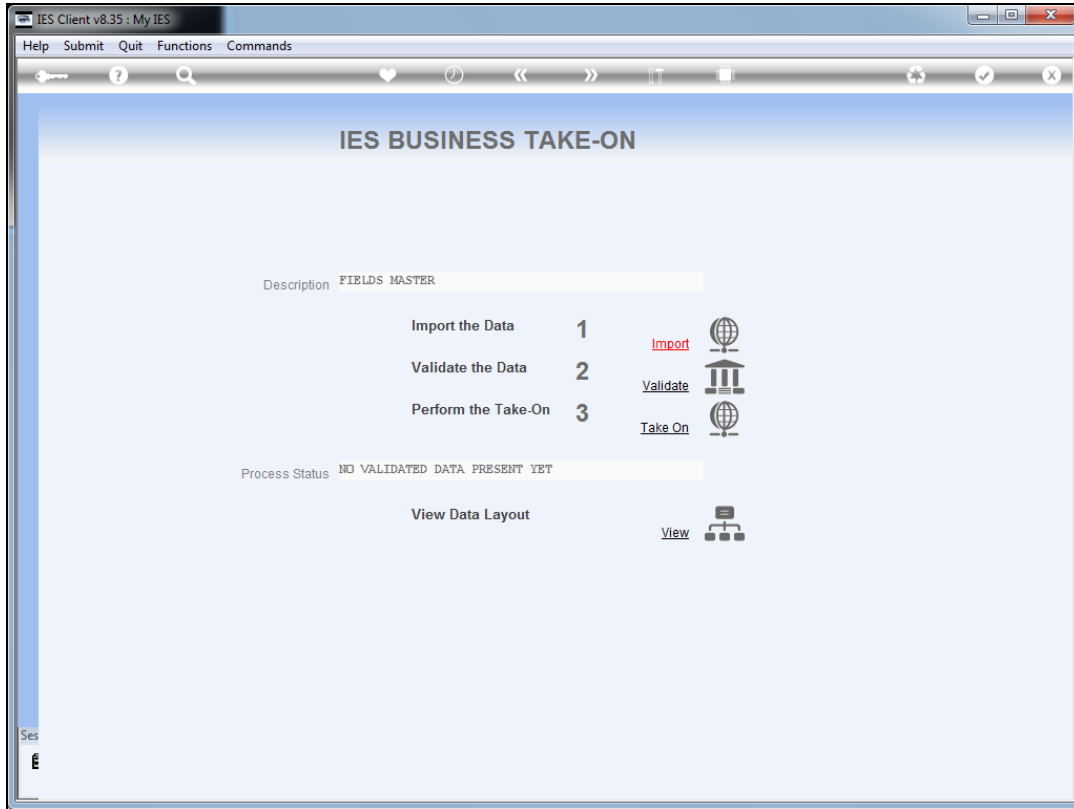
Slide 25  
Slide notes:



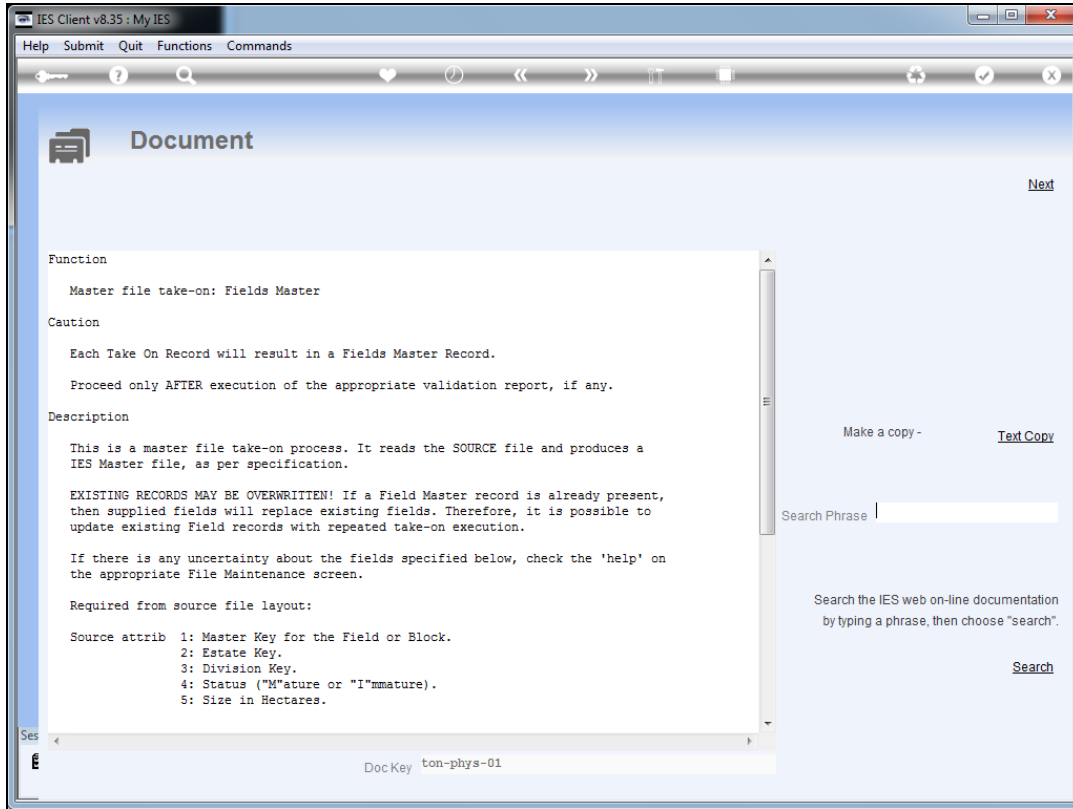
Slide 26  
Slide notes:



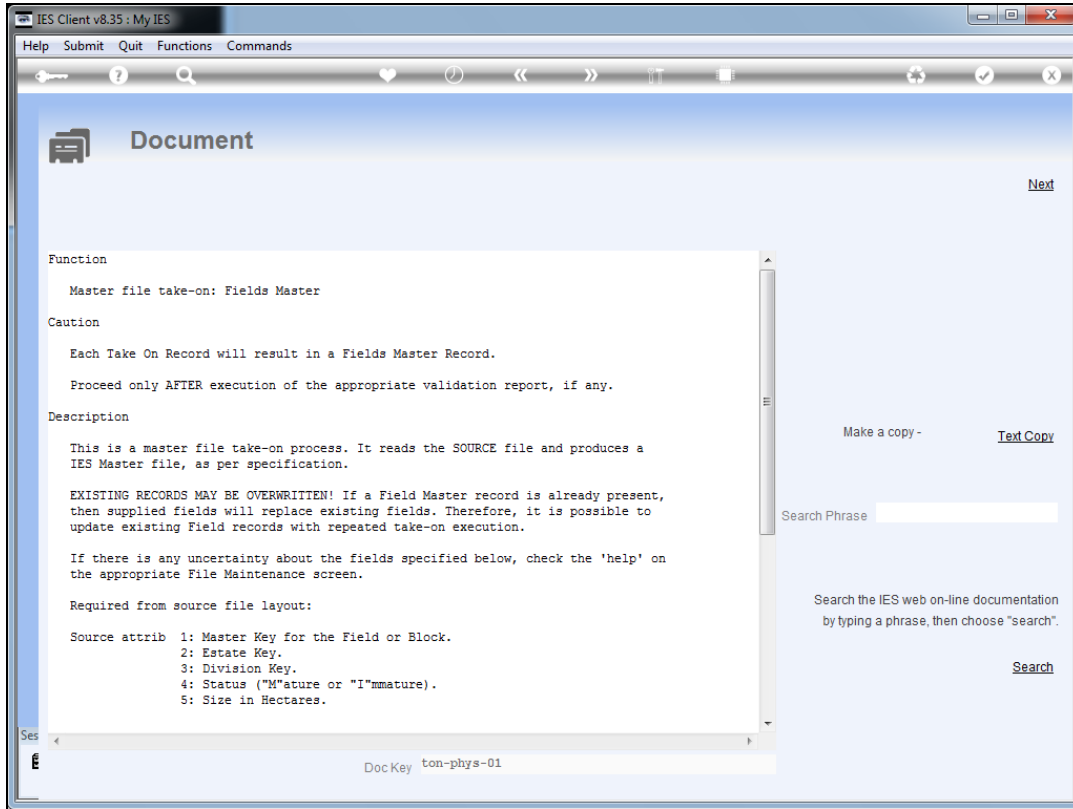
Slide 27  
Slide notes:



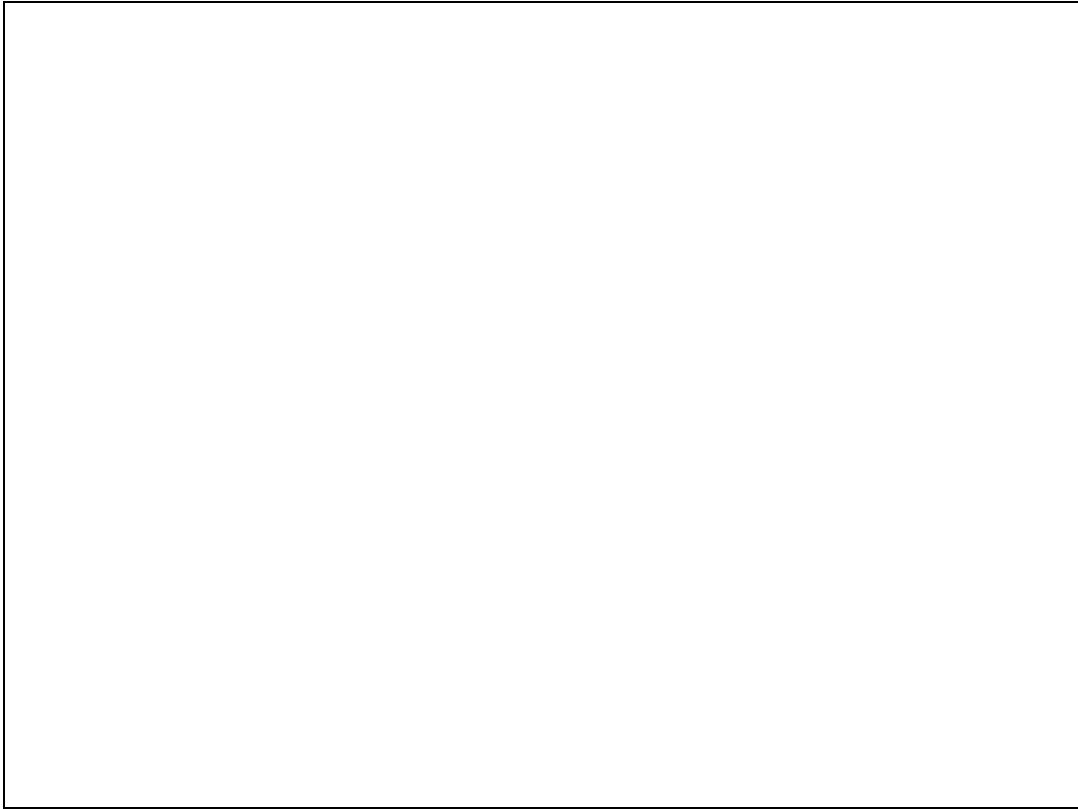
Slide 28  
Slide notes:



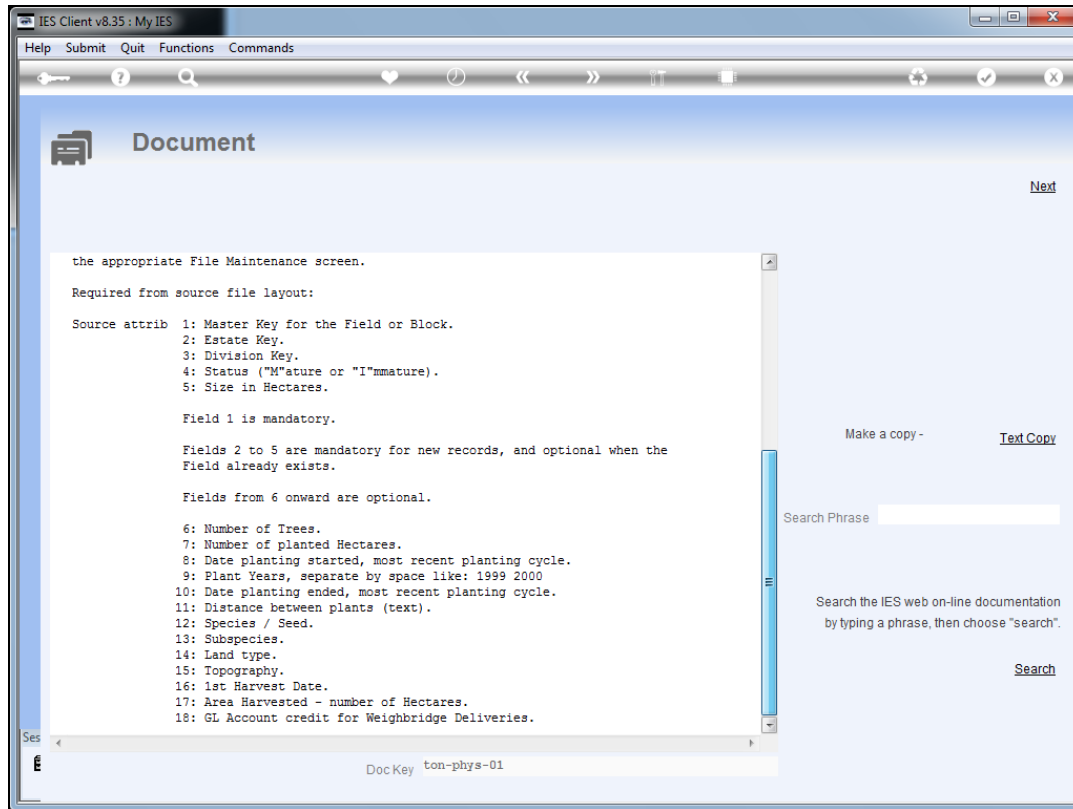
Slide 29  
 Slide notes:



Slide 30  
Slide notes:



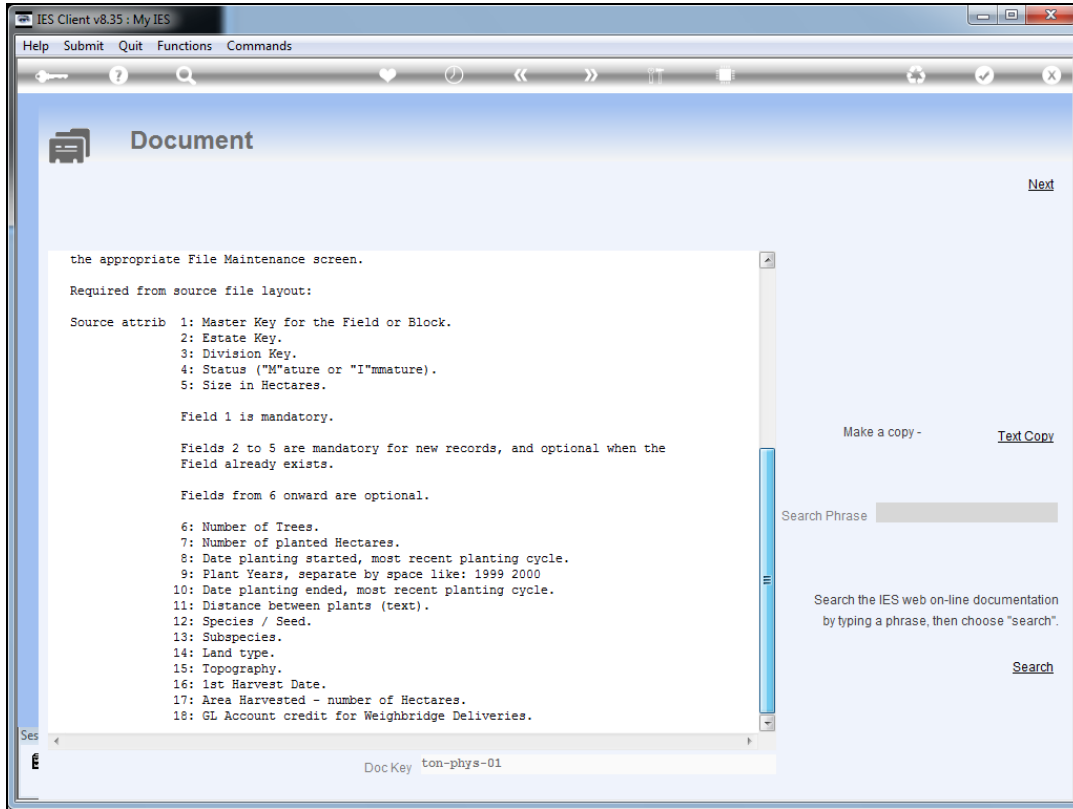
Slide 31  
Slide notes:



### Slide 32

Slide notes: Notice the option to upload the Weighbridge Credit Account per Block. This can also be uploaded easily when the Blocks are already present.





Slide 33  
 Slide notes: