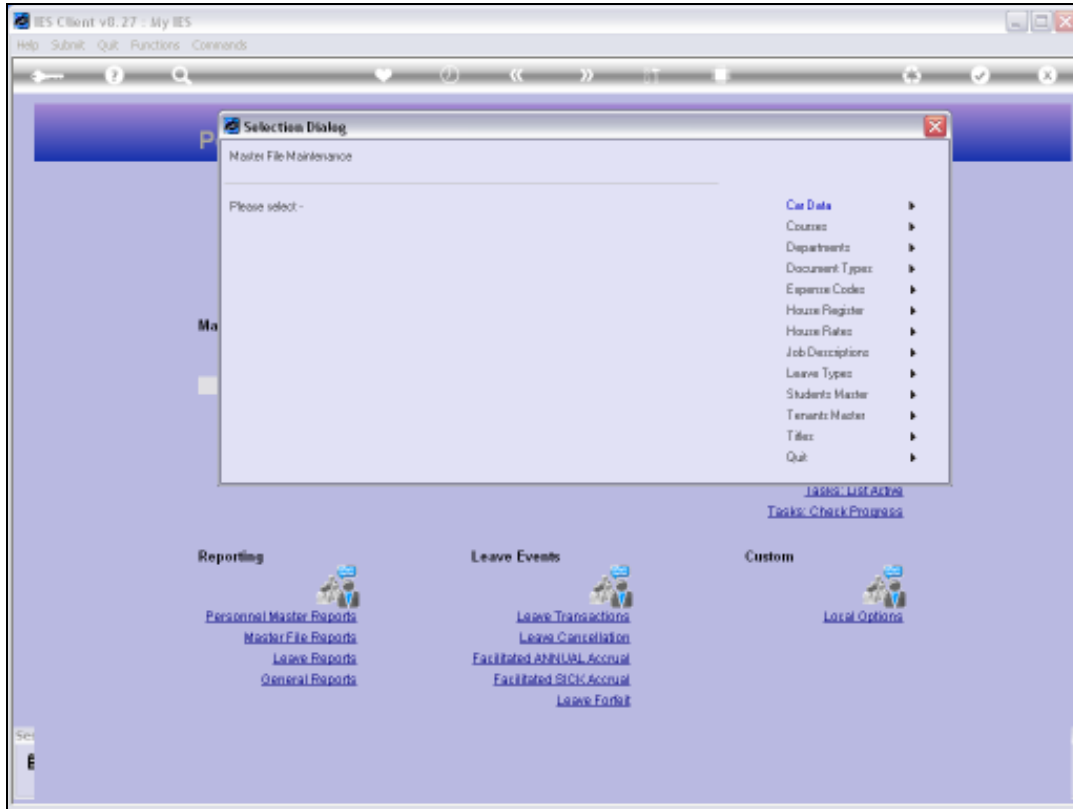
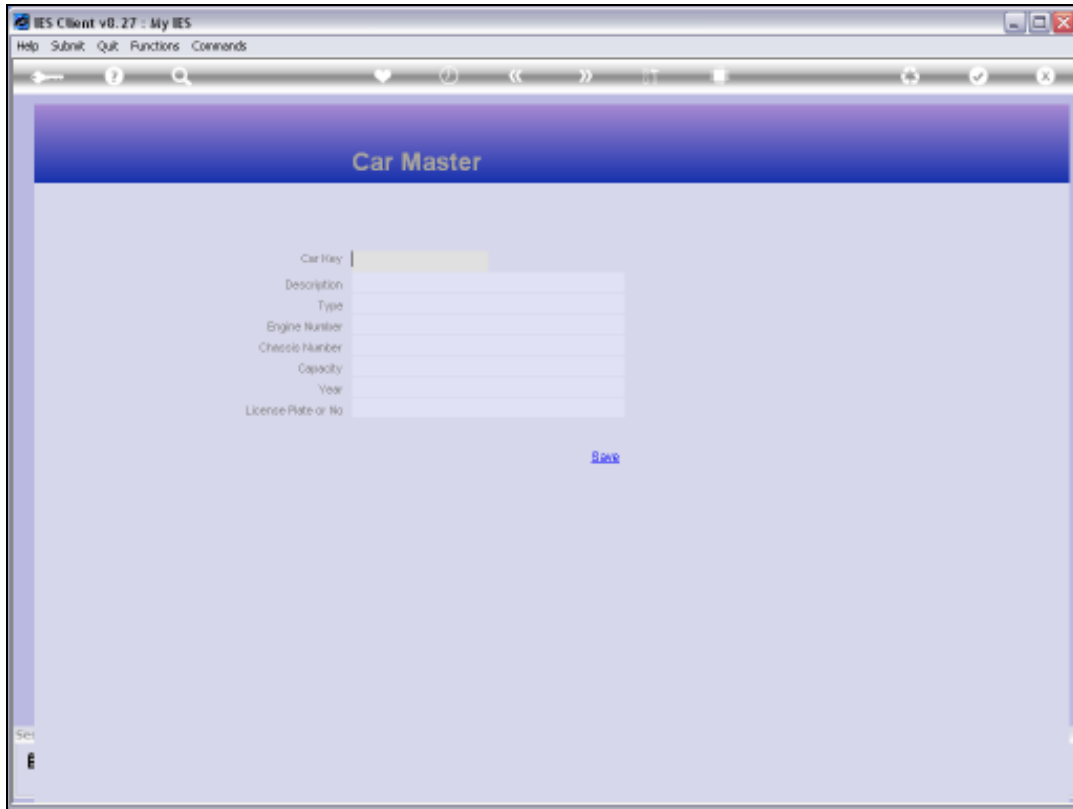


Slide 1

Slide notes: From the File Maintenance Menu, we have an option to maintain the CARS register.

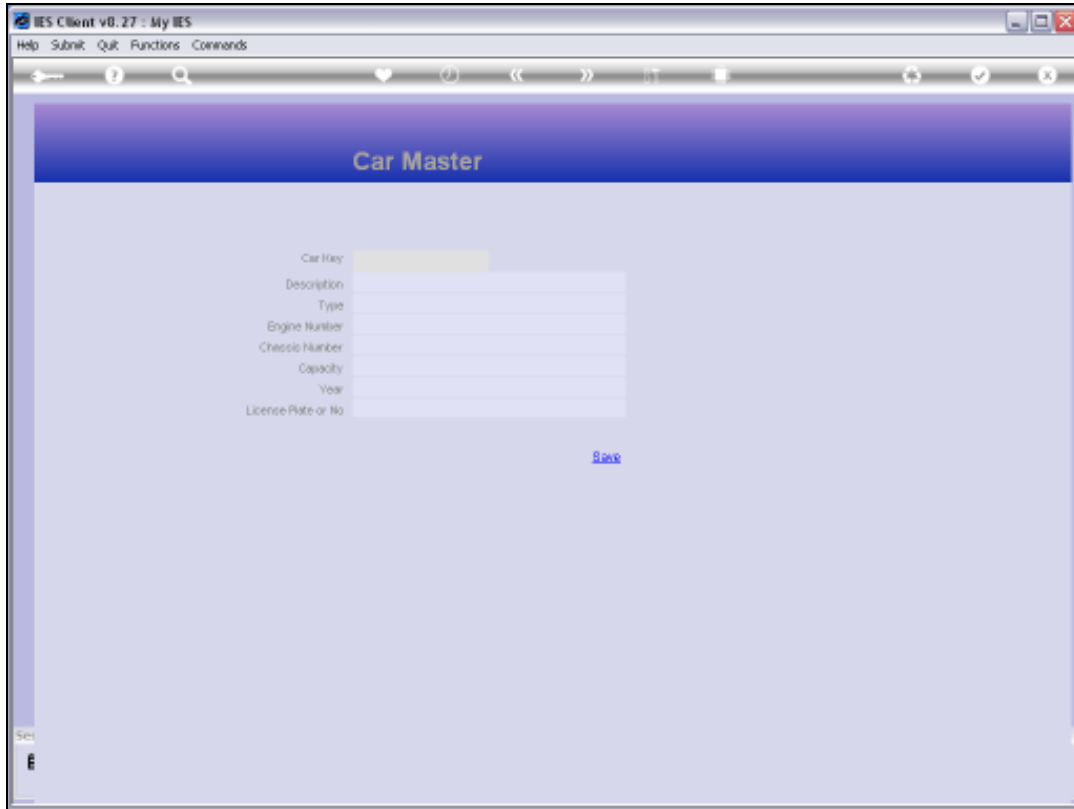


Slide 2  
Slide notes:



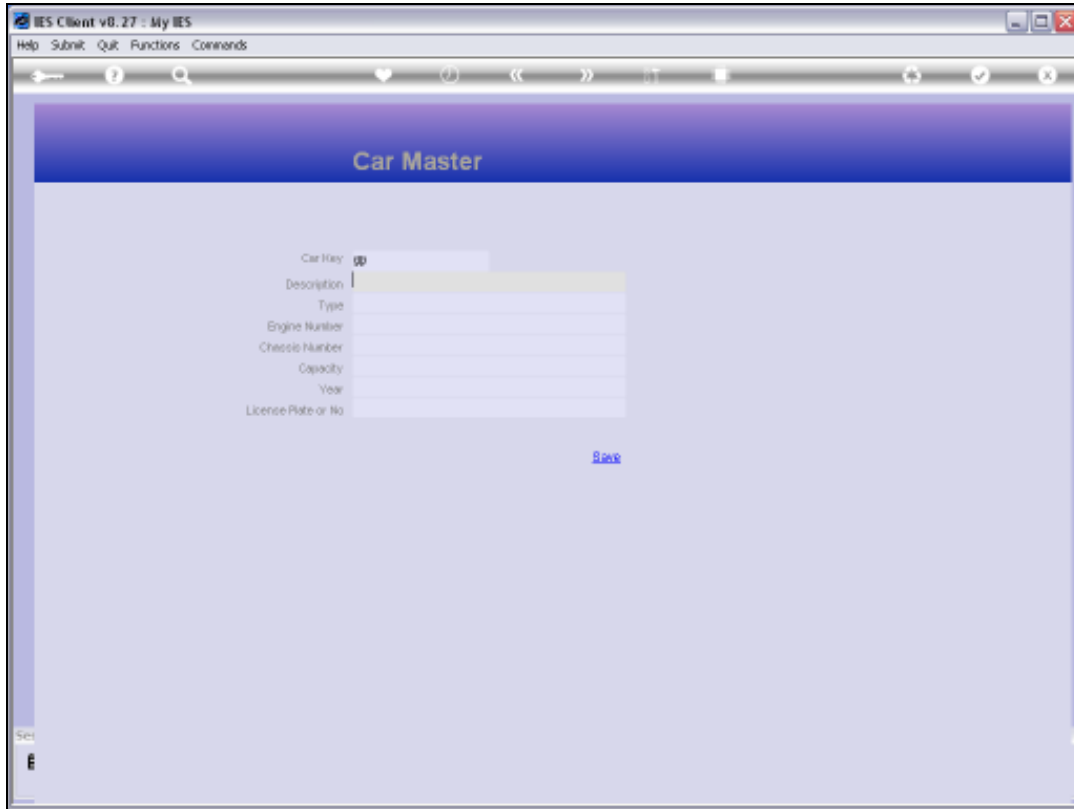
Slide 3

Slide notes: On the CARS register, we maintain details of Company Vehicles used by Employees.



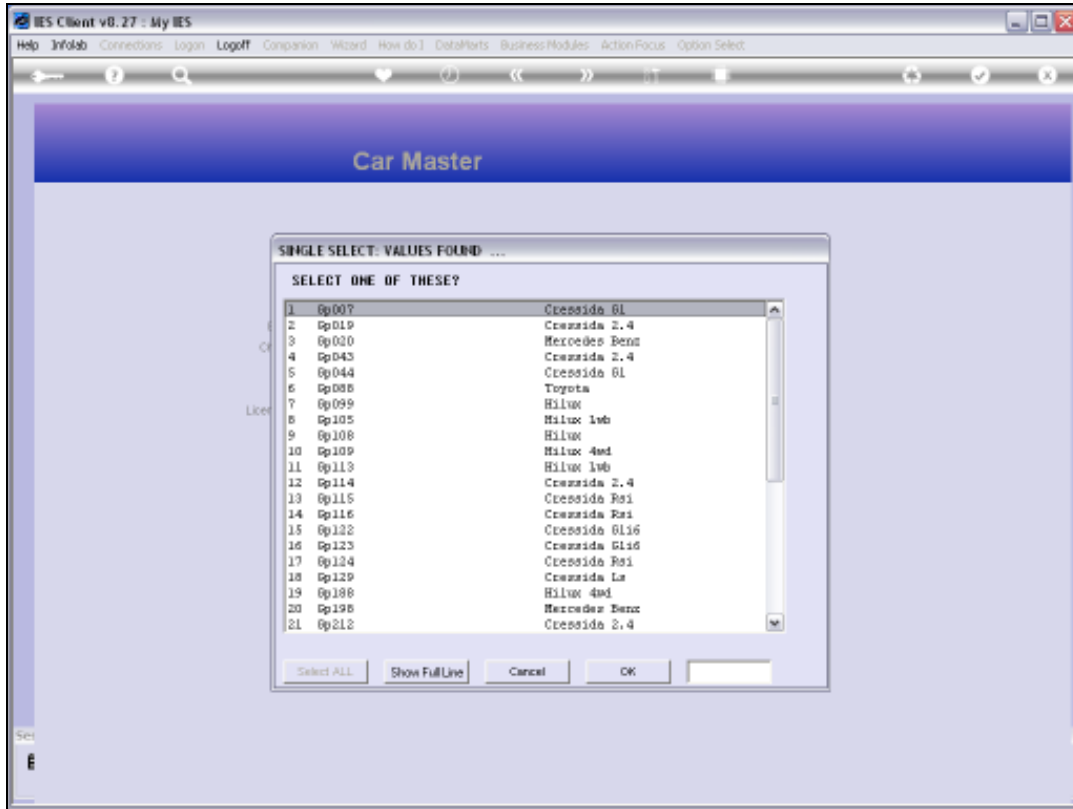
Slide 4

Slide notes:

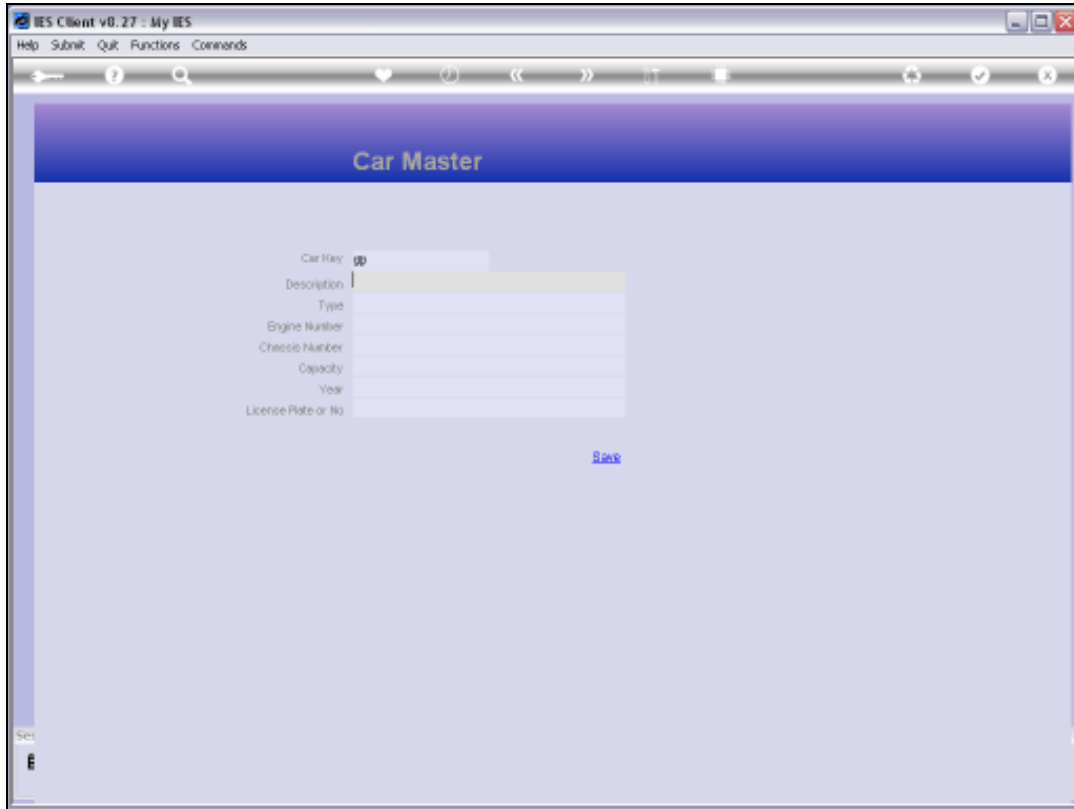


Slide 5

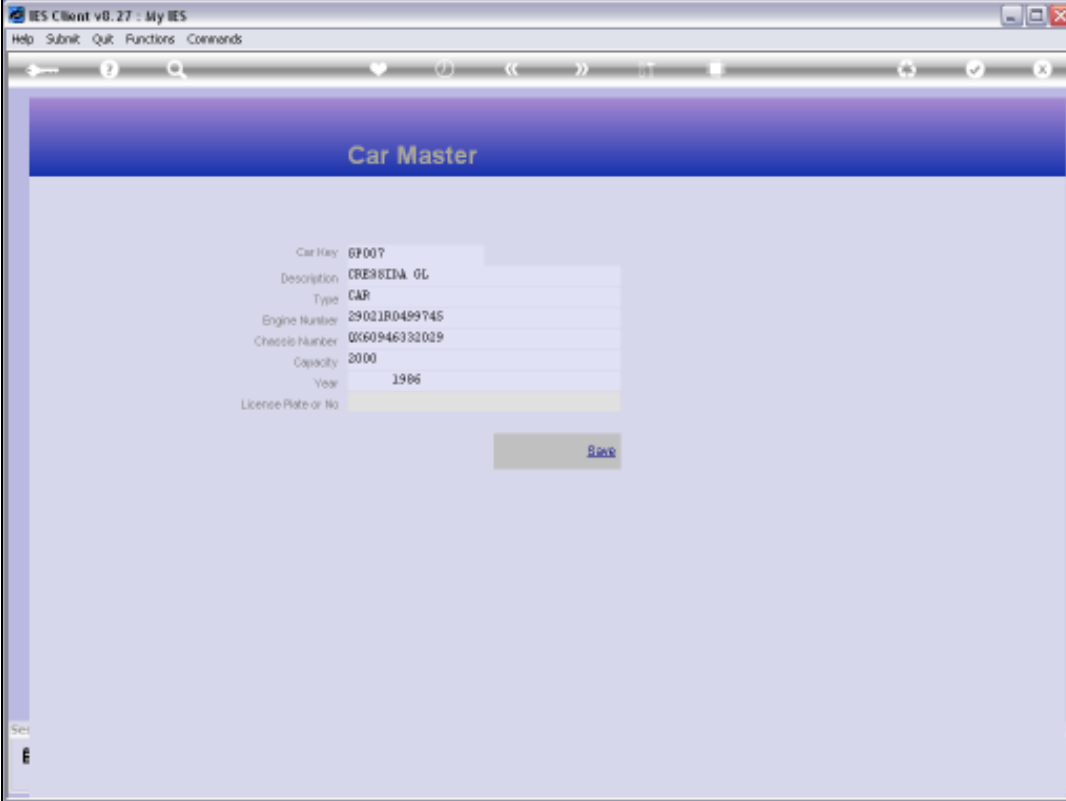
Slide notes:



Slide 6  
Slide notes:



Slide 7  
Slide notes:



The screenshot shows a web browser window titled 'IES Client v8.27 : My IES'. The browser's address bar is empty. The main content area displays a form titled 'Car Master' with a blue header. The form contains the following fields:

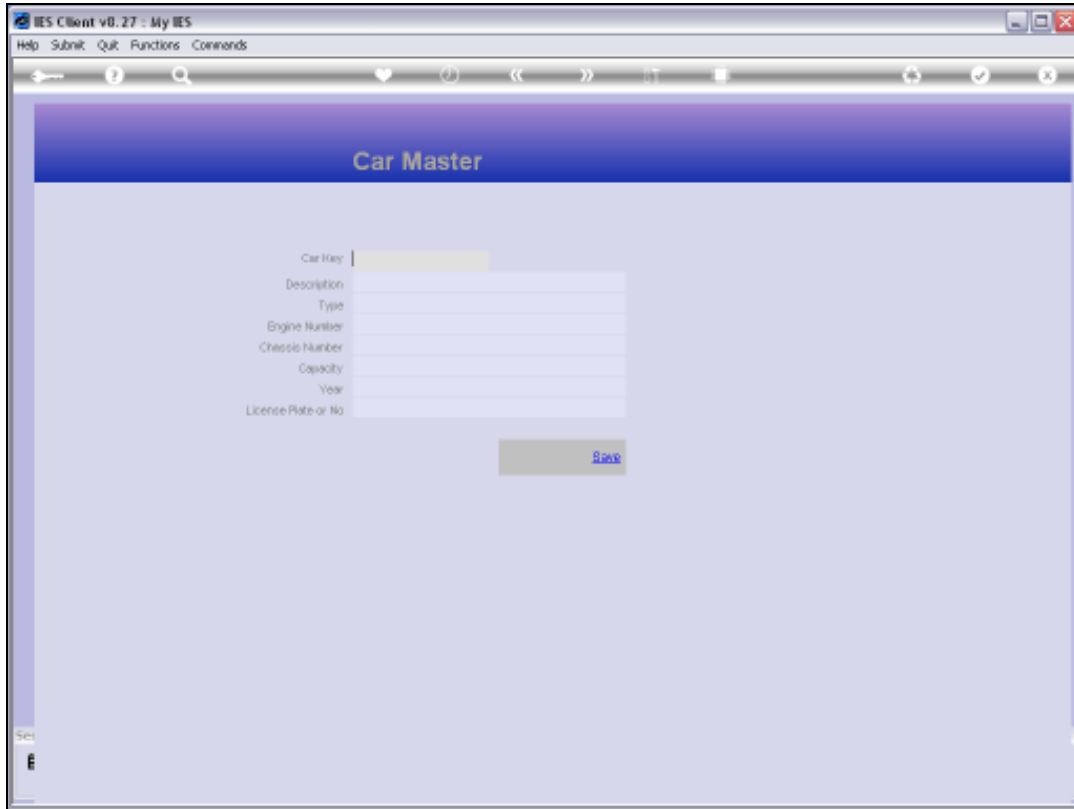
Car Key	GF007
Description	CRESTINA OL
Type	CAR
Engine Number	29021R0499745
Chassis Number	006094633029
Capacity	2000
Year	1986
License Plate or No	

Below the form is a button labeled 'Back'.

### Slide 8

Slide notes: While it may be reasonable to maintain all the fields shown, they are still optional. The Key on the Master can be of our own design, and often it is simply the License or Registration of the Vehicle.





Slide 9

Slide notes: