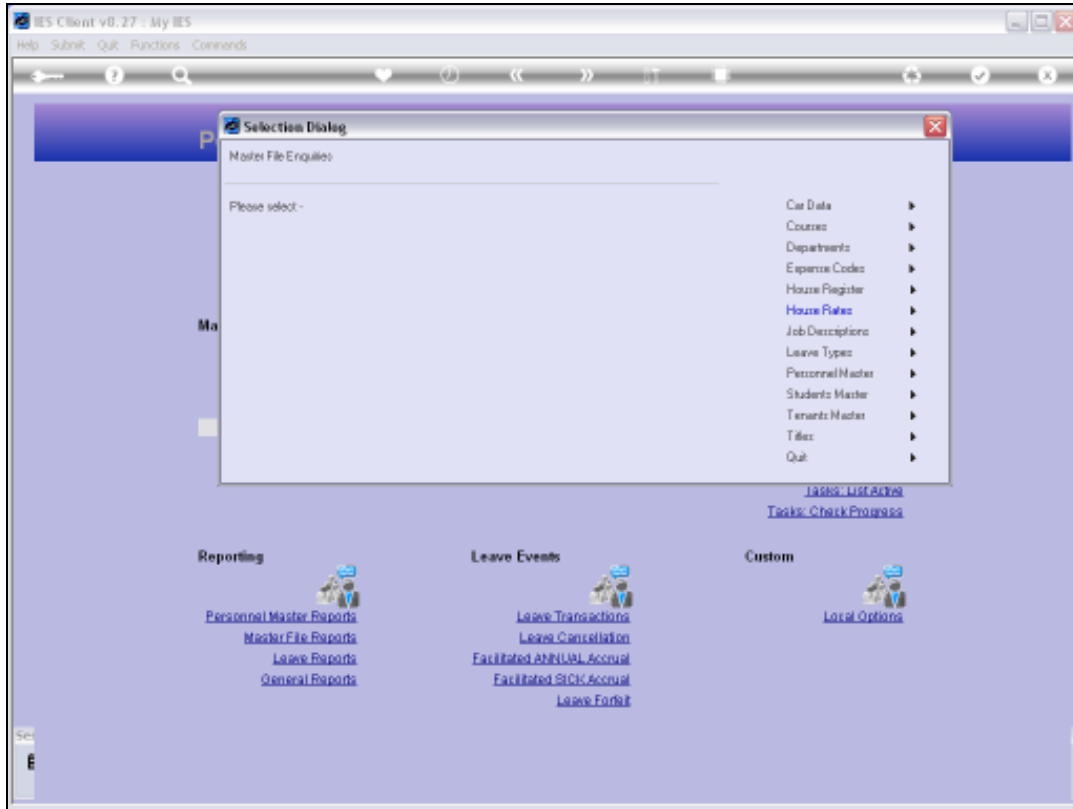
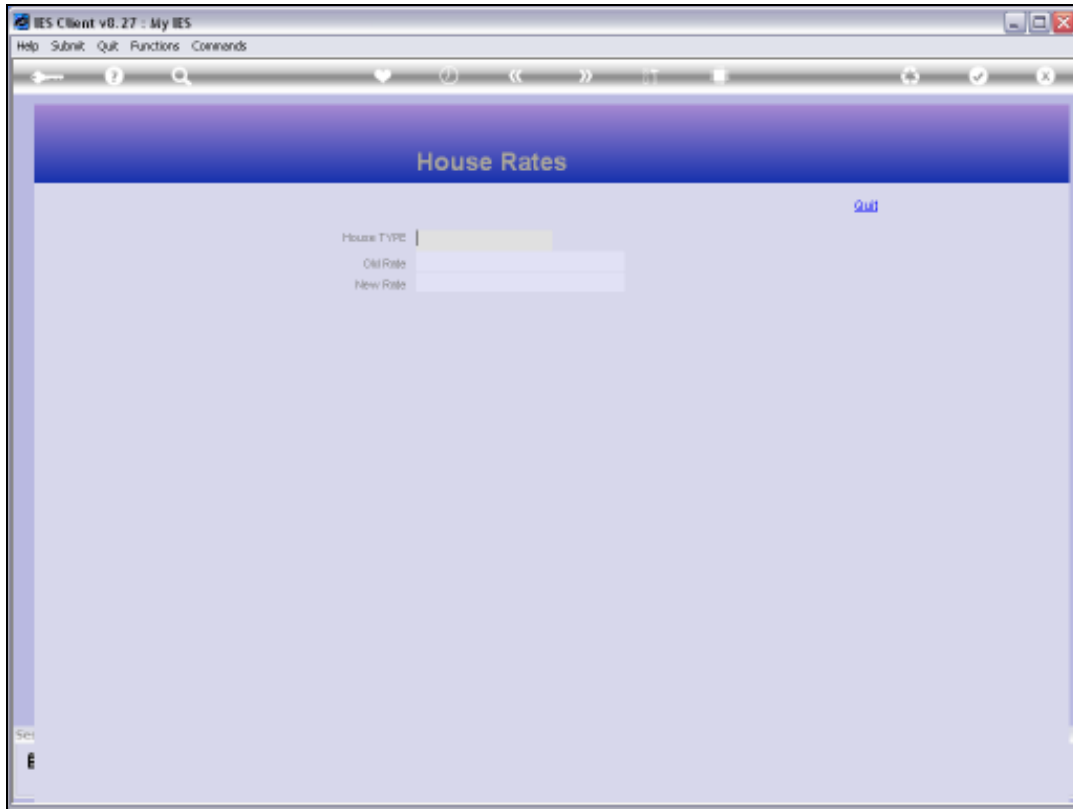


Slide 1

Slide notes: From the Master Enquiries Menu, we reach the option to query the House Rates master.

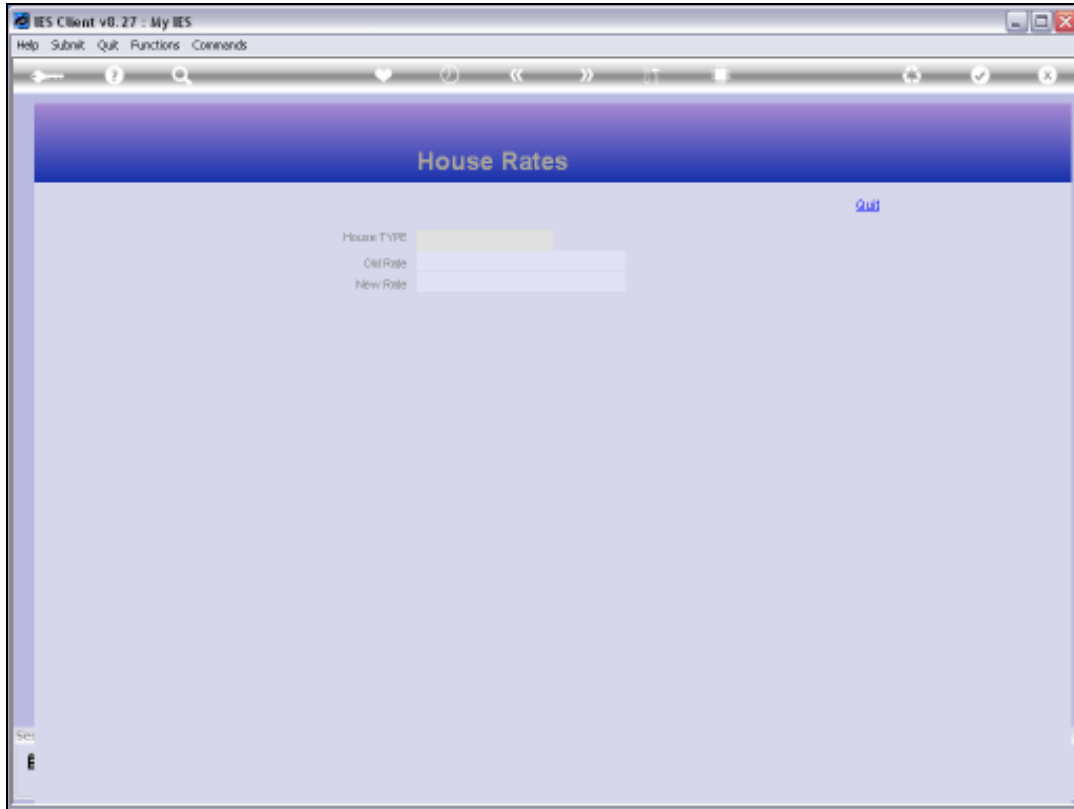


Slide 2
Slide notes:



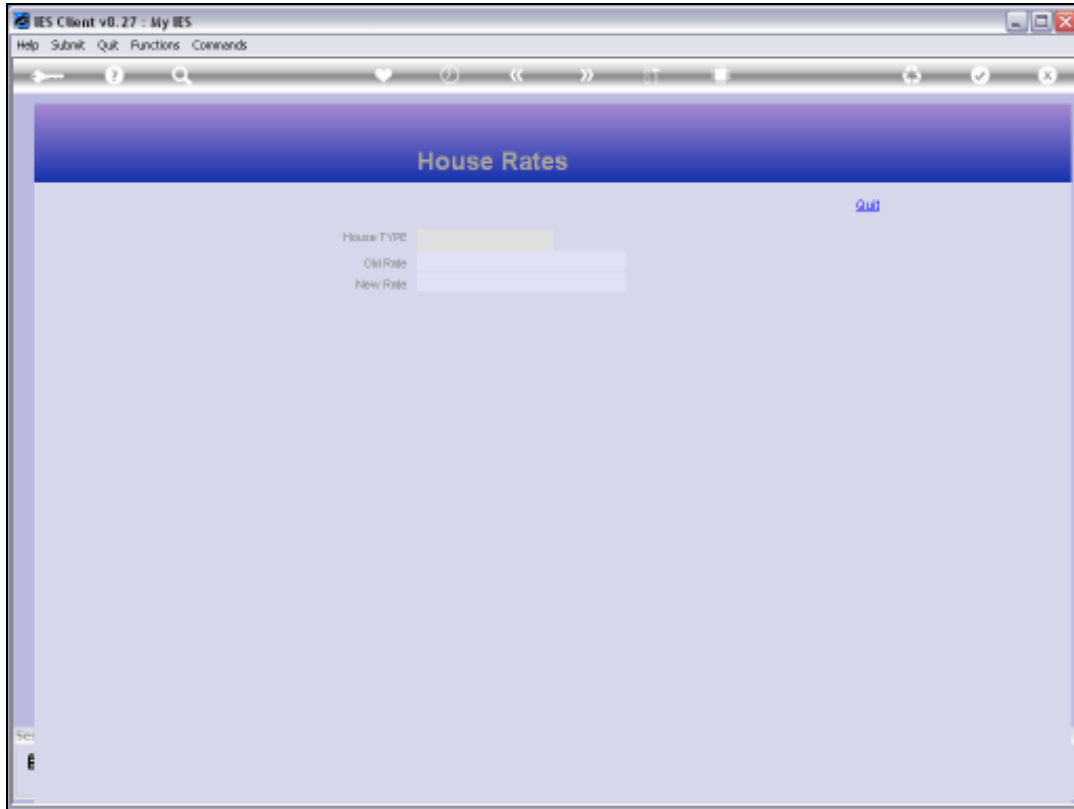
Slide 3

Slide notes:



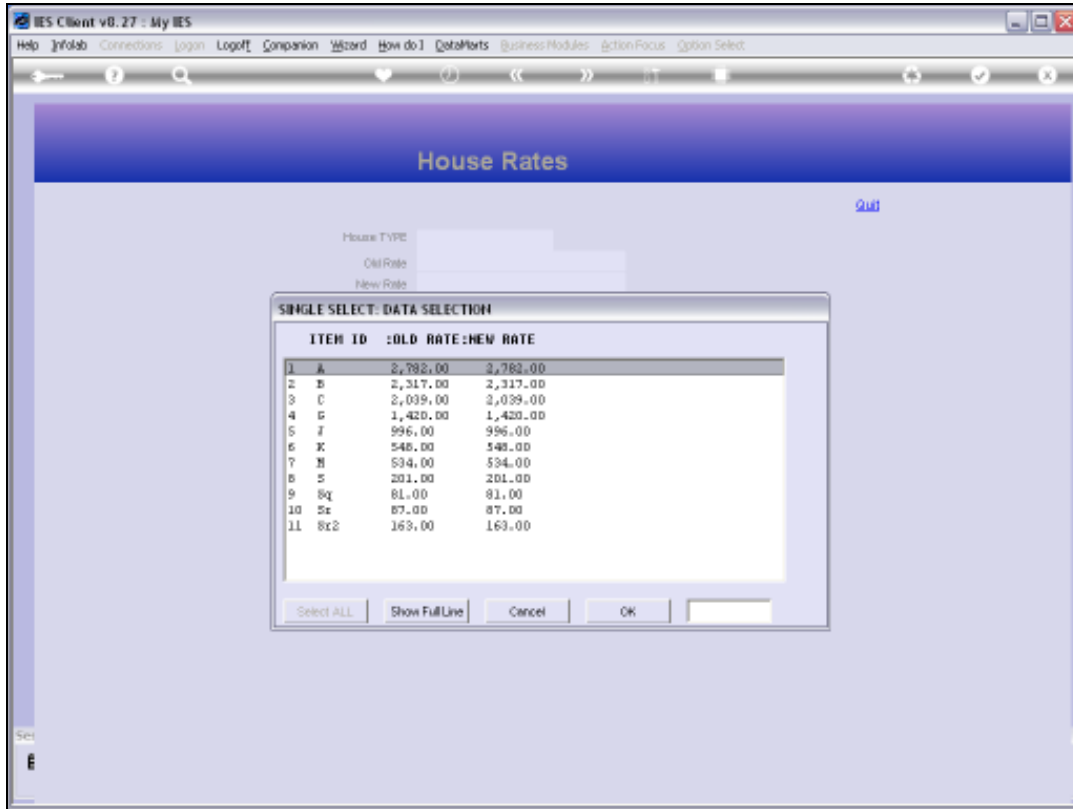
Slide 4

Slide notes:

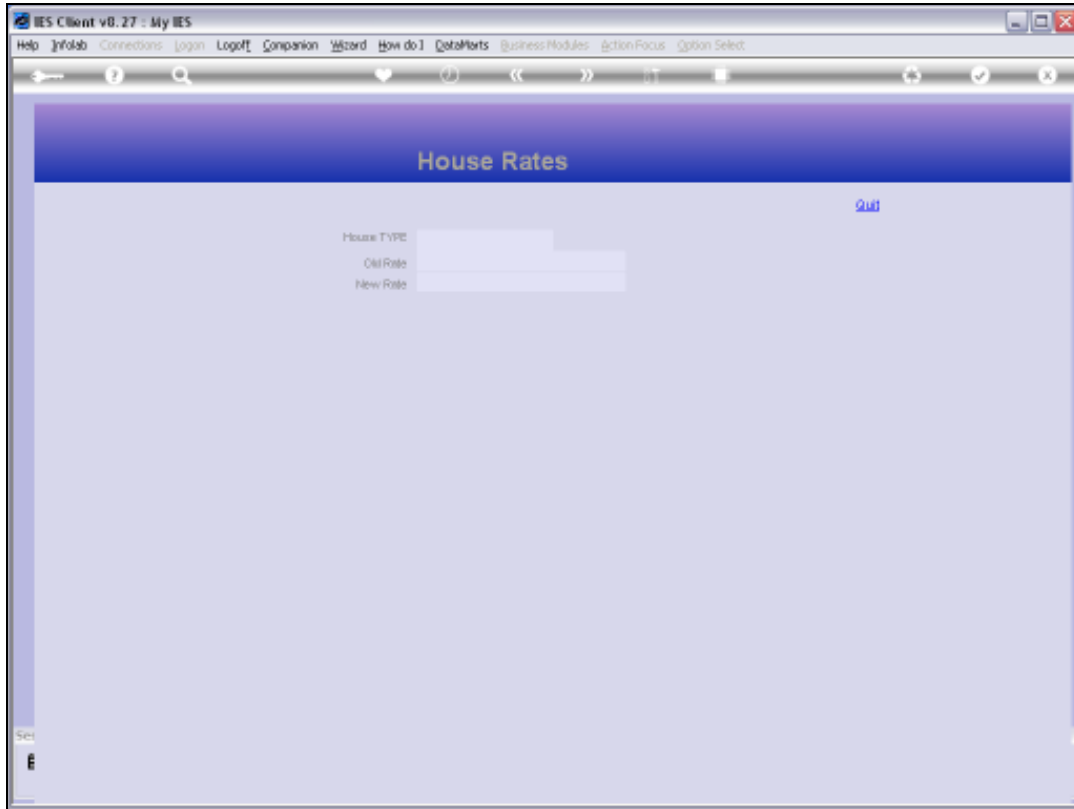


Slide 5

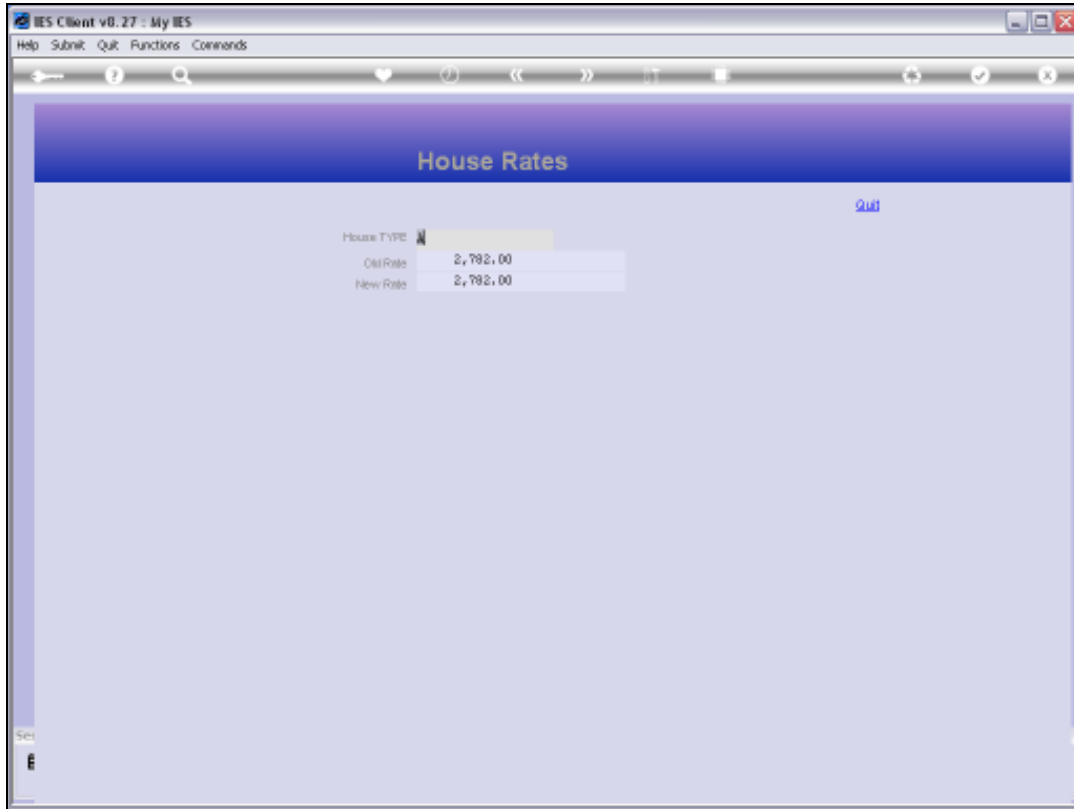
Slide notes:



Slide 6
Slide notes:



Slide 7
Slide notes:

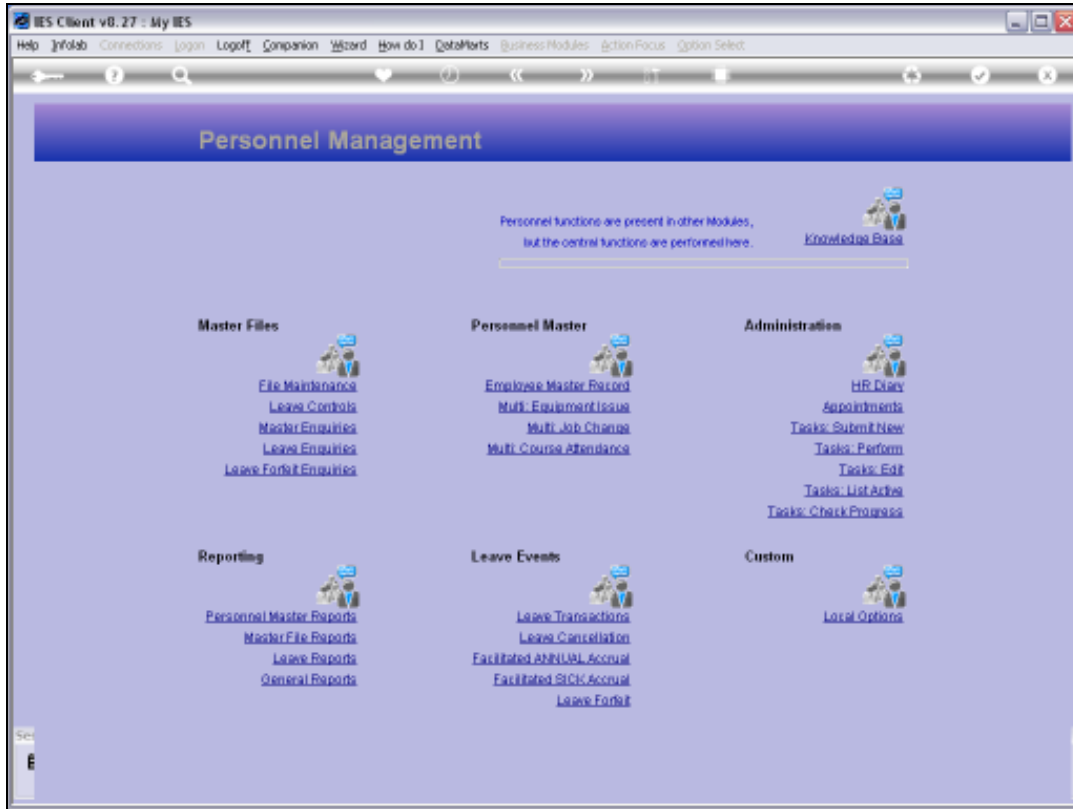


Slide 8

Slide notes: While any House Type entry may be queried, this is a 'look only' option and we cannot make any changes with this option.



Slide 9
Slide notes:



Slide 10
Slide notes: