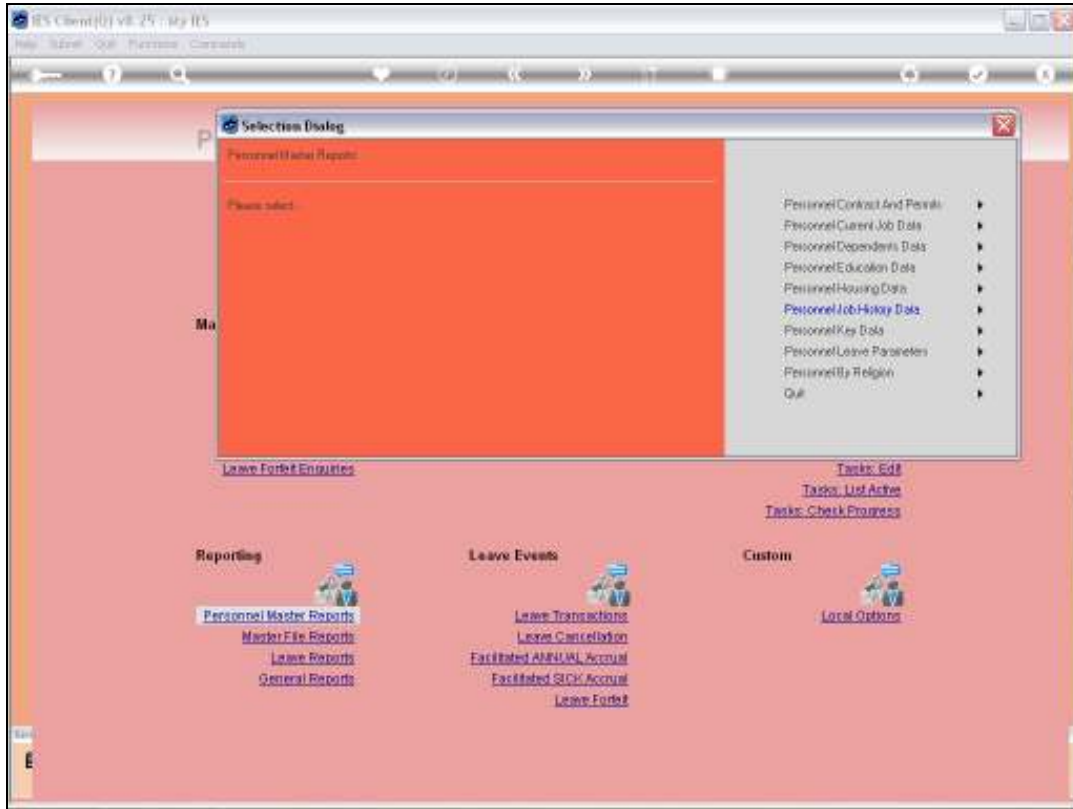
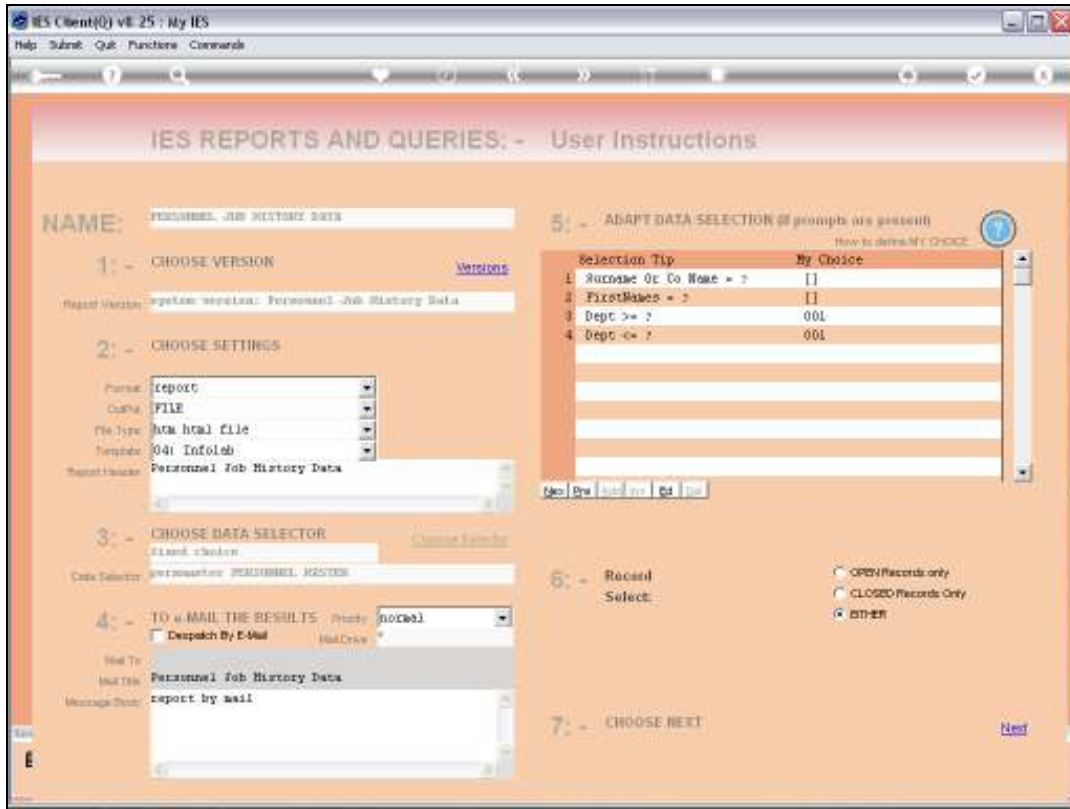


Slide 1

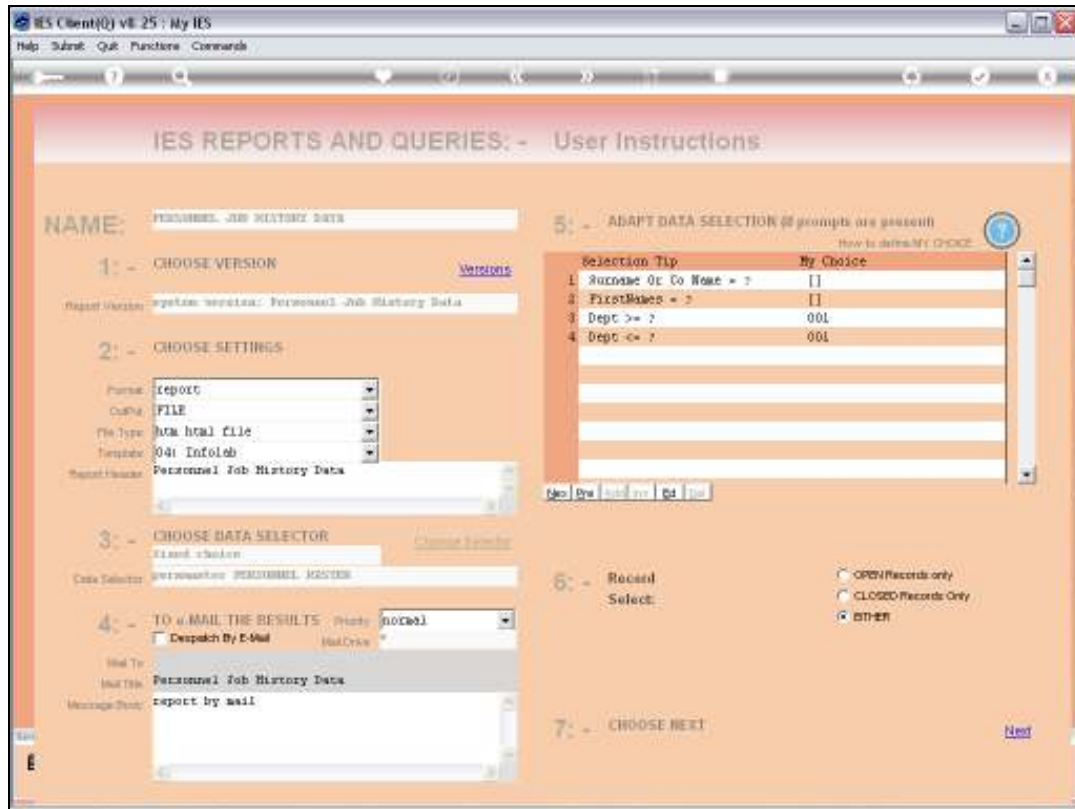
Slide notes: Among the Personnel Master Reports we find one with a focus on Job History.



Slide 2
Slide notes:



Slide 3
Slide notes:



Slide 4
Slide notes:

IES Client(0) v8.25: My IES

Help Submit Quit Functions Commands

IES REPORTS AND QUERIES: - User Instructions

NAME: PERSONNEL_JOB_HISTORY_DATA

1: - CHOOSE VERSION [Versions](#)

Report Version: System version: Personnel-Job History Data

2: - CHOOSE SETTINGS

Format:

Output:

File Type:

Template:

Report Header:

3: - CHOOSE DATA SELECTOR [Change Selection](#)

Code Selector:

4: - TO e-MAIL THE RESULTS Dispatch By E-Mail

To:

Message Body:

5: - ADAPT DATA SELECTION (8 prompts are present)
How to default CHOICE

Selection Tip	My Choice
1. Surname Of Co Name = ?	<input type="text" value=""/>
2. First Name = ?	<input type="text" value=""/>
3. Dept >= ?	<input type="text" value="001"/>
4. Dept <= ?	<input type="text" value="001"/>
	<input type="text" value=""/>
	<input type="text" value=""/>
	<input type="text" value=""/>
	<input type="text" value=""/>
	<input type="text" value=""/>
	<input type="text" value=""/>

6: - Record Select: OPEN Records only
 CLOSED Records Only
 BOTH

7: - CHOOSE NEXT [Next](#)

Slide 5

Slide notes: We may be selective as to which Employees and Departments to include in the result, and in this example we are including only 1 Department.

09:12:06 19 APR 2010 page 1

Personnel Job History Data

Key	Full Name	Department	Job Hist	Employer	Job Date	Position
1274	Garber Larry Jeffrey	10011 Personnel	Donny Hoops	Infolab	14/04/2006	Personnel Office
1174	Cooper Joseph Thomas	10011 Personnel	Infolab	Infolab	11/08/2006	Personnel Office
1010	Edwards Maria Susan	10011 Personnel	Infolab	Infolab	11/05/2004	Personnel Office
1189	Hill David Richard	10011 Personnel	Infolab	Infolab	09/08/2004	Clerk
1139	Lewis Robert Michael	10011 Personnel	Infolab	Infolab	01/12/2009	Personnel Office
1136	Martin Michelle Laura	10011 Personnel	Infolab	Infolab	14/09/2005	Clerk
					12/09/2006	HR Manager
					16/01/2007	Personnel Office

6 record(s) listed

Slide 6

Slide notes: The Report includes Job History data for selected Employees.