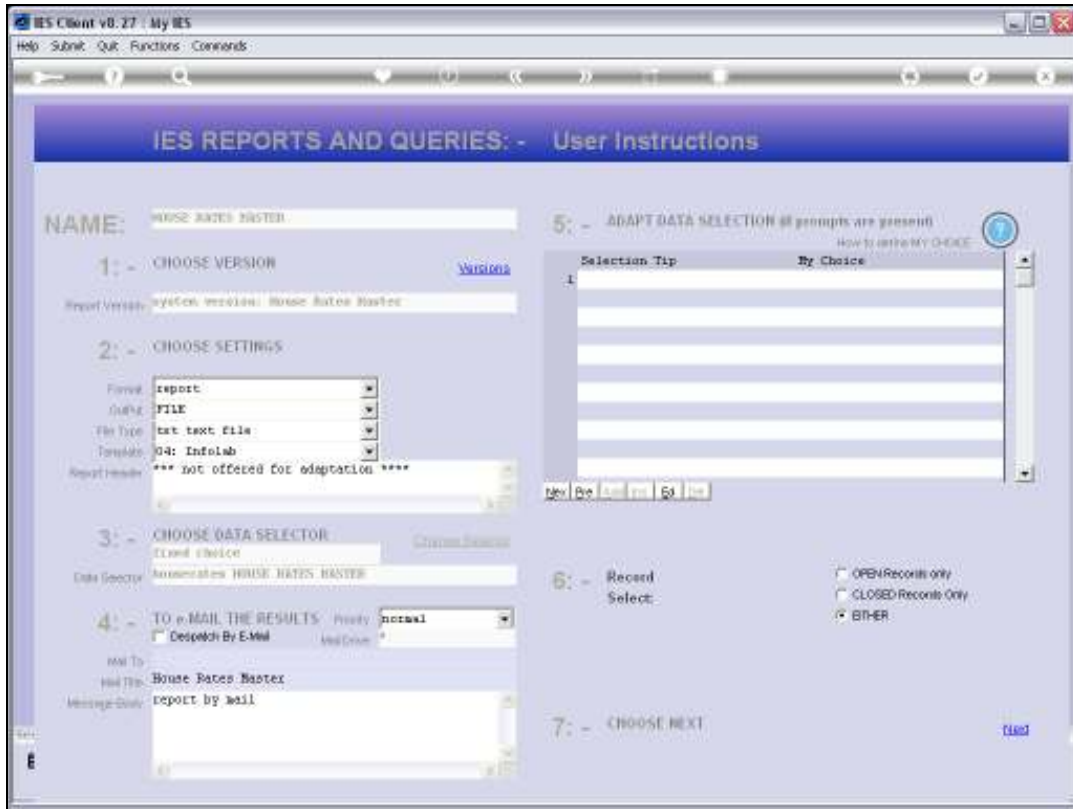


Slide 1

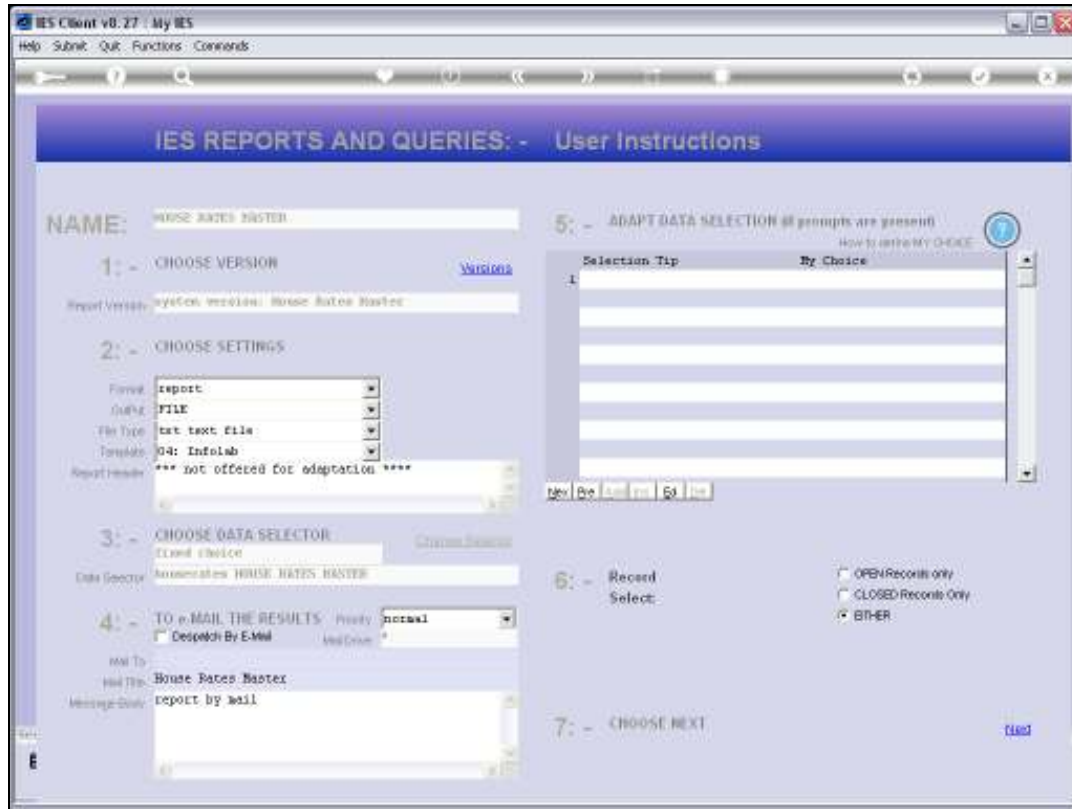
Slide notes: At the 'Master File Reports' we find a Report for House Rates. This Report is dependent on whether we maintain a Register of House Types and Rates for internal costing of Company Housing.



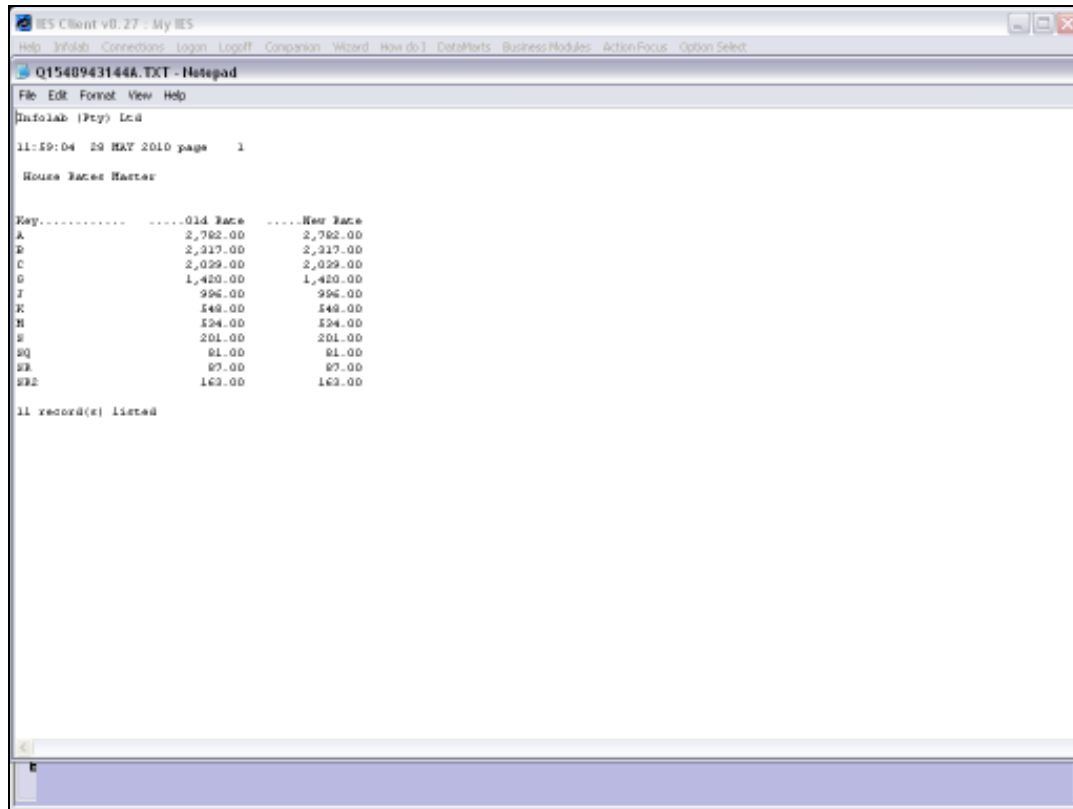
Slide 2
Slide notes:



Slide 3
Slide notes:



Slide 4
Slide notes:



The screenshot shows a window titled "IES Client v8.27 : My IES" with a menu bar including Help, InfoTab, Connections, Login, Logoff, Companion, Wizard, How do I, DataParts, BusinessModules, ActionFocus, and Option Select. Below the menu bar is a Notepad window titled "Q1540943144A.TXT - Notepad" with a menu bar (File, Edit, Format, View, Help) and a status bar (InfoTab (Fxy) Lcd). The main text area contains the following content:

```
11:59:04 29 MAY 2010 page 1

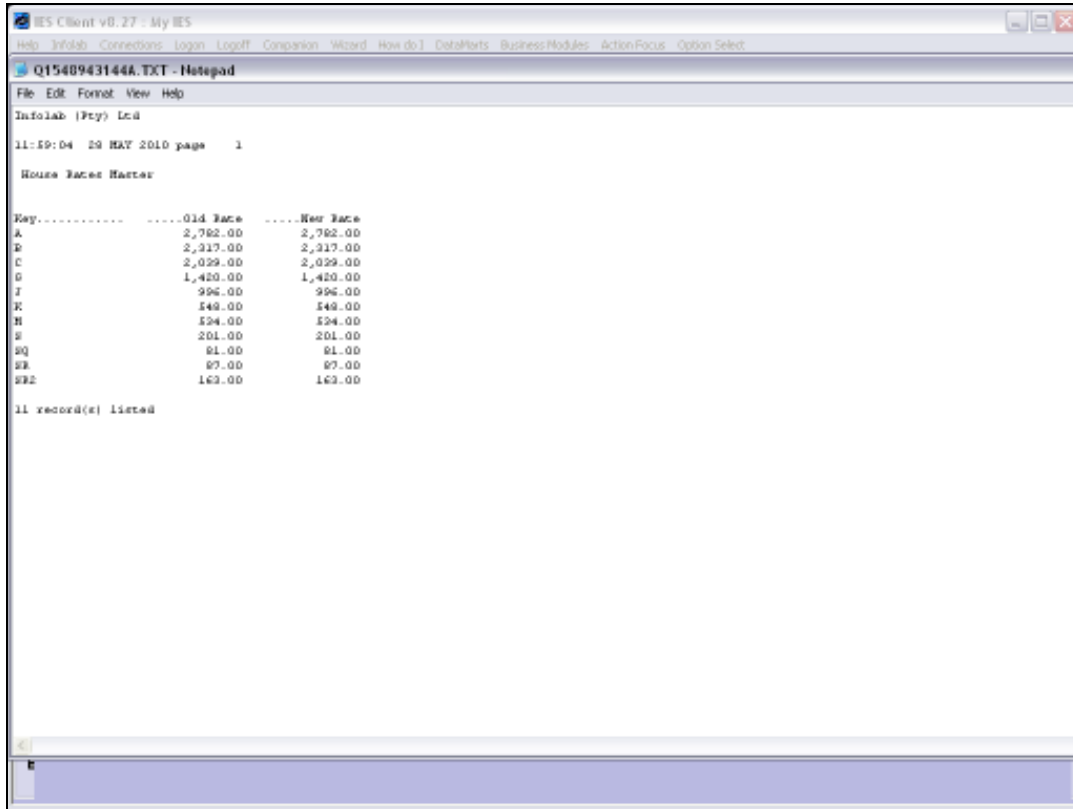
House Rates Matrix

Key.....Old Rate .....New Rate
A ..... 2,762.00 ..... 2,762.00
B ..... 2,317.00 ..... 2,317.00
C ..... 2,029.00 ..... 2,029.00
D ..... 1,420.00 ..... 1,420.00
J ..... 396.00 ..... 396.00
K ..... 148.00 ..... 148.00
H ..... 124.00 ..... 124.00
S ..... 201.00 ..... 201.00
SQ ..... 81.00 ..... 81.00
SR ..... 87.00 ..... 87.00
SR2 ..... 163.00 ..... 163.00

11 record(s) listed
```

Slide 5

Slide notes: And here is our example result.



Slide 6
Slide notes: