

IES Web Client 8.6.3 © INFOLAB 1994-2014, All Rights Reserved.

### Agriculture Physicals

Over control functions for Agriculture Physicals management, and integrated to other modules.

**Control aspects -**

- [Set up and Control](#)
- [Recovery Accts. Man](#)
- [Recovery Accts. Workshop](#)
- [Recovery Accts. Machine](#)
- [Contra Accts. KPI](#)

**Attendance records -**

- [Man attendance](#)
- [Emps on activities](#)
- [Man groups big](#)
- [Man gangs small](#)
- [Absentee codes](#)

**Journals -**

- [Physicals. Man](#)
- [Physicals. Machine](#)
- [Physicals. KPI](#)
- [Physicals. Workshop](#)
- [Physical Direct. no Resource](#)
- [Physical Direct. with Resource](#)
- [Import / Export Jnl](#)

**Reporting -**

- [Employees on activity](#)
- [Man Groups](#)
- [Man Groups incl Emps](#)
- [Man Gangs](#)
- [Man Gangs incl Emps](#)
- [Vehicles on activity](#)
- [Man posting](#)
- [Machine posting \(std\)](#)
- [Machine posting \(perf\)](#)
- [Resource Posting](#)
- [KPI posting](#)
- [Workshop posting](#)
- [Balance Listing. Resource](#)
- [Balance Listing. KPI](#)
- [Day Audit Trail. Resource](#)
- [Day Audit Trail. KPI](#)
- [Period Audit Trail. Resource](#)
- [Period Audit Trail. KPI](#)

**Perform recoveries -**

- [Costs. Man](#)
- [Costs. Workshop](#)
- [Costs. Machine](#)

**Master file maint -**

- [Vehicle register](#)
- [Workshop register](#)
- [Man Work result types](#)
- [Man Premi types](#)
- [Machine Performance Units](#)
- [Resource classes](#)
- [Resource master](#)
- [KPI master](#)
- [Admin options](#)

**Custom -**

- [Local Options](#)

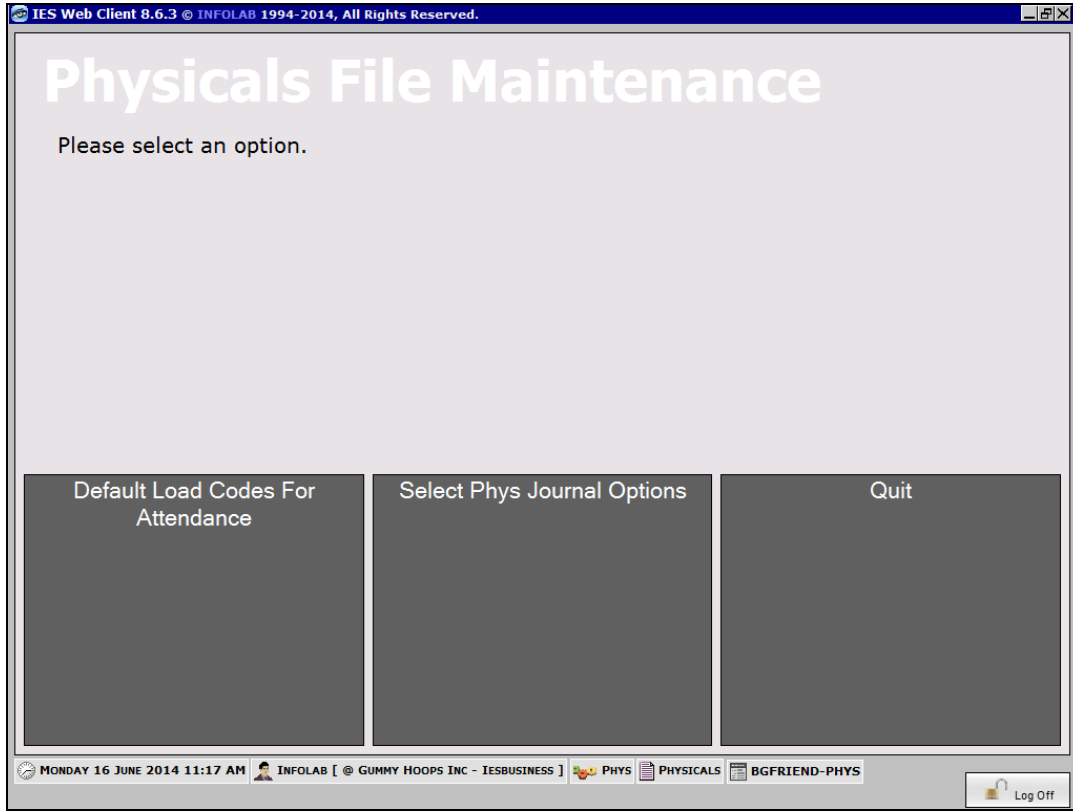
**Enquiries -**

- [Phys Jnl enquiries](#)

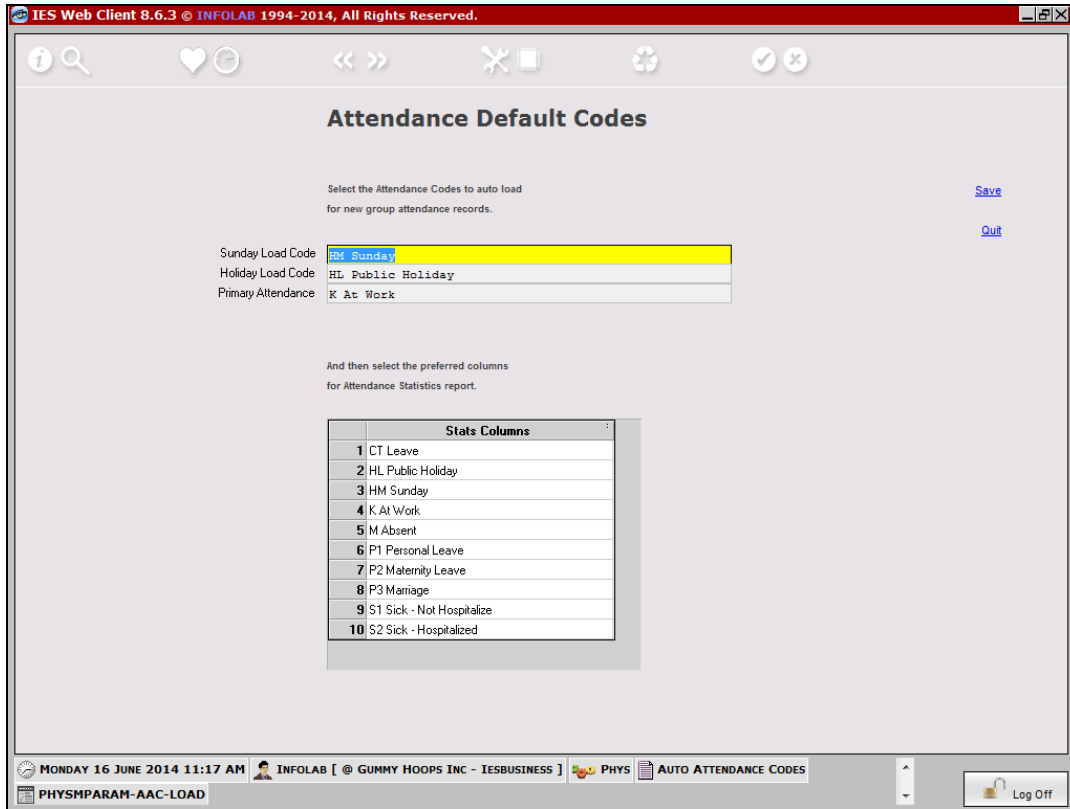
MONDAY 16 JUNE 2014 11:17 AM INFOLAB [ @ GUMMY HOOPS INC - IESBUSINESS ] PHYS PHYSICALS BGFRIEND-PHYS Log Off

Slide 1

Slide notes: We find the Default Attendance Load Codes at Set up and Control.



Slide 2  
Slide notes:



Slide 3

Slide notes: When we capture Man Attendance, we need to know which Codes are used for Sundays, Holidays and for Primary Attendance, i.e. at work. Since we may design our own codes, it is necessary to advise the system of the meanings of the different codes, in this fashion.

IES Web Client 8.6.3 © INFOLAB 1994-2014, All Rights Reserved.

### Attendance Default Codes

Select the Attendance Codes to auto load for new group attendance records. [Save](#) [Quit](#)

Sunday Load Code: HM Sunday  
Holiday Load Code: HL Public Holiday  
Primary Attendance: [dropdown menu]

And then select the preferred columns for Attendance Statistics report.

Stats Columns	
1	CT Leave
2	HL Public Holiday
3	HM Sunday
4	K At Work
5	M Absent
6	P1 Personal Leave
7	P2 Maternity Leave
8	P3 Marriage
9	S1 Sick - Not Hospitalize
10	S2 Sick - Hospitalized

MONDAY 16 JUNE 2014 11:17 AM INFOLAB [ @ GUMMY HOOPS INC - IESBUSINESS ] PHYS AUTO ATTENDANCE CODES  
PHYSMPARAM-AAC-LOAD Log Off

Slide 4

Slide notes: There is a Statistics Report for Man Attendance data, and for this we may select our preferred columns, i.e. up to 10 preferred Codes that have separate columns on the report.

IES Web Client 8.6.3 © INFOLAB 1994-2014, All Rights Reserved.

### Attendance Default Codes

Select the Attendance Codes to auto load for new group attendance records.

[Save](#)  
[Quit](#)

Sunday Load Code: HM Sunday  
Holiday Load Code: HL Public Holiday  
Primary Attendance: K At Work

And then select the preferred columns for Attendance Statistics report.

Stats Columns	
1	CT Leave
2	HL Public Holiday
3	HM Sunday
4	K At Work
5	M Absent
6	P1 Personal Leave
7	P2 Maternity Leave
8	P3 Marriage
9	S1 Sick - Not Hospitalize
10	S2 Sick - Hospitalized

Next Prev Add Ins Ed Del

MONDAY 16 JUNE 2014 11:17 AM INFOLAB [ @ GUMMY HOOPS INC - IESBUSINESS ] PHYS AUTO ATTENDANCE CODES  
PHYSMPARAM-AAC-LOAD Log Off

Slide 5  
Slide notes: