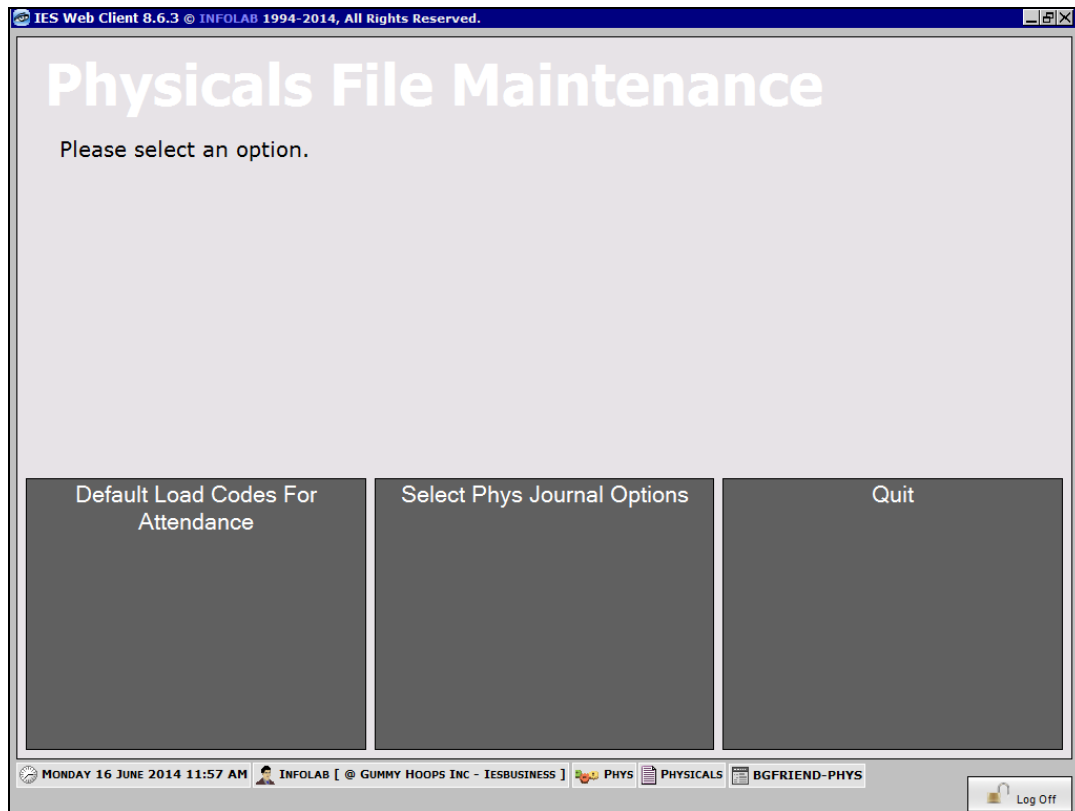


Slide 1

Slide notes: For the processing of Physicals Journals, we need to set the standards that will be applied in Physicals Journal processing. We find the option to do this at Set up and Control.



Slide 2

Slide notes:

IES Web Client 8.6.3 © INFOLAB 1994-2014, All Rights Reserved.

Physical Journals: Selected Options

Please select the standard Journal Option for each type.

[Save](#)
[Out](#)

Man: -

Physicals Man Journal **3: Work Result, Premi, Overtime**

Cost Type with Jobs ☐ Auto KPI (Man)

Machine: -

Physicals Machine Journal **3: GL / Job allo, plus Perf unit**

☐ Auto KPI (Machine)

KPI: -

Physicals KPI Journal **2: Allocation by GL Account Code**

Workshop: -

Physicals Workshop Journal **1: Standard**

Resource Class Checks

☒ Disable Resource Checking

Journal Export: -

Export Name

MONDAY 16 JUNE 2014 11:57 AM INFOLAB [@ GUMMY HOOPS INC - IESBUSINESS] PHYS SELECT PHYS JOURNAL OPTIONS

PHYSMPARAM-JNLS

Slide 3

Slide notes:

IES Web Client 8.6.3 © INFOLAB 1994-2014, All Rights Reserved.

Physical Journals: Selected Options

Please select the standard Journal Option for each type.

[Save](#)
[Quit](#)

Man: -

Physicals Man Journal: 3: Work Result, Premi, Overtime

Cost Type with Jobs: 1: Maximum Defaults
2: Minimum Defaults
3: Work Result, Premi, Overtime

Machine: -

Physicals Machine Journal: 3: GL / Job allo, plus Perf unit

KPI: - ☐ Auto KPI (Machine)

Physicals KPI Journal: 2: Allocation by GL Account Code

Workshop: -

Physicals Workshop Journal: 1: Standard

Resource Class Checks

☒ Disable Resource Checking

Journal Export: -

Export Name: Section 12

MONDAY 16 JUNE 2014 11:57 AM INFOLAB [@ GUMMY HOOPS INC - IESBUSINESS] PHYS SELECT PHYS JOURNAL OPTIONS

PHYSMPARAM-JNLS Log Off

Slide 4

Slide notes: For Man Journals, we have 3 choices. The first 2 are only used if we use Standard Costing for Man Resources, i.e. recharging at a set average rate. Most often used though, is for Recoveries to be calculated from the Payroll, and in this case, we will choose option 3 that includes Work Result, Premi, Overtime and other indicators on the Man Journals.

IES Web Client 8.6.3 © INFOLAB 1994-2014, All Rights Reserved.

Physical Journals: Selected Options

Please select the standard Journal Option for each type.

[Save](#)
[Out](#)

Man: -

Physicals Man Journal **3: Work Result, Premi, Overtime**

Cost Type with Jobs ☐ Auto KPI (Man)

Machine: -

Physicals Machine Journal **3: GL / Job allo, plus Perf unit**

☐ Auto KPI (Machine)

KPI: -

Physicals KPI Journal **2: Allocation by GL Account Code**

Workshop: -

Physicals Workshop Journal **1: Standard**

Resource Class Checks

☒ Disable Resource Checking

Journal Export: -

Export Name

MONDAY 16 JUNE 2014 11:57 AM INFOLAB [@ GUMMY HOOPS INC - IESBUSINESS] PHYS SELECT PHYS JOURNAL OPTIONS

PHYSMPARAM-JNLS

Slide 5

Slide notes: With option 3 above, it is allowed to allocate to GL or Jobs & GL. For the Jobs, we need to standardize on our choice of Cost Type for allocation to Jobs, and typically it will be a Labor type of Cost Type that we have already defined.

IES Web Client 8.6.3 © INFOLAB 1994-2014, All Rights Reserved.

Physical Journals: Selected Options

Please select the standard Journal Option for each type.

[Save](#)
[Out](#)

Man: -

Physicals Man Journal: 3: Work Result, Premi, Overtime

Cost Type with Jobs: ☐ Auto KPI (Man)

Machine: -

Physicals Machine Journal: 3: GL / Job allo, plus Perf unit

☐ Auto KPI (Machine)

KPI: -

Physicals KPI Journal: 2: Allocation by GL Account Code

Workshop: -

Physicals Workshop Journal: 1: Standard

Resource Class Checks

☒ Disable Resource Checking

Journal Export: -

Export Name: Section 12

MONDAY 16 JUNE 2014 11:57 AM INFOLAB [@ GUMMY HOOPS INC - IESBUSINESS] PHYS SELECT PHYS JOURNAL OPTIONS

PHYSMPARAM-JNLS

Log Off

Slide 6

Slide notes:

IES Web Client 8.6.3 © INFOLAB 1994-2014, All Rights Reserved.

Physical Journals: Selected Options

Please select the standard Journal Option for each type.

[Save](#)
[Out](#)

Man: -

Physicals Man Journal: 3: Work Result, Premi, Overtime

Cost Type with Jobs: LAB Labor ☒ Auto KPI (Man)

Machine: -

Physicals Machine Journal: 3: GL / Job allo, plus Perf unit

KPI: - ☐ Auto KPI (Machine)

Physicals KPI Journal: 2: Allocation by GL Account Code

Workshop: -

Physicals Workshop Journal: 1: Standard

Resource Class Checks

☒ Disable Resource Checking

Journal Export: -

Export Name: Section 12

MONDAY 16 JUNE 2014 11:57 AM INFOLAB [@ GUMMY HOOPS INC - IESBUSINESS] PHYS SELECT PHYS JOURNAL OPTIONS

PHYSMPARAM-JNLS Log Off

Slide 7

Slide notes: The Auto KPI option may be used to process a KPI for each Man Journal line, always to the same allocation as the labor. This does not suit in all cases, and the recommended option is not to use this, but instead to use the more flexible KPI & Resource processing options from the Man Work Result Type set up.

IES Web Client 8.6.3 © INFOLAB 1994-2014, All Rights Reserved.

Physical Journals: Selected Options

Please select the standard Journal Option for each type.

[Save](#)
[Quit](#)

Man: -

Physicals Man Journal: 3: Work Result, Premi, Overtime

Cost Type with Jobs: LAB Labor ☐ Auto KPI (Man)

Machine: -

Physicals Machine Journal: 3: GL / Job allo, plus Perf unit

☐ Auto KPI (Machine)

KPI: -

Physicals KPI Journal: 2: Allocation by GL Account Code

Workshop: -

Physicals Workshop Journal: 1: Standard

Resource Class Checks

☒ Disable Resource Checking

Journal Export: -

Export Name: Section 12

MONDAY 16 JUNE 2014 11:57 AM INFOLAB [@ GUMMY HOOPS INC - IESBUSINESS] PHYS SELECT PHYS JOURNAL OPTIONS

PHYSMPARAM-JNLS Log Off

Slide 8

Slide notes:

IES Web Client 8.6.3 © INFOLAB 1994-2014, All Rights Reserved.

Physical Journals: Selected Options

Please select the standard Journal Option for each type.

[Save](#)
[Quit](#)

Man: -

Physicals Man Journal: 3: Work Result, Premi, Overtime

Cost Type with Jobs: LAB Labor ☐ Auto KPI (Man)

Machine: -

Physicals Machine Journal: 3: GL / Job allo, plus Perf unit
1: Meter Start/Stop, Max Defaults
2: Time From/To, Max Defaults
3: GL / Job allo, plus Perf unit

Physicals KPI Journal: 2: Allocation by GL Account Code

Workshop: -

Physicals Workshop Journal: 1: Standard

Resource Class Checks

☒ Disable Resource Checking

Journal Export: -

Export Name: Section 12

MONDAY 16 JUNE 2014 11:57 AM INFOLAB [@ GUMMY HOOPS INC - IESBUSINESS] PHYS SELECT PHYS JOURNAL OPTIONS

PHYSMPARAM-JNLS Log Off

Slide 9

Slide notes: For Machine / Job journals, we also have 3 options, and our choice is largely dependent on how the Allocation will be selected. With the 1st 2 options, Machine Journals can only be allocated to GL, and the Allocation is always derived from Dept, Activity and Cost Center. With option 3, the recommended option, we can allocate to GL or to Jobs & GL for any line, and the Allocation is by Operator choice. Option 3 also includes capturing of a Performance Unit.

IES Web Client 8.6.3 © INFOLAB 1994-2014, All Rights Reserved.

Physical Journals: Selected Options

Please select the standard Journal Option for each type.

Man: -

Physicals Man Journal

3: Work Result, Premi, Overtime

Cost Type with Jobs

LAB Labor

☐ Auto KPI (Man)

Machine: -

Physicals Machine Journal

3: GL / Job allo, plus Perf unit

KPI: -

Physicals KPI Journal

2: Allocation by GL Account Code

Workshop: -

Physicals Workshop Journal

1: Standard

Resource Class Checks

☒ Disable Resource Checking

Journal Export: -

Export Name

Section 12

Save

Quit

MONDAY 16 JUNE 2014 11:57 AM

INFOLAB [@ GUMMY HOOPS INC - IESBUSINESS]

PHYS

SELECT PHYS JOURNAL OPTIONS

PHYSMPARAM-JNLS

Log Off

Slide 10

Slide notes:

IES Web Client 8.6.3 © INFOLAB 1994-2014, All Rights Reserved.

Physical Journals: Selected Options

Please select the standard Journal Option for each type.

[Save](#)
[Quit](#)

Man: -

Physicals Man Journal: 3: Work Result, Premi, Overtime

Cost Type with Jobs: LAB Labor ☐ Auto KPI (Man)

Machine: -

Physicals Machine Journal: 3: GL / Job allo, plus Perf unit

KPI: - ☒ Auto KPI (Machine)

Physicals KPI Journal: 2: Allocation by GL Account Code

Workshop: -

Physicals Workshop Journal: 1: Standard

Resource Class Checks

☒ Disable Resource Checking

Journal Export: -

Export Name: Section 12

MONDAY 16 JUNE 2014 11:57 AM INFOLAB [@ GUMMY HOOPS INC - IESBUSINESS] PHYS SELECT PHYS JOURNAL OPTIONS

PHYSMPARAM-JNLS Log Off

Slide 11

Slide notes: The Auto KPI principle is similar to the case of Man Journals. If we use it, then all Journal lines will result in an auto KPI posting on the main Allocation for the line. With option 3 for the Journal type, it is recommended to rather use the more flexible KPI & Resource posting options from the Machine Performance Unit set up, as the Machine Performance Unit is included with this Journal type.

IES Web Client 8.6.3 © INFOLAB 1994-2014, All Rights Reserved.

Physical Journals: Selected Options

Please select the standard Journal Option for each type.

[Save](#)
[Quit](#)

Man: -

Physicals Man Journal: 3: Work Result, Premi, Overtime

Cost Type with Jobs: LAB Labor ☐ Auto KPI (Man)

Machine: -

Physicals Machine Journal: 3: GL / Job allo, plus Perf unit

☒ Auto KPI (Machine)

KPI: -

Physicals KPI Journal: 2: Allocation by GL Account Code

Workshop: -

Physicals Workshop Journal: 1: Standard

Resource Class Checks

☒ Disable Resource Checking

Journal Export: -

Export Name: Section 12

MONDAY 16 JUNE 2014 11:57 AM INFOLAB [@ GUMMY HOOPS INC - IESBUSINESS] PHYS SELECT PHYS JOURNAL OPTIONS

PHYSMPARAM-JNLS Log Off

Slide 12

Slide notes:

IES Web Client 8.6.3 © INFOLAB 1994-2014, All Rights Reserved.

Physical Journals: Selected Options

Please select the standard Journal Option for each type.

[Save](#)
[Out](#)

Man: -

Physicals Man Journal: 3: Work Result, Premi, Overtime

Cost Type with Jobs: LAB Labor ☐ Auto KPI (Man)

Machine: -

Physicals Machine Journal: 3: GL / Job allo, plus Perf unit ☐ Auto KPI (Machine)

KPI: -

Physicals KPI Journal: 2: Allocation by GL Account Code
1: Allocation by Dep, Activ, CostCen
2: Allocation by GL Account Code

Workshop: -

Physicals Workshop Journal: 1: Standard

Resource Class Checks

☒ Disable Resource Checking

Journal Export: -

Export Name: Section 12

MONDAY 16 JUNE 2014 11:57 AM INFOLAB [@ GUMMY HOOPS INC - IESBUSINESS] PHYS SELECT PHYS JOURNAL OPTIONS

PHYSMPARAM-JNLS Log Off

Slide 13

Slide notes: The choice for KPI journal type is determined by how the Allocation is selected. With option 1, the allocation is derived from Dept, Activity and Cost Center, and with option 2, the recommended option, the GL allocation is by Operator choice.

IES Web Client 8.6.3 © INFOLAB 1994-2014, All Rights Reserved.

Physical Journals: Selected Options

Please select the standard Journal Option for each type.

[Save](#)
[Quit](#)

Man: -

Physicals Man Journal: 3: Work Result, Premi, Overtime

Cost Type with Jobs: LAB Labor ☐ Auto KPI (Man)

Machine: -

Physicals Machine Journal: 3: GL / Job allo, plus Perf unit ☐ Auto KPI (Machine)

KPI: -

Physicals KPI Journal: 2: Allocation by GL Account Code

Workshop: -

Physicals Workshop Journal: 1: Standard

Resource Class Checks

☒ Disable Resource Checking

Journal Export: -

Export Name: Section 12

MONDAY 16 JUNE 2014 11:57 AM INFOLAB [@ GUMMY HOOPS INC - IESBUSINESS] PHYS SELECT PHYS JOURNAL OPTIONS

PHYSMPARAM-JNLS Log Off

Slide 14

Slide notes:

IES Web Client 8.6.3 © INFOLAB 1994-2014, All Rights Reserved.

Physical Journals: Selected Options

Please select the standard Journal Option for each type.

[Save](#)
[Quit](#)

Man: -

Physicals Man Journal: 3: Work Result, Premi, Overtime

Cost Type with Jobs: LAB Labor ☐ Auto KPI (Man)

Machine: -

Physicals Machine Journal: 3: GL / Job allo, plus Perf unit ☐ Auto KPI (Machine)

KPI: -

Physicals KPI Journal: 2: Allocation by GL Account Code

Workshop: -

Physicals Workshop Journal: 1: Standard
1: Standard

Resource Class Checks

☒ Disable Resource Checking

Journal Export: -

Export Name: Section 12

MONDAY 16 JUNE 2014 11:57 AM INFOLAB [@ GUMMY HOOPS INC - IESBUSINESS] PHYS SELECT PHYS JOURNAL OPTIONS

PHYSMPARAM-JNLS Log Off

Slide 15

Slide notes: For the Workshop Journal, there is only 1 option available.

IES Web Client 8.6.3 © INFOLAB 1994-2014, All Rights Reserved.

Physical Journals: Selected Options

Please select the standard Journal Option for each type.

[Save](#)
[Quit](#)

Man: -

Physicals Man Journal: 3: Work Result, Premi, Overtime

Cost Type with Jobs: LAB Labor ☐ Auto KPI (Man)

Machine: -

Physicals Machine Journal: 3: GL / Job allo, plus Perf unit ☐ Auto KPI (Machine)

KPI: -

Physicals KPI Journal: 2: Allocation by GL Account Code

Workshop: -

Physicals Workshop Journal: 1: Standard

Resource Class Checks

☒ Disable Resource Checking

Journal Export: -

Export Name: Section 12

MONDAY 16 JUNE 2014 11:57 AM INFOLAB [@ GUMMY HOOPS INC - IESBUSINESS] PHYS SELECT PHYS JOURNAL OPTIONS

PHYSMPARAM-JNLS Log Off

Slide 16

Slide notes:

IES Web Client 8.6.3 © INFOLAB 1994-2014, All Rights Reserved.

Physical Journals: Selected Options

Please select the standard Journal Option for each type.

[Save](#)
[Quit](#)

Man: -

Physicals Man Journal: 3: Work Result, Premi, Overtime

Cost Type with Jobs: LAB Labor ☐ Auto KPI (Man)

Machine: -

Physicals Machine Journal: 3: GL / Job allo, plus Perf unit ☐ Auto KPI (Machine)

KPI: -

Physicals KPI Journal: 2: Allocation by GL Account Code

Workshop: -

Physicals Workshop Journal: 1: Standard

Resource Class Checks

☐ Disable Resource Checking

Journal Export: -

Export Name: Section 12

MONDAY 16 JUNE 2014 11:57 AM INFOLAB [@ GUMMY HOOPS INC - IESBUSINESS] PHYS SELECT PHYS JOURNAL OPTIONS

PHYSMPARAM-JNLS Log Off

Slide 17

Slide notes: Resource checking can be disabled as a choice. The effect is that the system will post Physicals Journals to selected allocation, irrespective of whether the GL Allocation Account is associated with the correct Resource and KPI.

IES Web Client 8.6.3 © INFOLAB 1994-2014, All Rights Reserved.

Physical Journals: Selected Options

Please select the standard Journal Option for each type.

[Save](#)
[Quit](#)

Man: -

Physicals Man Journal: 3: Work Result, Premi, Overtime

Cost Type with Jobs: LAB Labor ☐ Auto KPI (Man)

Machine: -

Physicals Machine Journal: 3: GL / Job allo, plus Perf unit ☐ Auto KPI (Machine)

KPI: -

Physicals KPI Journal: 2: Allocation by GL Account Code

Workshop: -

Physicals Workshop Journal: 1: Standard

Resource Class Checks

☒ Disable Resource Checking

Journal Export: -

Export Name: Section 12

MONDAY 16 JUNE 2014 11:57 AM INFOLAB [@ GUMMY HOOPS INC - IESBUSINESS] PHYS SELECT PHYS JOURNAL OPTIONS

PHYSMPARAM-JNLS Log Off

Slide 18

Slide notes:

IES Web Client 8.6.3 © INFOLAB 1994-2014, All Rights Reserved.

Physical Journals: Selected Options

Please select the standard Journal Option for each type.

[Save](#)
[Quit](#)

Man: -

Physicals Man Journal: 3: Work Result, Premi, Overtime

Cost Type with Jobs: LAB Labor ☐ Auto KPI (Man)

Machine: -

Physicals Machine Journal: 3: GL / Job allo, plus Perf unit ☐ Auto KPI (Machine)

KPI: -

Physicals KPI Journal: 2: Allocation by GL Account Code

Workshop: -

Physicals Workshop Journal: 1: Standard

Resource Class Checks

☒ Disable Resource Checking

Journal Export: -

Export Name: Section 12

MONDAY 16 JUNE 2014 11:57 AM INFOLAB [@ GUMMY HOOPS INC - IESBUSINESS] PHYS SELECT PHYS JOURNAL OPTIONS

PHYSMPARAM-JNLS Log Off

Slide 19

Slide notes: The Export Name is used when we apply a configuration where Journals may be captured on an Estate Server, then later exported and imported at the Main Server.