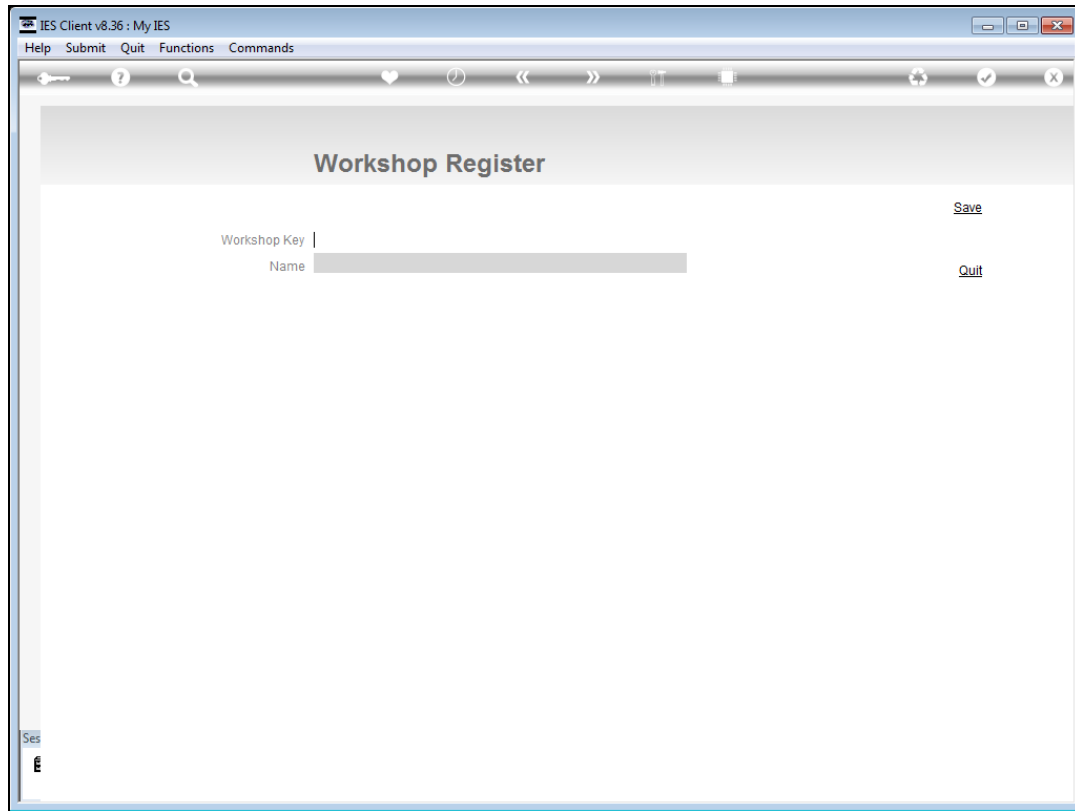


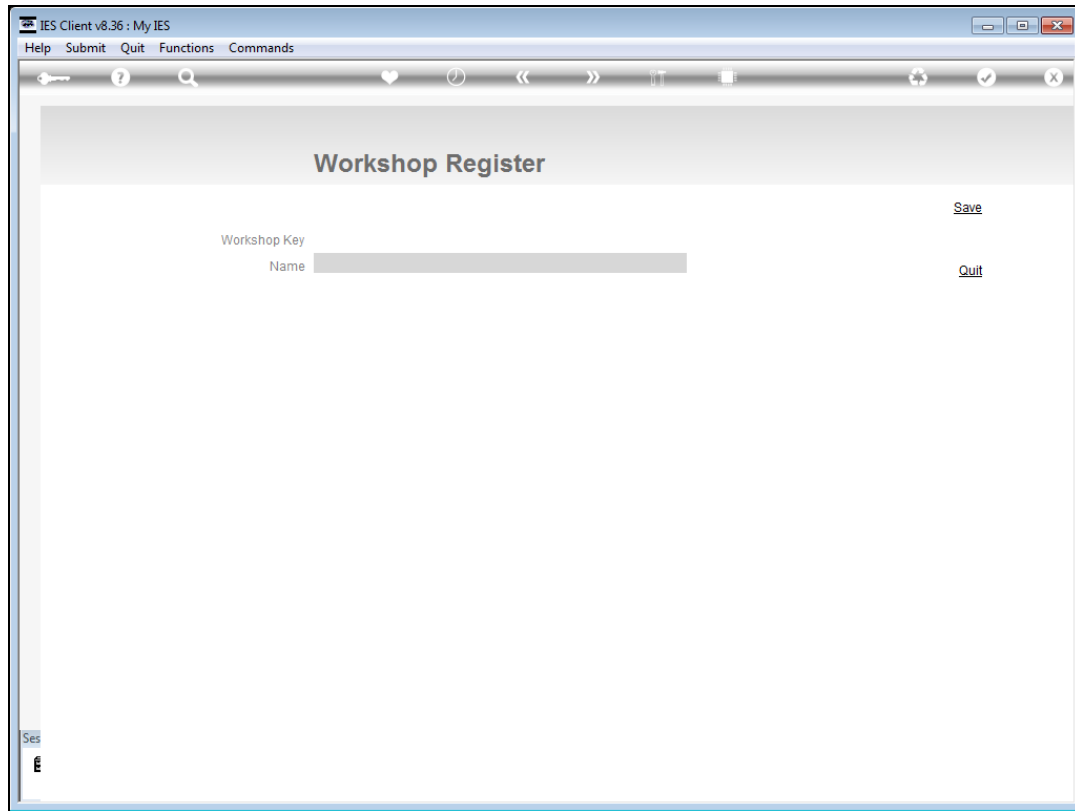
## Slide 1

Slide notes: The Workshop register is used to identify Workshops, so that we may process Workshop Journals for physicals and costs, and be able to automatically process Workshop Cost Recoveries.



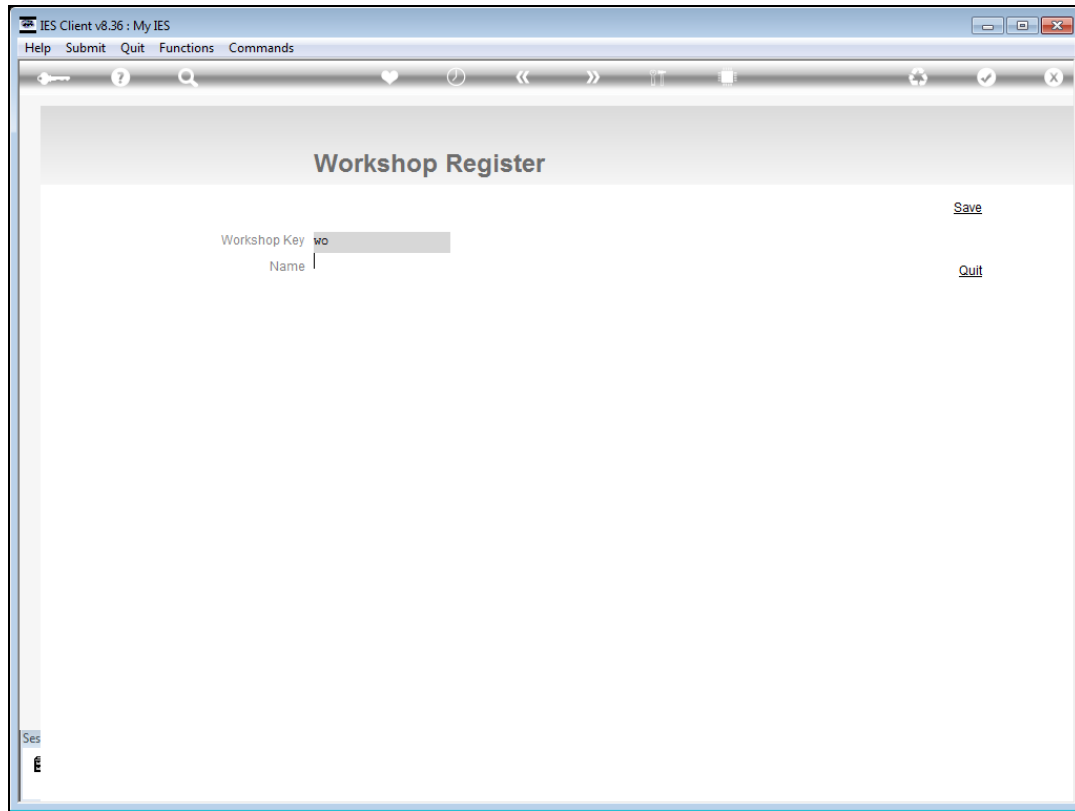
Slide 2

Slide notes:



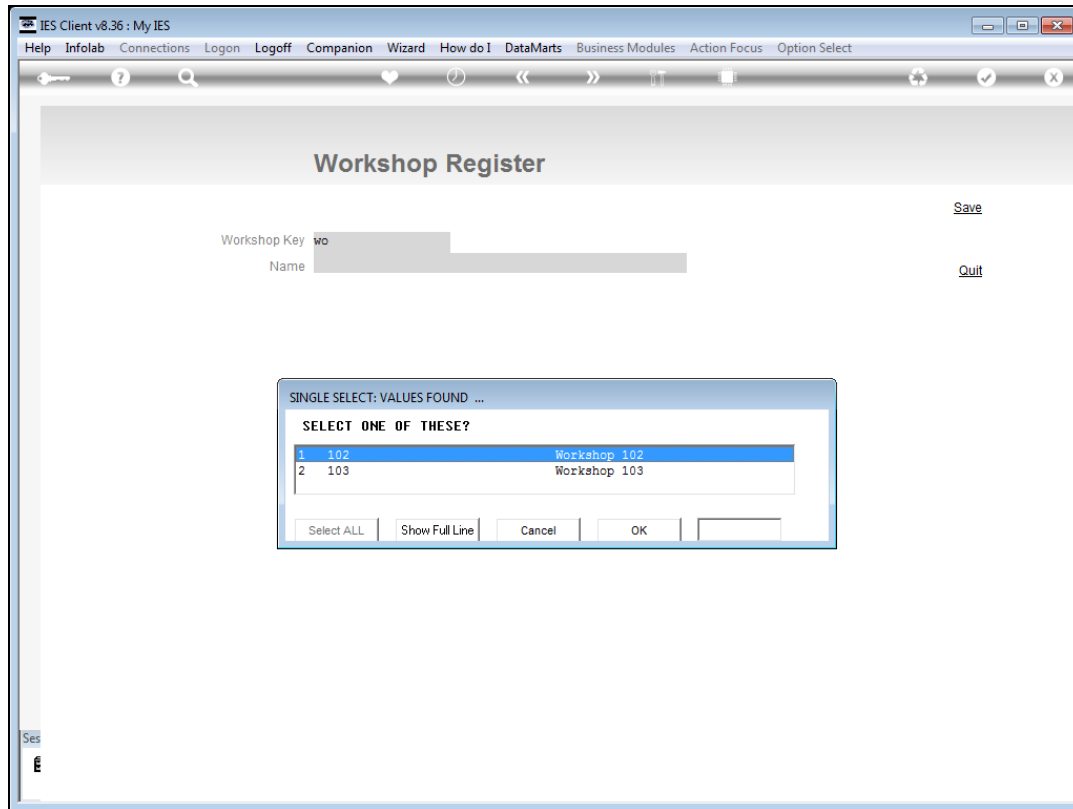
Slide 3

Slide notes:



Slide 4

Slide notes:



Slide 5

Slide notes:

The screenshot shows a web application window titled "IES Client v8.36: My IES". The menu bar includes: Help, Infolab, Connections, Logon, Logoff, Companion, Wizard, How do I, DataMarts, Business Modules, Action Focus, and Option Select. Below the menu is a toolbar with icons for search, home, back, forward, and other navigation functions. The main content area is titled "Workshop Register". It contains two input fields: "Workshop Key" and "Name", both of which are partially obscured by grey redaction boxes. To the right of these fields are two buttons: "Save" and "Quit".

Workshop Register

Workshop Key [redacted]

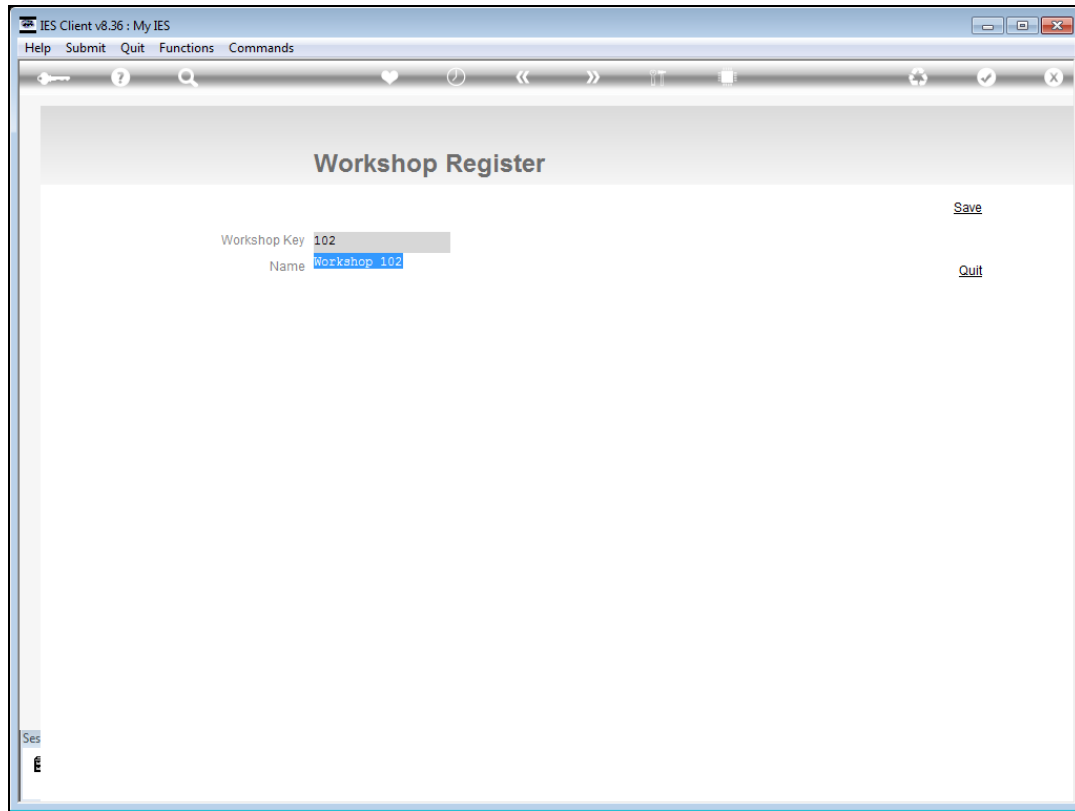
Name [redacted]

[Save](#)

[Quit](#)

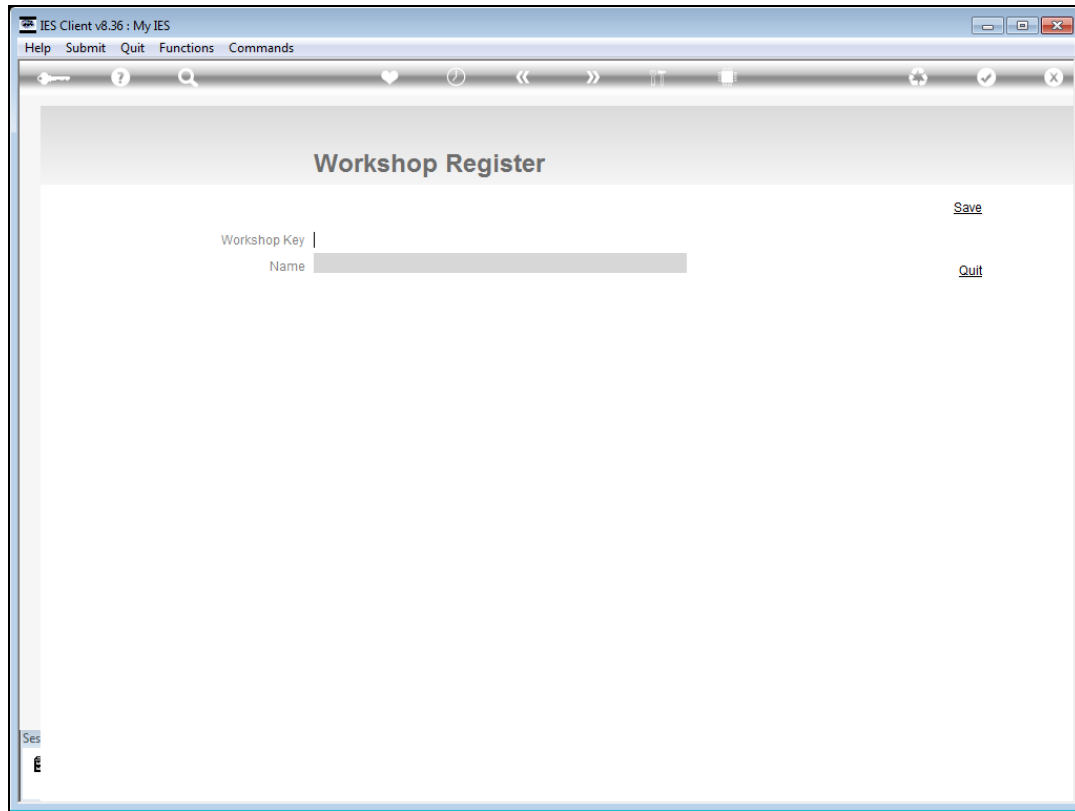
Slide 6

Slide notes:



Slide 7

Slide notes: A Workshop is defined by using a short key of our choice, and giving the Workshop a name for easy identification.



Slide 8

Slide notes: