

Slide 1

Slide notes: Machine Performance Units may be applied at Machine Physicals Journals. The concept is similar to the Work Result types on Man Journals. On the Machine Journal, there is always a unit, for example HOUR or KM, that is posted as a Resource quantity on the Machine Physicals Journal line, and there is an allocation. Optionally, a Machine Performance Unit can also be captured for the line.

IES Client v8.36 : My IES

Help Submit Quit Functions Commands

Machine Perf Unit Result type

Type Key | [Save](#)

Name [Perf Unit allo tool](#) [Quit](#)

Posting type

Activity	Cost Center (Manday Allo)	Cost Center (WR Posting)
1		

Ses

Slide 2

Slide notes:

IES Client v8.36 : My IES

Help Submit Quit Functions Commands

Machine Perf Unit Result type

Type Key

Name

Posting type

1: Not posted

Save

Perf Unit allo tool

Quit

Activity	Cost Center (Manday Allo)	Cost Center (WR Posting)
1		

Ses

Slide 3

Slide notes:

IES Client v8.36 : My IES

Help Submit Quit Functions Commands

Machine Perf Unit Result type

Type Key

ha

Save

Name

Perf Unit allo tool

Quit

Posting type

1: Not posted

Activity	Cost Center (Manday Allo)	Cost Center (WR Posting)
1		

Slide 4
Slide notes:

IES Client v8.36: My IES

Help Submit Quit Functions Commands

Machine Perf Unit Result type

Type Key Save

Name Perf Unit allo tool Quit

Posting type

Activity	Cost Center (Manday Allo)	Cost Center (WR Posting)
1		

Slide 5

Slide notes: A Machine Performance Unit is defined with a short key and a name. That is all that is required for use on the Machine Physicals Journal. In this example of unit Hectare, there is no additional posting of Resource or KPI, other than the Performance Unit total.

IES Client v8.36 : My IES

Help Submit Quit Functions Commands

Machine Perf Unit Result type

Type Key | [Save](#)

Name [Perf Unit allo tool](#) [Quit](#)

Posting type

Activity	Cost Center (Manday Allo)	Cost Center (WR Posting)
1		

Ses

Slide 6

Slide notes:

IES Client v8.36 : My IES

Help Submit Quit Functions Commands

Machine Perf Unit Result type

Type Key

Name

Posting type

[Save](#)

[Perf Unit allo tool](#)

[Quit](#)

	Activity	Cost Center (Manday Allo)	Cost Center (WR Posting)
1	91 Roads, Clearing & Fill	310 Machine Costs	310 Machine Costs
2	92 Roads, Finish grading	310 Machine Costs	310 Machine Costs
3	93 Roads, Surfacing	310 Machine Costs	310 Machine Costs

Slide 7

Slide notes:

Machine Perf Unit Result type

Type Key: m

Name: Meter

Posting type: 3: KPI

Buttons: Save, Perf Unit allo tool, Quit

	Enter (Manday Allo)	Cost Center (WR Posting)
1: Not posted		
2: Resource		
1	310 Machine Costs	310 Machine Costs
2	92 Roads, Finish grading	310 Machine Costs
3	93 Roads, Surfacing	310 Machine Costs

Slide 8

Slide notes: In this example of the METER performance unit, the setting is to post a KPI transaction for the Performance Unit total.

IES Client v8.36 : My IES

Help Submit Quit Functions Commands

Machine Perf Unit Result type

Type Key [Save](#)

Name [Perf Unit allo tool](#) [Quit](#)

Posting type

	Activity	Cost Center (Manday Allo)	Cost Center (WR Posting)
1	91 Roads, Clearing & Fill	310 Machine Costs	310 Machine Costs
2	92 Roads, Finish grading	310 Machine Costs	310 Machine Costs
3	93 Roads, Surfacing	310 Machine Costs	310 Machine Costs

Slide 9

Slide notes: So in this example, the meter is encountered with road building by Machine, and we see 3 Activities where this unit will be encountered. In each case, there is also the main allocation Cost Center where the standard Machine Unit will be posted as a Resource, plus the new Cost Center where the Performance Unit total will be posted, either as Resource or as KPI.

IES Client v8.36 : My IES

Help Submit Quit Functions Commands

Machine Perf Unit Result type

Type Key [Save](#)

Name [Perf Unit allo tool](#) [Quit](#)

Posting type

	Activity	Cost Center (Manday Allo)	Cost Center (WR Posting)
1	91 Roads, Clearing & Fill	310 Machine Costs	310 Machine Costs
2	92 Roads, Finish grading	310 Machine Costs	310 Machine Costs
3	93 Roads, Surfacing	310 Machine Costs	310 Machine Costs

[Ses](#)

[Nex](#) [Pre](#) [Add](#) [Ins](#) [Ed](#) [Del](#)

Slide 10

Slide notes: Since the posting is KPI rather than Resource in this case, it is allowed for the new Cost Center to be the same as where the main Resource is being posted.

IES Client v8.36 : My IES

Help Submit Quit Functions Commands

Machine Perf Unit Result type

Type Keym

NameMeter

Posting type3: KPI

Save

Perf Unit allo tool

Quit

	Activity	Cost Center (Manday Allo)	Cost Center (WR Posting)
1	91 Roads, Clearing & Pili	310 Machine Costs	310 Machine Costs
2	92 Roads, Finish grading	310 Machine Costs	310 Machine Costs
3	93 Roads, Surfacing	310 Machine Costs	310 Machine Costs

Ses

Nex

Pre

Add

Ins

Ed

Del

Slide 11

Slide notes:

Page 11 of 25

IES Client v8.36 : My IES

Help Submit Quit Functions Commands

Machine Perf Unit Result type

Type Key Save

Name Perf Unit allo tool Quit

Posting type

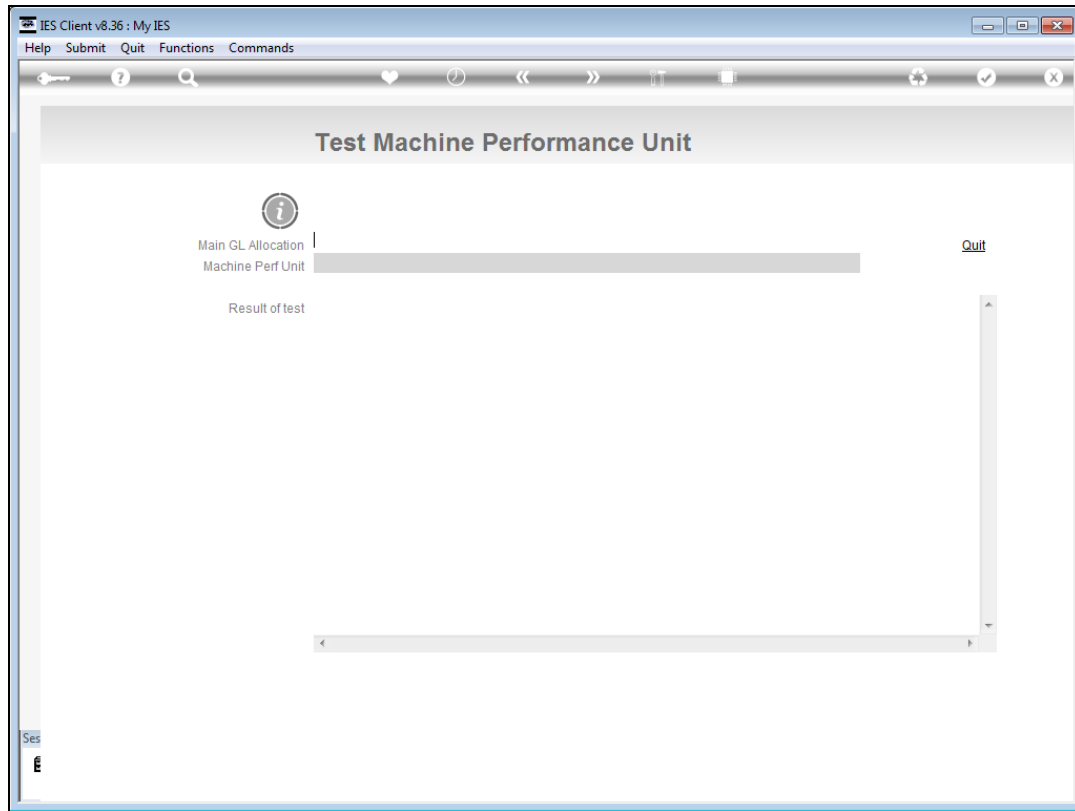
	Activity	Cost Center (Manday Allo)	Cost Center (WR Posting)
1	91 Roads, Clearing & Pili	310 Machine Costs	310 Machine Costs
2	92 Roads, Finish grading	310 Machine Costs	310 Machine Costs
3	93 Roads, Surfacing	310 Machine Costs	310 Machine Costs

Ses

Nex Pre Add Ins Ed Del

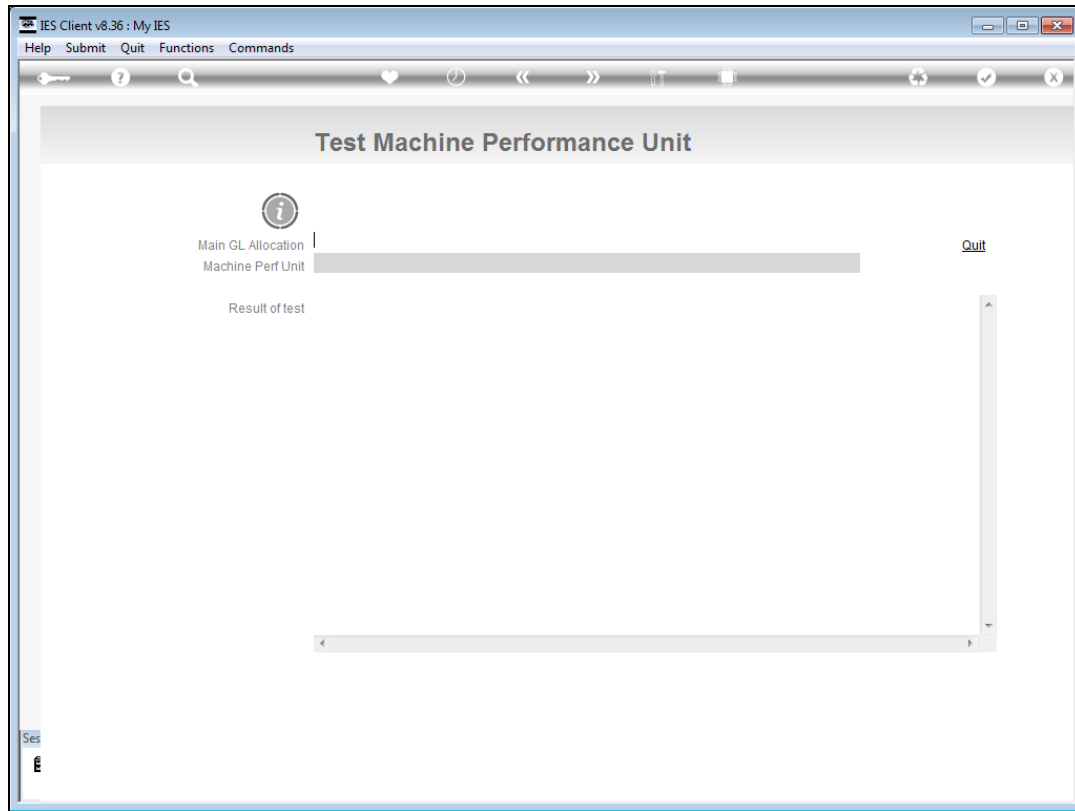
Slide 12

Slide notes: We have a tool to test our setup.



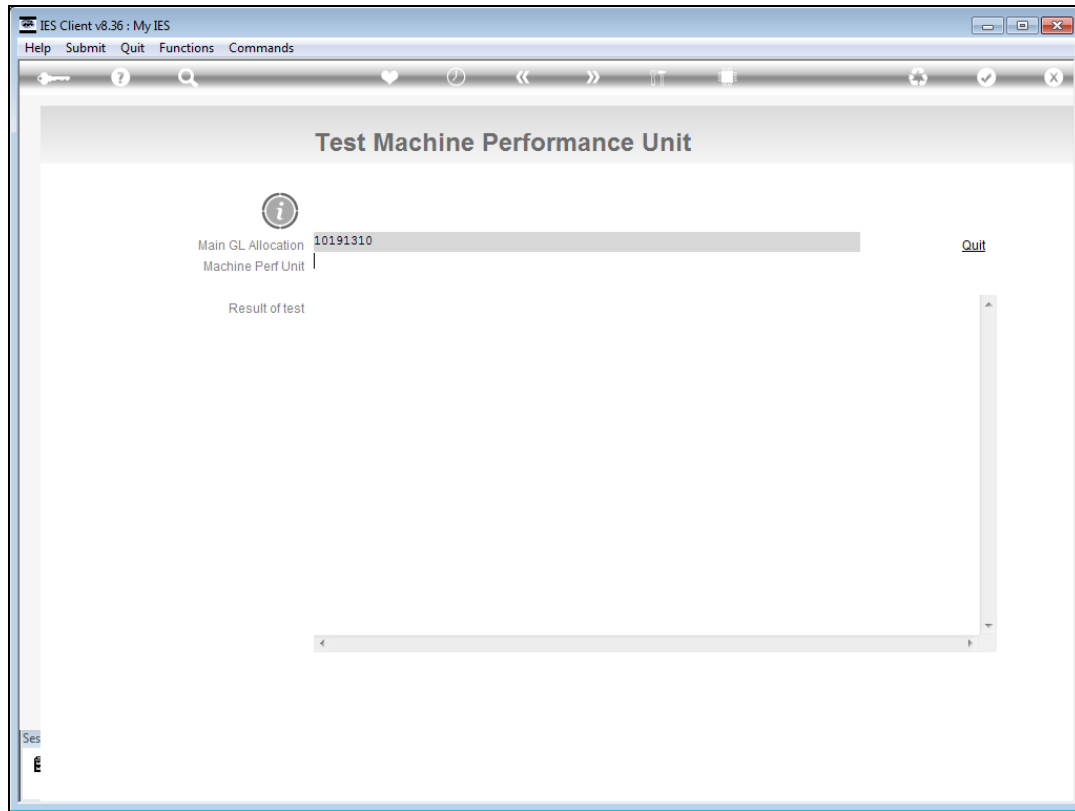
Slide 13

Slide notes:

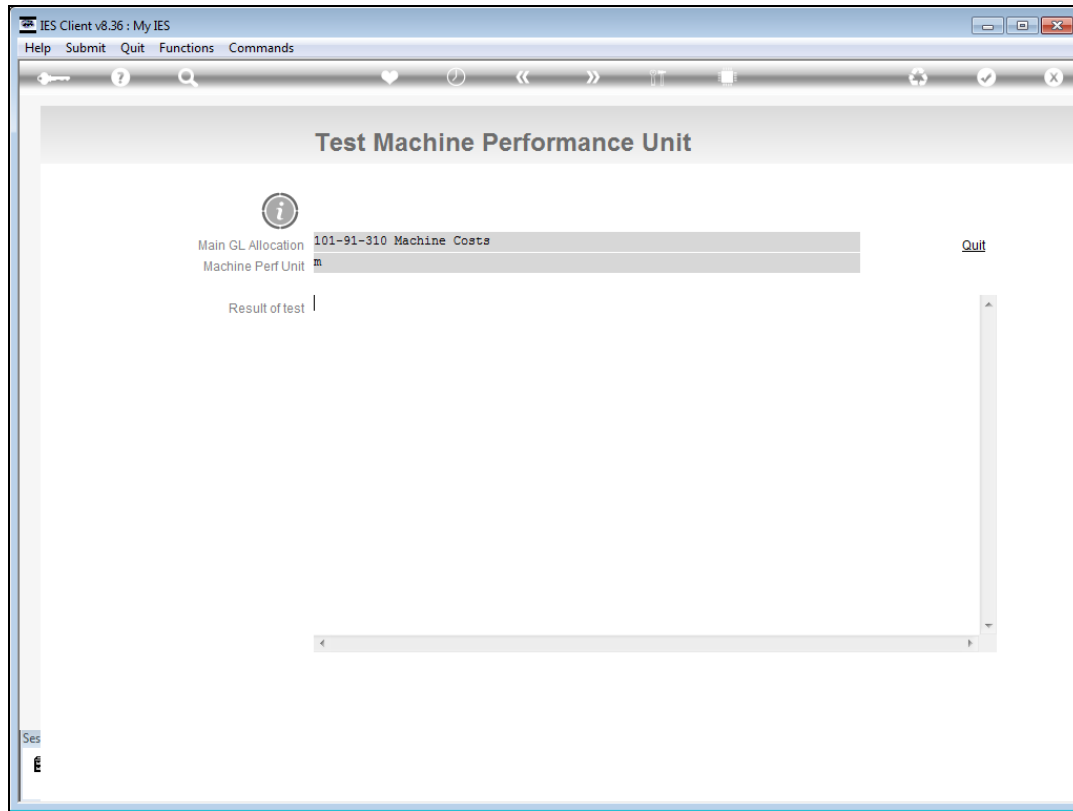


Slide 14

Slide notes:

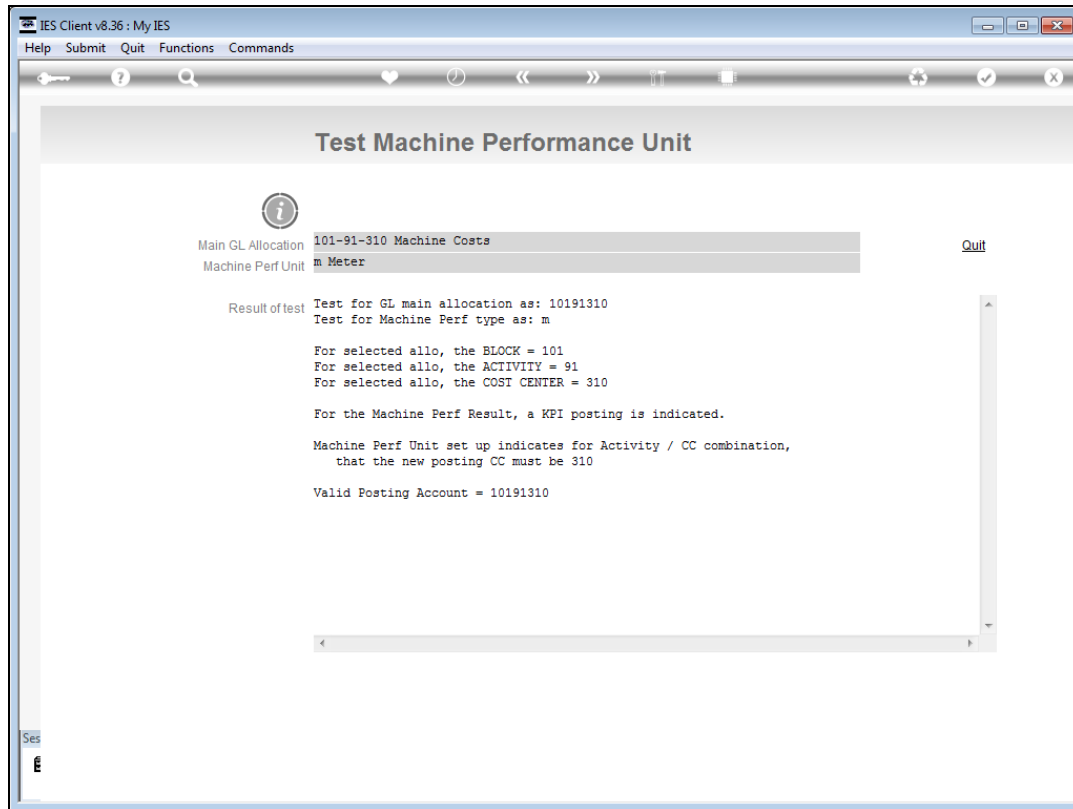


Slide 15
Slide notes:



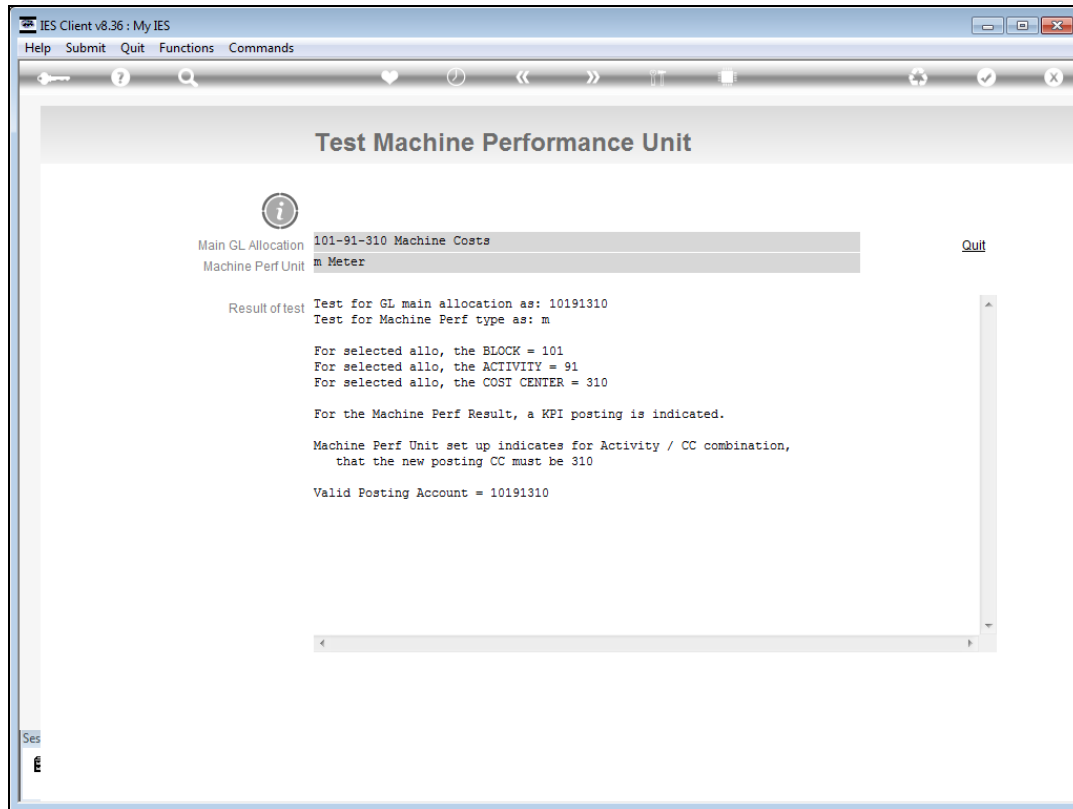
Slide 16

Slide notes:



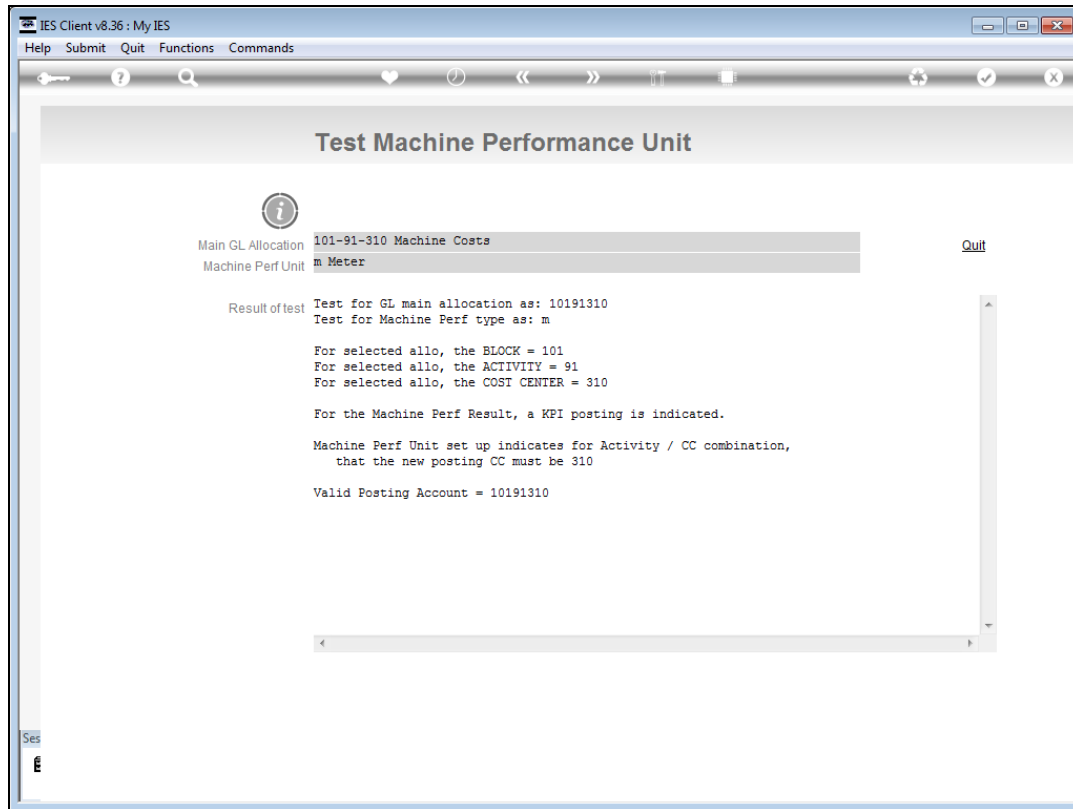
Slide 17

Slide notes: By choosing an Allocation Account and a Performance Unit, we can test whether the system is able to find the correct Account for Allocating the Performance Unit total.

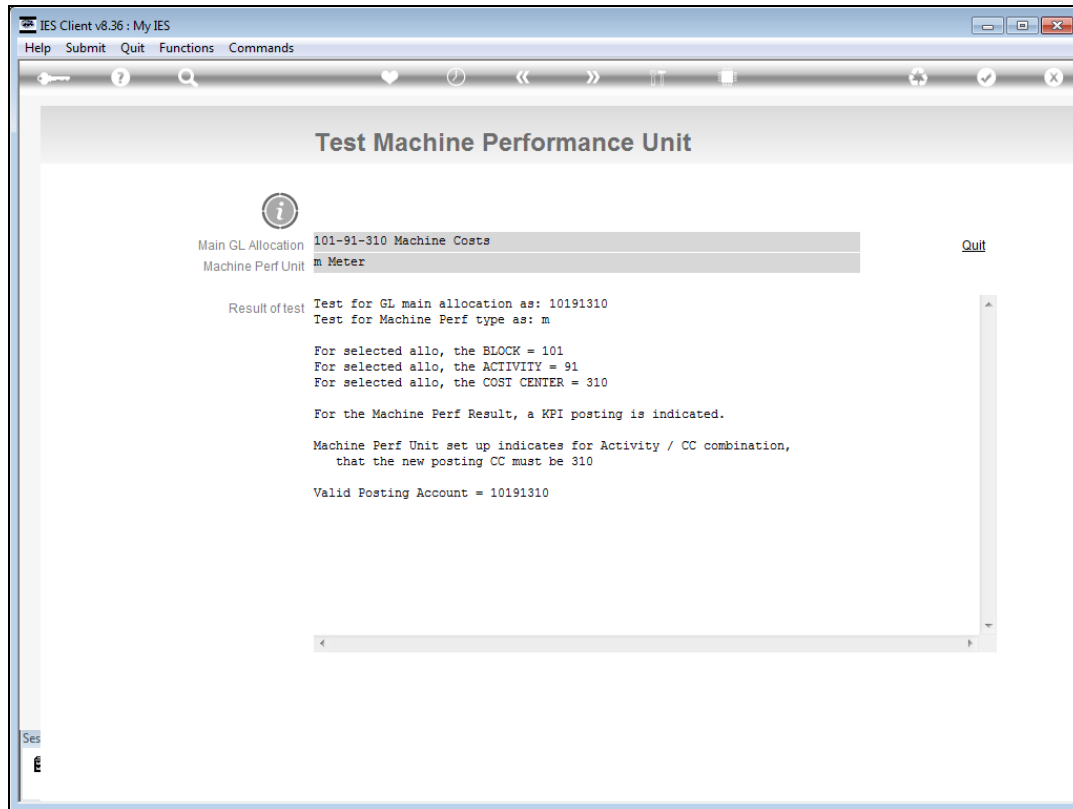


Slide 18

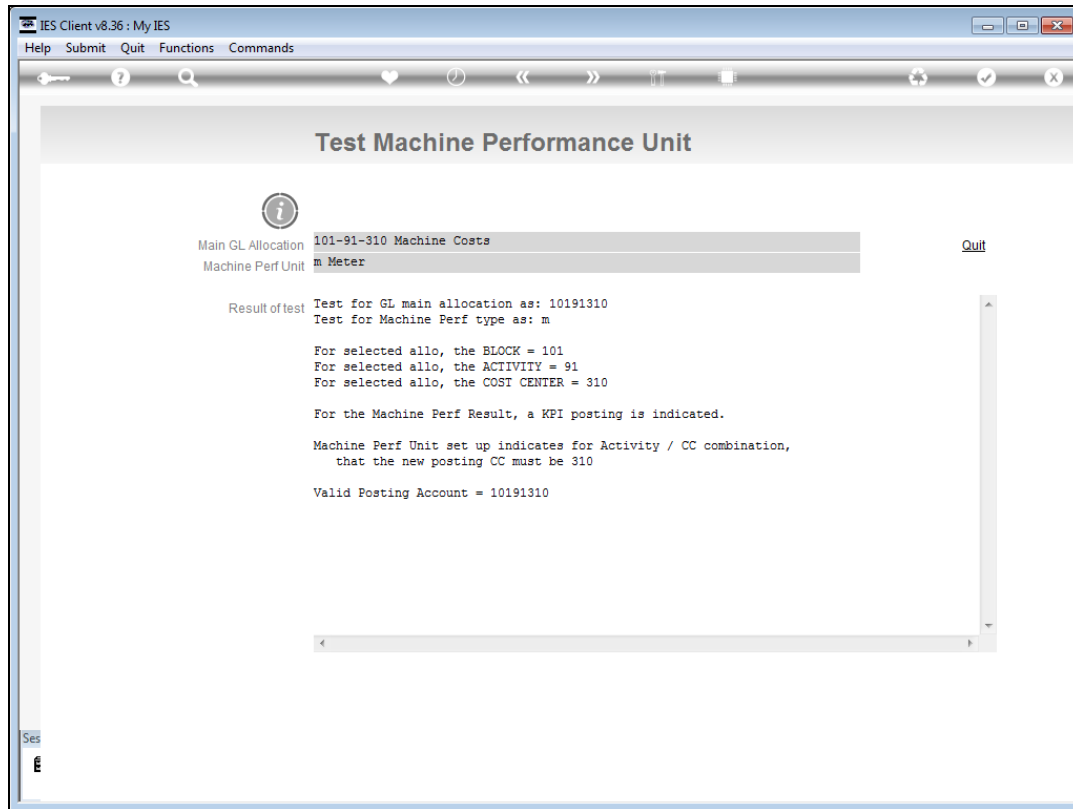
Slide notes:



Slide 19
Slide notes:



Slide 20
Slide notes:



Slide 21

Slide notes:

IES Client v8.36 : My IES

Help Submit Quit Functions Commands

Machine Perf Unit Result type

Type Key Save

Name Perf Unit allo tool Quit

Posting type

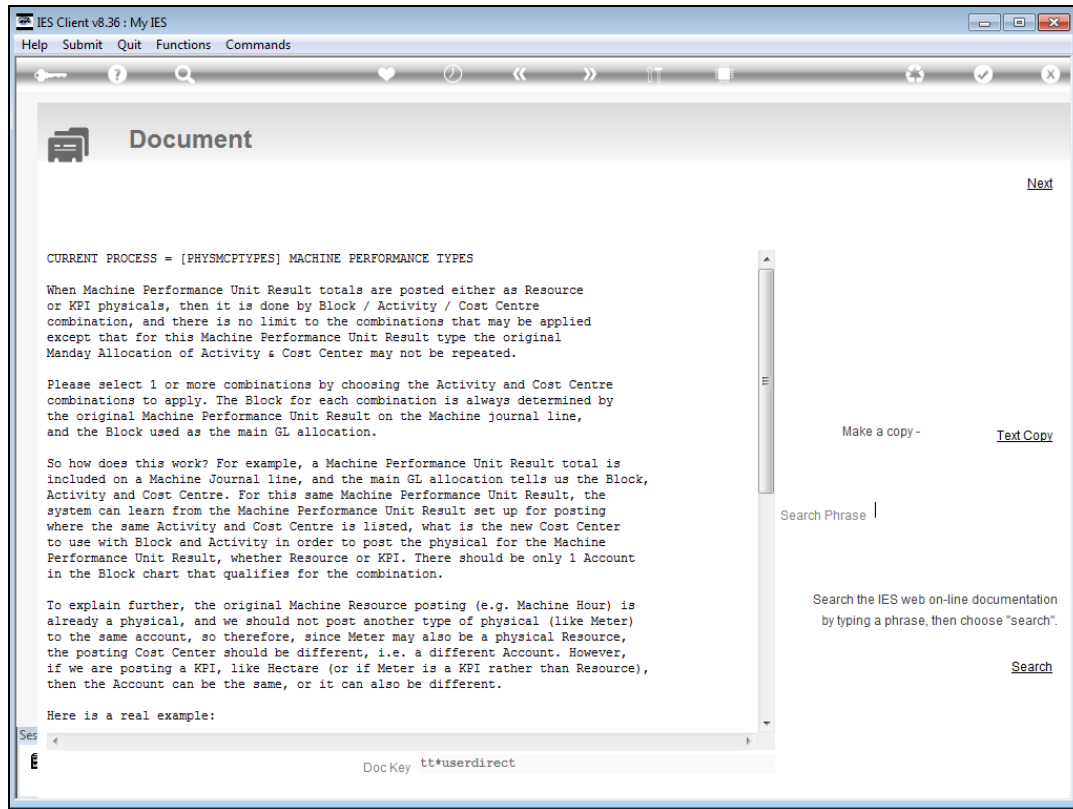
	Activity	Cost Center (Manday Allo)	Cost Center (WR Posting)
1	91 Roads, Clearing & Fill	310 Machine Costs	310 Machine Costs
2	92 Roads, Finish grading	310 Machine Costs	310 Machine Costs
3	93 Roads, Surfacing	310 Machine Costs	310 Machine Costs

Ses

Nex Pre Add Ins Ed Del

Slide 22

Slide notes:



Slide 23

Slide notes: It is still worthwhile for the Implementor to study the Help on this set up, for a good understanding.

IES Client v8.36 : My IES

Help Submit Quit Functions Commands

Machine Perf Unit Result type

Type Keym

NameMeter

Posting type3: KPI

Save

Perf Unit allo tool

Quit

	Activity	Cost Center (Manday Allo)	Cost Center (WR Posting)
1	91 Roads, Clearing & Pili	310 Machine Costs	310 Machine Costs
2	92 Roads, Finish grading	310 Machine Costs	310 Machine Costs
3	93 Roads, Surfacing	310 Machine Costs	310 Machine Costs

Ses

NexPreAddInsEdDel

Slide 24

Slide notes:

IES Client v8.36 : My IES

Help Submit Quit Functions Commands

Machine Perf Unit Result type

Type Key |

Name

Posting type

1: Not posted

Save

Perf Unit allo tool

Quit

Activity	Cost Center (Manday Allo)	Cost Center (WR Posting)
1		

Ses

Slide 25

Slide notes: