

Slide 1

Slide notes: The Workshop Journal option that will be offered is derived from the set up.

IES Client v8.36 : My IES

Help Submit Quit Functions Commands

1 Main 2 Source

Physical Multi Journal - Workshop

[Retrieve](#) [Post Now](#)
[Validate](#) [Post Later](#)
[Print](#) [Quit](#)

Journal Key 1697646144

Batch

Workshop

Period 165: Jun 2014

Activity Date

Cost Analysis 006: Workshop Costs

Income Analysis 007: Workshop Income

Resource	Quantity	Job	Cost Type	GL Account
1				

Ses

Slide 2

Slide notes:

IES Client v8.36 : My IES

Help Submit Quit Functions Commands

1 Main 2 Source

Physical Multi Journal - Workshop

[Retrieve](#) [Post Now](#)
[Validate](#) [Post Later](#)
[Print](#) [Quit](#)

Journal Key

Batch

Workshop

Period

Activity Date

Cost Analysis 006: Workshop Costs

Income Analysis 007: Workshop Income

Resource	Quantity	Job	Cost Type	GL Account
1				

Ses

Slide 3

Slide notes:

IES Client v8.36 : My IES

Help Submit Quit Functions Commands

1 Main 2 Source

Physical Multi Journal - Workshop

[Retrieve](#) [Post Now](#)
[Validate](#) [Post Later](#)
[Print](#) [Quit](#)

Journal Key 1697646144

Batch

Workshop

Period 165: Jun 2014

Activity Date

Cost Analysis 006: Workshop Costs

Income Analysis 007: Workshop Income

Resource	Quantity	Job	Cost Type	GL Account
1				

Ses

Slide 4

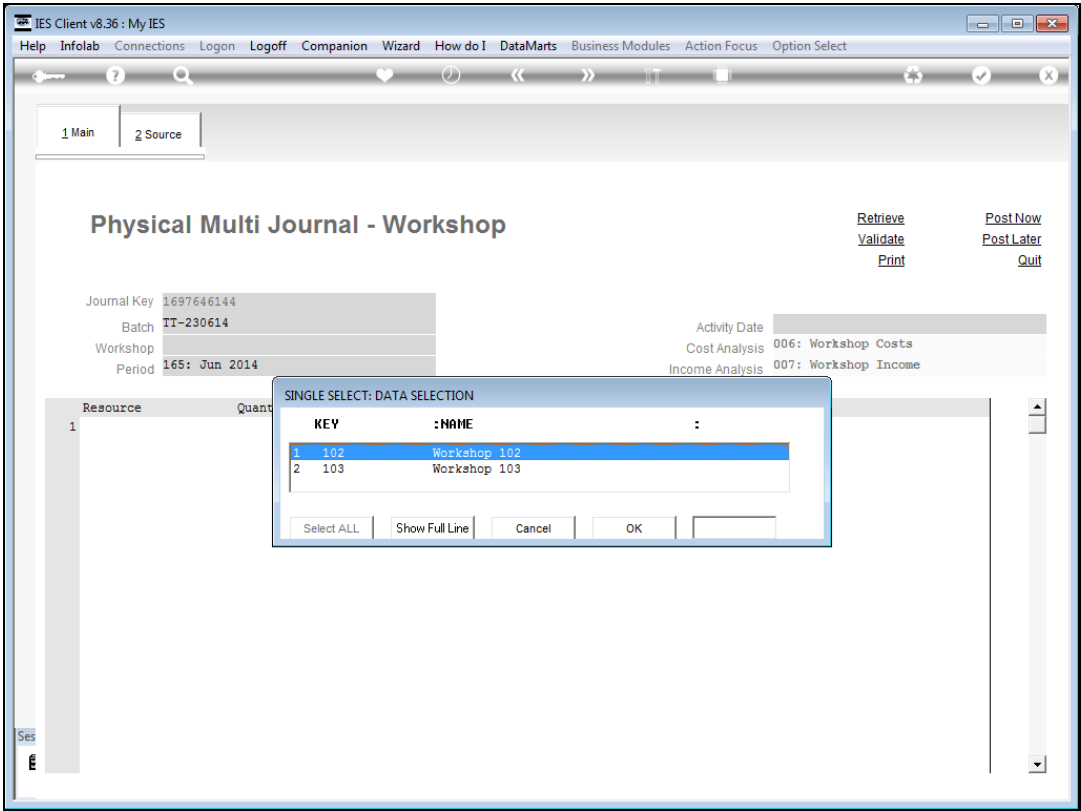
Slide notes:

The screenshot shows the 'Physical Multi Journal - Workshop' interface in the IES Client v8.36. The window has a menu bar with 'Help', 'Submit', 'Quit', 'Functions', and 'Commands'. Below the menu is a toolbar with icons for search, home, back, forward, and other navigation functions. The main area is divided into two tabs: '1 Main' and '2 Source'. The '1 Main' tab is active, displaying the title 'Physical Multi Journal - Workshop'. On the right side of the main area, there are links for 'Retrieve', 'Validate', 'Print', 'Post Now', 'Post Later', and 'Quit'. Below the title, there are input fields for 'Journal Key' (1697646144), 'Batch' (TT-230614), 'Workshop' (165: Jun 2014), 'Activity Date', 'Cost Analysis' (006: Workshop Costs), and 'Income Analysis' (007: Workshop Income). At the bottom, there is a table with columns: 'Resource', 'Quantity', 'Job', 'Cost Type', and 'GL Account'. The table has one row with the value '1' in the 'Resource' column. The 'Ses' button is visible in the bottom left corner.

Resource	Quantity	Job	Cost Type	GL Account
1				

Slide 5

Slide notes: For a Workshop Multi Physicals Journal, we must select which Workshop we are processing for, and all lines on the Journal will be charged to the selected Workshop.



Slide 6
Slide notes:

IES Client v8.36 : My IES

Help Submit Quit Functions Commands

1 Main 2 Source

Physical Multi Journal - Workshop

[Retrieve](#) [Post Now](#)
[Validate](#) [Post Later](#)
[Print](#) [Quit](#)

Journal Key 1697646144
Batch TT-230614
Workshop 102
Period 165: Jun 2014

Activity Date
Cost Analysis 006: Workshop Costs
Income Analysis 007: Workshop Income

Resource	Quantity	Job	Cost Type	GL Account
1				

Ses

Slide 7

Slide notes:

The screenshot shows the 'Physical Multi Journal - Workshop' form in the IES Client v8.36. The form has a menu bar (Help, Submit, Quit, Functions, Commands) and a toolbar with icons for search, home, back, forward, print, and other functions. The form is divided into two tabs: '1 Main' and '2 Source'. The '1 Main' tab is active. The form contains several input fields and buttons. The 'Journal Key' is 1697646144. The 'Batch' is IT-230614. The 'Workshop' is 102 Workshop 102. The 'Period' is 165: Jun 2014. The 'Activity Date' is blank. The 'Cost Analysis' is 006: Workshop Costs. The 'Income Analysis' is 007: Workshop Income. There are buttons for Retrieve, Validate, Print, Post Now, Post Later, and Quit. Below the input fields is a table with columns: Resource, Quantity, Job, Cost Type, and GL Account. The table has one row with the value 1 in the Resource column. The table is empty except for the header and the first row.

Resource	Quantity	Job	Cost Type	GL Account
1				

Slide 8

Slide notes: As always, we select the Period and Activity Date, and Cost Analysis and Income Analysis will not be captured but are automatically derived from the set up.

IES Client v8.36 : My IES

Help Submit Quit Functions Commands

1 Main2 Source

Physical Multi Journal - Workshop

RetrievePost Now

ValidatePost Later

PrintQuit

Journal Key1697646144

BatchTT-230614

Workshop102 Workshop 102

Period165: Jun 2014

Activity Date2306

Cost Analysis006: Workshop Costs

Income Analysis007: Workshop Income

Resource	Quantity	Job	Cost Type	GL Account
1				

Ses

NexPreAddInsEdDel

Slide 9

Slide notes:

IES Client v8.36: My IES

Help Lookup Back 1 Field Restart Line Edit Mini Menu Submit Field Quit Edit

1 Main 2 Source

Physical Multi Journal - Workshop

[Retrieve](#) [Post Now](#)
[Validate](#) [Post Later](#)
[Print](#) [Quit](#)

Journal Key 1697646144
Batch TT-230614
Workshop 102 Workshop 102
Period 165: Jun 2014

Activity Date 23/06/2014
Cost Analysis 006: Workshop Costs
Income Analysis 007: Workshop Income

Resource	Quantity	Job	Cost Type	GL Account
1	1			

Ses

Nex Pre Add Ins Ed Del

Slide 10

Slide notes: For as many lines as required, we will charge by Resource applied, and the Resource may be a mix of Man and Machine type of Resources for multiple lines.

IES Client v8.36: My IES

Help Lookup Back 1 Field Restart Line Edit Mini Menu Submit Field Quit Edit

1 Main 2 Source

Physical Multi Journal - Workshop

[Retrieve](#) [Post Now](#)
[Validate](#) [Post Later](#)
[Print](#) [Quit](#)

Journal Key 1697646144
Batch TT-230614
Workshop 102 Workshop 102
Period 165: Jun 2014

Activity Date 23/06/2014
Cost Analysis 006: Workshop Costs
Income Analysis 007: Workshop Income

Resource	Quantity	Job	Cost Type	GL Account
1 md1 MANDAY STD				

Ses

Nex Pre Add Ins Ed Del

Slide 11

Slide notes: We process a Resource Unit quantity.

IES Client v8.36: My IES

Help Lookup Back 1 Field Restart Line Edit Mini Menu Submit Field Quit Edit

1 Main 2 Source

Physical Multi Journal - Workshop

[Retrieve](#) [Post Now](#)
[Validate](#) [Post Later](#)
[Print](#) [Quit](#)

Journal Key 1697646144
Batch TT-230614
Workshop 102 Workshop 102
Period 165: Jun 2014

Activity Date 23/06/2014
Cost Analysis 006: Workshop Costs
Income Analysis 007: Workshop Income

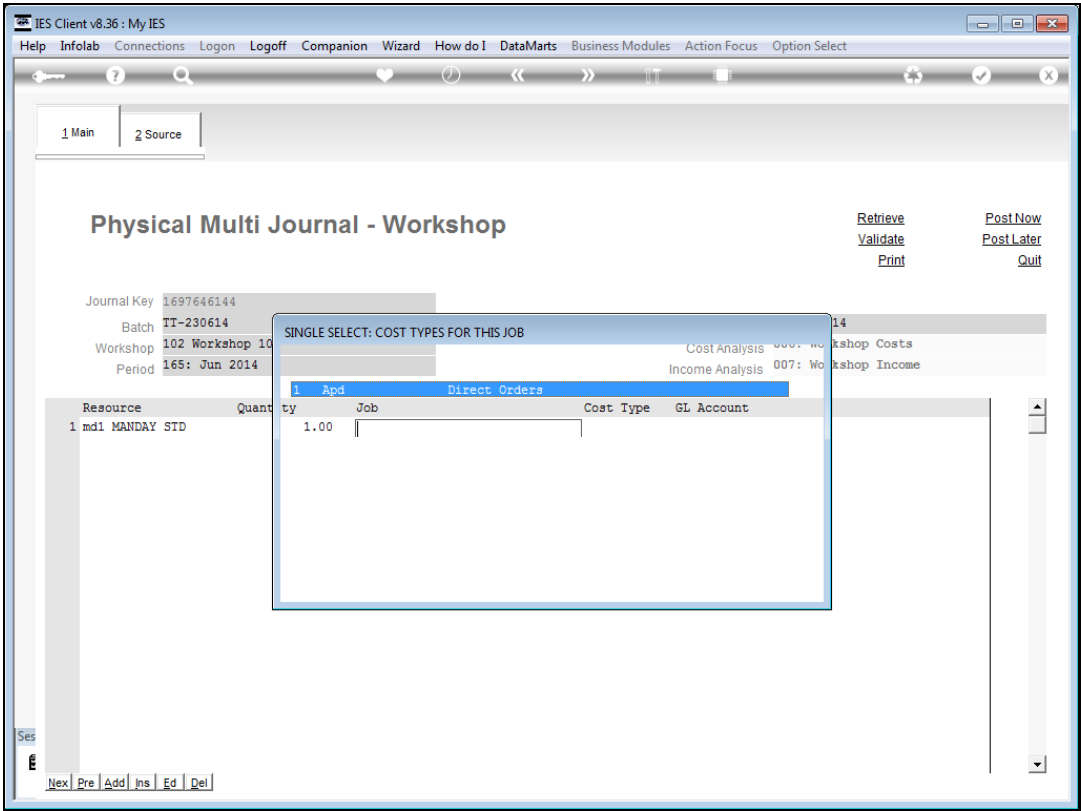
Resource	Quantity	Job	Cost Type	GL Account
1 md1 MANDAY STD	1.00			

Ses

Nex Pre Add Ins Ed Del

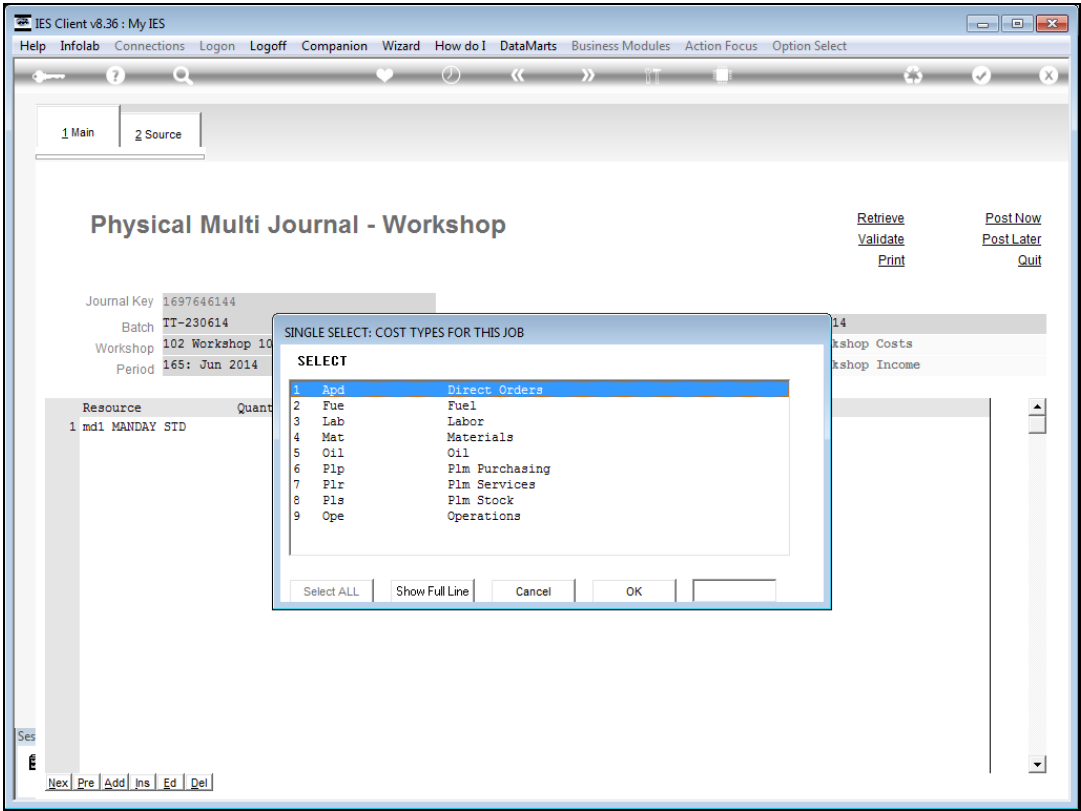
Slide 12

Slide notes: Allocation of the resource charge may be to Jobs & GL or only to GL, but should be to the Workshop Accounts set.



Slide 13

Slide notes:



Slide 14

Slide notes:

IES Client v8.36 : My IES

Help Infolab Connections Logon Logoff Companion Wizard How do I DataMarts Business Modules Action Focus Option Select

1 Main 2 Source

Physical Multi Journal - Workshop

[Retrieve](#) [Post Now](#)
[Validate](#) [Post Later](#)
[Print](#) [Quit](#)

Journal Key 1697646144
Batch TT-230614
Workshop 102 Workshop 102
Period 165: Jun 2014

Activity Date 23/06/2014
Cost Analysis 006: Workshop Costs
Income Analysis 007: Workshop Income

Resource	Quantity	Job	Cost Type	GL Account
1 md1 MANDAY STD	1.00			

Ses

Nex Pre Add Ins Ed Del

Slide 15

Slide notes:

IES Client v8.36 : My IES

Help Lookup Back 1 Field Restart Line Edit Mini Menu Submit Field Quit Edit

1 Main 2 Source

Physical Multi Journal - Workshop

[Retrieve](#) [Post Now](#)
[Validate](#) [Post Later](#)
[Print](#) [Quit](#)

Journal Key 1697646144
Batch TT-230614
Workshop 102 Workshop 102
Period 165: Jun 2014

Activity Date 23/06/2014
Cost Analysis 006: Workshop Costs
Income Analysis 007: Workshop Income

Resource	Quantity	Job	Cost Type	GL Account
1 md1 MANDAY STD	1.00	veh1357 KILUX 2000, K11988	ope	10191310

Ses

Nex Pre Add Ins Ed Del

Slide 16

Slide notes:

IES Client v8.36 : My IES

Help Lookup Back 1 Field Restart Line Edit Mini Menu Submit Field Quit Edit

1 Main 2 Source

Physical Multi Journal - Workshop

Journal Key1697646144
BatchTT-230614
Workshop102 Workshop 102
Period165: Jun 2014

Activity Date23/06/2014
Cost Analysis006: Workshop Costs
Income Analysis007: Workshop Income

Retrieve
Validate
Print

Post Now
Post Later
Quit

Resource	Quantity	Job	Cost Type	GL Account
1 md1 MANDAY STD	1.00	veh1357 KILUX 2000, K1198	ope	101-91-310 Machine Costs
2 md1				

Ses

NexPreAddInsEdDel

Slide 17

Slide notes:

IES Client v8.36 : My IES

Help Lookup Back 1 Field Restart Line Edit Mini Menu Submit Field Quit Edit

1 Main 2 Source

Physical Multi Journal - Workshop

[Retrieve](#) [Post Now](#)
[Validate](#) [Post Later](#)
[Print](#) [Quit](#)

Journal Key 1697646144
Batch TT-230614
Workshop 102 Workshop 102
Period 165: Jun 2014

Activity Date 23/06/2014
Cost Analysis 006: Workshop Costs
Income Analysis 007: Workshop Income

Resource	Quantity	Job	Cost Type	GL Account
1 md1 MANDAY STD	1.00	veh1357 KILUX 2000, K1198	ope	101-91-310 Machine Costs
2 md1				

Ses

Nex Pre Add Ins Ed Del

Slide 18

Slide notes: We have the usual Post Later, Validate and Print options.

IES Client v8.36 : My IES

Help Submit Quit Functions Commands

1 Main 2 Source

Physical Multi Journal - Workshop

Journal Key 1697646185

Batch

Workshop

Period 165: Jun 2014

Activity Date

Cost Analysis 006: Workshop Costs

Income Analysis 007: Workshop Income

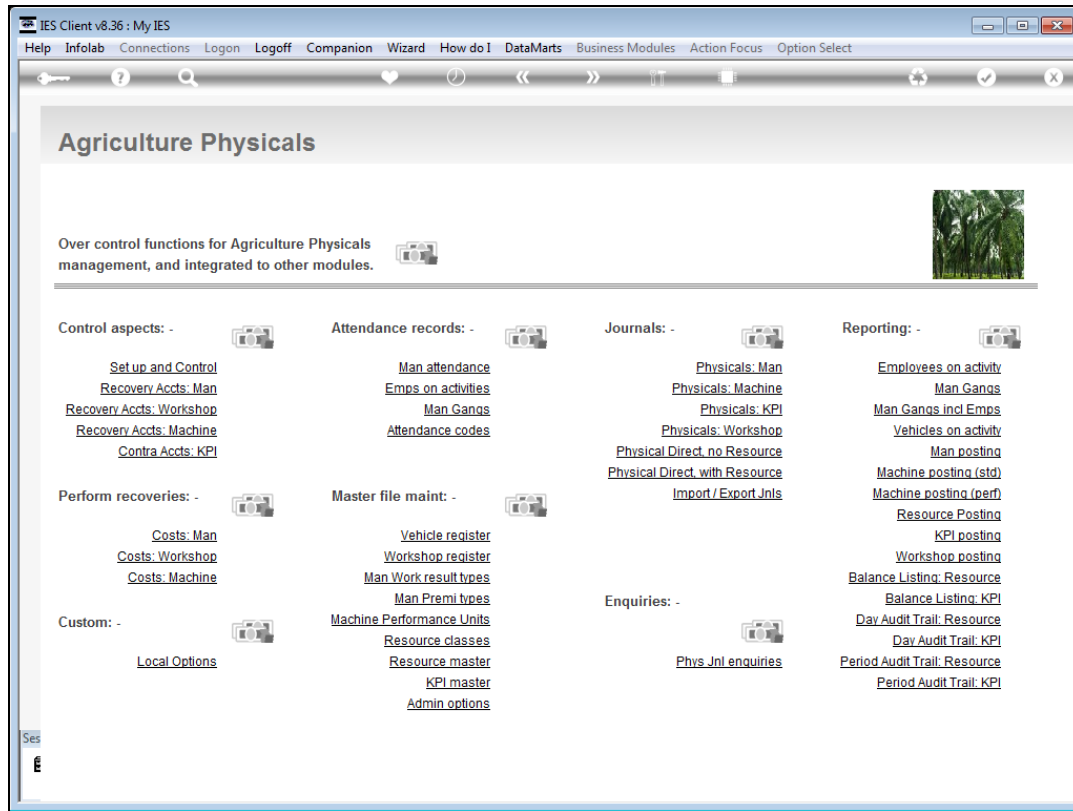
Retrieve Post Now
Validate Post Later
Print Quit

Resource	Quantity	Job	Cost Type	GL Account
1				

Ses

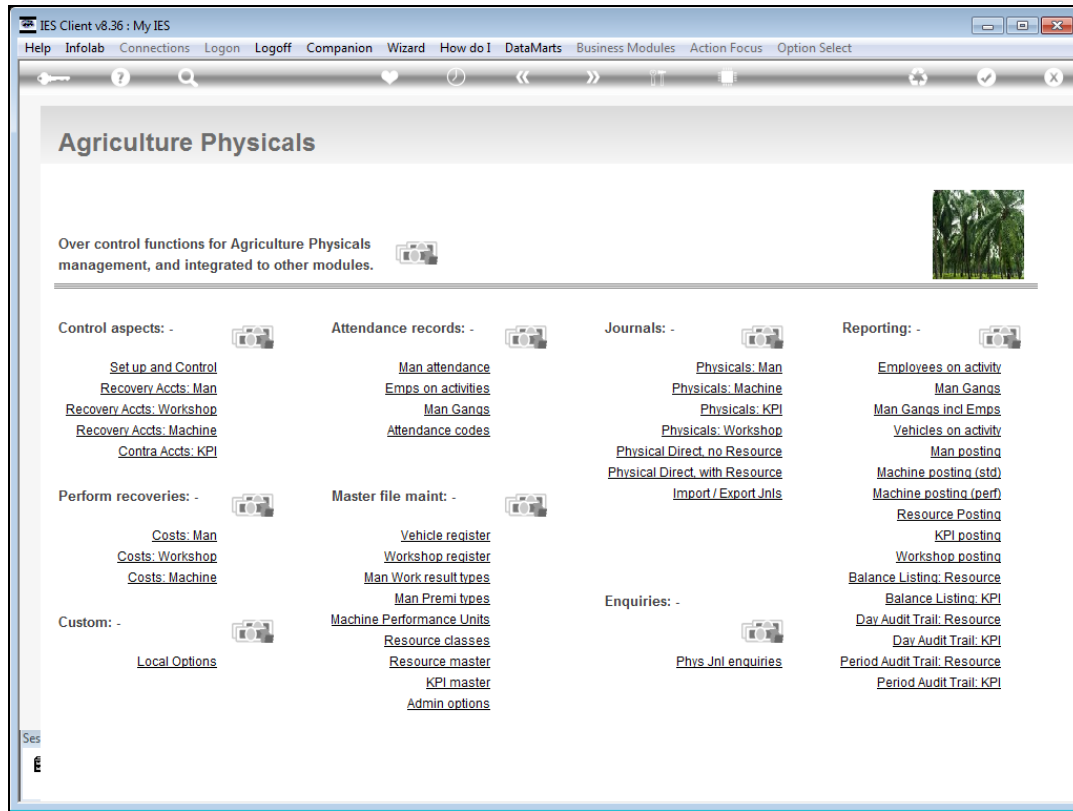
Slide 19

Slide notes:



Slide 20

Slide notes:



Slide 21

Slide notes: