

Slide 1 - Slide 1



Slide notes

The User's access to Data Queries, also referred to as Query Builder and Query Writer, is determined by the User Profile for Data Queries in the Current Datamart.

Slide 2 - Slide 2



Slide notes

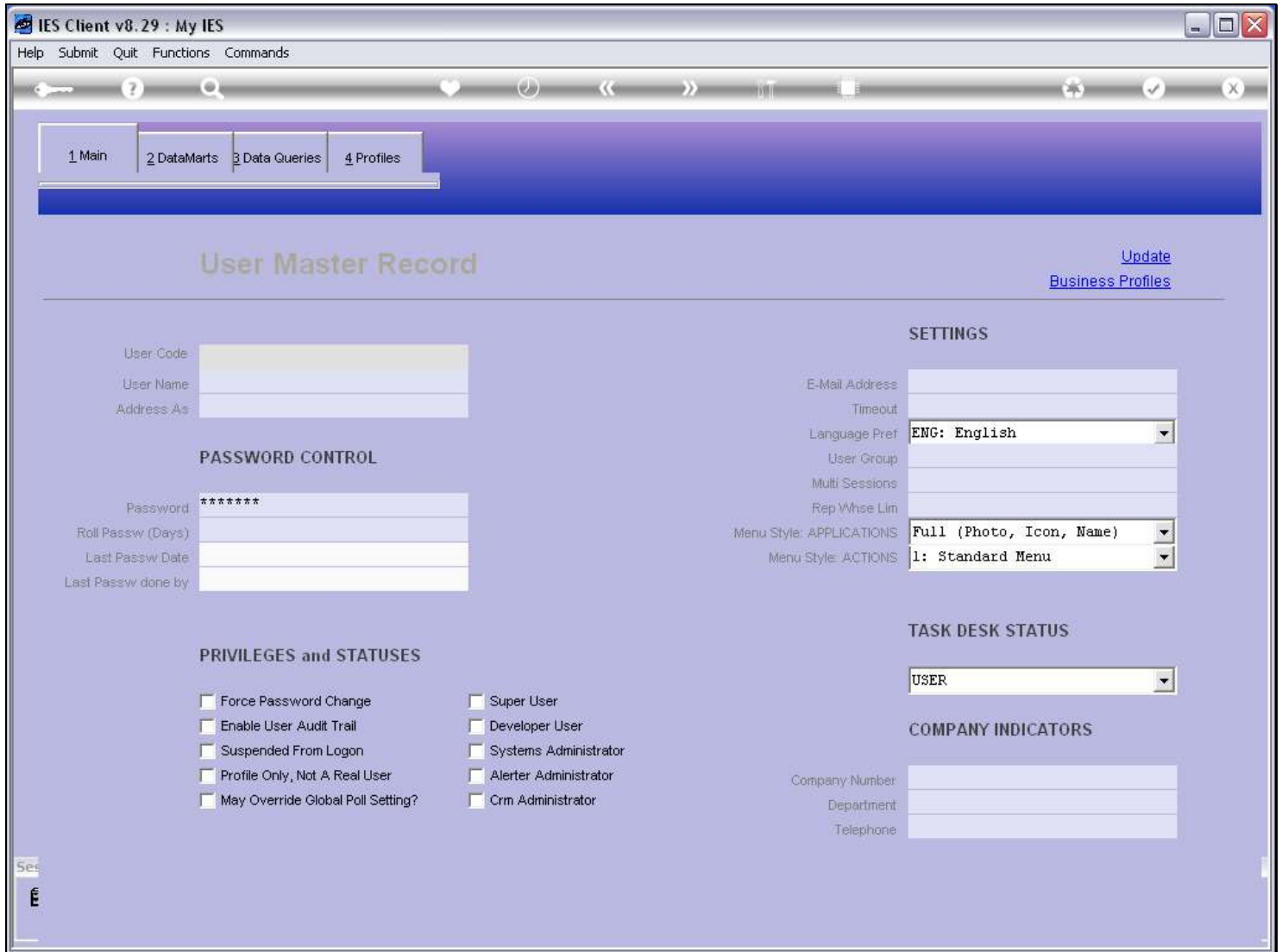
We manage this from the 'Maintain User' option in the Profile Management module.

Slide 3 - Slide 3



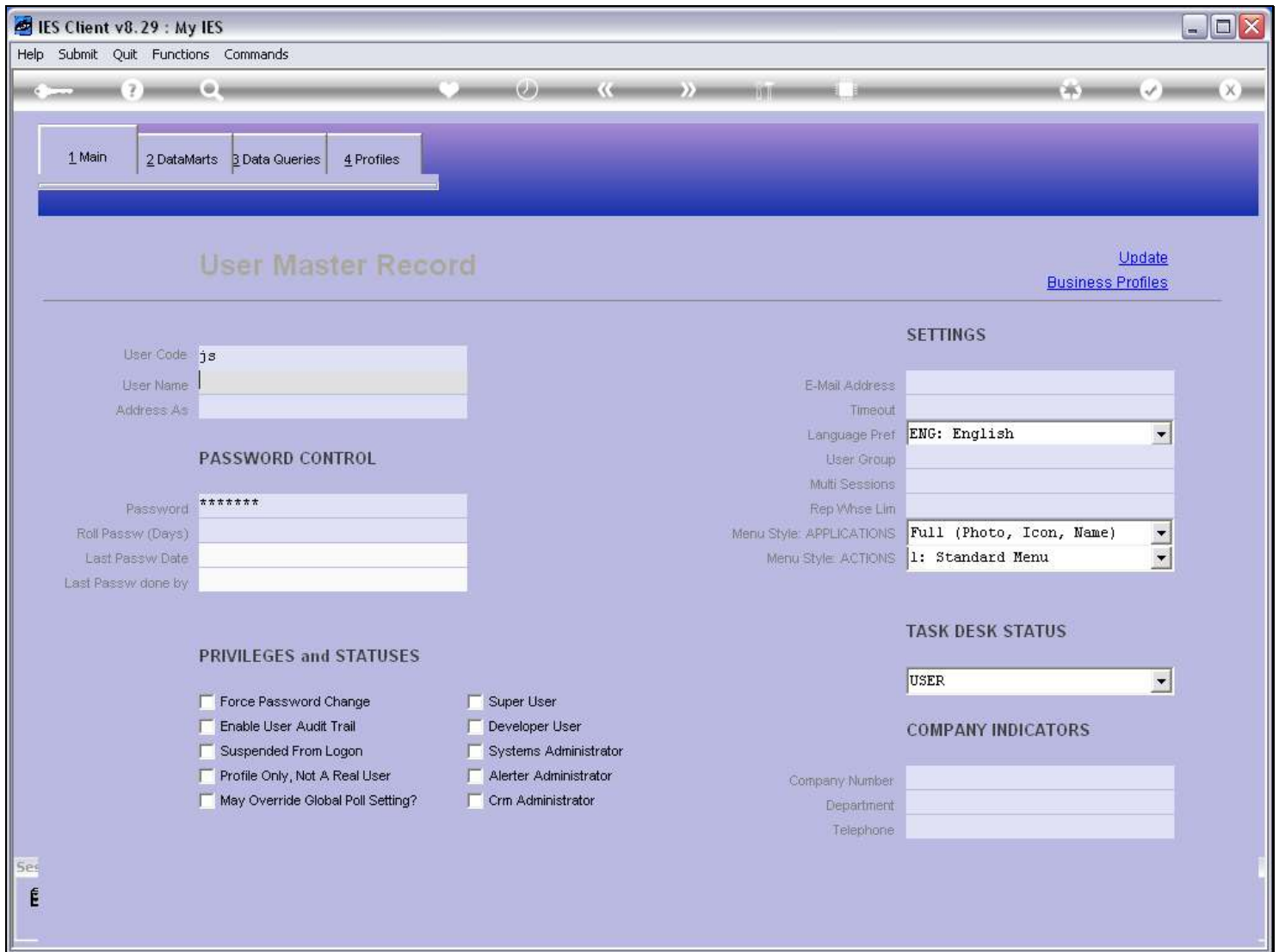
Slide notes

Slide 4 - Slide 4



Slide notes

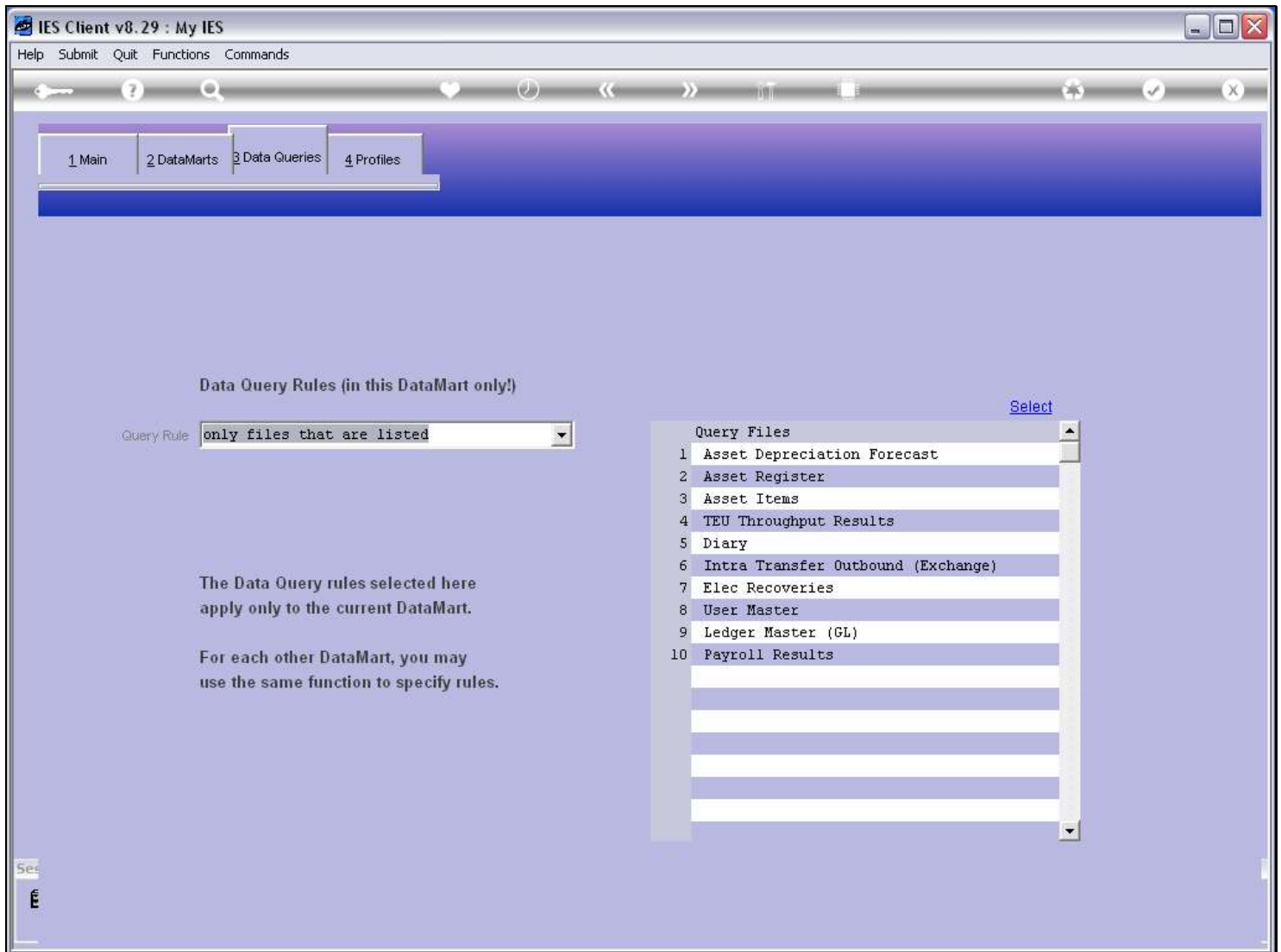
Slide 5 - Slide 5



Slide notes

We select the 'Data Queries' tab.

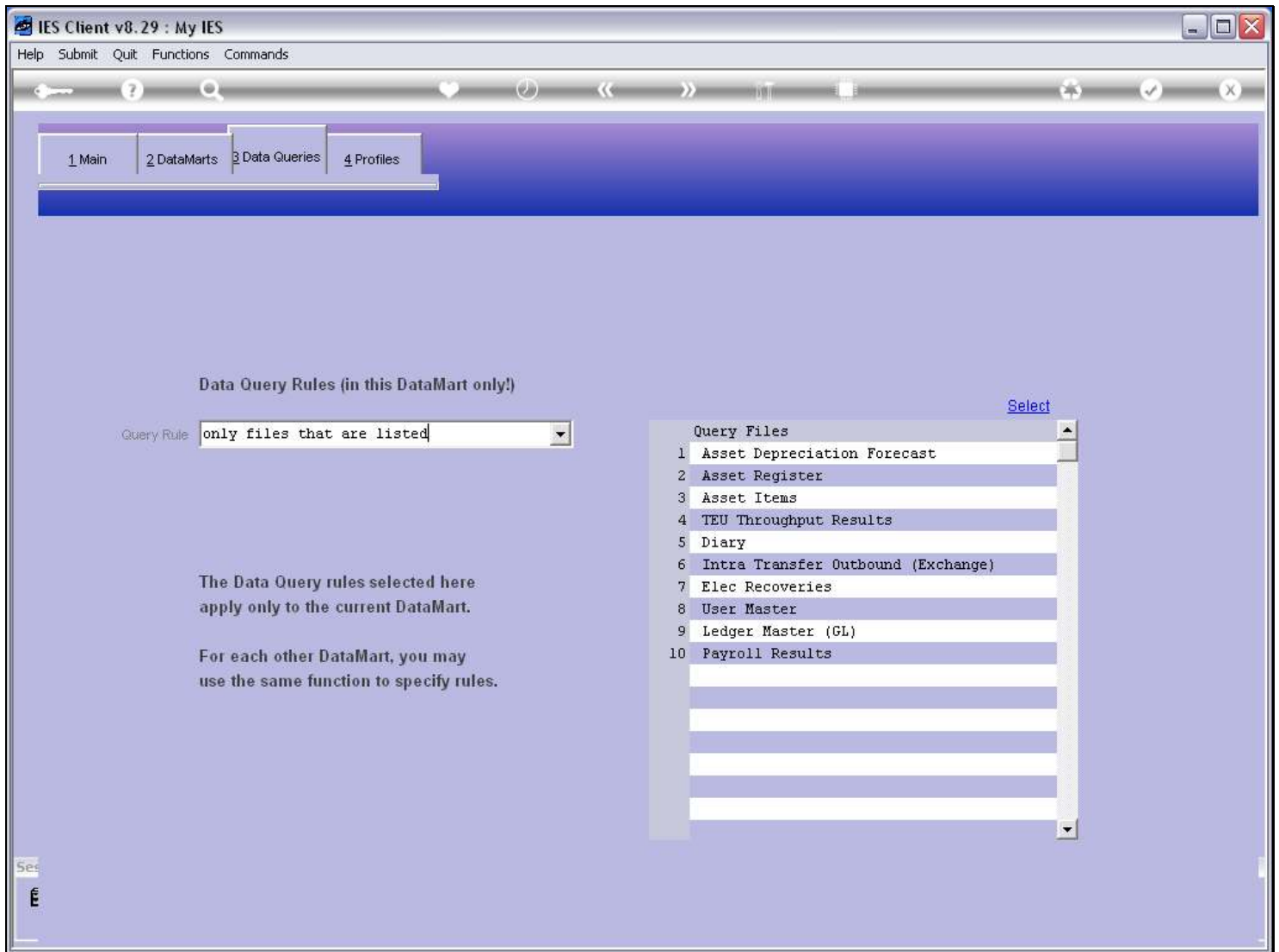
Slide 6 - Slide 6



Slide notes

And we note that although the User Master record is visible in all Datamarts, the Data Query rules for the User is separate in each Datamart. In other words, different Data Query rules can be applied for the User in different Datamarts, and whatever rules we apply here are ONLY for this Datamart.

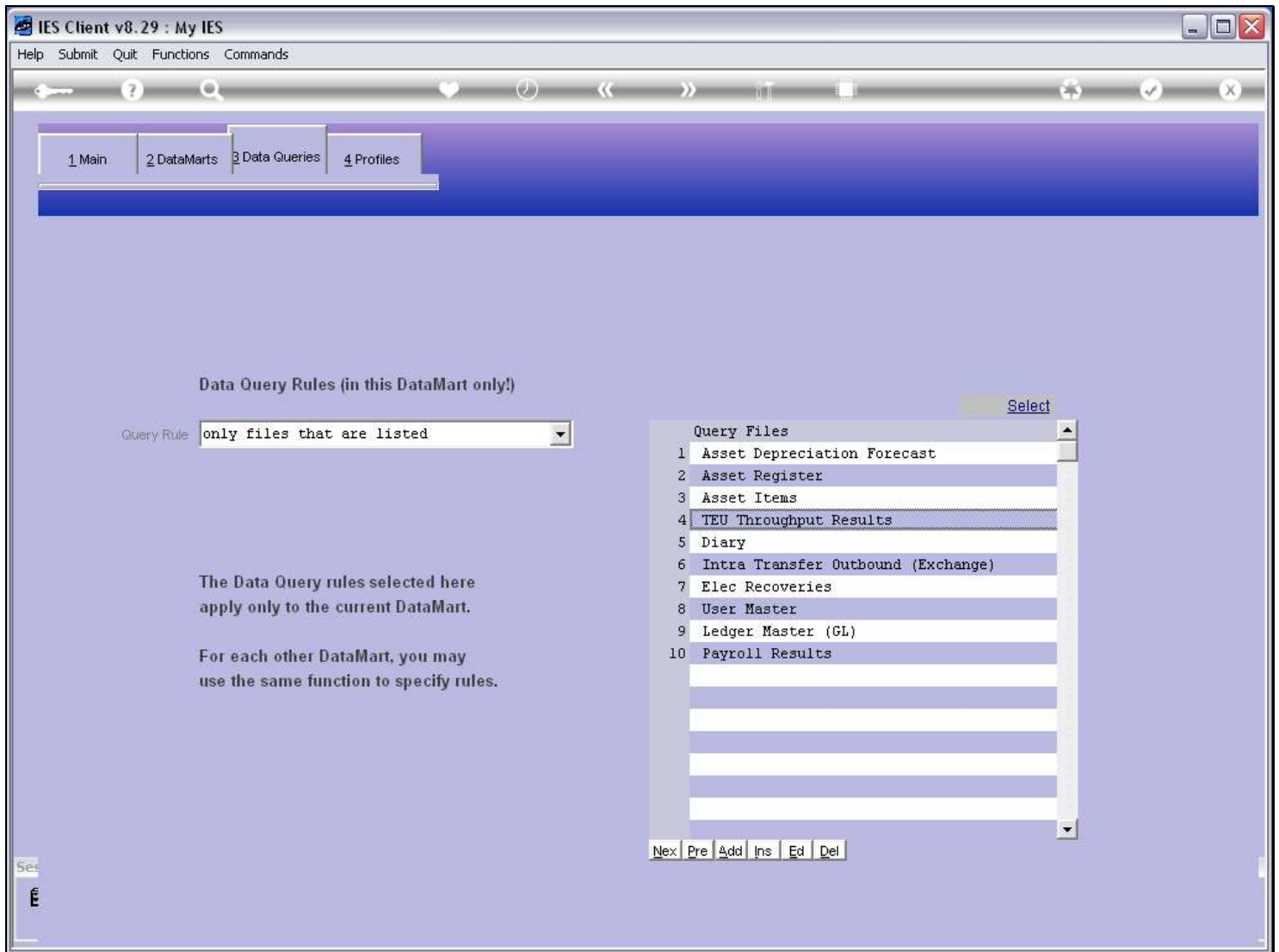
Slide 7 - Slide 7



Slide notes

When the setting is on 'only files' then the User may only query Data Files listed on the right.

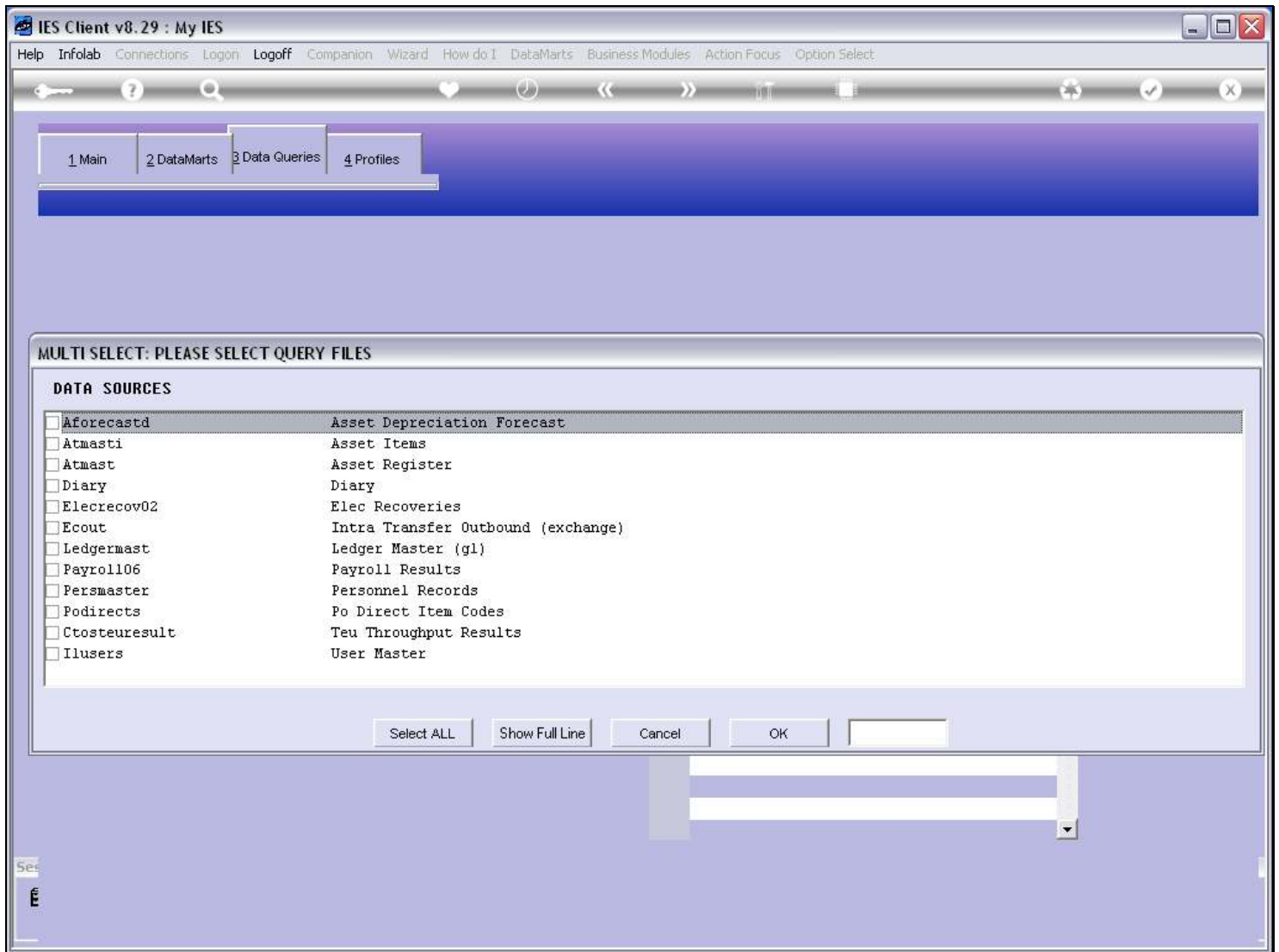
Slide 8 - Slide 8



Slide notes

The 'select' function is available for quick selection of Files.

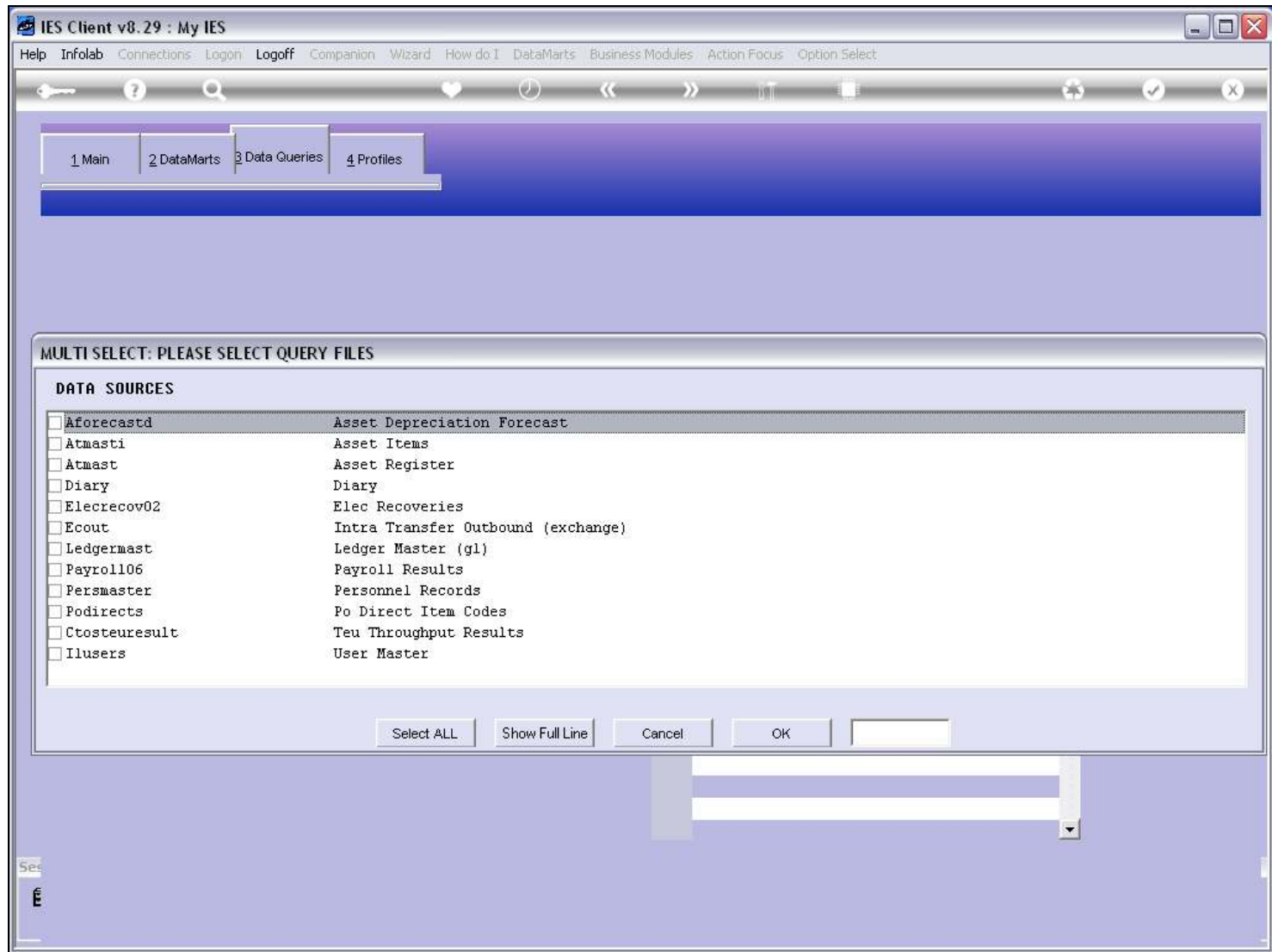
Slide 9 - Slide 9



Slide notes

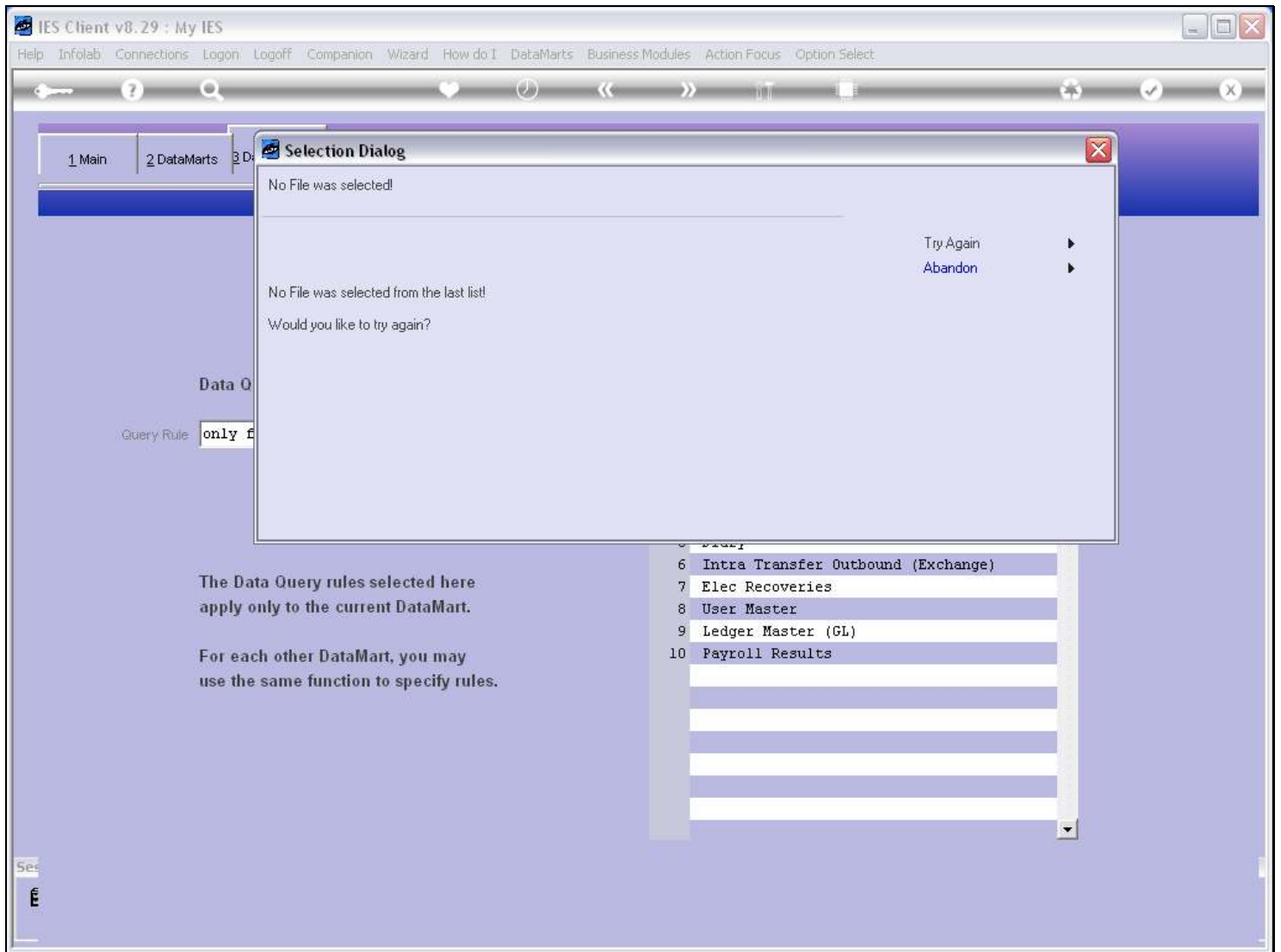
And the only Files offered are those that are currently enabled for Data Queries in this Datamart.

Slide 10 - Slide 10



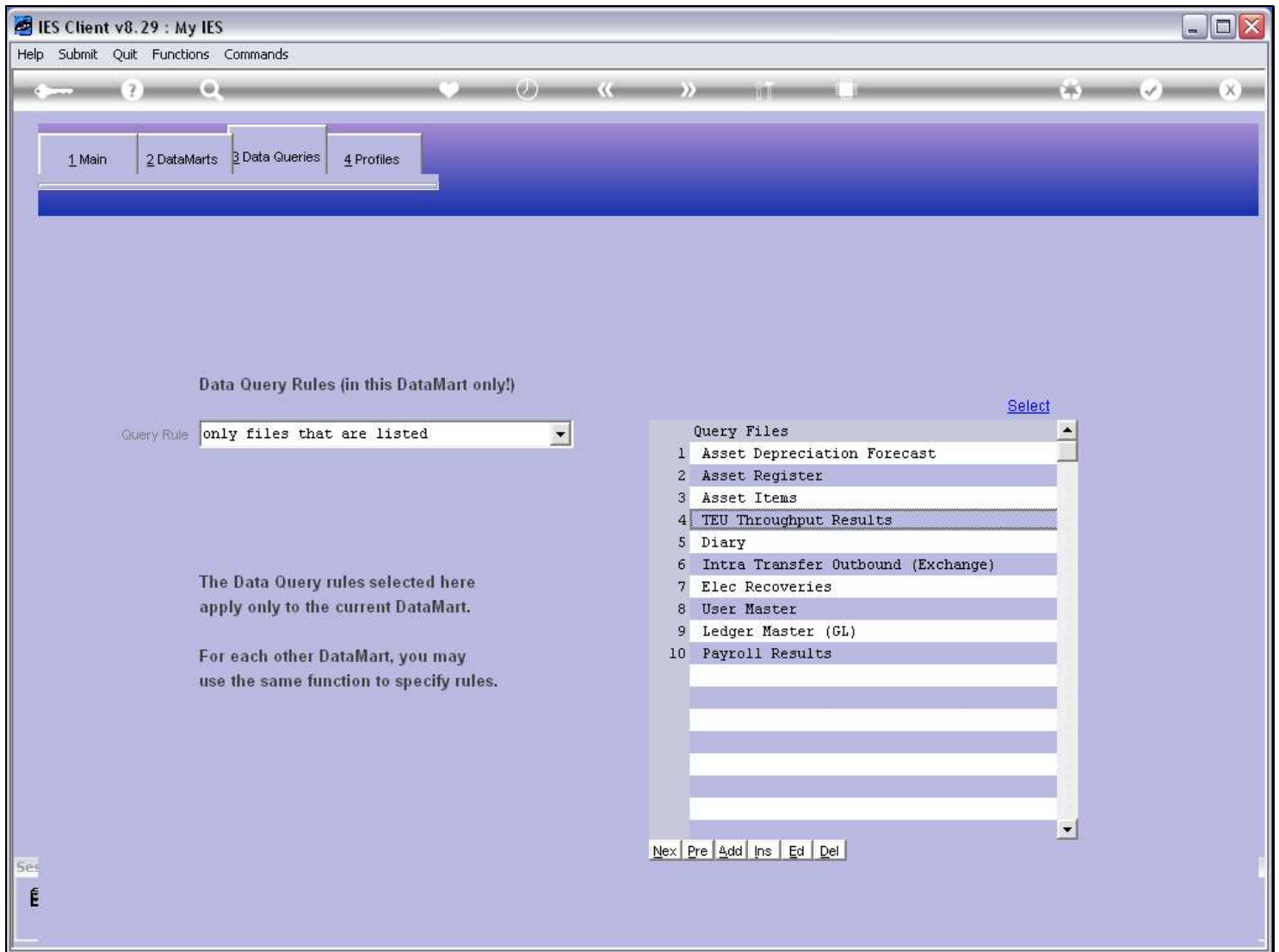
Slide notes

Slide 11 - Slide 11



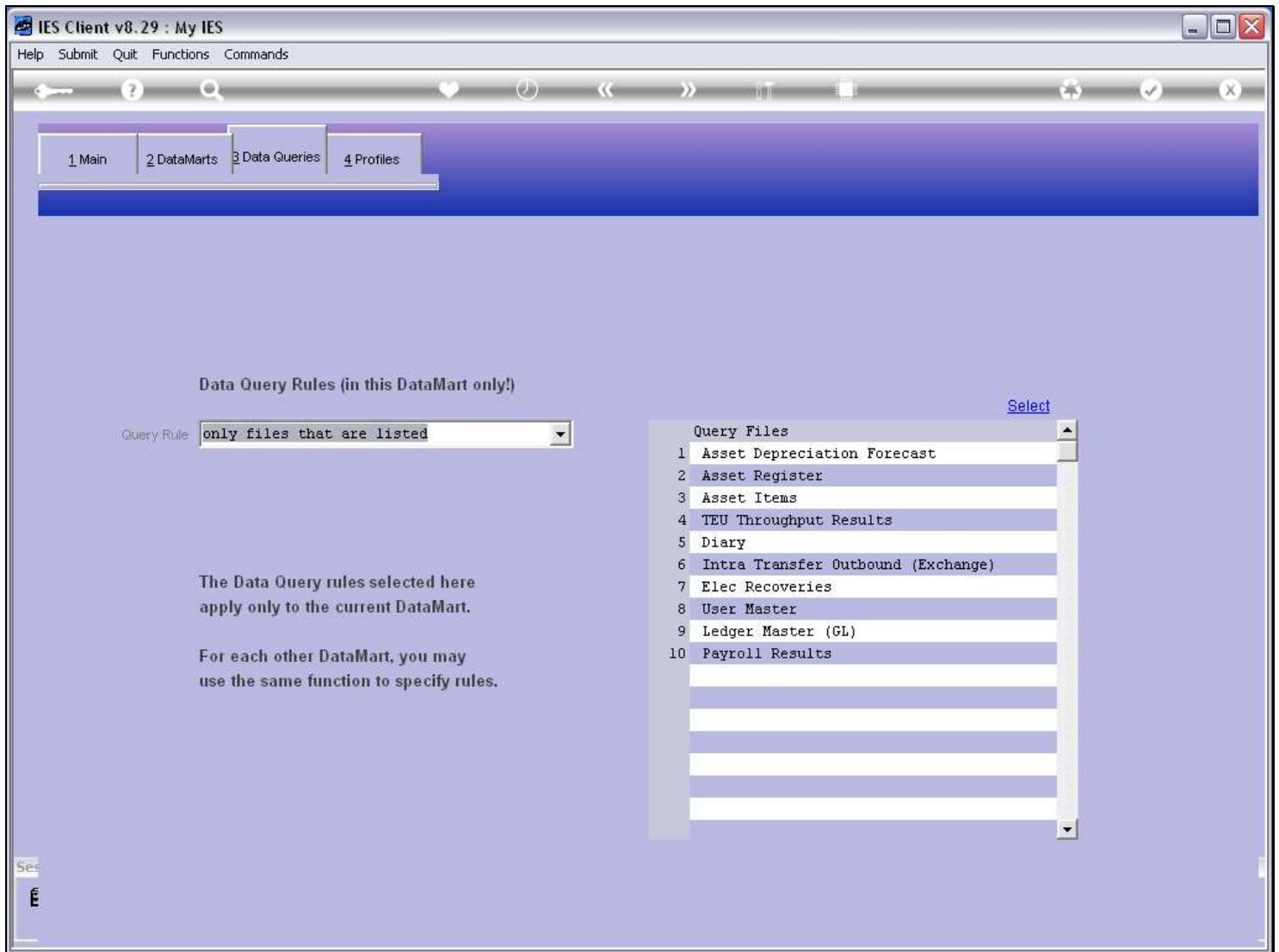
Slide notes

Slide 12 - Slide 12



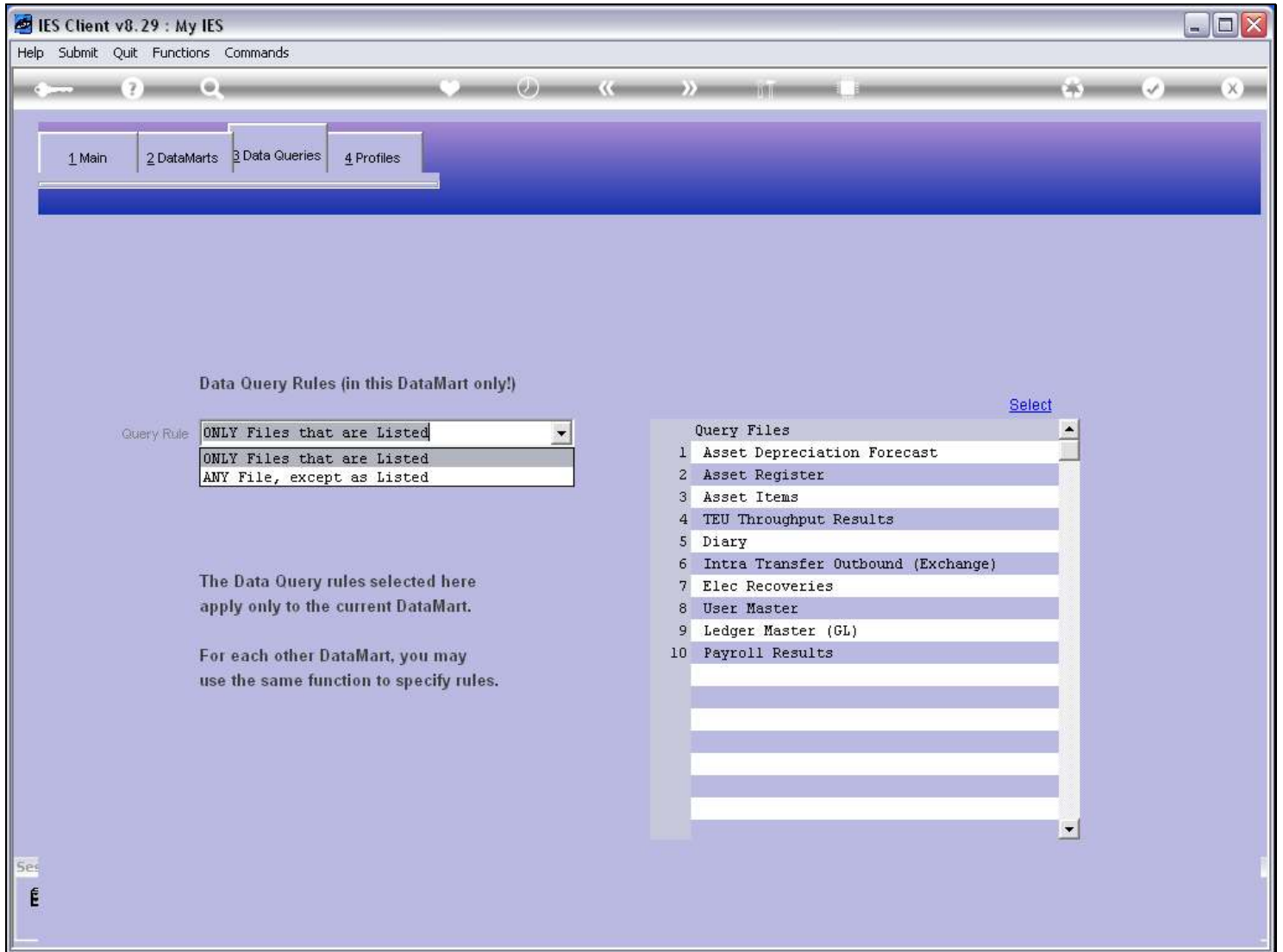
Slide notes

Slide 13 - Slide 13

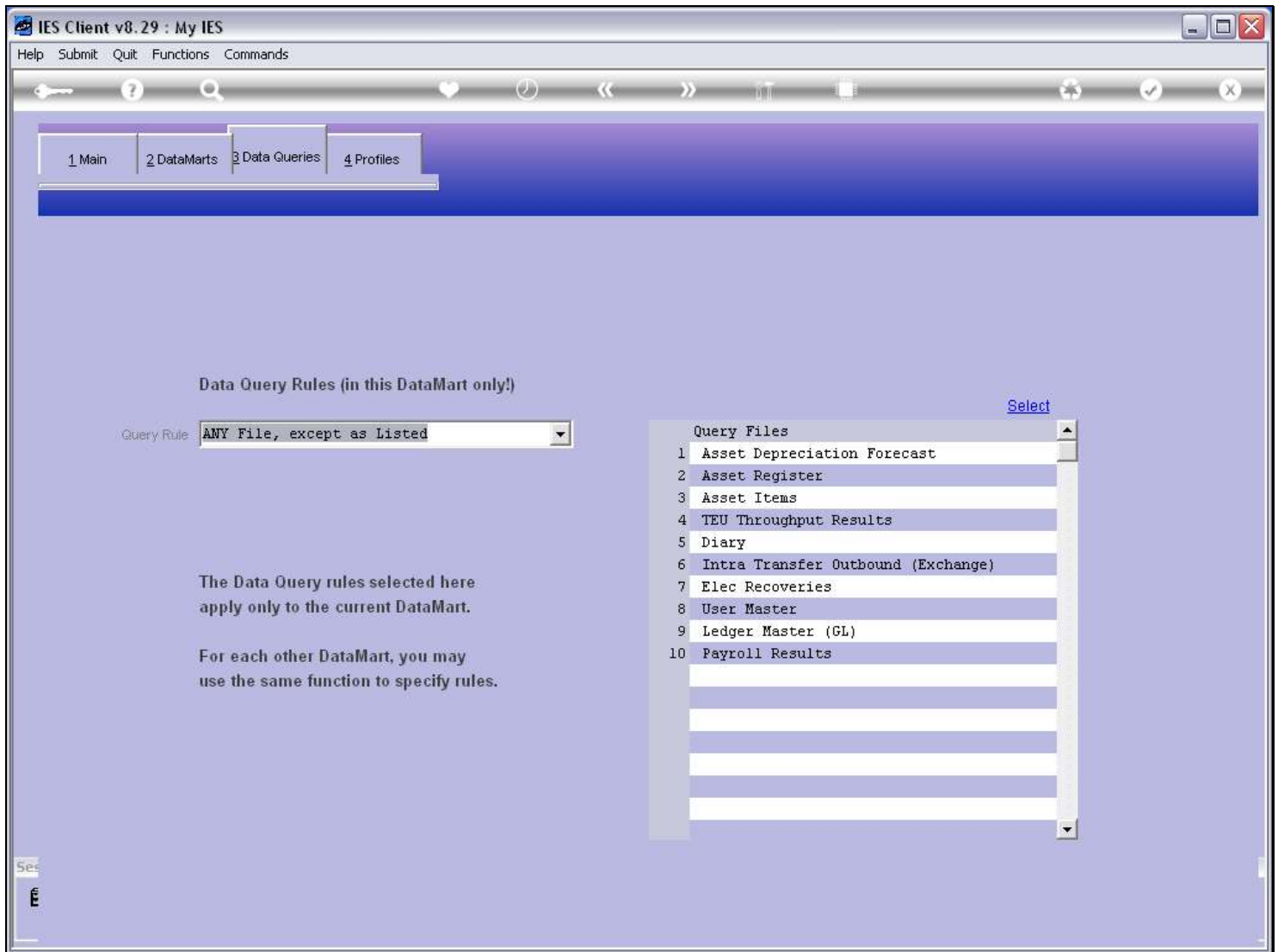


Slide notes

Slide 14 - Slide 14

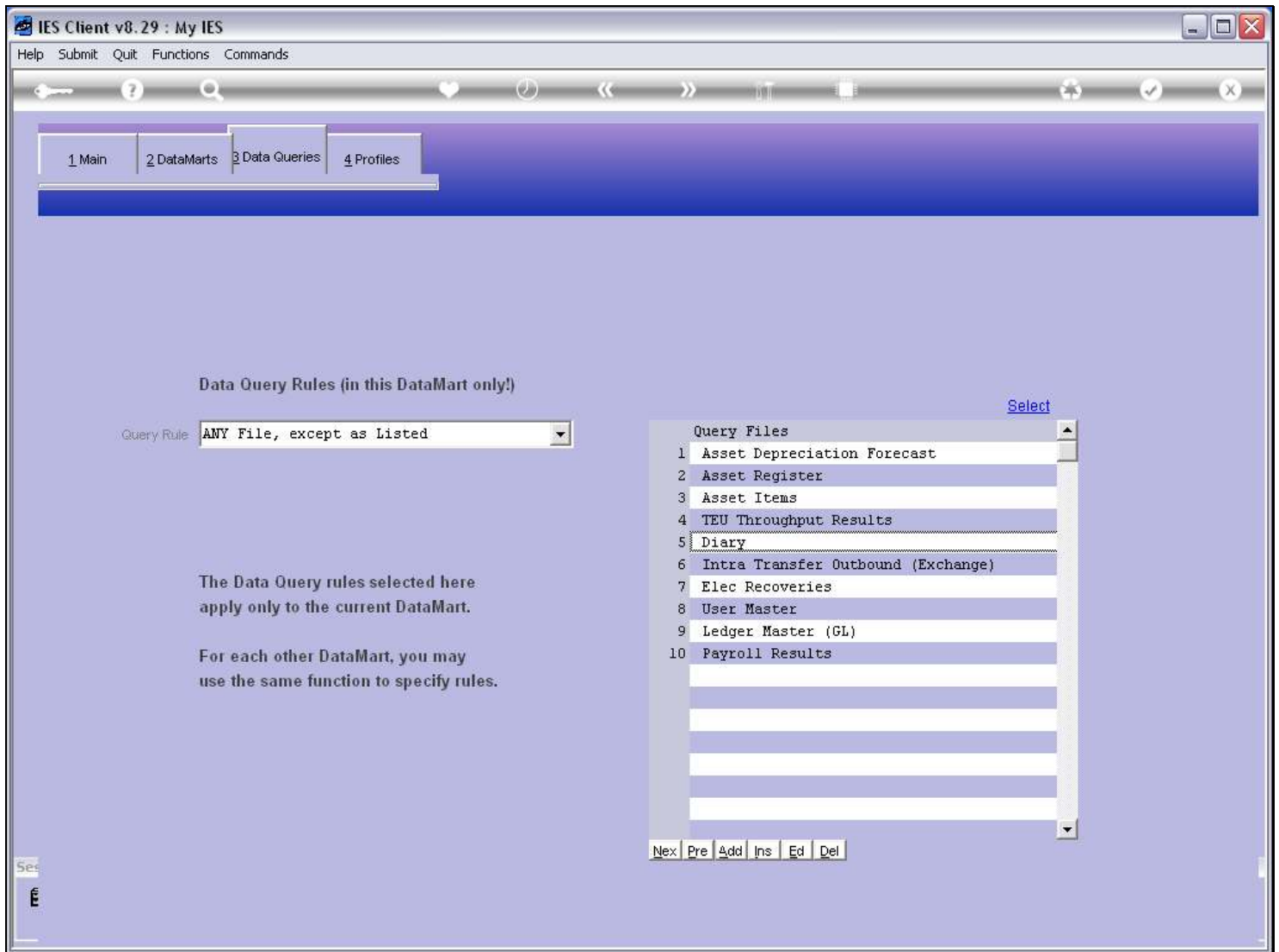


Slide notes

Slide 15 - Slide 15**Slide notes**

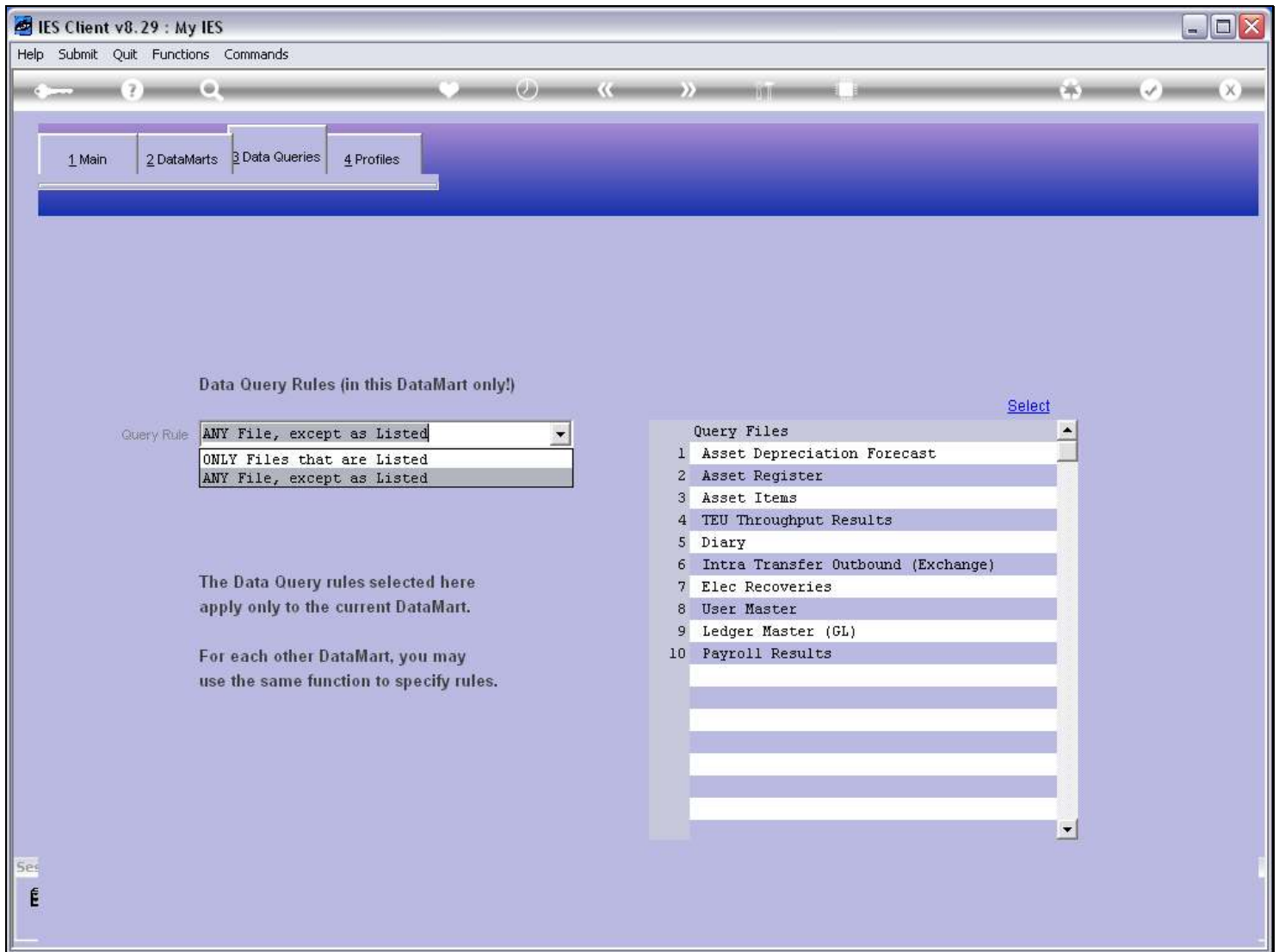
When the setting is 'any file except' then any Files listed on the right become disallowed Files. So we should choose the setting that is most appropriate for easiest selection of rules for the User.

Slide 16 - Slide 16



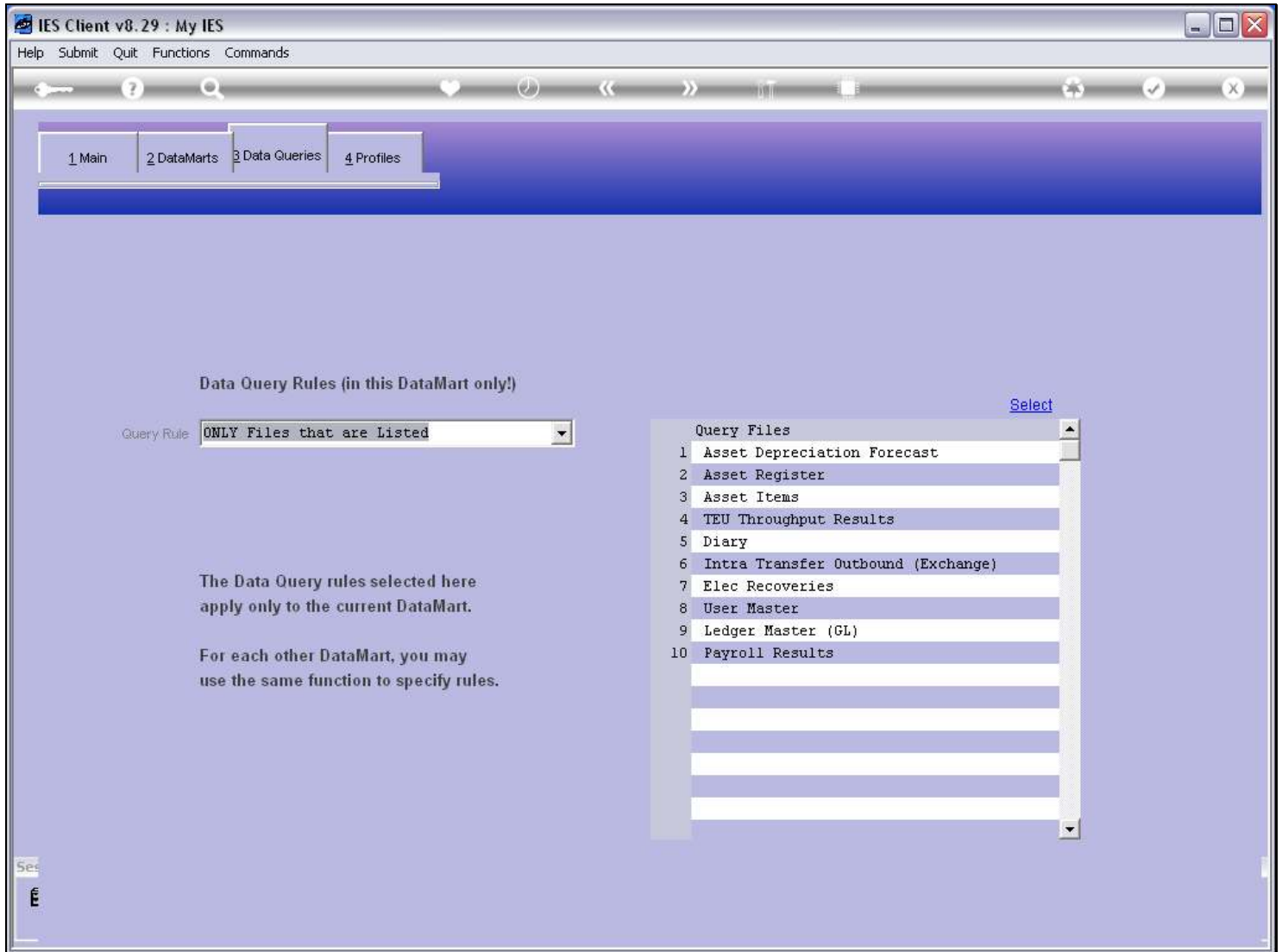
Slide notes

Slide 17 - Slide 17



Slide notes

Slide 18 - Slide 18



Slide notes

Usually, for senior Users, we use the 'any Files' setting, and for junior Users, we usually use the 'only Files' setting. However, this is not a rule and there may be exceptions.