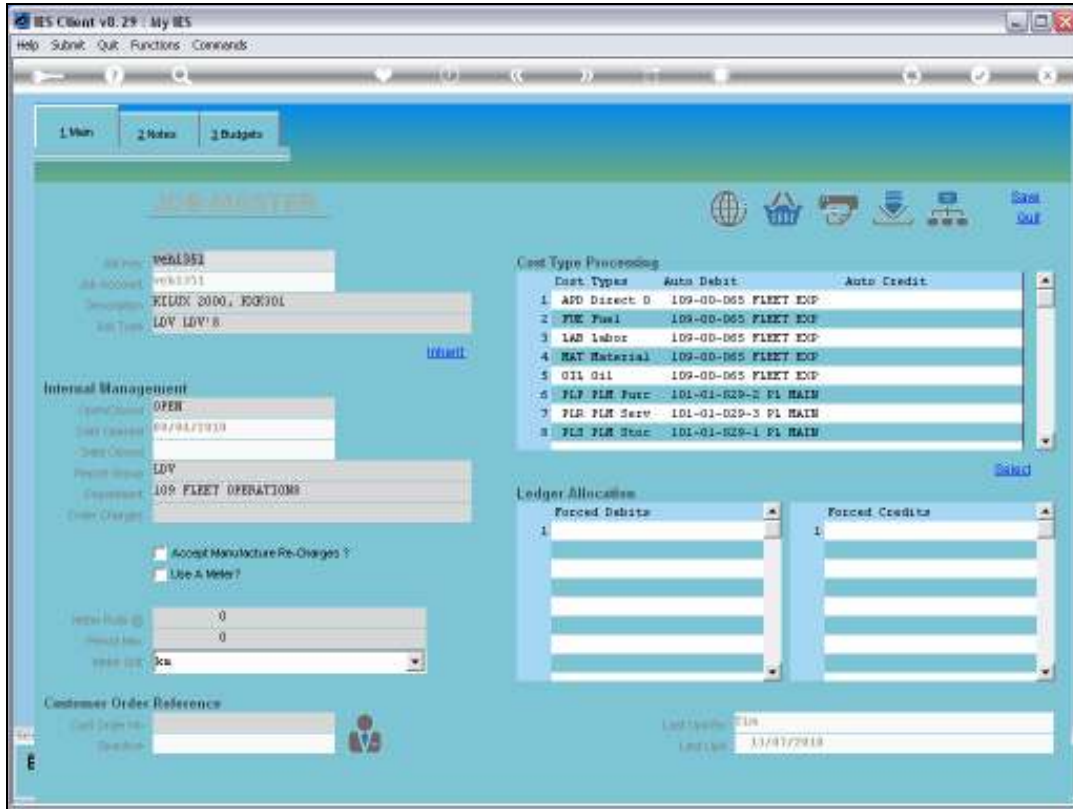


Slide 1

Slide notes: This is a Job Master record. We can order Direct Items on a Purchase Order for direct charging to a Job, provided that the Job has a stated Ledger Account to charge for such purposes.



Slide 2

Slide notes: At 'Order Charges', we should state the GL Account for Purchase Order charges for Direct Items, and then we may Order directly for such a Job. The system will still need a Cost Type as well when we process the Order, and if for that Cost Type there is an Auto Debit stated, then that will be used instead, but the Direct Order Charges Account must be stated to enable ordering.

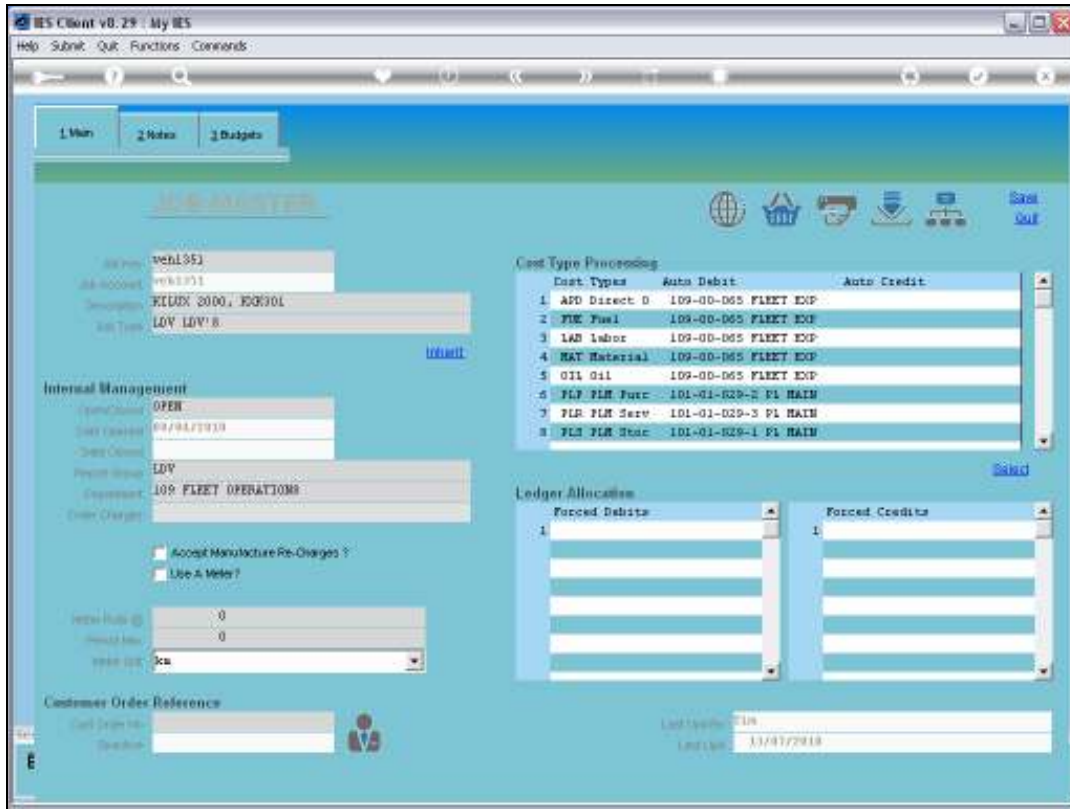
The screenshot displays the IES Client v8.29 interface. At the top, there are navigation tabs for '1 Main', '2 Rates', and '3 Budgets'. The main content area is divided into several sections:

- Vehicle Information:** Fields for 'veh1351', 'VIN: 199801', 'Description: FORD 2000, FORD', and 'Lot: LDV LDV 8'. A 'Print' button is visible.
- Internal Management:** Fields for 'Open Order: OPEN', 'Date Entered: 01/04/2010', 'Order Number', 'Product Group: LDV', and 'Department: 100 FLEET OPERATIONS'. There are checkboxes for 'Accept Manufacture Re-Charges?' and 'Use A Meter?'. Fields for 'Vehicle Make @', 'Product Make', and 'Vehicle ID' are also present.
- Cost Type Processing:** A table with columns 'Cost Types', 'Auto Debit', and 'Auto Credit'.

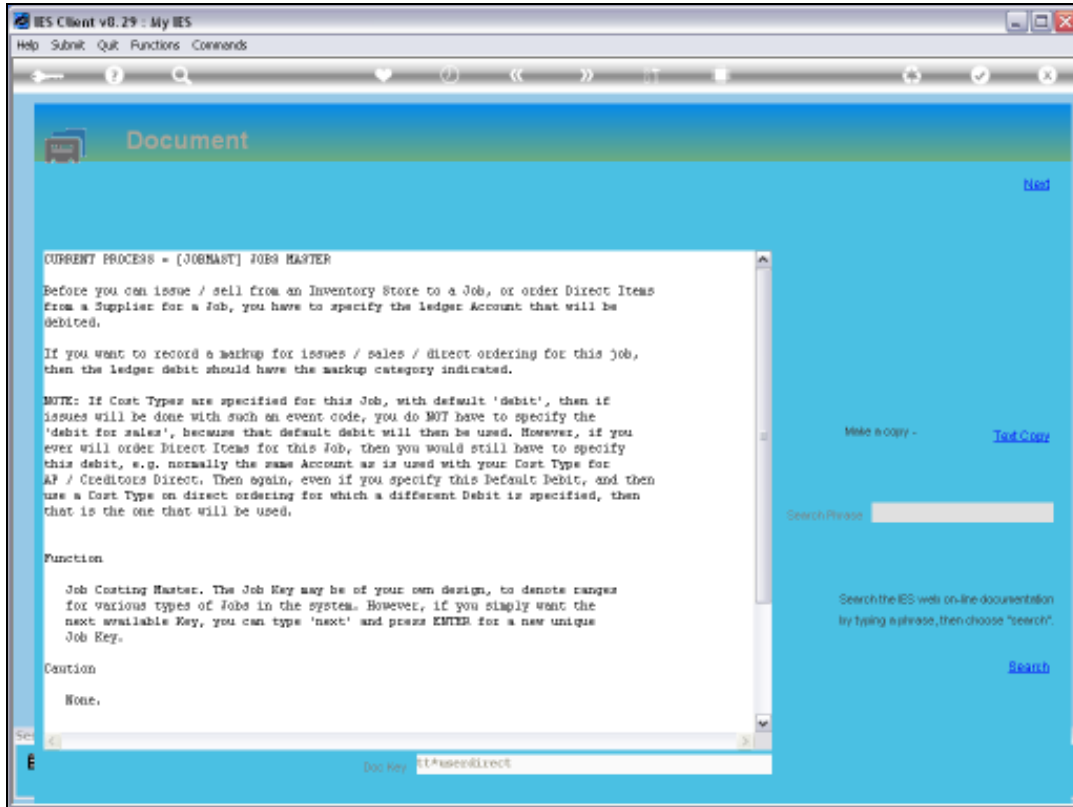
Cost Types	Auto Debit	Auto Credit
1 APD Direct D	109-00-065 FLEET EXP	
2 FUE Fuel	109-00-065 FLEET EXP	
3 LAB Labor	109-00-065 FLEET EXP	
4 MAT Material	109-00-065 FLEET EXP	
5 OIL Oil	109-00-065 FLEET EXP	
6 PIR PIR Misc	101-01-020-2 P1 MAIN	
7 PIR PIR Serv	101-01-020-3 P1 MAIN	
8 PIR PIR Misc	101-01-020-1 P1 MAIN	
- Ledger Allocation:** Two empty tables for 'Forced Debits' and 'Forced Credits', each with a single entry '1' in the first row.
- Customer Order Reference:** Fields for 'Card Order No.' and 'Description'. A 'Print' button is also present.

At the bottom right, there are fields for 'Last Update: 01/04' and 'Last User: 137477918'. The interface includes a menu bar (Help, Submit, Quit, Functions, Comments) and a toolbar with various icons.

Slide 3  
Slide notes:

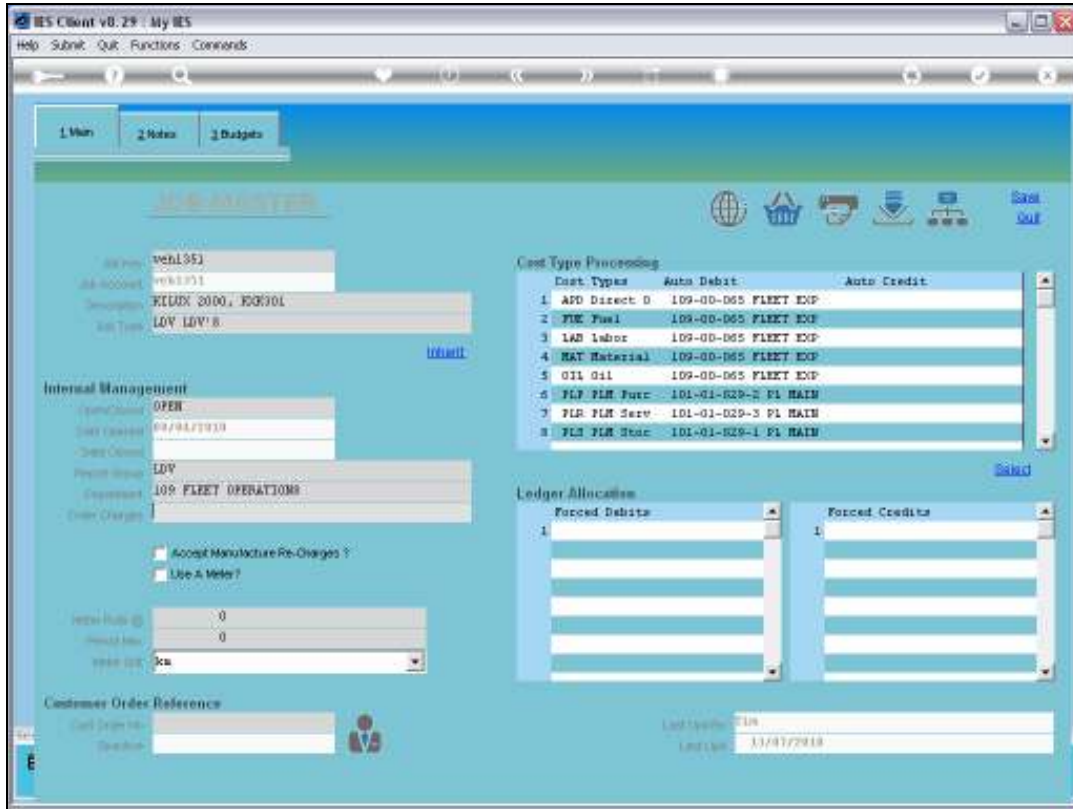


Slide 4  
Slide notes:

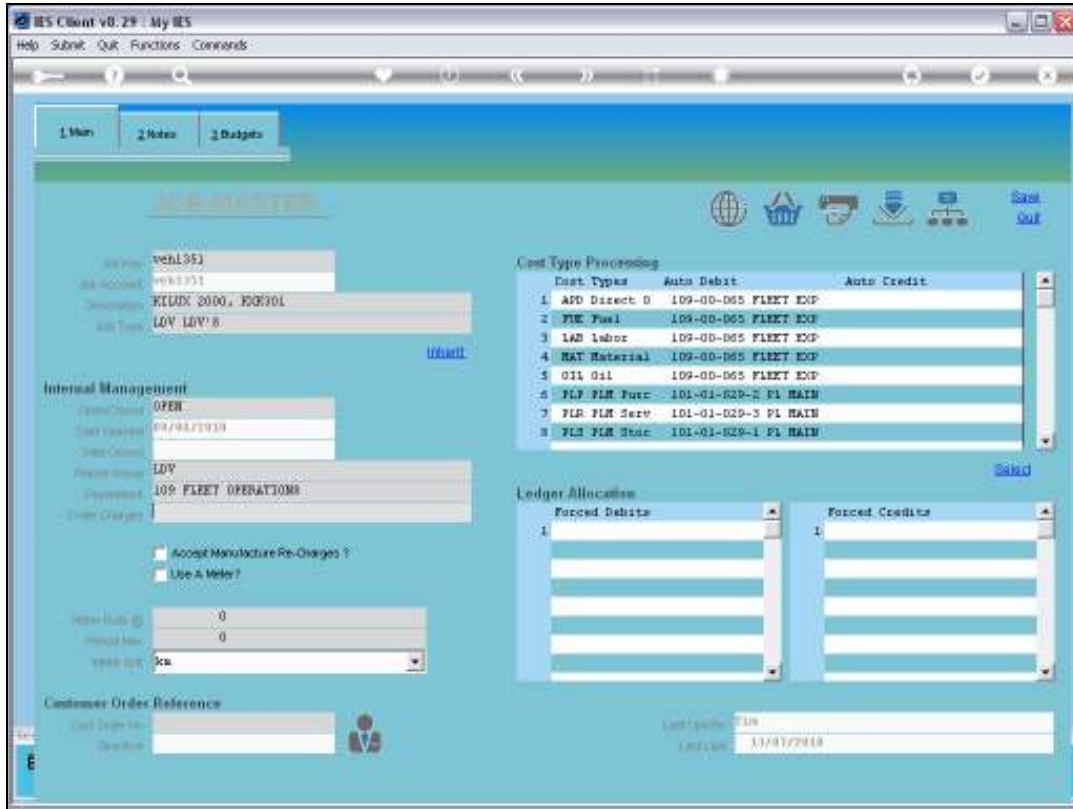


Slide 5

Slide notes: The Help explains.



Slide 6  
Slide notes:



Slide 7  
Slide notes: