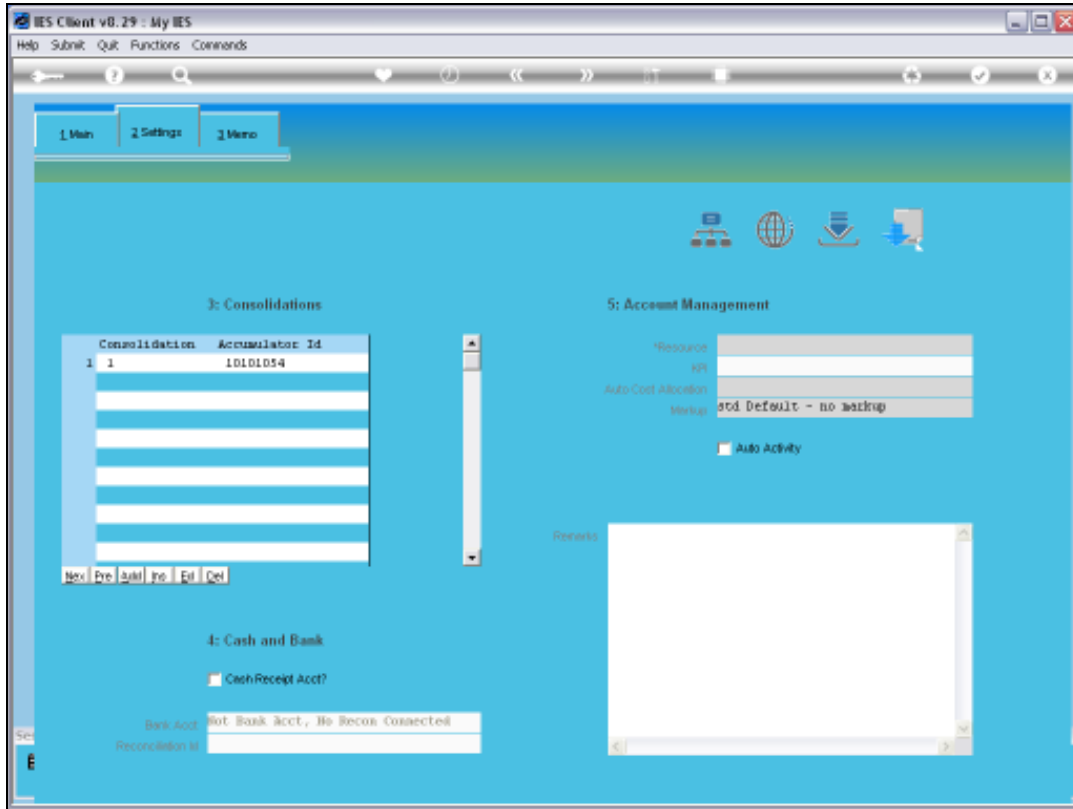


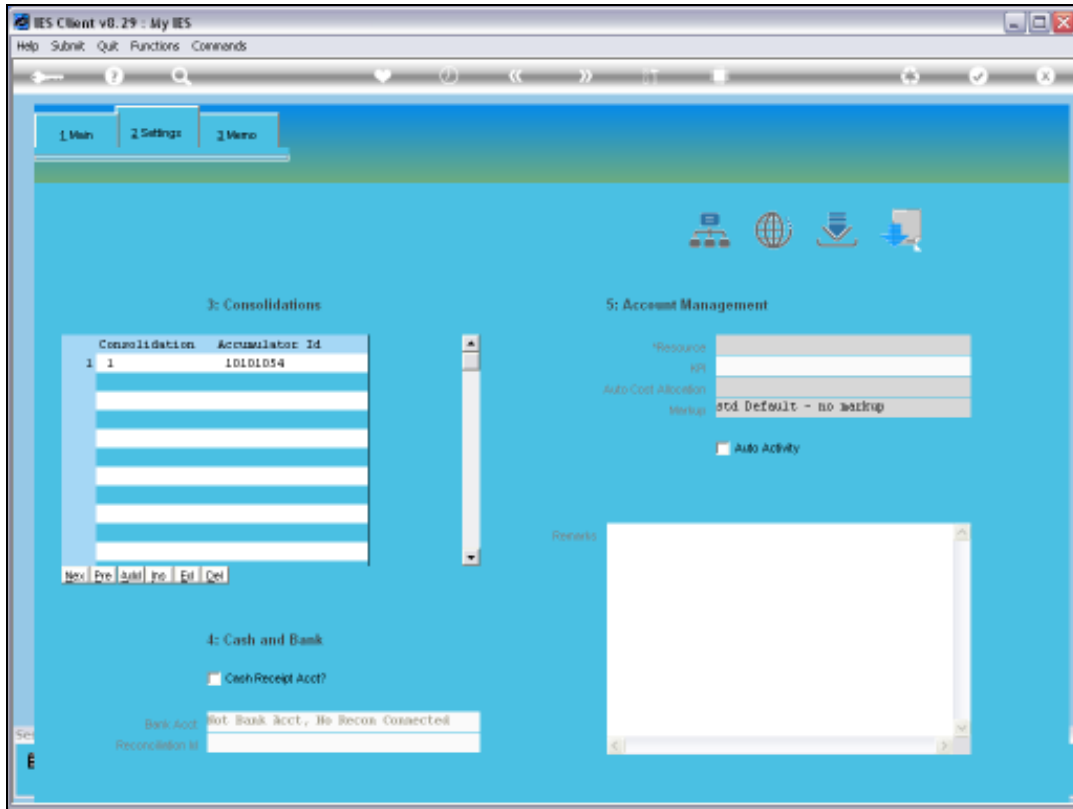
Slide 1

Slide notes: Purchase Orders may include Stock Items and also Direct Items. The Direct Items have to be charged somewhere, and among other options they can be charged to Ledger Cost Centres, and even to Debtor Accounts. Here we have a Ledger Master record.

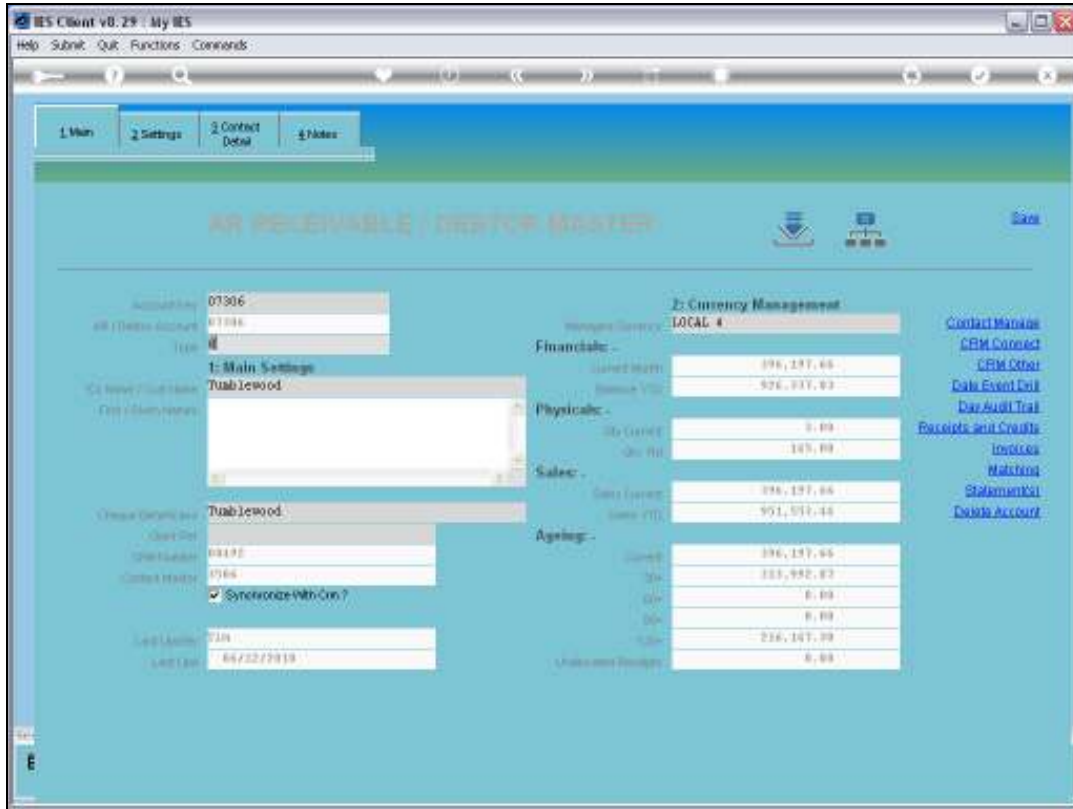


Slide 2

Slide notes: At the settings, we may select a Markup percentage, and if we do, then any Direct Purchase Order charges will be marked up by the stated percentage when it is charged to this Account.

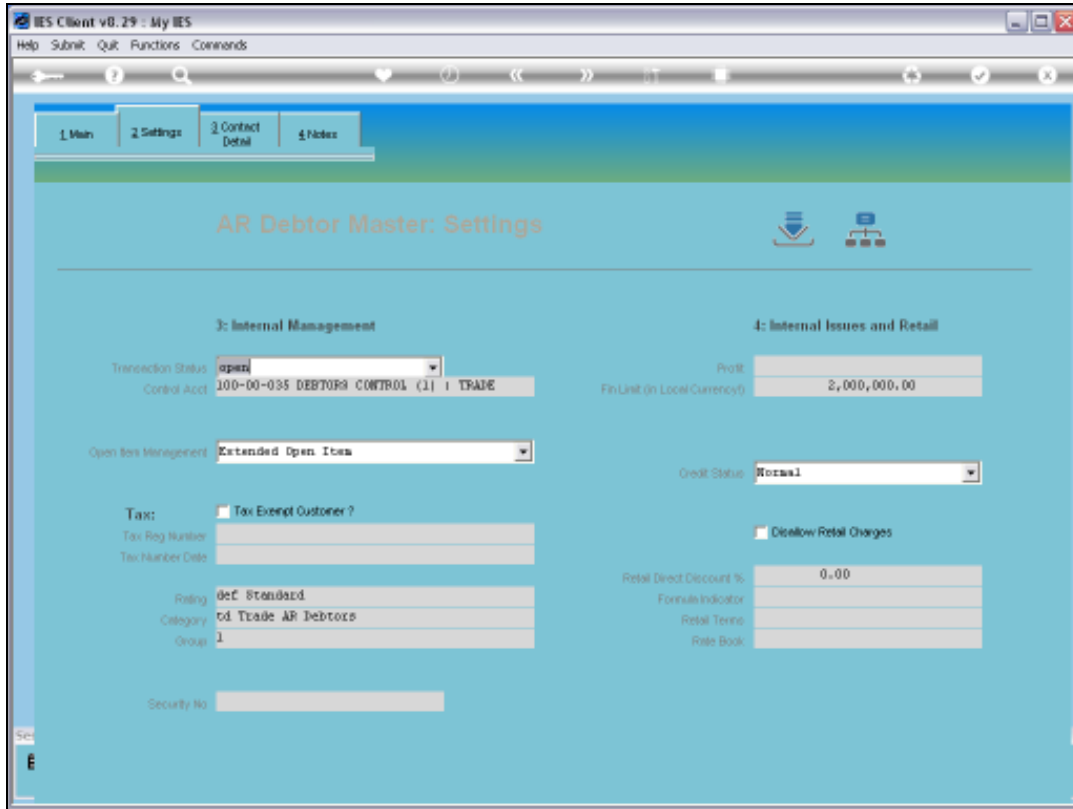


Slide 3
Slide notes:



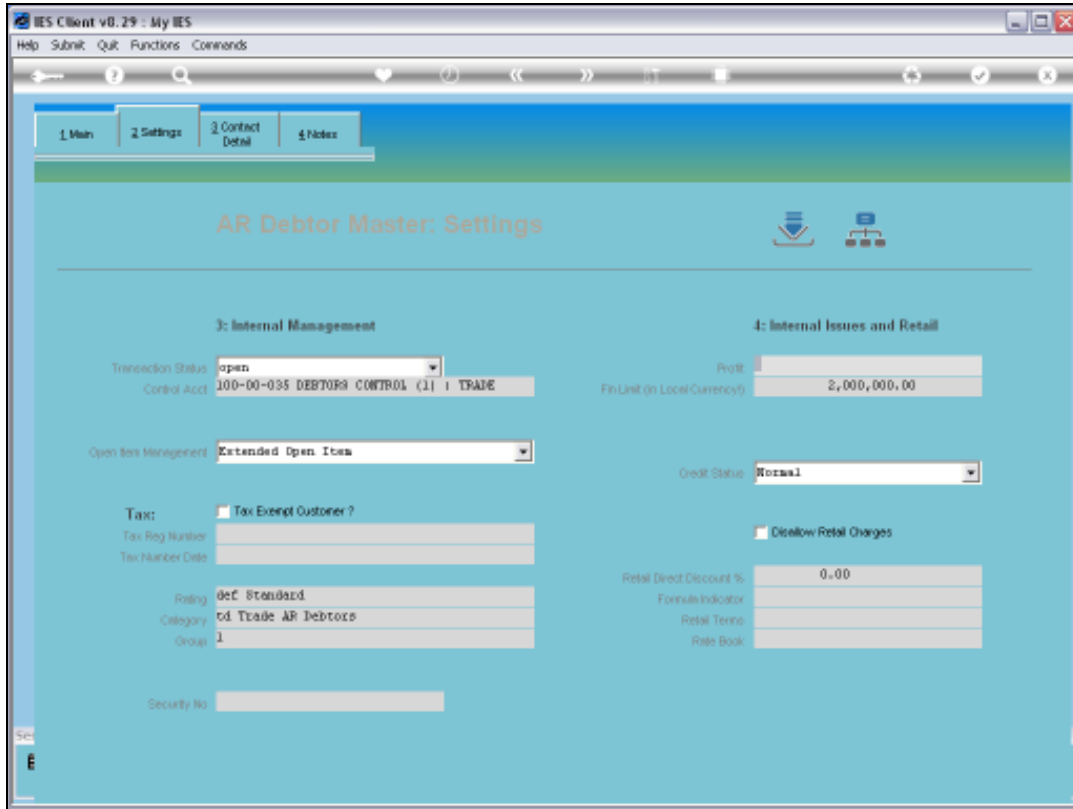
Slide 4

Slide notes: This is an example of a Debtor master record.



Slide 5

Slide notes: Similar to the Ledger Account, we may select a Profit indicator here, and if we do, the percentage markup will be charged when Direct Purchase Items are charged to this Account.



Slide 6
Slide notes: