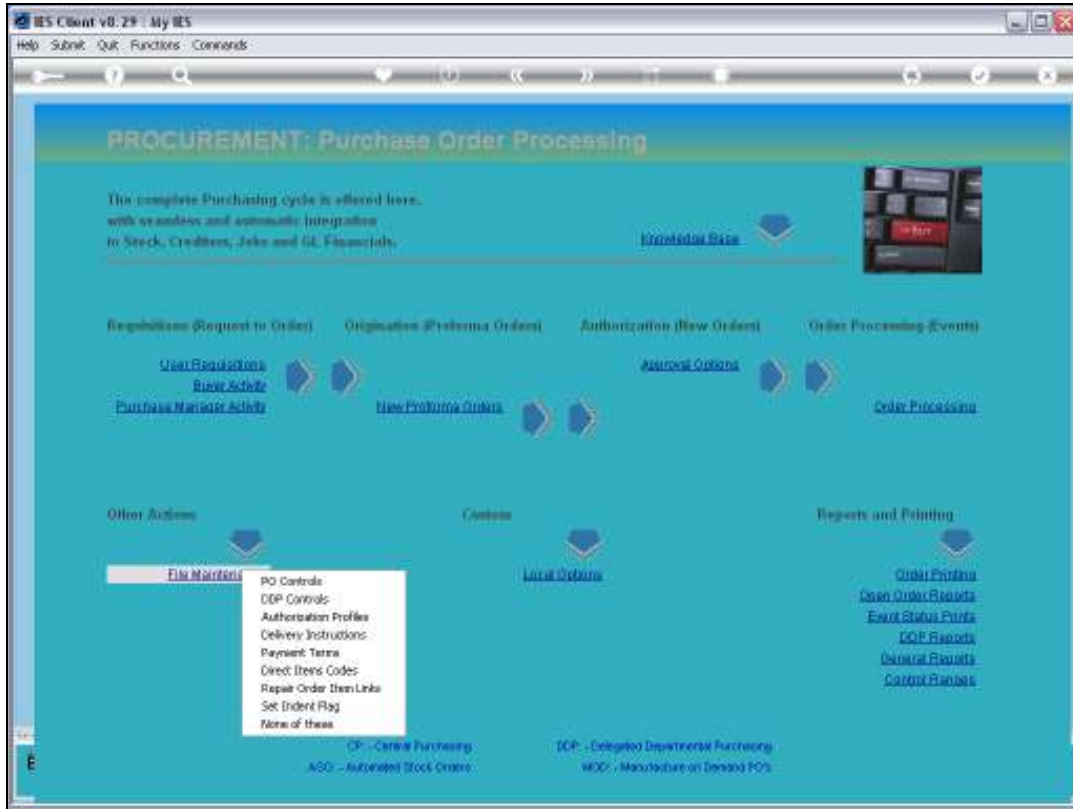


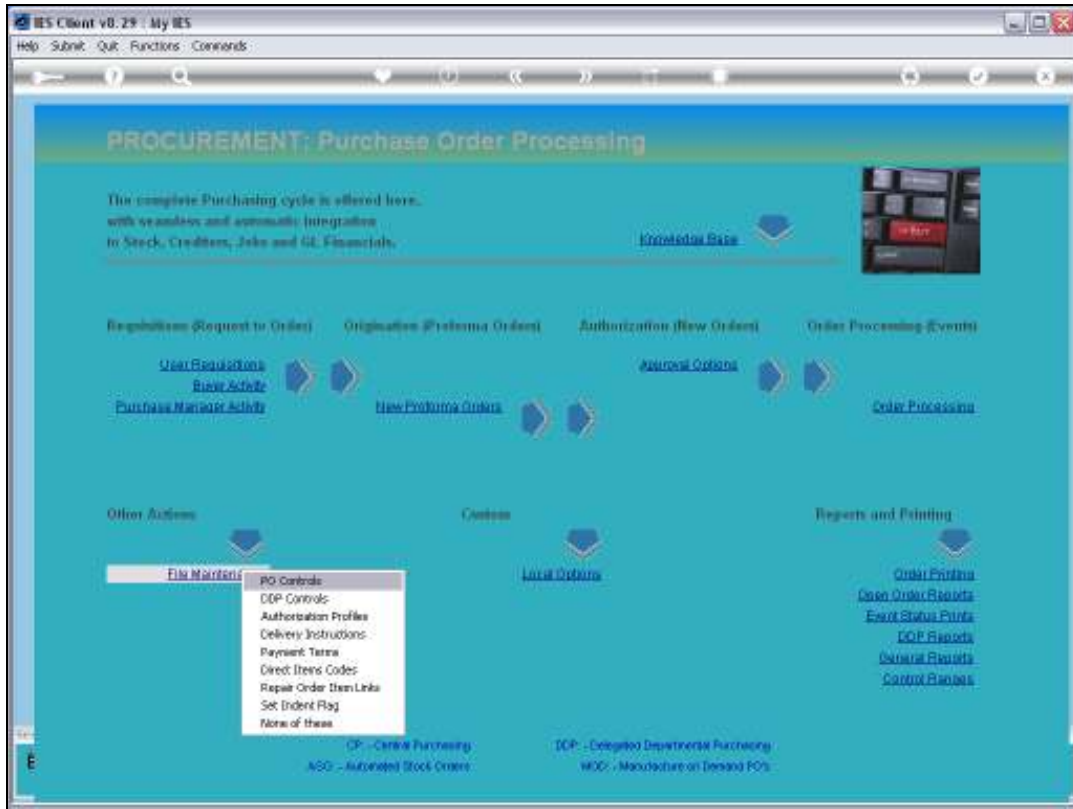


Slide 1

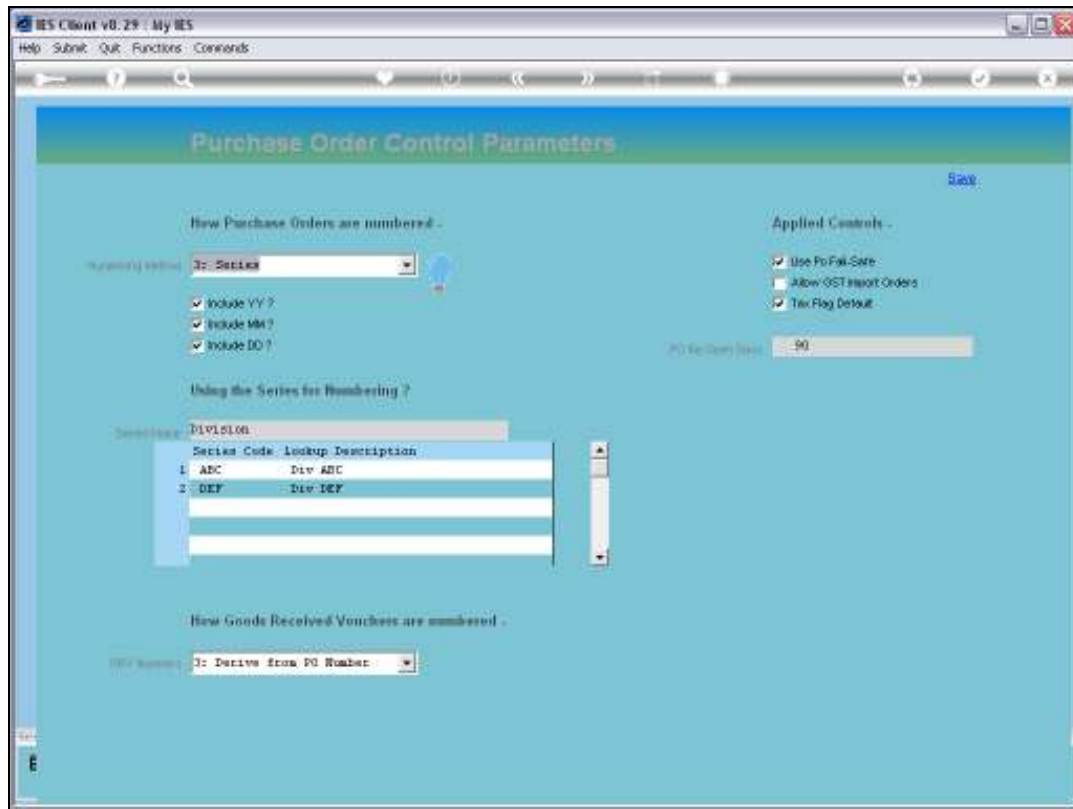
Slide notes: We set our Purchase Controls from the option found at File Maintenance.



Slide 2
Slide notes:

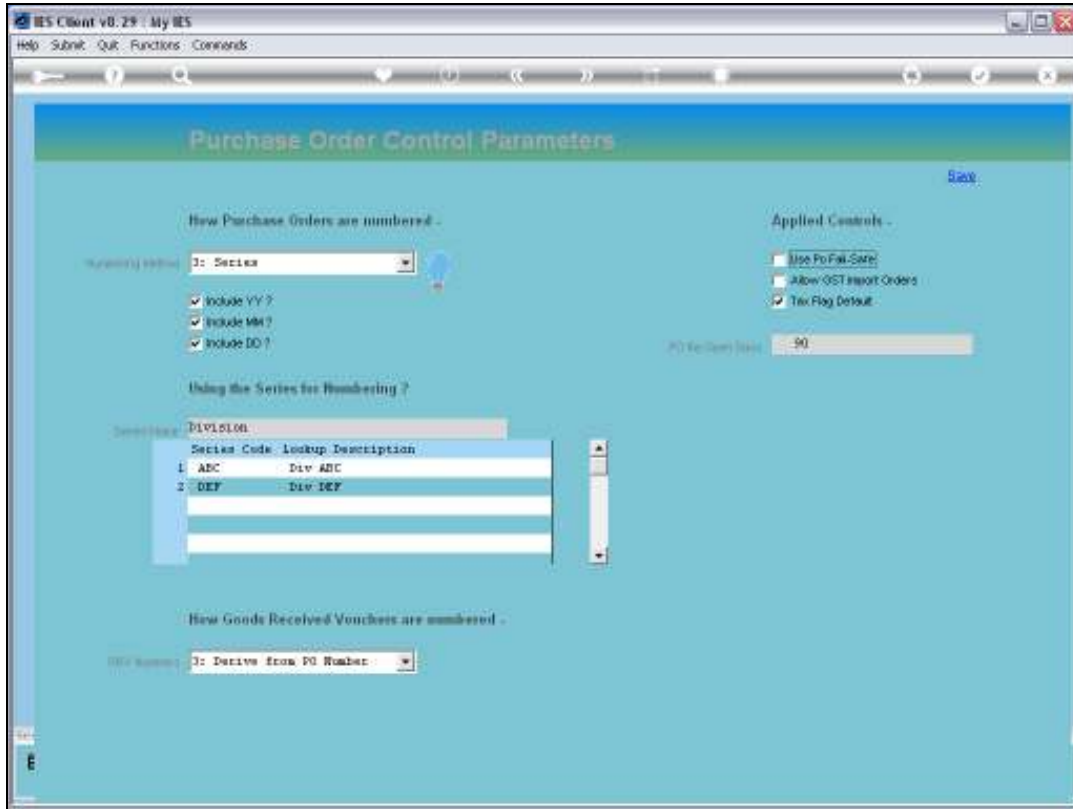


Slide 3
Slide notes:



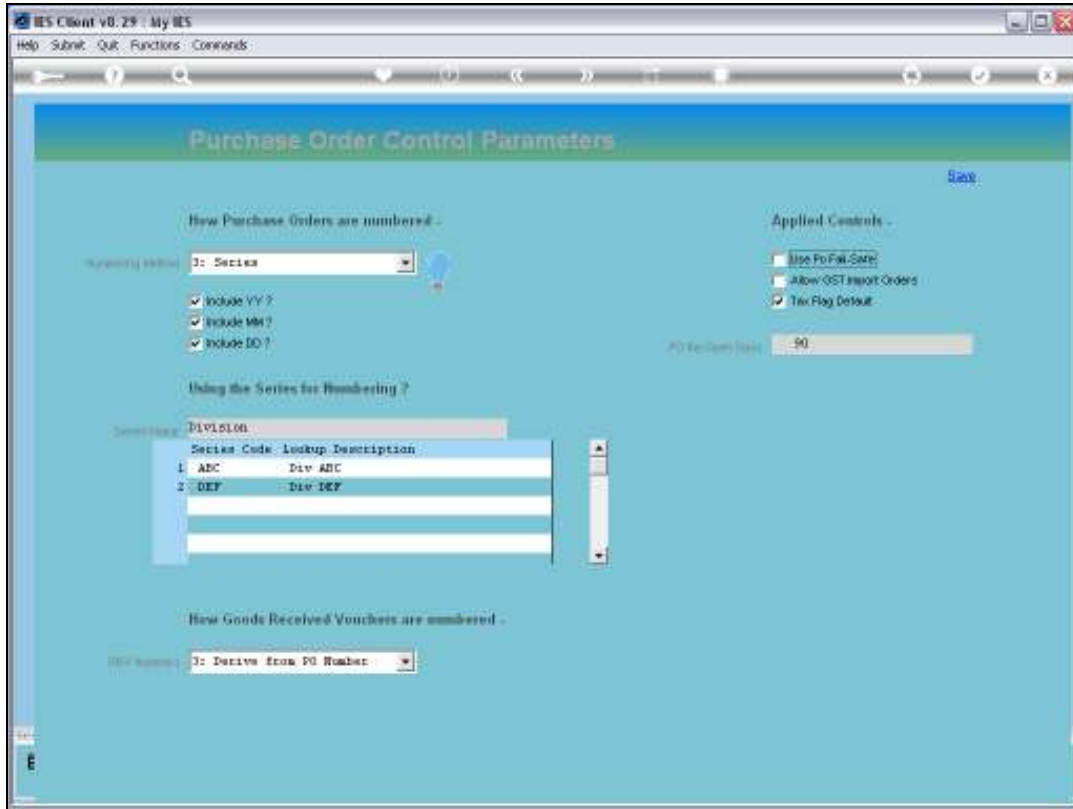
Slide 4

Slide notes: The same option is also used for setting the Purchase Order numbering system, but that is discussed in a separate tutorial. For now, we focus on the Applied Controls.

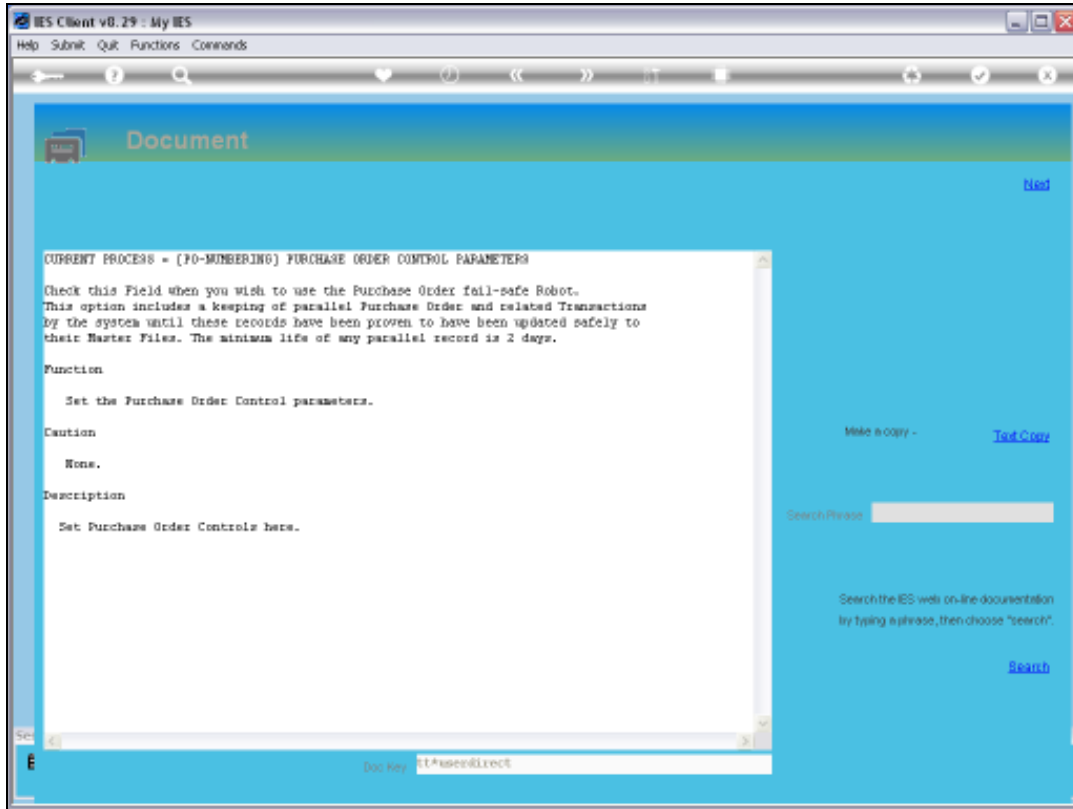


Slide 5

Slide notes: The Fail Safe option is usually on, and is basically a roll-back type of security that is applied for Purchase Orders, and where the various changing states of a Purchase Order is preserved by the system for about 2 days. The recommendation is to have it on then forget about it.

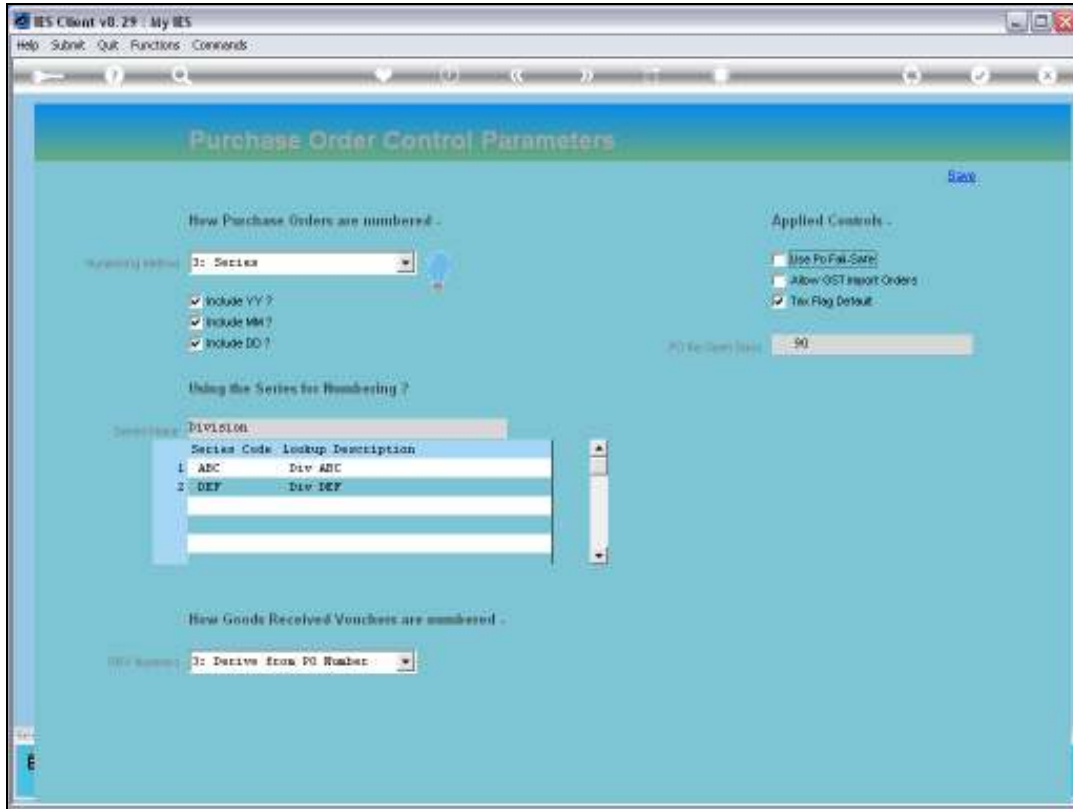


Slide 6
Slide notes:

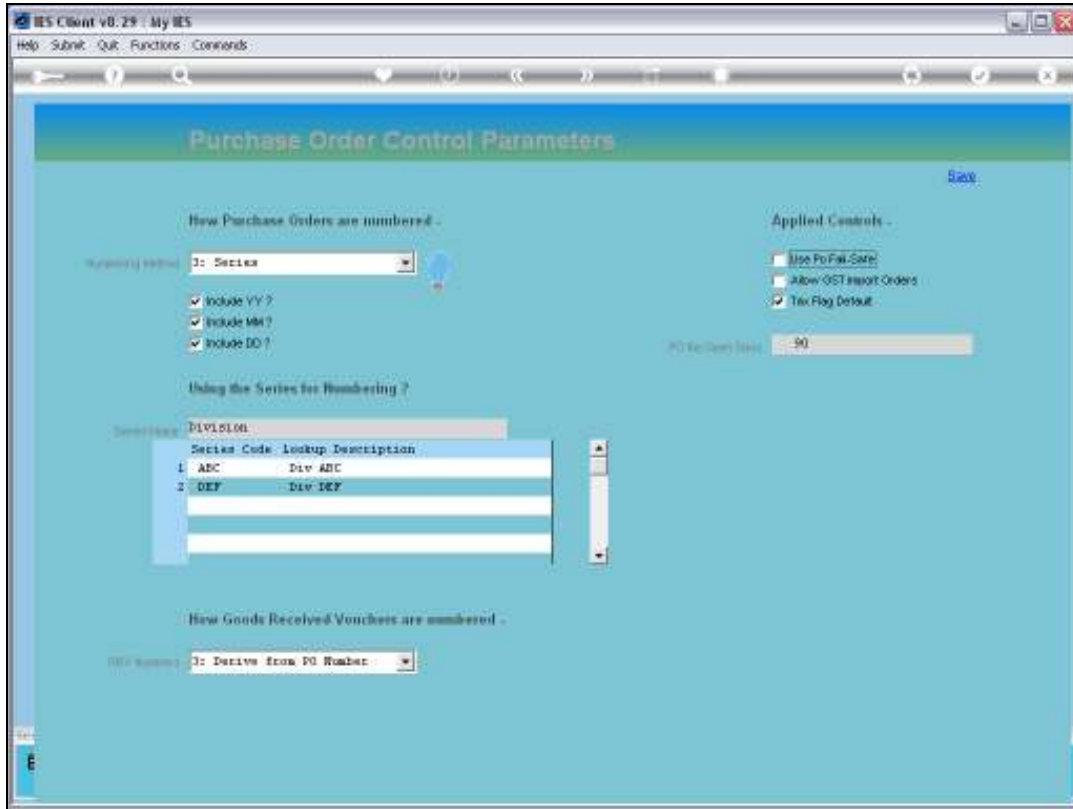


Slide 7

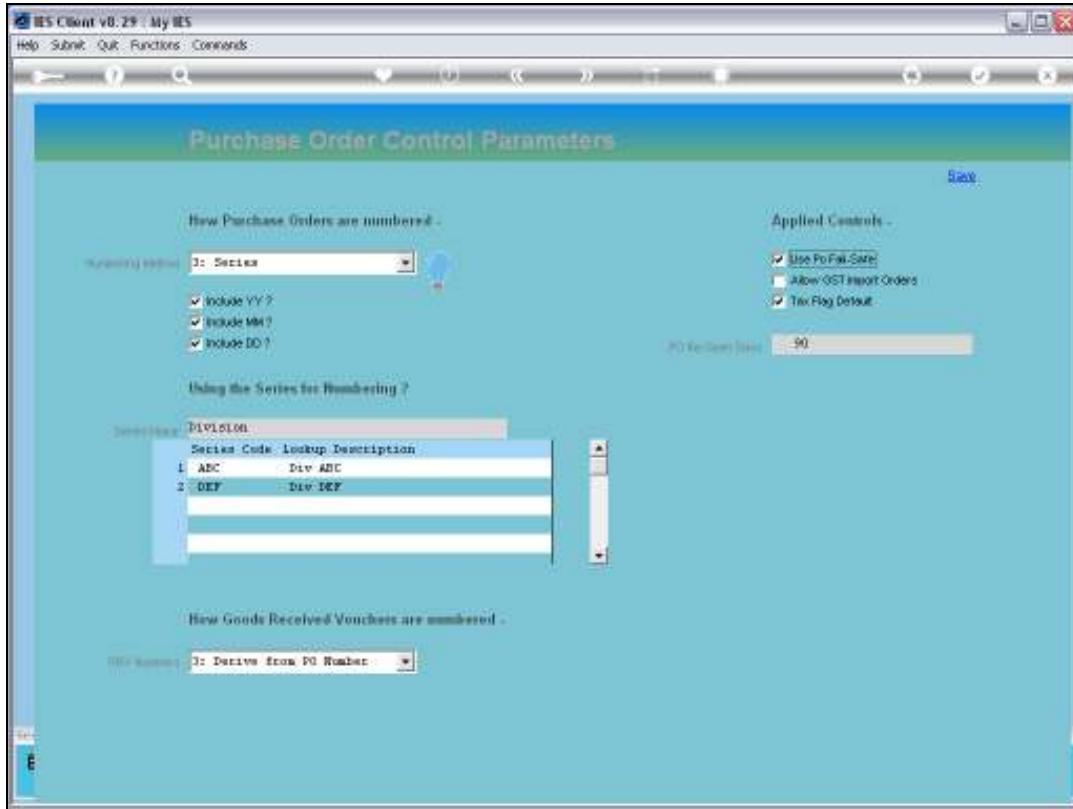
Slide notes: This is the Help on the matter.



Slide 8
Slide notes:

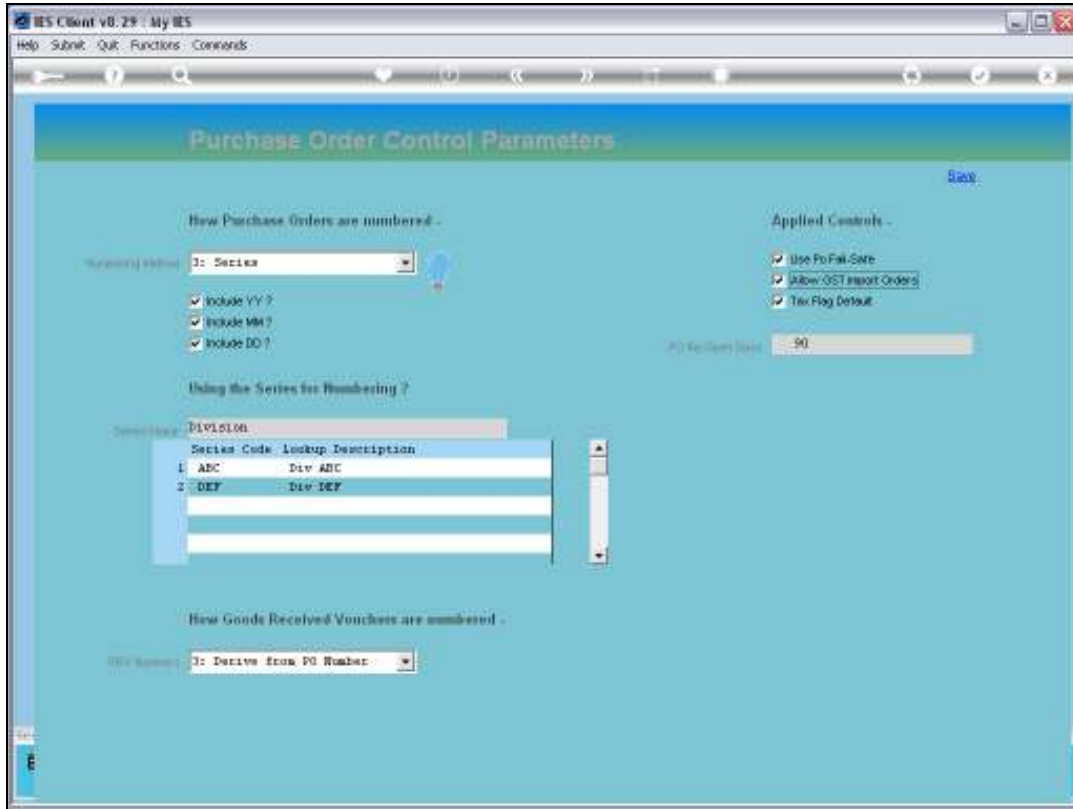


Slide 9
Slide notes:

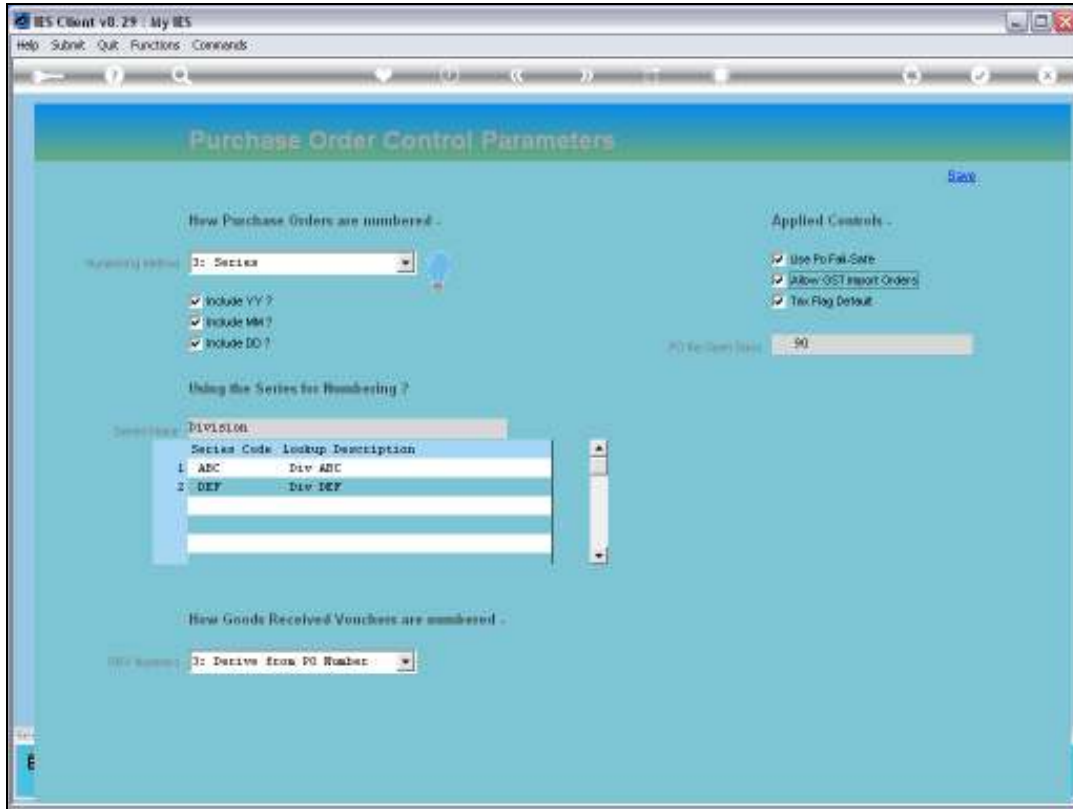


Slide 10

Slide notes: Import GST Orders are unusual, and this option is usually off. However, in a system where it is necessary to process Orders with a GST Import Tax, which is different from local VAT type Tax, we will have it on.

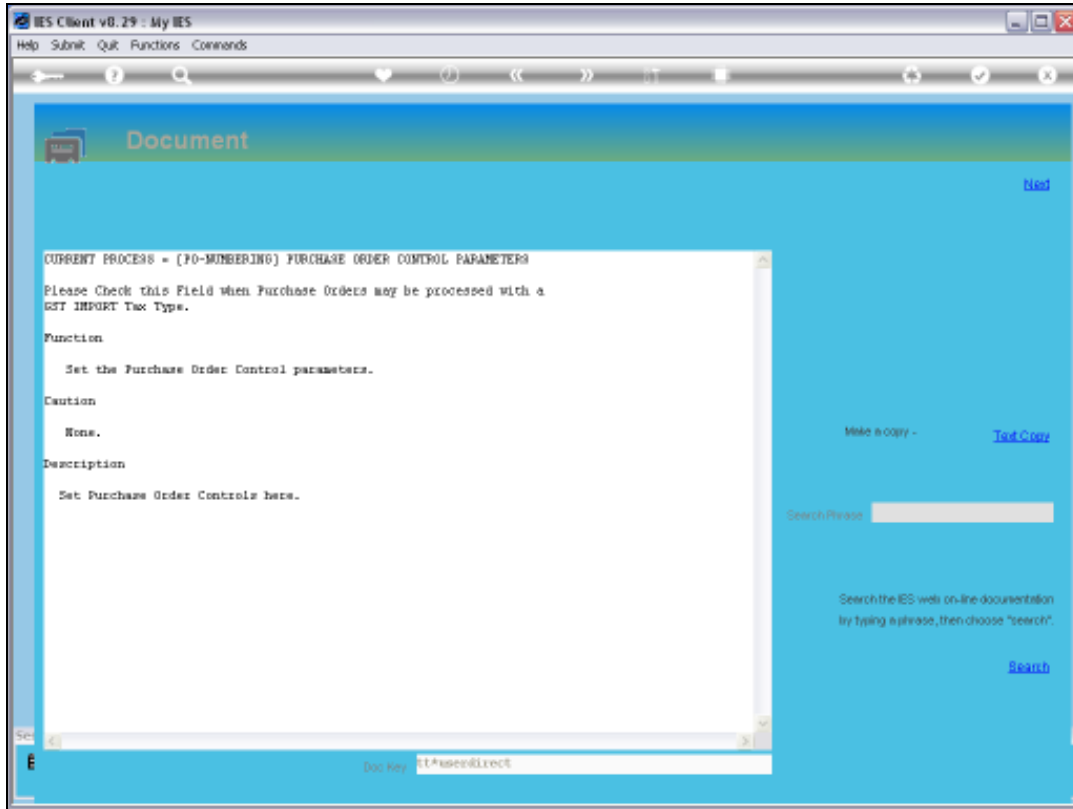


Slide 11
Slide notes:

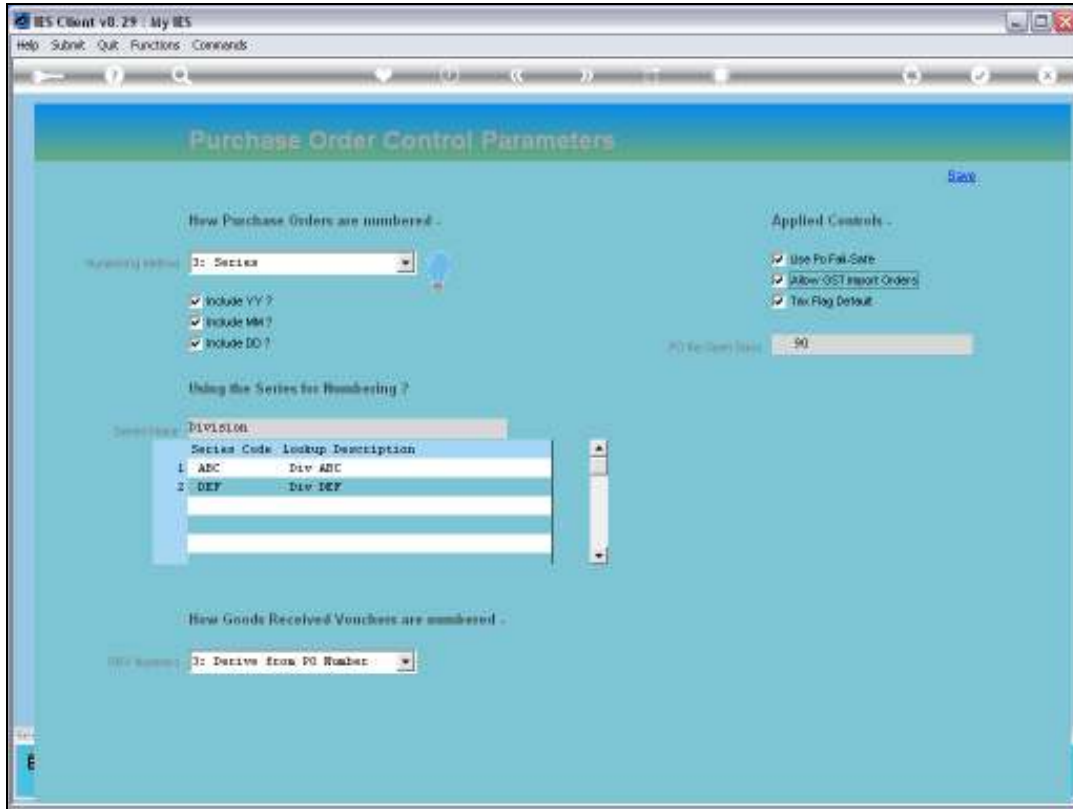


Slide 12

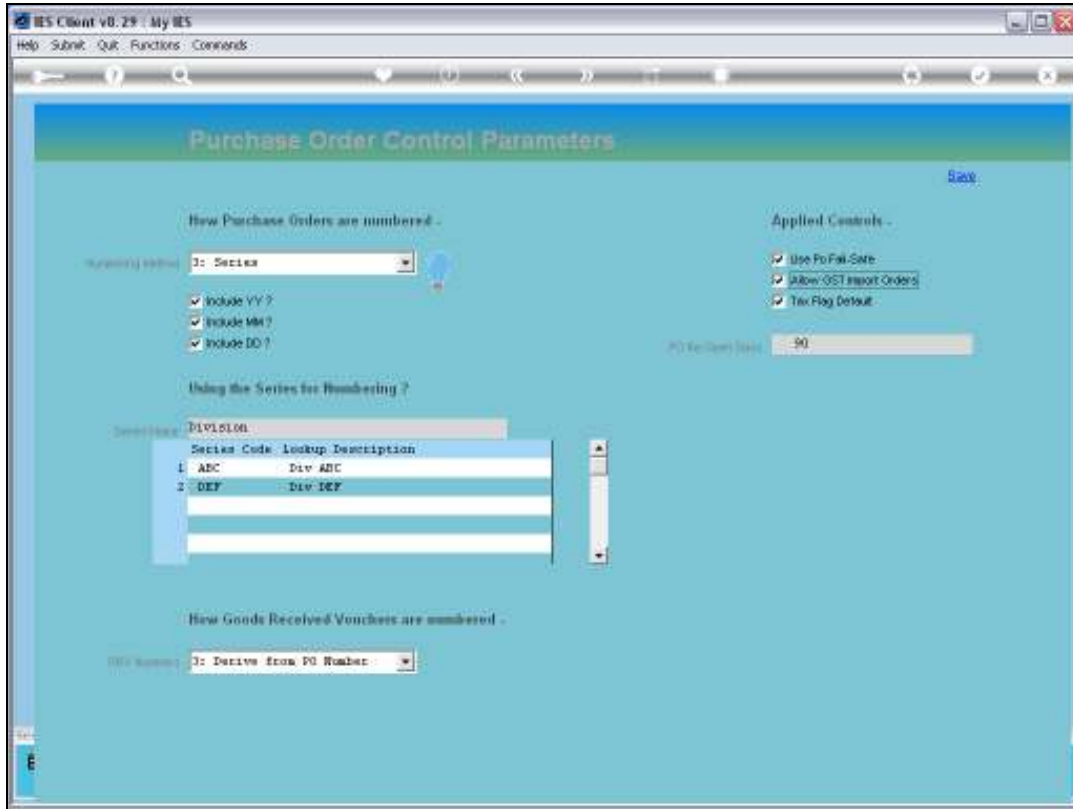
Slide notes:



Slide 13
Slide notes:

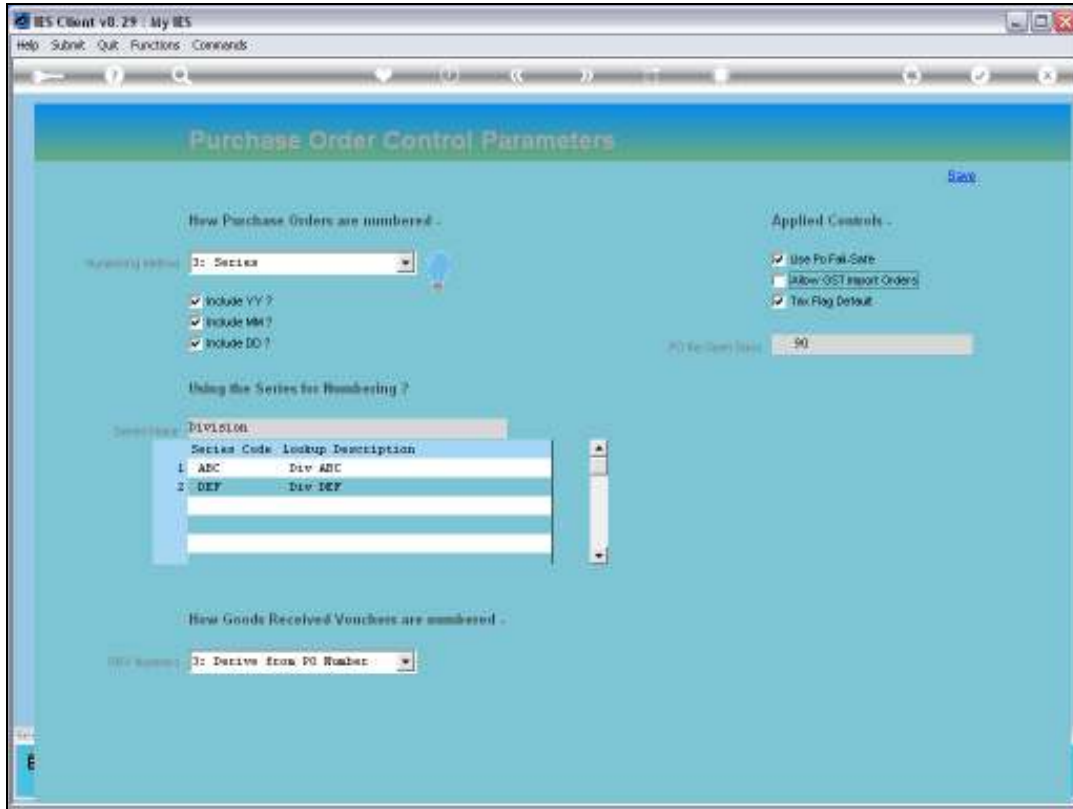


Slide 14
Slide notes:



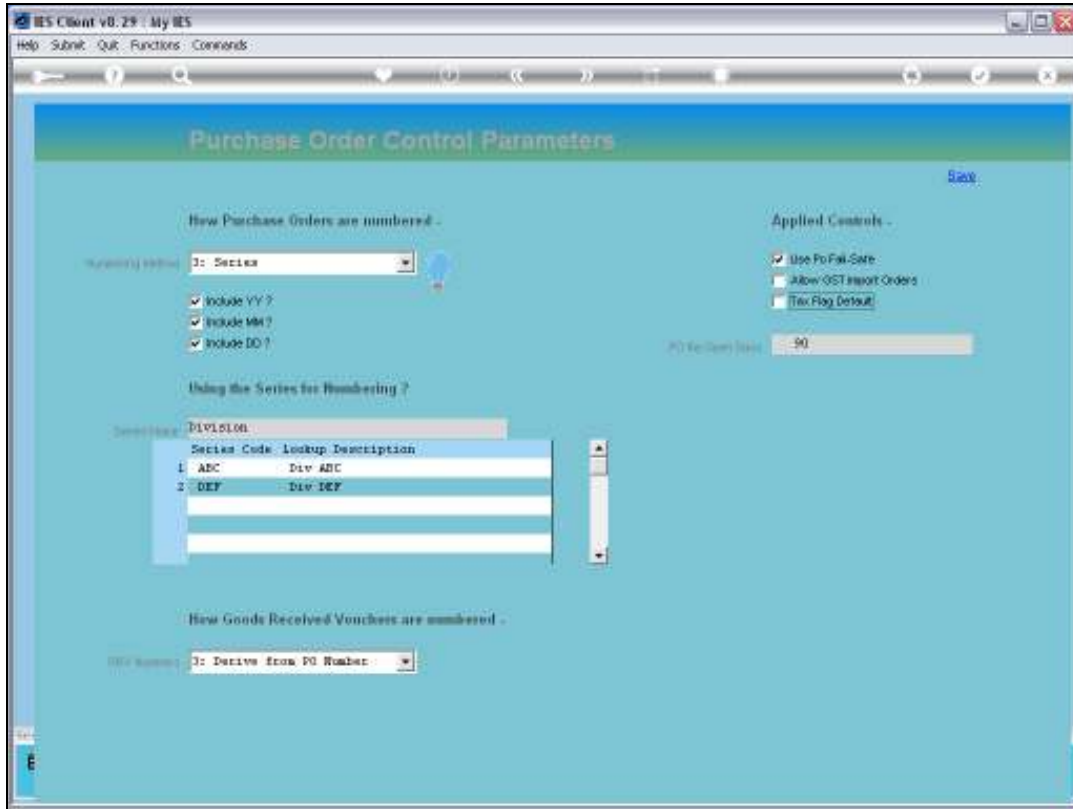
Slide 15

Slide notes:



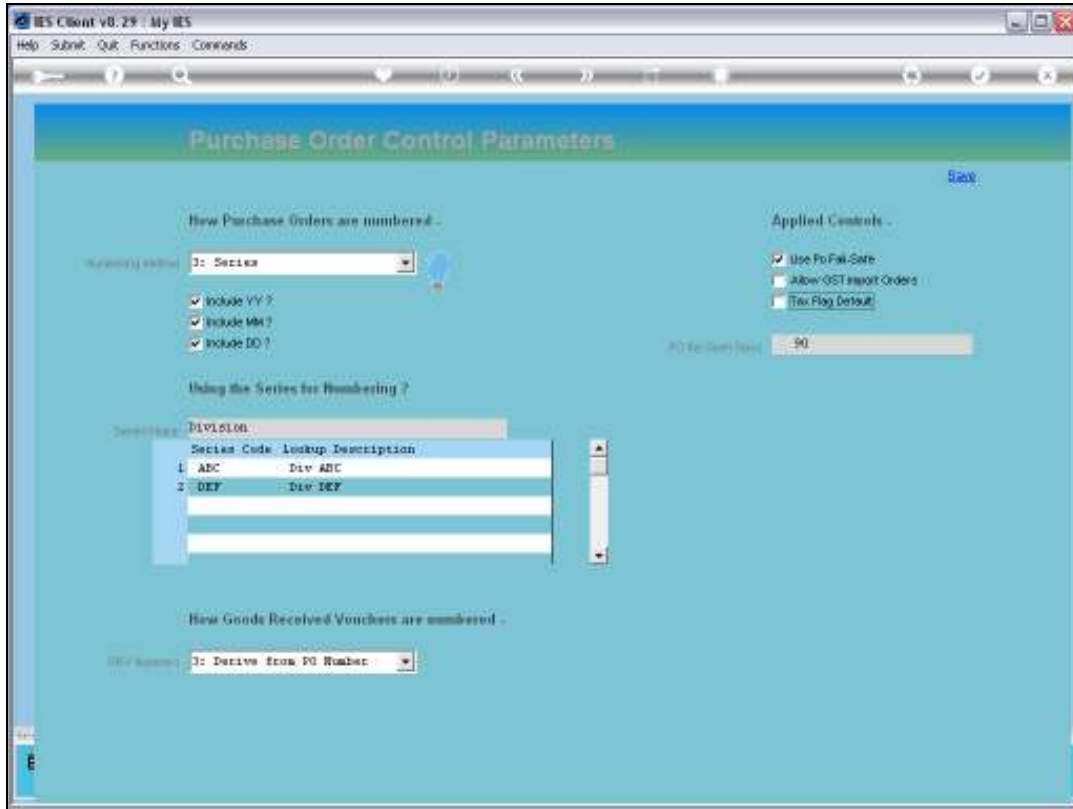
Slide 16

Slide notes: The Tax Flag default for Direct Items is usually on, but we can switch it off if we want the Operator to be forced to choose whether Input Tax will be claimed on a Direct Item or not.

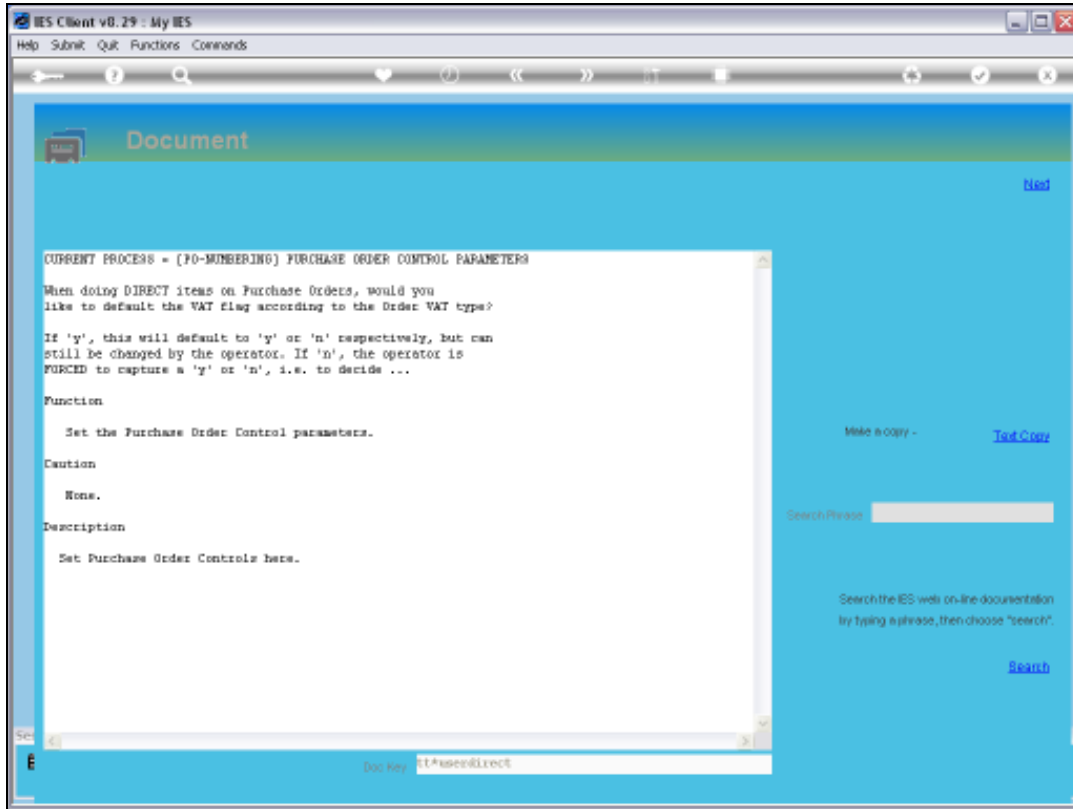


Slide 17

Slide notes:

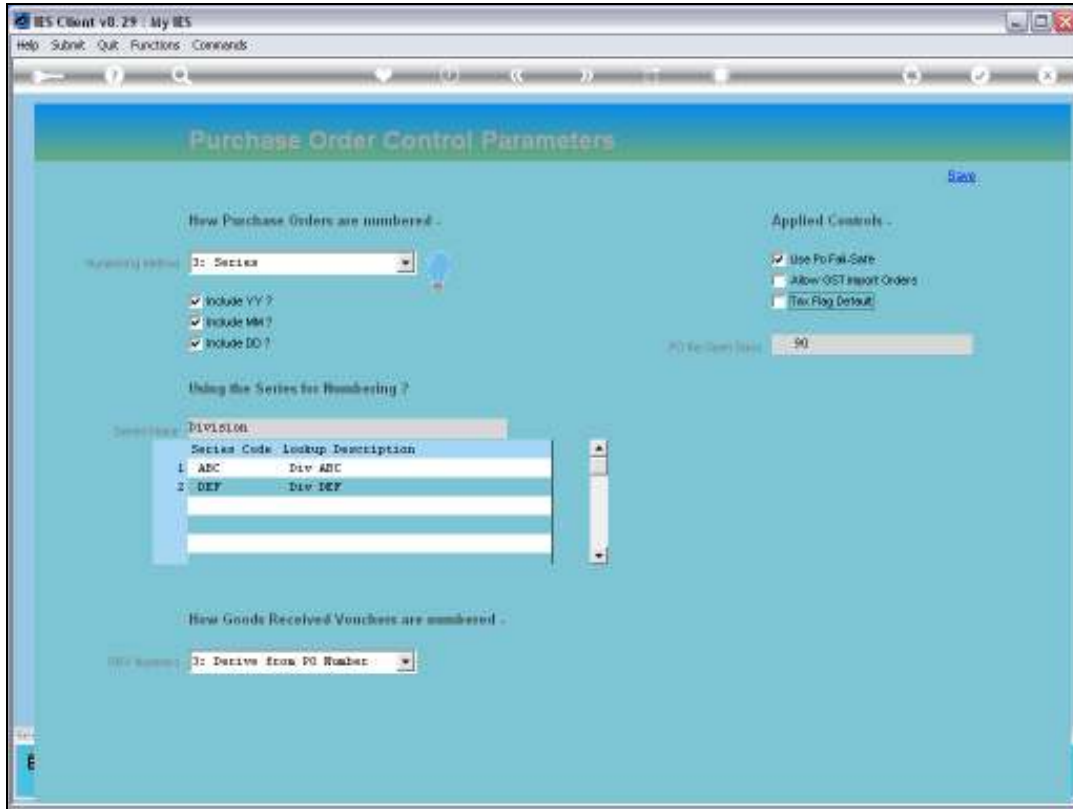


Slide 18
Slide notes:



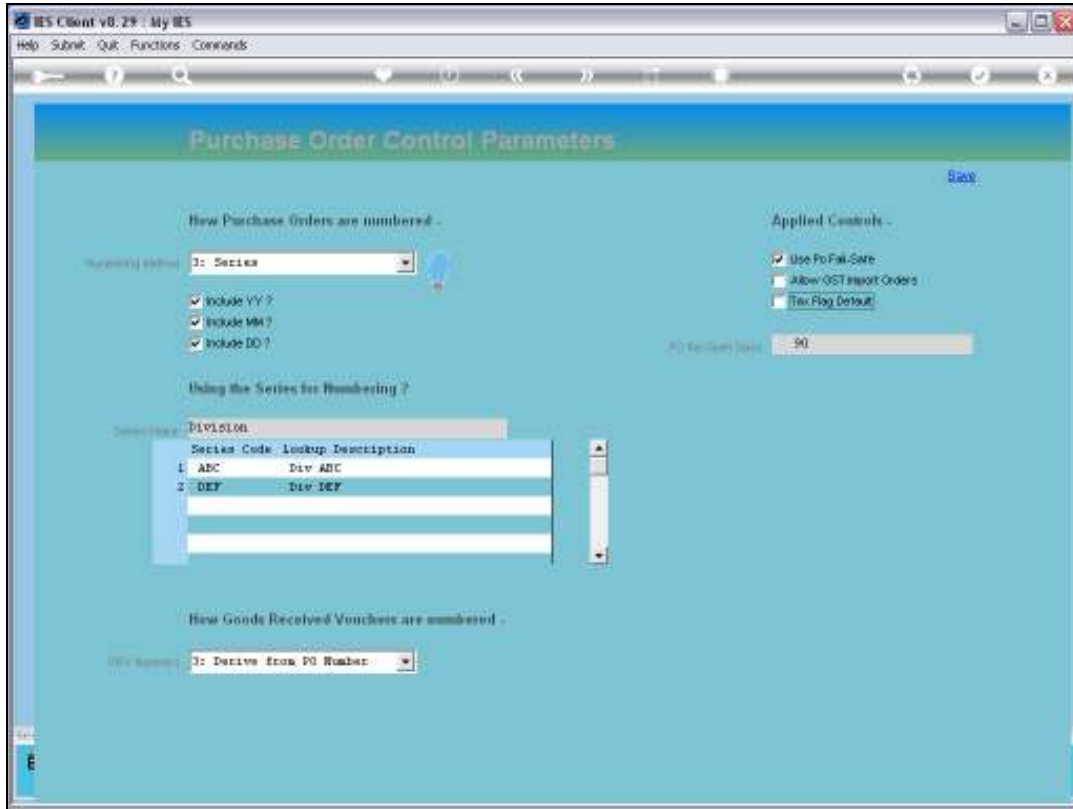
Slide 19

Slide notes: Here is the Help.

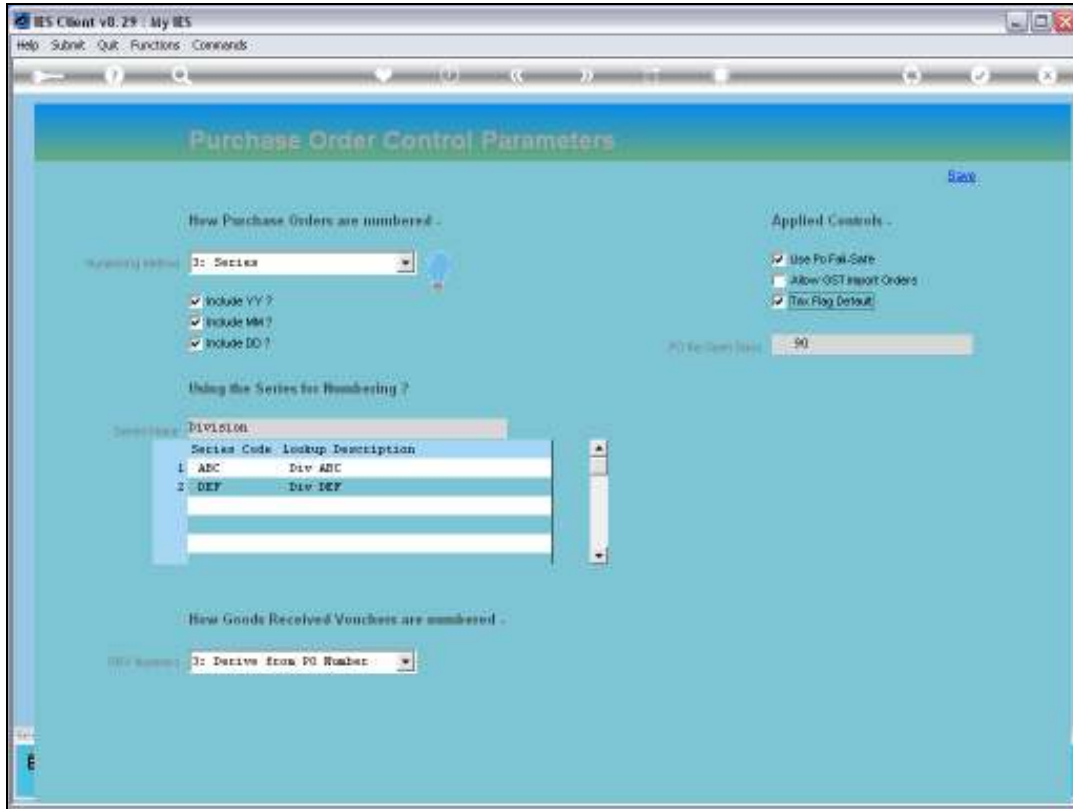


Slide 20

Slide notes:

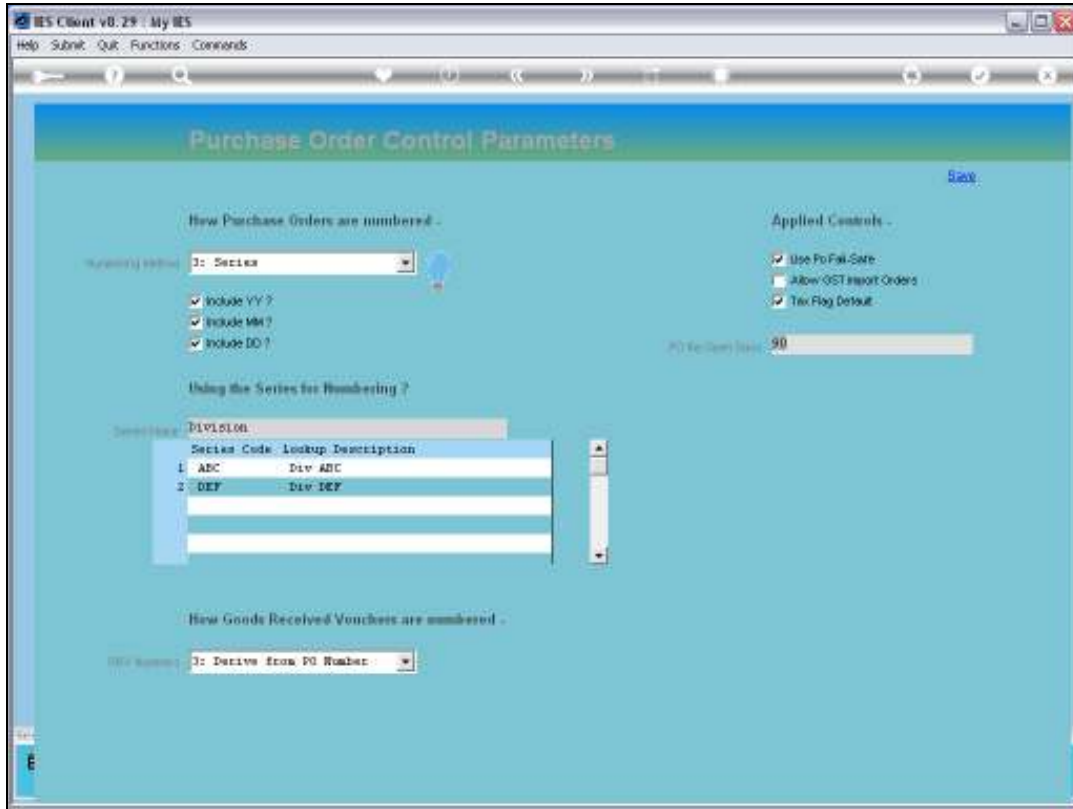


Slide 21
Slide notes:



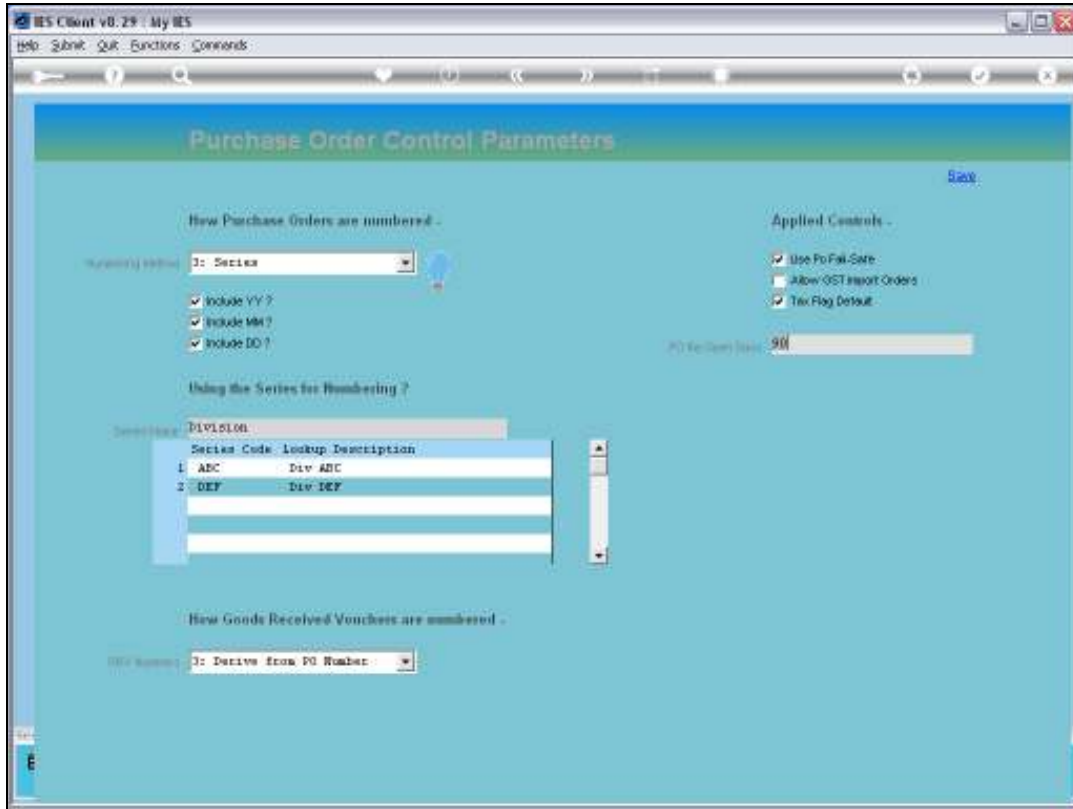
Slide 22

Slide notes:



Slide 23

Slide notes: The Re-open setting determines the interval of days after which a Closed Purchase Order may be re-opened for additional processing.



Slide 24

Slide notes: