



Slide 1

Slide notes: Changing the price of an Item is possible. A higher price may always be allowed, but a lower price will be subject to our Profiles, and may not be allowed. To change the price of the last Item, we choose 'Change Last Price'.



Slide 2

Slide notes: As a 1st example, we will attempt a price that will not be allowed, because we will go lower than the current User profile allows.



Slide 3

Slide notes: This price means we are attempting a discount of more than 35%, and the current User is allowed only 10%. In fact, if the allowed discount % is zero, which it is for most Cashiers, then we will not be able to lower the price at all, and may have to call a Supervisor. To call another User to authorize the discount, we will choose 'Authorize', while to put a new price, we may choose 'New Markdown Price'.



Slide 4

Slide notes: So now we will try just a small discount, within the currently allowed 10%.

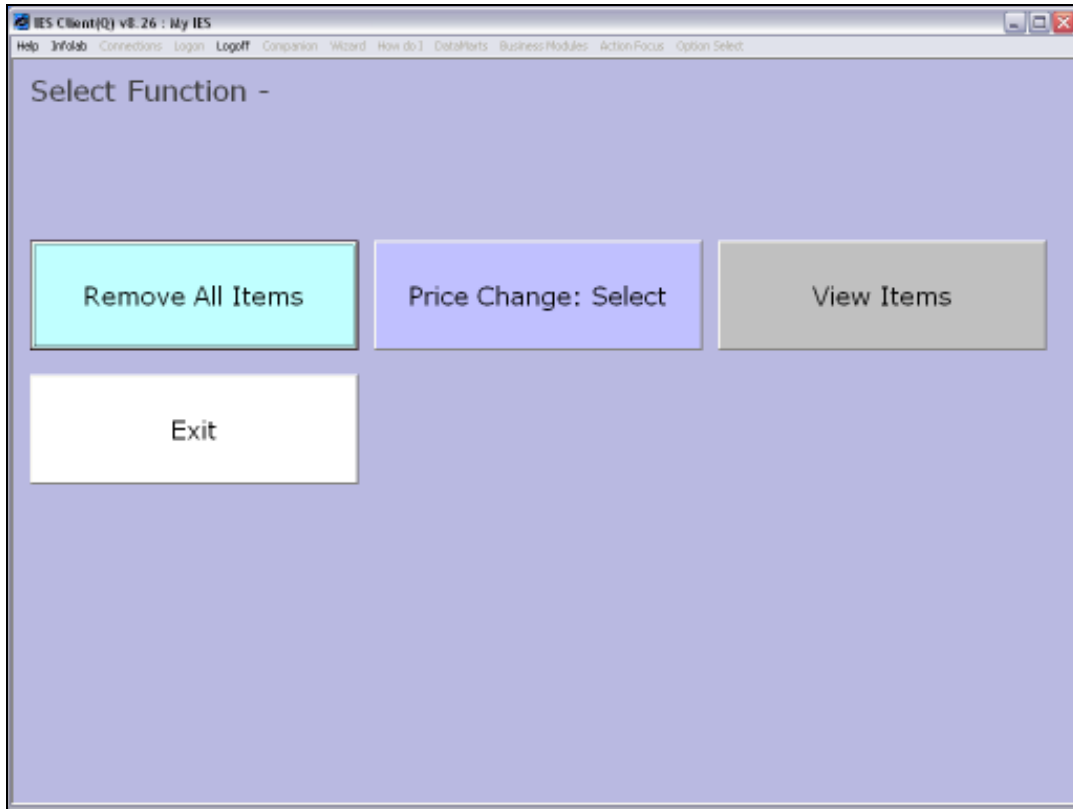


Slide 5
Slide notes:



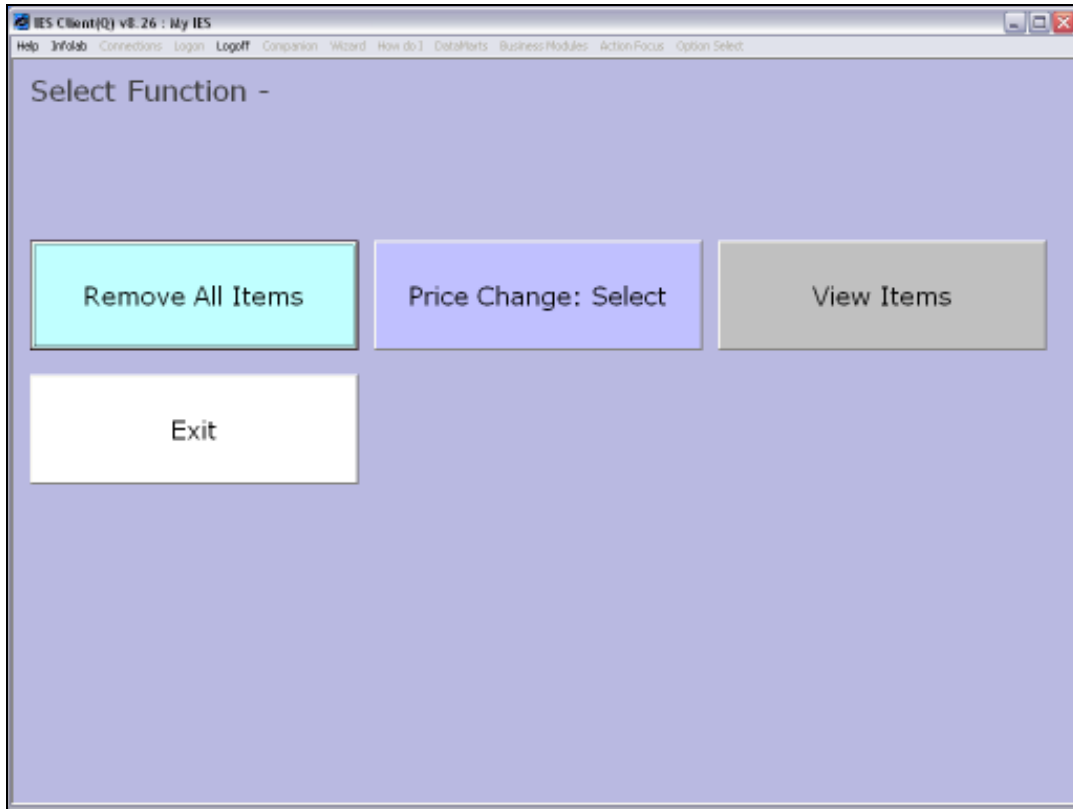
Slide 6

Slide notes: It has worked, and the new, lower price is shown. We can also perform a Price Change on any other Item on the list, by choosing Functions.

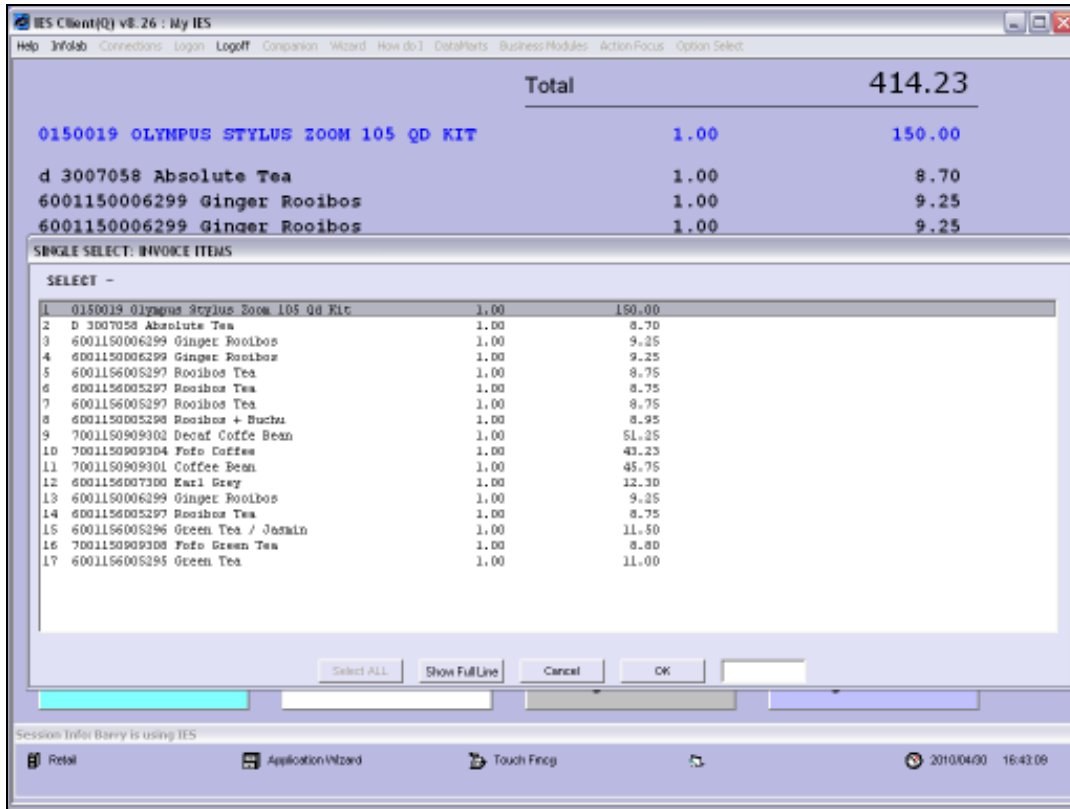


Slide 7

Slide notes: And then we choose 'Price Change: Select'.



Slide 8
Slide notes:



Slide 9

Slide notes: In this case, we can select the Item for which we want to change the Price.

The screenshot shows the IES Client v8.26 interface. At the top, the title bar reads "IES Client(Q) v8.26 : My IES". Below the title bar is a menu bar with options: Help, InfoTab, Connections, Login, Logout, Companion, Wizard, How do I..., DataParts, Business Modules, ActionFocus, Option Select.

The main display area shows a summary of the invoice:

Total		414.23
0150019 OLYMPUS STYLUS ZOOM 105 QD KIT	1.00	150.00
d 3007058 Absolute Tea	1.00	8.70
6001150006299 Ginger Rooibos	1.00	9.25
6001150006299 Ginger Rooibos	1.00	9.25

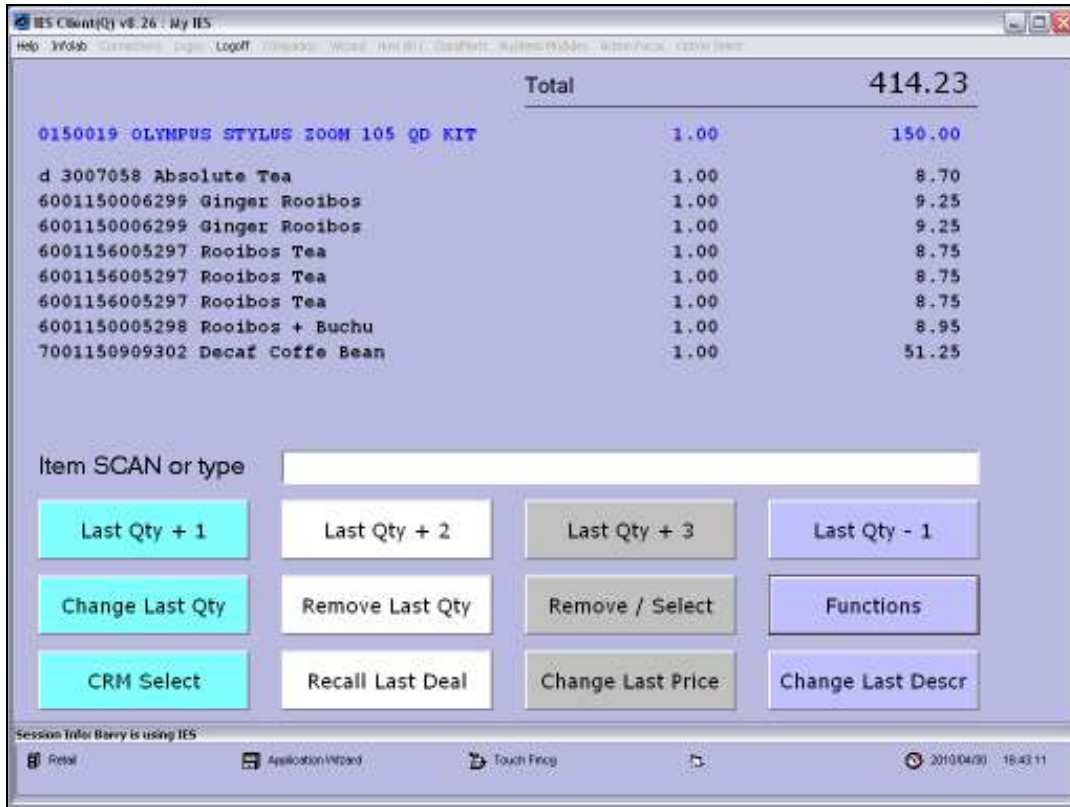
Below the summary is a window titled "SINGLE SELECT: INVOICE ITEMS". It contains a list of items with columns for item number, description, quantity, and price:

SELECT -			
1	0150019 Olympus Stylus Zoom 105 Qd Kit	1.00	150.00
2	D 3007058 Absolute Tea	1.00	8.70
3	6001150006299 Ginger Rooibos	1.00	9.25
4	6001150006299 Ginger Rooibos	1.00	9.25
5	6001156005297 Rooibos Tea	1.00	8.75
6	6001156005297 Rooibos Tea	1.00	8.75
7	6001156005297 Rooibos Tea	1.00	8.75
8	6001150005298 Rooibos + Nuzhu	1.00	8.95
9	7001150909302 Decaf Coffe Bean	1.00	51.25
10	7001150909304 Foto Coffee	1.00	43.23
11	7001150909301 Coffee Bean	1.00	45.75
12	6001156007300 Earl Grey	1.00	12.30
13	6001150006299 Ginger Rooibos	1.00	9.25
14	6001156005297 Rooibos Tea	1.00	8.75
15	6001156005296 Green Tea / Jasmine	1.00	11.50
16	7001150909308 Foto Green Tea	1.00	8.80
17	6001156005295 Green Tea	1.00	11.00

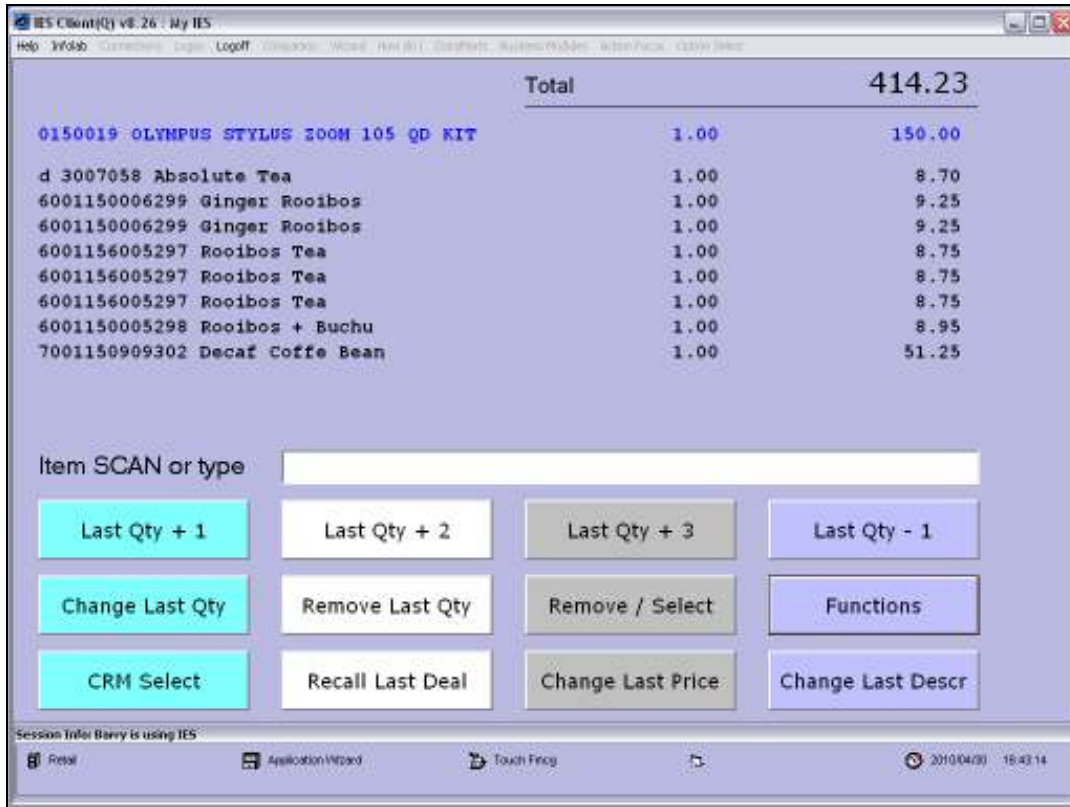
At the bottom of the window are buttons: Select ALL, Show Full Line, Cancel, and OK.

The status bar at the bottom of the application shows "Session Info: Barry is using IES" and a taskbar with icons for Retail, Application Wizard, Touch Fring, and a clock showing 2010/04/03 16:43:08.

Slide 10
Slide notes:



Slide 11
Slide notes:



Slide 12
Slide notes:



Slide 13
Slide notes:



Slide 14

Slide notes: So, we see that Price Changes are possible, but are subject to our Profiles and to what we are allowed to change, and we may call a Supervisor to assist if necessary.