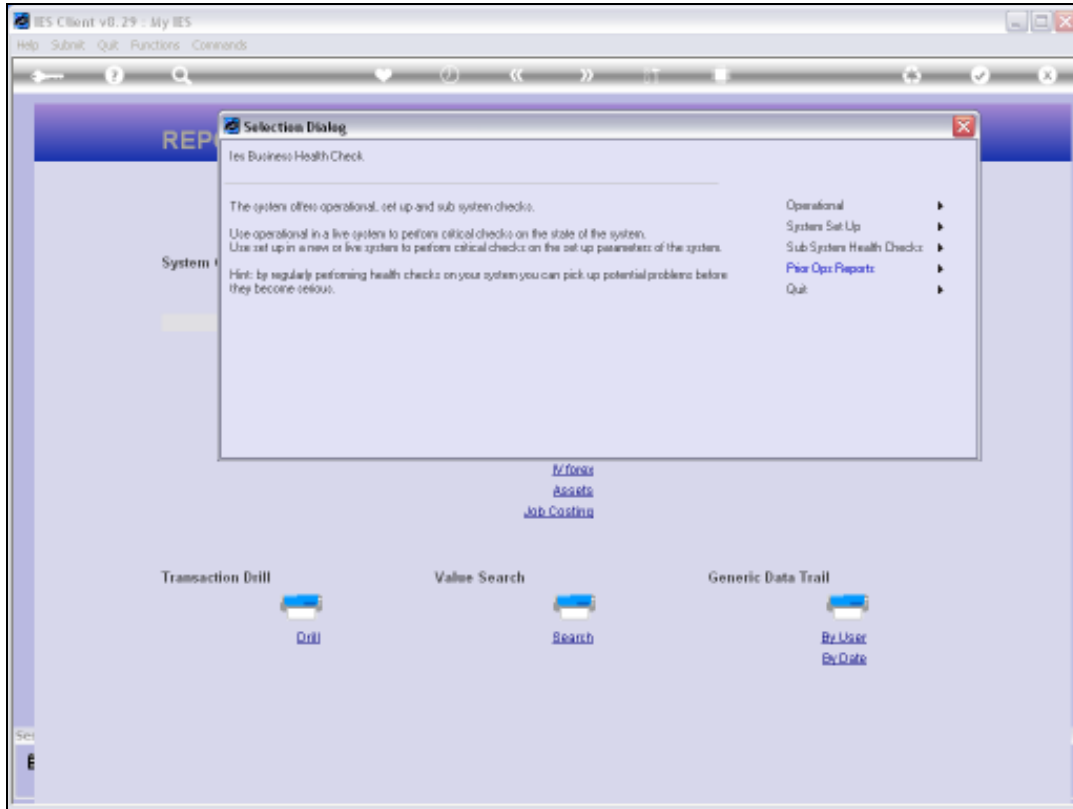
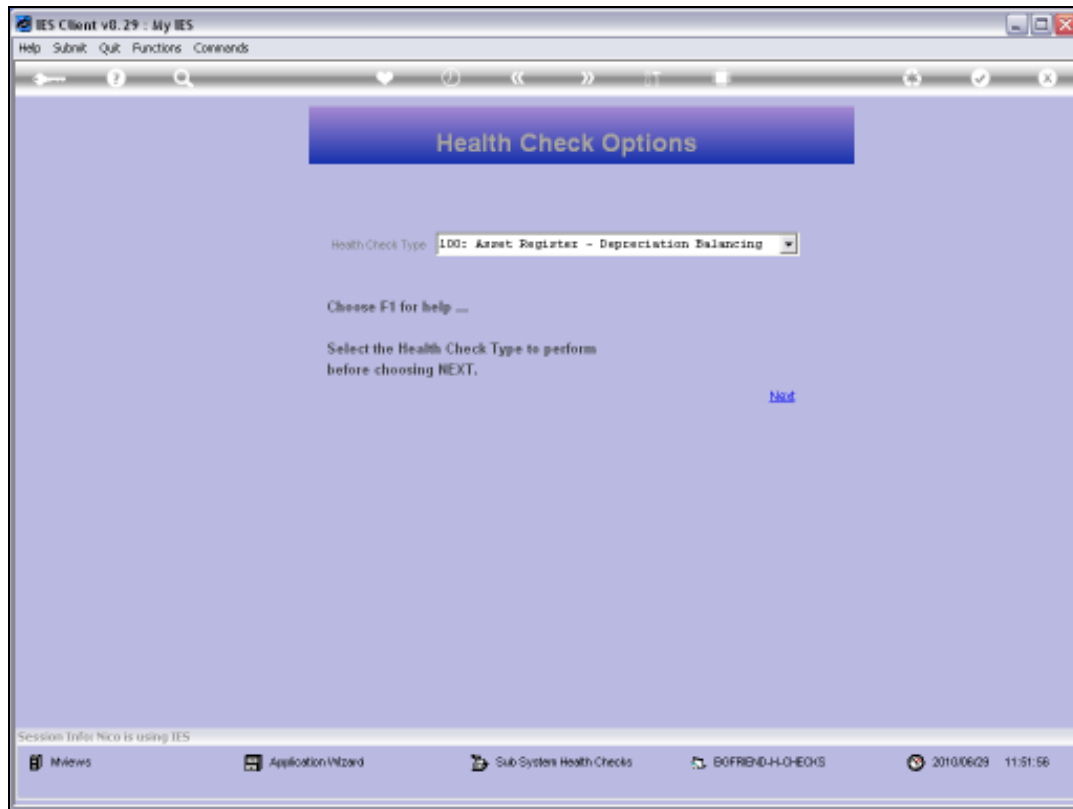


Slide 1

Slide notes: The Health Check wizard offers Sub System Health check options. Now we will check the Assets Depreciation integrity.

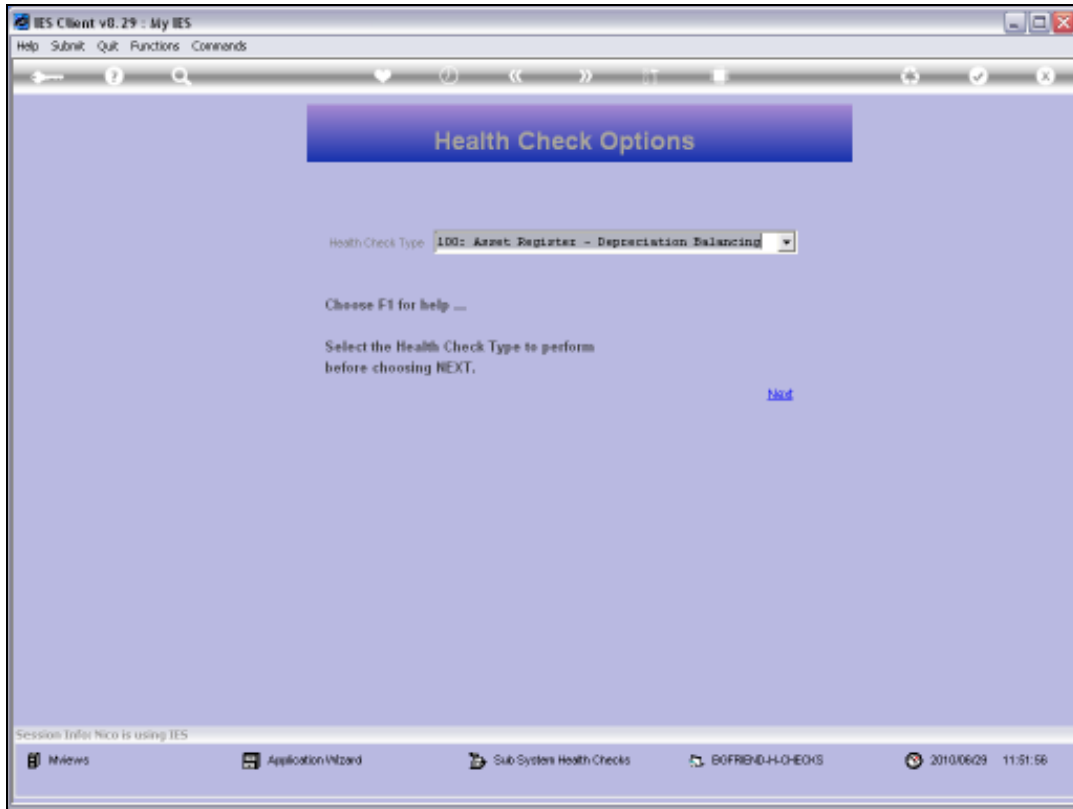


Slide 2
Slide notes:

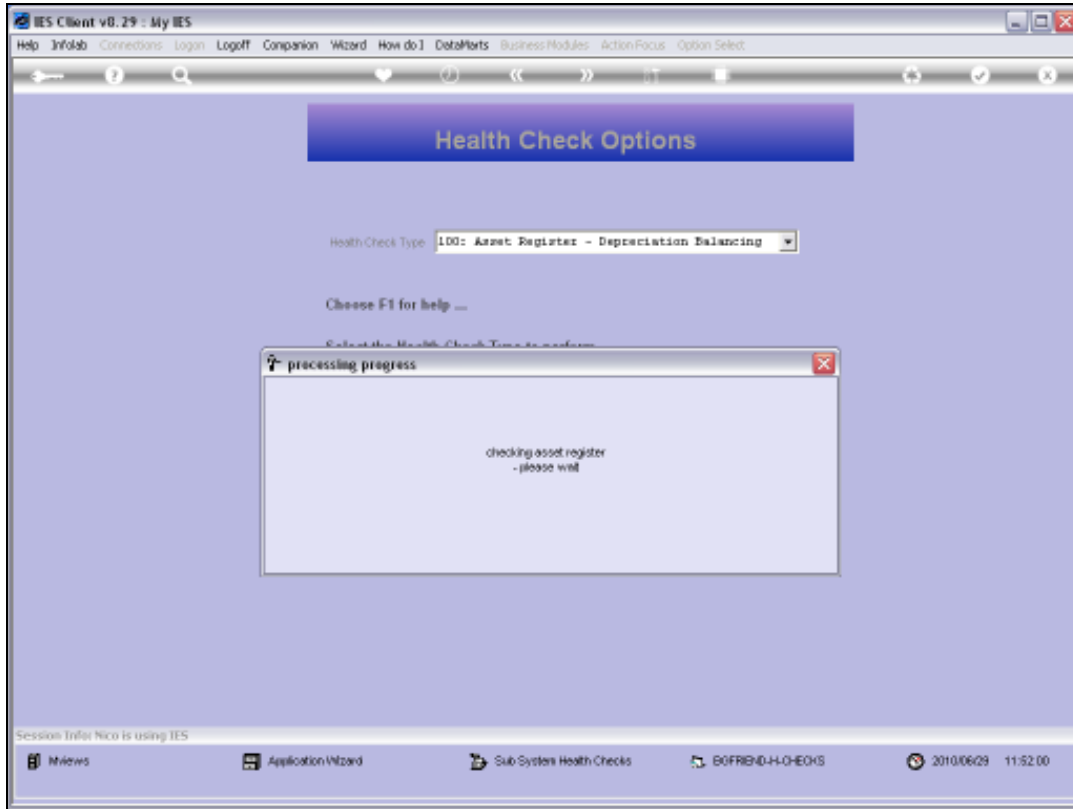


Slide 3

Slide notes: Option 100 will check the Depreciation records in the Fixed Asset Management system for any flaws.



Slide 4
Slide notes:

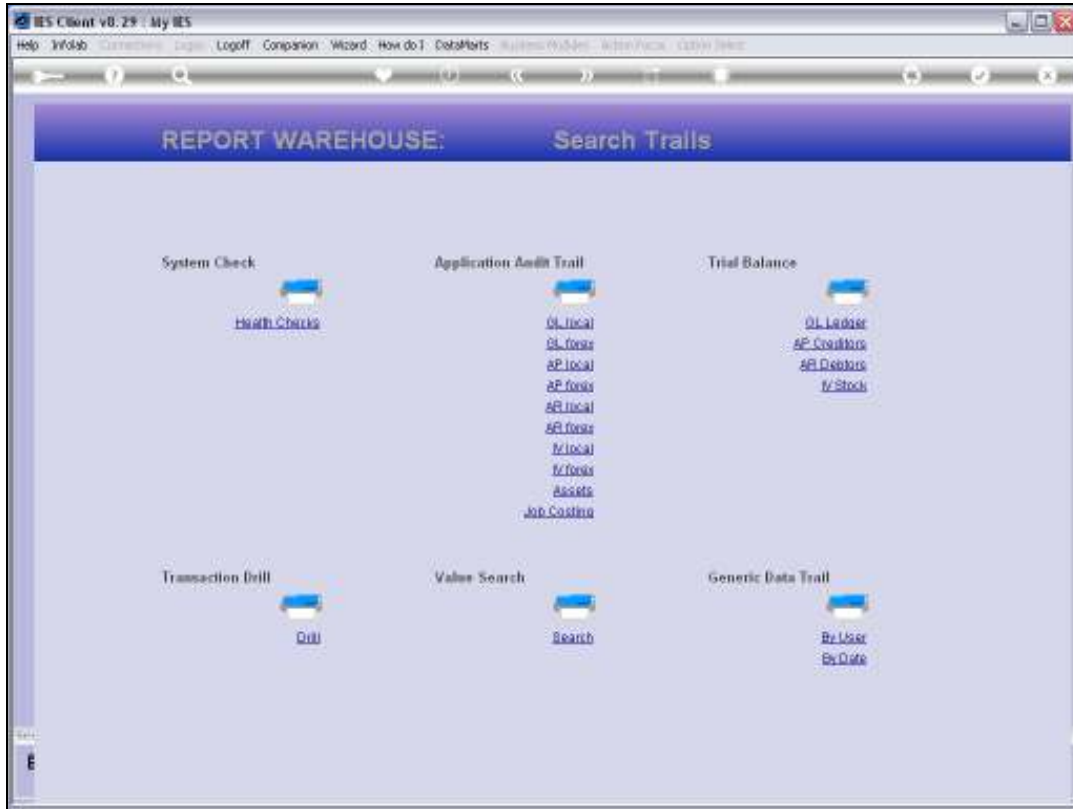


Slide 5
Slide notes:



Slide 6

Slide notes: This is what we want: A 'good health' message. We may use this check after a system incident or in any situation that leads us to suspect there may be a problem with the Fixed Assets.



Slide 8
Slide notes: