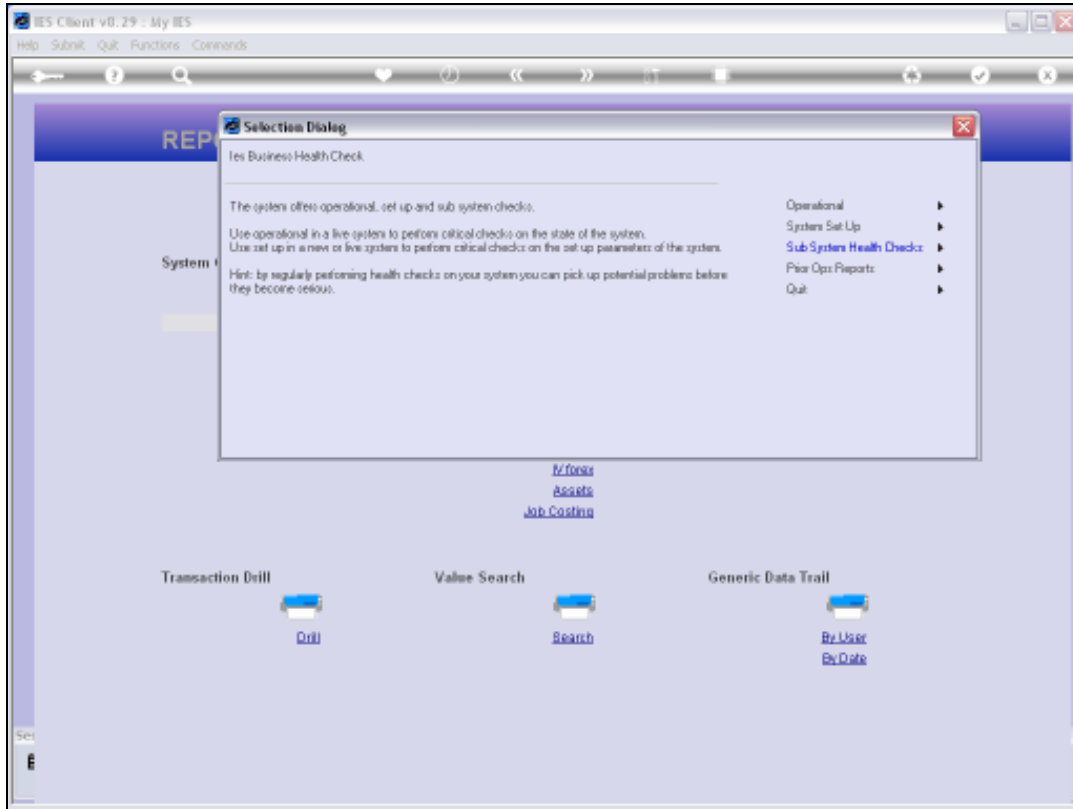
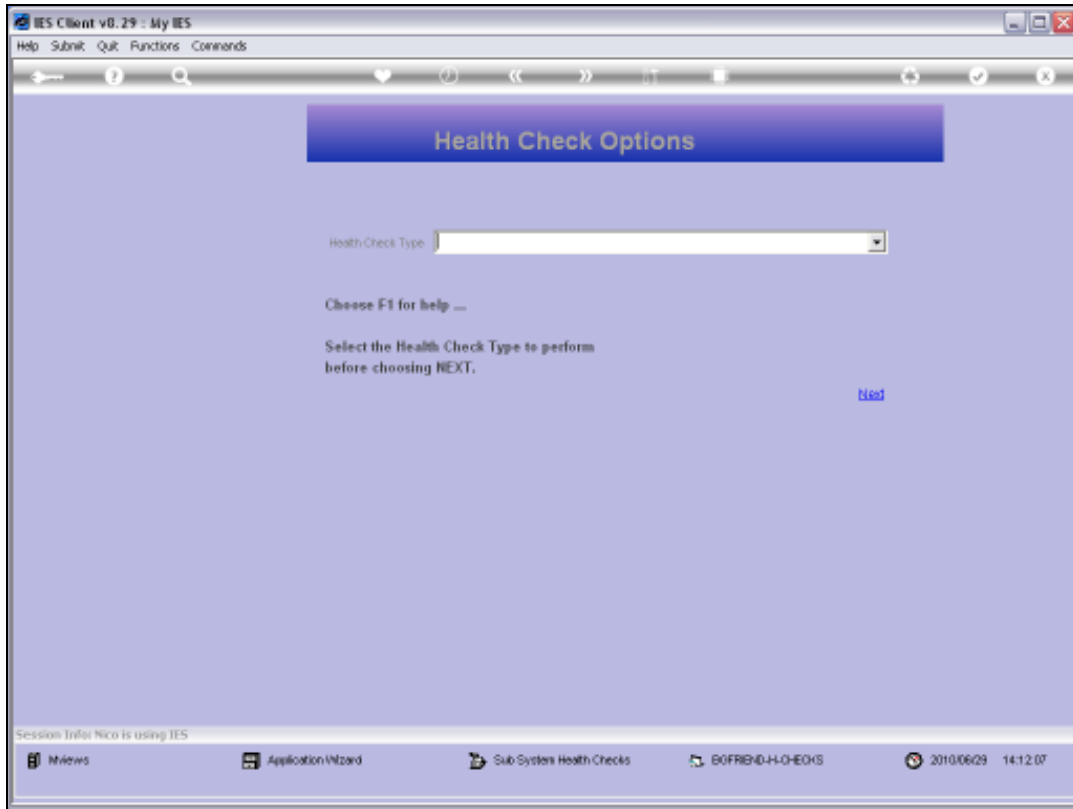


Slide 1

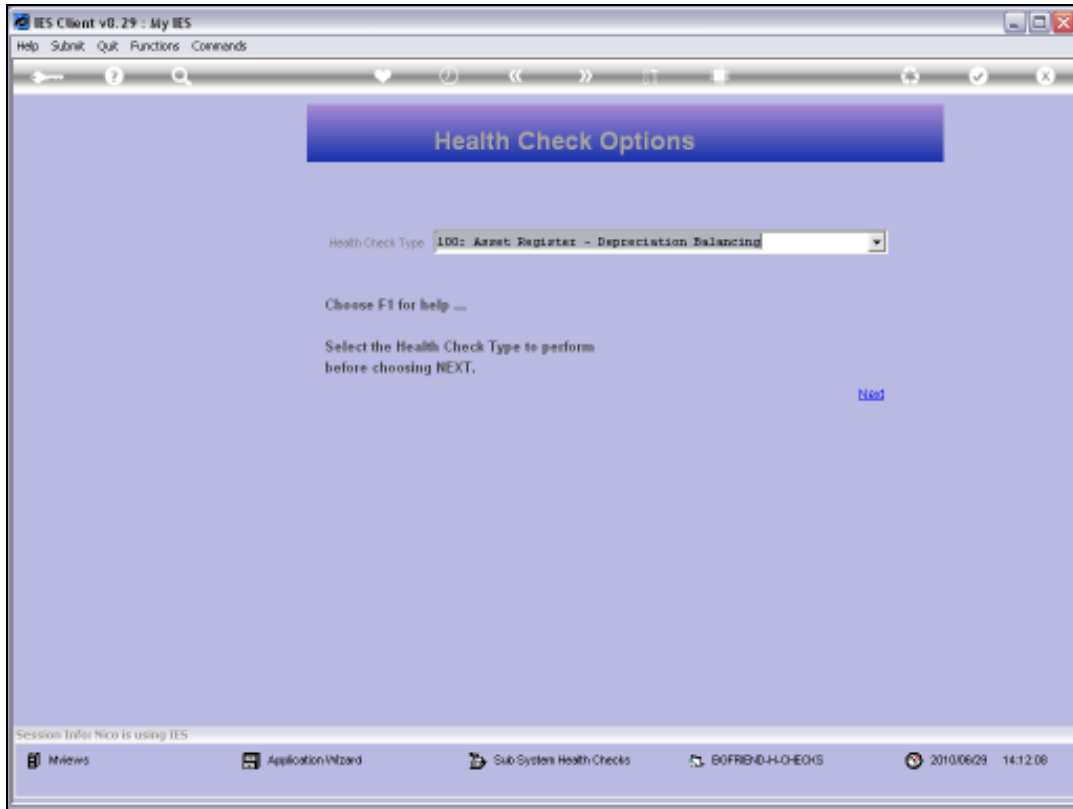
Slide notes: For AP Creditors Sub Ledger Balancing, we use the Sub System Health Checks 121 & 122.



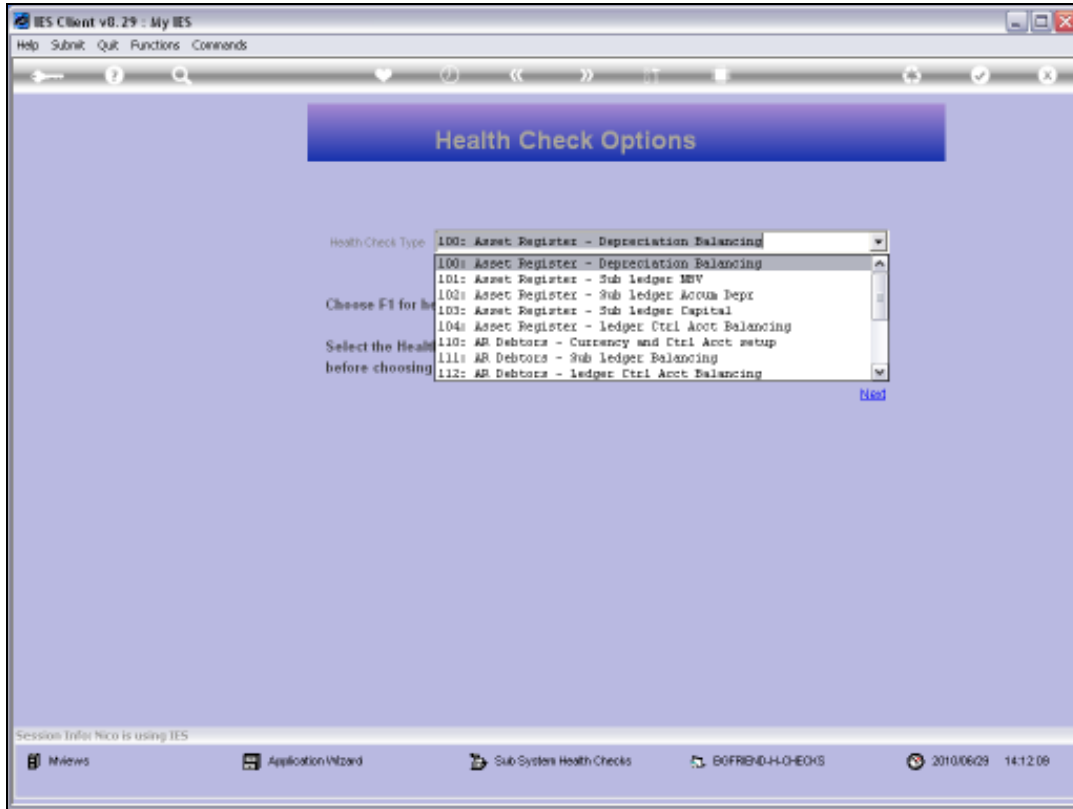
Slide 2
Slide notes:



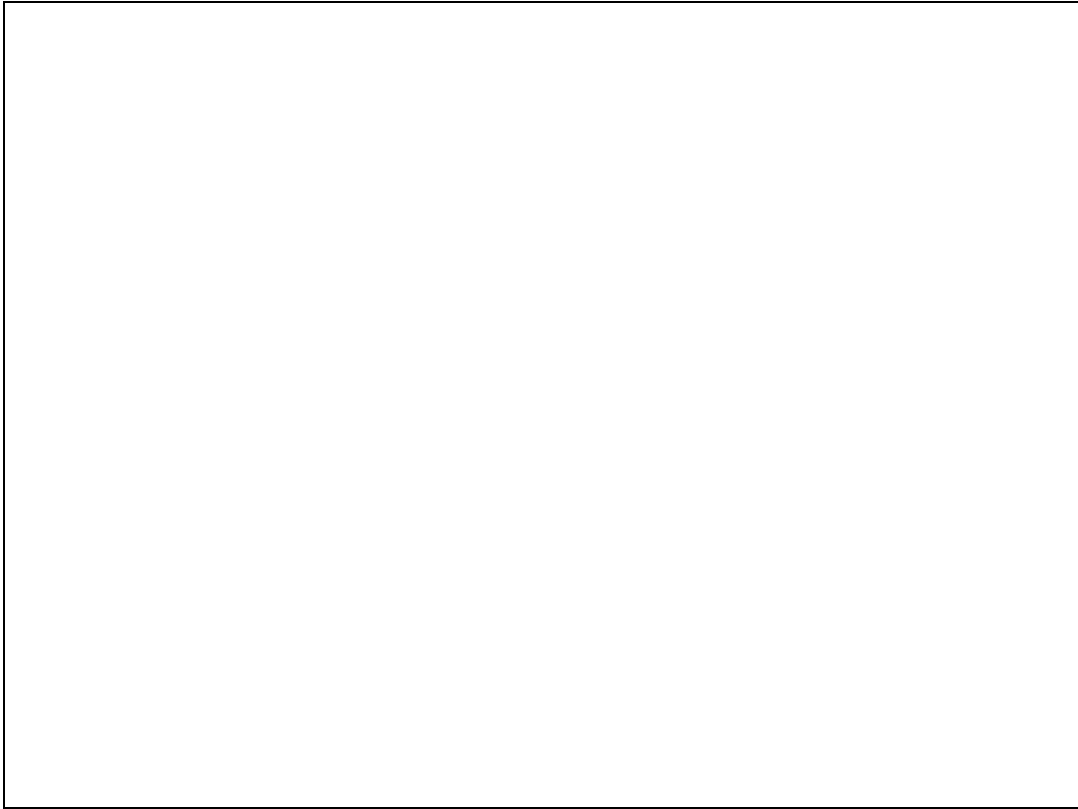
Slide 3
Slide notes:



Slide 4
Slide notes:

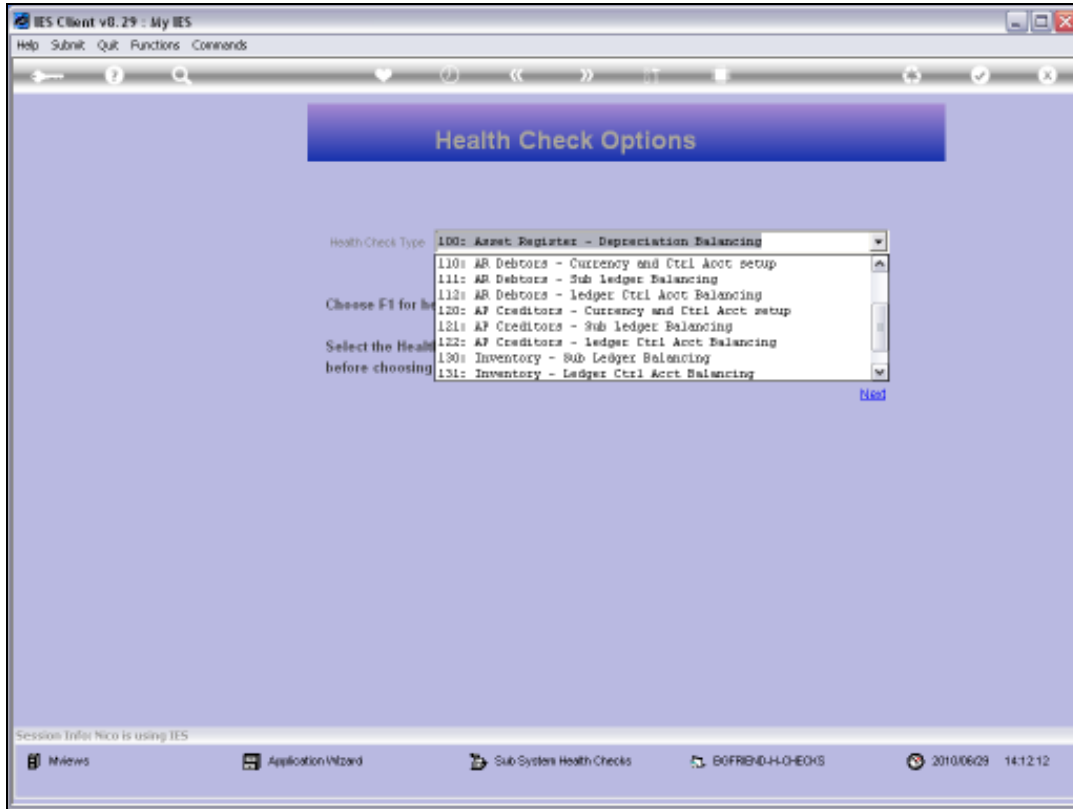


Slide 5
Slide notes:

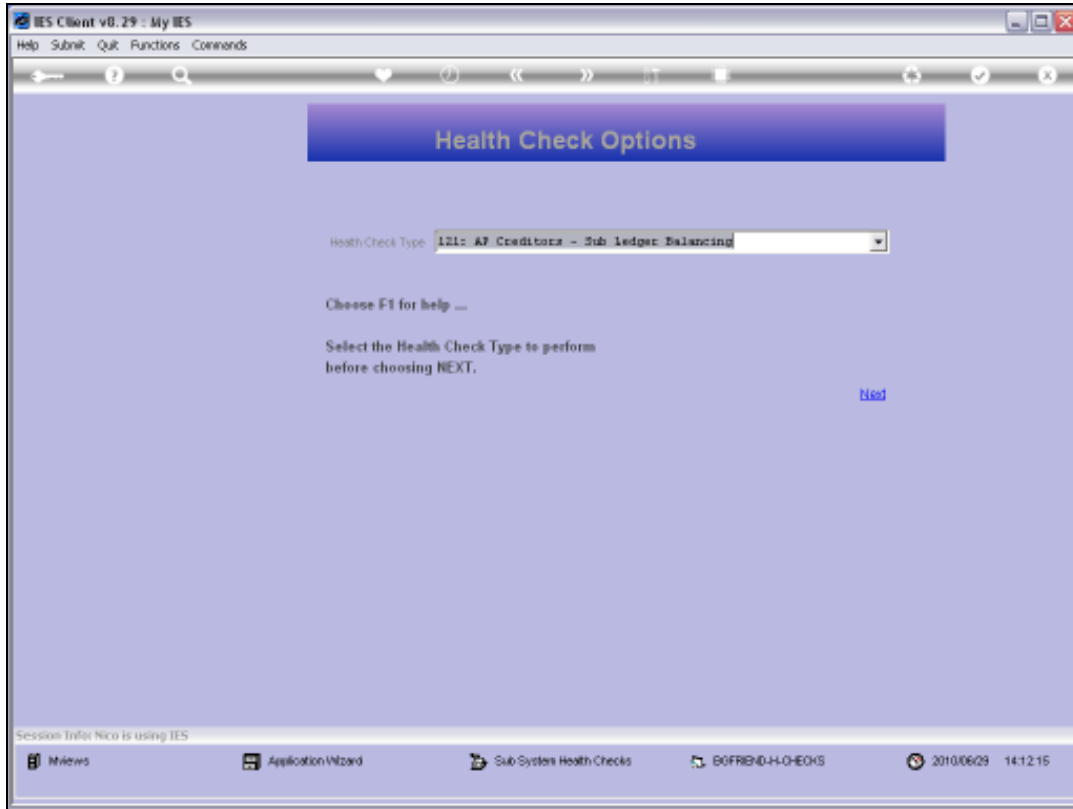


Slide 6

Slide notes:

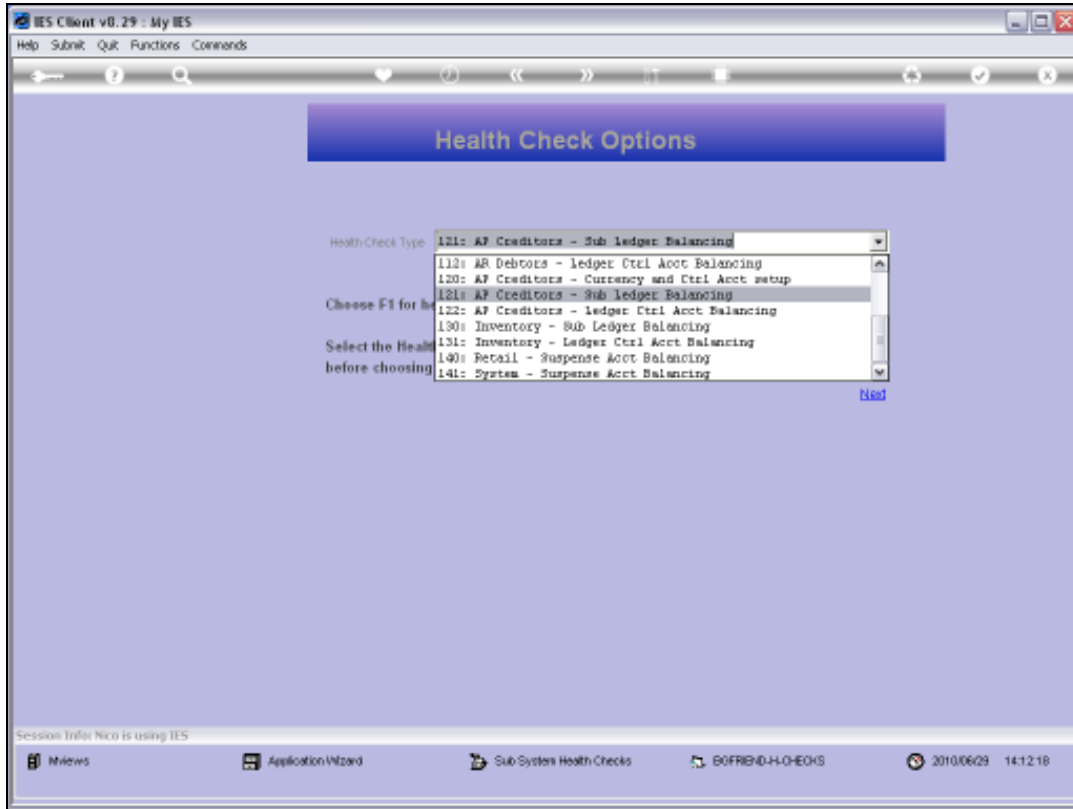


Slide 7
Slide notes:

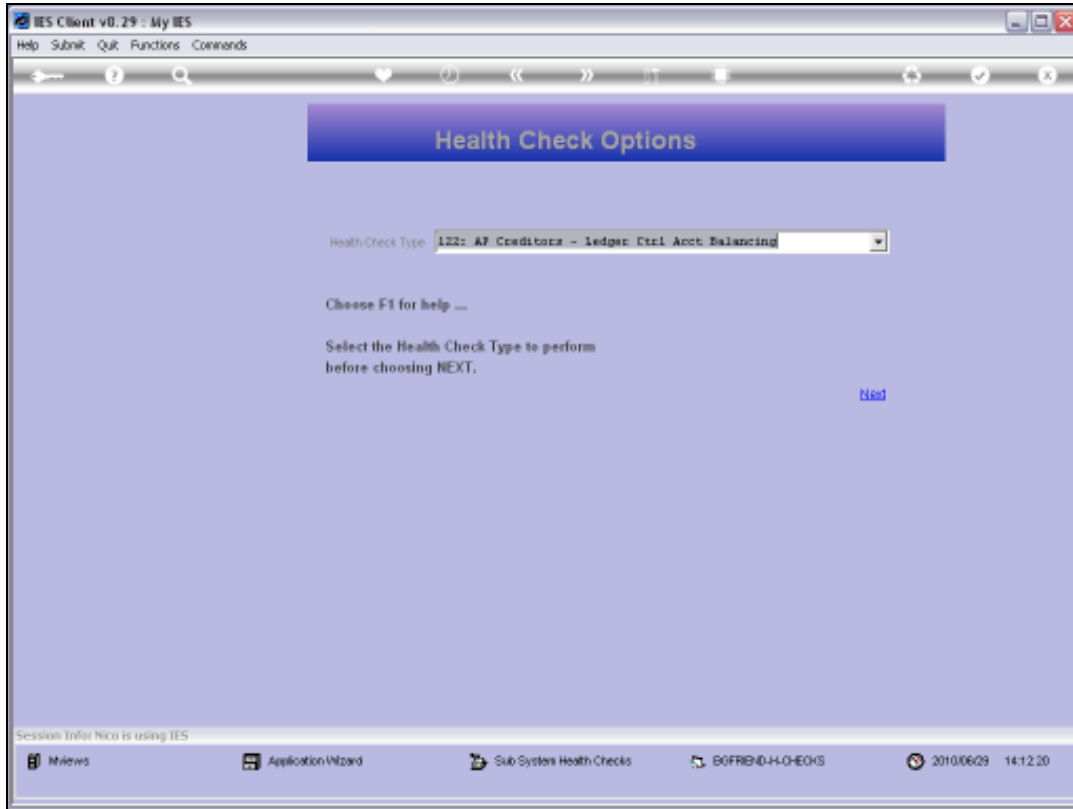


Slide 8

Slide notes: Check 121 will provide the totals from the AP Creditors Accounts in the Sub Ledger.

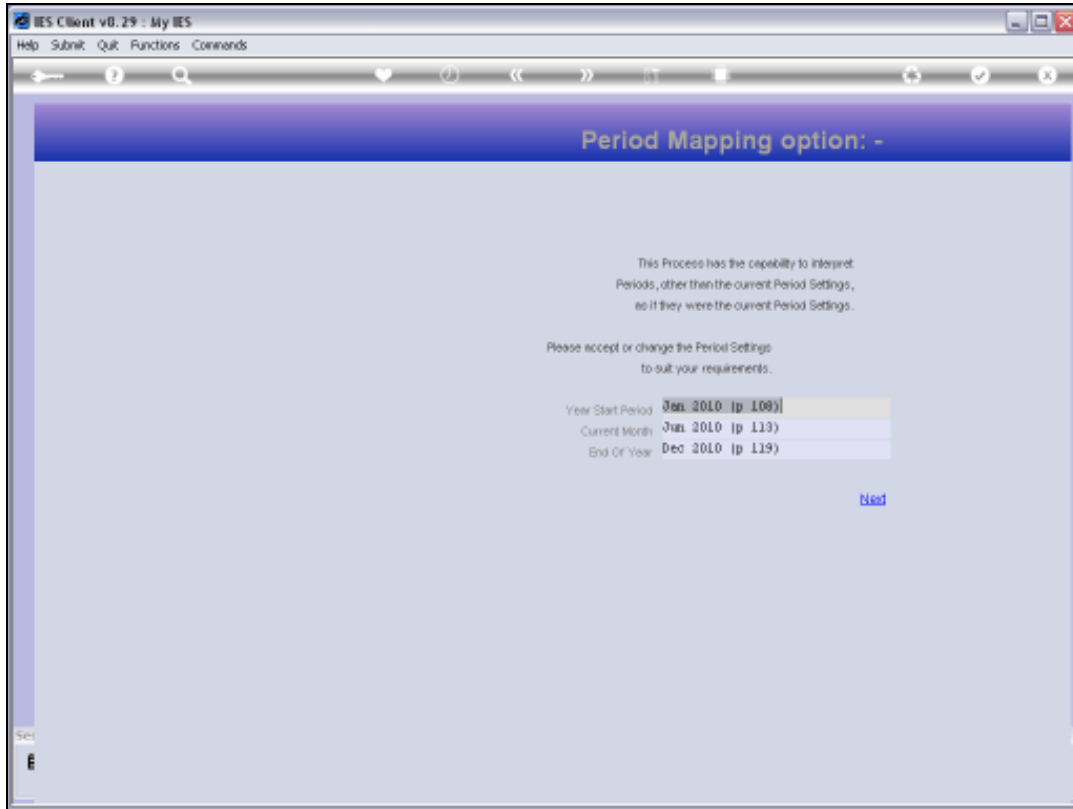


Slide 9
Slide notes:



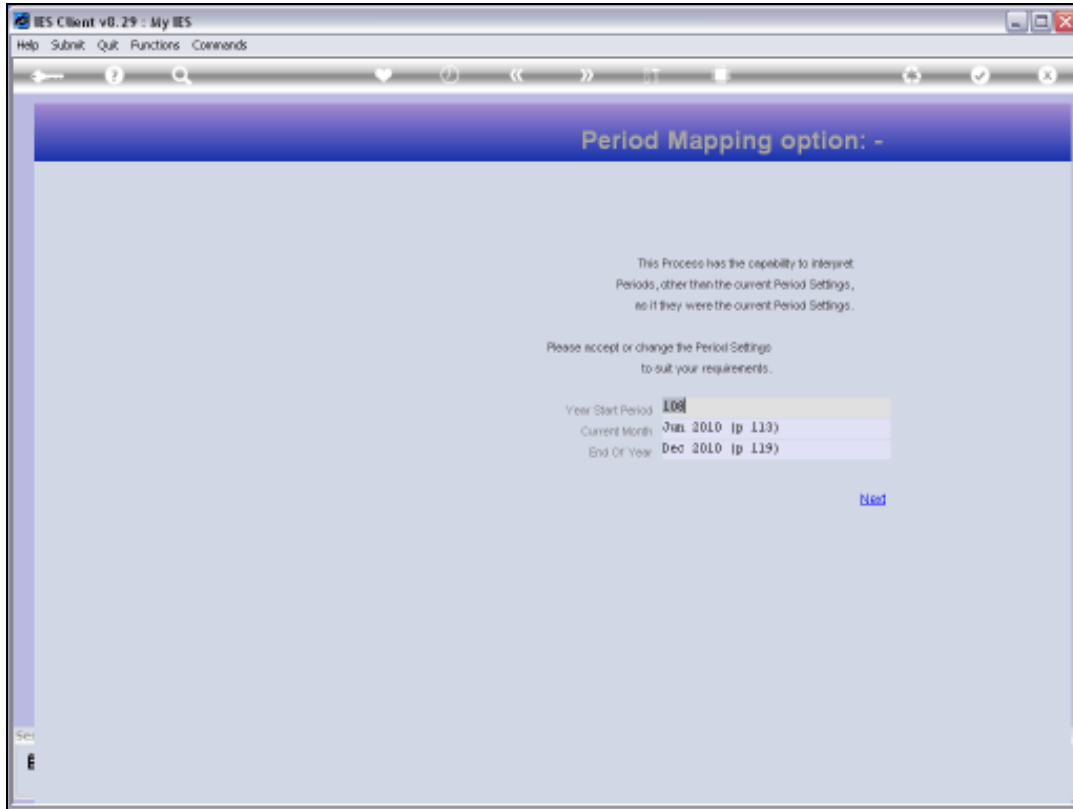
Slide 10

Slide notes: And check 122 will provide the totals from the Control Accounts in the General Ledger.



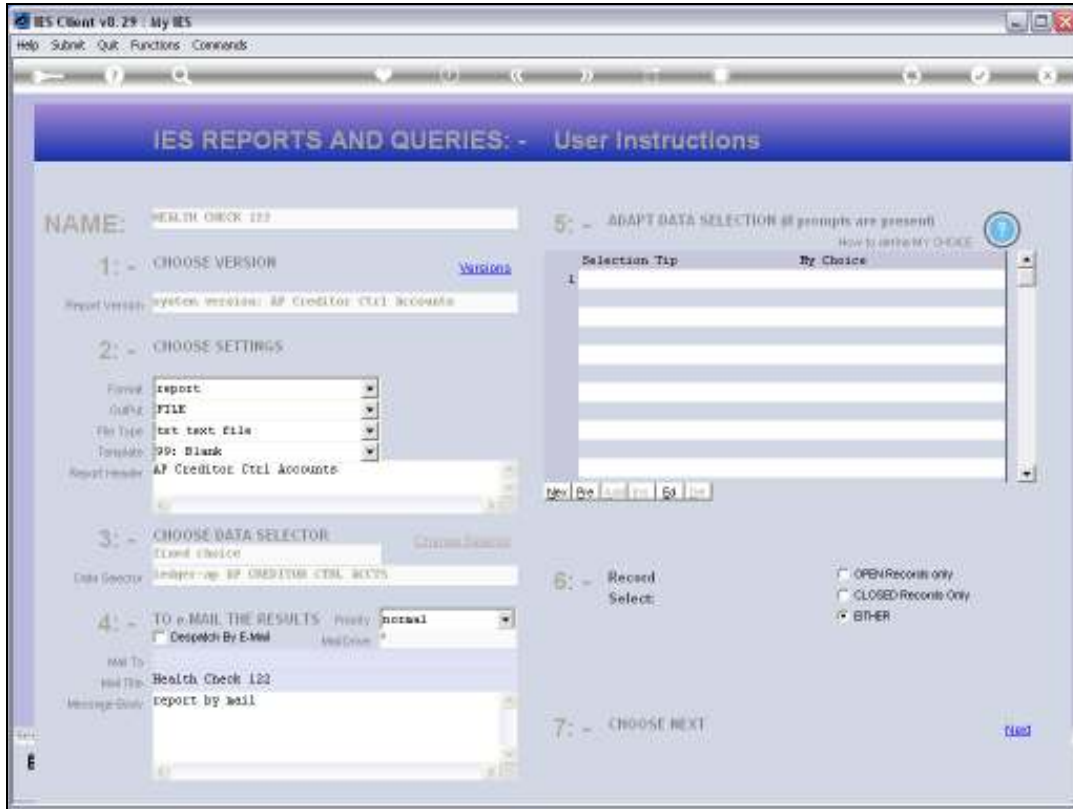
Slide 11

Slide notes: For each Report, we need to select the same Period settings.



Slide 12

Slide notes:



Slide 13
Slide notes:



Slide 14
Slide notes:

Q1552150879A.TXT - Notepad

File Edit Format View Help

Gumay Hoops Inc.

14:07:59 29 JUN 2010 page 1

AP Creditors Sub Ledger Jan 2010 - Jun 2010

Control Acct.....	Actual YTD	Forcs Acct Ytd
10-00-00-40 CREDITORS CONTROL (1) : PRI	-48,209.71	-7,202.98
ATE LEDGER		
10-00-00-40b CREDITORS CONTROL (1) : PRI	-24,907.61	-2,205.05
DATE LEDGER		
10-00-00-40c CREDITORS CONTROL (1) : PRI	12,162.00	1,220.00
DATE LEDGER		
10-00-00-41 CREDITORS CONTROL (2) : PRI	-10,960.69	427.14
ATE LEDGER		
	-72,015.91	-8,760.89

7 record(s) listed

Q1552150900A.TXT - Notepad

File Edit Format View Help

Gumay Hoops Inc.

14:08:20 29 JUN 2010 page 1

AP Creditor Ctrl Accounts Jan 2010 - Jun 2010

ledgerscode.....	Description.....	Actual YTD	Forcs Acct Ytd
10-00-00-40	CREDITORS CONTROL (1) : PRIVATE LED	-48,209.71	-7,202.98
	GERE		
10-00-00-40b	CREDITORS CONTROL (1) : PRIVATE LED	-24,907.61	-2,205.05
	GERE		
10-00-00-40c	CREDITORS CONTROL (1) : PRIVATE LED	12,162.00	1,220.00
	GERE		
10-00-00-41	CREDITORS CONTROL (2) : PRIVATE LED	-10,960.69	427.14
	GERE		
10-00-00-42	CREDITORS CONTROL (2) : PRIVATE LED	0.00	0.00
	GERE		
10-00-00-43	CREDITORS CONTROL (4) : PRIVATE LED	0.00	0.00
	GERE		
10-00-00-44	CREDITORS CONTROL (5) : PRIVATE LED	0.00	0.00
	GERE		
		-72,015.91	-8,760.89

7 record(s) listed

Slide 15

Slide notes: When we look at both of the Reports, then we should be able to correlate the totals in the top report with the bottom one, which means that the Sub Ledger is in perfect Balance with the GL.