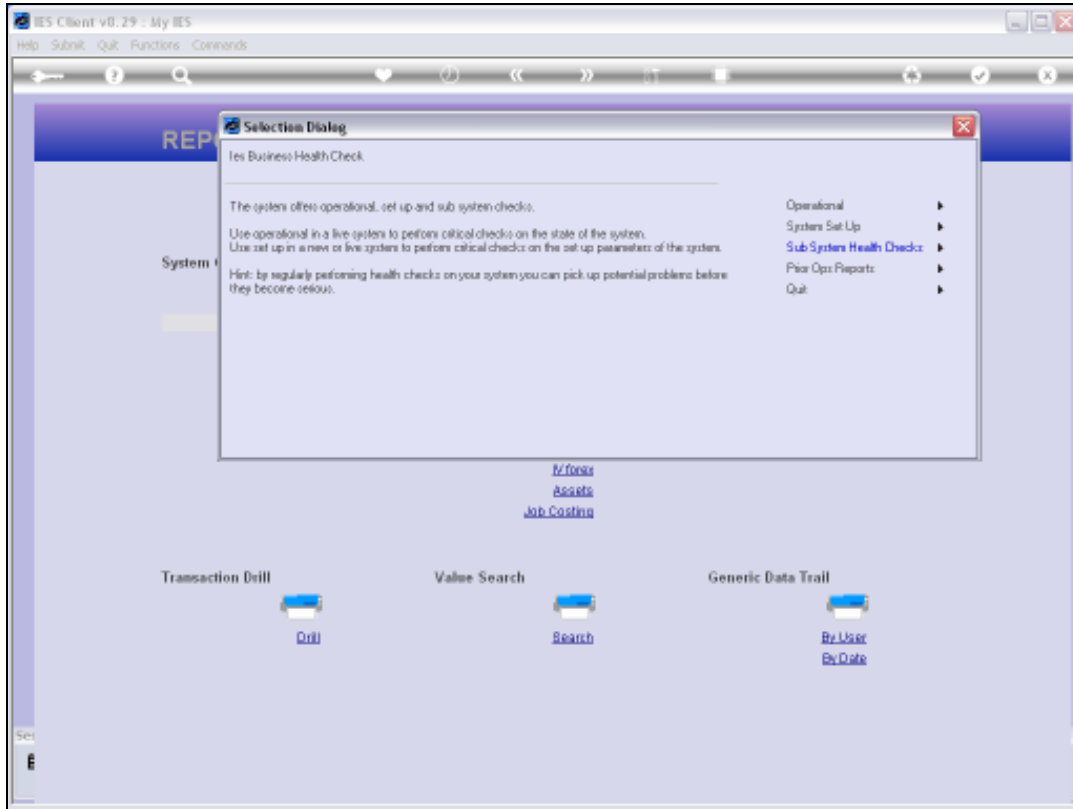
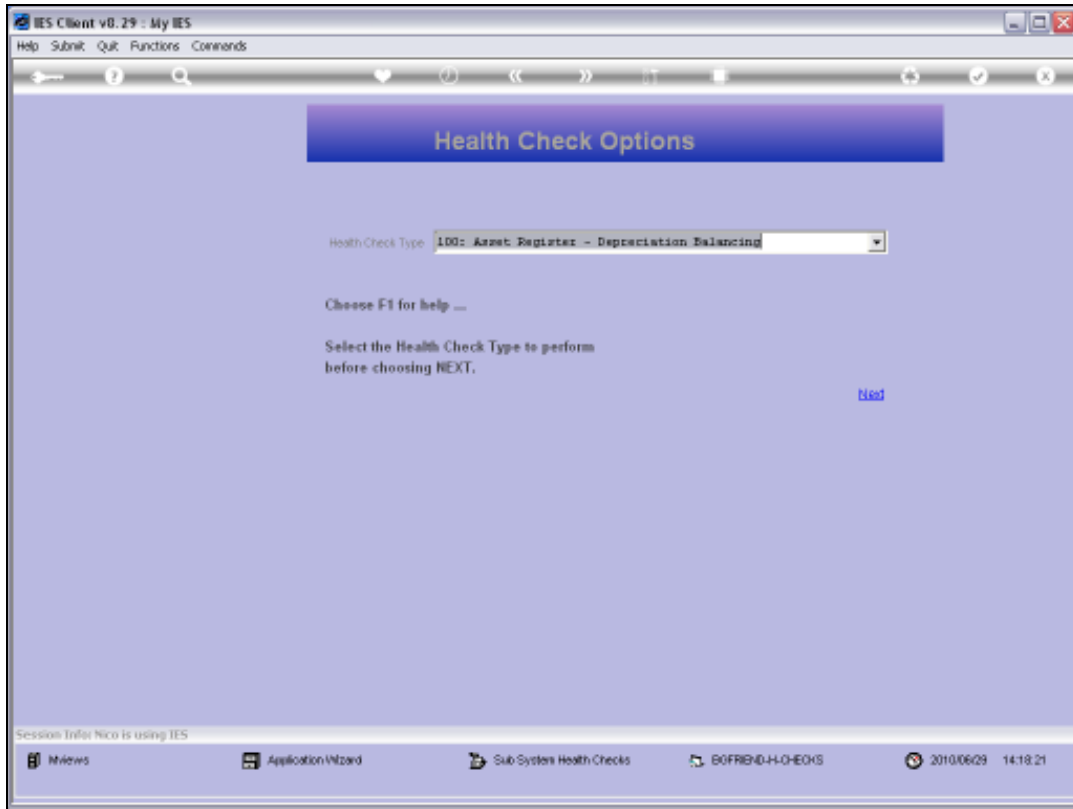


Slide 1

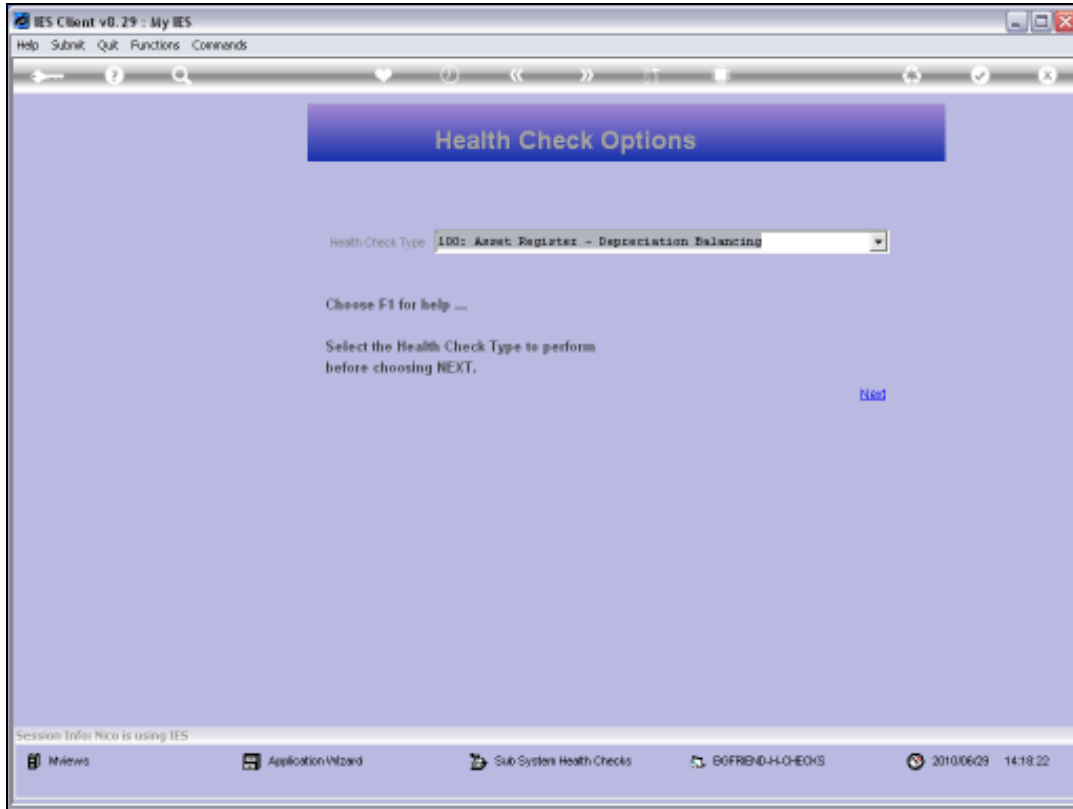
Slide notes: For the Stock Sub Ledger Balancing, we use the Sub System Health Checks 130 & 131.



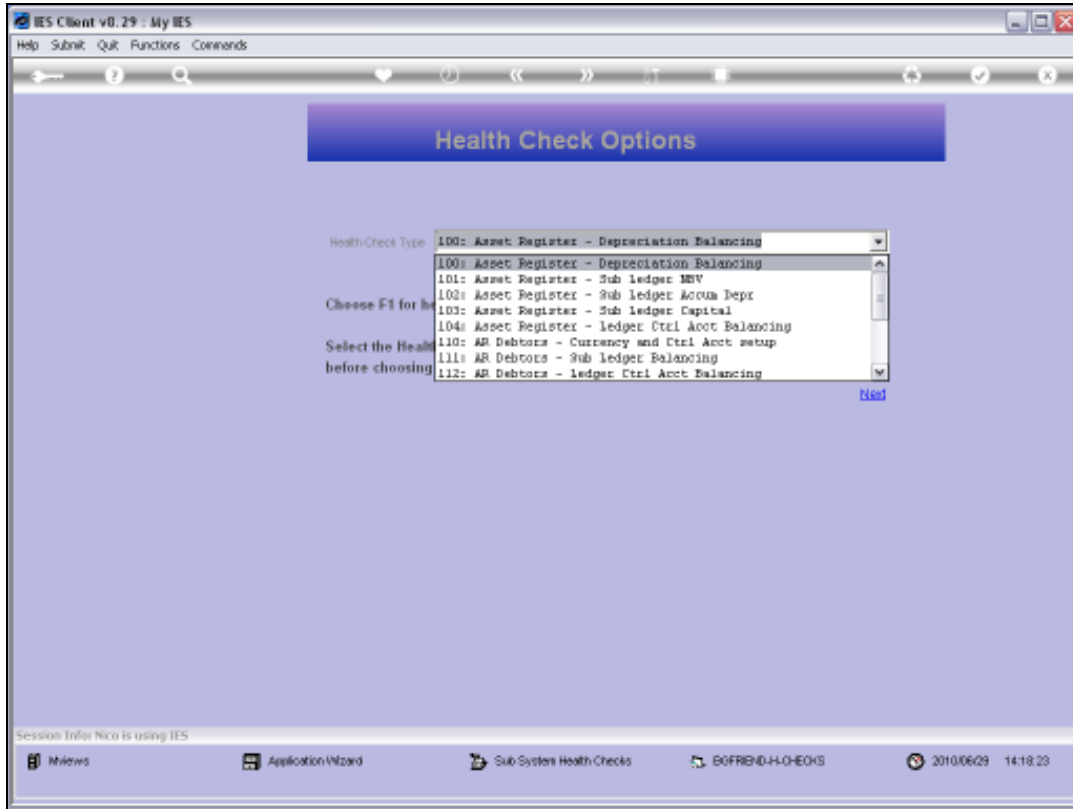
Slide 2
Slide notes:



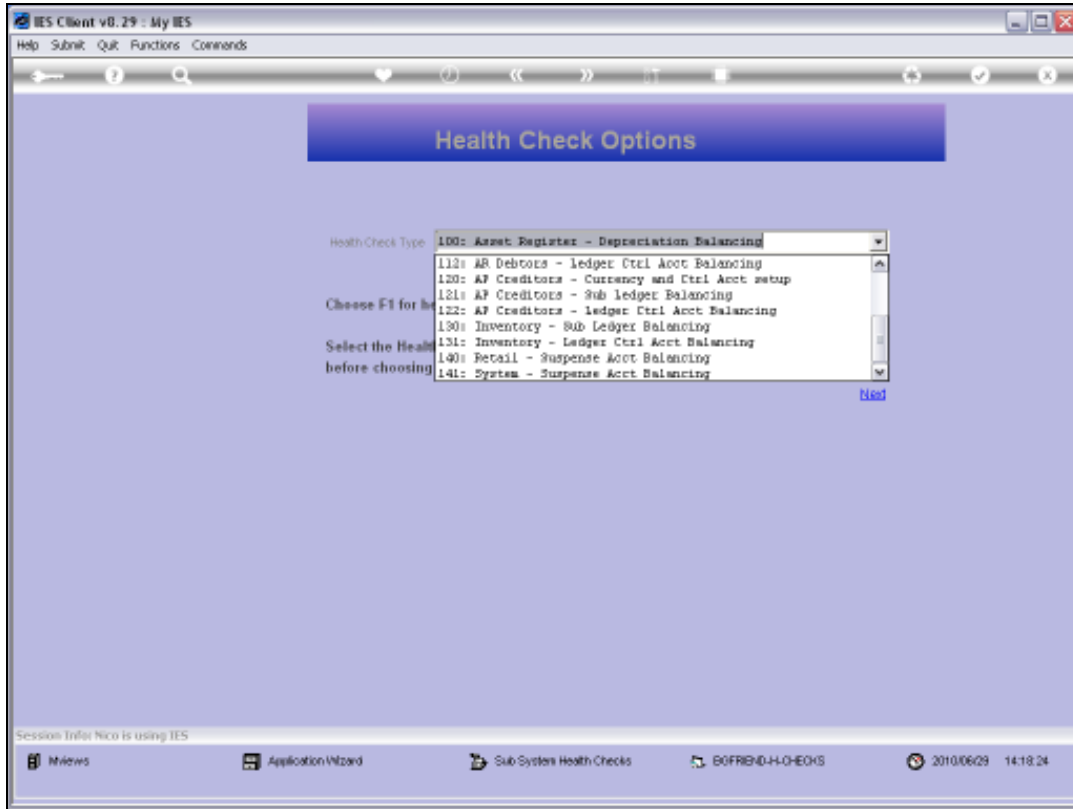
Slide 3
Slide notes:



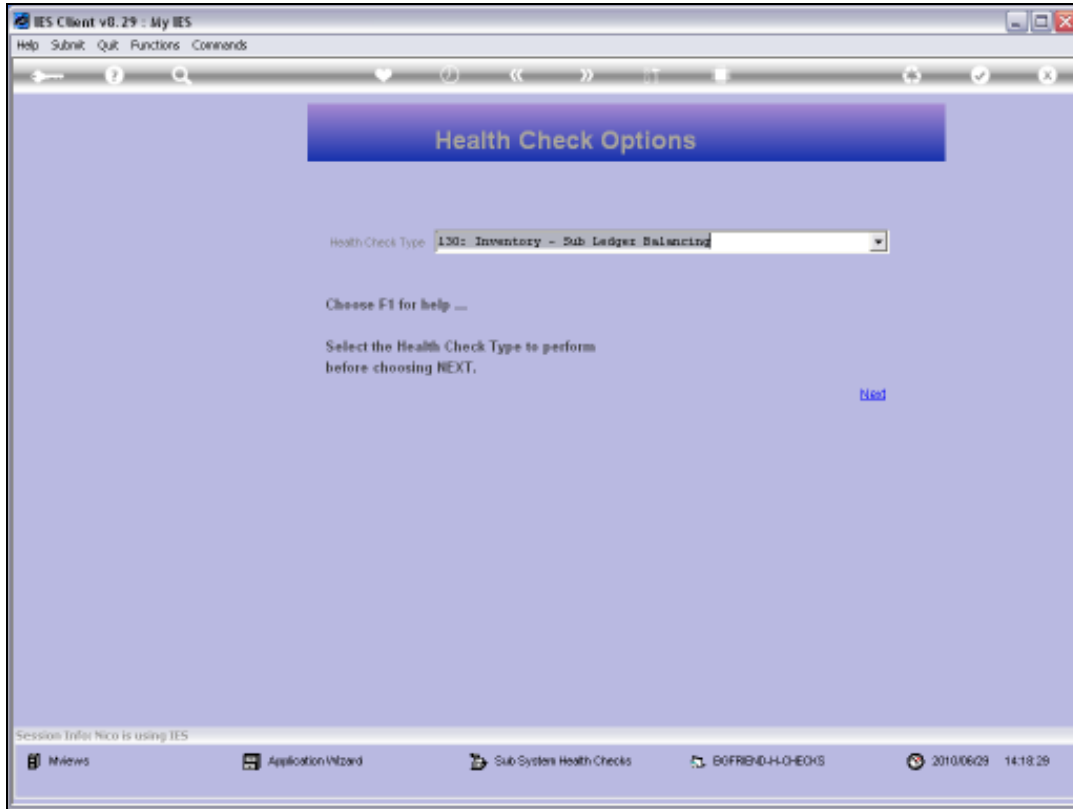
Slide 4
Slide notes:



Slide 5
Slide notes:

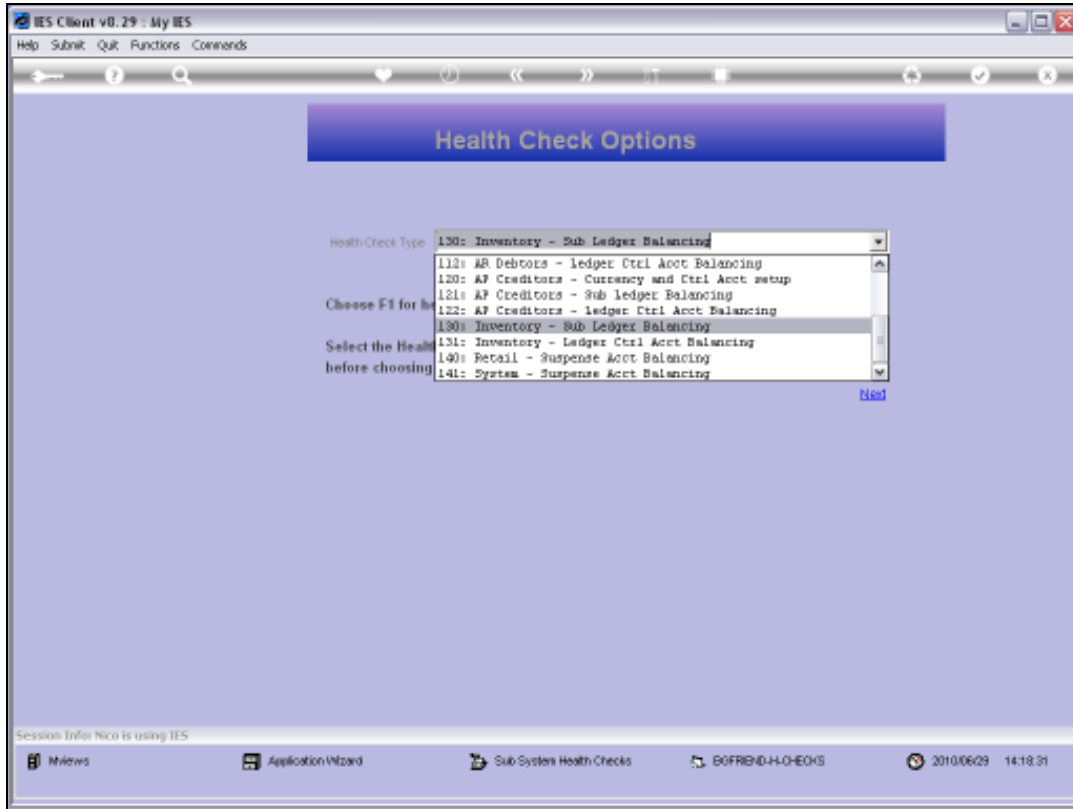


Slide 6
Slide notes:

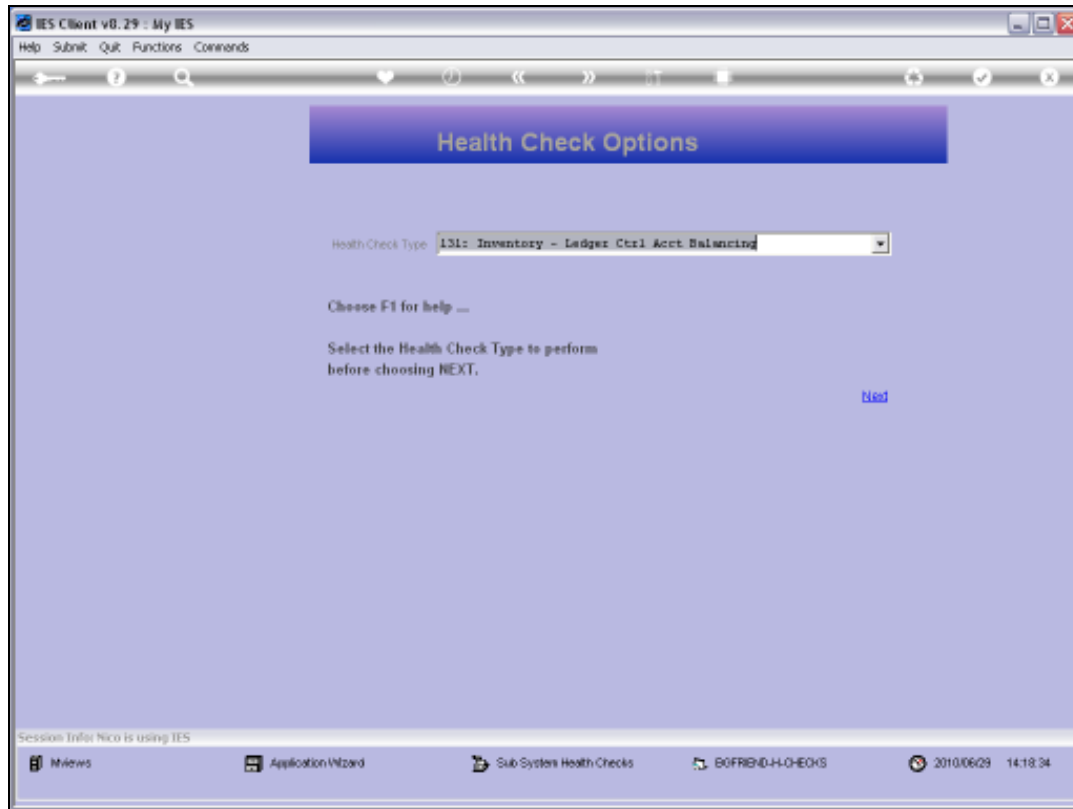


Slide 7

Slide notes: Check 130 will provide the totals from the Stock Accounts in the Sub Ledger.

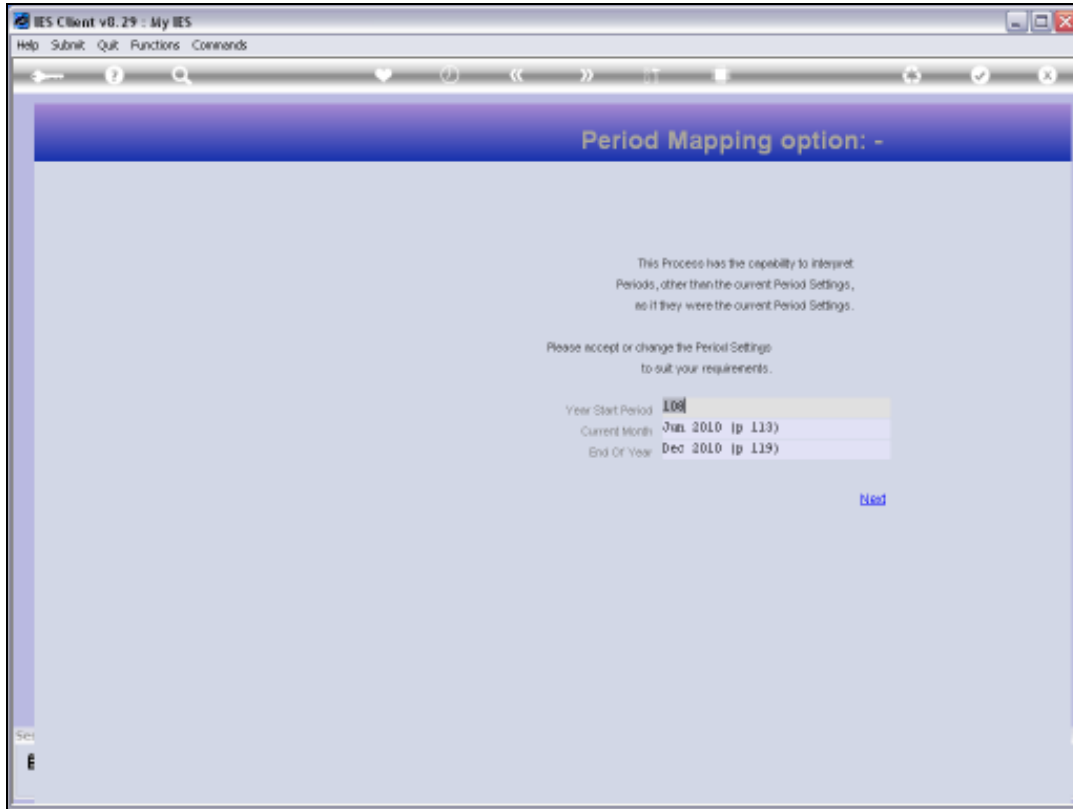


Slide 8
Slide notes:



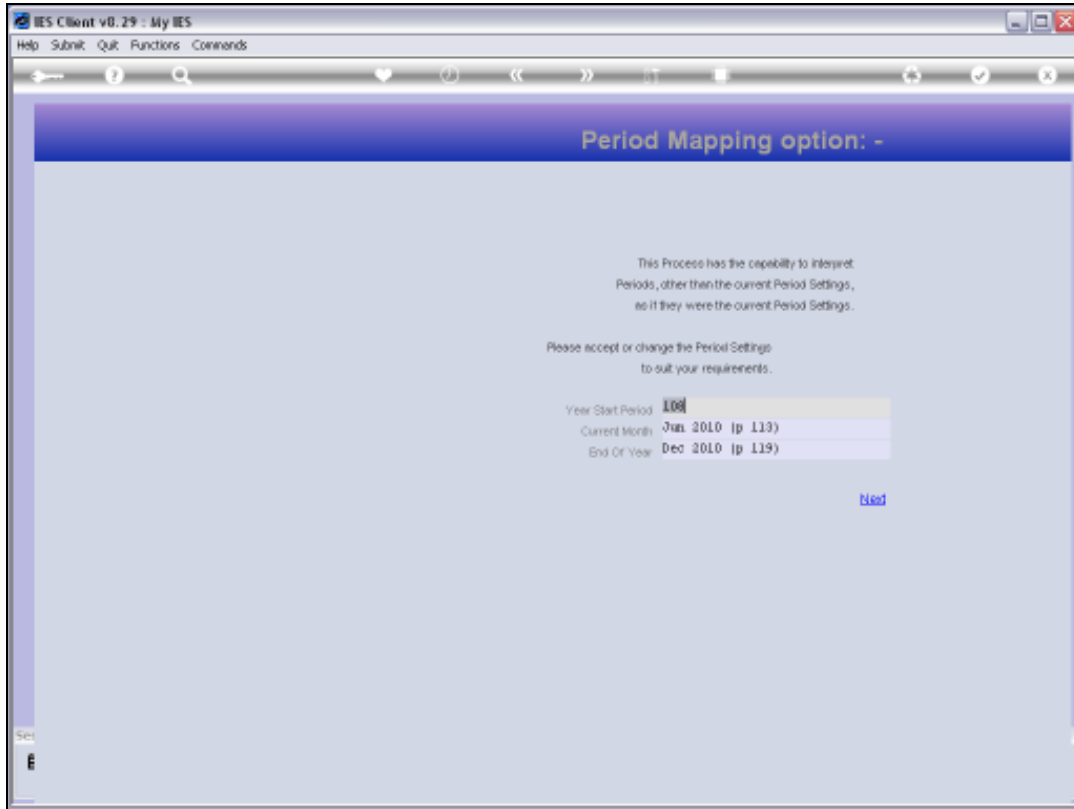
Slide 9

Slide notes: And check 131 will provide the totals from the Control Accounts in the General Ledger.



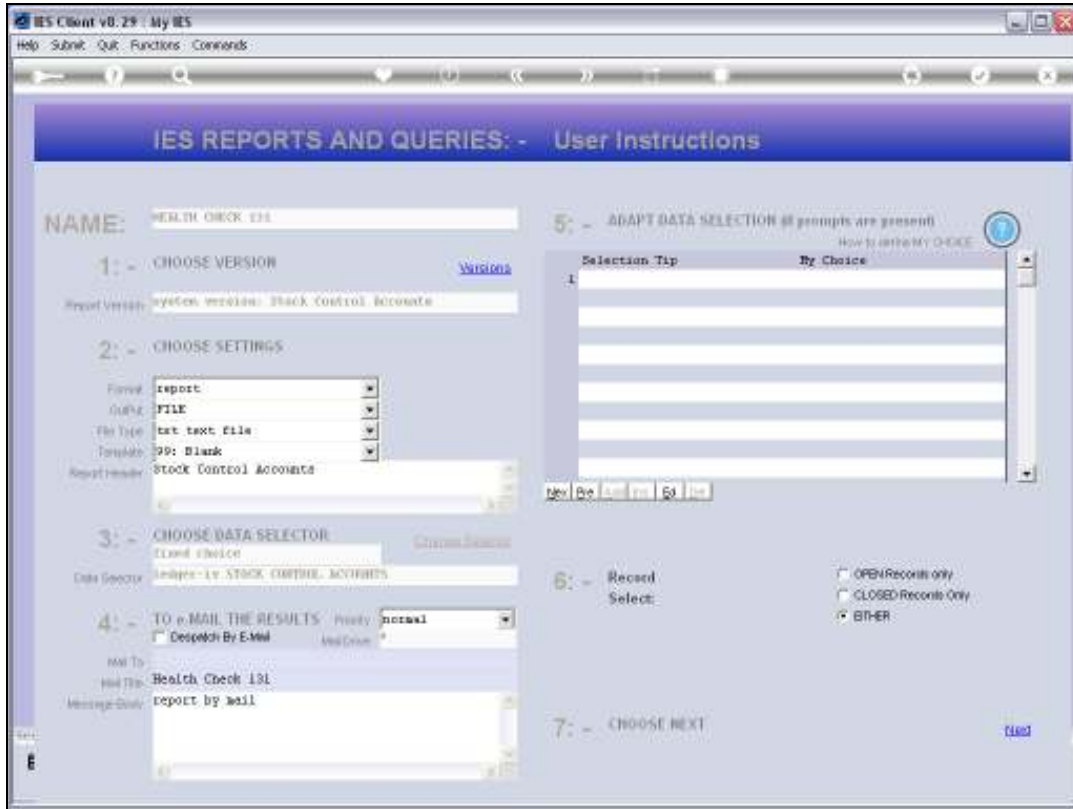
Slide 10

Slide notes: For each Report, we need to select the same Period settings.



Slide 11

Slide notes:



Slide 12
Slide notes:



Slide 13
Slide notes:

Q1552151548A.TXT - Notepad

File Edit Format View Help

Dummy Hoops Inc.

14:19:29 29 JUN 2010 page 1

Inventory Sub Ledger Jan 2010 - Jun 2010

...Actual Ptd Store

8,308,642.67	01
319,728.22	02
362,052.76	03
85,244.68	04
9,075,668.33	

Q1552151547A.TXT - Notepad

File Edit Format View Help

Dummy Hoops Inc.

14:19:07 29 JUN 2010 page 1

Stock Control Accounts Jan 2010 - Jun 2010

Ledgercode.....	Description.....	...Actual YTD
10-00-00-21	STORES CONTROL (3) : PRIVATE LEDGER	8,308,642.67
	S	
10-00-00-22	STORES CONTROL (4) : PRIVATE LEDGER	319,728.22
	S	
10-00-00-23	STORES CONTROL (5) : PRIVATE LEDGER	362,052.76
	S	
10-00-00-45	STORES CONTROL (1) : PRIVATE LEDGER	85,244.68
	S	
		9,075,668.33

Slide 14

Slide notes: When we look at both of the Reports, then we should be able to correlate the totals in the top report with the bottom one, which means that the Sub Ledger is in perfect Balance with the GL.

Q1552151548A.TXT - Notepad

File Edit Format View Help

Dummy Hoops Inc.

14:19:29 29 JUN 2010 page 1

Inventory Sub Ledger Jan 2010 - Jun 2010

Actual	Ptd	Store
8,308,642.67		01
319,728.22		02
362,052.76		03
85,244.68		04
9,075,668.33		

Q1552151547A.TXT - Notepad

File Edit Format View Help

Dummy Hoops Inc.

14:19:07 29 JUN 2010 page 1

Stock Control Accounts Jan 2010 - Jun 2010

Ledgercode	Description	Actual YTD
10-00-00-21	STORES CONTROL (3) : PRIVATE LEDGER	8,308,642.67
	S	
10-00-00-22	STORES CONTROL (4) : PRIVATE LEDGER	319,728.22
	S	
10-00-00-23	STORES CONTROL (5) : PRIVATE LEDGER	362,052.76
	S	
10-00-00-45	STORES CONTROL (1) : PRIVATE LEDGER	85,244.68
	S	
		9,075,668.33

Slide 15

Slide notes: