



Slide 1

Slide notes: How do we reach the Report Warehouse? Well, it is a standard Module in Business Datamarts, and it should be on our menu. That means we can select the Report Warehouse main console from the Application Menu.



Slide 2

Slide notes: And here it is. But, let us exit, and show another powerful navigation option to the Report Warehouse.



Slide 3

Slide notes: From ANY screen, whatever we are busy doing, we can choose the "tools" icon at the top of the screen, and from the tools menu, we have shortcuts to the major sections of the Report Warehouse.

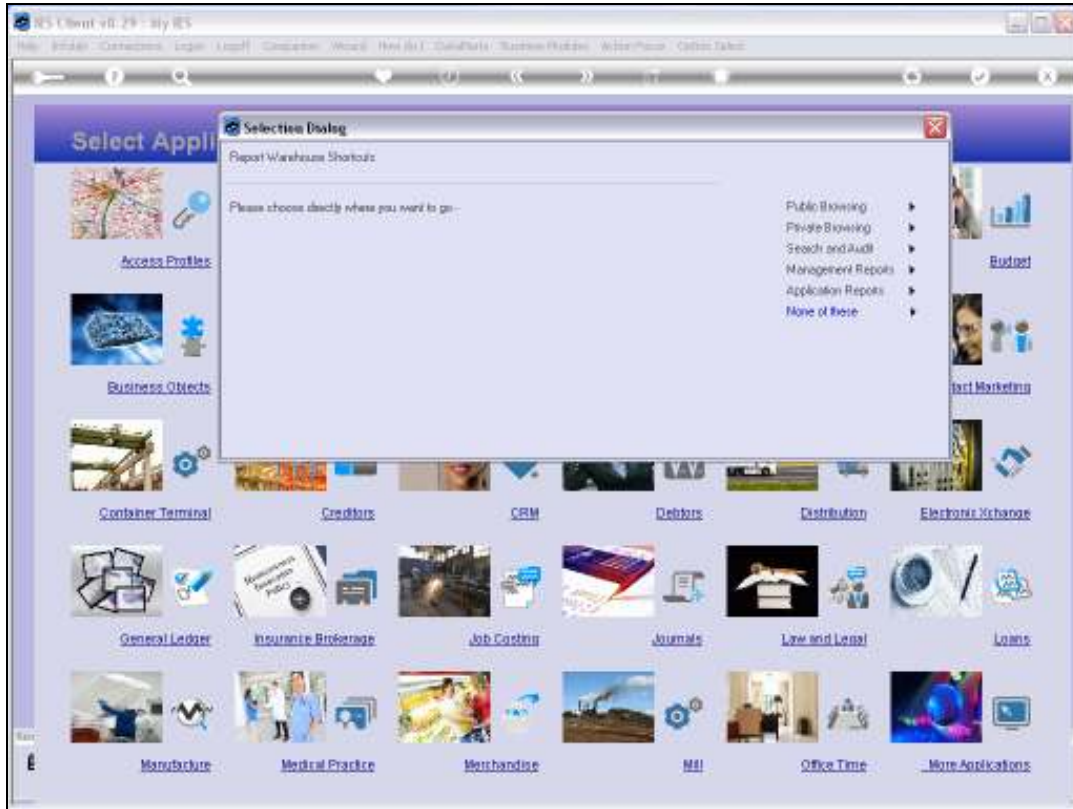


Slide 4

Slide notes: Just choose 'My Report Warehouse'.



Slide 5
Slide notes:



Slide 6

Slide notes: And then we have direct shortcuts to the primary Report Warehouse functions.



Slide 7
Slide notes: