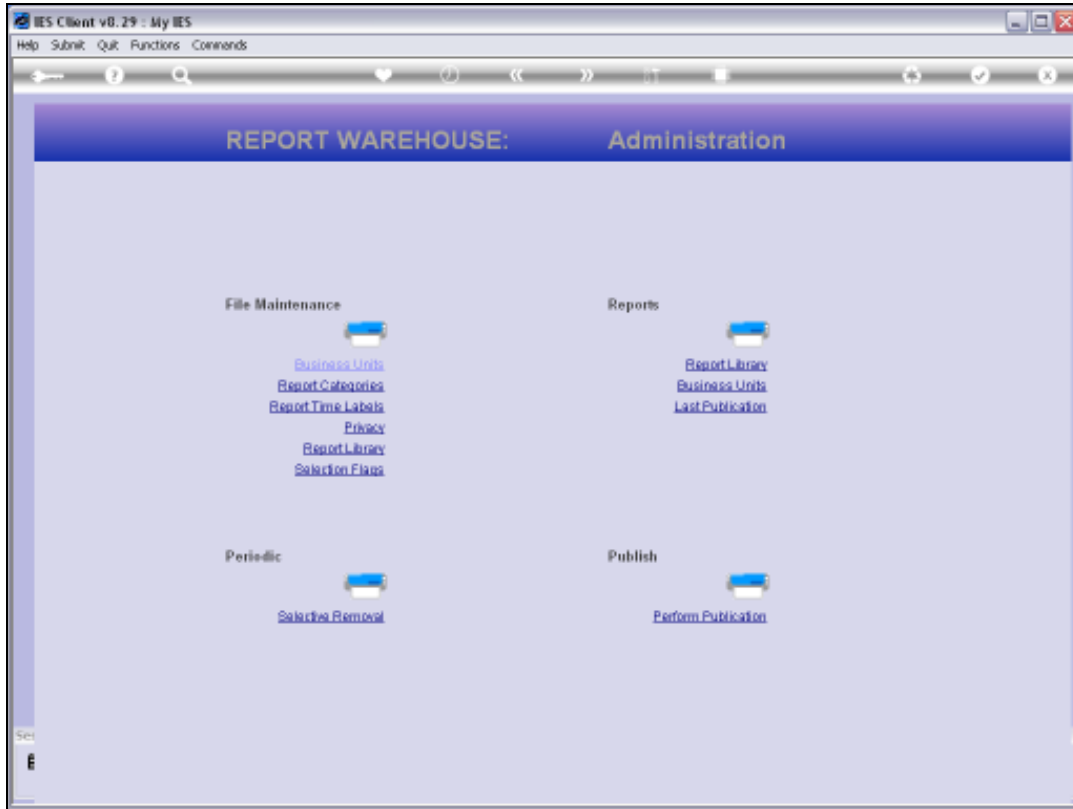


Slide 1

Slide notes: We use Warehouse Management functions to control Access to Private Business Units.



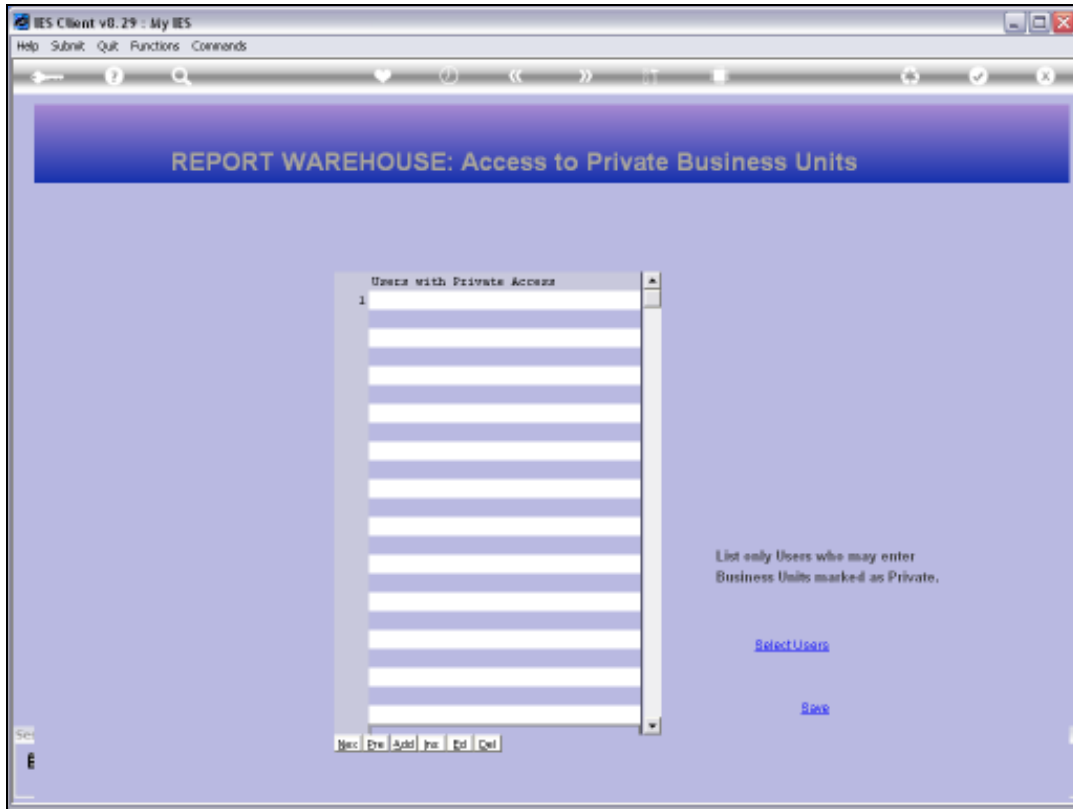
Slide 2

Slide notes: The Privacy function is used for this.

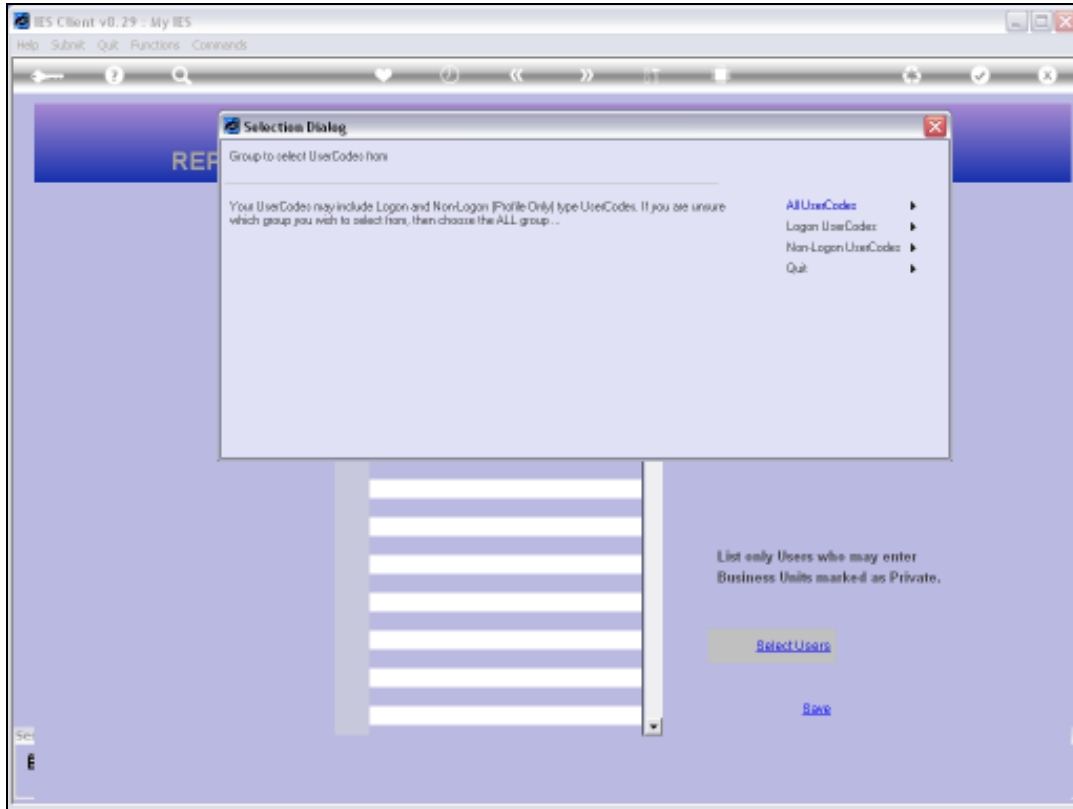


Slide 3

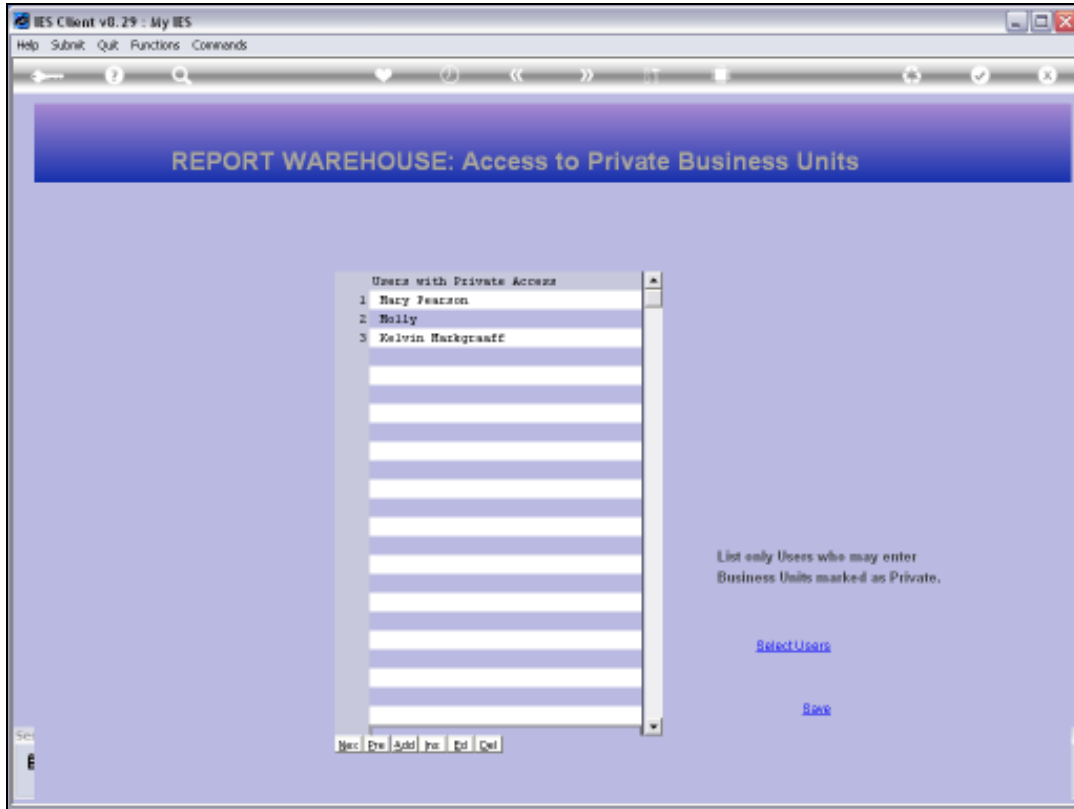
Slide notes: Generally speaking, Report Warehouses can exist in multiple Business Datamarts, and whenever a User has access to a specified Business Datamart, then the User also has access to the browsing of the Reports in the Public Report Warehouse in the Datamart, in all Business Units that are not marked for Privacy. When a Business Unit is marked for privacy, then only the Users included on the Privacy list will have access to viewing of Reports published in such Business Units.



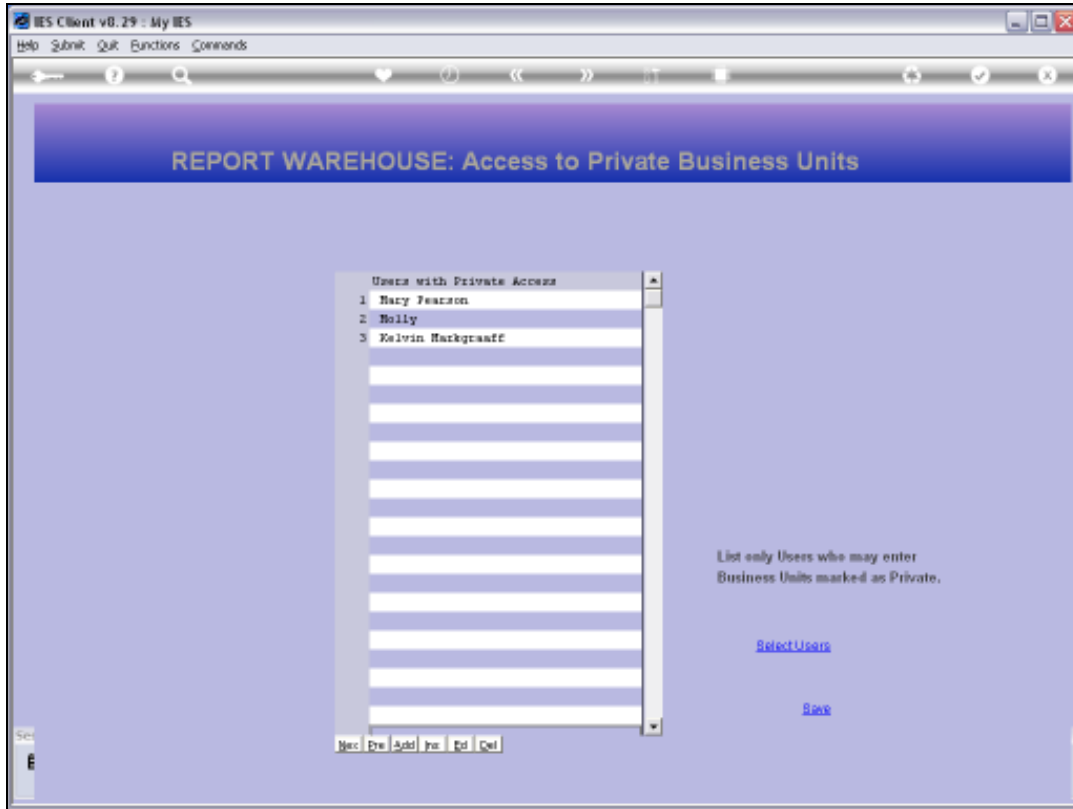
Slide 4
Slide notes:



Slide 5
Slide notes:

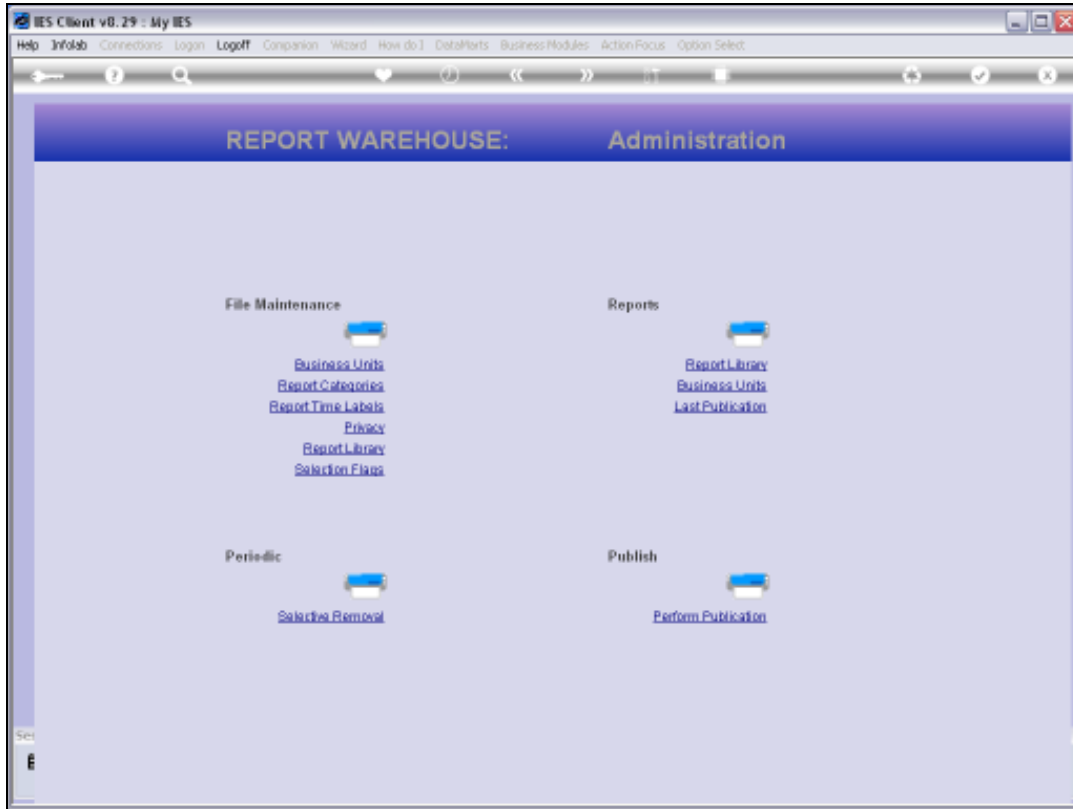


Slide 6
Slide notes:

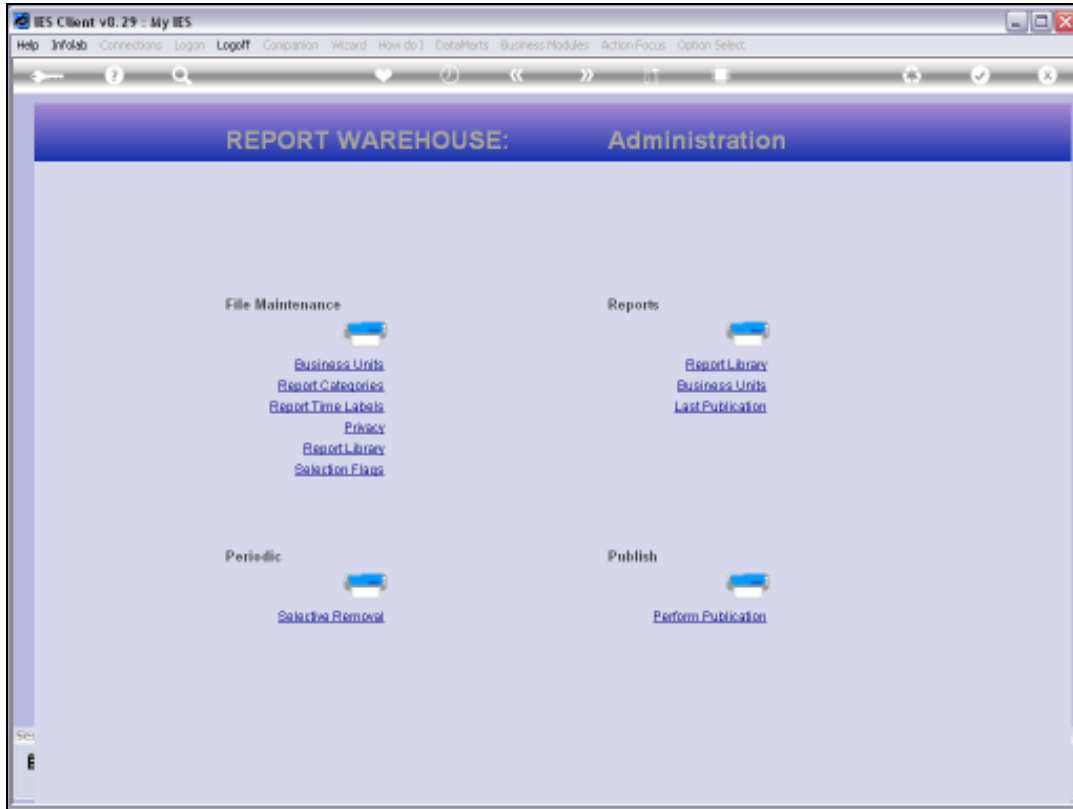


Slide 7

Slide notes: So here we have now included 3 Users who will have access to the Reports in Business Units in this Datamart that are marked for Privacy.



Slide 8
Slide notes:



Slide 9
Slide notes: