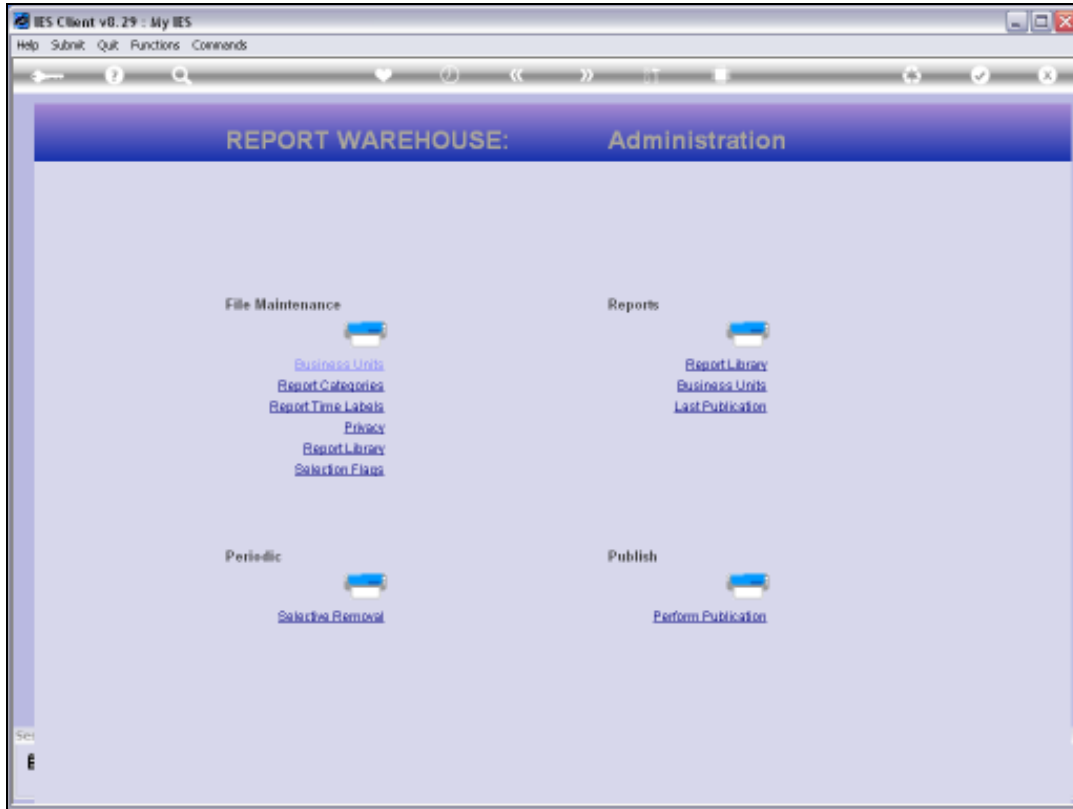
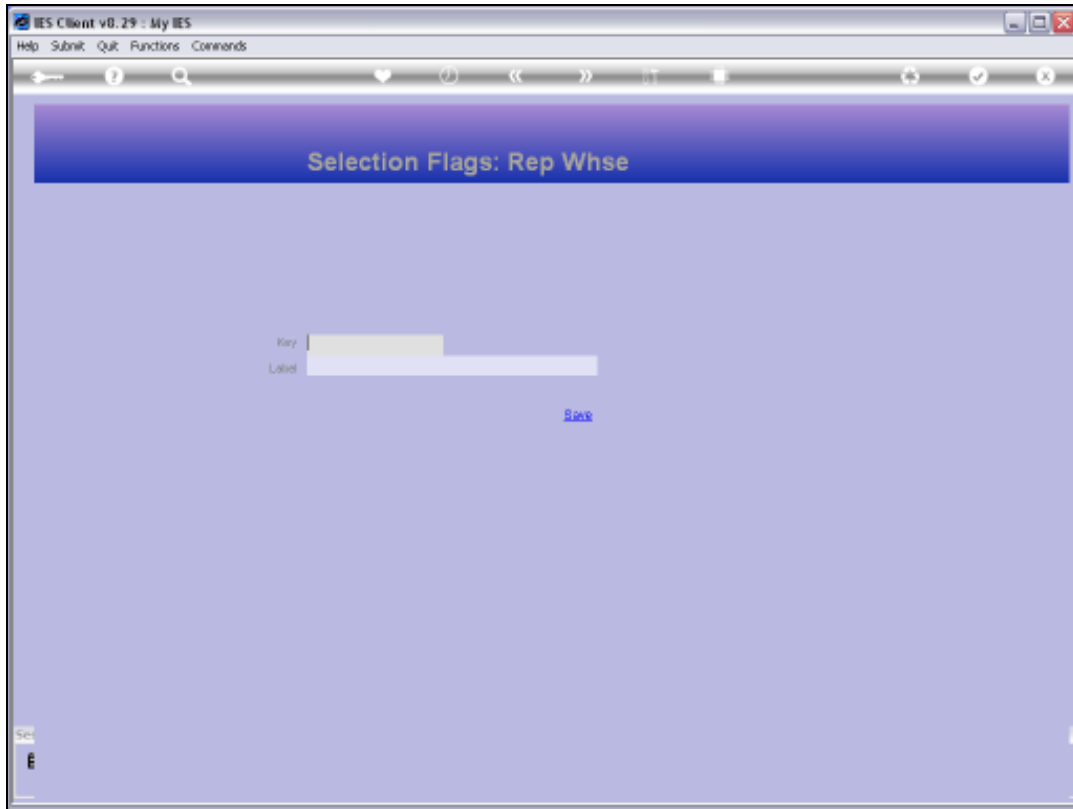


Slide 1

Slide notes: We use Selection Flags in Warehouse Management to flag the Report Library entries, so that we can easily select the correct Reports to publish during a Publication run.

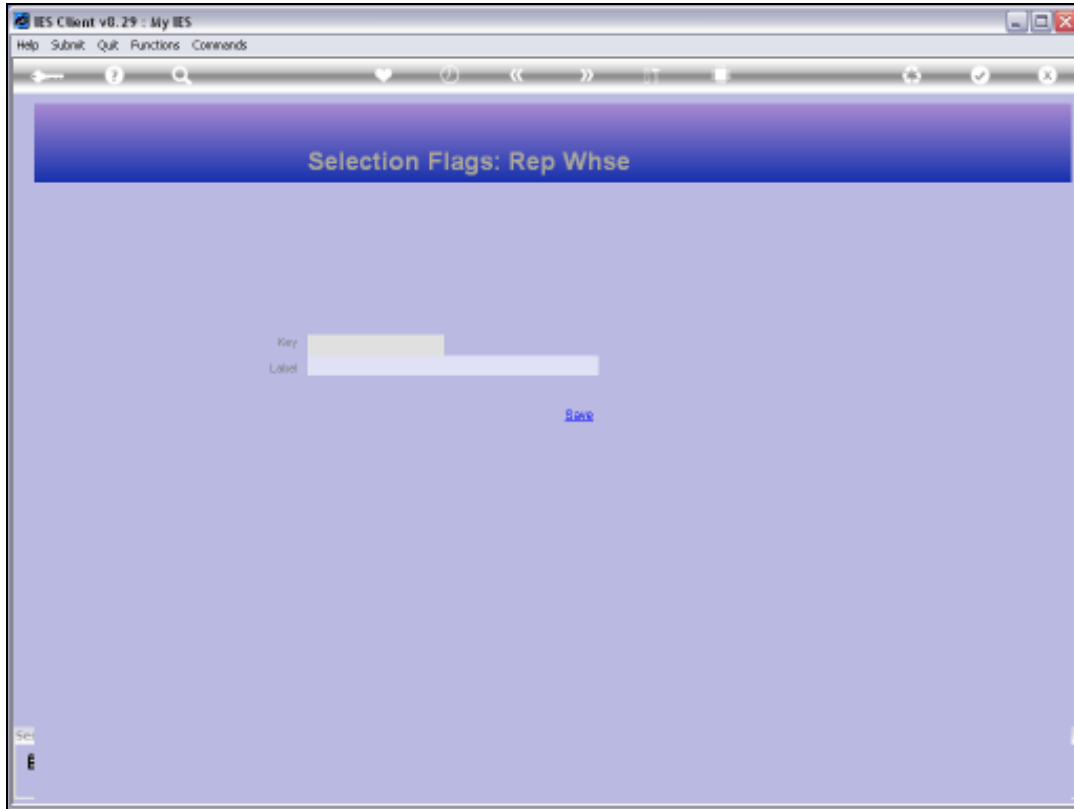


Slide 2
Slide notes:



Slide 3

Slide notes:



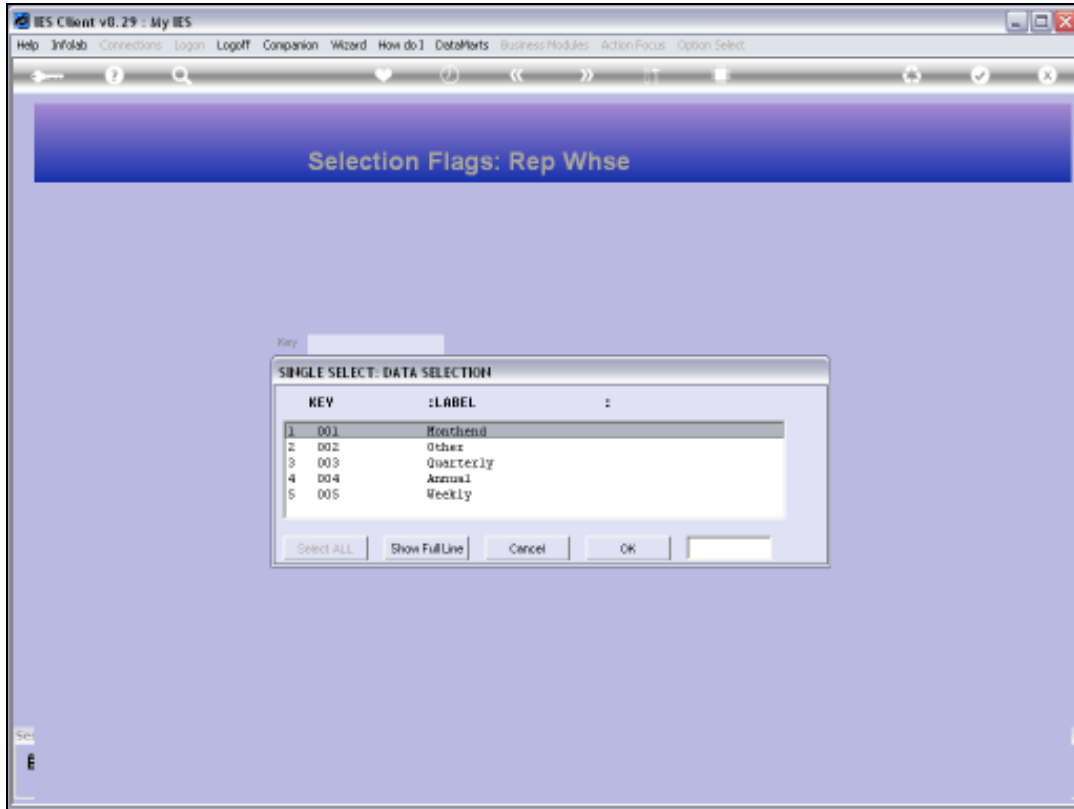
Slide 4

Slide notes:

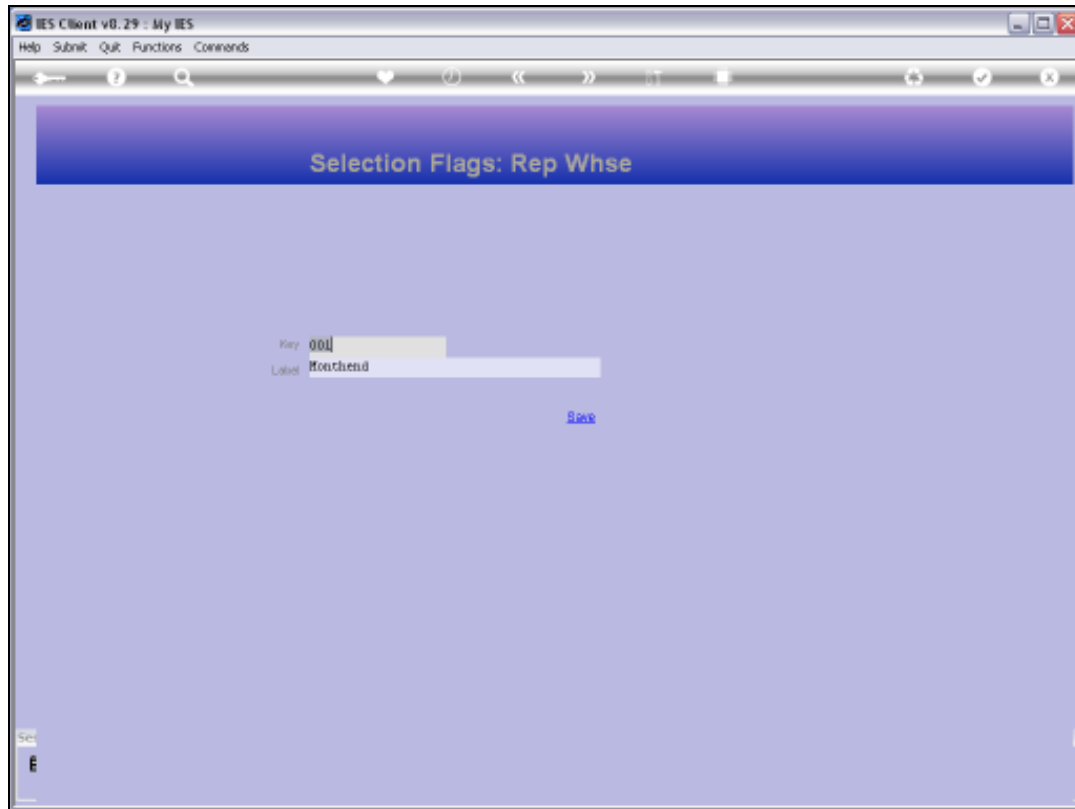


Slide 5

Slide notes:

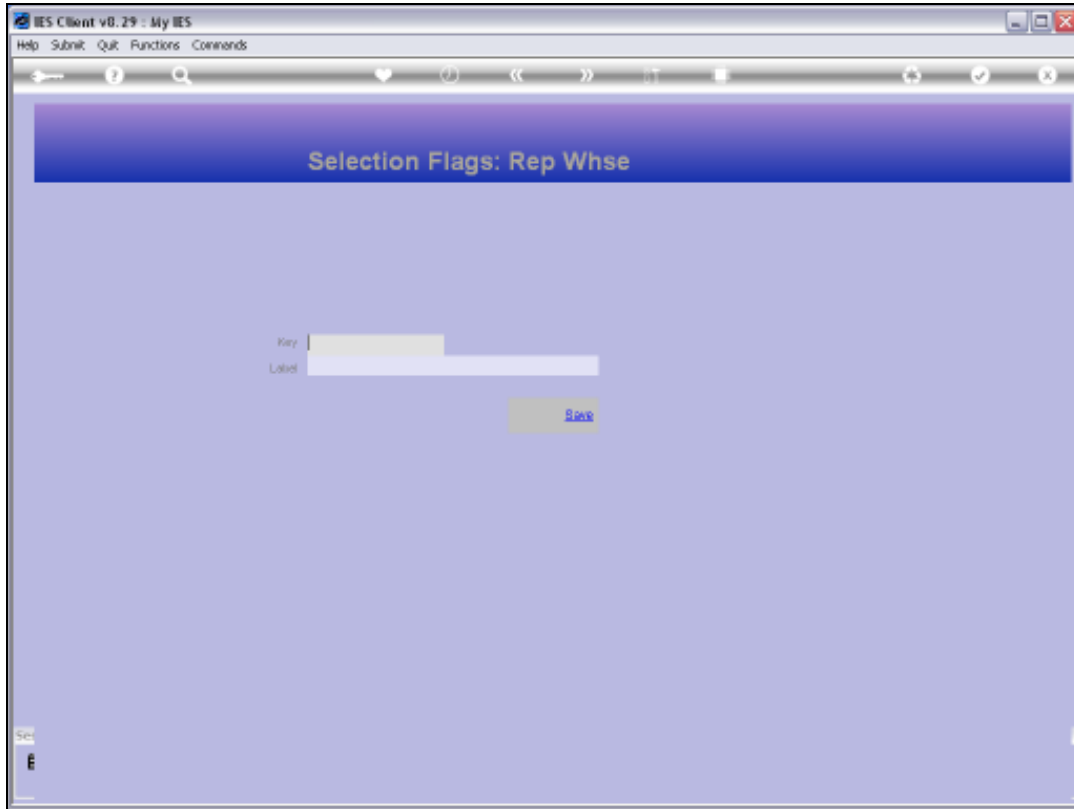


Slide 6
Slide notes:



Slide 7

Slide notes: We can have any number of these Selection Flags. We give them a Key of our own design, and of course the Label by which we recognize them. If we no longer want to use a certain Flag, then it can be deleted.



Slide 8

Slide notes: