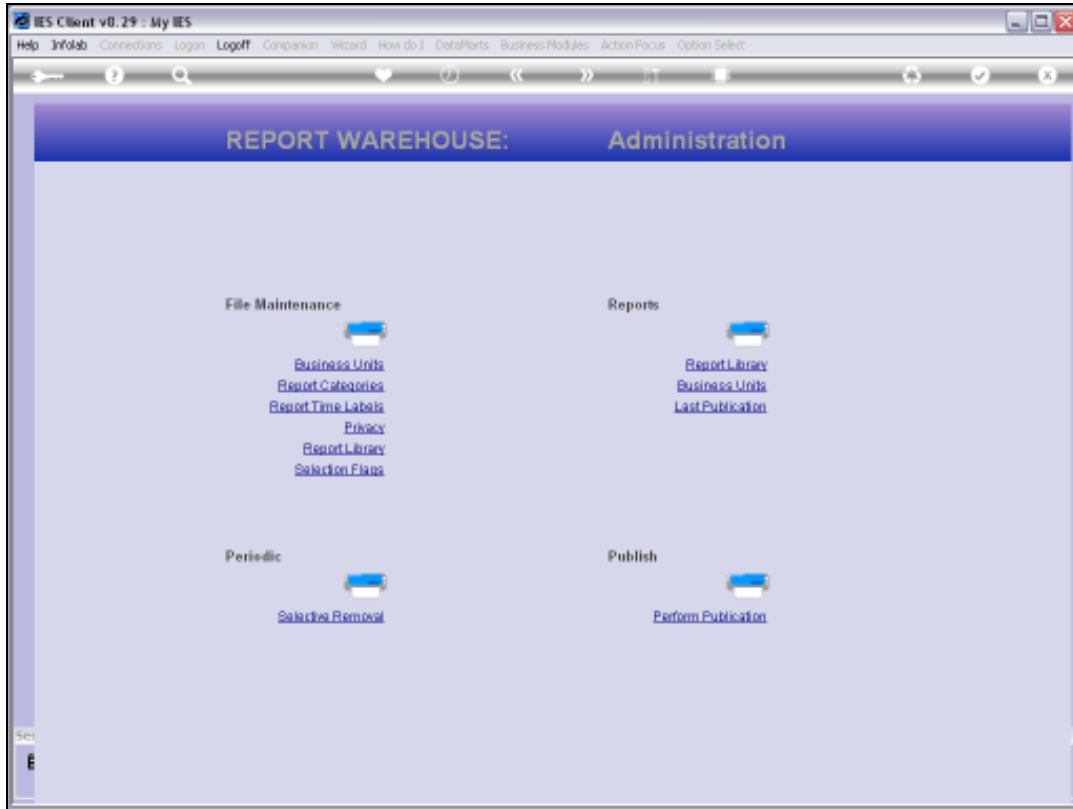
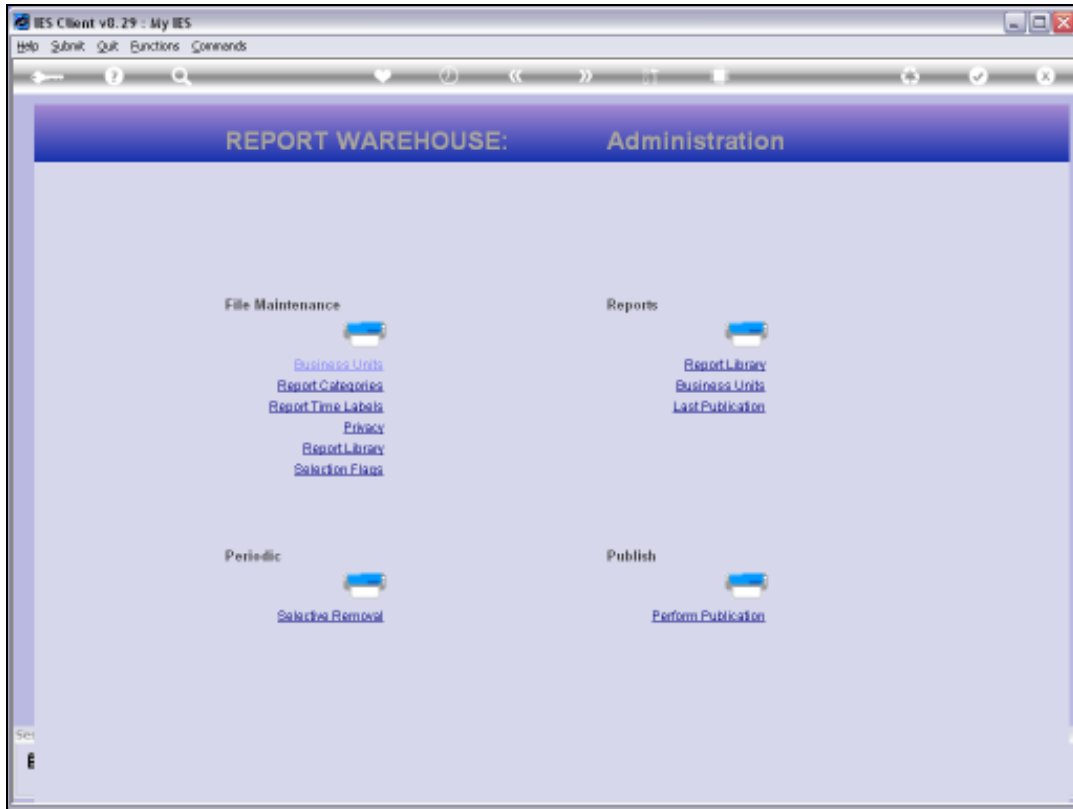


Slide 1

Slide notes: At Warehouse Management we will find the option to perform a Publication Run.



Slide 2
Slide notes:



Slide 3
Slide notes:

The screenshot shows the 'PUBLICATION RUNTIME VALUES' configuration window in the IES Client v8.29. The window title is 'My IES'. The main heading is 'PUBLICATION RUNTIME VALUES'. Below the heading, there is a paragraph: 'The Publication run will provide the values specified here to all reports that usually use the Period Mapping and other parameters listed here.'

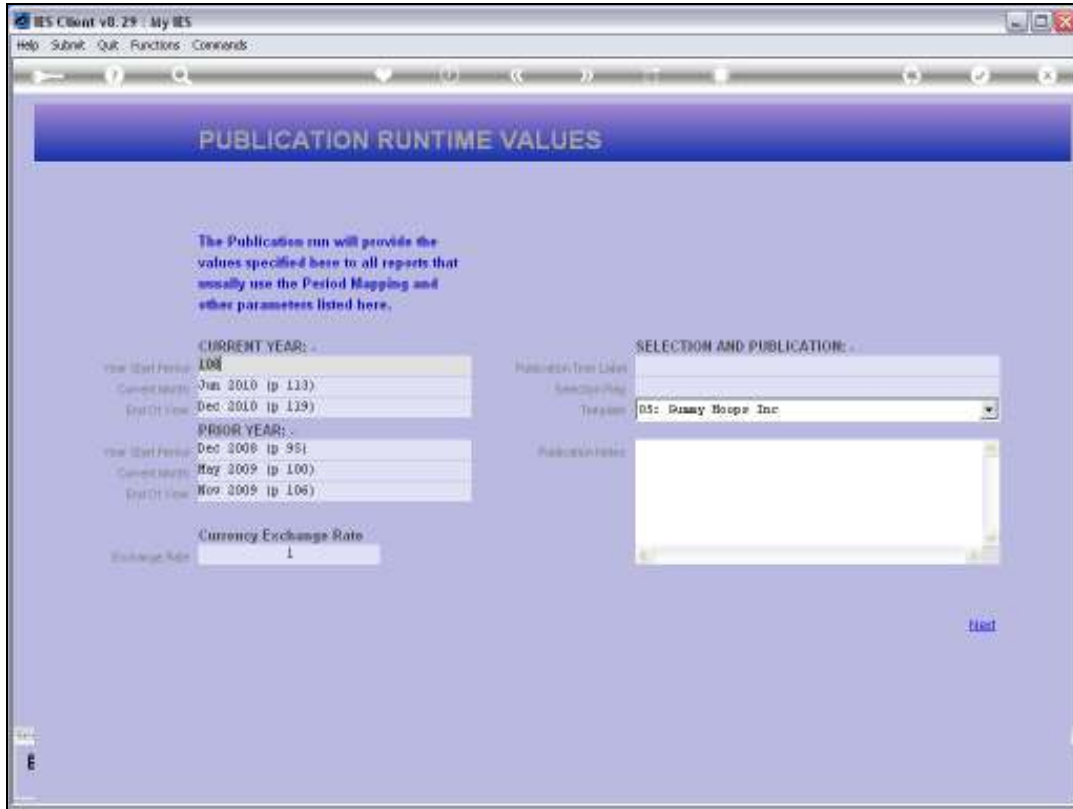
The configuration is divided into several sections:

- CURRENT YEAR:** Includes 'Year Start Period' (LO8), 'Current Month' (Jun 2010 (p 113)), and 'End Of Year' (Dec 2010 (p 119)).
- PRIOR YEAR:** Includes 'Year Start Period' (Dec 2009 (p 95)), 'Current Month' (May 2009 (p 100)), and 'End Of Year' (Nov 2009 (p 106)).
- Currency Exchange Rate:** Includes 'Exchange Rate' (1).
- SELECTION AND PUBLICATION:** Includes 'Publication Tree Link', 'Selection Path', 'Tree path' (05: Quany Hoops Inc), and 'Publication Notes'.

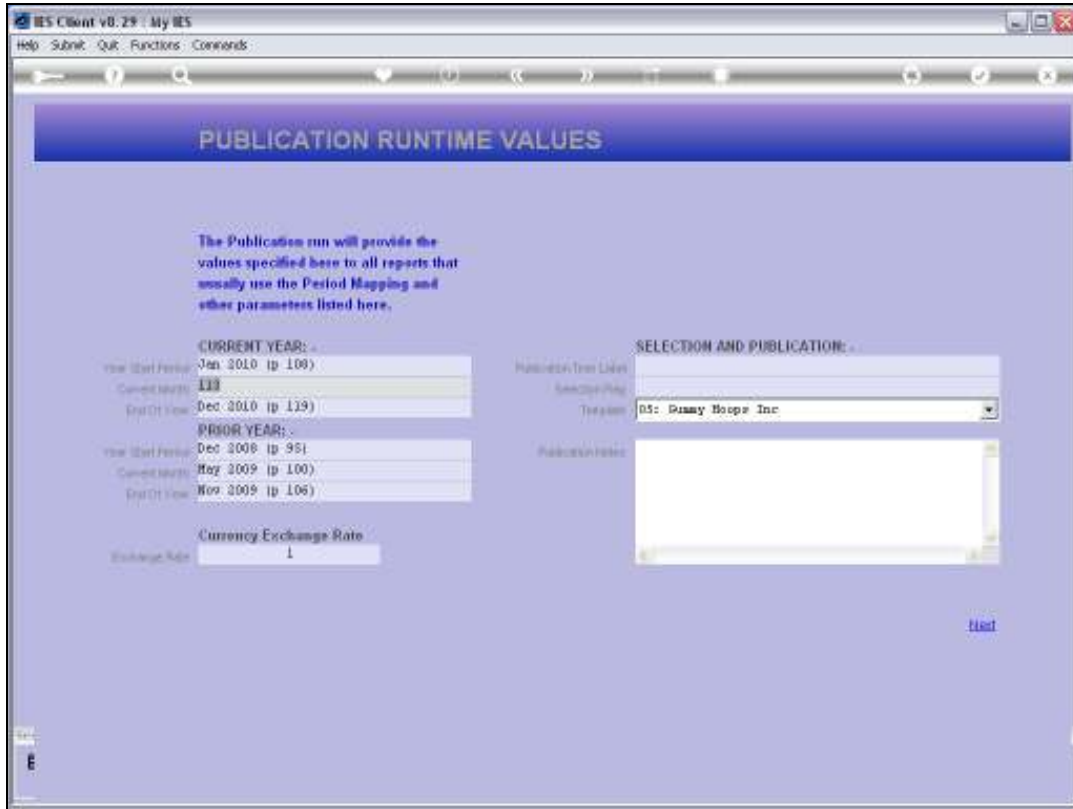
A 'Next' button is located at the bottom right of the window.

Slide 4

Slide notes: A Publication Run can include a few, or many, even thousands, of Reports that will automatically be performed and published. We need to select the performance parameters, for example the Period Settings. In this case, we will be performing month end Reports for June 2010, and we select our Year and Prior Year settings accordingly.



Slide 5
Slide notes:



Slide 6
Slide notes:

IES Client v8.29 - My IES
Help Submit Quit Functions Commands

PUBLICATION RUNTIME VALUES

The Publication run will provide the values specified here to all reports that usually use the Period Mapping and other parameters listed here.

CURRENT YEAR: -
Year Start Period: Jan 2010 (p 109)
Current Month: Jan 2010 (p 113)
End Of Year: **113**

PRIOR YEAR: -
Year Start Period: Dec 2009 (p 95)
Current Month: May 2009 (p 100)
End Of Year: Nov 2009 (p 106)

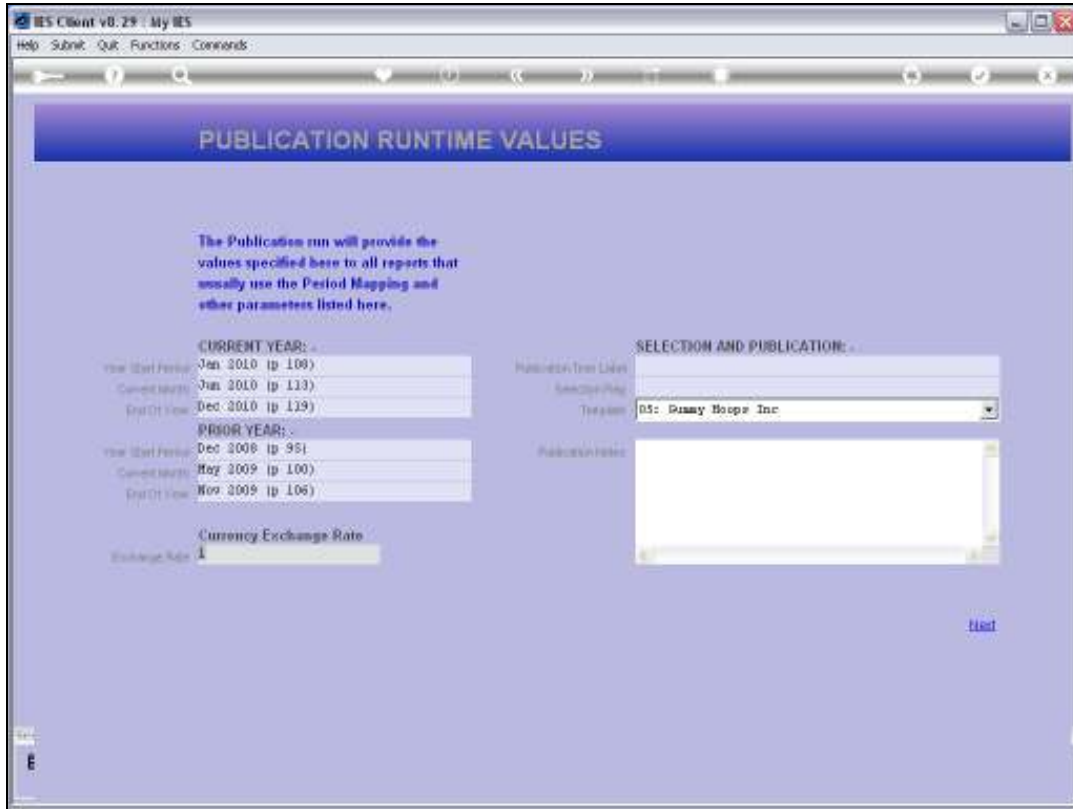
Currency Exchange Rate
Exchange Rate: 1

SELECTION AND PUBLICATION: -
Publication Tree Label:
Selection Rule:
Tree path: 05: Quany Hoops Inc
Publication Notes:

[Next](#)

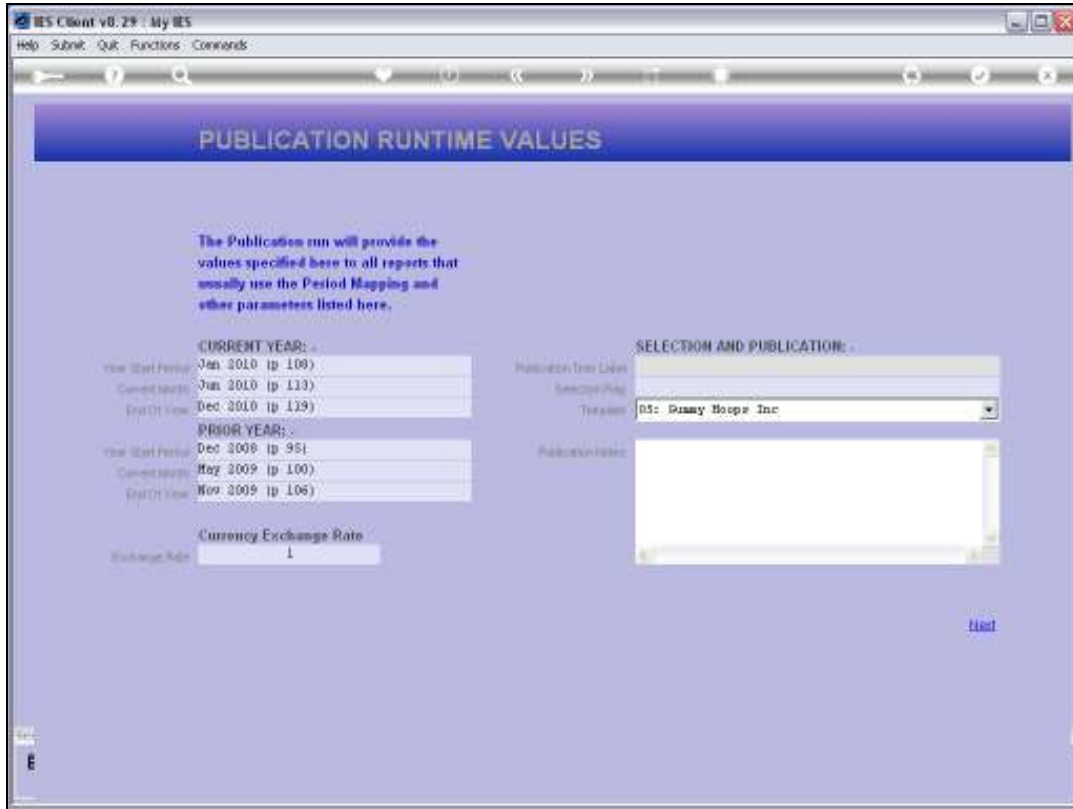
Slide 7

Slide notes: Depending on our operation, there may be an Exchange Rate to select, but in this case there is not.

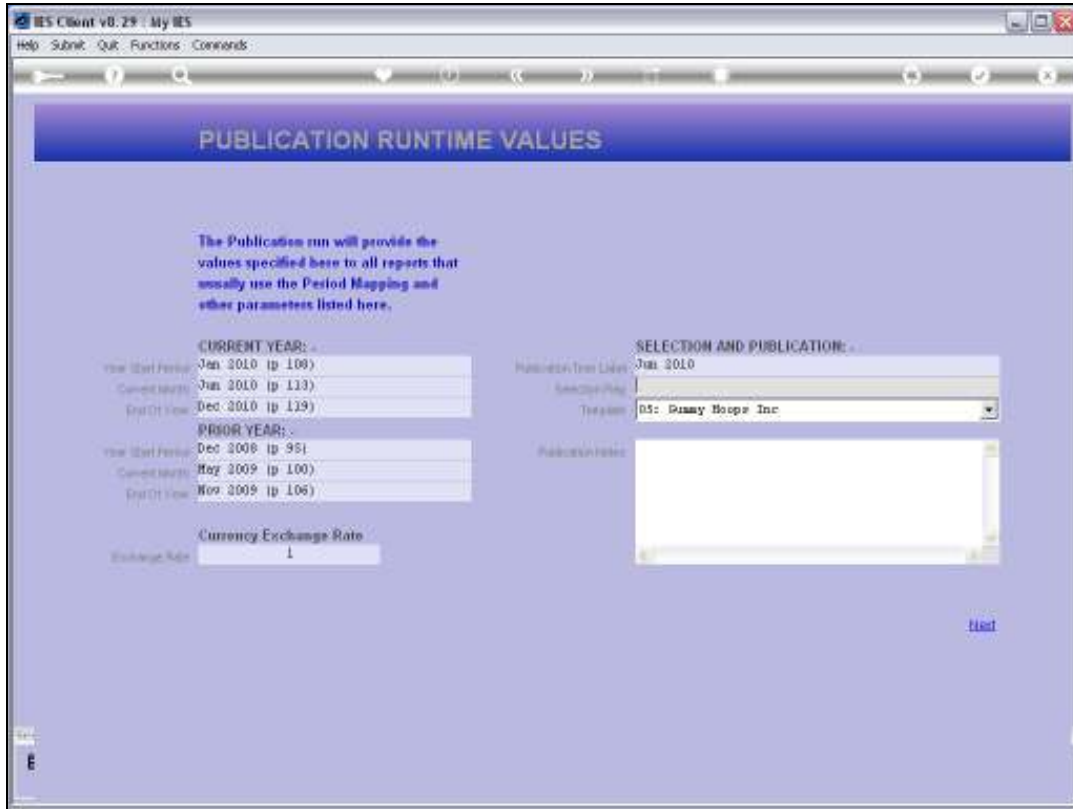


Slide 8

Slide notes: The Time Label, like the other settings, will be used for the publication of all Reports in this selection.

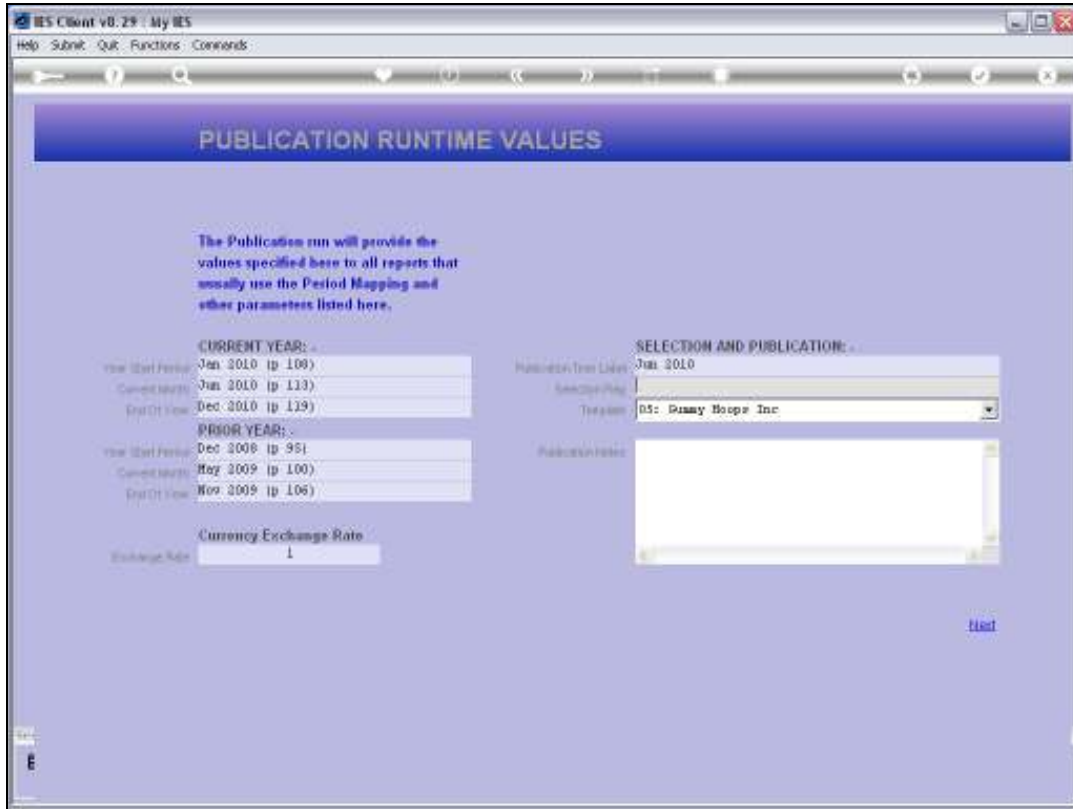


Slide 9
Slide notes:

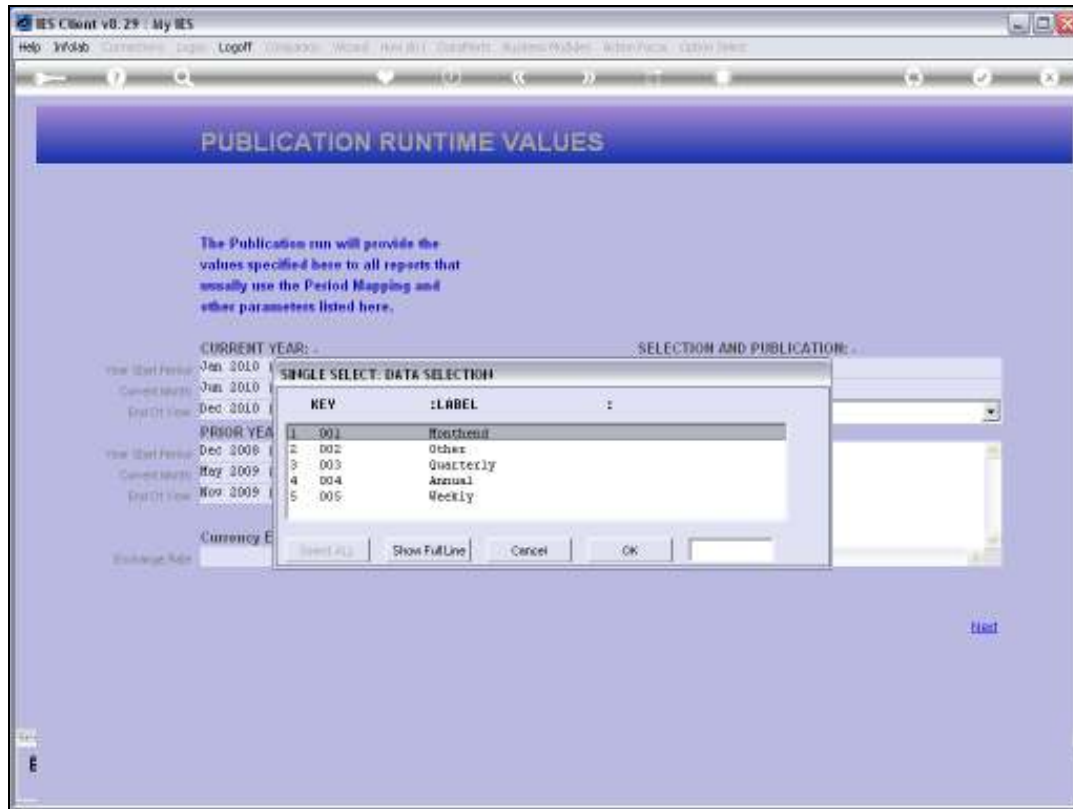


Slide 10

Slide notes:



Slide 11
Slide notes:



Slide 12

Slide notes: The Selection Flag will determine which Reports are selected from the Report Library for execution now.

IES Client v8.29 : My IES
Help Submit Quit Functions Comments

PUBLICATION RUNTIME VALUES

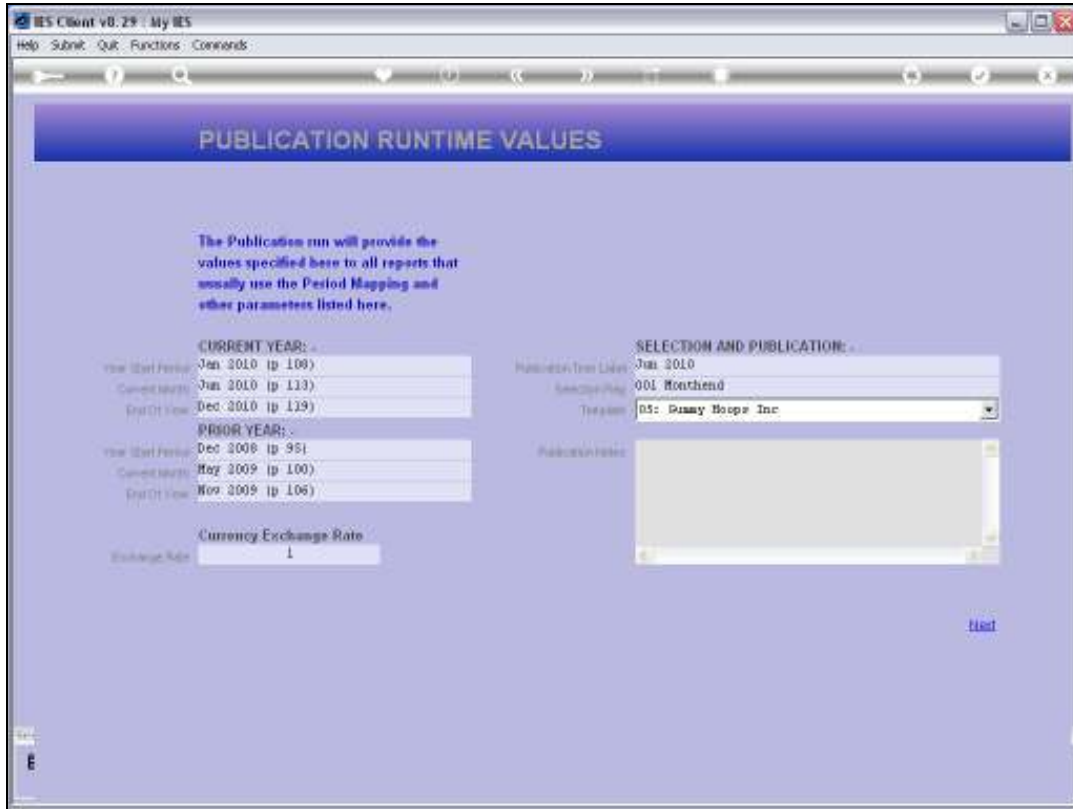
The Publication run will provide the values specified here to all reports that usually use the Period Mapping and other parameters listed here.

CURRENT YEAR: -		SELECTION AND PUBLICATION: -	
Year Start Period	Jan 2010 (p 109)	Publication Date Label	Jan 2010
Current Month	Jan 2010 (p 113)	Selection Key	001
End Of Year	Dec 2010 (p 119)	Template	BS: Dummy Report - Inc
PRIOR YEAR: -		Publication Notes	
Year Start Period	Dec 2009 (p 95)		
Current Month	May 2009 (p 100)		
End Of Year	Nov 2009 (p 106)		
Currency Exchange Rate			
Exchange Rate	1		

[Next](#)

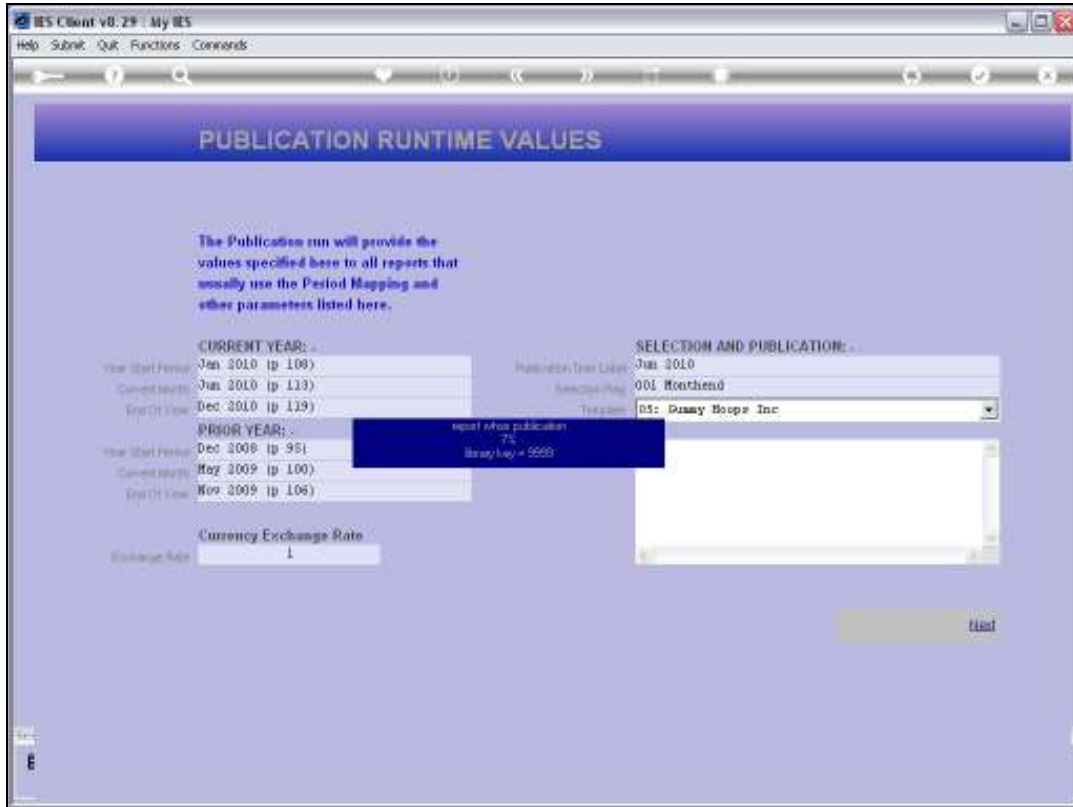
Slide 13

Slide notes: The Template selection is optional, and will be used for any Quick Reports that may be included.



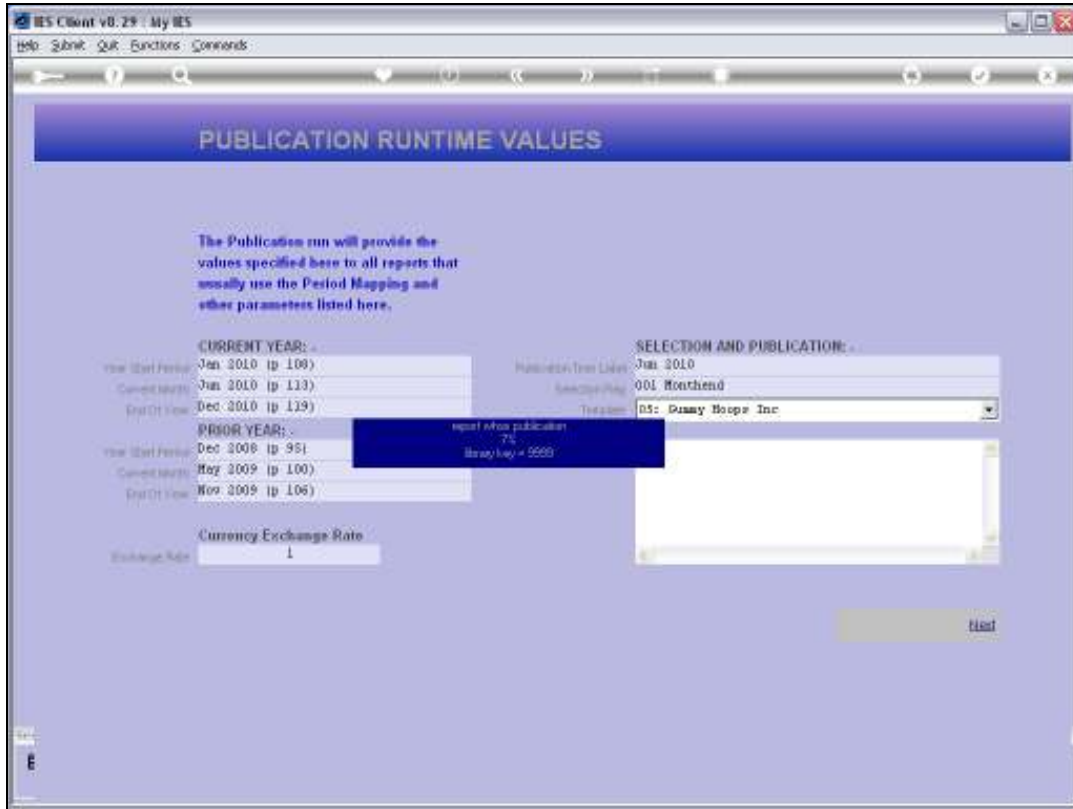
Slide 14

Slide notes: Publication Notes are optional.



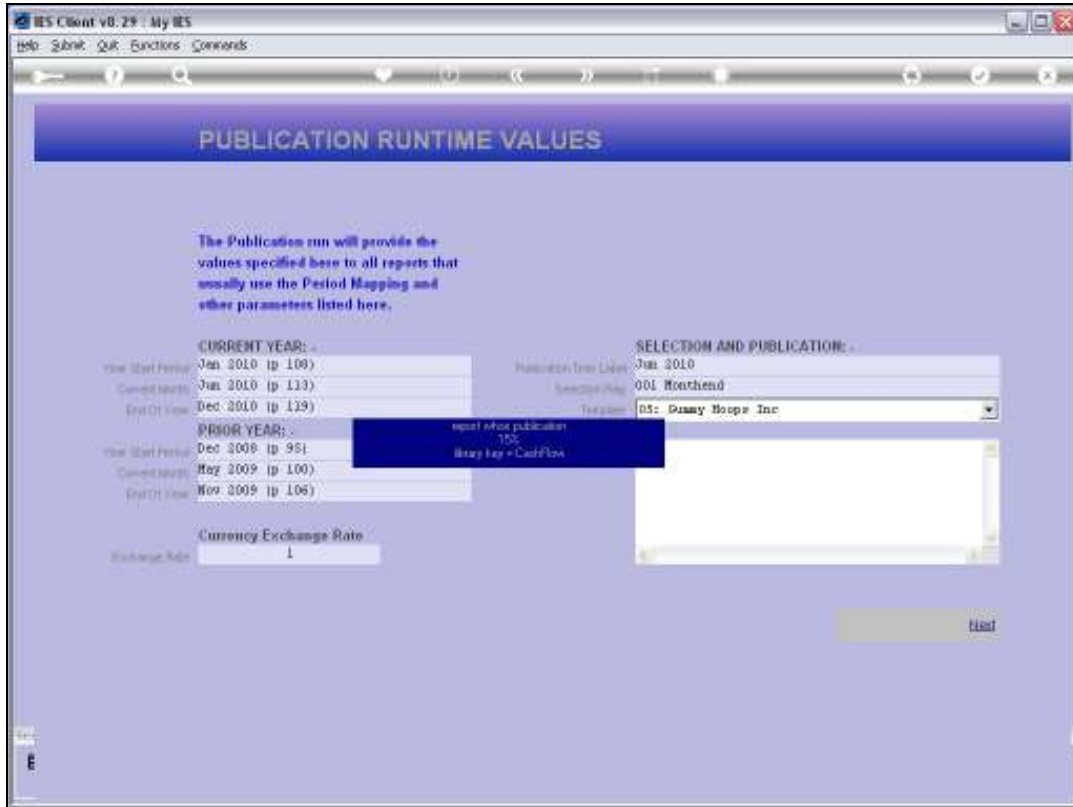
Slide 15

Slide notes:

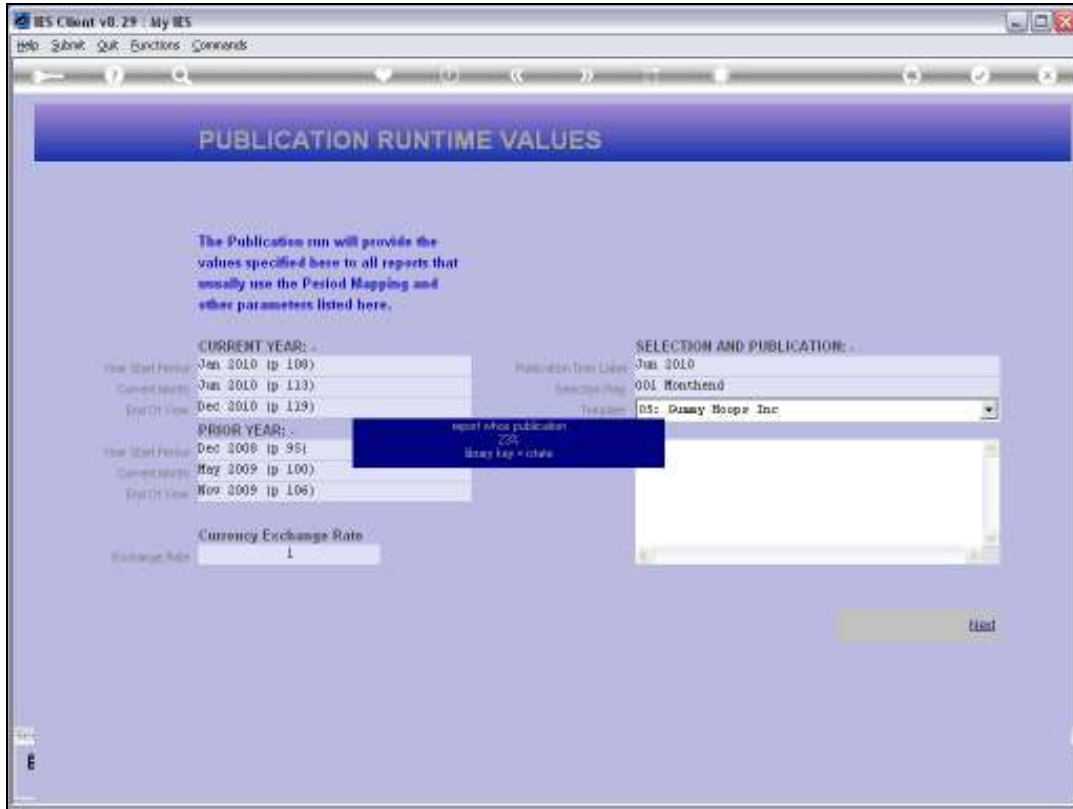


Slide 16

Slide notes:

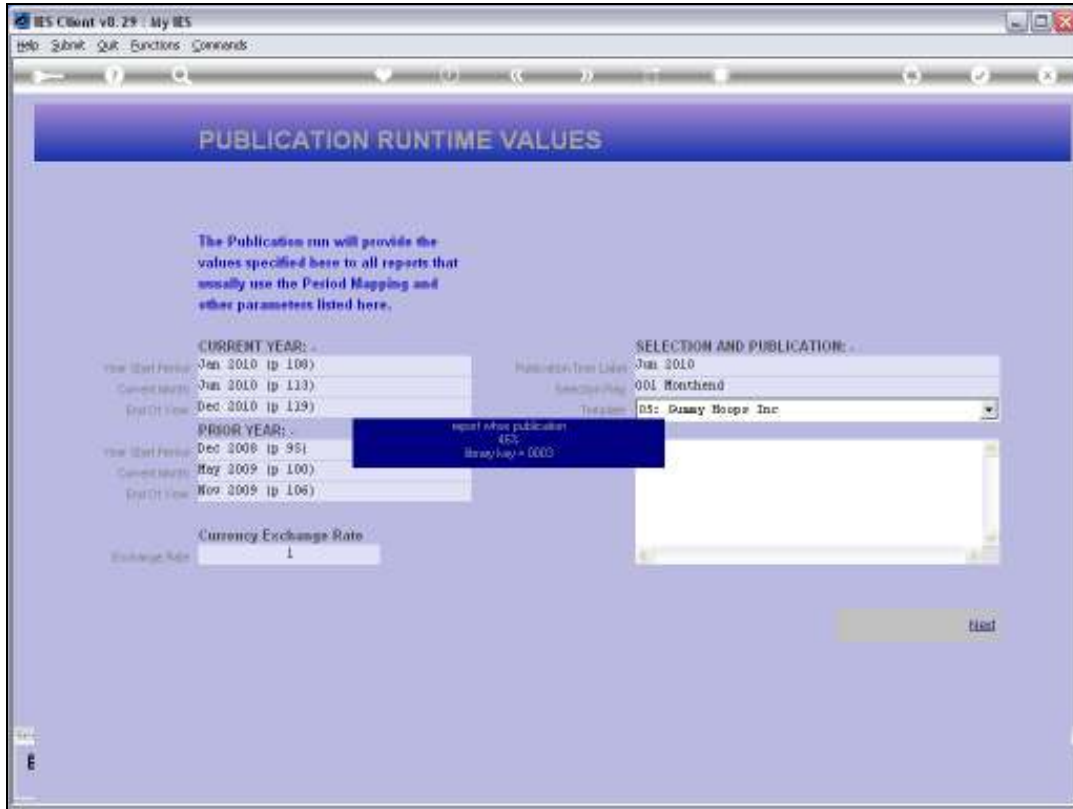


Slide 17
Slide notes:



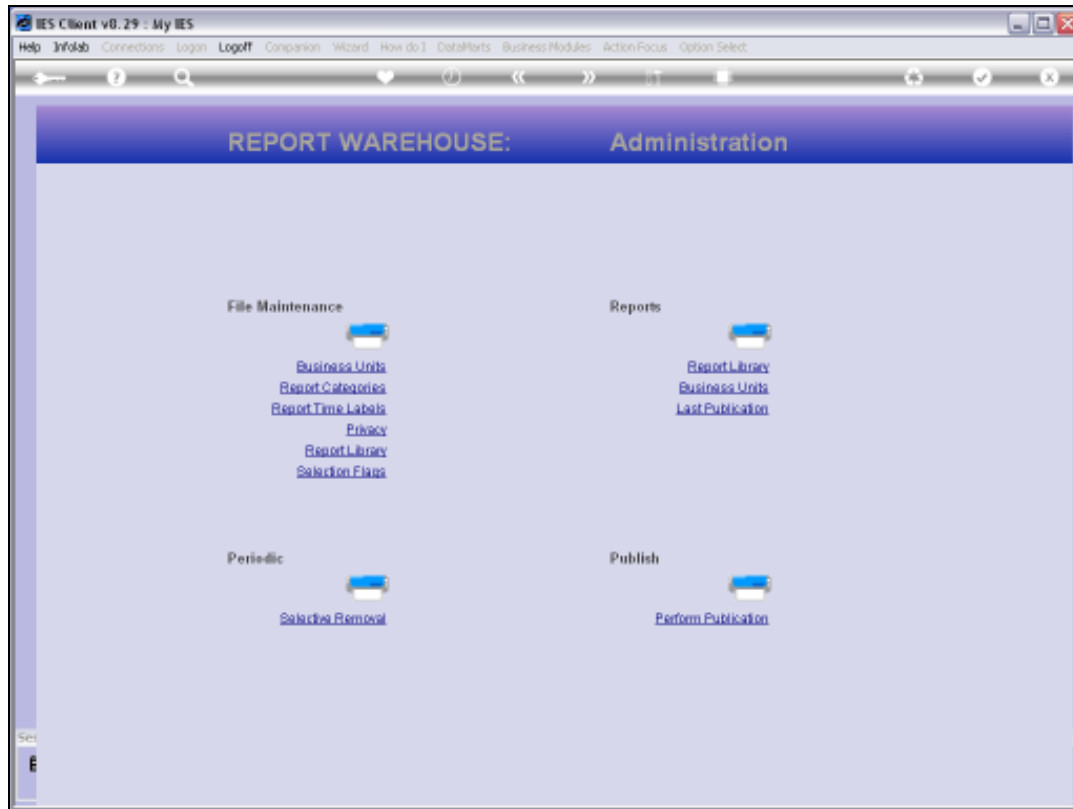
Slide 18

Slide notes:



Slide 19

Slide notes:



Slide 20

Slide notes: When the Publication Run concludes, then all selected Reports have been performed and published.