

Slide 1

Slide notes: With GL Writer, we can write Reports 1 by 1, and we can do it rather fast. But, there is even a method to automatically write dozens or hundreds of these Reports in 1 go. Before we show that function, we will use the 'Delete' option just to show that we have none of these GL Reports at the moment.

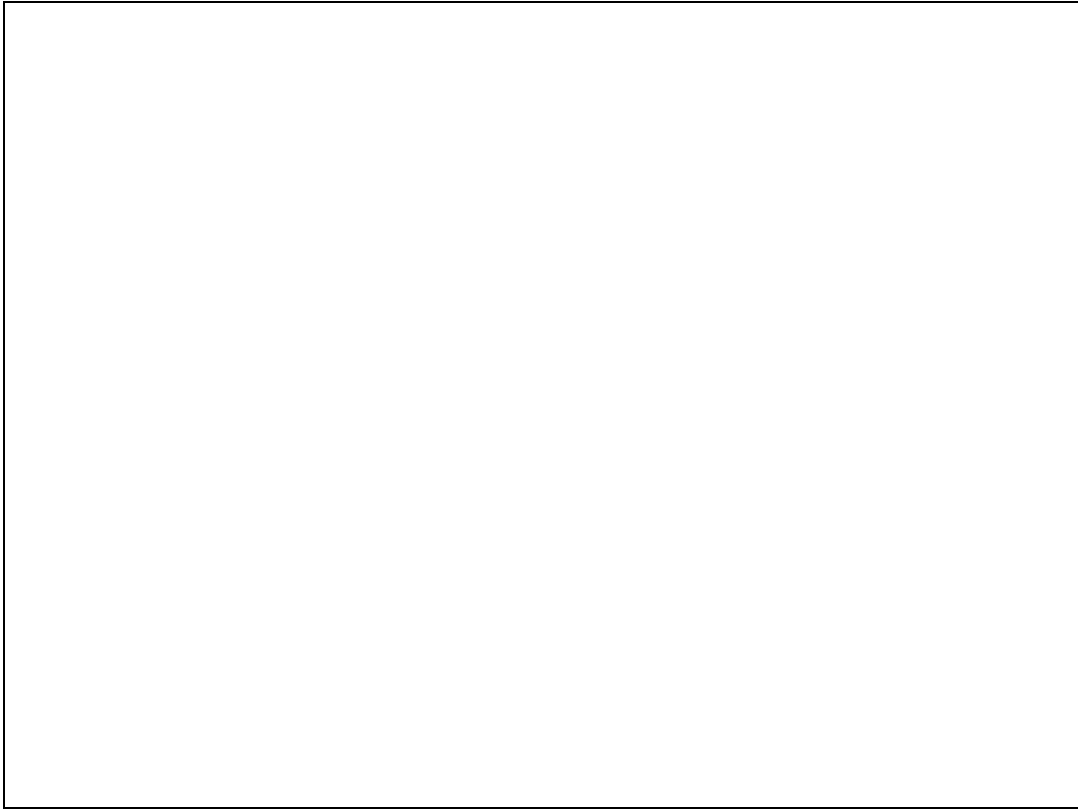


Slide 2  
Slide notes:



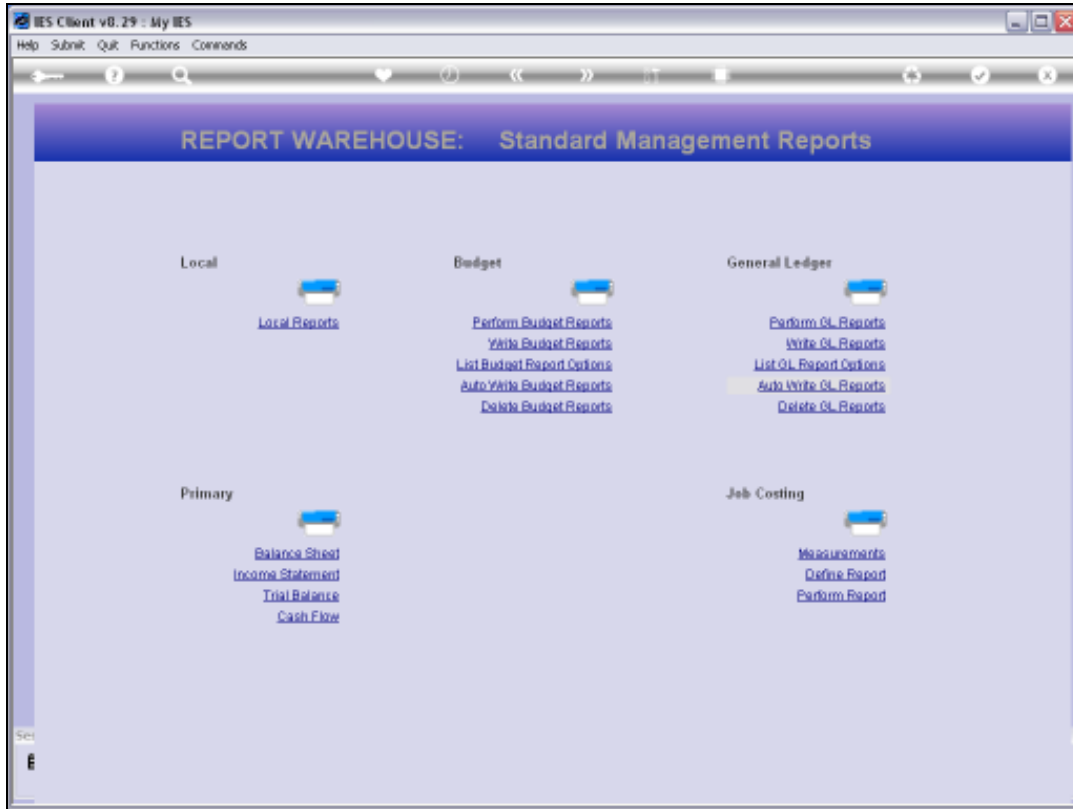
Slide 3

Slide notes: No reports.

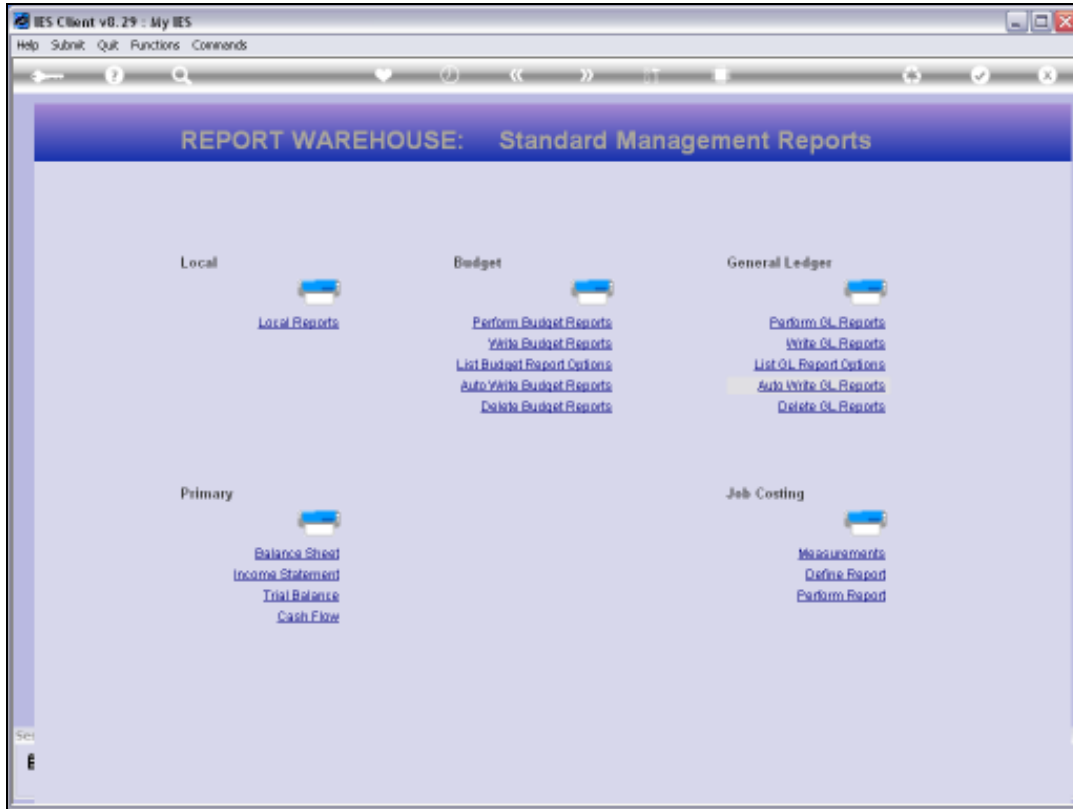


Slide 4

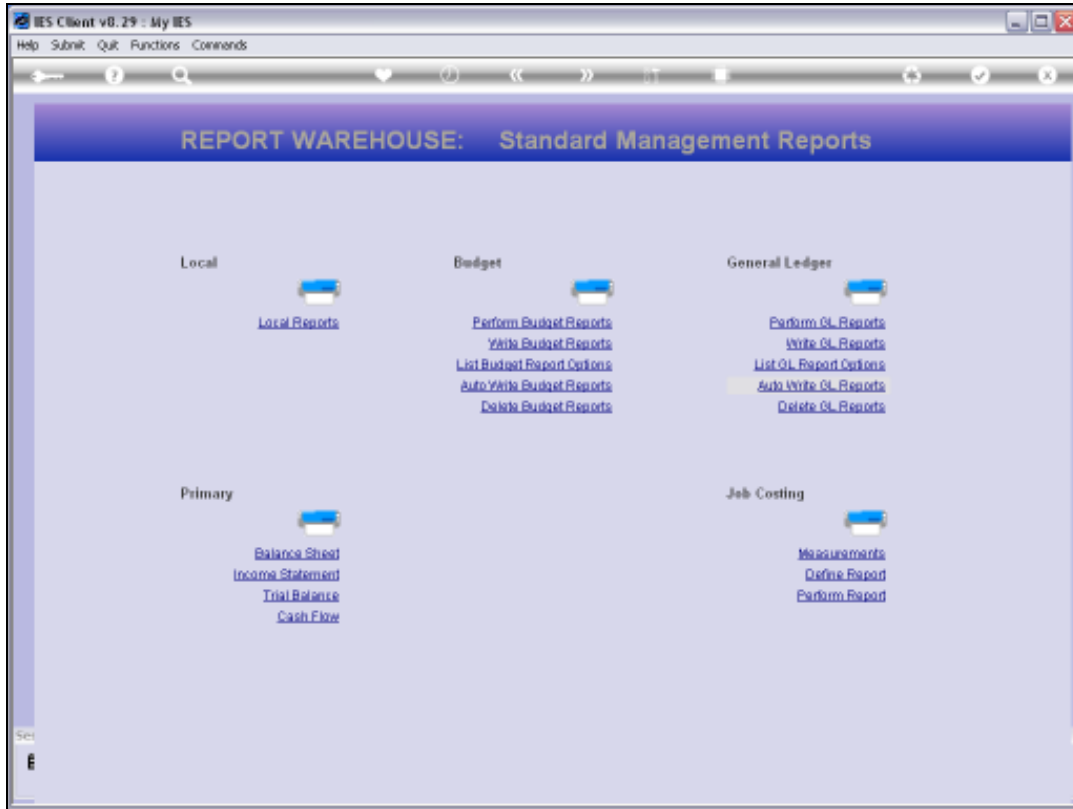
Slide notes: Next we will use the 'Auto Write' function.



Slide 5  
Slide notes:



Slide 6  
Slide notes:



Slide 7  
Slide notes:



## Slide 8

Slide notes: The Auto Write function can be used to generate many Departmental Reports in 1 go, and we can select any or just some of the Departments for a selected Report specification. As always, with GL Writer, we may choose Breaks.



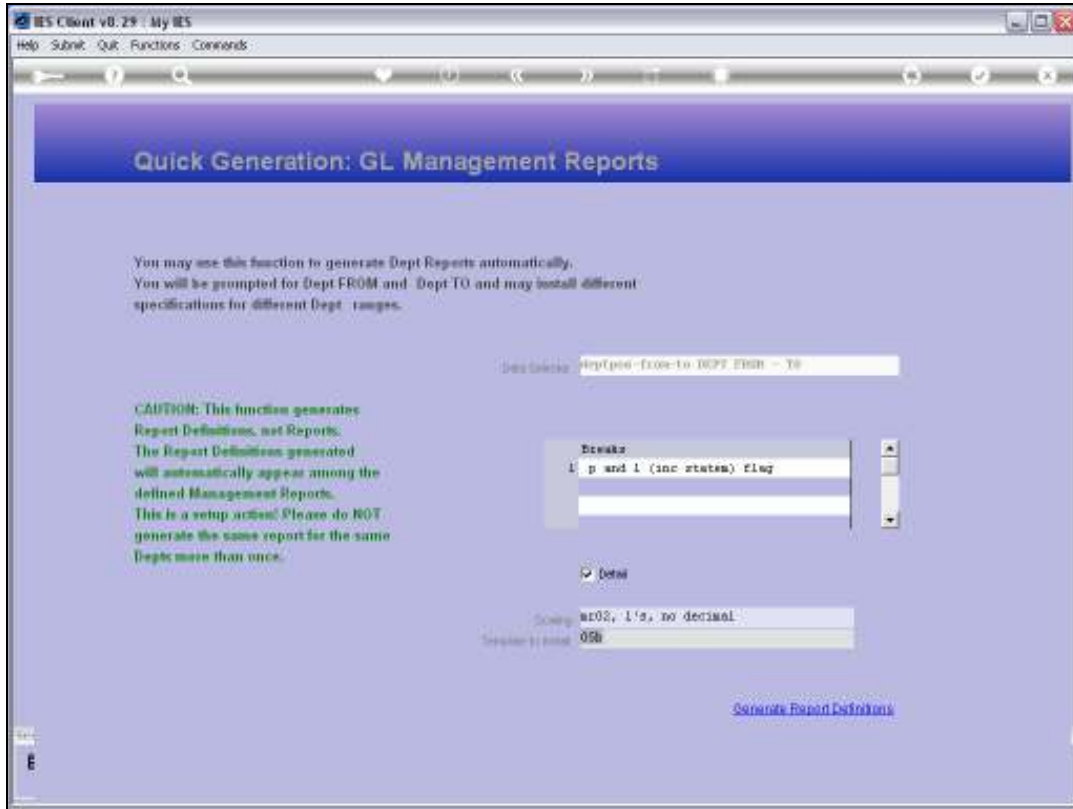


Slide 9  
Slide notes:

The screenshot shows a web application window titled "IES Client v8.29 - My IES". The main heading is "Quick Generation: GL Management Reports". Below the heading, there is a paragraph of text: "You may use this function to generate Dept Reports automatically. You will be prompted for Dept FROM and Dept TO and may install different specifications for different Dept ranges." To the left of the form, a "CAUTION" note states: "This function generates Report Definitions, not Reports. The Report Definitions generated will automatically appear among the defined Management Reports. This is a setup action! Please do NOT generate the same reports for the same Dept's more than once." The form includes a "Description" field with the value "MyDept-From-to-DEPT FROM - TO". A "Breaks" dropdown menu is set to "p and l (inc states) flag". A "Detail" checkbox is checked. The "Scaling" field is set to "W02%", and the "Template" field is set to "FIN (CON+ACT) + AMF BUD | COR, YTD". A "Generate Report Definition" button is located at the bottom right of the form.

### Slide 10

Slide notes: We can also choose between Detail or Summary Reports, and we can choose the desired number scaling as well as the Template to use for the Report layout.



Slide 11  
Slide notes:



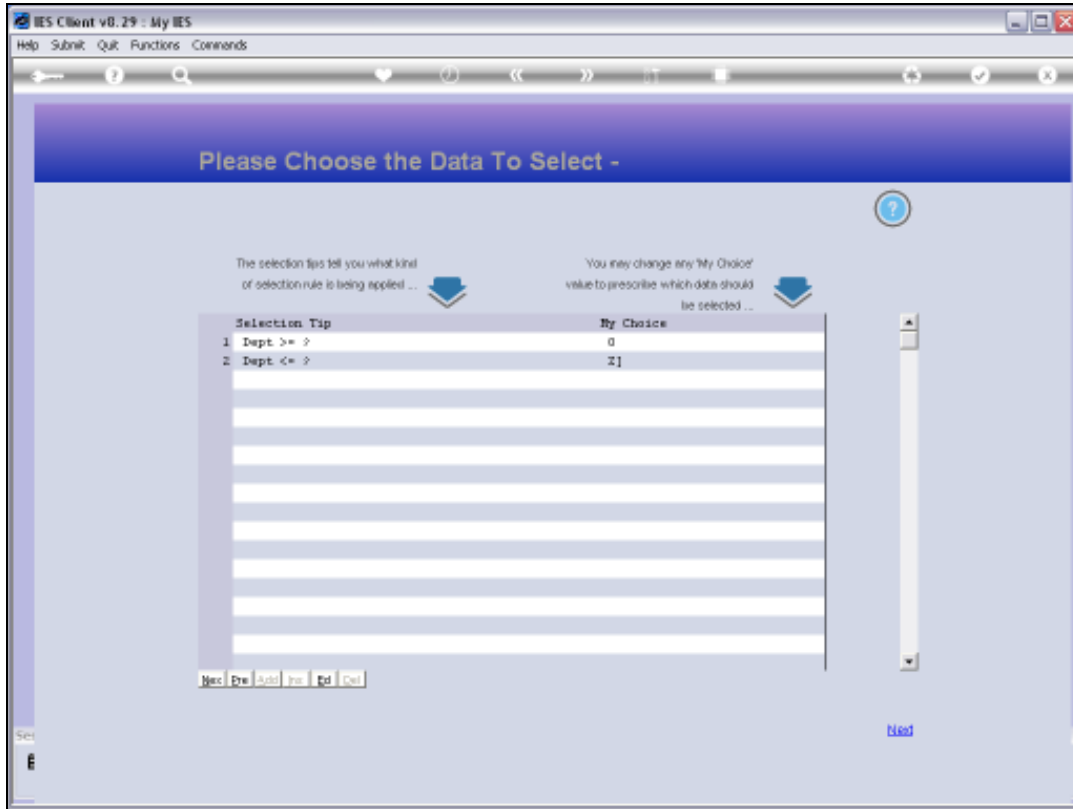
Slide 12

Slide notes:

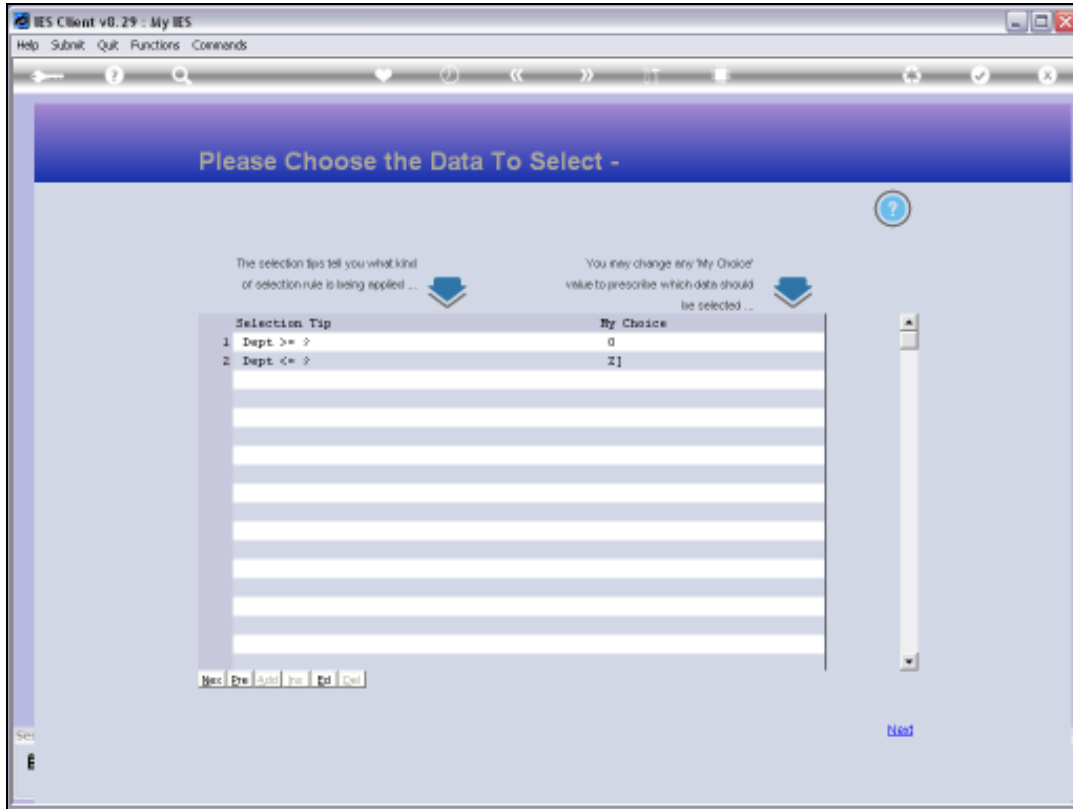


Slide 13

Slide notes: When we use the 'Generate' function, then we may select the Department Range, and for all selected Departments, the system will write a GL Management Report with the selected parameters.



Slide 14  
Slide notes:



Slide 15  
Slide notes:



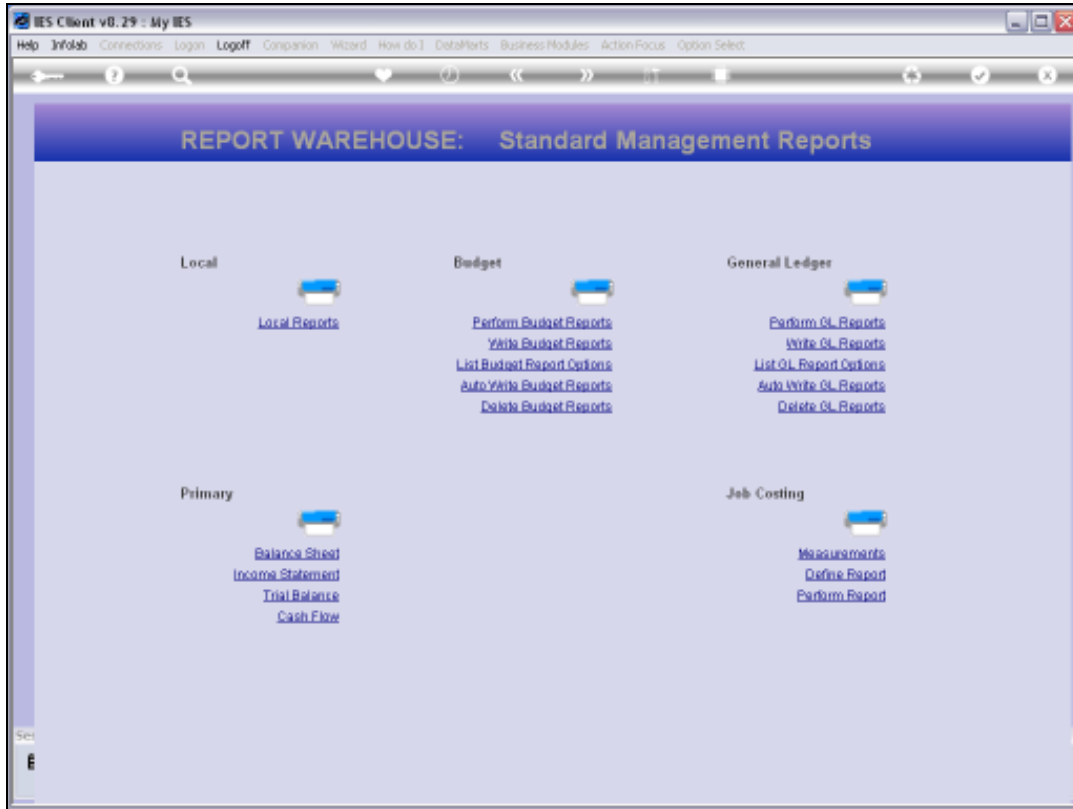
Slide 16

Slide notes: So we have just written 24 Reports, as easy as that.



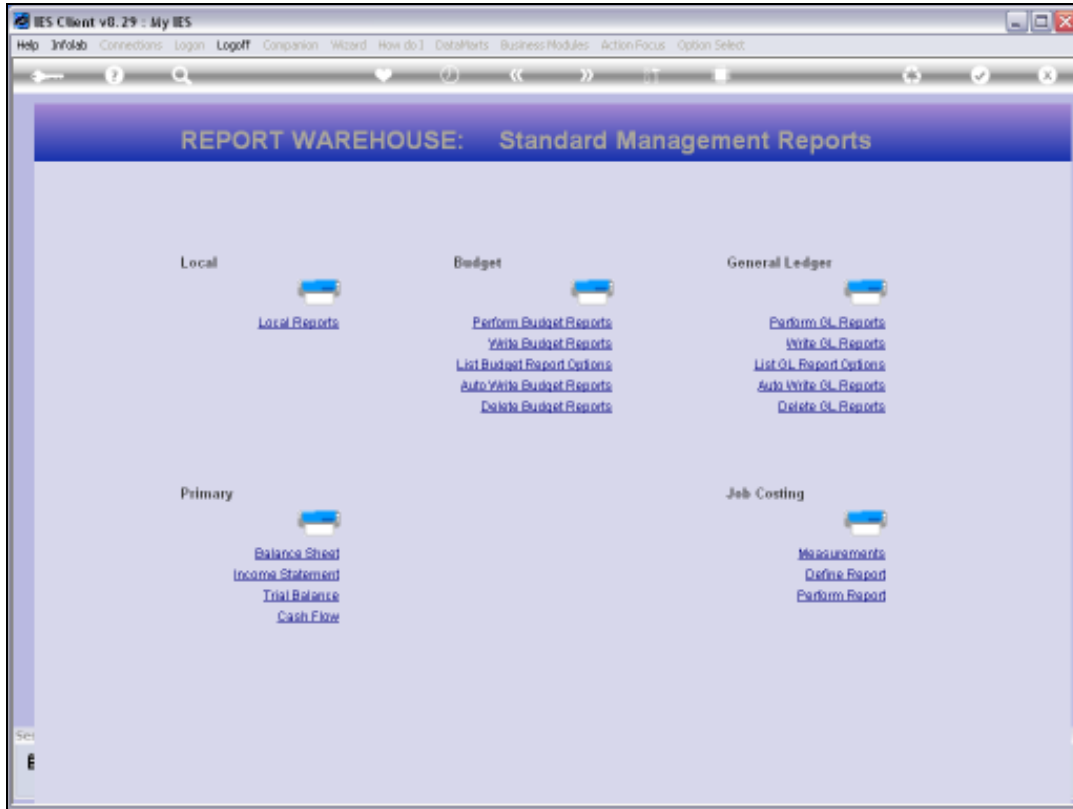


Slide 17  
Slide notes:



Slide 18

Slide notes:



Slide 19

Slide notes:

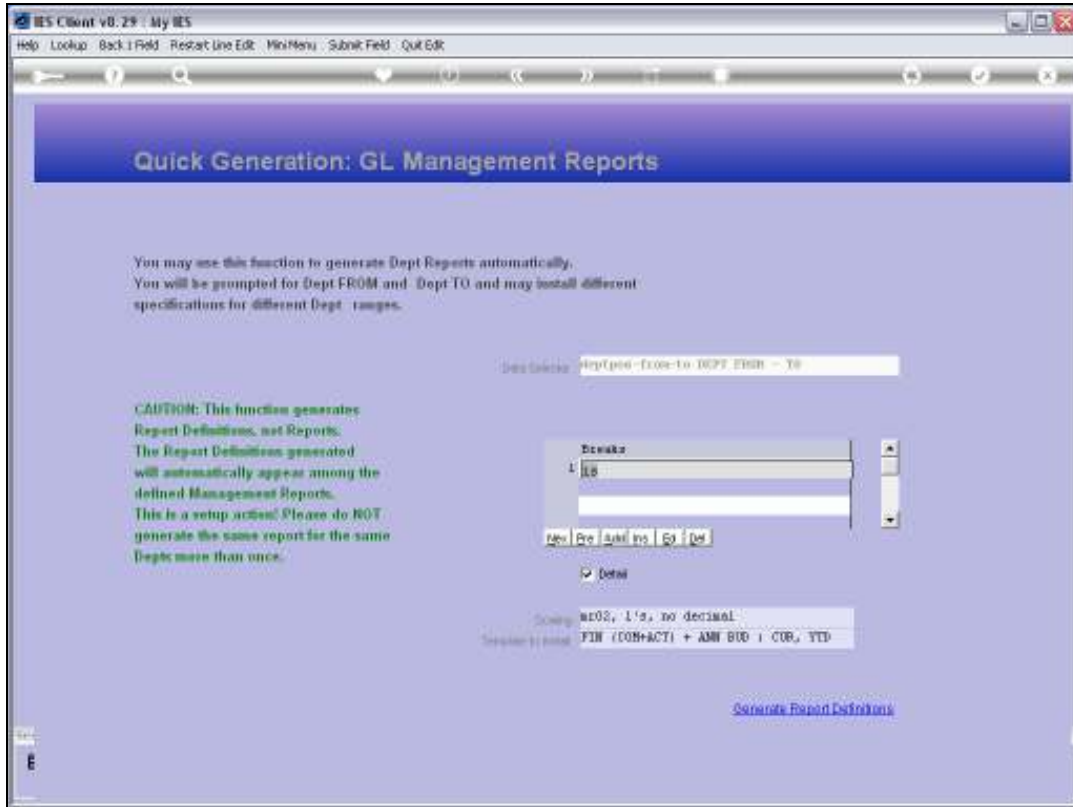




Slide 21  
Slide notes:



Slide 22  
Slide notes:

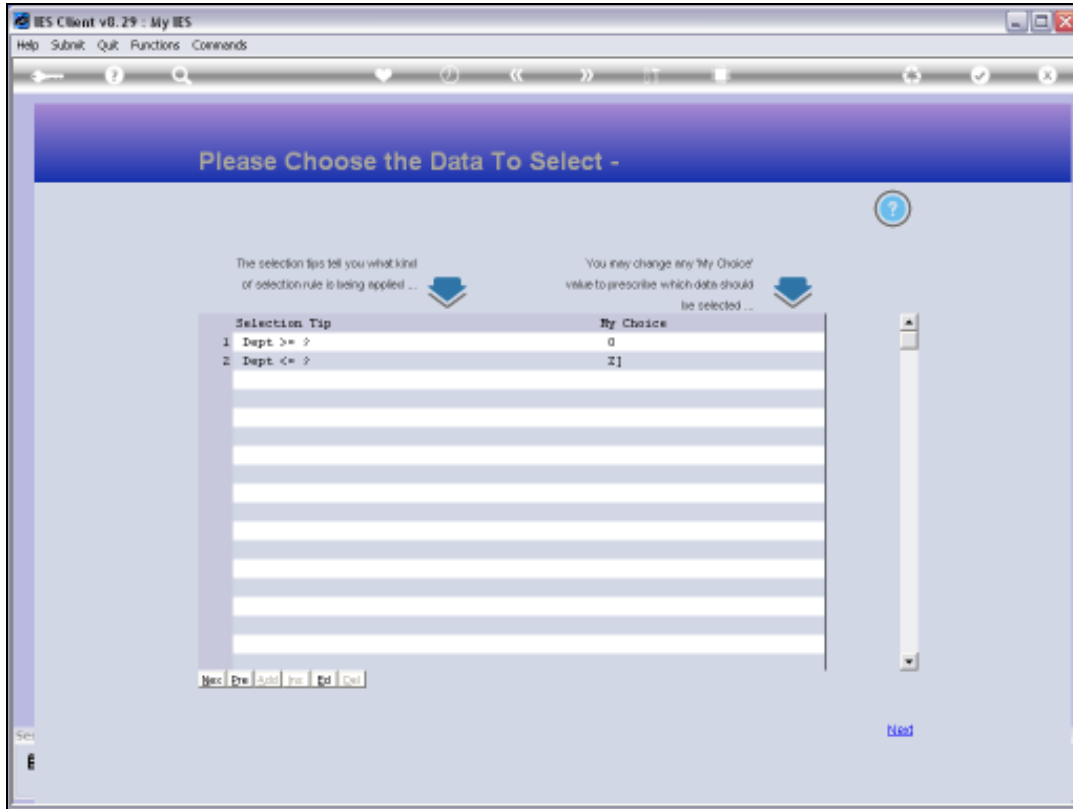


Slide 23  
Slide notes:

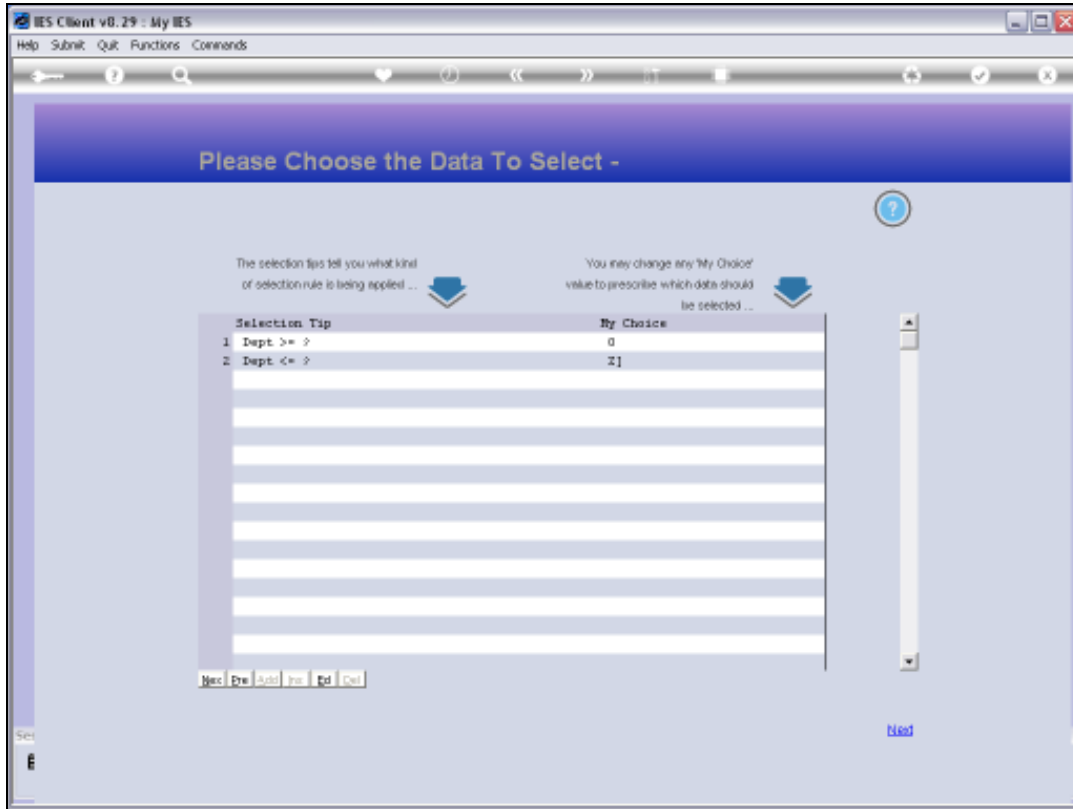


Slide 24  
Slide notes:





Slide 25  
Slide notes:



Slide 26  
Slide notes:



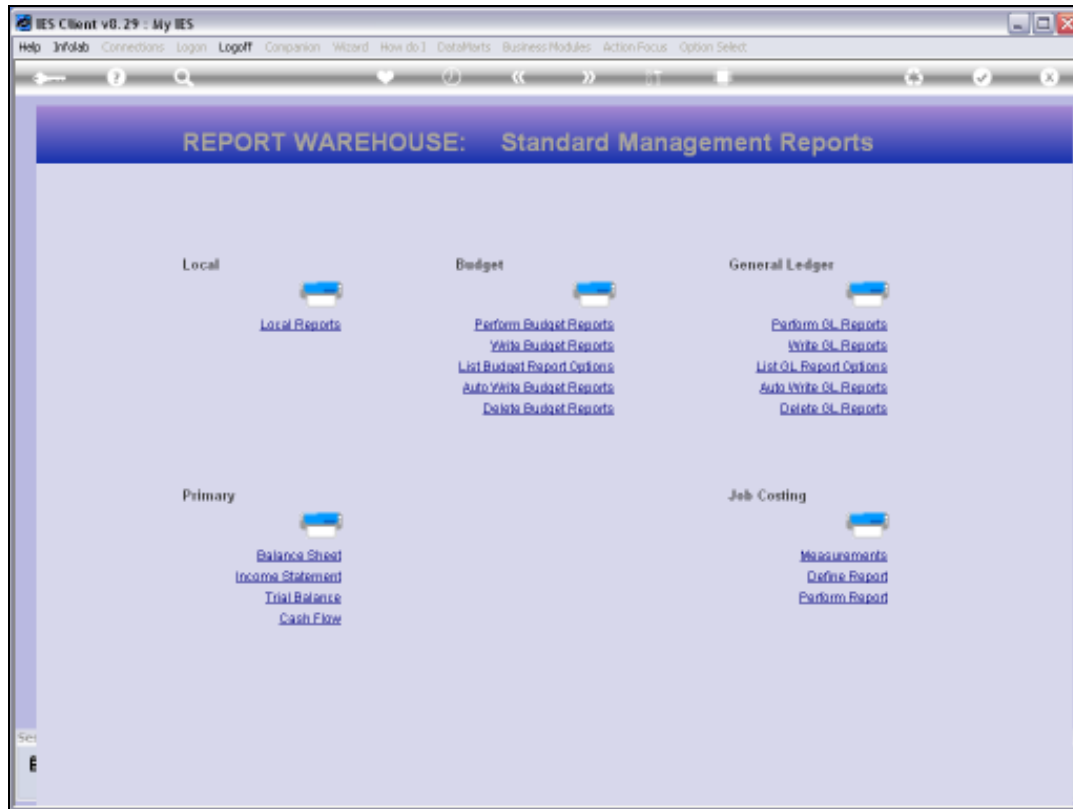


Slide 28

Slide notes:



Slide 29  
Slide notes:

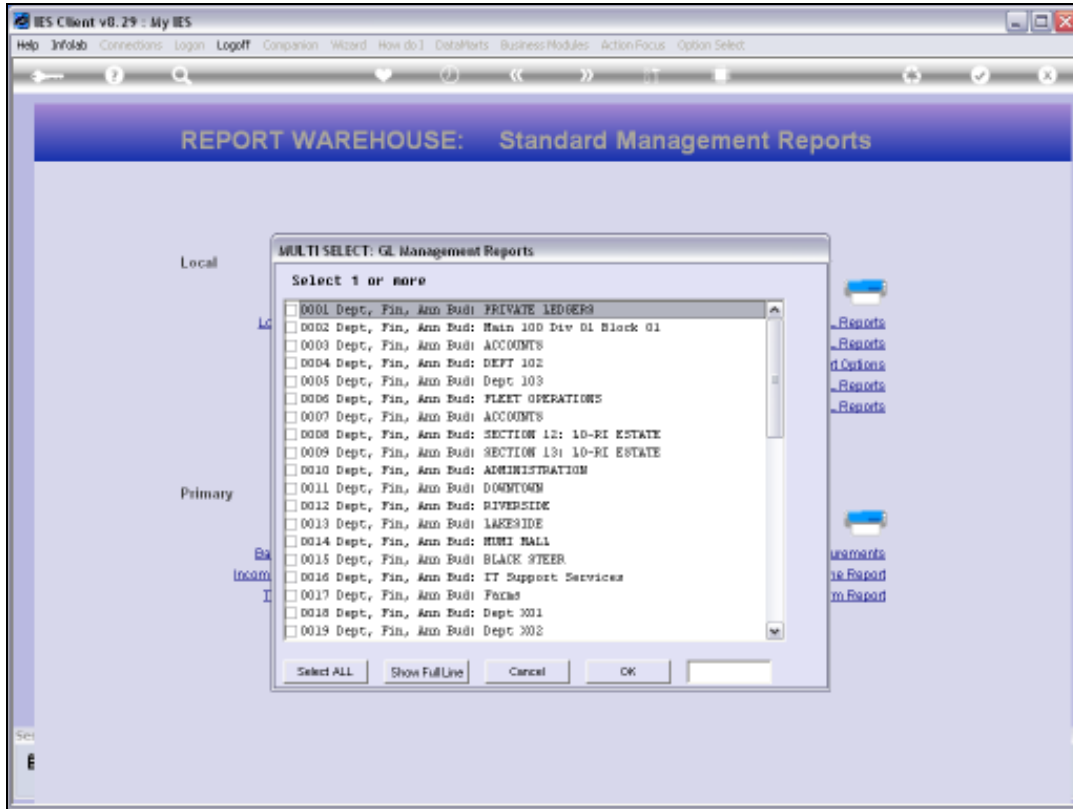


Slide 30

Slide notes: We can run a Report Listing of the GL Reports, or we can just use the Delete option now to see how many GL Reports will appear on the selection list.



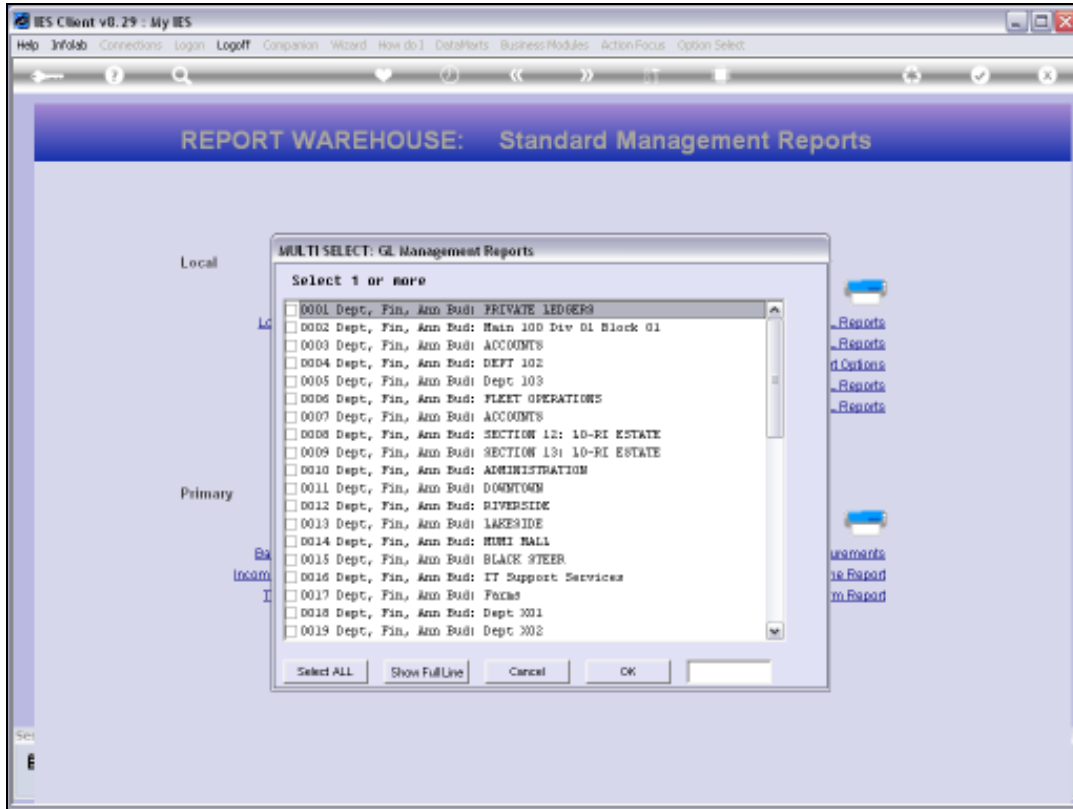
Slide 31  
Slide notes:



Slide 32

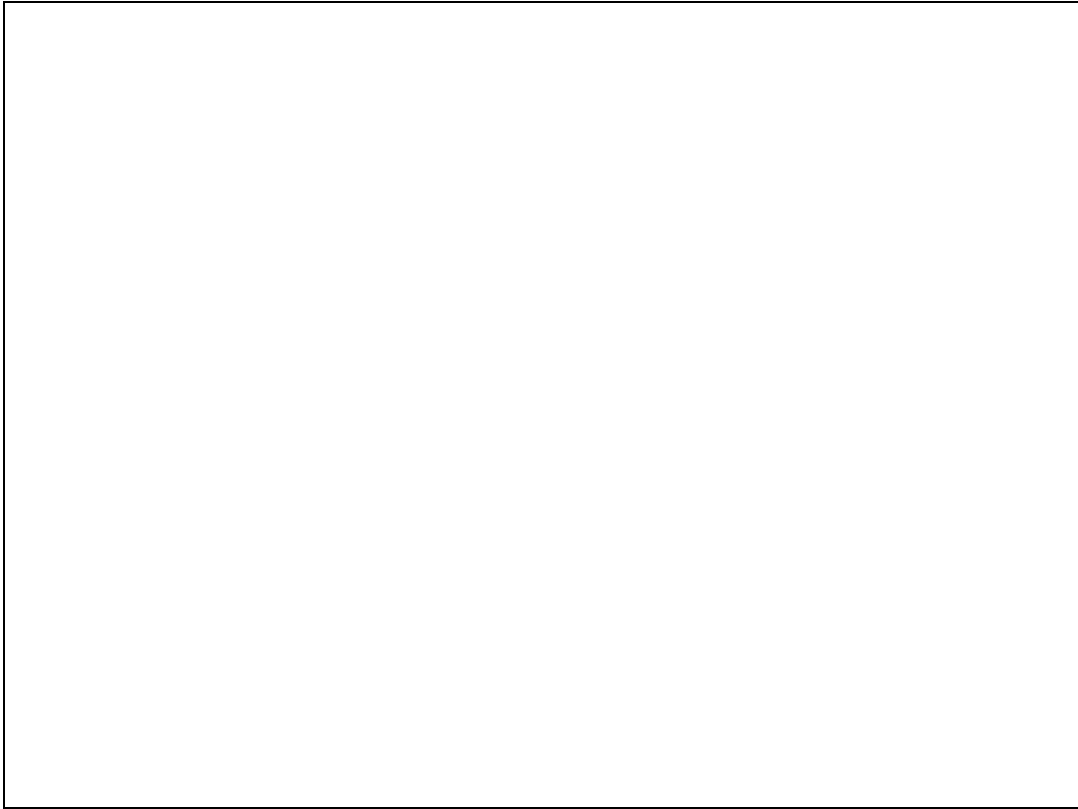
Slide notes:





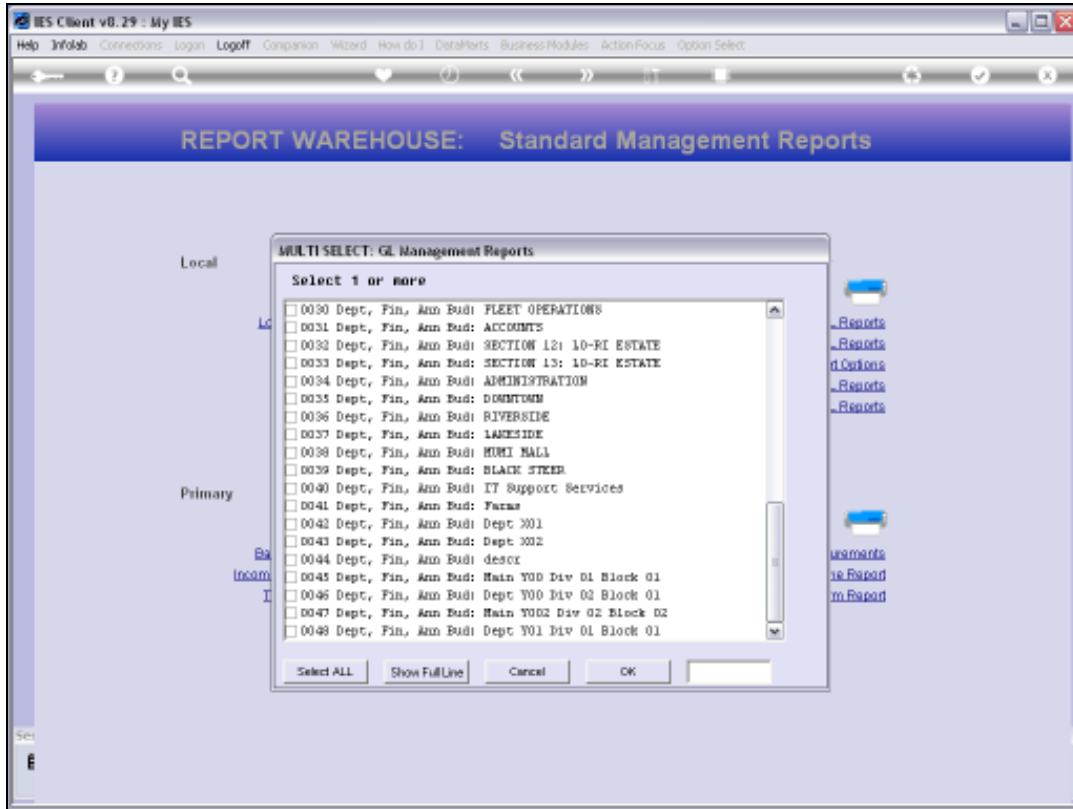
Slide 33

Slide notes:



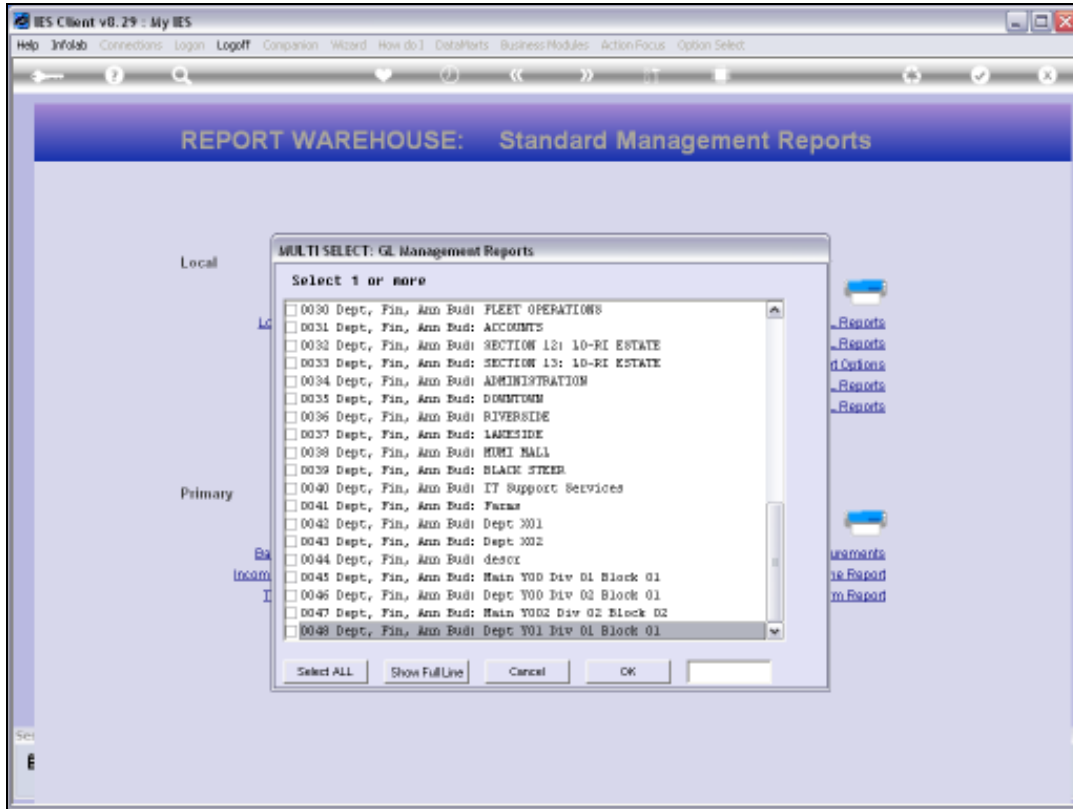
Slide 34

Slide notes:



Slide 35

Slide notes: And as we can see, there are 48 GL Reports on the list, as expected. So the 'Auto Write' is a powerful function to very quickly generate the various Departmental GL Management Reports that we need.



Slide 36

Slide notes:



Slide 37  
Slide notes: