



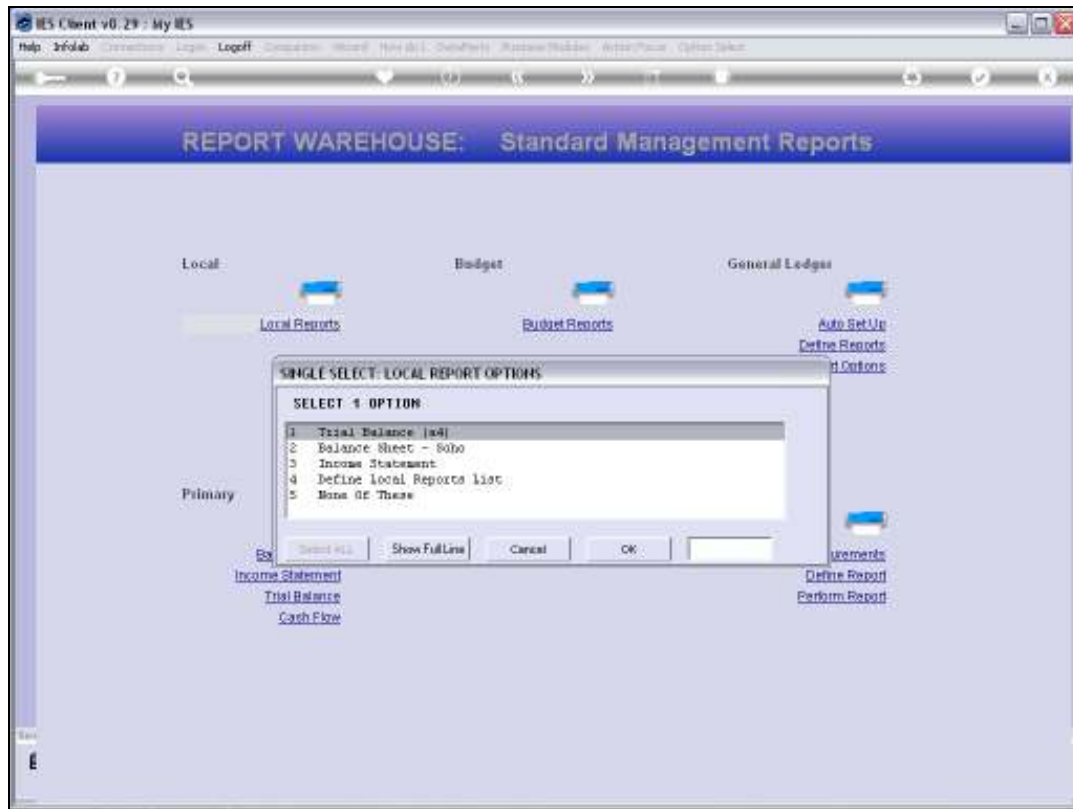
## Slide 1

Slide notes: The Balance Sheet and Income Statement Reports are potentially unique at any site, and we can define our models of choice at the Local Reports, at the Management Report section of the Warehouse.



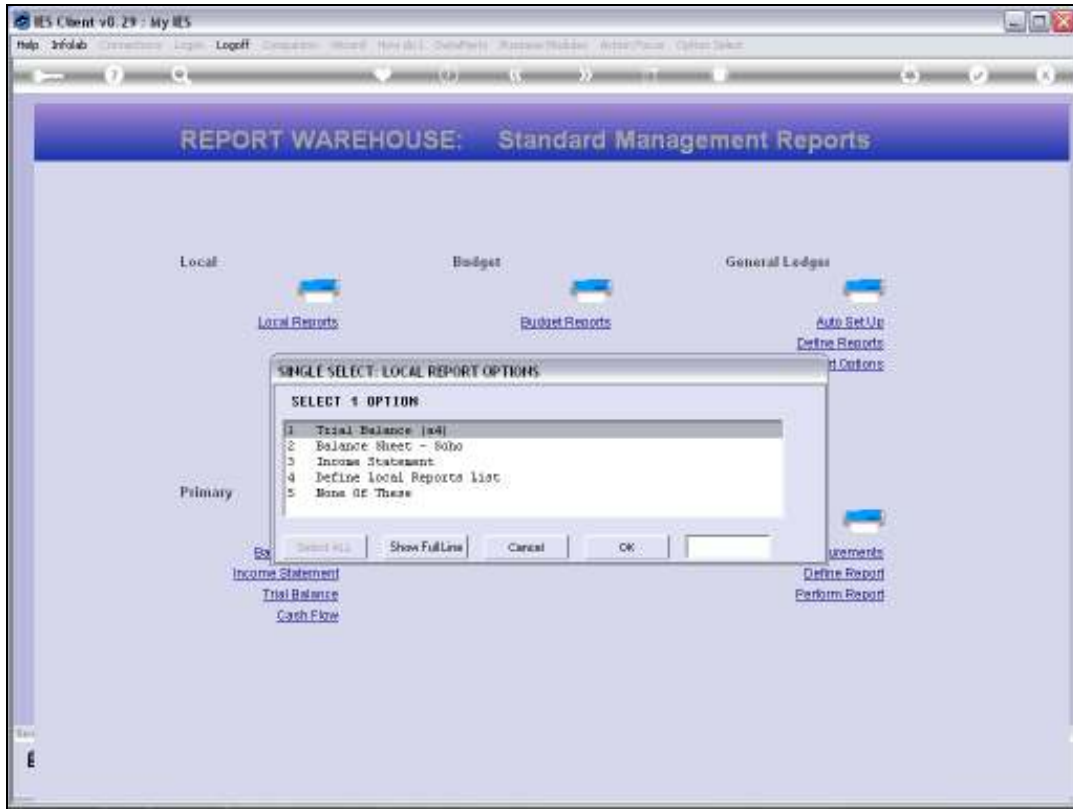
Slide 2

Slide notes: To do this, we must have access to the 'Local Reports' option.



### Slide 3

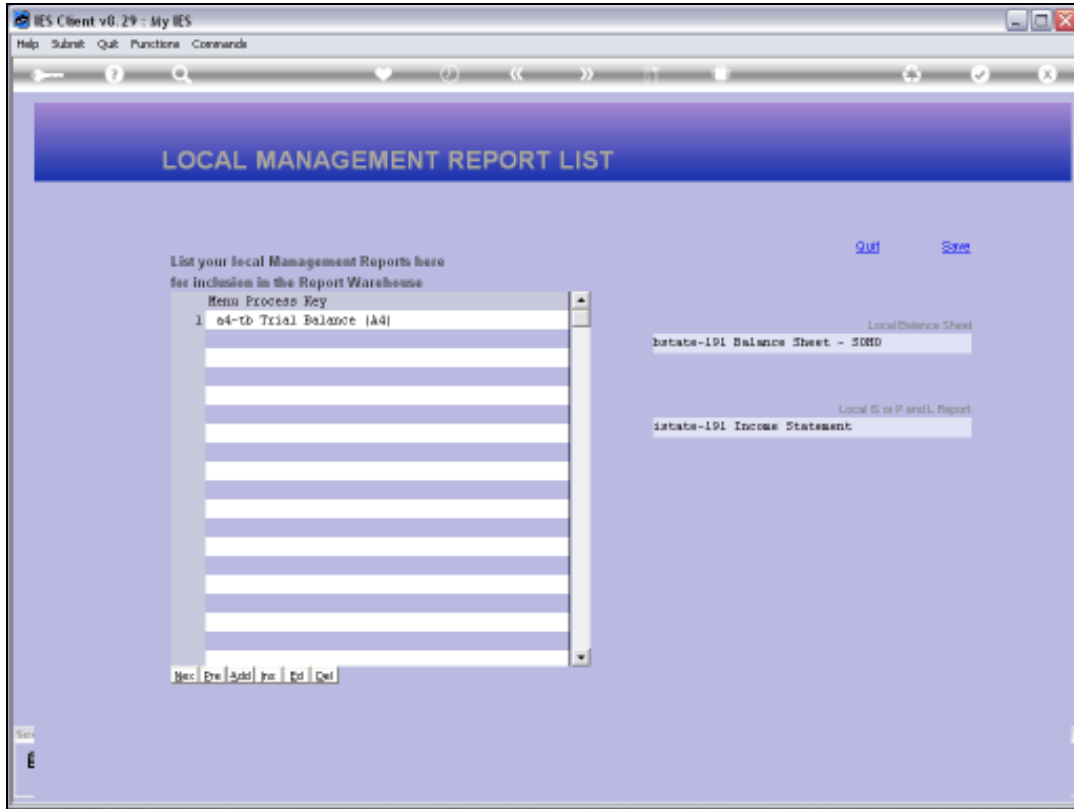
Slide notes: When the Local Reports option is selected, it will include all Local Management Reports that are defined and made available here, BUT the option to actually define these Reports will ONLY be on the list if we are a Systems Administrator User.



Slide 4  
Slide notes:

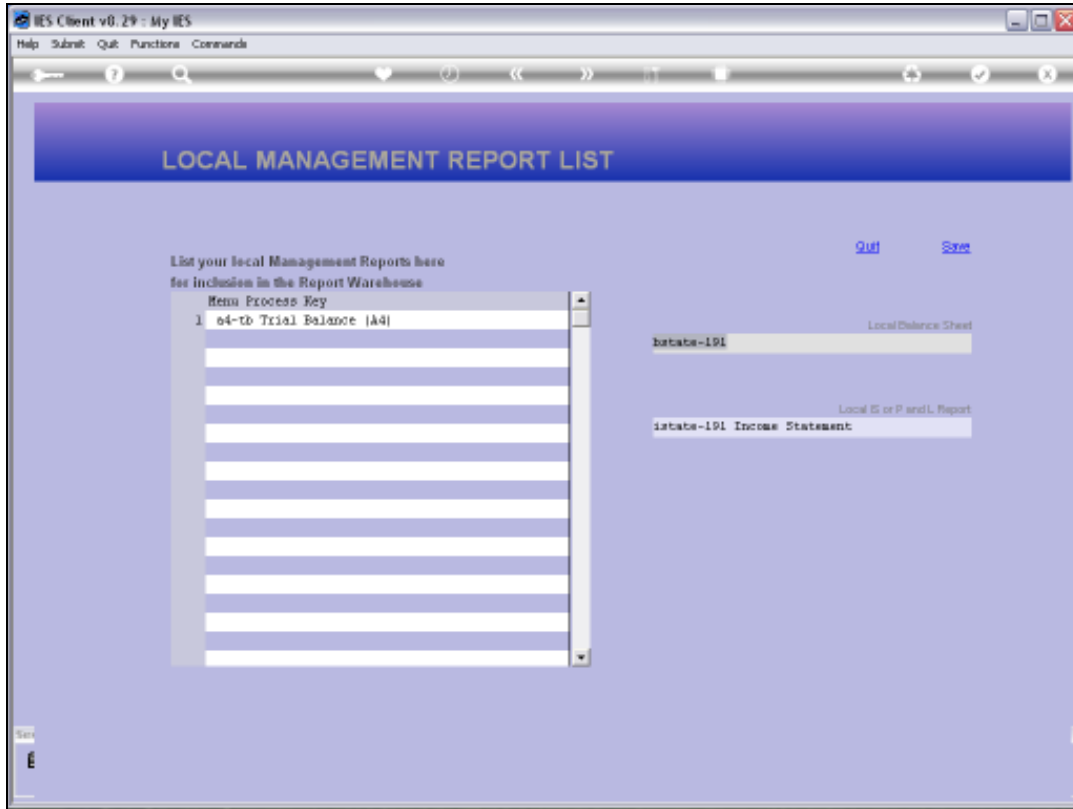


Slide 5  
Slide notes:

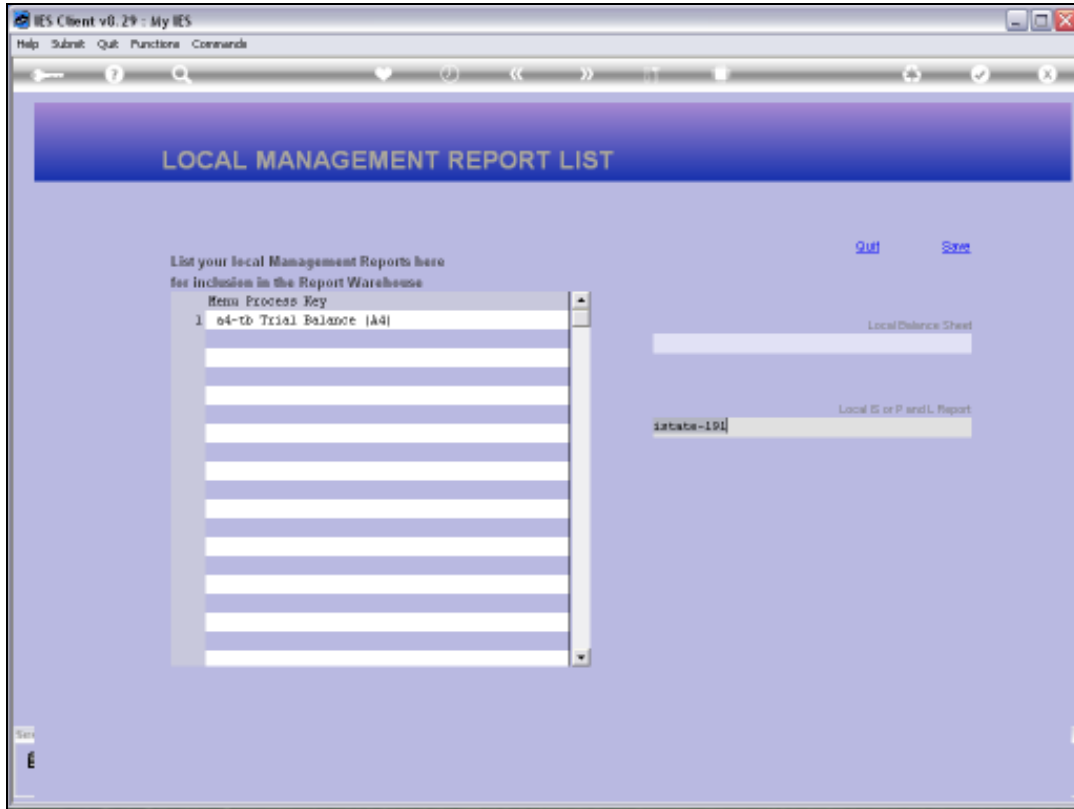


Slide 6

Slide notes: There are special slots for Balance Sheet and Income Statement Reports. If we list nothing here, then the system will use the system default Reports for these options.

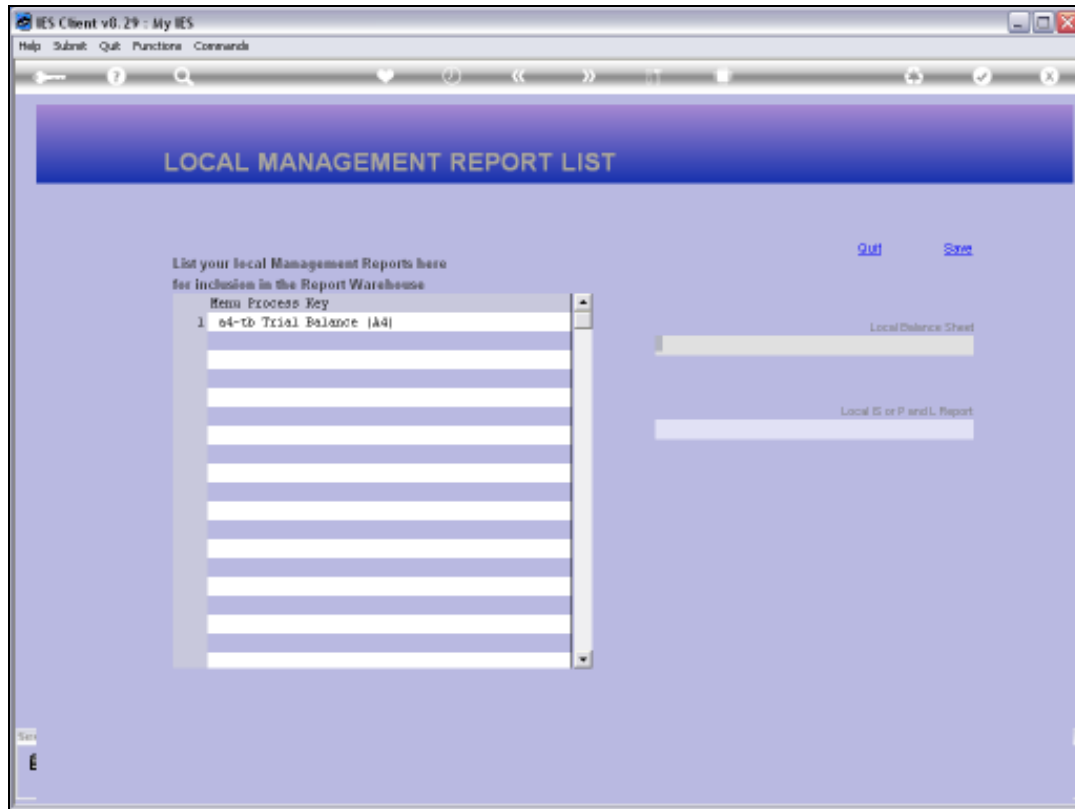


Slide 7  
Slide notes:



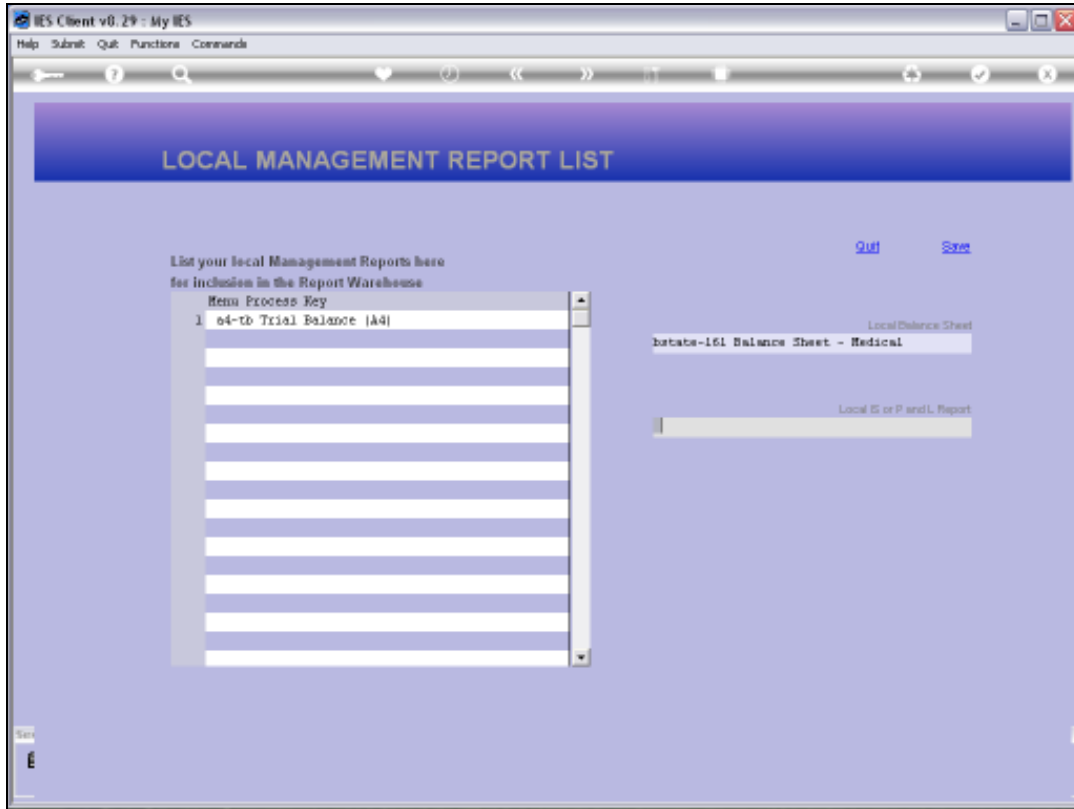
Slide 8  
Slide notes:





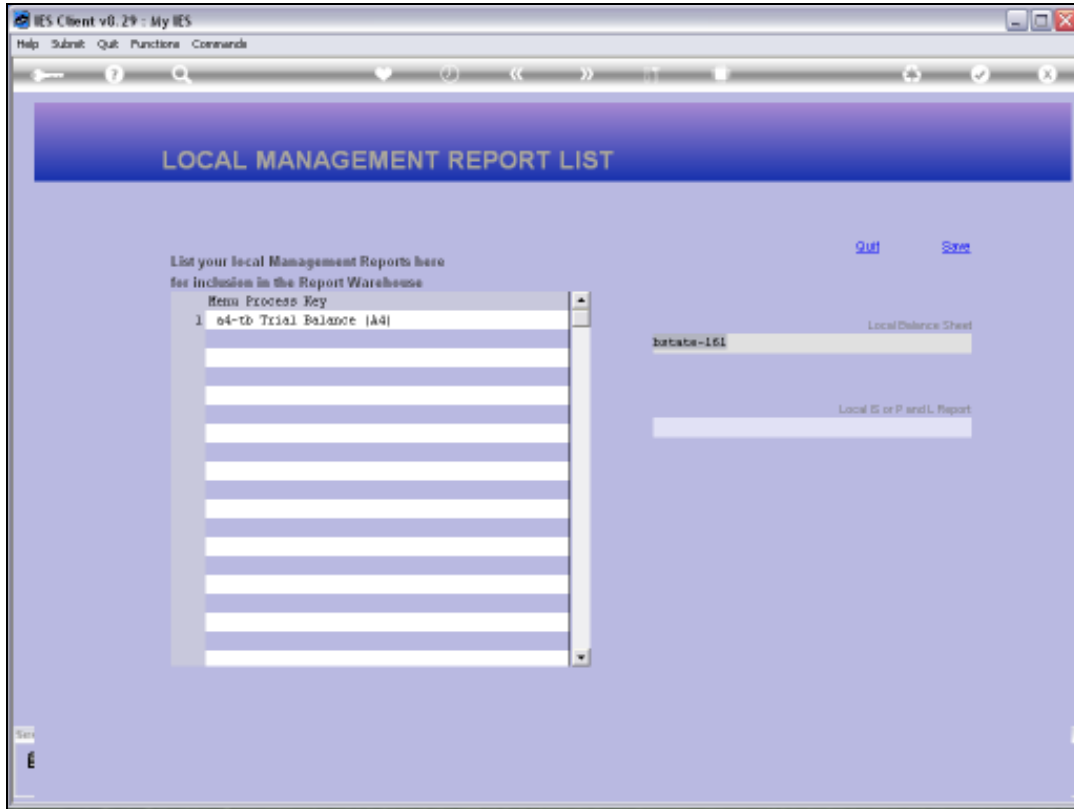
## Slide 9

Slide notes: There are multiple Balance Sheet and Income Statement options available in the system, but we can also develop our very own models for these important Reports, and we usually do that with Document Writer. And then we define these local versions in the Process Library and list them here.



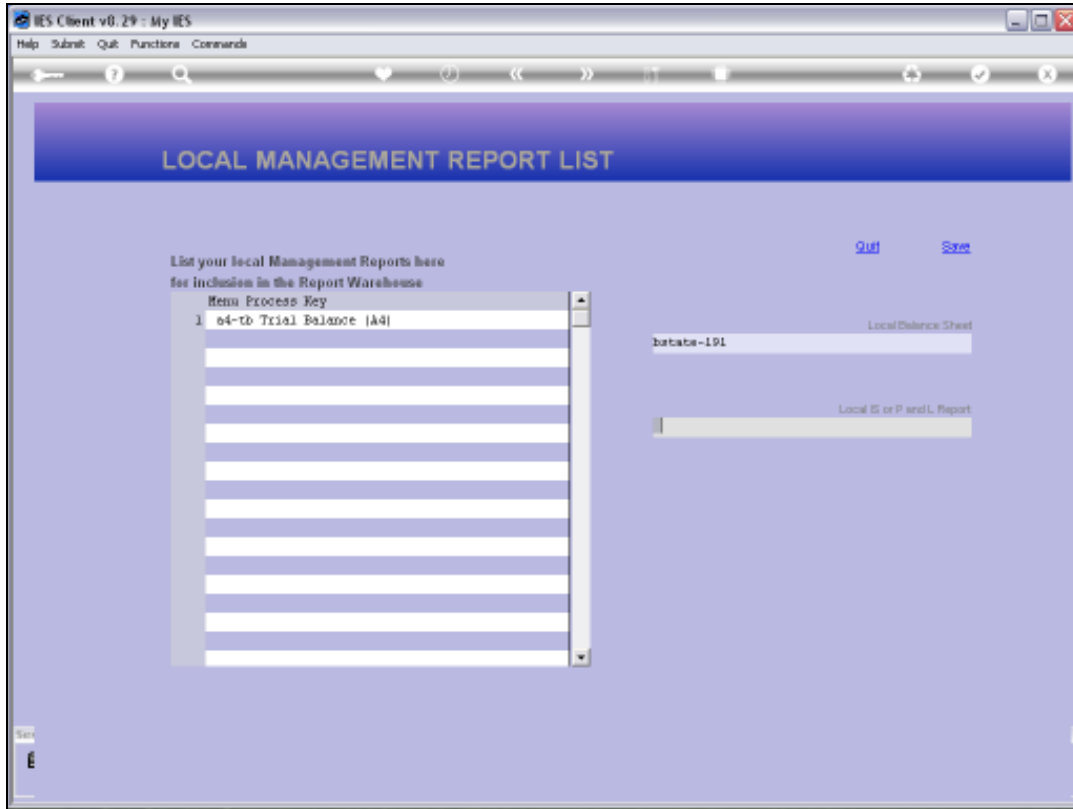
Slide 10

Slide notes:

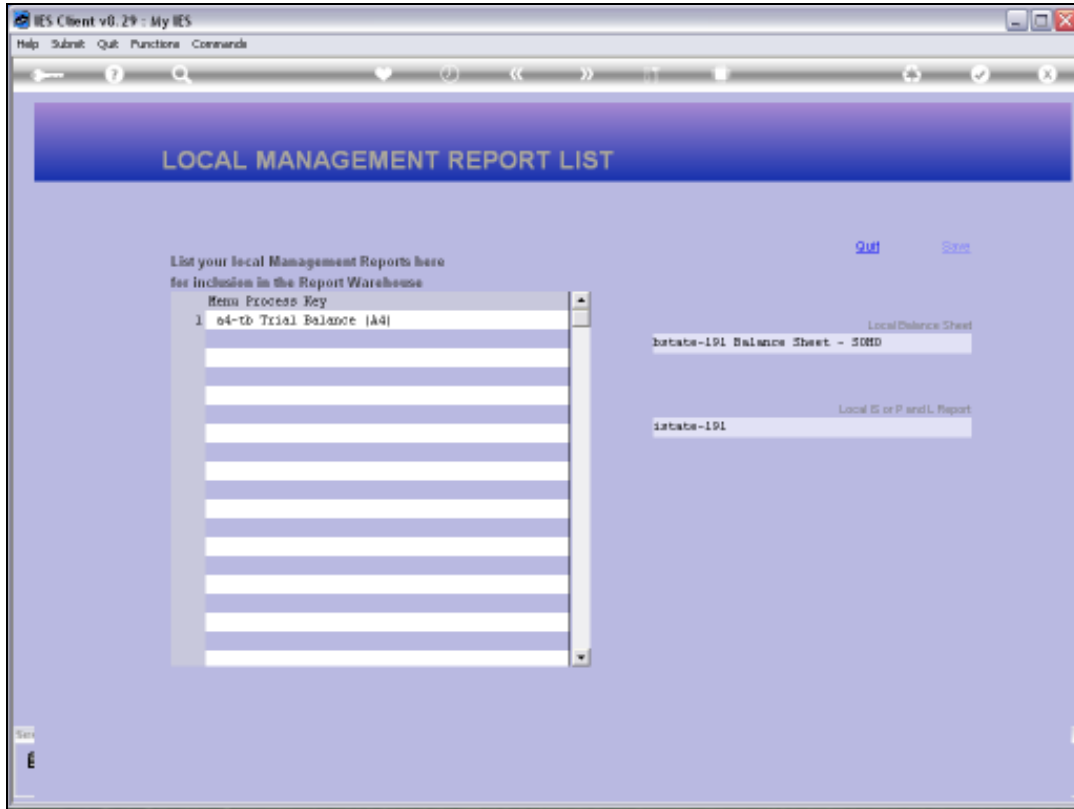


Slide 11

Slide notes:

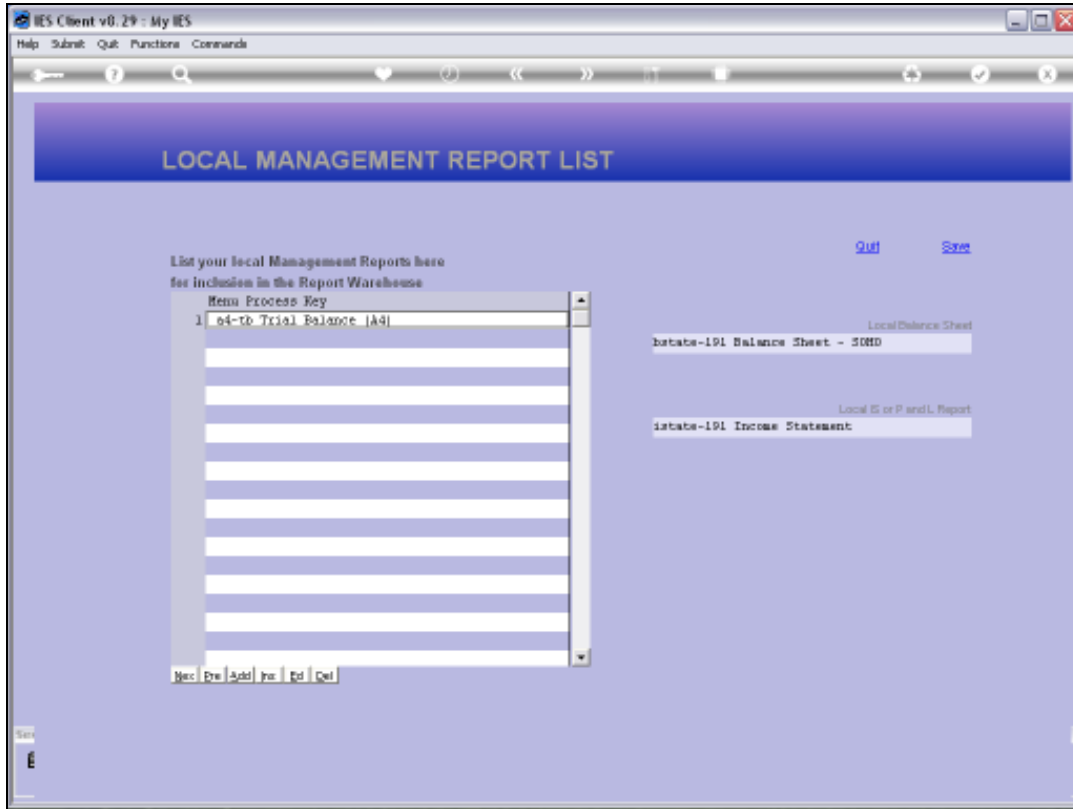


Slide 12  
Slide notes:



Slide 13

Slide notes:



Slide 14

Slide notes: Once we have listed our preferred versions for Balance Sheet and Income Statement Reports, the system will use these options whenever a Balance Sheet or Income Statement report is produced from any of the various options to do so.



Slide 15

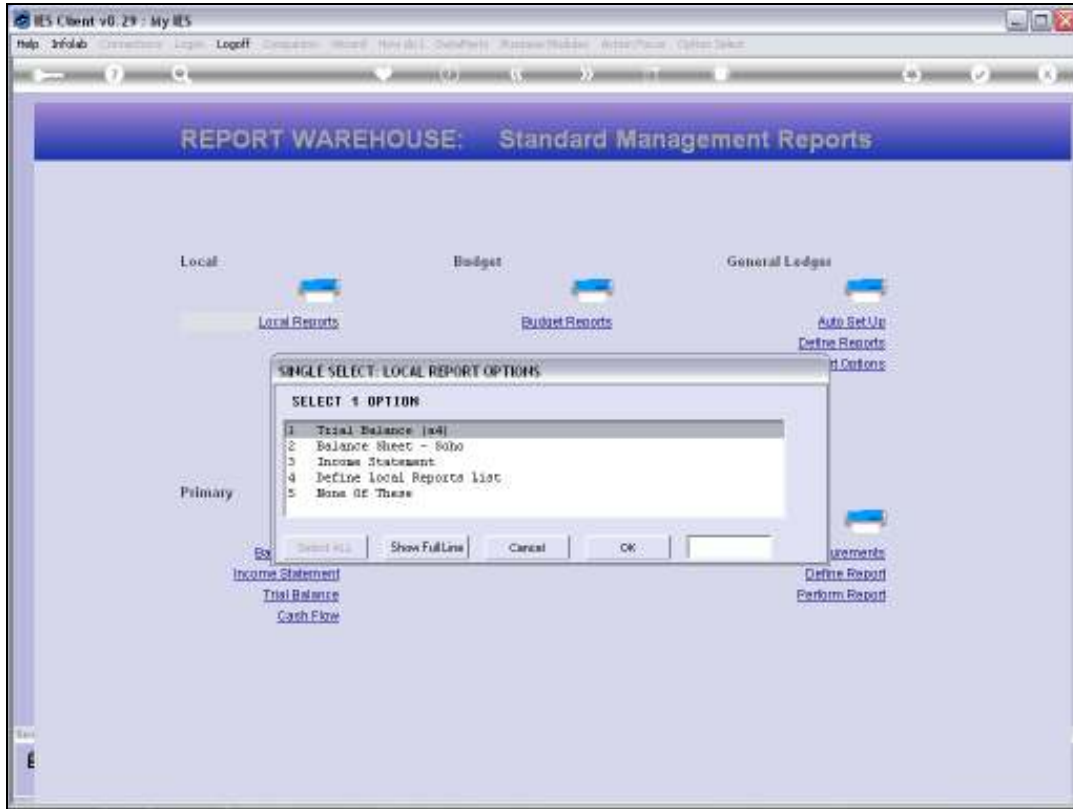
Slide notes:



Slide 16

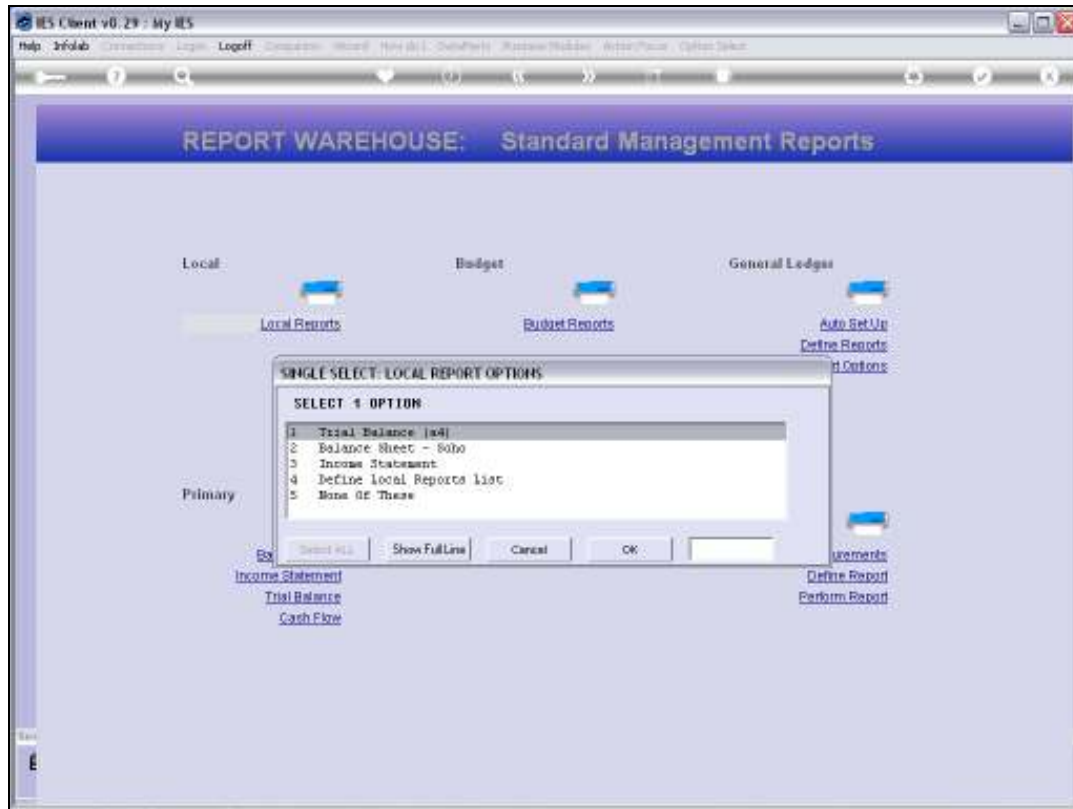
Slide notes:





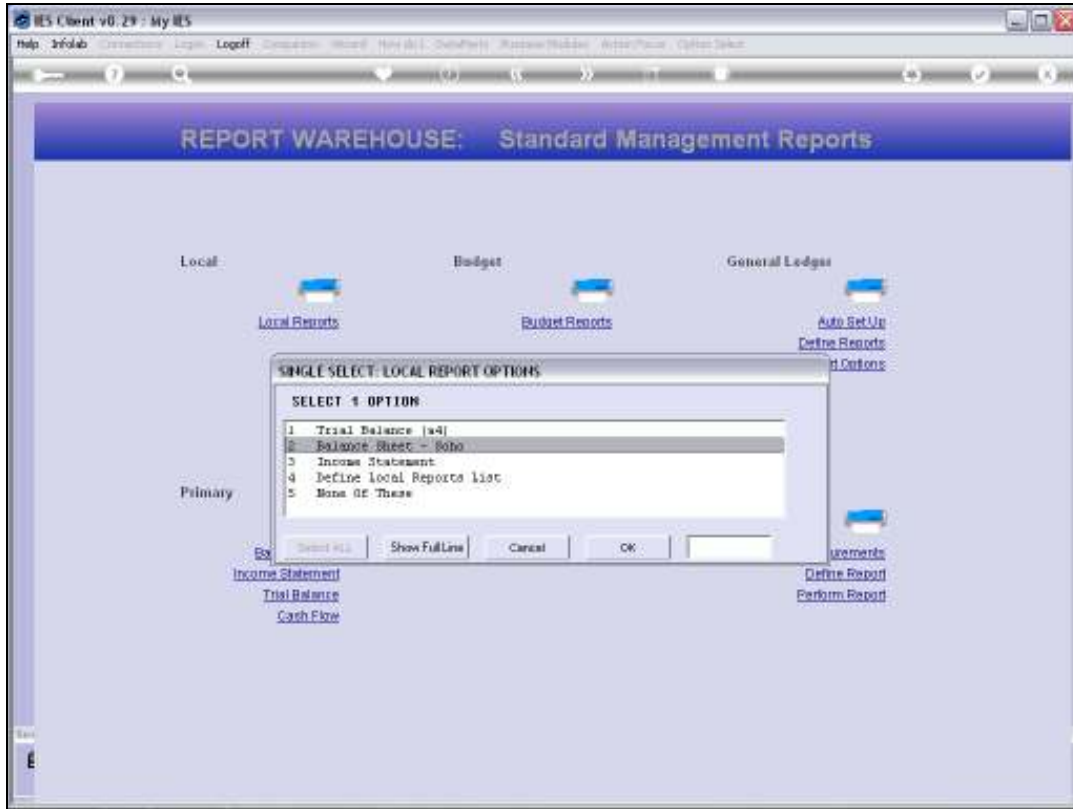
Slide 17

Slide notes:

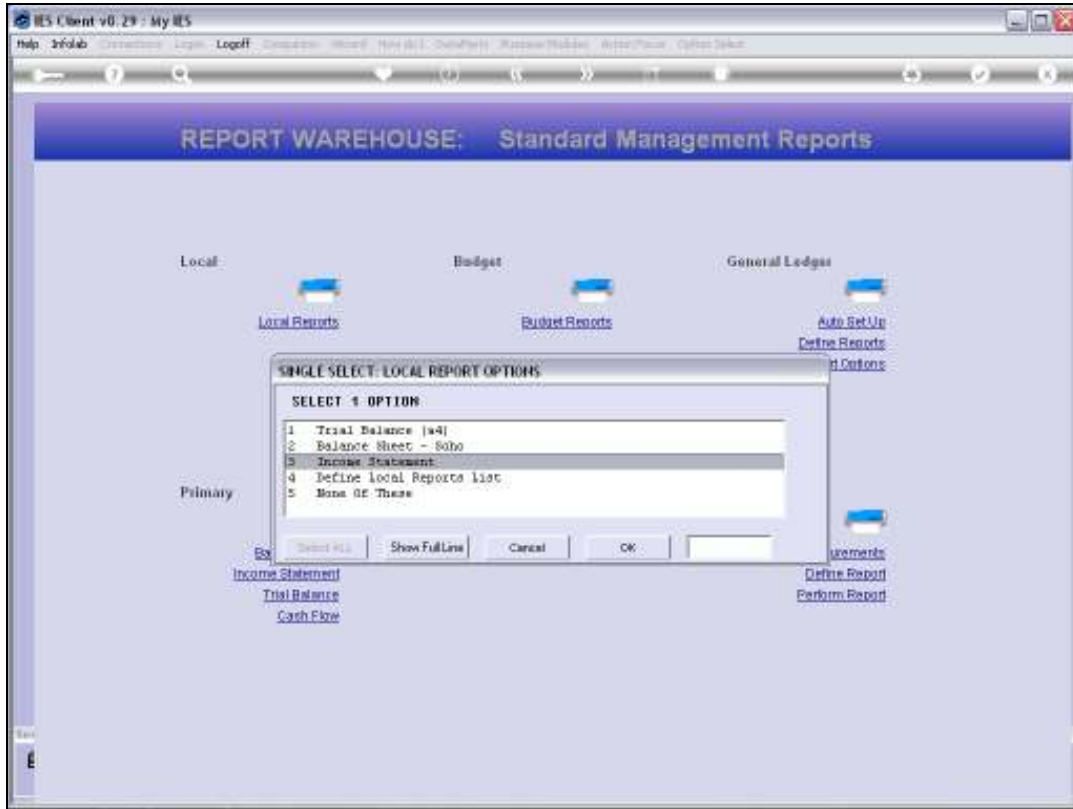


Slide 18

Slide notes: If we choose a Balance Sheet or Income Statement Report option on this list, then the system will automatically produce the Reports from the preferences that we have stated.



Slide 19  
Slide notes:



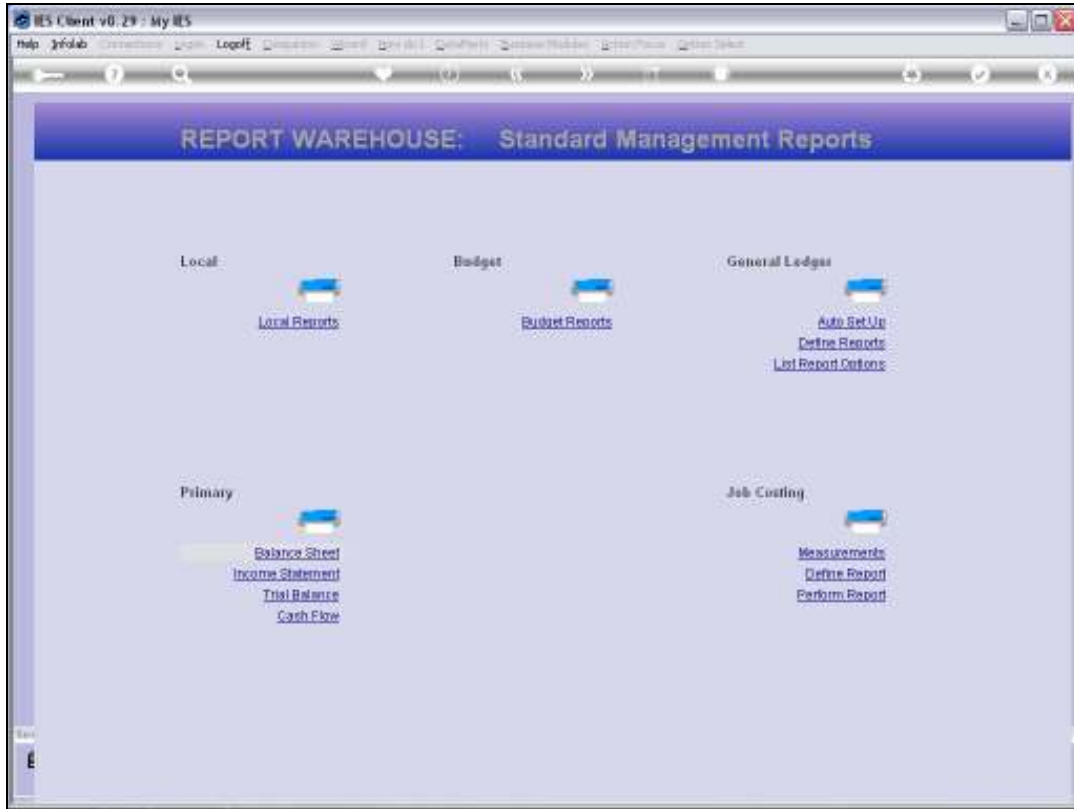
Slide 20

Slide notes:



Slide 21

Slide notes: And even when we perform a Balance Sheet or Income Statement from the Primary options, then we will still have our preferred versions performed.



Slide 22

Slide notes:



Slide 23

Slide notes: