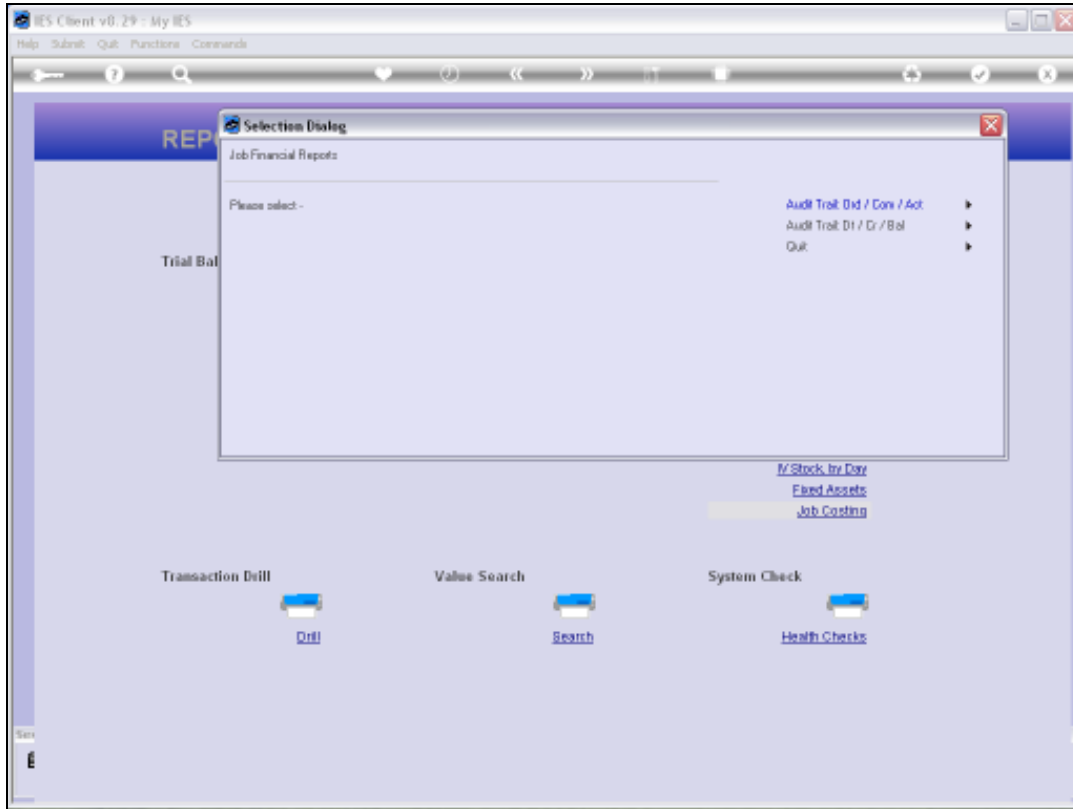


## Slide 1

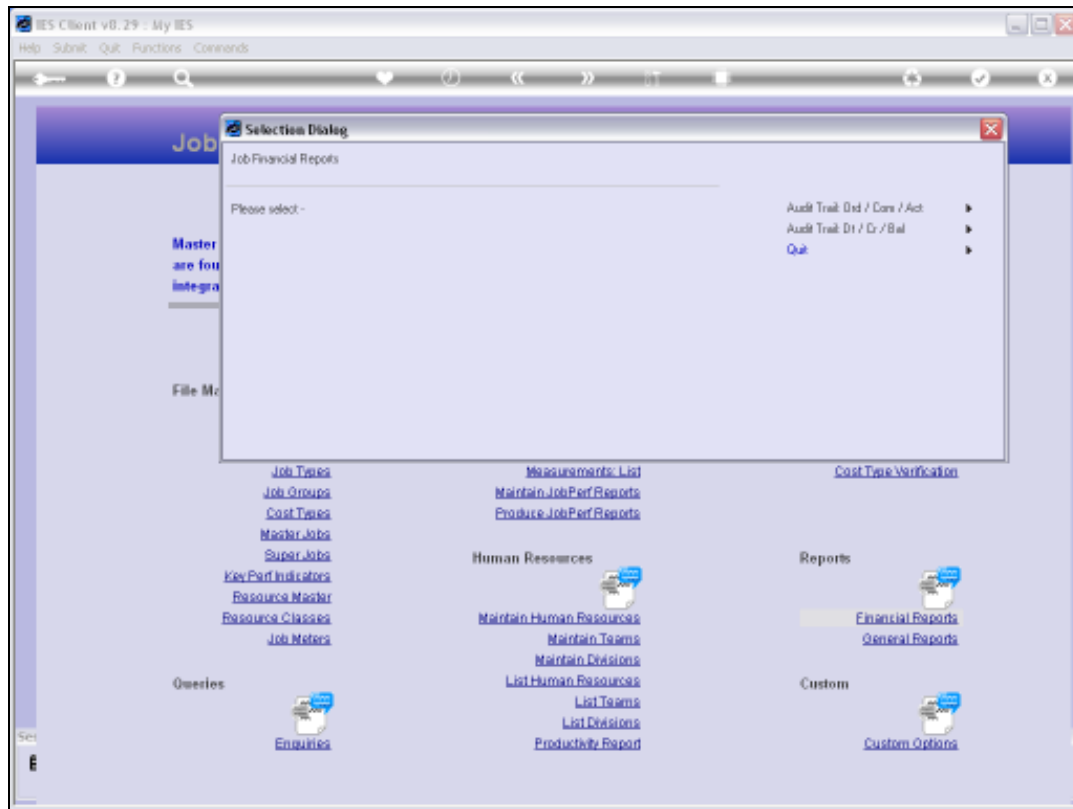
Slide notes: Job Costing Audit Trails can be performed on demand from Job Master screens and Transactions drills, and the Bulk Options for any selection of Jobs can be performed from the Report Warehouse at the Audit Trails section, plus from the Job Application menu.



Slide 2  
Slide notes:



Slide 3  
Slide notes:



#### Slide 4

Slide notes: There are 2 primary formats available for Job Costing Audit Trails, and these are the Order/Commit/Actual format with the Purchase Order focus, plus the standard Debit/Credit/Balance format. We start by looking at the OCA format.

The screenshot shows the IES Client v8.29 interface. The main window is titled "Values to use for Jobs Audit Trail Printing". The interface includes a menu bar with "Help", "Submit", "Quit", "Functions", and "Comments". Below the menu bar is a toolbar with various icons. The main content area contains the following fields and options:

- File To Select: jolexast
- Period From: Jul 2010 (p 114)
- Period To: Jul 2010 (p 114)
- Newpage Each Account?
- Credit Zero Movement
- Logical Contra
- Trans Sequence: normal
- Data Selector: Job-Econ-to RANGE FROM - TO

At the bottom of the dialog box, there are two buttons: "EXIT" and "NEXT". The status bar at the bottom of the window displays "Session Info: Terry is using IES" and a taskbar with icons for "Jobs", "Application Wizard", "Job Account(s) Audit Trail", and "FMREPEXC-JOBS". The system clock shows "2010/07/18 11:00:09".

## Slide 5

Slide notes: Performing these Audit Trail reports are essentially the same for all the Financial Modules. We can always select a Period Range, the Accounts to include, etc.



Slide 6  
Slide notes:

IES Client v8.29 - My IES

Help Submit Quit Functions Comments

IES REPORTS AND QUERIES: - User Instructions

NAME:

1: - CHOOSE VERSION [Help](#)

Report Version:

2: - CHOOSE SETTINGS

Format:

Output:

File Type:

Template:

Report Header:

3: - CHOOSE DATA SELECTOR [Help](#)

Fixed choice

Data Selector:

4: - TO e-MAIL THE RESULTS [Help](#) Priority:

Dispatch By E-Mail [Add Group](#)

Mail To:

Mail Title:

Message Body:

5: - ADAPT DATA SELECTION (if groups are present) [Help](#)

How to enter MY CHOICE

Selection Tip	My Choice
1 Jobcode >= >	0
2 Jobcode <= >	21
3 Report Group = >	11

[Key](#) [Doc](#) [Add](#) [Print](#) [Go](#) [List](#)

6: - Record Select

OPEN/Records only

CLOSED/Records Only

BTRR

7: - CHOOSE NEXT [Next](#)

Slide 7  
Slide notes:

IES Client v8.29 - My IES

Help Submit Quit Functions Comments

---

IES REPORTS AND QUERIES: - User Instructions

NAME:

1: - CHOOSE VERSION [Help](#)

Report Version:

2: - CHOOSE SETTINGS

Format:

Output:

File Type:

Template:

Report Header:

3: - CHOOSE DATA SELECTOR [Help](#)

Fixed choice

Data Selector:

4: - TO e-MAIL THE RESULTS [Help](#) Priority:

Dispatch By E-Mail [Add Group](#)

Mail To:

Mail Title:

Message Body:

5: - ADAPT DATA SELECTION (if groups are present) [Help](#)

How to enter MY CHOICE

Selection Tip	My Choice
1 Jobcode >= >	0
2 Jobcode <= >	21
3 Report Group = >	11

[Help](#) [Doc](#) [Add](#) [Print](#) [Go](#) [List](#)

6: - Record Select

OPEN/Records only

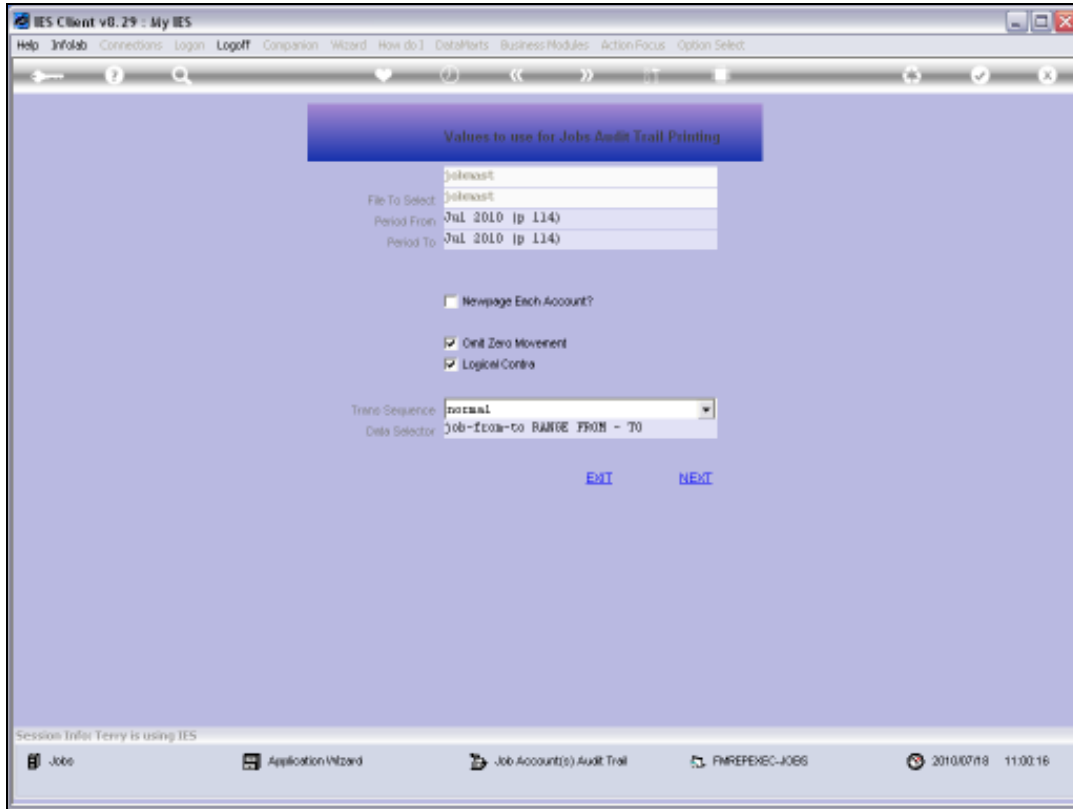
CLOSED/Records Only

B-THER

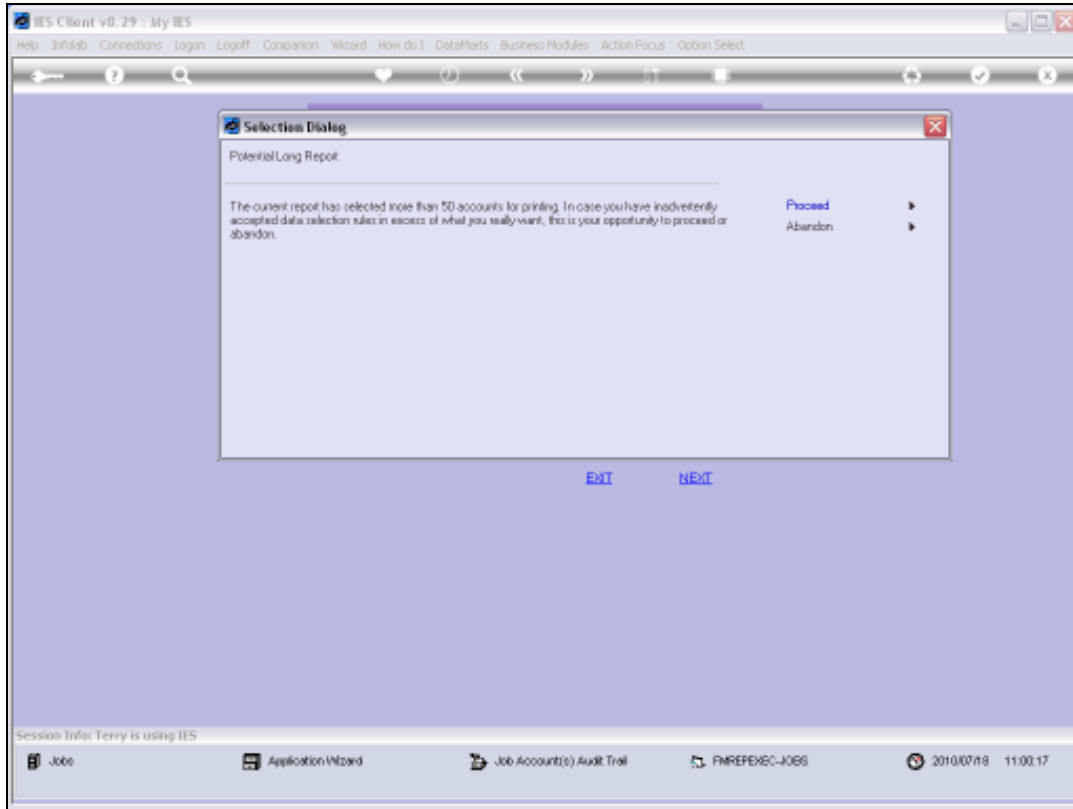
7: - CHOOSE NEXT [List](#)

Slide 8  
Slide notes:

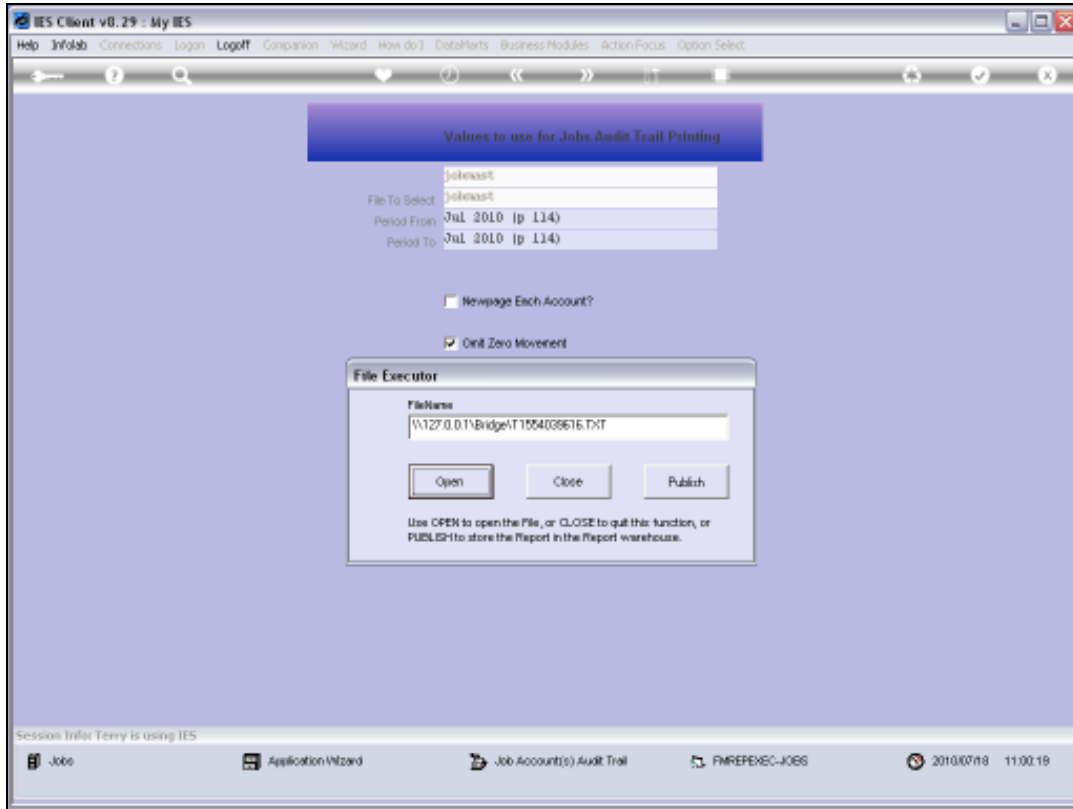




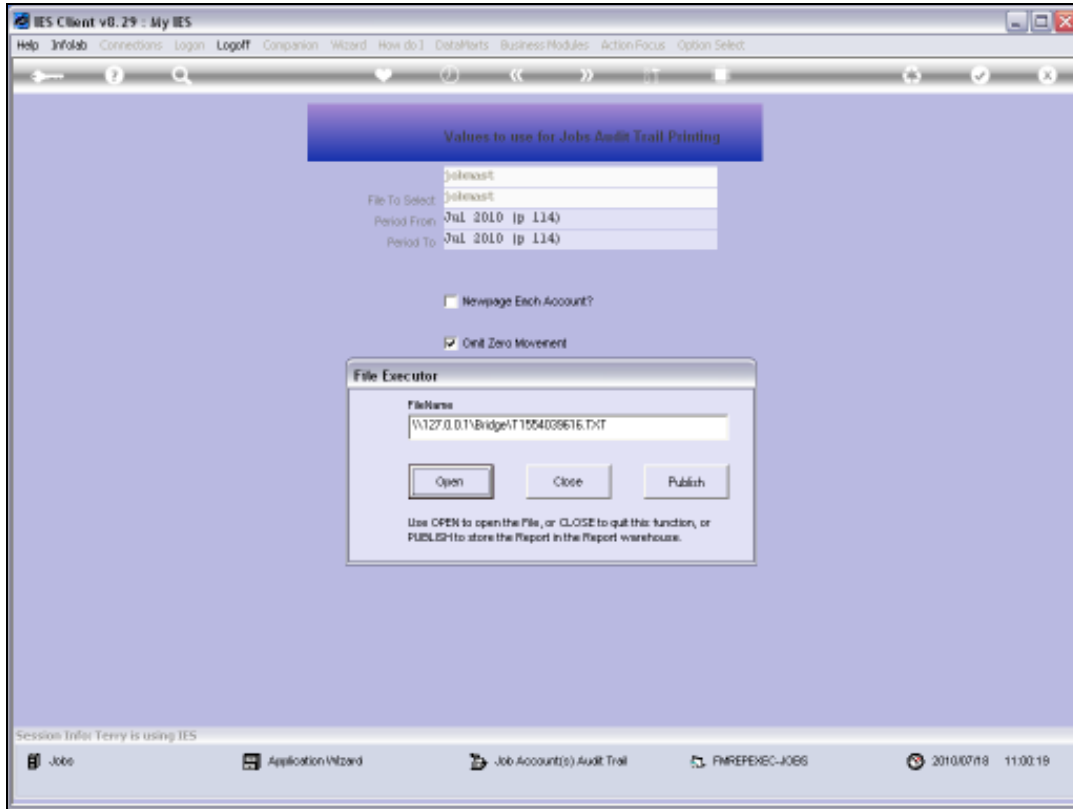
Slide 9  
Slide notes:



Slide 10  
Slide notes:



Slide 11  
Slide notes:



Slide 12  
Slide notes:

T1554039616.TXT - Notepad  
File Edit Format View Help

Gummy Hoops Inc.  
\*\*\*\*\*  
Account Number : VER1259 - KILUN 2000, F09262  
\*\*\*\*\*

J O B C O S T I N G      T R A N S A C T I O N    L I S T I N G    A T    Jul 2010 to Jul 2010 as printed on 18/07/2010

Date	Transaction Detail	Contra Account	Doc #	Ordered	Committed
	Balance B/F			0	0
18/07/10	Fuel VER1259 fuel	10000021	x 10900065	0	0
***** Closing Balance For Jul 2010				0	0
				0	0

Gummy Hoops Inc.  
\*\*\*\*\*  
Account Number : VER1261 - KILUN 2000, DC6101  
\*\*\*\*\*

J O B C O S T I N G      T R A N S A C T I O N    L I S T I N G    A T    Jul 2010 to Jul 2010 as printed on 18/07/2010

Date	Transaction Detail	Contra Account	Doc #	Ordered	Committed
	Balance B/F			0	0
18/07/10	Fuel VER1261 fuel	10000021	x 10900065	0	0
***** Closing Balance For Jul 2010				0	0
				0	0

Slide 13

Slide notes: Here is our OCA format example.

T1554039616.TXT - Notepad  
File Edit Format View Help

Gunny Hoops Inc.  
\*\*\*\*\*  
Account Number : VER1259 - KILON 2000, F09263  
\*\*\*\*\*

J O B   C O S T I N G            T R A N S A C T I O N   L I S T I N G   A T   Jul 2010 to Jul 2010 as printed on 18/07/2010

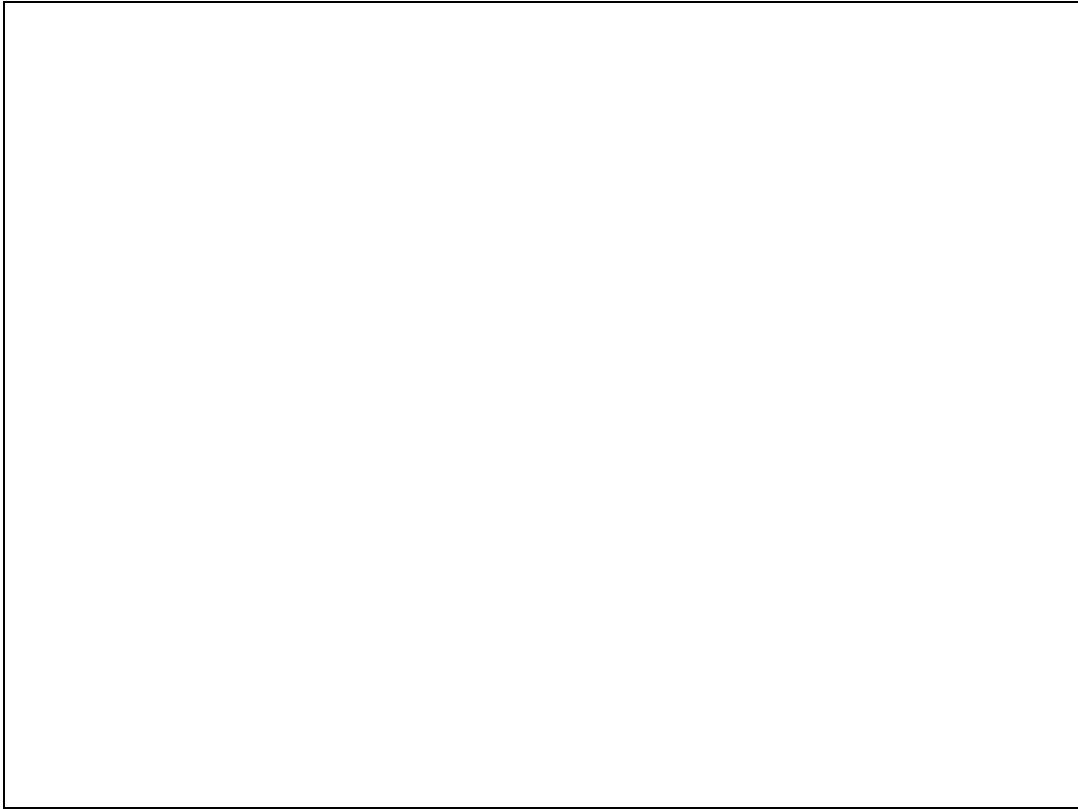
Date	Transaction Detail	Contra Account	Doc #		Ordered	Committed
	Balance B/F				0	0
18/07/10	Fuel	10000021	x 10900065	fuel	0	0
	VER1259 fuel					
	***** Closing Balance For Jul 2010				0	0
					0	0

Gunny Hoops Inc.  
\*\*\*\*\*  
Account Number : VER1261 - KILON 2000, D06101  
\*\*\*\*\*

J O B   C O S T I N G            T R A N S A C T I O N   L I S T I N G   A T   Jul 2010 to Jul 2010 as printed on 18/07/2010

Date	Transaction Detail	Contra Account	Doc #		Ordered	Committed
	Balance B/F				0	0
18/07/10	Fuel	10000021	x 10900065	fuel	0	0
	VER1261 fuel					
	***** Closing Balance For Jul 2010				0	0
					0	0

Slide 14  
Slide notes:



Slide 15

Slide notes:

Denny Hoops Inc.  
 \*\*\*\*\*  
 Account Number : 0001360 - BUDGET 2010, 000005  
 \*\*\*\*\*

Page 0001

INFO      T R A N S A C T I O N   L I S T I N G   A T   Jul 2010 to Jul 2010 as printed on 10/07/2010

Account Number	Description	Ordered#	Committed#	Annual Budget #	Page	Link
0000021	* 10000005      fee	0	0	0		
		0	0	004	PT-1007	1554027627
-----						
Jul 2010		0	0	004		
-----						
		0	0	004		
-----						

Denny Hoops Inc.  
 \*\*\*\*\*  
 Account Number : 0001361 - BUDGET 2010, 000101  
 \*\*\*\*\*

Page 0002

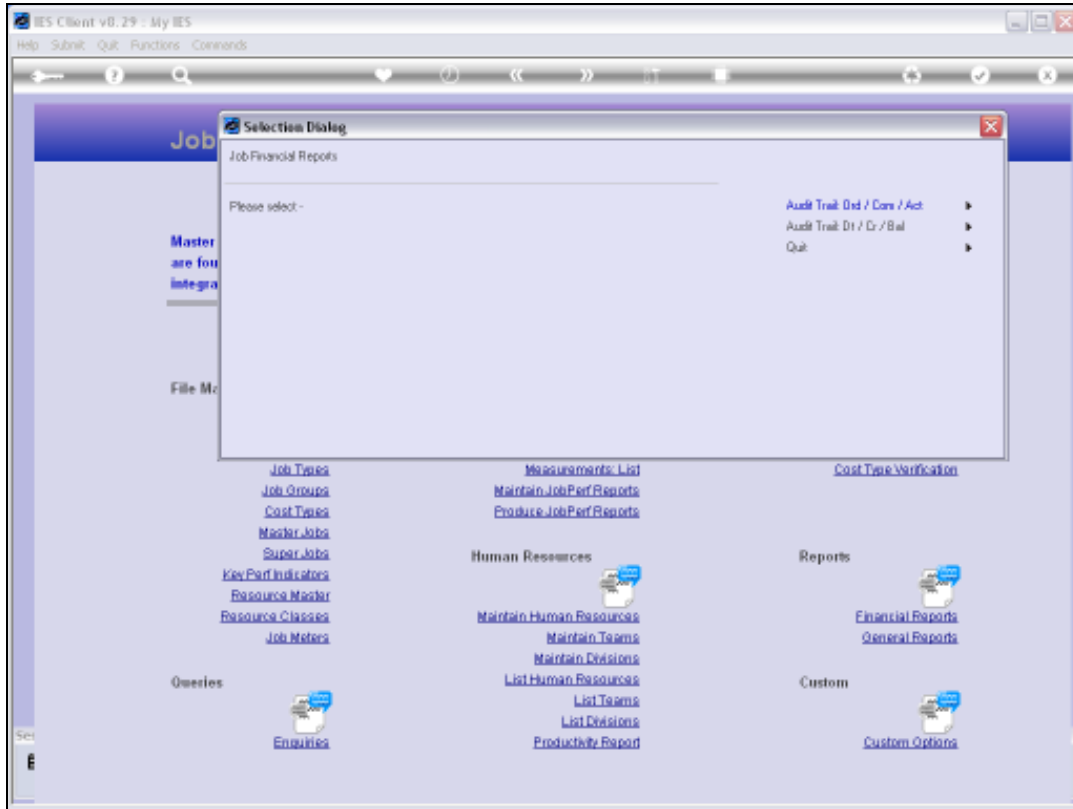
INFO      T R A N S A C T I O N   L I S T I N G   A T   Jul 2010 to Jul 2010 as printed on 10/07/2010

Account Number	Description	Ordered#	Committed#	Annual Budget #	Page	Link
0000021	* 10000005      fee	0	0	0		
		0	0	004	PT-1007	1554027627
-----						
Jul 2010		0	0	004		
-----						
		0	0	004		
-----						

Slide 16

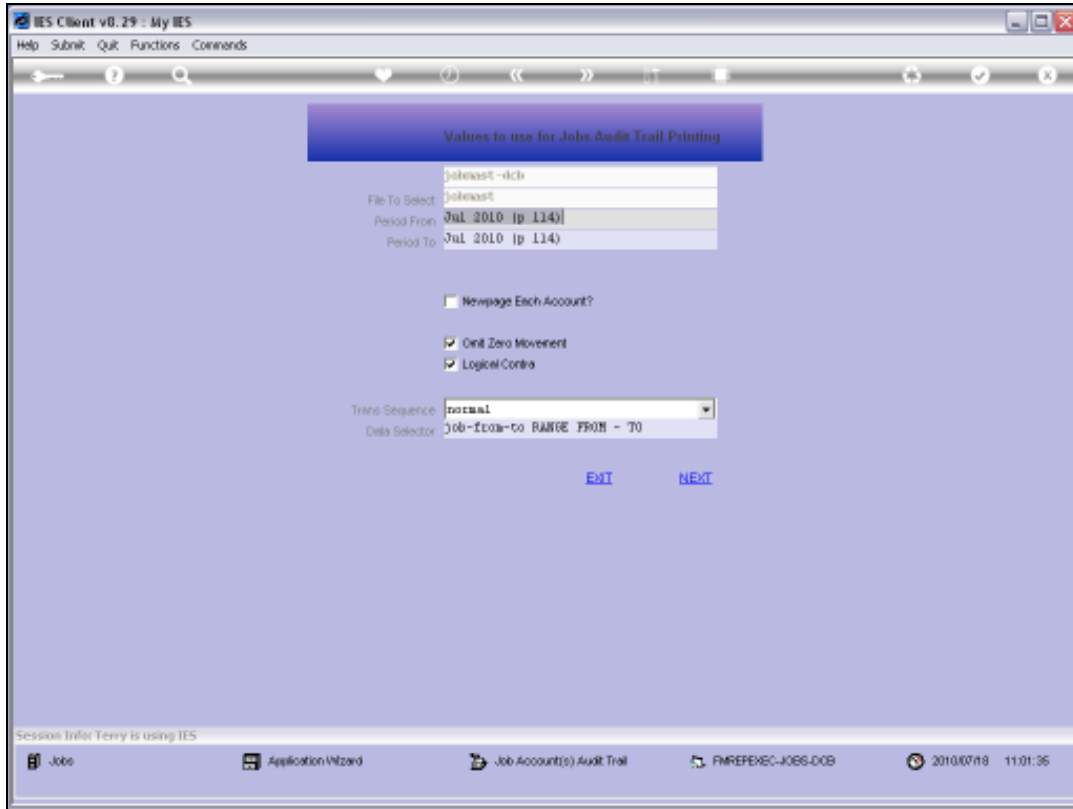
Slide notes: And the width of this format extends to the right.





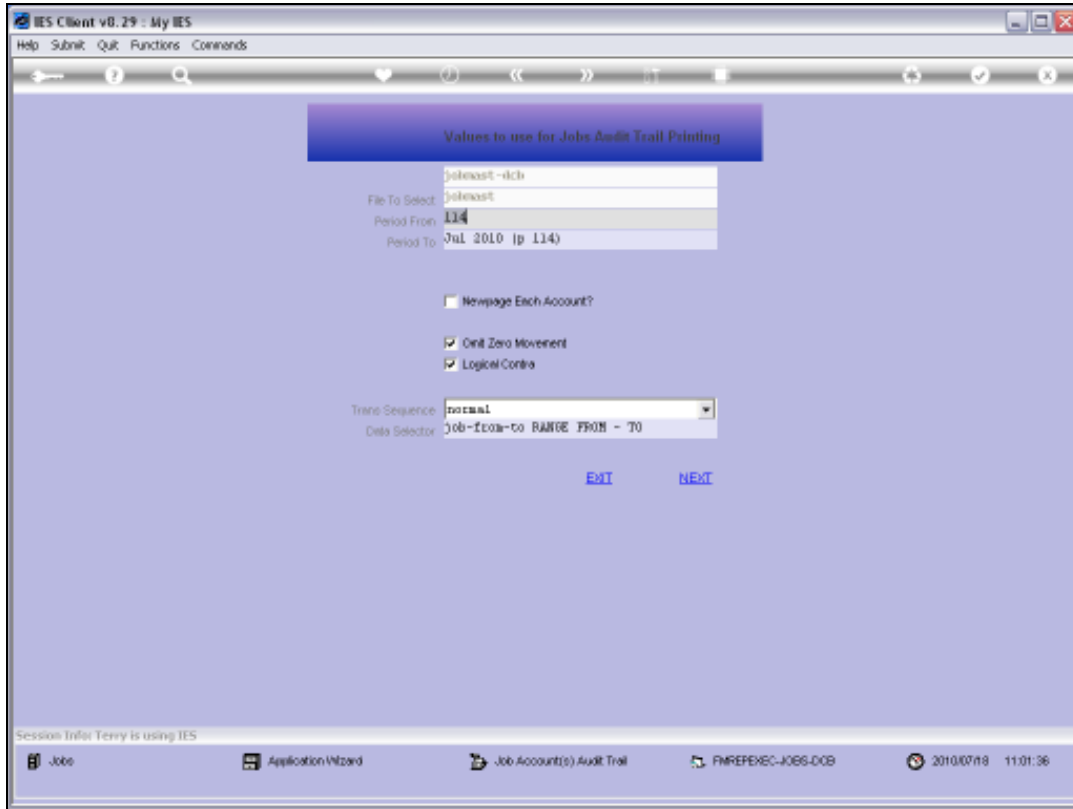
Slide 17

Slide notes: Next, we look at the DCB format option.



Slide 18

Slide notes:



Slide 19

Slide notes:

IES Client v8.29 - My IES

Help Submit Quit Functions Comments

IES REPORTS AND QUERIES: - User Instructions

NAME:

1: - CHOOSE VERSION [Help](#)

Report Version:

2: - CHOOSE SETTINGS

Format:

Output:

File Type:

Template:

Report Header:

3: - CHOOSE DATA SELECTOR [Help](#)

Fixed choice

Data Selector:

4: - TO e-MAIL THE RESULTS [Help](#) Priority:

Dispatch By E-Mail [Add Group](#)

Mail To:

Mail Title:

Message Body:

5: - ADAPT DATA SELECTION (if groups are present) [Help](#)

How to enter MY CHOICE

Selection Tip	My Choice
1 Jobcode >= >	0
2 Jobcode <= >	21
3 Report Group = >	11

[Key](#) [Doc](#) [Add](#) [Print](#) [Go](#) [List](#)

6: - Record Select

OPEN/Records only

CLOSED/Records Only

EITHER

7: - CHOOSE NEXT [Next](#)

Slide 20  
Slide notes:

IES Client v8.29 - My IES

Help Submit Quit Functions Comments

IES REPORTS AND QUERIES: - User Instructions

NAME:

1: - CHOOSE VERSION [Help](#)

Report Version:

2: - CHOOSE SETTINGS

Format:

Output:

File Type:

Template:

Report Header:

3: - CHOOSE DATA SELECTOR [Help](#)

Fixed choice

Data Selector:

4: - TO e-MAIL THE RESULTS [Help](#) Priority:

Dispatch By E-Mail [Add Group](#)

Mail To:

Mail Title:

Message Body:

5: - ADAPT DATA SELECTION (if groups are present)  
How to enter MY CHOICE

Selection Tip	My Choice
1 Jobcode >= >	0
2 Jobcode <= >	21
3 Report Group = >	11

[Help](#) [Doc](#) [Add](#) [Print](#) [Go](#) [List](#)

6: - Record Select

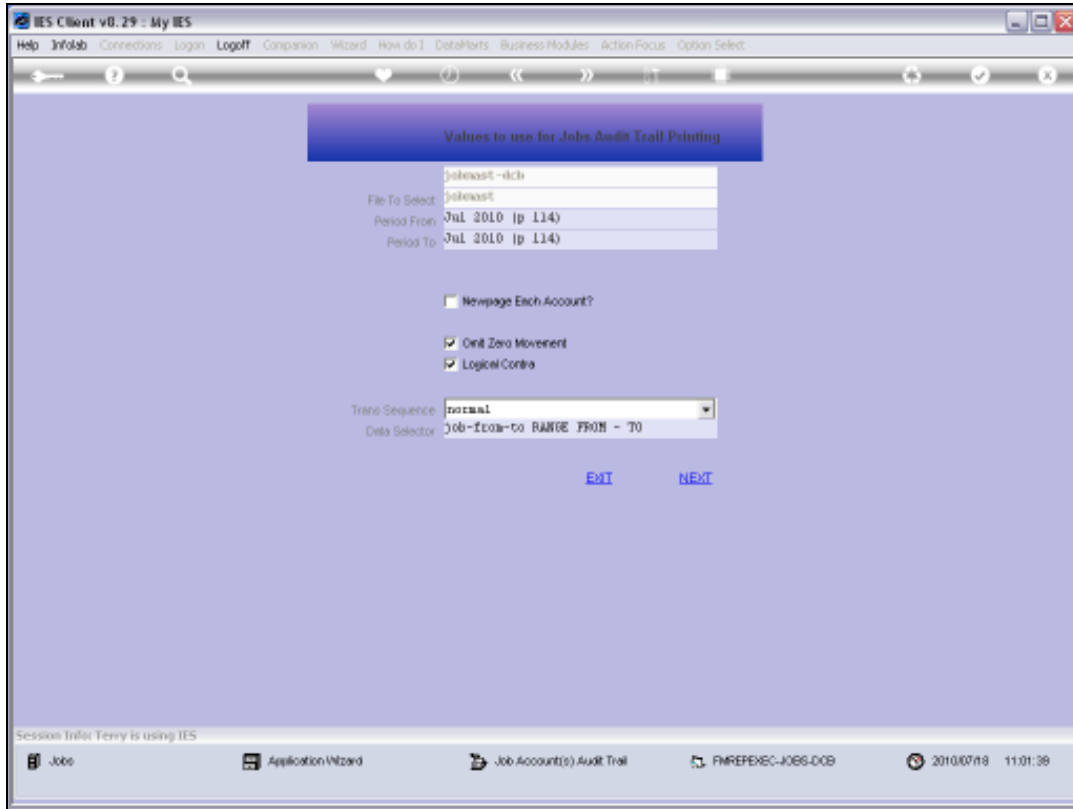
OPEN/Records only

CLOSED/Records Only

EITHER

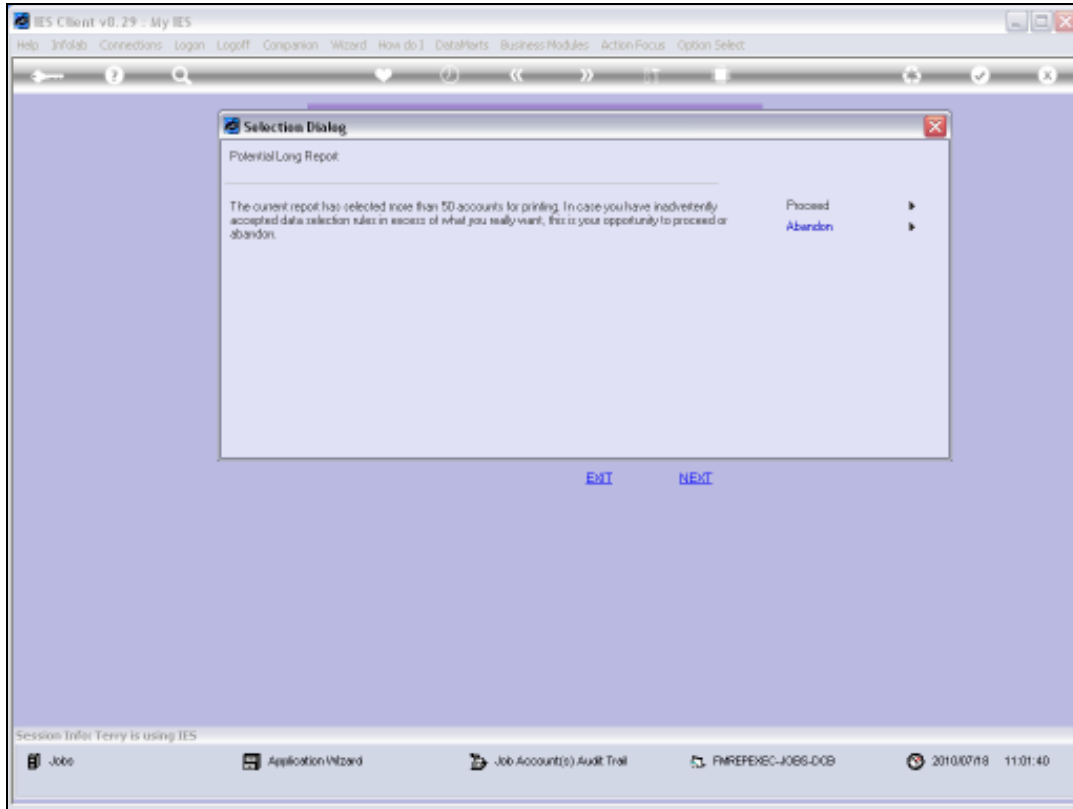
7: - CHOOSE NEXT [Next](#)

Slide 21  
Slide notes:



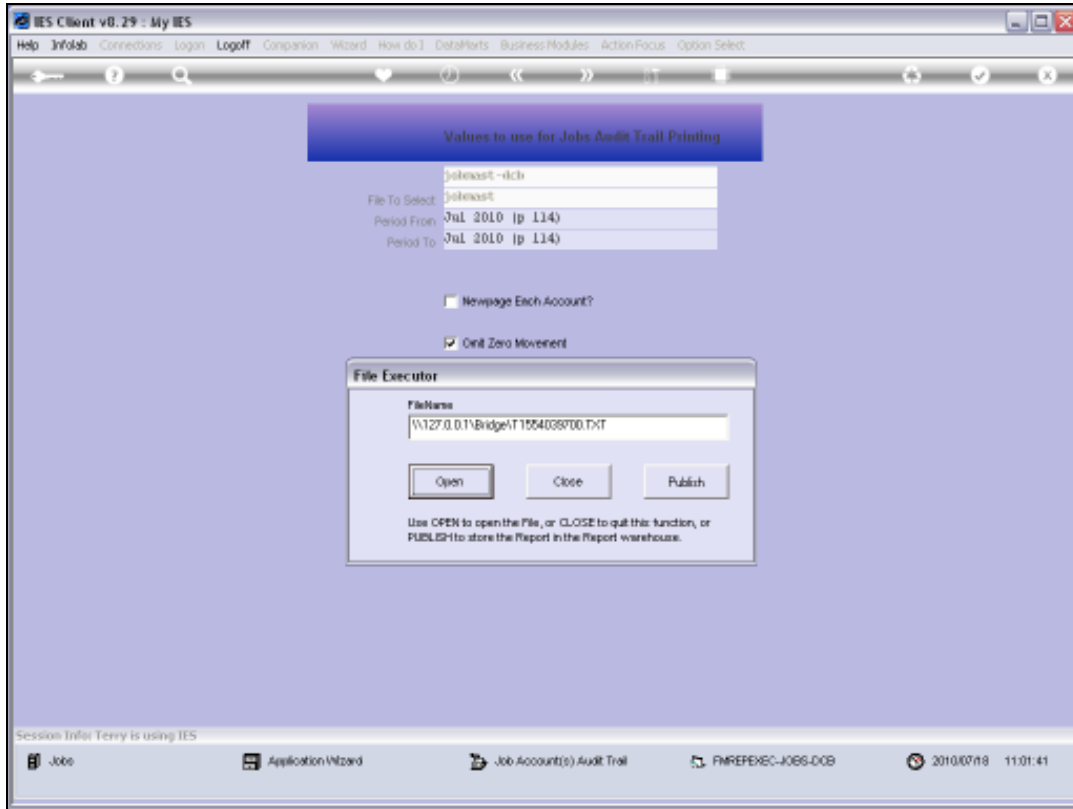
Slide 22

Slide notes:



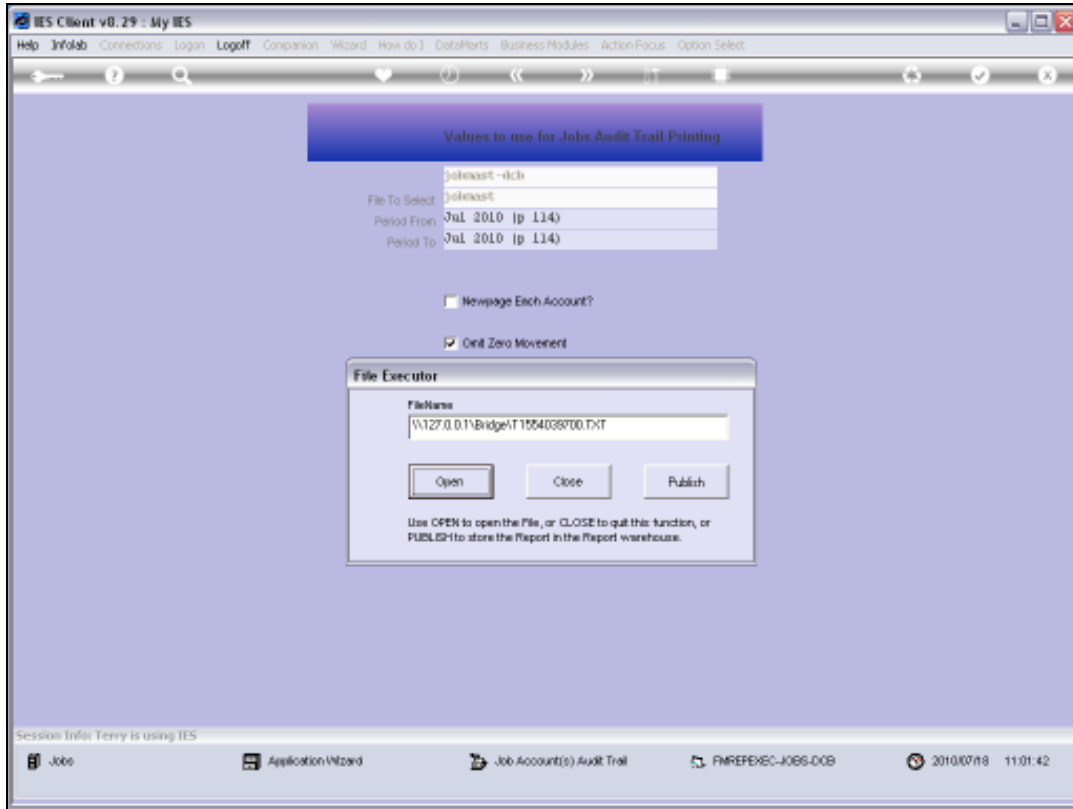
Slide 23

Slide notes:



Slide 24  
Slide notes:





Slide 25  
Slide notes:

T1554039700.TXT - Notepad

File Edit Format View Help

```

Sunway Hoops Inc.
*****
Account Number : VER1250 - KILDN 2000, F06660
*****

JOB9 TRANSACTION LISTING AT Jul 2010 to Jul 2010 as printed on 10/07/2010      Page 00001
Date  Description                Document      Debit      Credit     Balance
-----
Balance B/F                                0.00
10/07/10 Fuel                      FUR: BR12002    502.90      0.00    502.90
***** Closing Balance For Jul 2010                                502.90
-----
                                                502.90
*****

Sunway Hoops Inc.
*****
Account Number : VER1261 - KILDN 2000, I06101
*****

JOB9 TRANSACTION LISTING AT Jul 2010 to Jul 2010 as printed on 10/07/2010      Page 00002
Date  Description                Document      Debit      Credit     Balance
-----
Balance B/F                                0.00
10/07/10 Fuel                      FUR: BR12002    224.22      0.00    224.22
***** Closing Balance For Jul 2010                                224.22
-----
                                                224.22
*****

```

## Slide 26

Slide notes: The standard format for DCB is also wide like the OCA example we have already looked at, but the DCB format is customizable and we can omit some columns, change the width of selected columns, etc. In other words, this narrower format shown here is a local User Customized format.

T1554039700.TXT - Notepad  
File Edit Format View Help

Sunway Hoops Inc.  
\*\*\*\*\*  
Account Number : VER1250 - RILUN 2000, ICG660  
\*\*\*\*\*

FOES TRANSACTION LISTING AT Jul 2010 to Jul 2010 as printed on 19/07/2010 Page 00001

Date	Description	Document	Debit	Credit	Balance
	Balance B/F				0.00
19/07/10	Fuel	FUE: BR12002	502.90	0.00	502.90
	***** Closing Balance For Jul 2010				502.90
					502.90

Sunway Hoops Inc.  
\*\*\*\*\*  
Account Number : VER1261 - RILUN 2000, ICG101  
\*\*\*\*\*

FOES TRANSACTION LISTING AT Jul 2010 to Jul 2010 as printed on 19/07/2010 Page 00002

Date	Description	Document	Debit	Credit	Balance
	Balance B/F				0.00
19/07/10	Fuel	FUE: BR12002	924.32	0.00	924.32
	***** Closing Balance For Jul 2010				924.32
					924.32

Slide 27  
Slide notes: