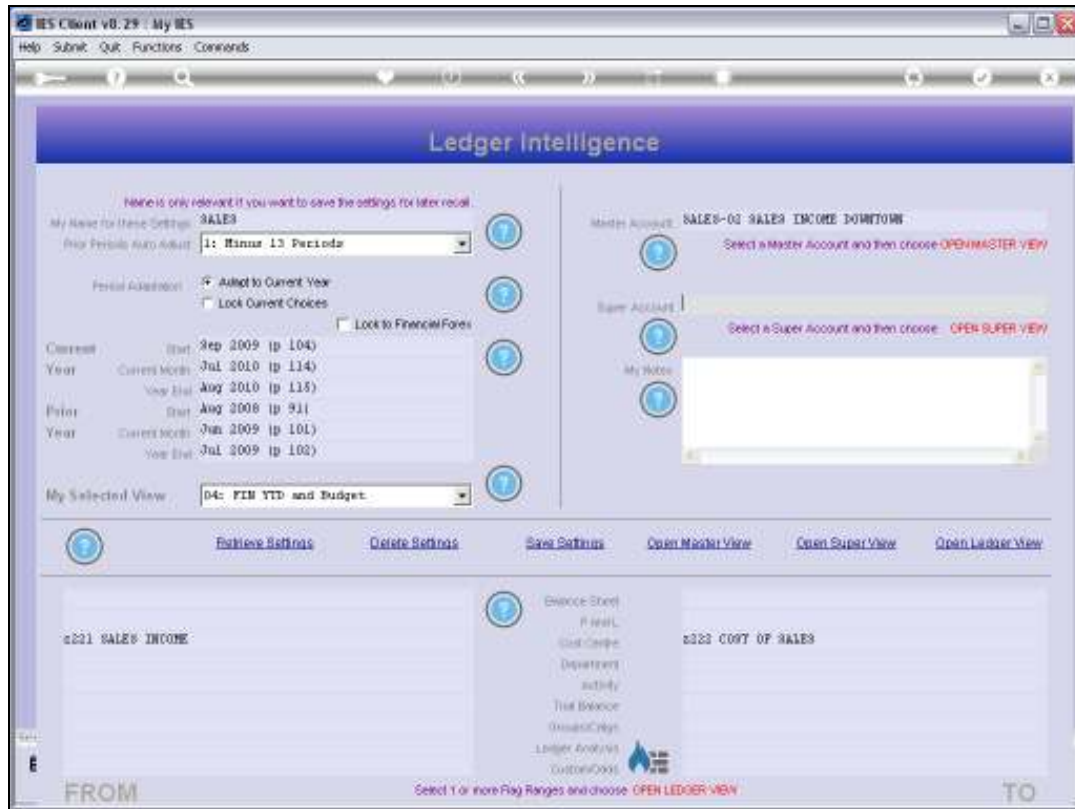


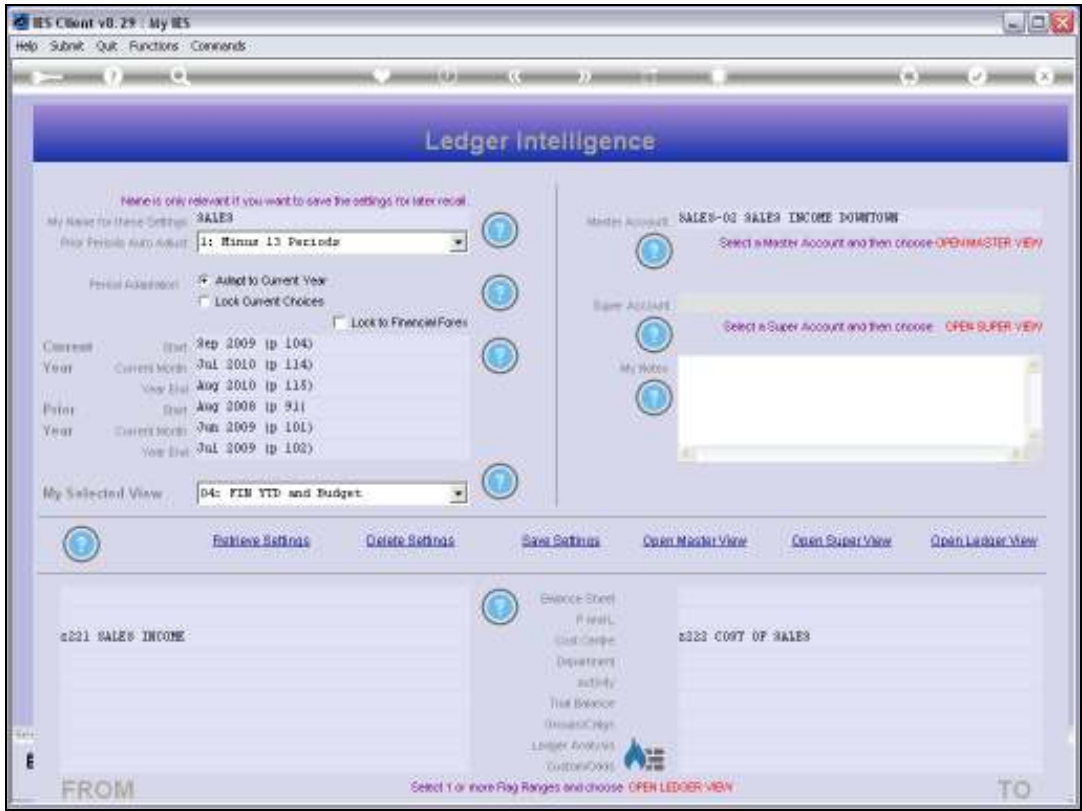
Slide 1

Slide notes: While working with a View Set, we can open a Super Account View, if we select a Super Account that will be the basis of that View.

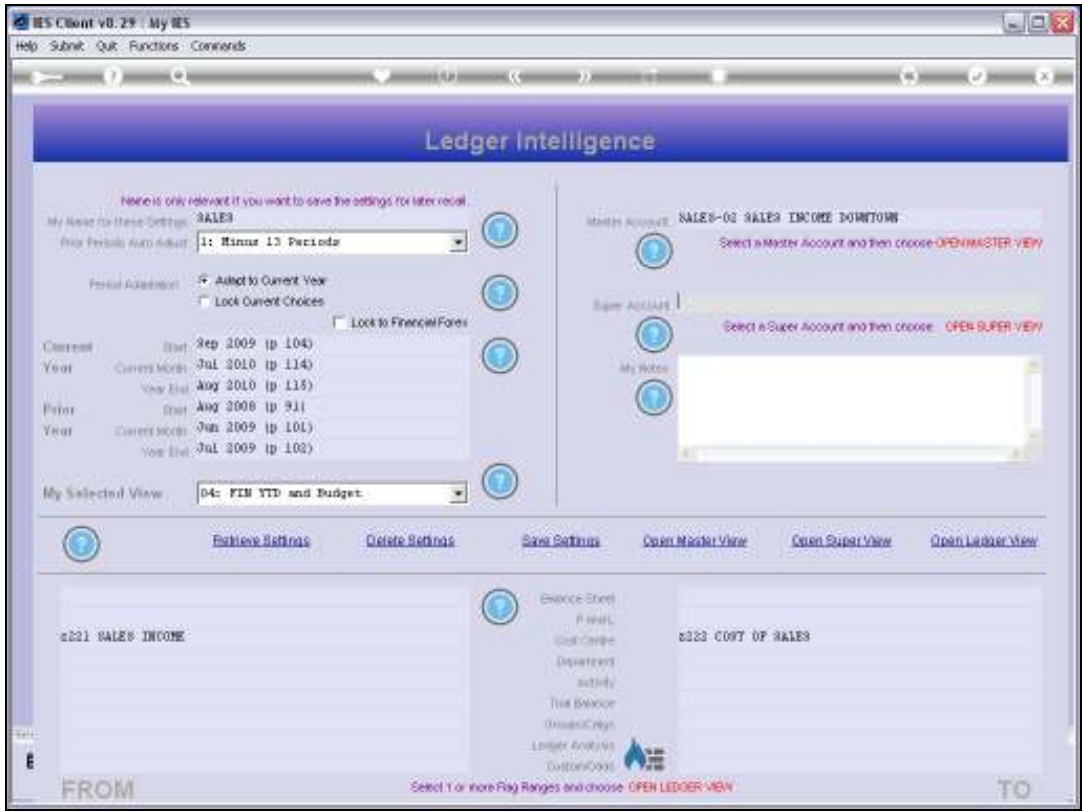


Slide 2

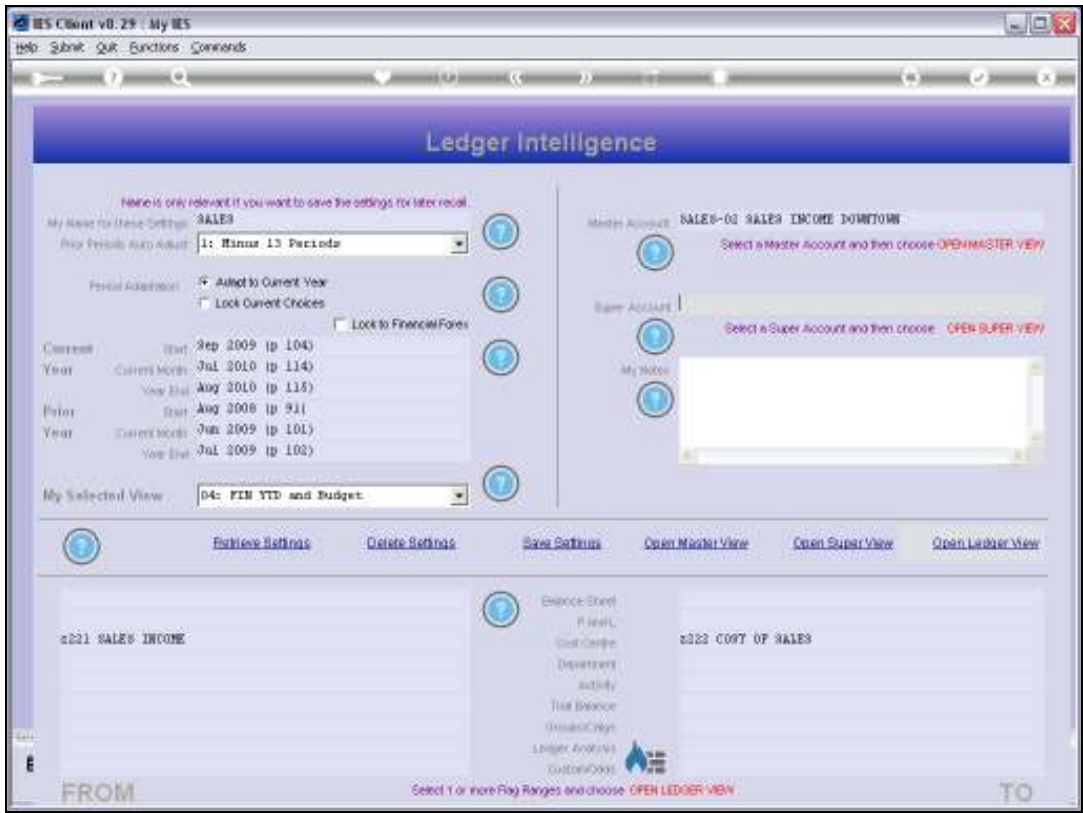
Slide notes: For Ledger Views, the Accounts to be included are determined by the settings we make at the Chart Flags, but not so for Super Account Views. Although the inner View Selection and the Period Settings work the same as for a Ledger View, the Super View is always based on a Super Account.



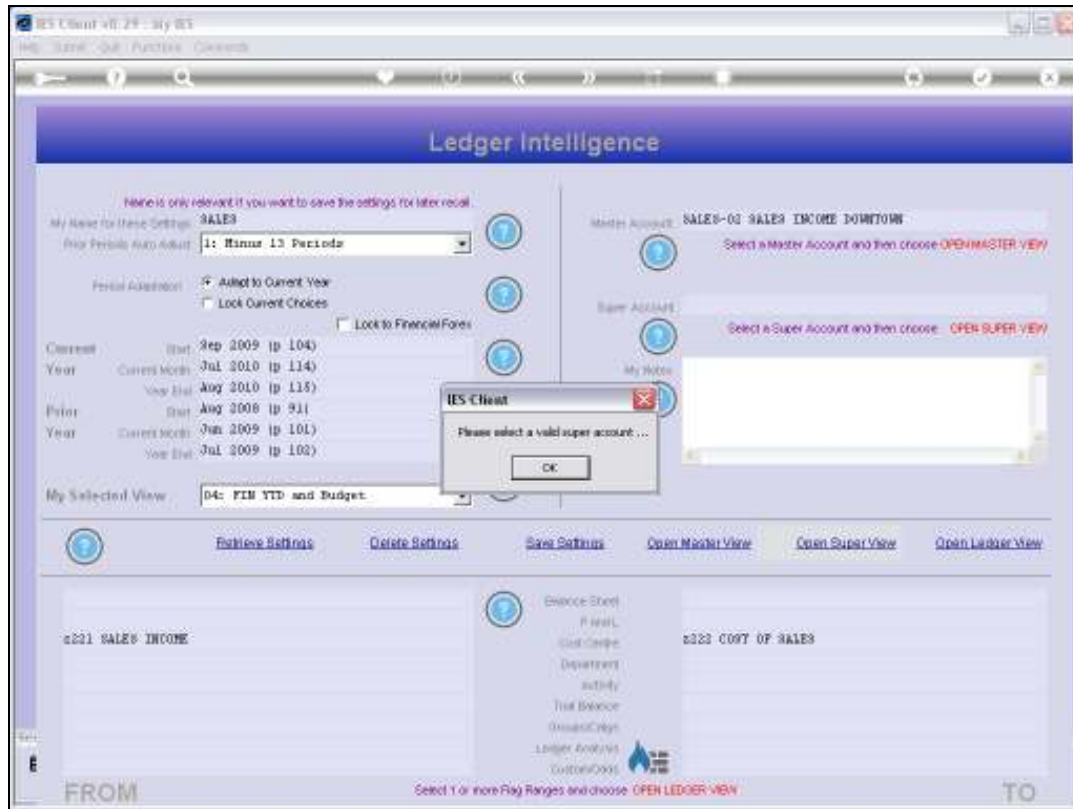
Slide 3
Slide notes:



Slide 4
Slide notes:

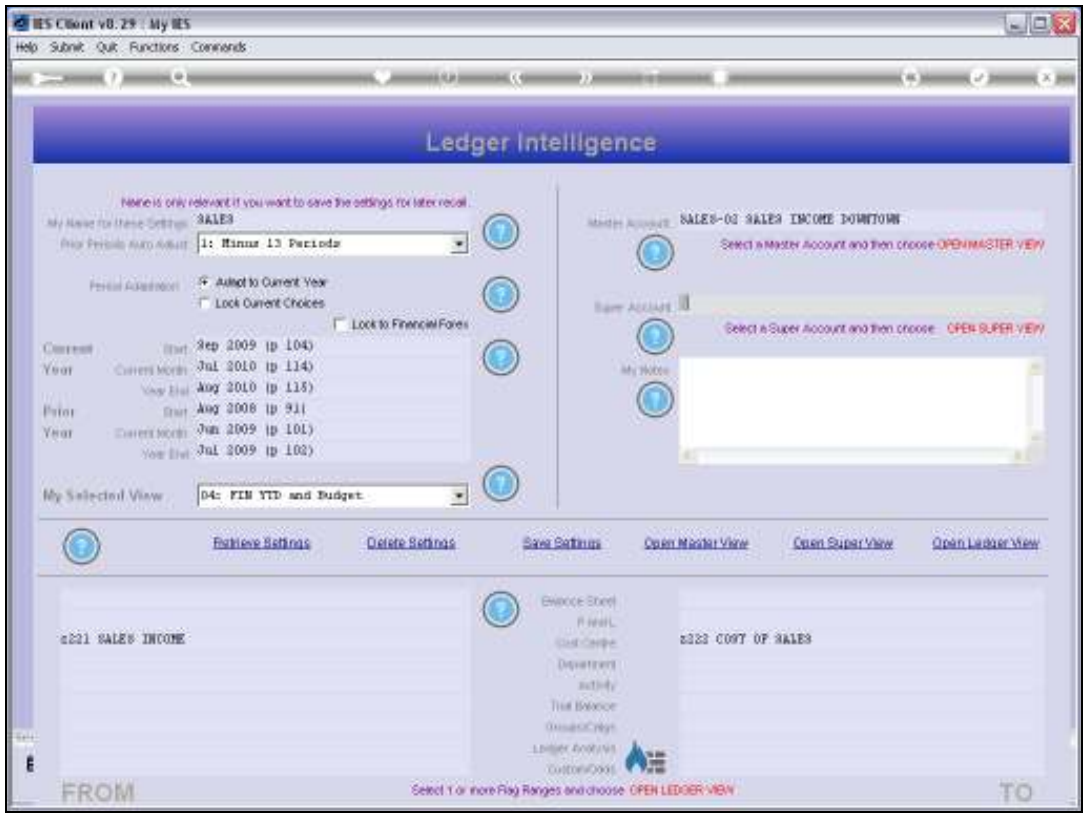


Slide 5
Slide notes:



Slide 6

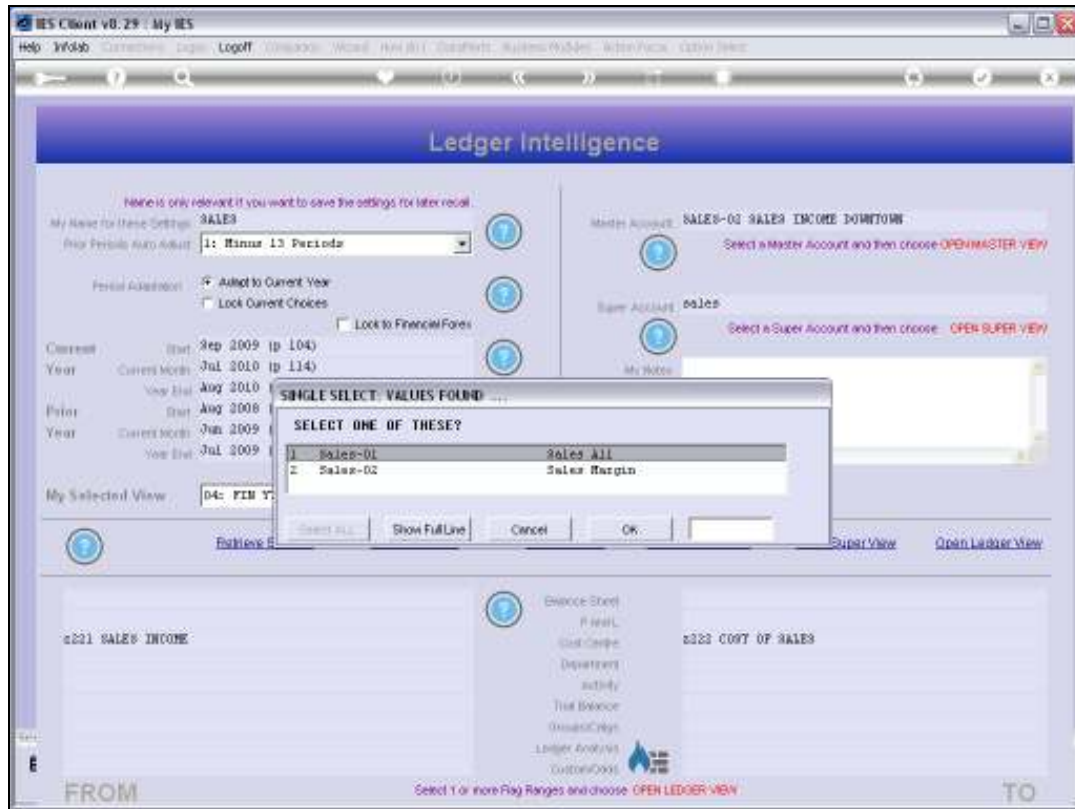
Slide notes: Therefore, when we choose to open a Super Account View, we can only do it if we have indicated the Super Account to use.



Slide 7
Slide notes:

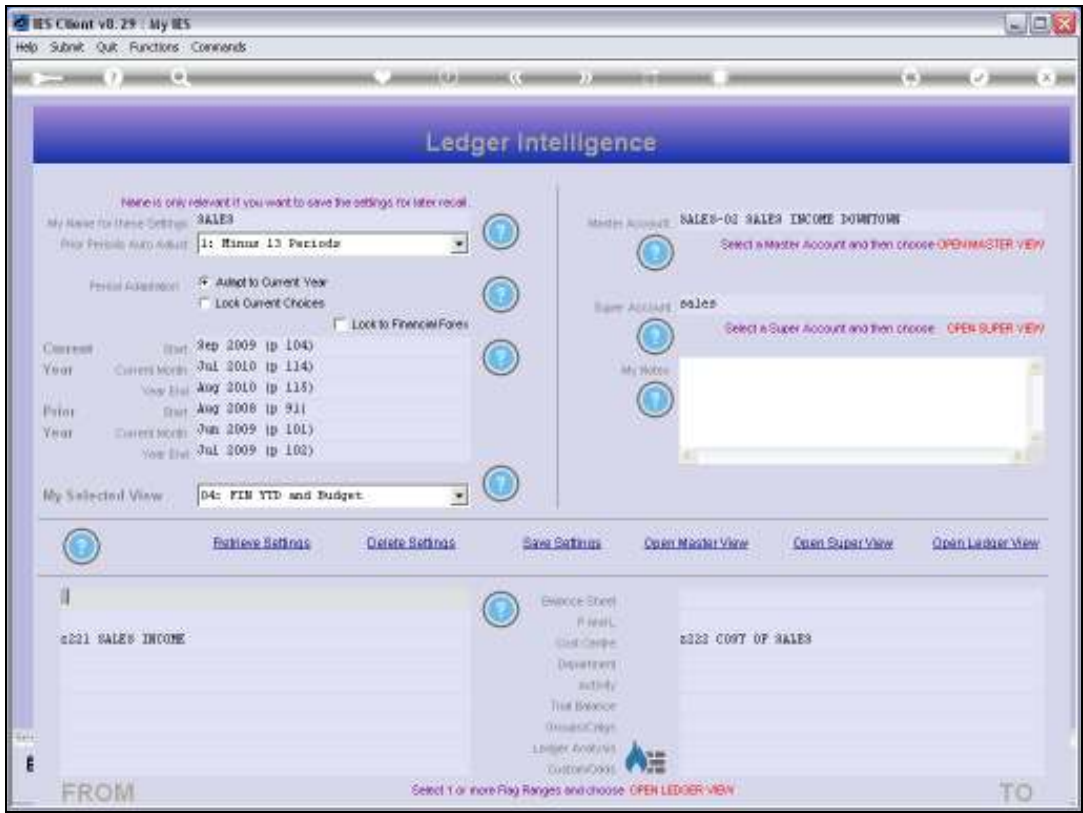


Slide 8
Slide notes:

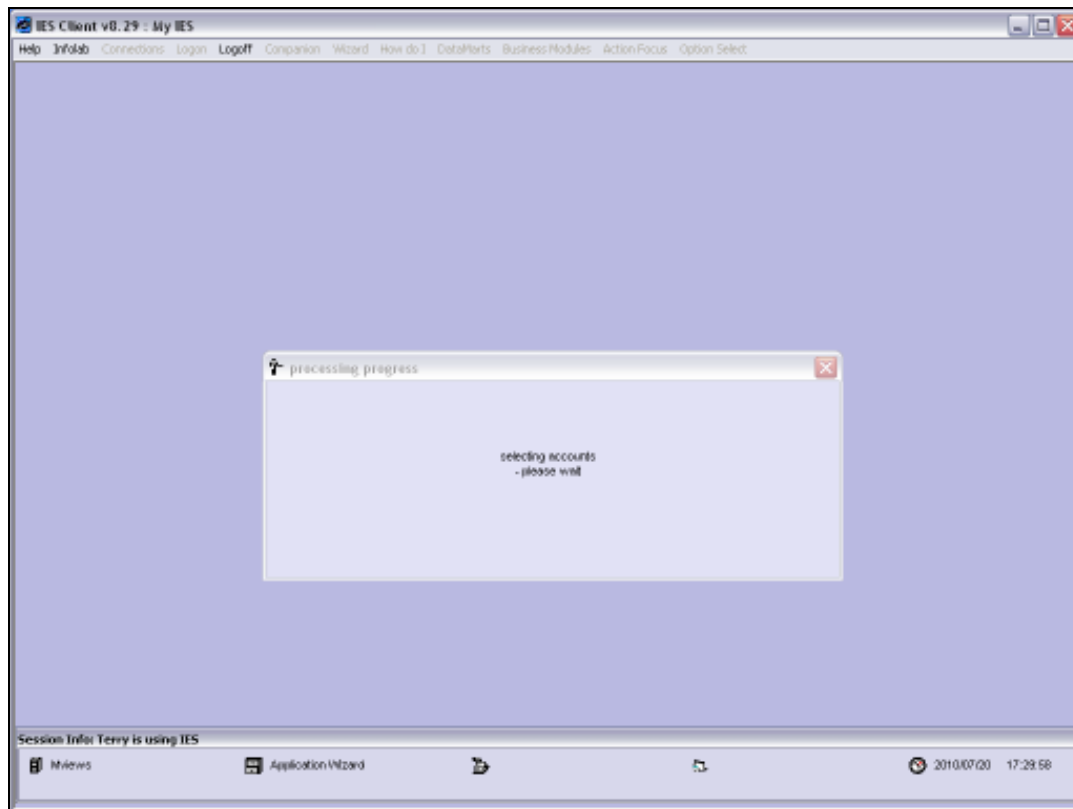


Slide 9

Slide notes: A Super Account is established in the Chart of Accounts, outside of Business Intelligence. We cannot make the Super Account here. However, we can select an existing Super Account, which always includes 1 or more Master Accounts, and then we can open a Super View in the same manner as we would open a Ledger View. A Super View is quite powerful, and will present 1 or more Master Views, any of which can be drilled to reveal a Ledger View.

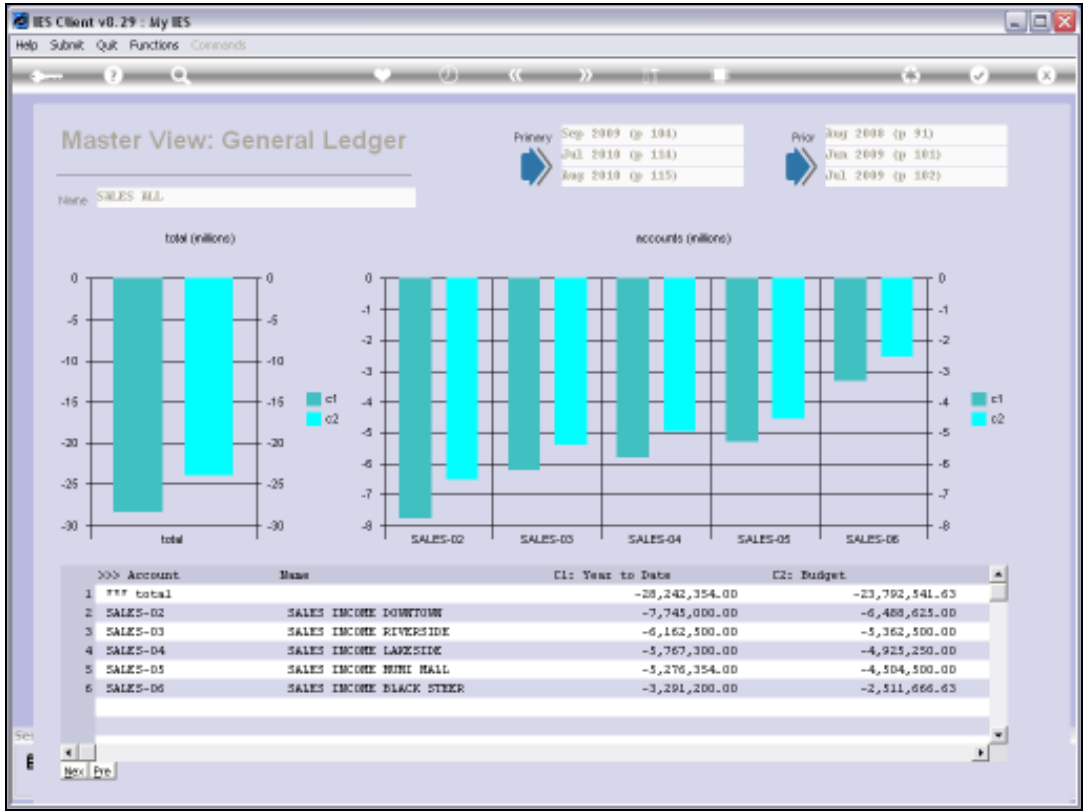


Slide 10
Slide notes:



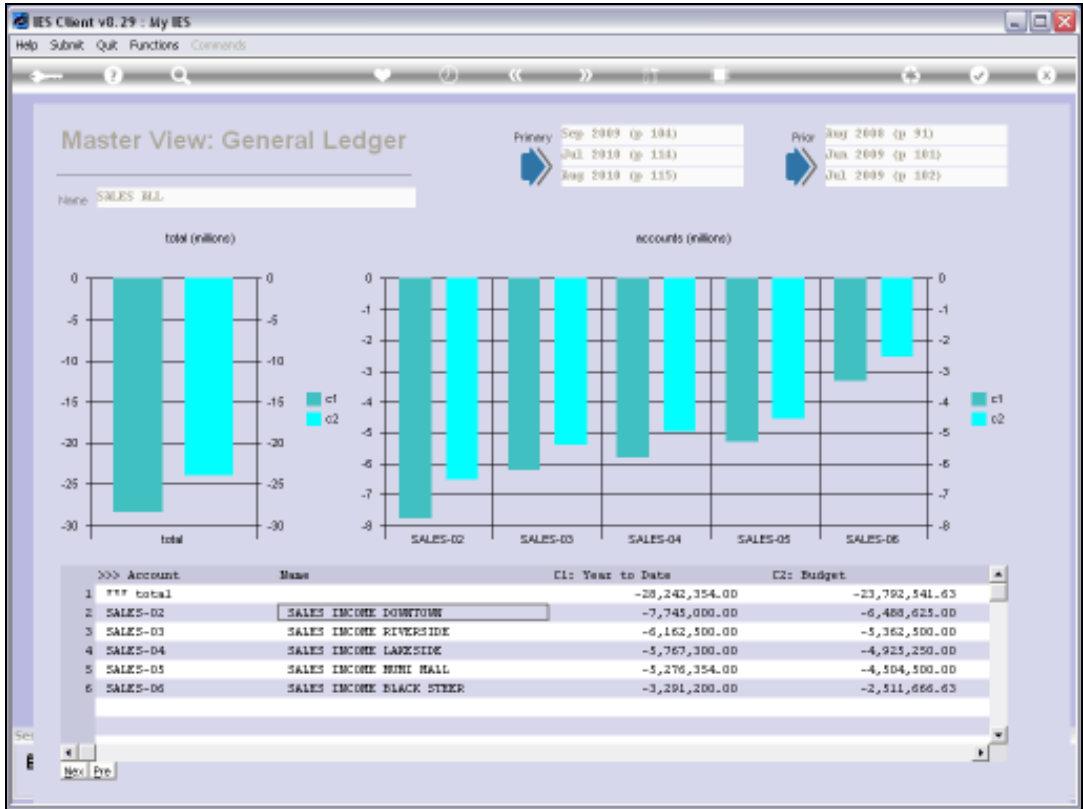
Slide 11

Slide notes:



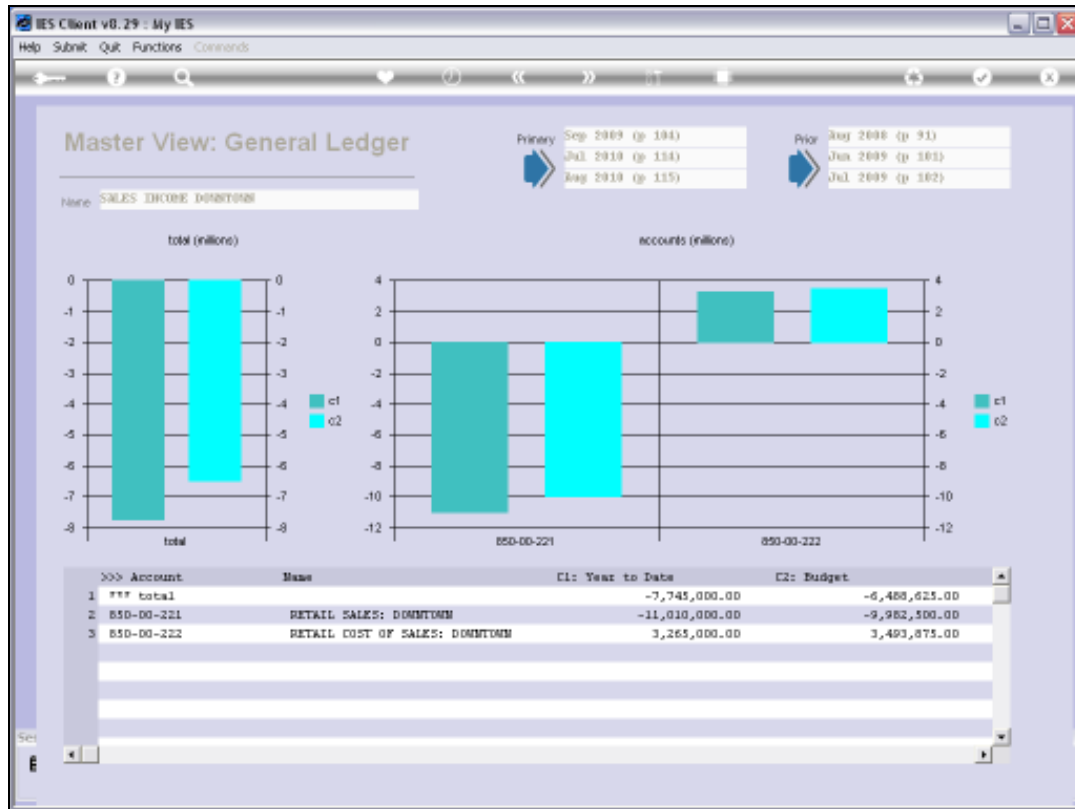
Slide 12

Slide notes: So here we have our Super View, which includes 5 Master Account Views. For each of our Branches, we can see the Year to Date Sales performance versus the Budget.



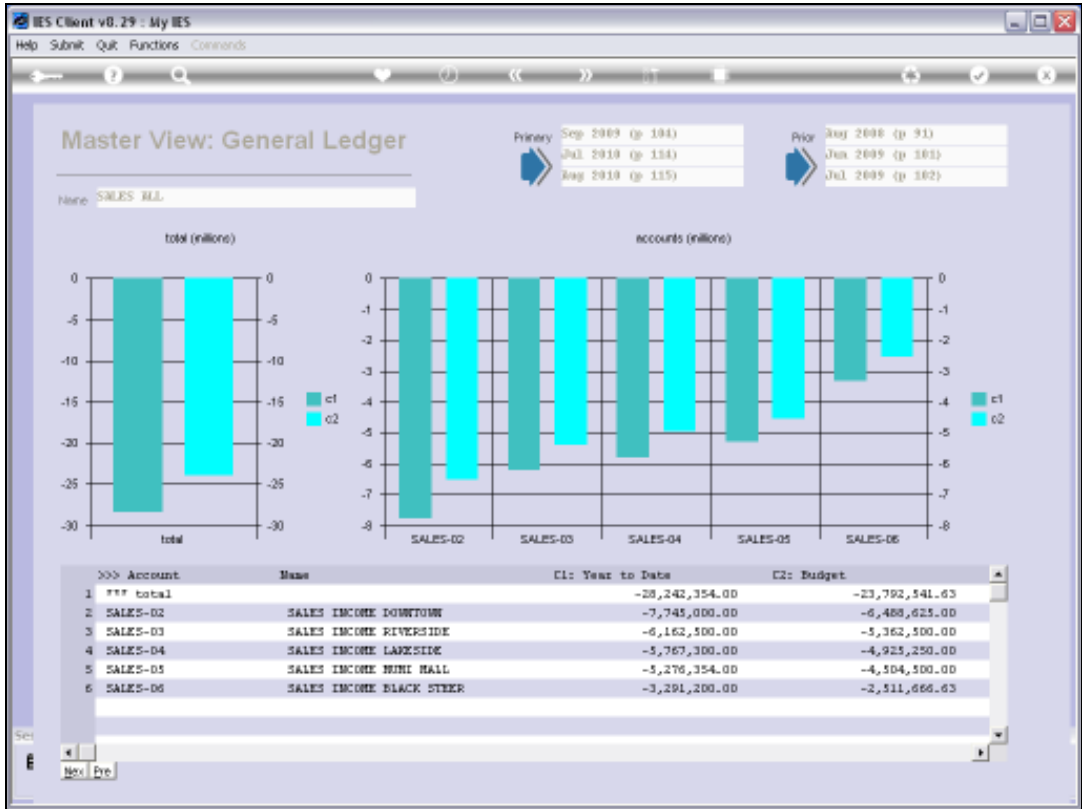
Slide 13

Slide notes:



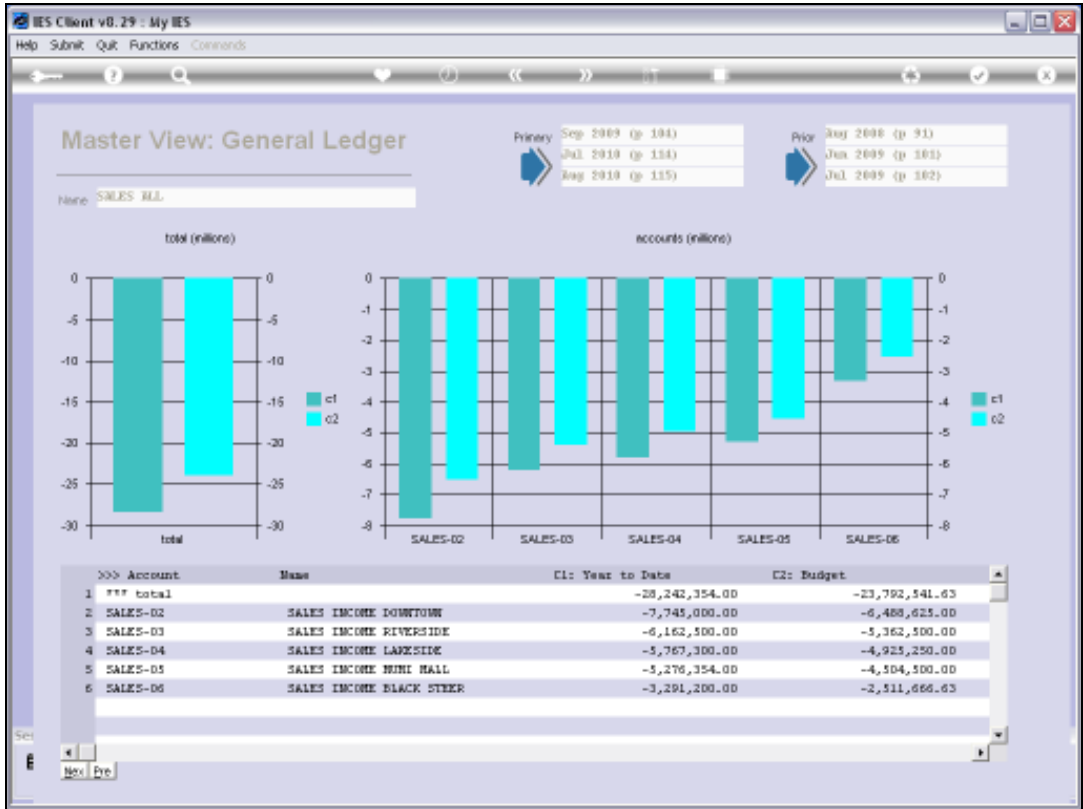
Slide 14

Slide notes: And we can drill into any of the Master Accounts to see the detail Ledger View for that Master Account. Here, we can see the Sales, Cost of Sales and Net Revenue for the 'Downtown' Branch. And we can still drill into any of these Accounts to the GL Account level if we wish, and there drill into Transaction detail and other views.



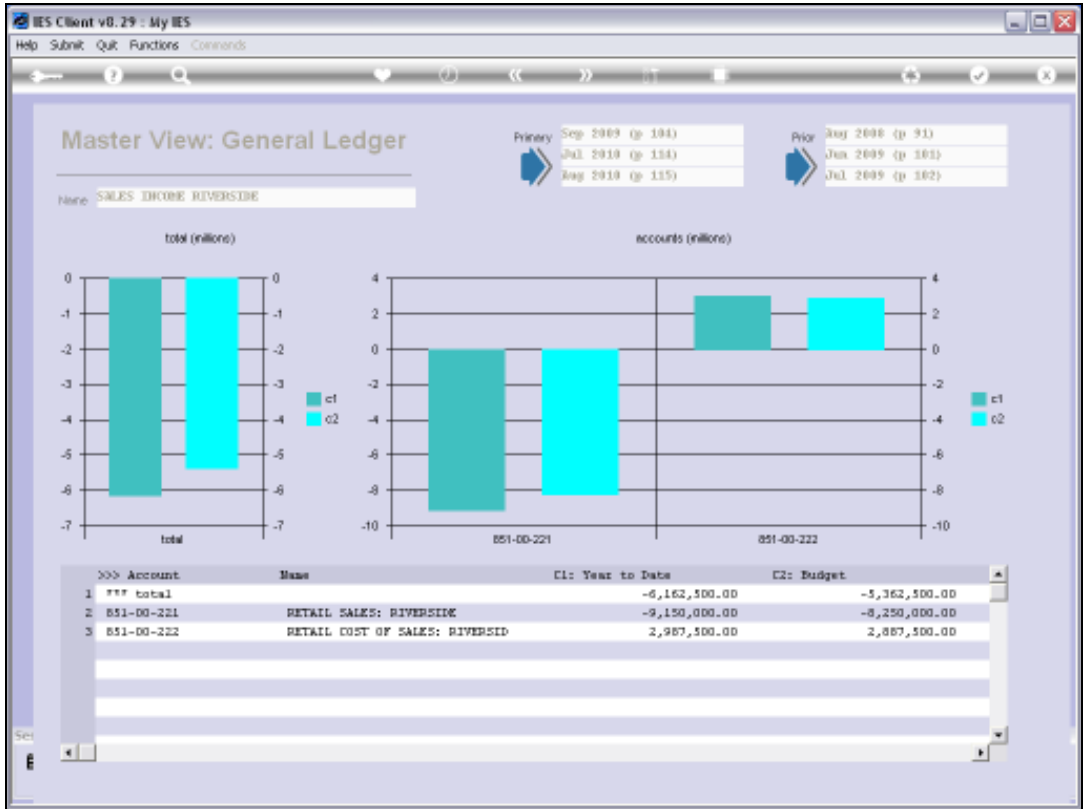
Slide 15

Slide notes:



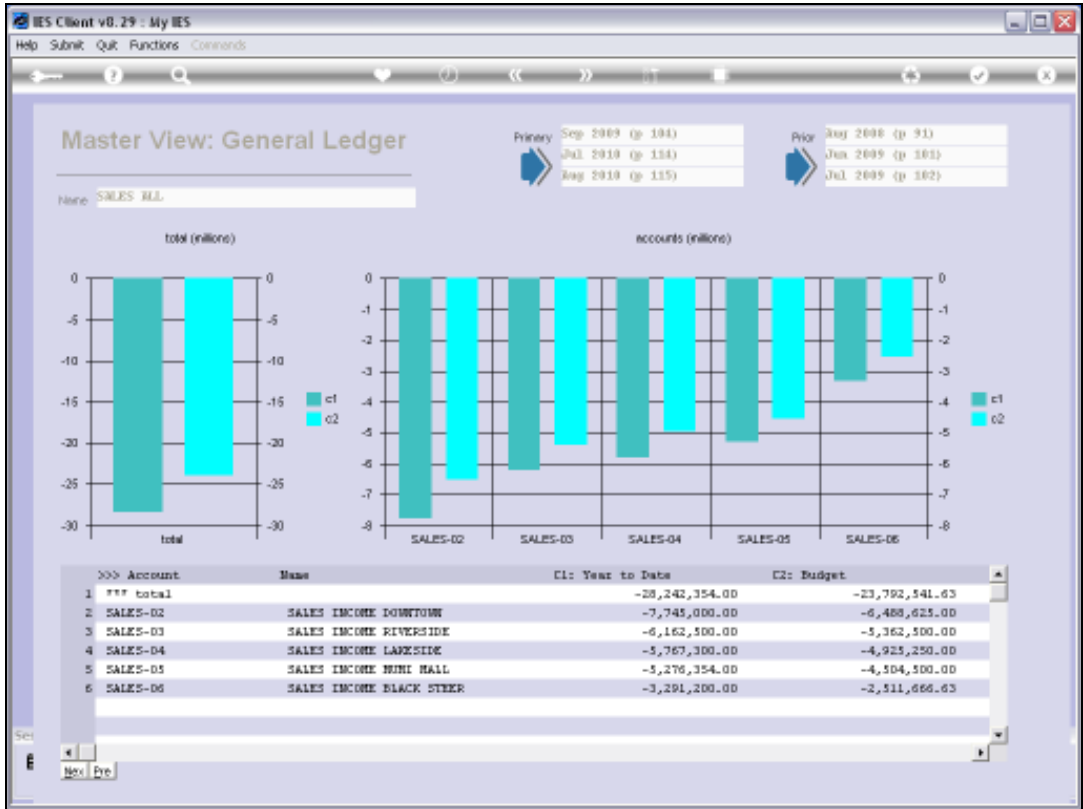
Slide 16

Slide notes:



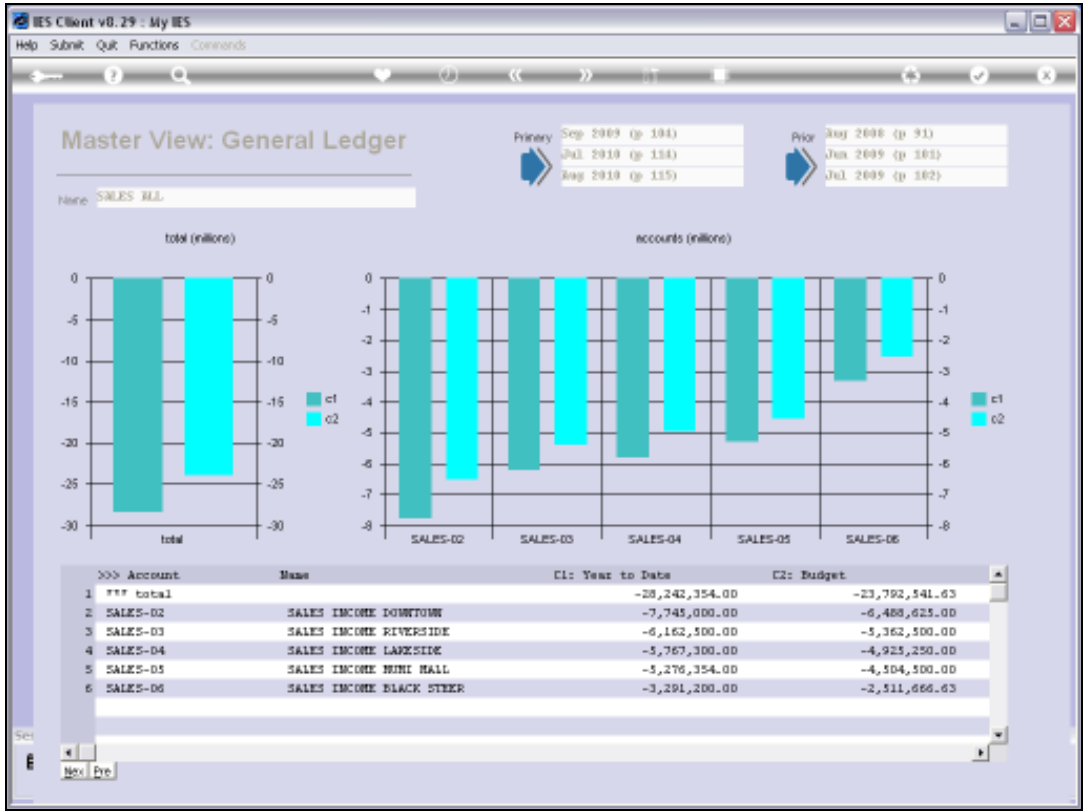
Slide 17

Slide notes: Here are the Riverside results.



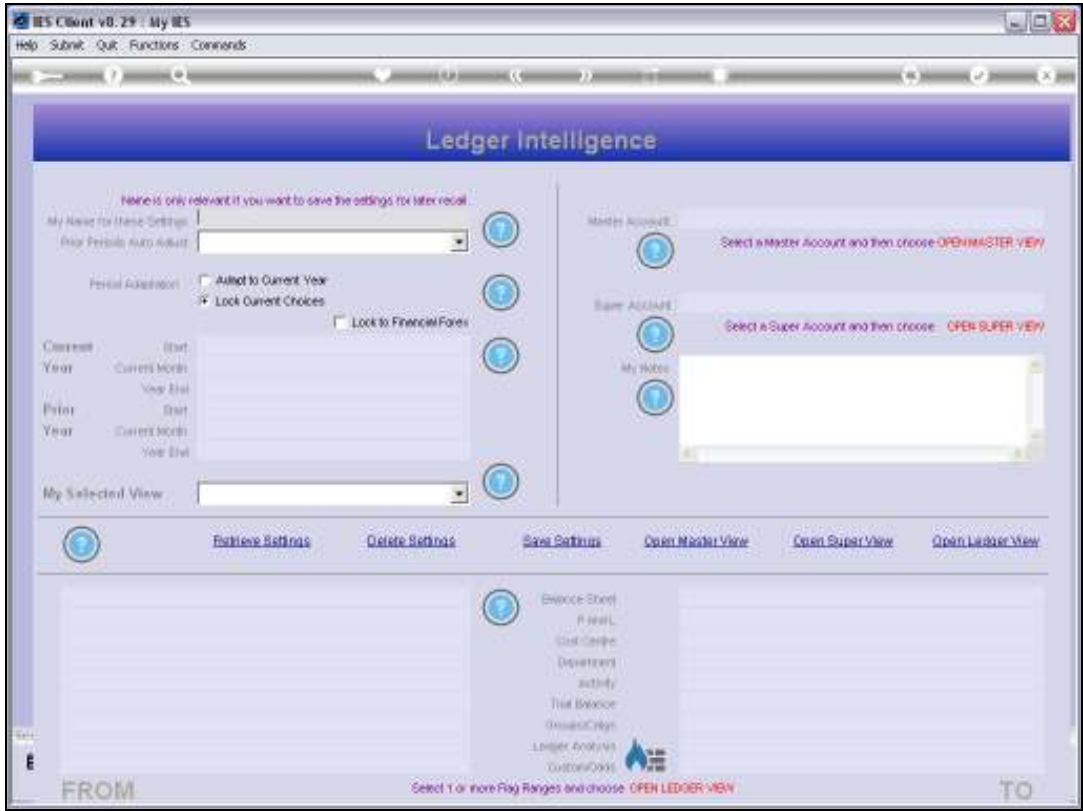
Slide 18

Slide notes:

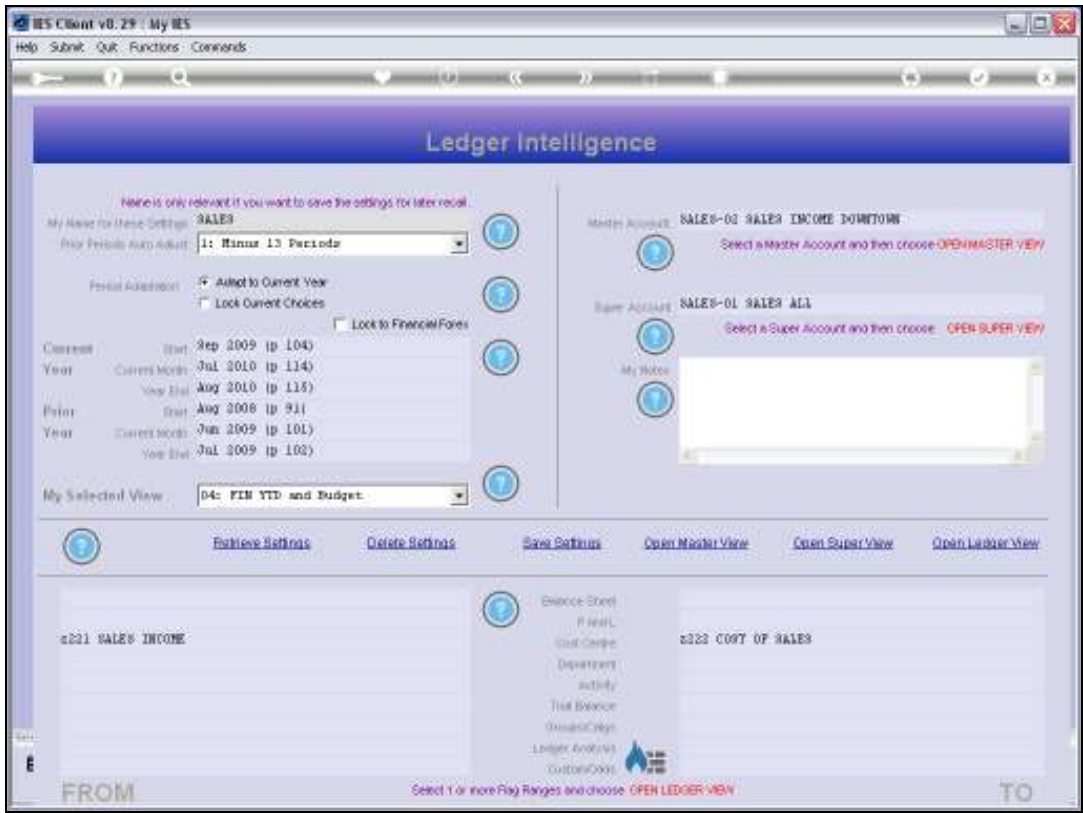


Slide 19

Slide notes: So that is an example of how we can open and use the powerful Super Account view.



Slide 20
Slide notes:



Slide 21
Slide notes: